



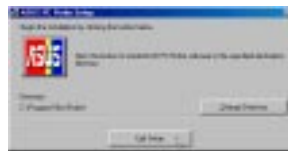
PC Probe Setup

PC Probe is a convenient utility to monitor the computer system's vital components. This is an optional software to help you monitor your Notebook PC.

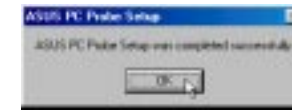
NOTE: In order for PC Probe to run, Intel's LDCM and other hardware monitoring programs cannot be installed.

Installation Procedure

1. Click on "PC Probe Setup" from the autorun.
2. Your system may require updating before installing, if so click **OK** and **Yes** to restart your computer.
3. Click "OK" after reading the welcome message.
4. Click the colored logo to install to the default directory. Click "Change Directory" if you wish to set a different destination.
5. Configure the settings if you desire (you can also make settings any time after you install PC Probe). The default setting runs a check on the system every 5 seconds for the Temperature and Voltage. Decreasing these values increases real-time accuracy but decreases system performance. Increasing these values produce the reverse effect. The "Run When Windows Starts" option is normally checked to start PC Probe upon entering Windows each time.



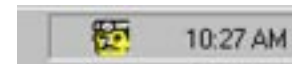
6. Click "OK" when the installation is completed. PC Probe will run automatically.



When PC Probe starts, a splash screen appears allowing you to "Show Monitor" or "Hide." "Show Monitor" allows you to see PC Probe in action and make adjustments. Hide will place "PC Probe" in the background while monitoring your system. You can select whether you want the splash screen to show in the future by selecting or clearing the "Show this next time" box.

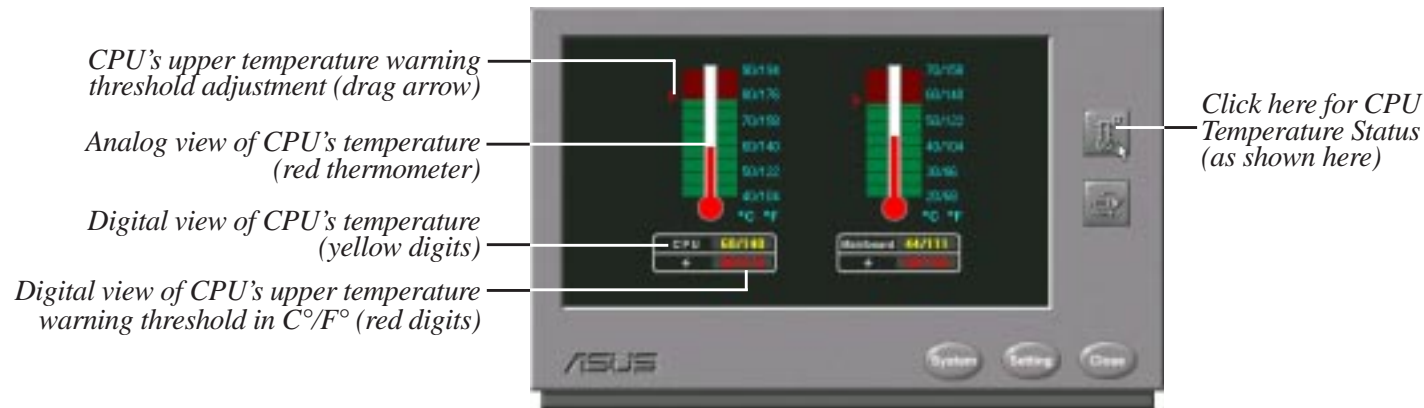


A yellow "doctor" will appear on the far right of the task bar indicating that PC Probe is running. Left clicking the yellow "doctor" will allow you to see your PC status.



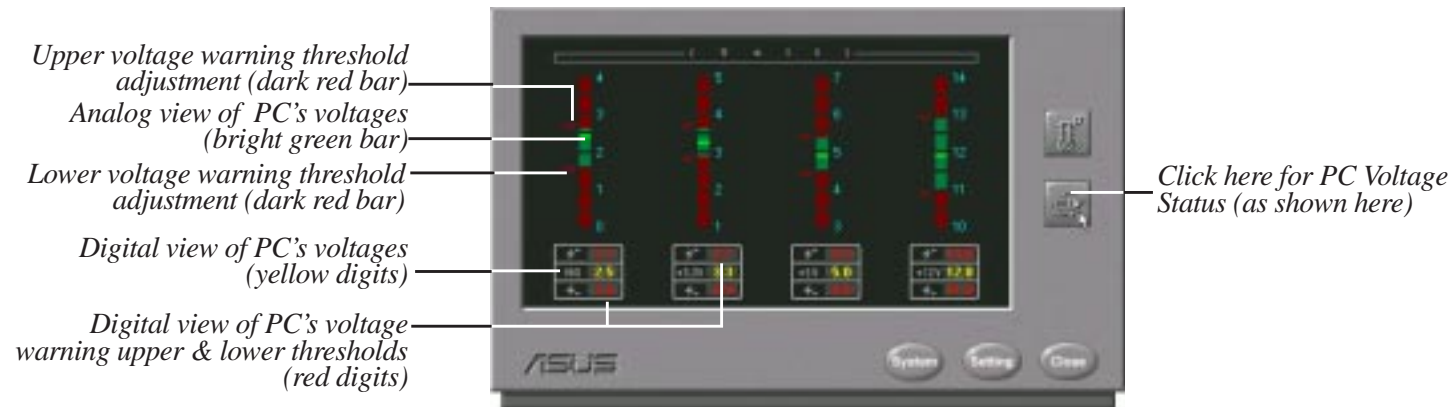
Using PC Probe

Notebook PC CPU Temperature Status



The red arrow points to the temperature warning threshold. Adjust the warning threshold by dragging the arrow so it is above the thermometer's red mark and in between the green area. PC Probe will sound an alarm if the thermometer reaches the dark red range.

Notebook PC Voltage Status



For voltage warnings, it is bad to be above or below the required voltages. There are two dark red adjustment bars to raise and lower the upper and lower warning ranges. A bright green bar on the green bars will indicate the current voltage. The PC Probe will sound an alarm if the bright green bar is within either of the two dark red regions. If adjustment is necessary, use the "voltage warning threshold adjustments" to open a green region above and below the bright green indicator.

Using PC Probe (Cont’)

PC Probe System Info.



Get information on your Notebook PC and BIOS from this screen.



The system information is very useful to understand your Notebook PC’s CPU, memory, and BIOS. Since the CPU and memory is the most vital part of any computer, be sure you know what you are getting before purchasing. In order to support future peripherals, BIOS updates are available from the internet or from your dealer. Your “product” and “BIOS version” will be necessary to determine whether an update is available for your Notebook PC. Each BIOS version always contain previous updates, so there is no need to keep track of or make multiple updates.

PC Probe Settings



Change PC Probe refresh times here

Check here to start PC Probe each time you enter Windows.



Check the thresholds you wish to reset to its default values and click this button.

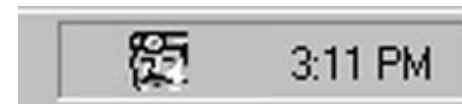
Click here to exit the Settings screen.

If you would like to change the polling intervals and PC Probe startup as described in the installation procedure, you may do it from this screen. The “Reset to Default” button allows you to reset the warning thresholds to the installation defaults. Clear the items you do not want to return to default and then click “Reset to Default.”

PC Probe Task Bar Icon



Right clicking the “doctor” will bring up a menu to turn PC Probe on, off, or to exit the utility. **NOTE:** PC Probe will start again if “Run When Windows Starts” is checked.



The “doctor” appears gray when off. **NOTE:** When set to “Off”, you cannot display the PC Probe by left clicking on the icon.



When there is a problem, the “doctor’s” light flashes red, the PC speaker sounds, and the PC Probe monitor will be displayed.