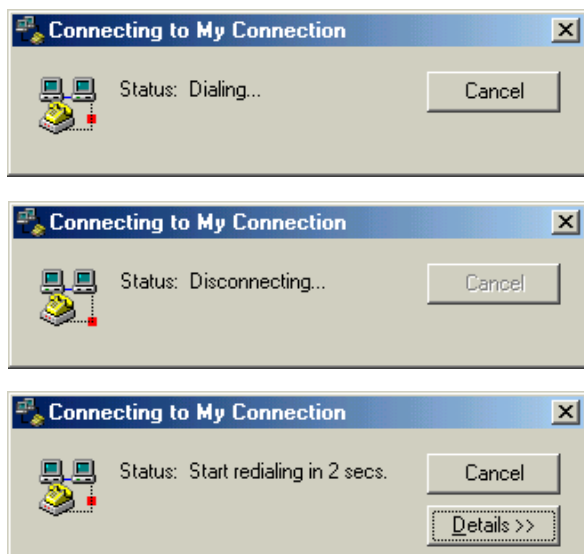


Internal Modem Driver Update

E725

If your operating system's date is set to February 21, 2001 or later and your modem disconnects as soon as you dial (this may repeat over and over), then you must upgrade your modem driver.

Example of Problem:



Identify your Operating System

To identify your Operating System, click the **Start** button and read the banner on the menu.

Identify the proper upgrade file for your OS and download it to your hard drive.

You can find all upgrade files for Windows Operating Systems on the Web or FTP sites. ME & 2000 files are also included in the floppy diskette.

- WinME-FIX.exe ==> For Windows ME
- W2K-FIX.exe ==> For Windows 2000
- W98SE-FIX.exe ==> For Windows 98/SE
- NT4-FIX.exe ==> For Windows NT4.0

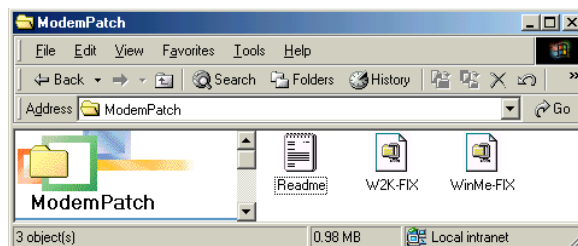
Web Sites:

<http://www.asus.com.tw/products/notebook/l8400-c/drivers.html>
<http://www.asus.com.tw/products/notebook/l8400-k/drivers.html>

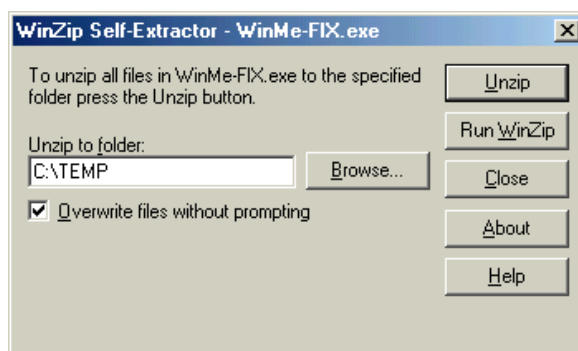
FTP Sites:

<ftp://ftp.asus.com.tw/pub/asus/nb/l8400-c/modem>
<ftp://ftp.asus.com.tw/pub/asus/nb/l8400-k/modem>

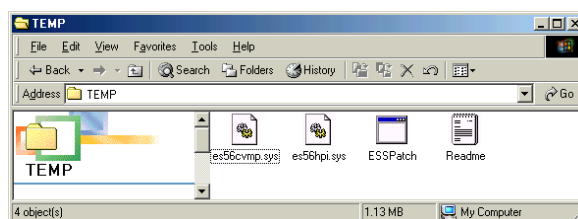
Modem Driver Upgrade Steps:



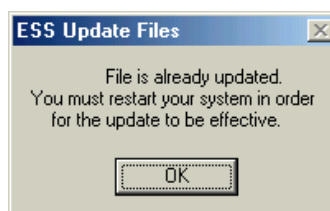
Double click **WinME-FIX** for Windows ME OS, or **W2K-FIX** for Windows 2000 OS.



Change the Unzip folder path to **C:\TEMP**.



Browse to **C:\TEMP** and double click **ESSPatch**.



After you restart your computer, your modem should function properly.