

NOTEBOOK PC

SOFTWARE SETUP & REFERENCE

Product Name: **Notebook PC Support CD**
Manual Revision: **1.00 E673**
Release Date: **March 2001**

Table of Contents

Windows® Quick Install Guide	4
Support CD for Windows ME & 2000	5
Drivers for Windows ME & 2000	5
Autorun Screen for Windows ME	5
Autorun Screen for Windows 2000	5
Intel 815EM INF Update	8
Installing the Intel 815EM INF Update for Windows ME & 2000	8
ATKACPI Driver	9
Installing the ATKACPI Driver for Windows ME	9
Installing the ATKACPI Driver for Windows ME (Cont')	10
ATKACPI Driver	11
Installing the ATKACPI Driver for Windows 2000	11
VGA Driver	12
Installing the VGA Driver for Windows ME	12
Setting Display Property Settings	12
VGA Driver	13
Installing the VGA Driver for Windows 2000	13
Audio Driver	14
Installing the Audio Driver for Windows ME & 2000	14
Installing the Audio Driver for Windows ME & 2000 (Cont')	15
Installing the Audio Driver for Windows ME & 2000 (Cont')	16
Audio Controls	16
DirectX 8.0	17
Installing DirectX 8.0 for Windows ME & 2000	17
LAN Driver	18
Installing the LAN Driver for Windows ME & 2000	18
Configuring the Network Device	18
Changing Adapter Settings (Windows ME)	18
Changing Adapter Settings (Windows 2000)	21
Joining a Domain (Windows 2000)	21
Viewing Your Network	21

Modem Driver	21
Installing the Modem Driver for Windows ME	21
Installing the Modem Driver for Windows 2000	23
TouchPad	24
Installing the TouchPad Driver for Windows ME	24
Installing the TouchPad Driver for Windows 2000	25
Fast IR Driver	26
Installing the Fast IR Driver for Windows ME & 2000	26
SpeedStep	27
Installing SpeedStep for Windows ME & 2000	27
PC-cillin 2000	28
Installing the PC-cillin 2000 Anti-Virus Software for Windows ME	28
Installing the PC-cillin 2000 Anti-Virus Software for Windows 2000	32
Hotkey Utility	34
Installing the Hotkey Utility for Windows ME & 2000	34
Windows Flash Utility	35
Installing the Windows Flash Utility for Windows ME & 2000	35
ASUS PC Probe	36
Installing PC Probe for Windows ME & 2000	36
Screen Saver Utility	37
Installing the Screen Saver Utility for Windows ME & 2000	37
PortDock Driver	38
Installing PortDock Driver for Windows ME	38
Windows ME & 2000 Software Reference	39

Windows® Quick Install Guide

1. Insert the Windows ME/2000 CD into the CD-ROM drive.
2. ATAPI CD-ROM Drive must be set to boot before the Hard Drive in BIOS setup (press **F2** during boot) or press **Esc** and select “ATAPI CD-ROM Drive” (use the up and down arrows and press Enter)

IMPORTANT: In most cases, you will be prompted to press a key to boot from the CD. Failure to do so will result in booting from your next boot device.

3. Press **Enter** to Setup Windows and press **F8** after you have read and accepted the Licensing Agreement.
4. **Windows ME:** If you have an existing OS, you can choose to install Windows ME in another directory in order to preserve your existing OS. You will be given an OS choice each time you boot up your Notebook PC. If you currently use Windows 95/98 and wish to preserve your installed applications and settings, “upgrade” Windows by installing into your existing directory.

Windows 2000: If you have a previous OS, press **ESC** to install a fresh copy of Windows 2000. Follow the next screens to partition your hard drive. Use the “NTFS” file system for increased functionality. Installing in the same partition as an existing OS will give you a choice to format or leave intact. If you leave intact without formatting, you will be given an OS choice each time you boot up your Notebook PC.

5. After you install Windows, insert the Notebook PC support CD to install drivers and utilities.

Support CD for Windows ME & 2000

The Notebook PC you purchased may or may not be preloaded with an operating system. The support CD included with this Notebook PC provides all the necessary drivers and utilities in order for you to use your Notebook PC with Microsoft® Windows® 95/98/ME/2000 (referred to as “Windows” in this User’s Manual).

This Notebook PC offers its customers the choice of a pre-installed operating system such as **Microsoft Windows ME (Millennium Edition) or Windows 2000**. The choices and languages will depend on the territory. The levels of hardware and software support may vary depending on the installed operating system. Operating systems not pre-installed on this Notebook PC may produce different results than the ones described in the provided user’s manuals.

If your Notebook PC is not preloaded with any operating system, or you want to install another operating system other than the preloaded one, the following pages will give step-by-step installation procedures for typical system configurations under the Windows® operating system. For application usage, please see the online help provided with each of the applications after installation. The following is what you will see when you insert the support CD. If the autorun menu does not appear, double clicking the CD-ROM disc drive icon in “My Computer” (may be the (D:) drive or (E:) drive on hard drives with two partitions) or running SETUP.EXE (through Start menu “Run...”) located in the root of the support CD, will bring up the autorun menu.

Autorun Screen for Windows ME



Autorun Screen for Windows 2000



Drivers for Windows ME & 2000

The following are descriptions of what each autorun menu item does when selected with the mouse. Due to ongoing improvements in the support CD, there may be some differences between this User’s Manual and your support CD. The names in quotations are the actual driver names displayed in the System Properties of MS Windows. Windows cannot contain all the device drivers from every manufacturer, with every update; therefore the provided support CD will contain the best driver for your built-in devices and should be used in place of any Windows default drivers.

Support CD Contents

Intel 815EM INF Update (required) “Intel 815” Driver

Shown under Windows “**System devices.**” This installs drivers for the Notebook PC’s Intel 815EM chipset.

ATKACPI Driver (required) “ATK0100 ACPI UTILITY” Driver

Shown under Windows “**System devices.**” This installs drivers for the Notebook PC’s Advanced Configuration and Power Interface (ACPI) for power management functions.

VGA Driver (required) “Intel(R) 82815 Graphics Controller” Driver

Shown under Windows “**Display adapters.**” This installs display drivers for your operating system in order to properly use the Notebook PC’s built-in graphics controller and to provide optimal features. Once the display driver is installed, you can change your display’s resolution and color through Display Properties.

Audio Driver (required) “Intel AC’97 Audio Controller-Sigmatel CODEC” Driver

Shown under Windows “**Sound, video and game controllers.**” This installs audio drivers for your operating system in order to properly use the Notebook PC’s built-in sound controller. All audio functions are configured through Windows and help can be located within Windows documentation or Windows help files.

DirectX 8.0 (recommended) (Drivers integrated with Windows)

Installs version 8 of the DirectX utility for modern multimedia software applications. Windows uses DirectX to enhance multimedia capabilities on your computer. DirectX provides better playback of different types of multimedia and manages 3-D graphics better than console computers. Most graphics intensive games require DirectX and will include it on their setup CD.

LAN Driver (required) “Intel PRO/100 VE Network Connection” Driver

Located under Windows “**Network Adapters.**” Installs the required LAN driver for the Notebook PC’s built-in PCI Fast-Ethernet controller. Fast-Ethernet supports both 10 Base-T or 100 Base-TX networks at half or full duplex.

Modem Driver (required) Pctel “HSP56MR” & “Unimodem Full-Duplex Audio Device” Driver

Installs the necessary driver in order for your operating system to have the correct files for the Notebook PC with built-in modem and drivers for integration with the internal audio.

TouchPad (recommended) “Synaptics PS/2 Port TouchPad” Driver

Shown under Windows “**Mice and other pointing devices.**” Installs “**Synaptics® TouchPad**” utility. The Notebook PC already supports built-in or externally connected keyboard and PS/2 mouse devices. The Notebook PC’s integrated TouchPad pointing device is fully compatible with two or three-button PS/2 mice. However, the provided device driver will provide enhancements and features to the TouchPad to increase the functionality of the TouchPad. For detailed information, see the Software Reference in the next section. To access help, right-click the TouchPad icon on the taskbar and select Help.

Fast IR Driver (required) “IrDA Fast Infrared Port” Driver

Shown under “**Infrared devices.**” Configures your Infrared Transceiver A to “**Vishay TFDS-6500**” so that your Infrared port can work properly.

SpeedStep (recommended) Utility

Installs **Intel® SpeedStep™**. SpeedStep™ is a technology that provides adjustable processor speeds for maximum performance when connected to an external power and battery optimized performance when going mobile. The processors can dynamically switch clock frequency and voltage, depending on whether the computer is running on batteries or is plugged into AC power. These changes in frequency happen in only 1/2000th of a second — so fast, they are invisible to users, even if they occur in the middle of performance-intensive applications.

PC-cillin 2000 (optional) Utility

Installs **Trend's PC-cillin 2000**, a world-class anti-virus protection software for the new Internet era, to keep your PC virus-free. This very powerful anti-virus software is bundled with each Notebook PC to protect your investment. As software become more and more a part of our daily lives, measures have to be taken to protect them. You may skip this software if you have your own anti-virus software.

Hotkey Utility (required) Utility

Installs **Hotkey utility**. Hotkey utility is a program designed to intercept key strokes so that key assignments can be made to run a program or script. This program cannot be used to change default keys or key combinations used by other software, operating systems, or by the Notebook PC's hardware.

Windows Flash Utility (recommended) utility

Installs a BIOS update utility for Windows so that you can conveniently update your Notebook PC's BIOS without having to restart your Notebook PC in DOS mode.

ASUS PC Probe (optional) utility

Installs **PC Probe** utility to monitor the Notebook PC's CPU temperature and other resources. This is an optional software to help you better manage your Notebook PC's resources.

Screen Saver Utility (optional) Utility

Installs Screenweaver screen saver utility to provide an amazing Macromedia Flash presentation for the Notebook PC.

PortDock Driver (optional) "EPP Parallel Port to ATA/ATAPI Adapter-Windows95/98" Driver

Shown under **SCSI controllers**. Installs drivers to use IDE drive modules in the PortDock. A floppy drive module does not require this driver. This driver is currently not available for Windows 2000.

Read Me Text

Gives you notes concerning this support CD or the Notebook PC.

Browse this CD

Shows you the contents of this support CD using Windows Explorer.

Technical Support Form Text

Opens up a Technical Support Request Form so that you will understand what kind of information is needed if you run into problems and require technical assistance.

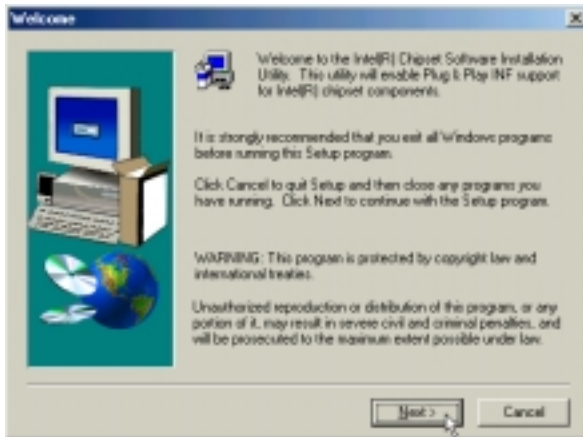
Exit

Closes the support CD autorun screen.

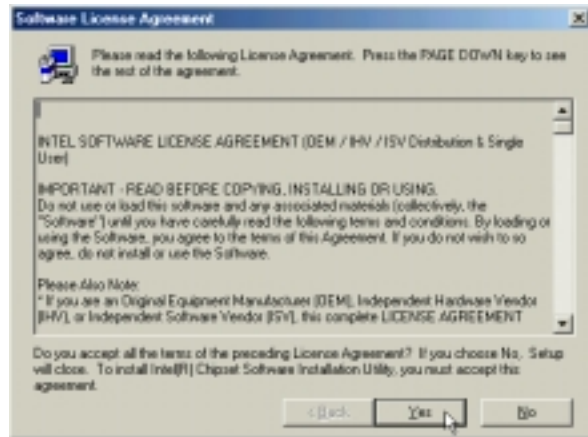
Intel 815EM INF Update

Installing the Intel 815EM INF Update for Windows ME & 2000

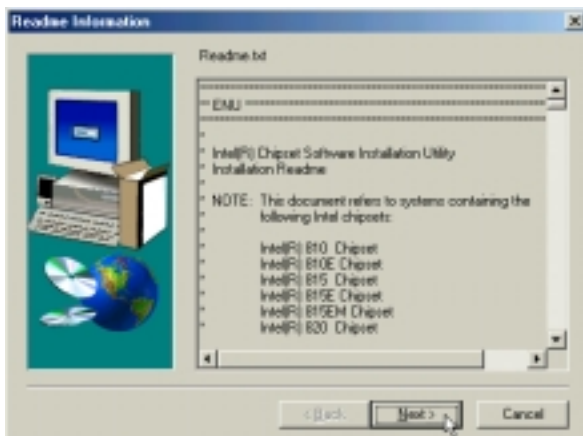
Installation is the same for Windows ME and 2000. Insert the support CD and click **Intel 815EM INF Update** on the autorun menu to start the installation wizard.



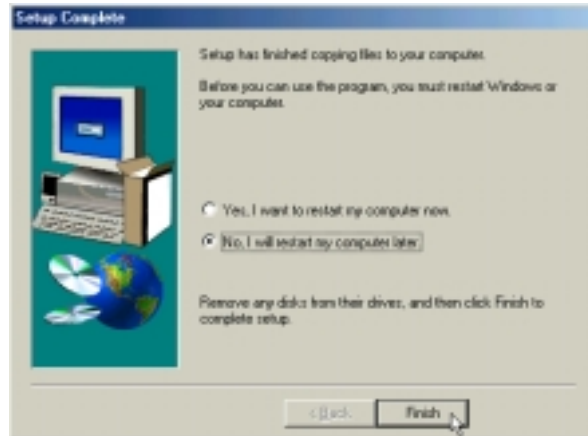
(1) Click **Next** after reading the welcome message.



(2) Click **Yes** after reading the license agreement.



(3) Click **Next** after reading the readme text.

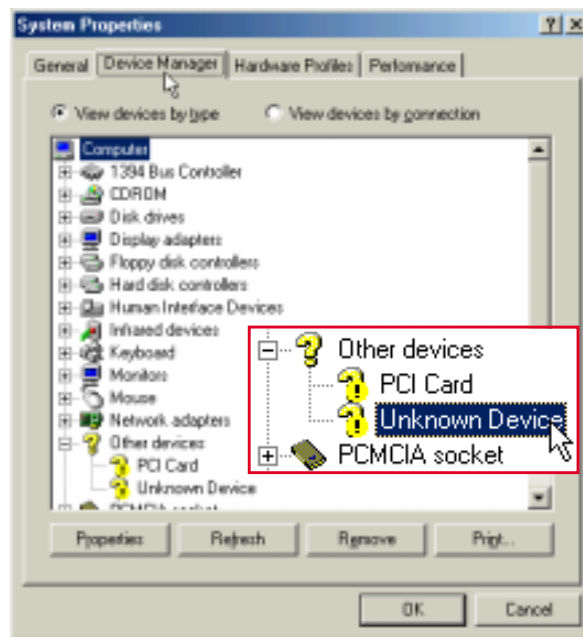
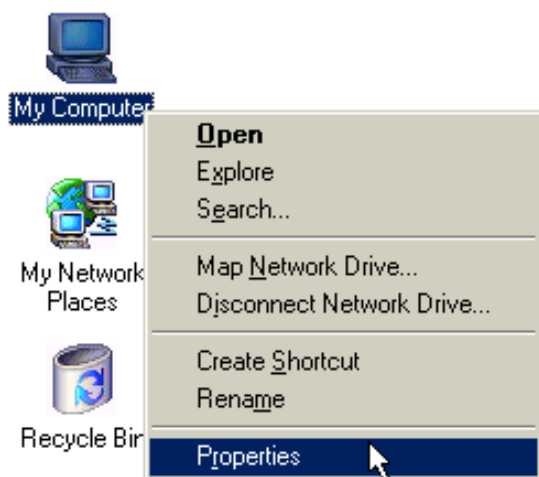


(4) Installation has finished. Select **No** so that you can install other items and then click **Finish**.

ATKACPI Driver

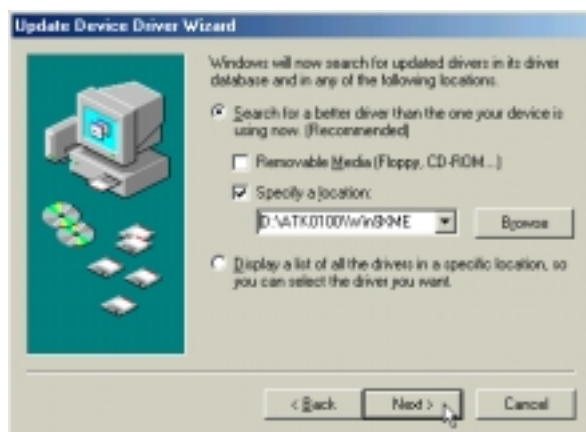
Installing the ATKACPI Driver for Windows ME

Installation is different for Windows ME and 2000. Find Windows 2000 installation after this section. Insert the support CD and click **ATKACPI Driver** on the autorun menu to start the installation wizard.

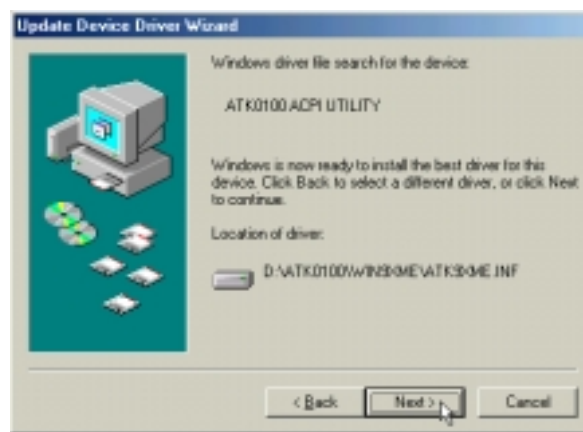


(1) Right click **My Computer** and choose **Properties**.

(2) Click the **Device Manager** tab and double click the **Unknown Device**.

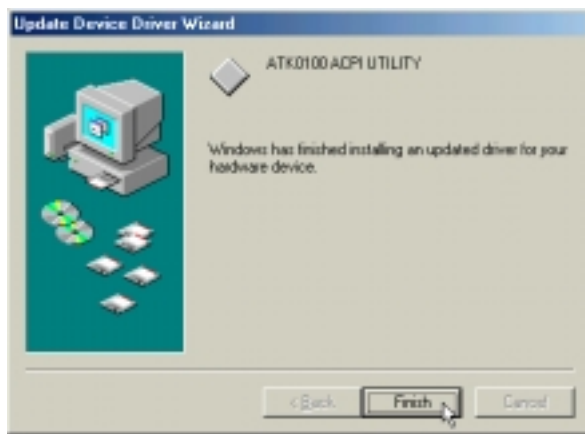


(3) Click **Specify a location** and enter the path: **D:\ATK0100\Win9XME**. Click **Next**.



(4) Click **Next** to install drivers for the ATK0100 ACPI UTILITY.

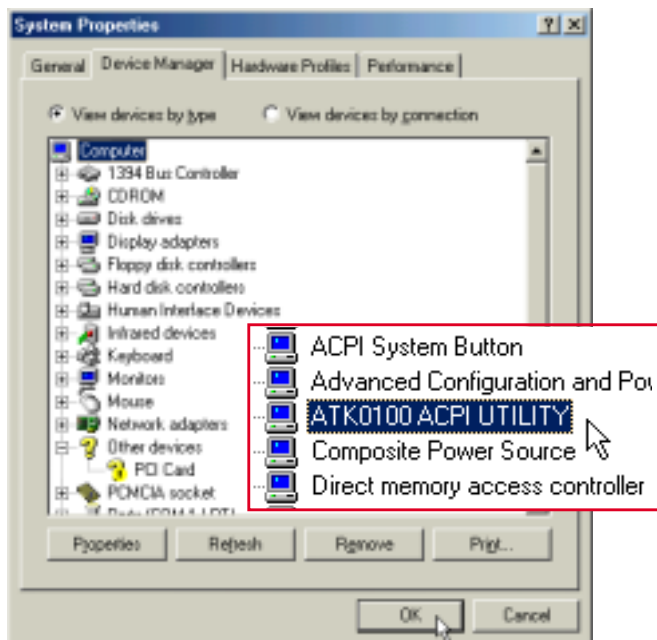
Installing the ATKACPI Driver for Windows ME (Cont')



(5) Click **Finish** when the drivers have been installed.



(6) Click **Close** to exit the ATK0100 ACPI UTILITY properties.

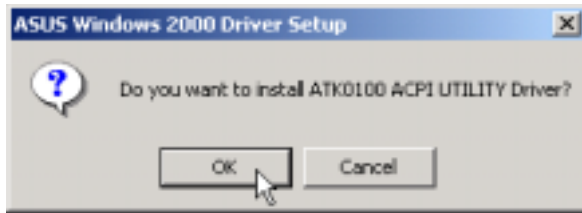


(7) The Unknown Device will then be recognized as ATK0100 ACPI UTILITY.

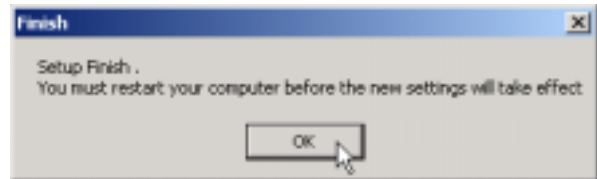
ATKACPI Driver

Installing the ATKACPI Driver for Windows 2000

Installation is different for Windows ME and 2000. Find Windows ME installation before this section. Insert the support CD and click **ATKACPI Driver** on the autorun menu to start the installation wizard.



(1) Click **OK** to install the driver.

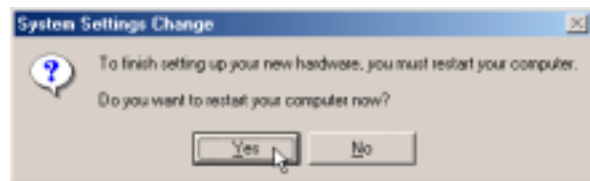
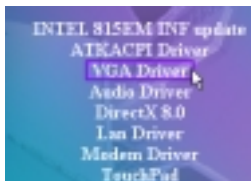


(2) Installation has finished. Select **OK** to restart your computer.

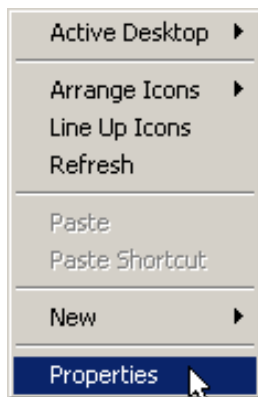
VGA Driver

Installing the VGA Driver for Windows ME

Installation is different for Windows ME and 2000. Find Windows 2000 after this section. After installing Windows, your screen area will appear smaller than the available display and with poor resolution. Simply click **VGA Driver** on the support CD autorun menu to install the VGA driver and then restart.



Setting Display Property Settings

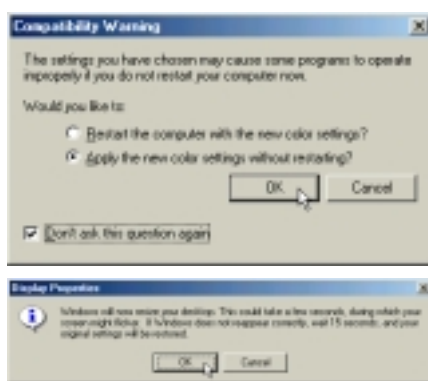


(1) Right-click on the Windows desktop and click **Properties**.

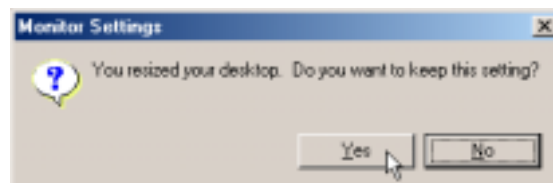
(2) Click the **Settings** tab

(3) Set Colors to **True Color** and Screen area to **800 by 600 pixels** (or 1024 by 768 on selected models).

NOTE: Setting to larger screen areas will require panning (by moving your cursor to the screen's border) in order to see the entire desktop.



(4) You can select "Apply...without restarting?" and "Don't ask...again" to save time in the future. Click **OK** to test your settings.

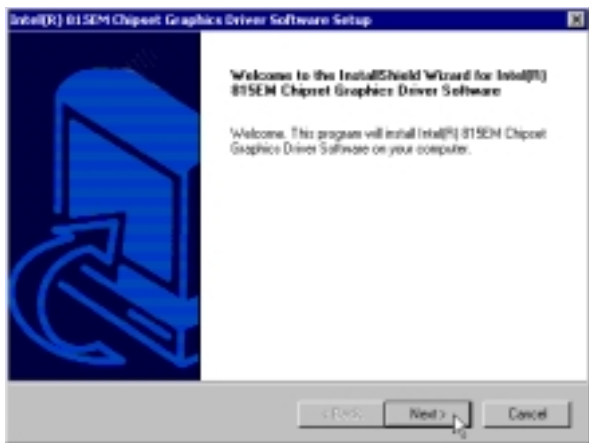


(5) Click **Yes** to keep your settings. If you click No or are unable to click to Yes, your previous settings will be restored.

VGA Driver

Installing the VGA Driver for Windows 2000

Installation is different for Windows ME and 2000. Find Windows ME before this section. After installing Windows, your screen area will appear smaller than the available display and with poor resolution. Follow the steps below to correct the problem.



(1) Click **Next** after reading the Welcome message.



(2) Click **Yes** after reading the license agreement.



(3) Click **Yes** when asked about continuing without a digital signature because this driver has been tested by the Notebook PC manufacturer to work with MS Windows 2000.

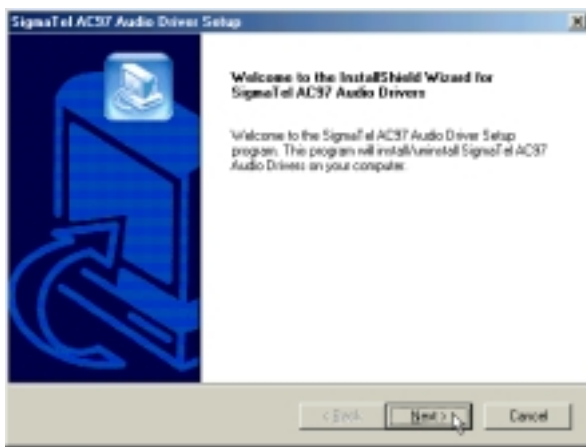


(4) Installation has finished. Select **Finish** to exit.

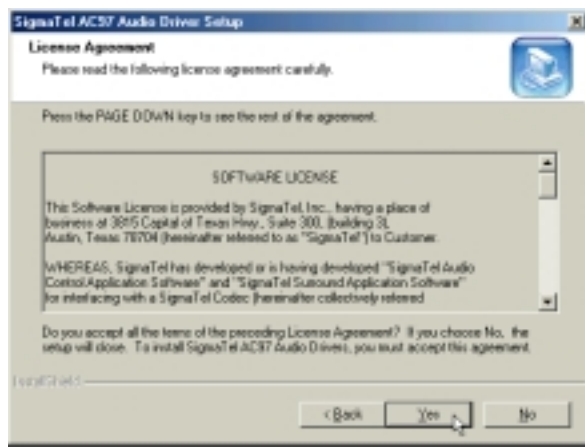
Audio Driver

Installing the Audio Driver for Windows ME & 2000

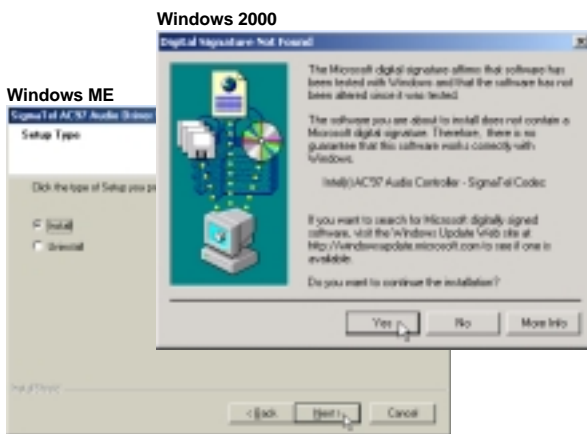
Installation is different for Windows ME and 2000. Windows ME will require additional steps. Insert the support CD and click **Audio Driver** on the autorun menu to start the installation wizard. Before the driver installation requires a restart of Windows, you must eject the Notebook PC Support CD.



(1) Click **Next** after reading the welcome message.

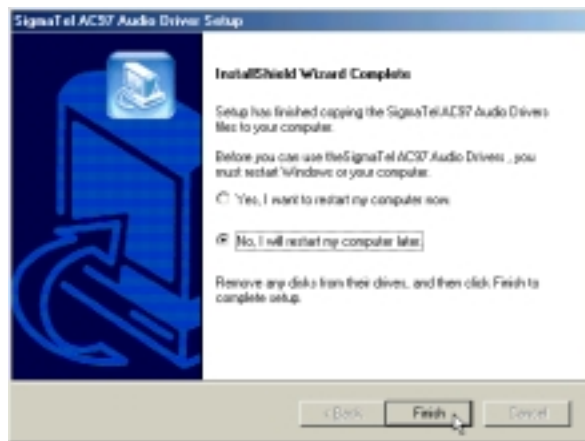


(2) Click **Yes** after reading the license agreement.



(3) Select **Install** and click **Next** to install drivers.

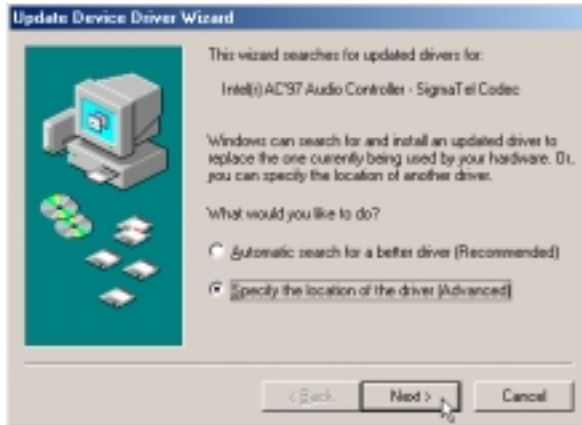
Windows 2000: Click **Yes** when asked about continuing without a digital signature because this driver has been tested by the Notebook PC manufacturer to work with MS Windows 2000.



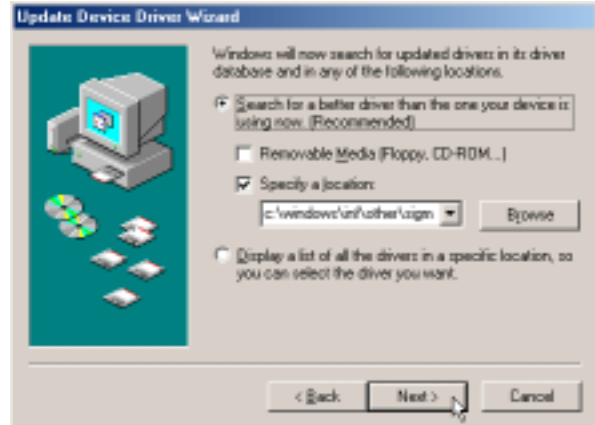
(4) Installation has finished. Select **No** so that you can install other items and then click **Finish**. At this point, installation is complete for Windows 2000. Windows ME will continue to install drivers the next time you restart Windows.

Installing the Audio Driver for Windows ME & 2000 (Cont')

When you restart Windows later, you will get a "Add New Hardware Wizard" screen to install "Intel(r) AC'97 Audio Controller - SigmaTelCodec".



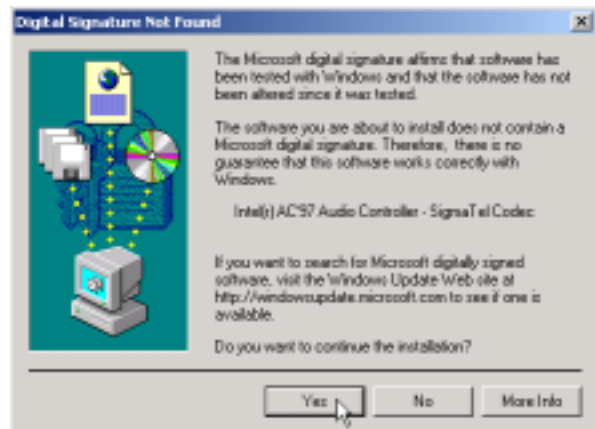
(1) Click **Specify the location of the driver** and click **Next**.



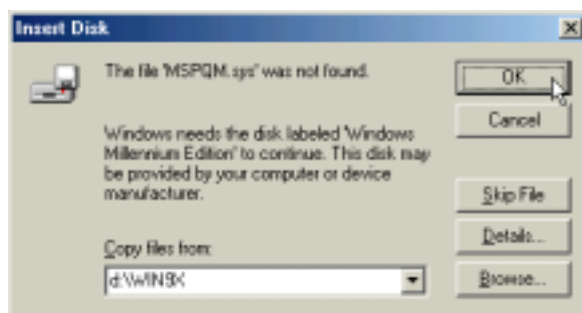
(2) Click **Specify a location** and enter path: **C:WINDOWS\INF\OTHER\SIGMAT~1.INF**
You cannot use browse because the INF folder is hidden. Click **Next** to continue.



(3) Click **Next** to install the driver.



(4) Click **Advanced** and select "Warn when installing unsigned devices" and click **OK**. Click **Finish** to continue installing audio drivers.



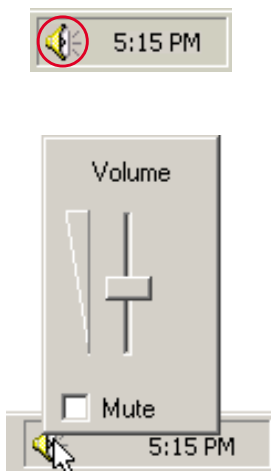
If you get this dialog box for MSPQM.sys:
Browse to the "C:WINDOWS\OPTIONS\INSTALL" on your hard drive or the "WIN9X" folder on the Windows installation CD. Click **OK** to finish.

Installing the Audio Driver for Windows ME & 2000 (Cont')

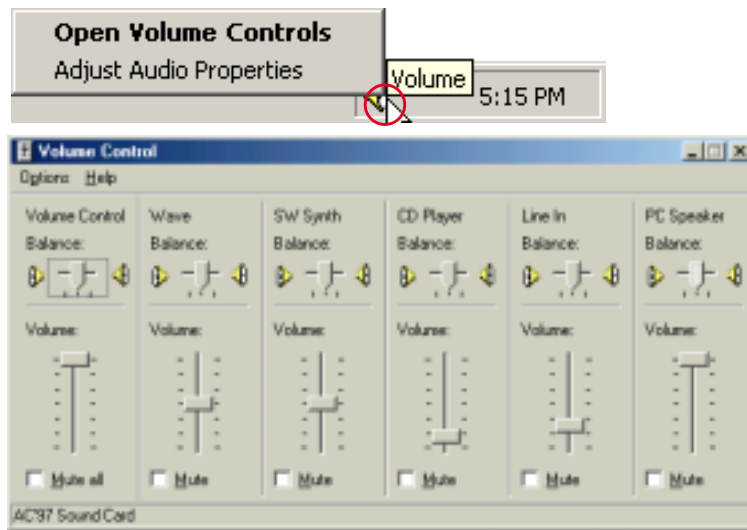
Audio Controls

A Speaker icon will show on the task bar and when selected with the left mouse button. A simple master control will show. If selected with the right mouse button a menu will show allowing adjustment of audio properties or detailed volume controls.

Mouse Left-Click



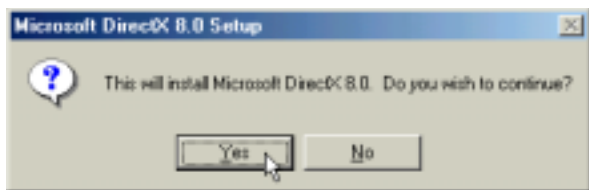
Mouse Right-Click



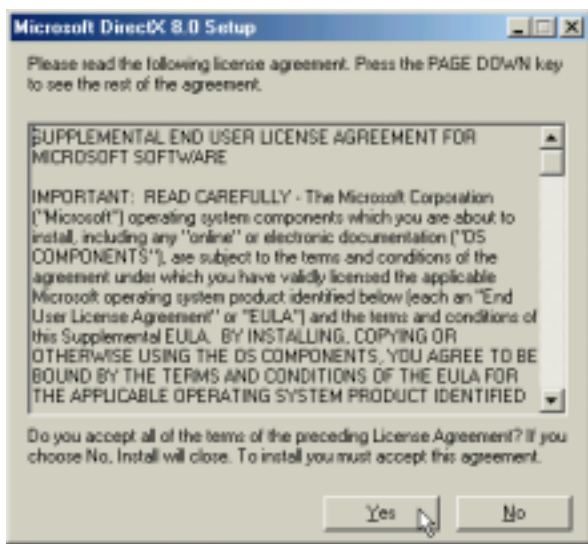
DirectX 8.0

Installing DirectX 8.0 for Windows ME & 2000

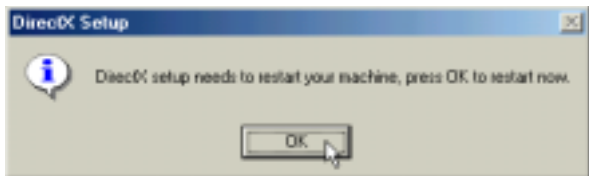
Installation is the same for Windows ME and 2000. Insert the support CD and click **DirectX 8.0** on the autorun menu to start the installation wizard.



(1) Click **Yes** to continue and install DirectX.



(2) Click **Yes** after reading the license agreement.

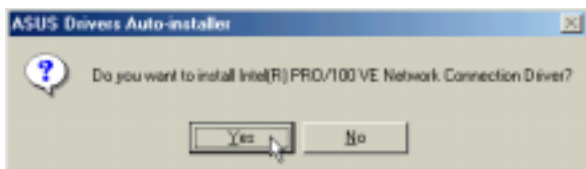


(3) Installation has finished. Click **OK** to restart your computer.

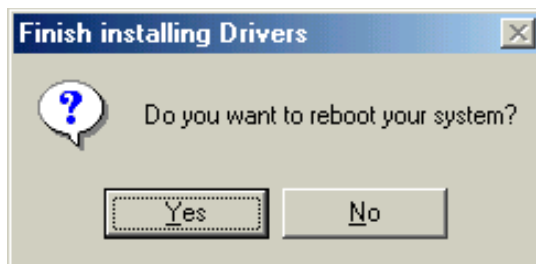
LAN Driver

Installing the LAN Driver for Windows ME & 2000

Installation is the same for Windows ME and 2000. Insert the support CD and click **LAN Driver** on the autorun menu to start the installation wizard.



(1) Click **Yes** to begin installing drivers.



(2) Installation has finished. Select **No** so that you can install other items.

Configuring the Network Device

The network device has the ability to send and receive packets at the same time (full-duplexing) at both 10 and 100 Mbps. In order to reap the benefits of full duplexing, you **MUST** have a full duplex hub or switch.

The network device has the added ability to “talk” to the hub or switch and determine at which mode to communicate (either full or half duplex). This is called auto-negotiation. You must have an auto-negotiating hub or switch to get full duplex support with the Duplex Mode set to Auto. If you don’t have an auto-negotiating hub or switch and want to run at full duplex, set Duplex Mode to Full and then set the SPEED parameter to either 100 Mbps or 10 Mbps.

Changing Adapter Settings (Windows ME)

Right-click the **Network** icon on the desktop and select **Properties**.

The network configuration page allows you to see the installed networking components.

Double click on the Realtek driver to make network controller settings.

You can make settings such as 10 or 100 mode on the Advanced page.

Use the tabs for other network settings.

Double click on the Network driver to make logon settings.

Identification is necessary to use the network browser. Enter a workgroup as instructed by your network administrator or try using the name of your domain. All servers may not be visible to you if you do not enter a workgroup that has a primary controller.

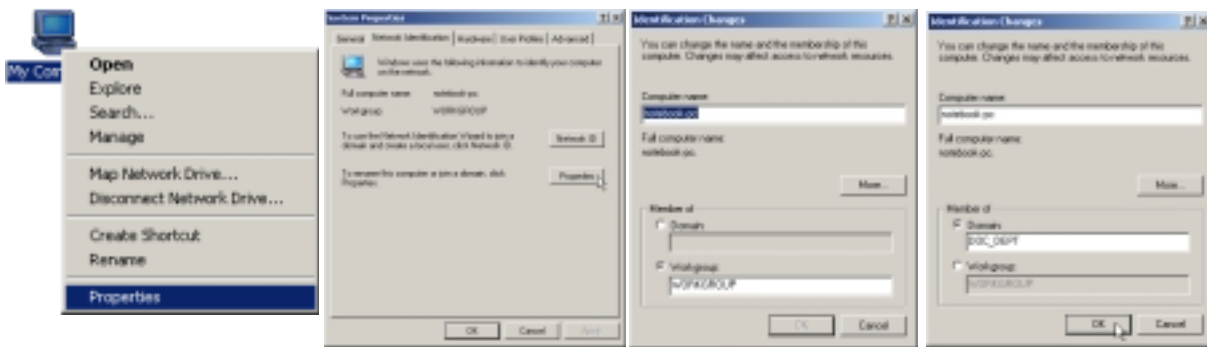
If you want to log into a server, you must check “Log on...” and enter your domain name. Windows 95/98/ME/2000 all use Windows NT domain. The primary server in the domain will perform routing and logon functions for your computer.

Changing Adapter Settings (Windows 2000)

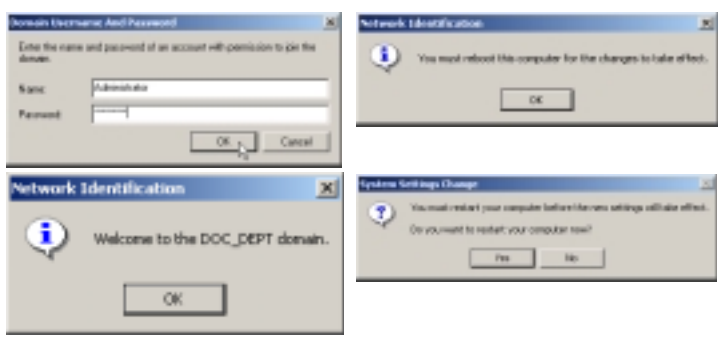


- (1) Right-click the **Network** icon on the desktop and select **Properties**.
- (2) Right click the network connection and select **Properties** to view installed protocols and components.
- (3) Click **Configure** to make "Advanced" driver settings or make settings to "Power Management". Other settings should not be changed.

Joining a Domain (Windows 2000)

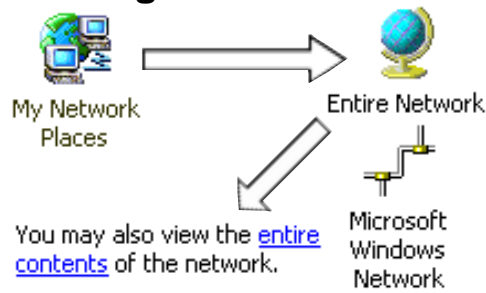


- (1) Right-click the **My Computer** icon on the desktop and select **Properties**.
- (2) Select **Network Identification** and click **Properties**.
- (3) The primary server in the domain will perform routing functions for your computer. Select **Domain** and enter an existing domain you wish to join.



- (4) Unfortunately, you will have to trouble your network administrator to grant you access.
- (5) After you restart your computer, you should see some contents through Entire Network.

Viewing Your Network

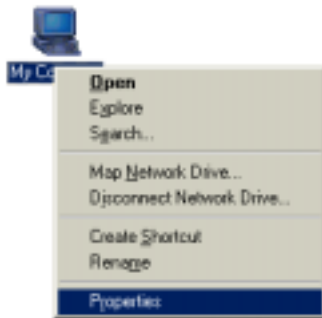


- (6) Clicking on "entire contents" will display networks which you have installed protocols for. Clicking a network protocol such as "MS Windows Network" will display all the servers available under that protocol.

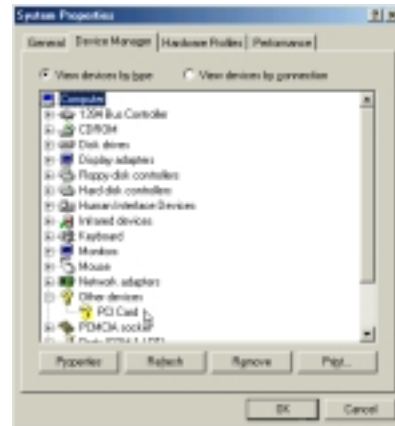
Modem Driver

Installing the Modem Driver for Windows ME

Installation is different for Windows ME and 2000. Find the Windows 2000 steps after Windows ME. Insert the support CD and follow the steps below to install the modem driver. There is no installation wizard for this process.



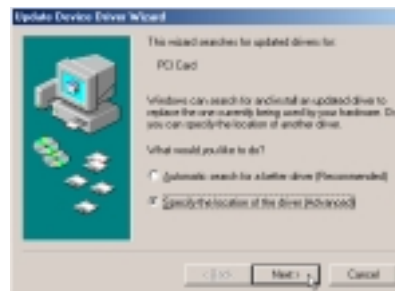
(1) Right-click "My Computer" and select **Properties**.



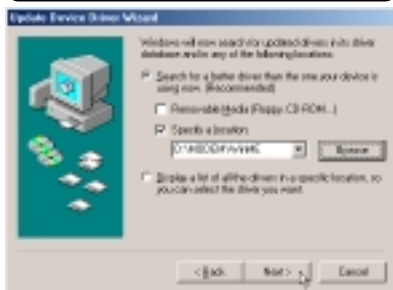
(2) Double-click **PCI Card** to see its properties.



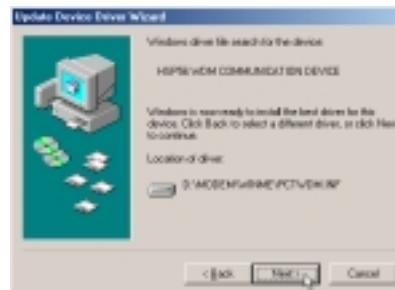
(3) Click **Reinstall Driver**.



(4) This installs the first driver. Select "Specify the location..." and click **Next**.



(5) Enter the path "**\\modem\winme**" (with the letter of your CD drive) and click **Next**.



(6) Click **Next** when the driver is located by Windows.

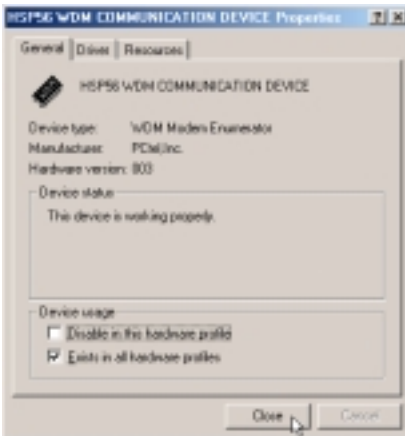
Installing the Modem Driver for Windows ME (Cont’)



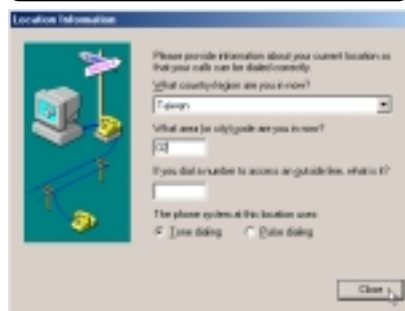
(7) Windows will detect your modem.



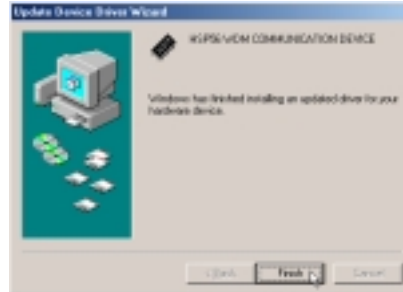
(9) The “New Hardware Found” automatically installs the drivers for voice modem capability.



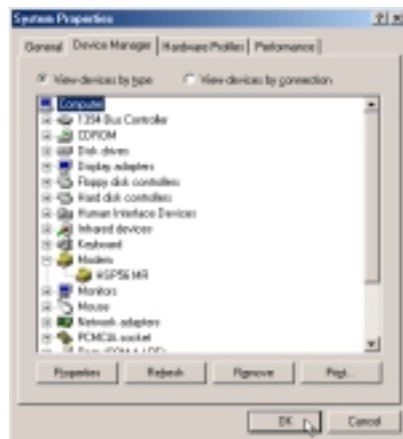
(10) Click **Close** after the installation wizards have finished.



(12) After you restart, you will be asked to enter your Country and area code. If you are using an office phone extension, you may also require an outside line prefix. Click **Close**.



(8) Installation is finished. Click **Finish** to exit.



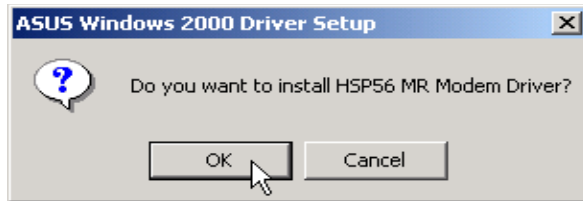
(11) Click **OK** to close the “System Properties” window.



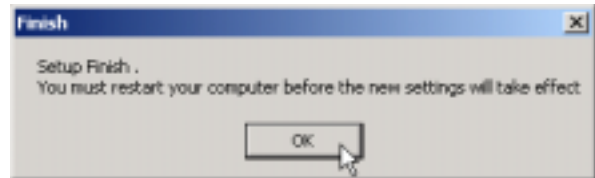
(13) Enter a description for “I am dialing from:” and click **OK**.

Installing the Modem Driver for Windows 2000

Installation is different for Windows ME and 2000. Find the Windows ME steps before Windows 2000 in this manual. Insert the support CD and click **Modem Driver** on the autorun menu to start the installation wizard.



(1) Click **OK** to begin installing drivers.

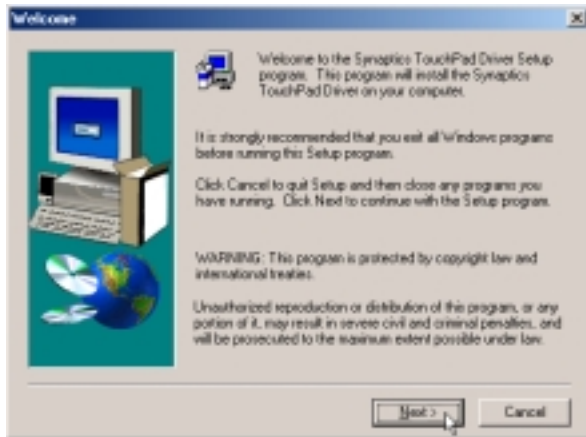


(2) Installation has finished. Click **OK** to restart your computer. **Your computer will automatically restart.**

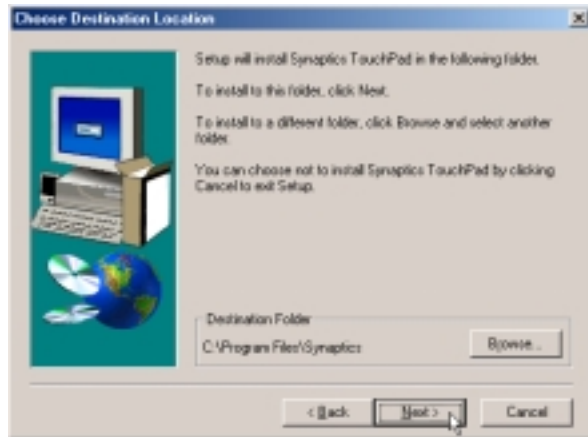
TouchPad

Installing the TouchPad Driver for Windows ME

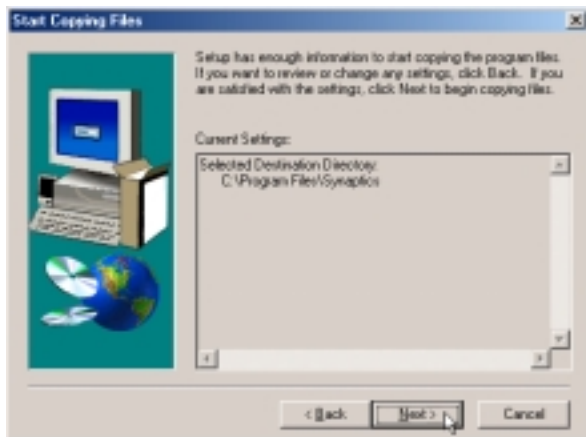
Windows 2000 has different installation steps (see next page). Insert the support CD and click **TouchPad** on the autorun menu to start the installation wizard.



(1) Click **Next** after reading the Welcome message.



(2) Browse to another destination folder or click **Next** to install to the specified directory.



(3) Click **Next** after reading the installation path.

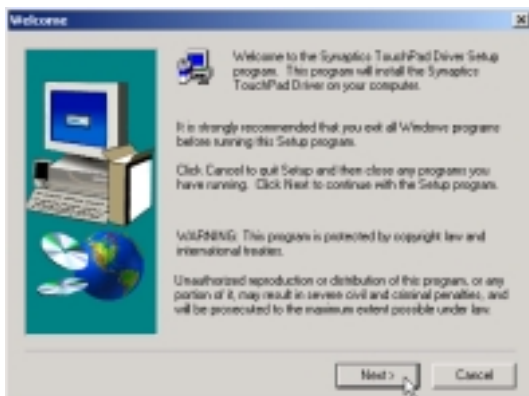


(4) Installation has finished. Select **No** so that you can install other items and then click **Finish**.

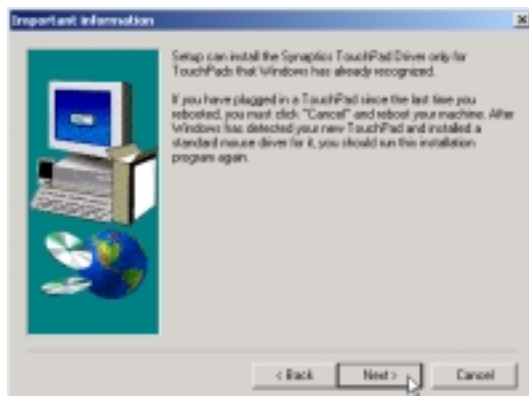
TouchPad (Cont')

Installing the TouchPad Driver for Windows 2000

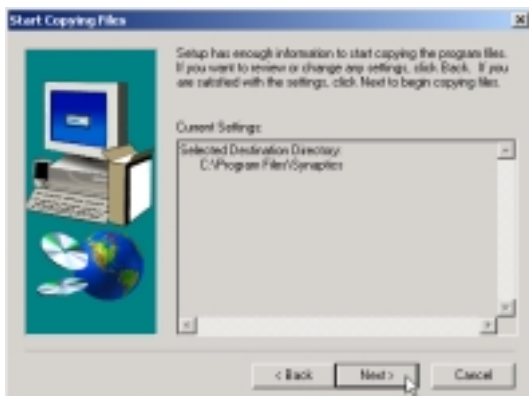
Windows ME has different installation steps (see previous page). Insert the support CD and click **TouchPad** on the autorun menu to start the installation wizard.



(1) Click **Next** after reading the Welcome message.



(2) Click **Next** to continue. The TouchPad has already been tested for Windows NT recognition.



(3) Click **Next** after reading the installation path.



(4) Click **Yes** to accept the driver because the driver on this support CD has been fully tested by the Notebook manufacturer to work correctly with MS Windows.



(5) Installation has finished. Select **No** so that you can install other items and then click **Finish**.

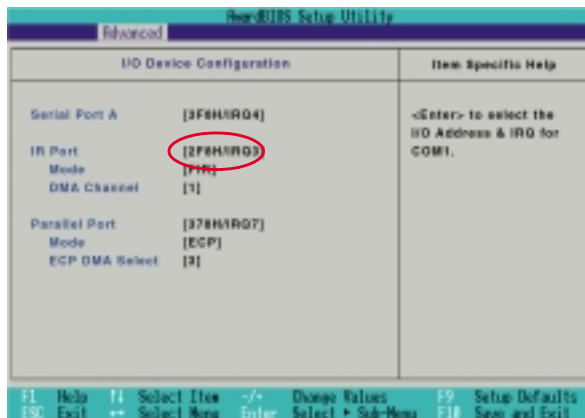
Fast IR Driver

Installing the Fast IR Driver for Windows ME & 2000

Installation is different for Windows ME and 2000. If your IR port is not enabled, you must first enable it in BIOS setup.

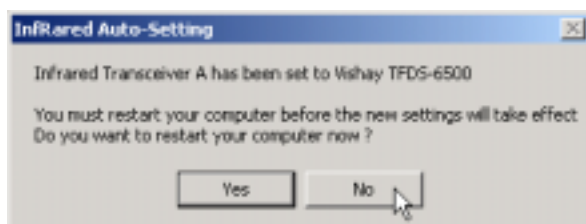
Enabling the IR port

1. Enter **BIOS Setup Utility** during bootup.
2. Enter the **Advanced** menu and select the sub-menu **I/O Device Configuration**
3. Set **IR Port** to **[2E8H/IRQ3]** or **[2F8H/IRQ3]** (the other two settings will conflict with serial port A)
4. Windows will install IR networking and IR serial port drivers. Answer **Yes** to restart your computer.



Setting the IR port (Windows 2000)

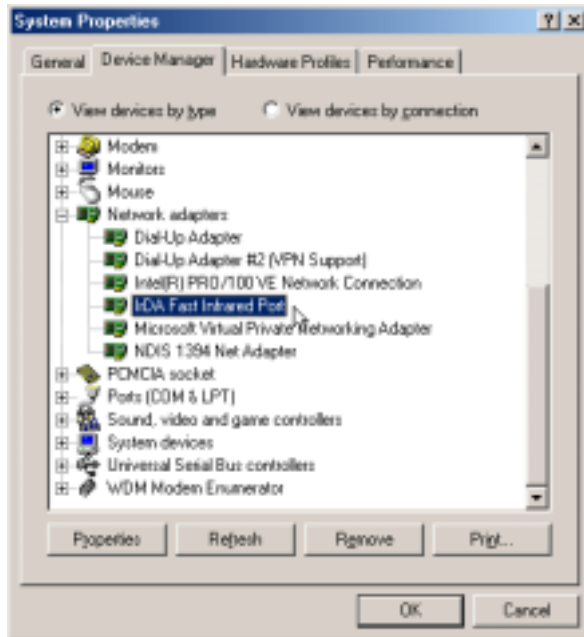
Insert the support CD and click **Fast IR Driver** on the autorun menu to make the setting as shown by the dialog box.



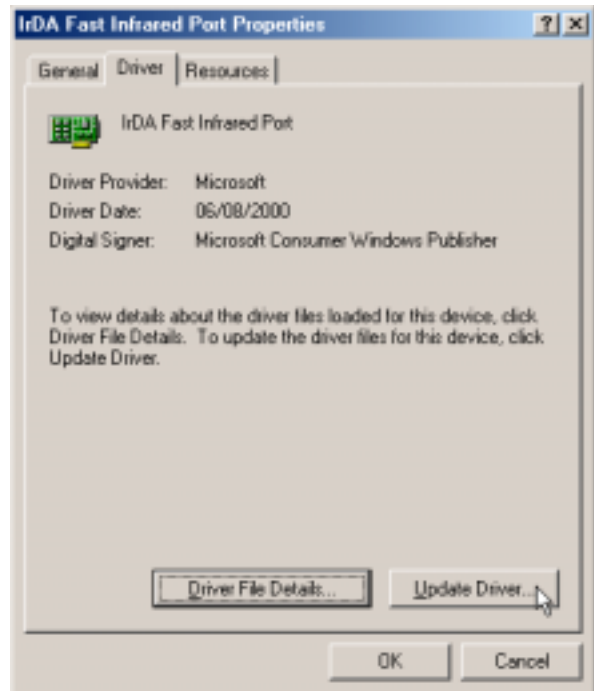
- (1) Click **No** so that you can install other drivers. Clicking Yes will automatically restart your computer.

Setting the IR port for Windows ME

Insert the support CD but clicking **Fast IR Driver** only brings up a readme file for the following procedure:



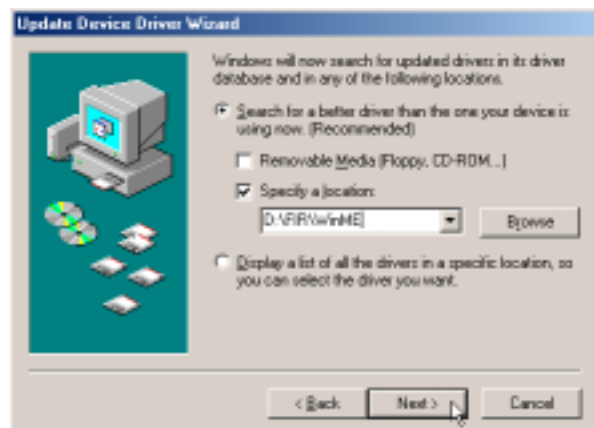
(1) Double-click **IrDA Fast Infrared Port** in “Device Manager”.



(2) Click **Update Driver** to install the new driver.

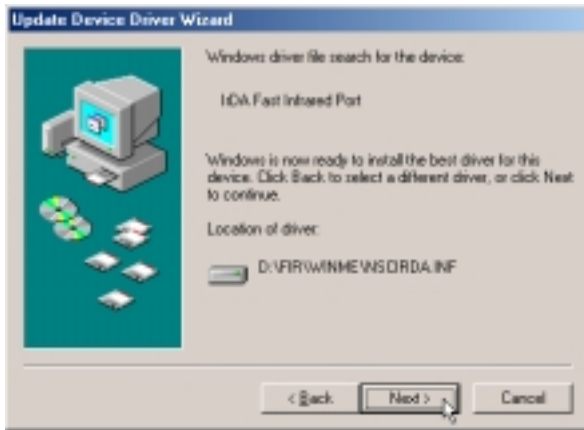


(3) Select “Specify...” and click **Next**.

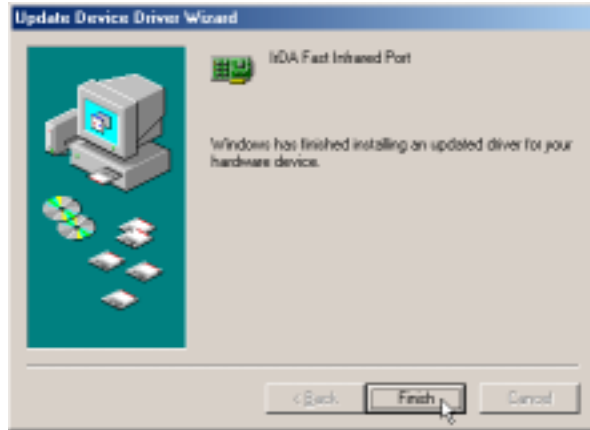


(4) Enter the path: **D:\FIR\WinME** click **Next**.

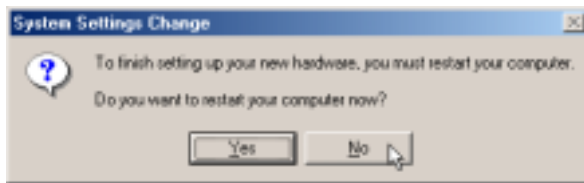
Setting the IR port for Windows ME (Cont')



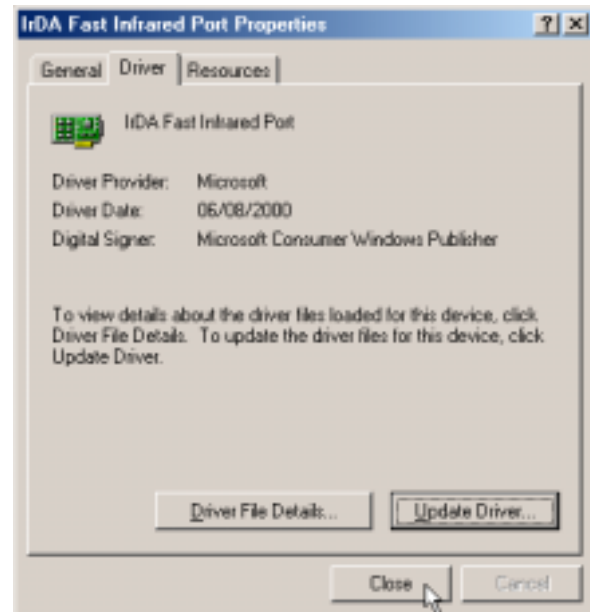
(5) Click **Next** when Windows find the NSCIRDA.INF on the support CD.



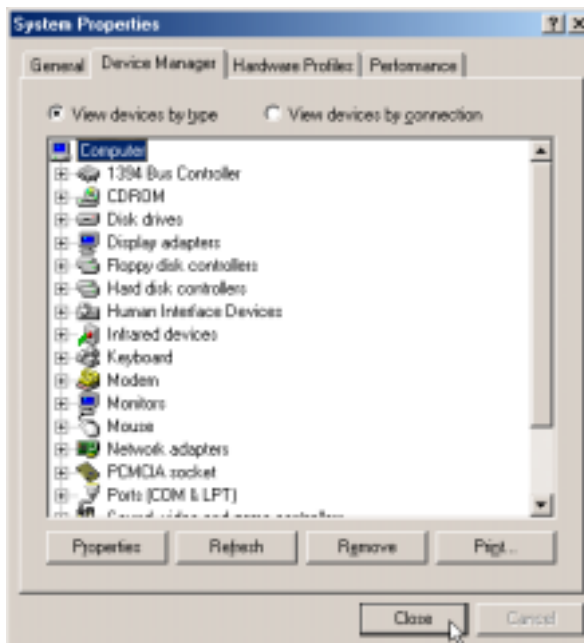
(6) The update has finished. Click **Finish** to exit.



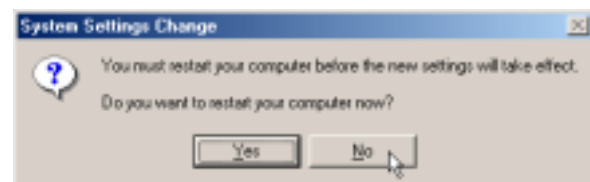
(7) Do not restart your computer. Click **No**.



(8) Click **Close** to exit the IrDA properties.

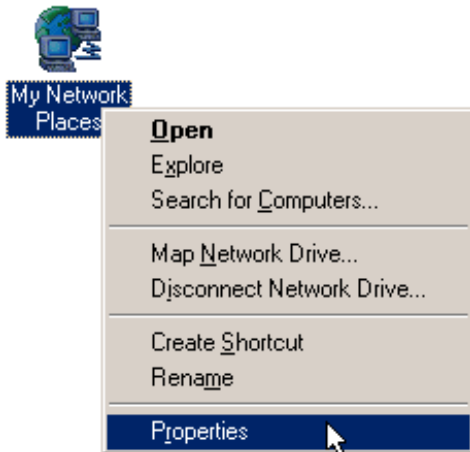


(9) Click **Close** to exit the "System Properties".

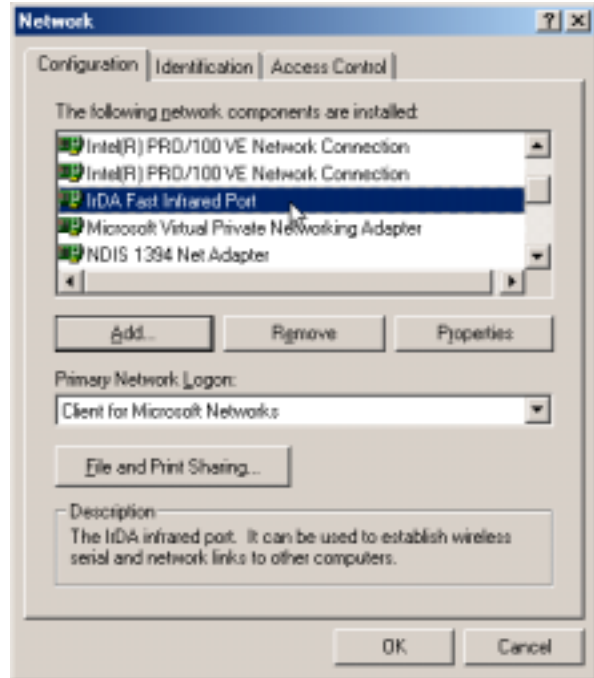


(10) Do not restart your computer. Click **No**.

Setting the IR port for Windows ME (Cont')



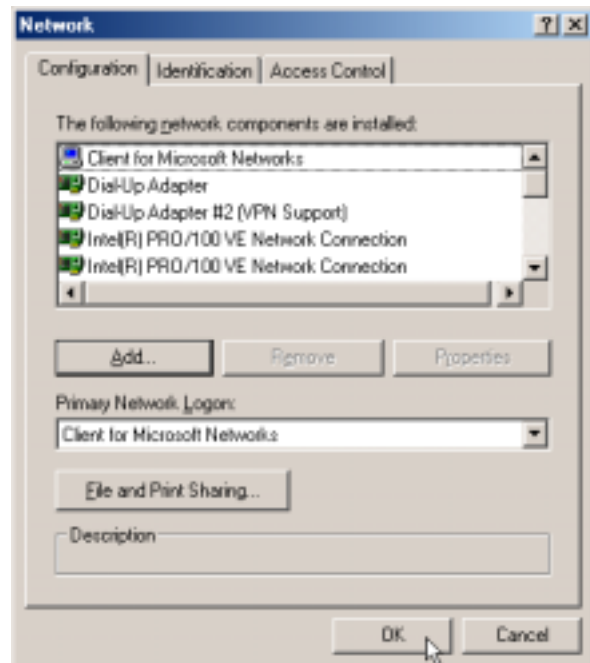
(11) Right-click "My Network Places" on the desktop and select **Properties**.



(12) Double click **IrDA Fast Infrared Port**.



(13) Click **Advanced** tab and select **Vishay TFDS-6101E/6501R** for "Infrared Transceiver A" and click OK.

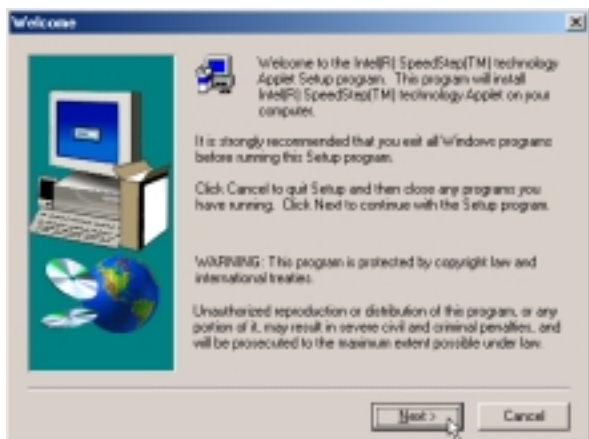


(14) Click **OK** to close Network configuration.

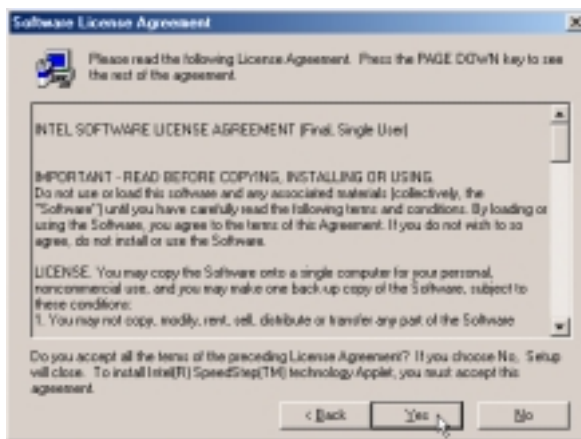
SpeedStep

Installing SpeedStep for Windows ME & 2000

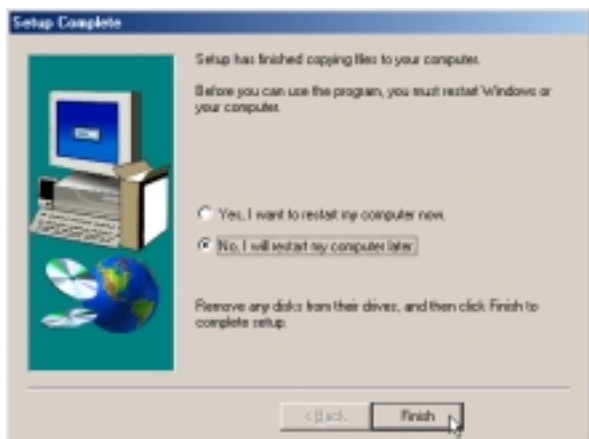
Installation is the same for Windows ME and 2000. Insert the support CD and click **SPEEDSTEP** on the autorun menu to start the installation wizard.



(1) Click **Next** after reading the welcome message.



(2) Click **Next** after reading the license agreement.

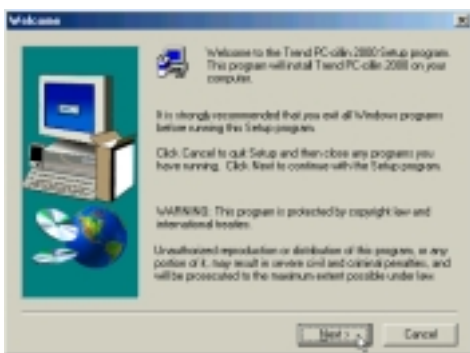


(3) Installation has finished. Select “**No...**” and click **Finish** to so that you can install other items and restart your computer later.

PC-cillin 2000

Installing the PC-cillin 2000 Anti-Virus Software for Windows ME

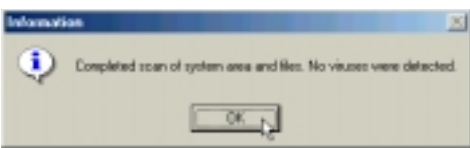
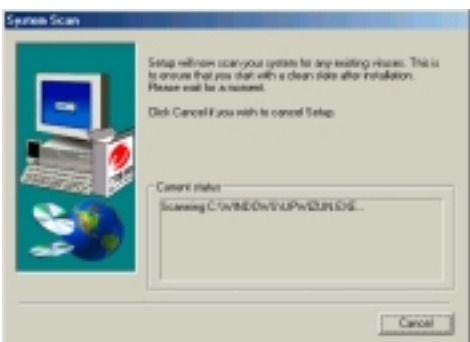
Installation is different for Windows ME and 2000. The following are steps for Windows ME. Insert the support CD and click **PC-cillin 2000** on the autorun menu to start the installation wizard.



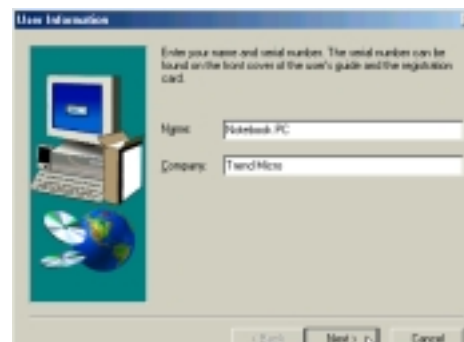
(1) Click **Next** to begin the installation wizard.



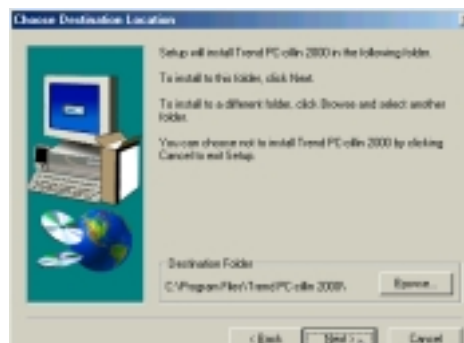
(2) Click **Yes** after reading the "Agreement".



(3) Wait while your setup checks your system for viruses based on the included pattern file. (This is usually older than what is available on the Internet at "<http://www.trend.com>". You should rescan your hard drives after updating the virus pattern.) Click **OK** when completed.

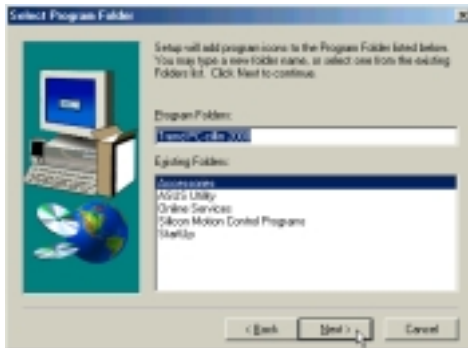


(4) Enter your "Name" and "Company" (if relevant) and click **Next**.

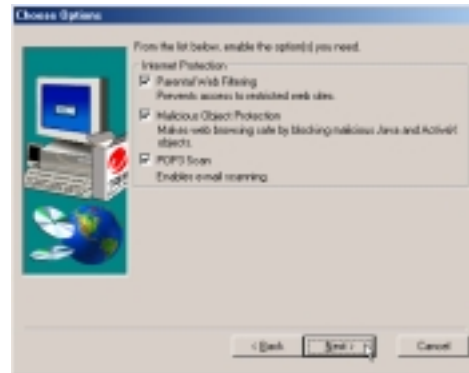


(5) Choose another destination folder or click **Next** to use the default.

Installing the PC-cillin 2000 for Windows ME (Cont')



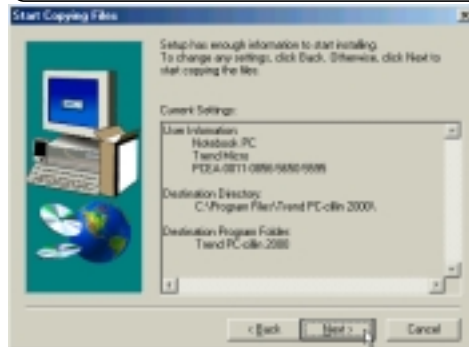
(6) Choose another folder, create a new folder, or click **Next** to use the default folder for the program icons.



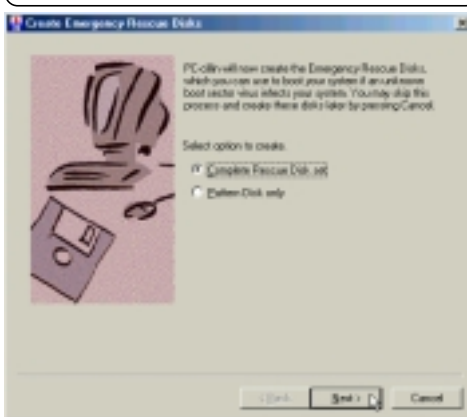
(7) Make Internet and Desktop settings and click **Next** to continue.



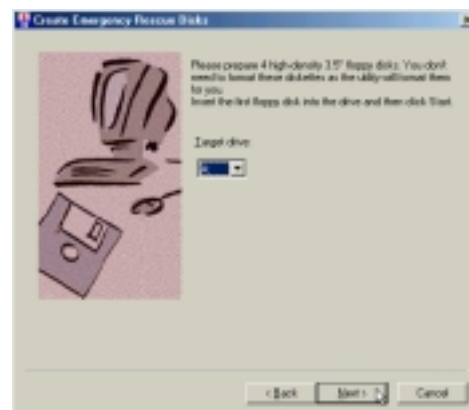
(8) Make proxy settings if necessary and click **OK** to continue.



(9) Check the installation settings and click **Next** to continue.

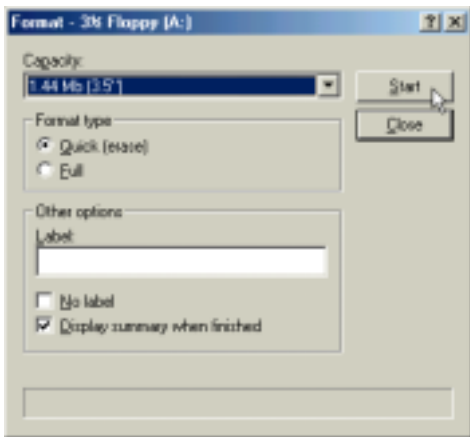


(10) You will be asked to create either complete rescue disks or virus pattern disks. Select one and click **Next**. Click **Cancel** to skip to "Setup Complete".

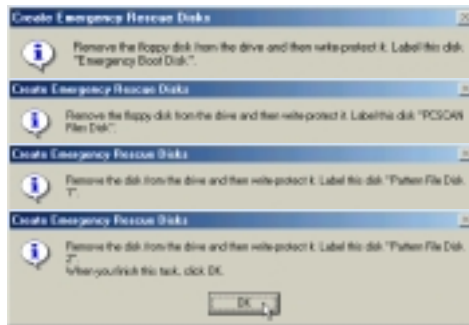


(11) Select a target floppy disk drive and click **Next**.

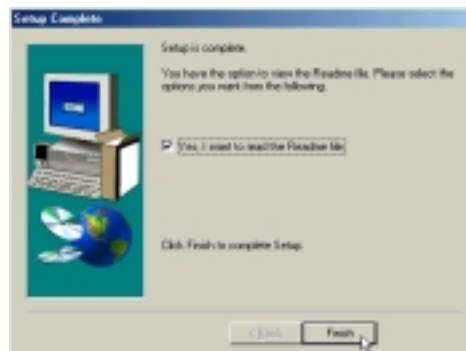
Installing the PC-cillin 2000 for Windows ME (Cont’)



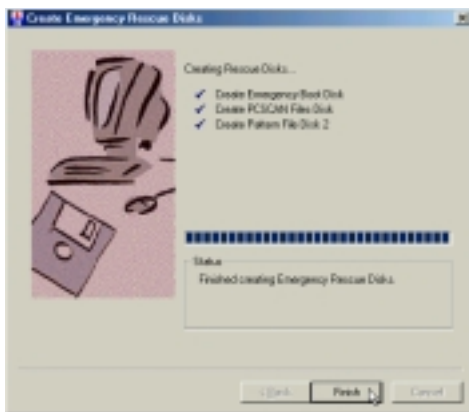
(12) You will be asked to format your floppy disk. Use **Quick** (or Full if necessary) and click **Start**. Click **Close** when format is completed. If you chose the full rescue disks, you have to repeat this step four times.



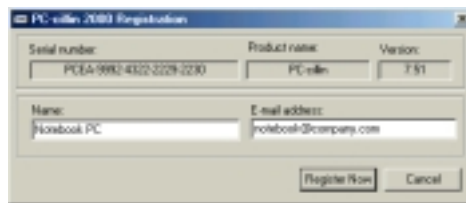
(13) You will be asked to repeat this step four times if you chose the “Complete Rescue Disk Set”.



(15) Click **Finish** when the setup is complete.

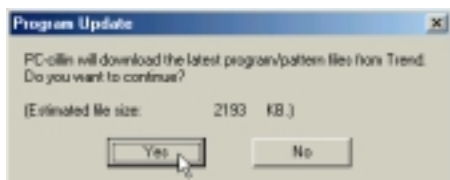


(14) Click **Finish** when the “Rescue Disks” are created.

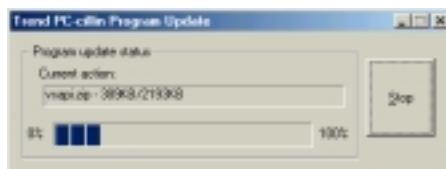


(16) Enter your “Name” and “Email Address” to register PC-cillin software.

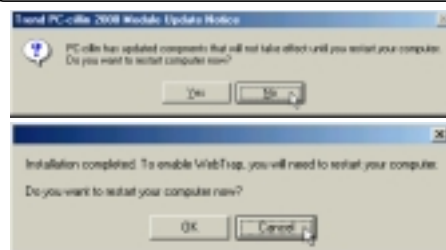
Installing the PC-cillin 2000 for Windows ME (Cont')



(17) Click **Yes** to update PC-cillin's program and virus pattern files.



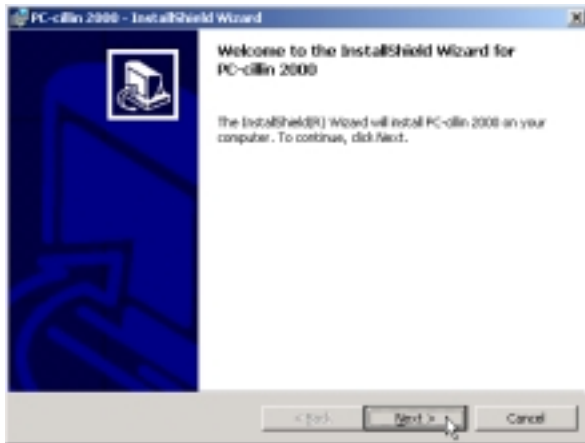
(18) Be patient while your computer connects to the Internet and downloads necessary files.



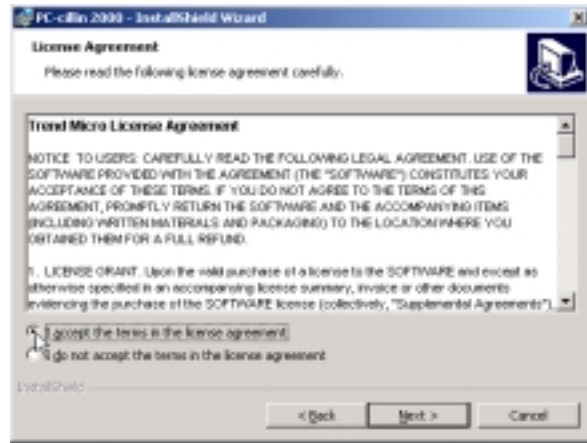
(19) You can answer **No** and **Cancel** so that you can install other drivers then restart your computer later.

Installing the PC-cillin 2000 Anti-Virus Software for Windows 2000

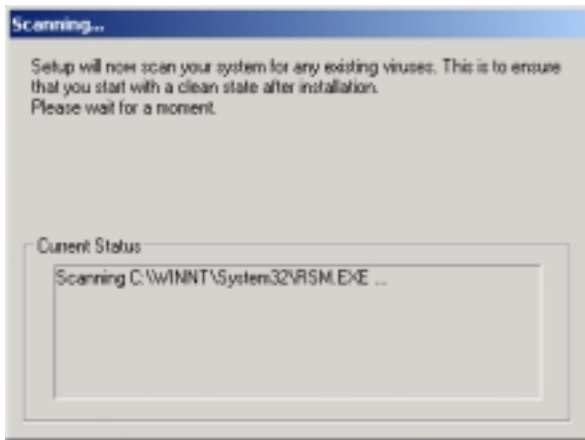
Installation is different for Windows ME and 2000. The following are steps for Windows 2000. Insert the support CD and click **PC-cillin 2000** on the autorun menu to start the installation wizard.



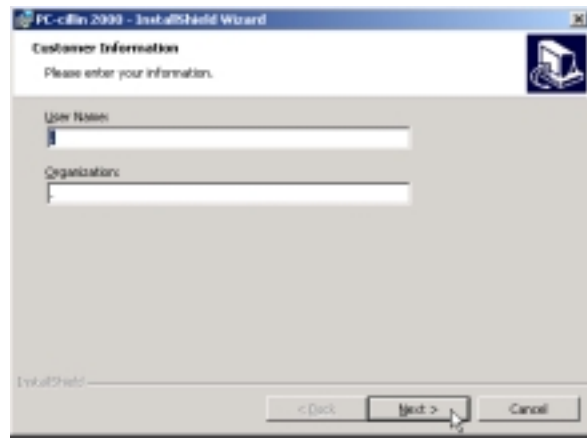
(1) Click **Next** after reading the welcome message.



(2) Click **Next** after reading the license agreement.

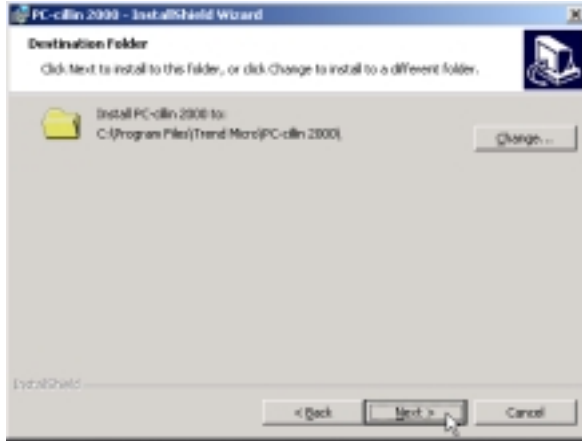


(3) Wait while your setup checks your system for viruses based on the included pattern file. (This is usually older than what is available on the Internet at "<http://www.trend.com>". You should rescan your hard drives after updating the virus pattern.) This screen will change when completed.

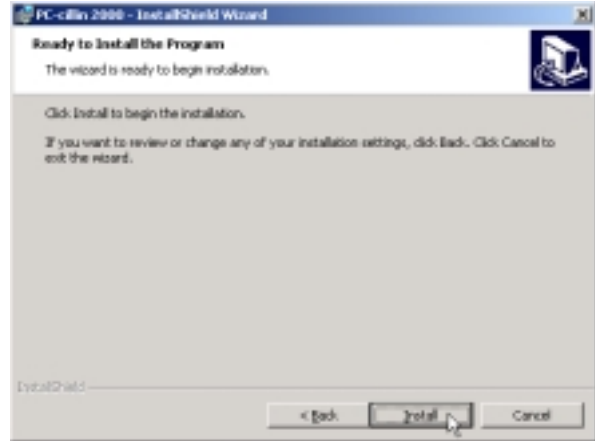


(4) Enter your "User Name" and "Organization" if applicable. Click **Next** to continue.

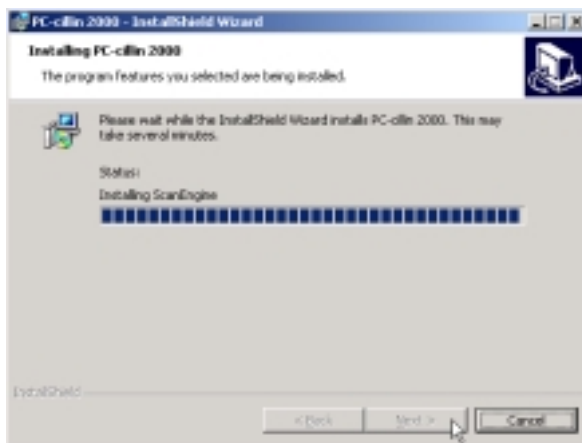
Installing PC-cillin 2000 for Windows 2000 (Cont')



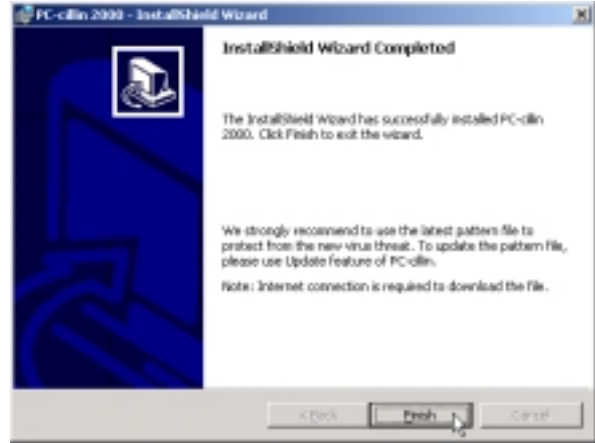
(5) Change the destination folder or click **Next** to install to the specified directory.



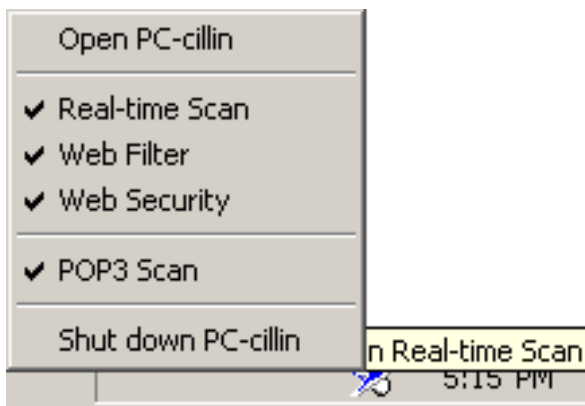
(6) Click **Install** now or click Back to make changes to the installation settings.



(+) Wait while installation takes place.



(7) Installation has finished. Select **Finish** to exit the installation wizard. No restart is necessary.

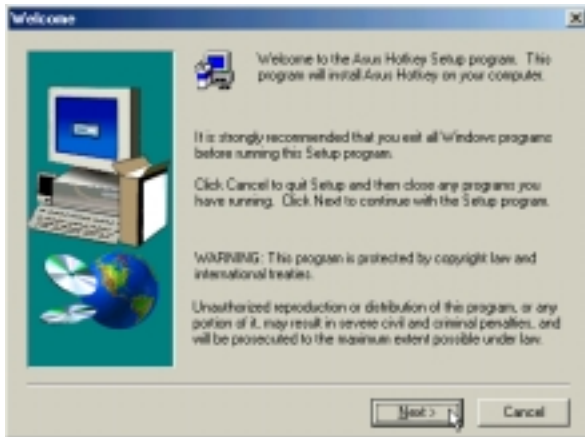


(*) An icon will be placed in your taskbar to show protection status and allow quick access to the PC-cillin software settings. Right-click the icon for quick software settings.

Hotkey Utility

Installing the Hotkey Utility for Windows ME & 2000

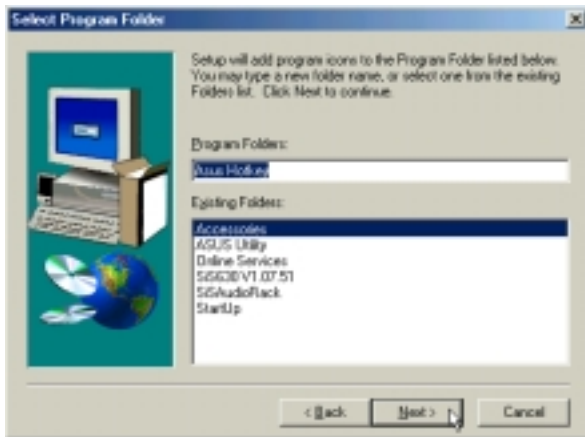
Installation is the same for Windows ME and 2000. Insert the support CD and click **Hotkey Utility** on the autorun menu to start the installation wizard.



(1) Click **Next** after reading the welcome message.



(2) Choose another destination folder or click **Next** to use the default.



(3) Choose another folder, create a new folder, or click **Next** to use the default folder for the program icons.

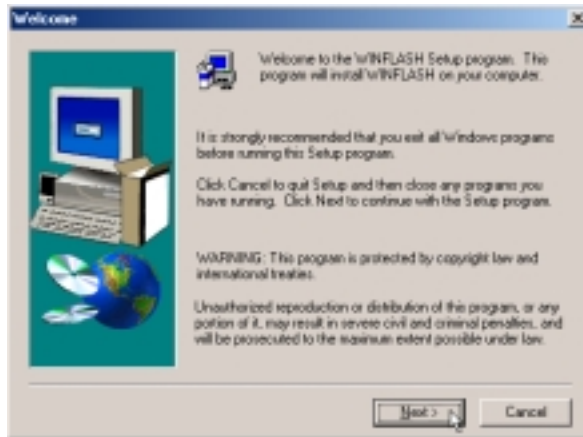


(4) Click **Finish** to exit the installation wizard and execute the selections. You can deselect the check boxes before clicking Finish if you want.

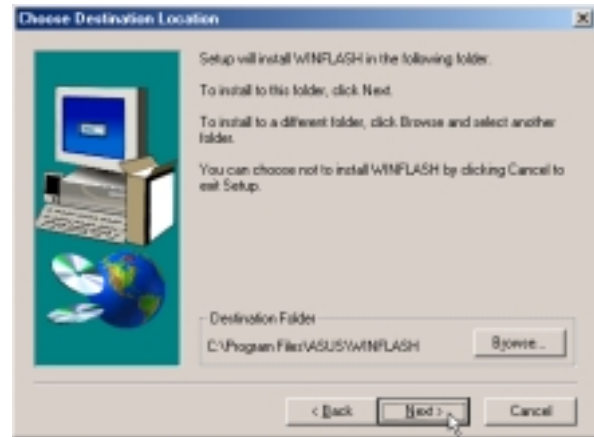
Windows Flash Utility

Installing the Windows Flash Utility for Windows ME & 2000

Installation is the same for Windows ME and 2000. Insert the support CD and click **Windows Flash Utility** on the autorun menu to start the installation wizard.



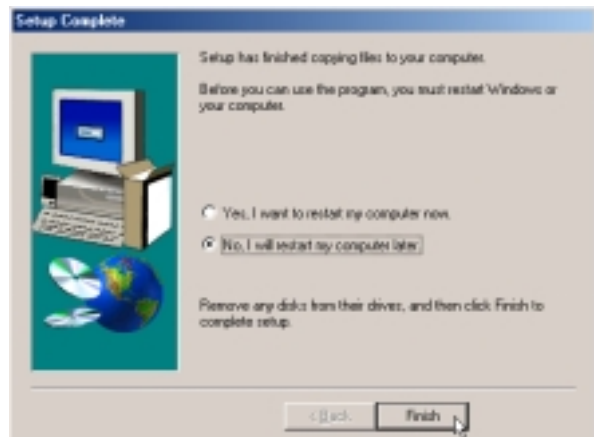
(1) Click **Next** on the “Welcome” screen.



(2) Choose another destination folder or click **Next** to use the default.



(3) Choose another folder, create a new folder, or click **Next** to use the default folder for the program icons.



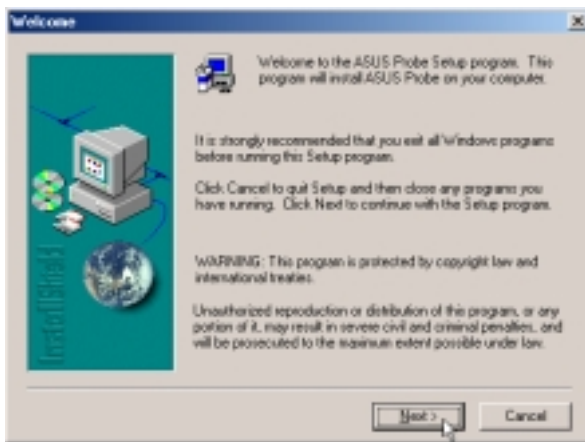
(4) Installation has finished. Select “**No...**” and click **Finish** to so that you can install other items and restart your computer later.

ASUS PC Probe

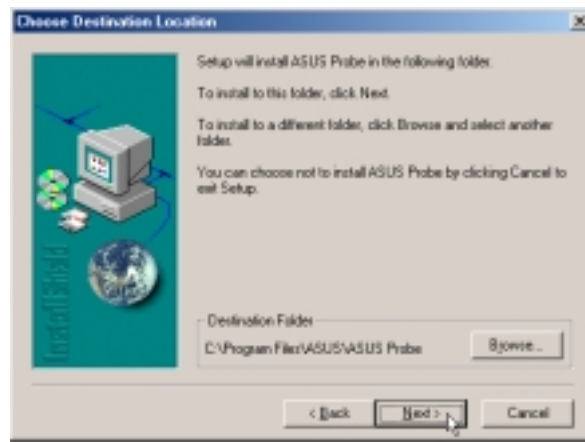
Installing PC Probe for Windows ME & 2000

Installation is the same for Windows ME and 2000. Insert the support CD and click **PC Probe** on the autorun menu to start the installation wizard.

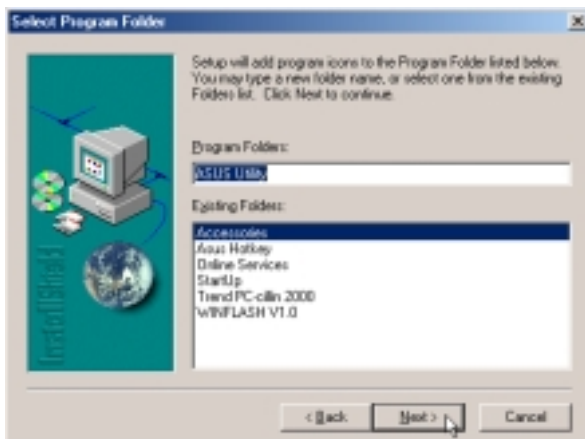
NOTE: In order for PC Probe to run, Intel's LDCM and other hardware monitoring software cannot be installed. You must first uninstall other such software before installing PC Probe.



(1) Click **Next** after reading the welcome message.



(2) Choose another destination folder or click **Next** to use the default.



(3) Choose another folder, create a new folder, or click **Next** to use the default folder for the program icons.

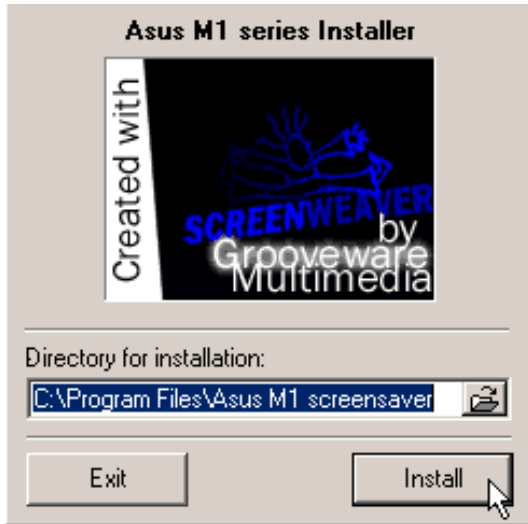


(4) Installation has finished. **Deselect “...restart my computer now.”** and click **Finish** to so that you can install other items and restart your computer later.

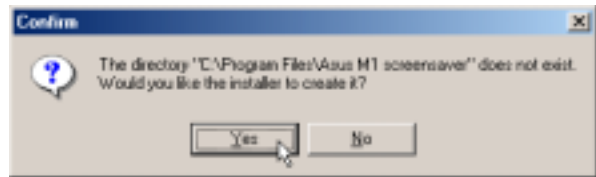
Screen Saver Utility

Installing the Screen Saver Utility for Windows ME & 2000

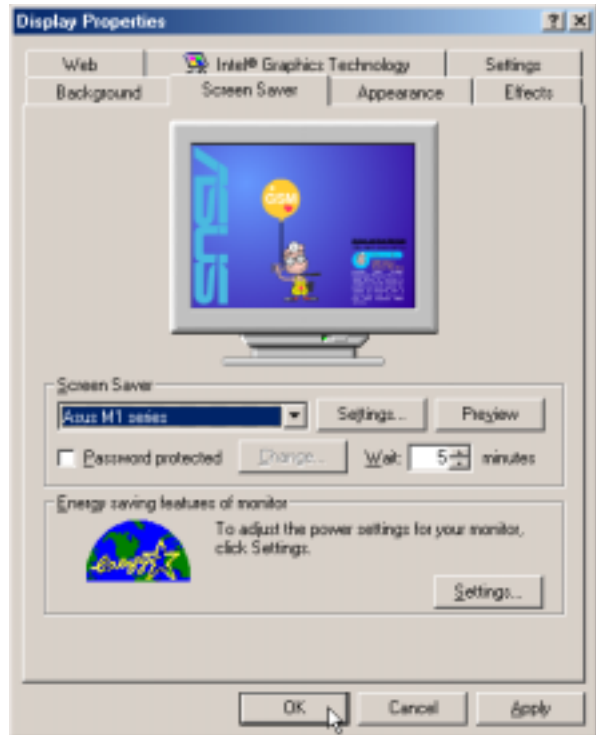
Installation is the same for Windows ME and 2000. Insert the support CD and click **Screen Saver Utility** on the autorun menu to start the installation wizard.



(1) Enter a different installation path or click **Install** to use the specified path.



(2) Click **Yes** to create the installation folder. The screen saver will install and run immediately.

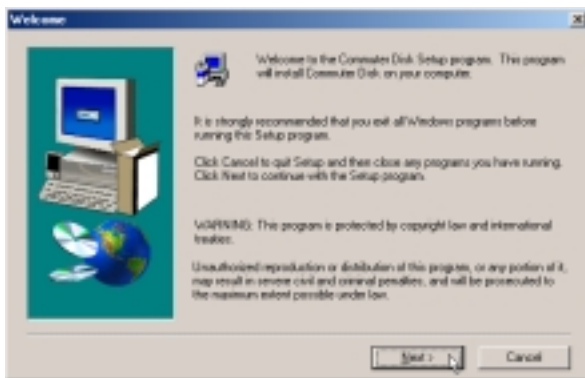


(3) There are no “Settings” available for this screen saver. Change the “Wait” time before starting the screen saver if you desire and click **OK**.

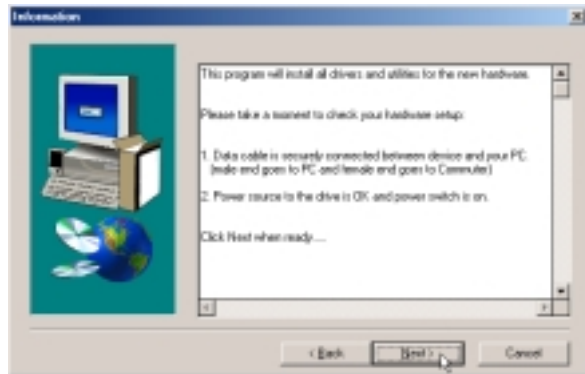
PortDock Driver

Installing PortDock Driver for Windows ME

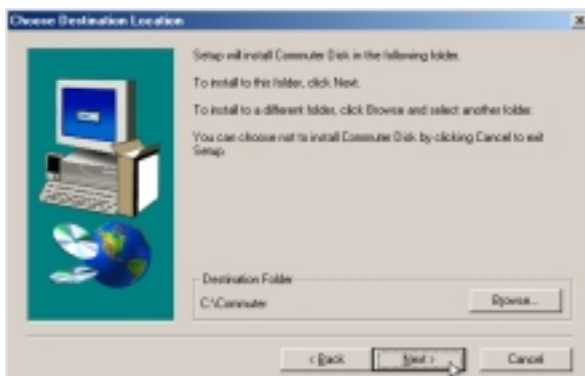
Installation is **not available for Windows 2000**. Insert the support CD and click **PortDock Driver** on the autorun menu to start the installation wizard.



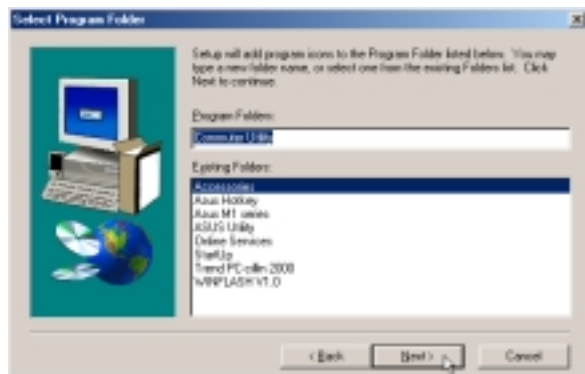
(1) Click **Next** after reading the welcome message.



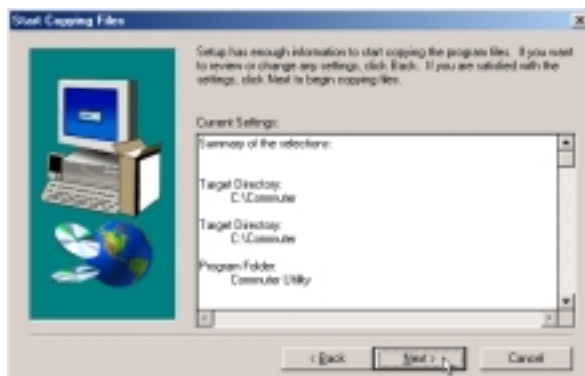
(2) Click **Next** after reading the information.



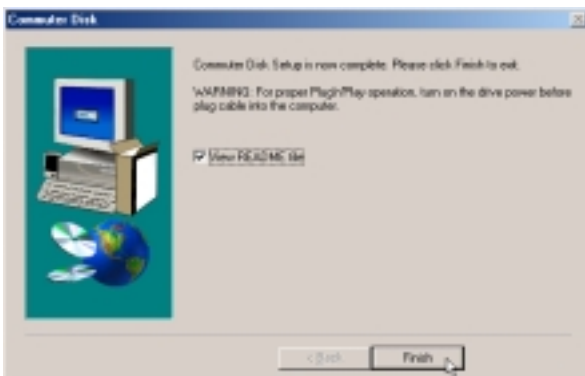
(3) Choose another destination folder or click **Next** to use the default.



(4) Choose another folder, create a new folder, or click **Next** to use the default folder for the program icons.



(5) Click **Next** after reading the installation settings.



(6) Installation has finished. Click **Finish** to exit.

Notebook PC
Software Reference

Windows ME & 2000

Contents

VGA DRIVER	47
Display Settings for Windows ME and 2000	48
Display Properties	48
Changing Resolutions	48
Advanced Configurations	48
Information Page	48
“Color” Settings	49
“Display” Settings	49
“Schemes” Settings	50
“Schemes” Advanced	51
SYNAPTICS TOUCHPAD	53
Overview of Synaptics® TouchPad Features	54
Tap on the Pad Instead of Pressing the Buttons	54
Drag Icons, Windows and Other Objects without Using Buttons	54
Adjust the Overall Touch Sensitivity	55
Customize Buttons and Taps	55
Prevent Accidental Pointing While Typing	56
Scroll Through A Document without Using Scroll Bars	56
Zoom In/Out and Pan on Documents	56
Move the Pointer Long Distances	57
Fine Tune the Pointer Movement	57
Accessories	57
More About the TouchPad	57
Property Pages	57
Scrolling Properties Page	58
Tap Zones Properties Pages	59
More Features Properties Page	60
Button Actions Properties Page	61
Touch Properties Page	62
Edge Motion Properties Page	63
Frequently Asked Questions	64

PC-CILLIN 2000	67
Welcome to PC-cillin	68
What's New in PC-cillin 2000	69
What is a Computer Virus?	70
Test Virus	70
How Viruses Spread	71
Virus Writers	71
HOTKEY UTILITY	73
ASUS Hotkey	74
Buttons	74
Hotkey Actions	75
Adding a Program to Run	78
WINDOWS FLASH UTILITY (WINFLASH)	79
Updating Your BIOS	80
Resetting Your BIOS	80
ASUS PC PROBE	81
Welcome to ASUS PC Probe	82
Starting ASUS PC Probe	82
Using ASUS PC Probe Monitoring	83
ASUS PC Probe Task Bar Icon	84
APPENDIX	85
Modem Communication Regulations	86
FCC Regulations	86
FCC Part 68 Requirements	86
Modem Declaration Of Conformity	87
Canadian Department Of Communications (CDOC):	87

VGA Driver

Topics Covered:

Display Properties

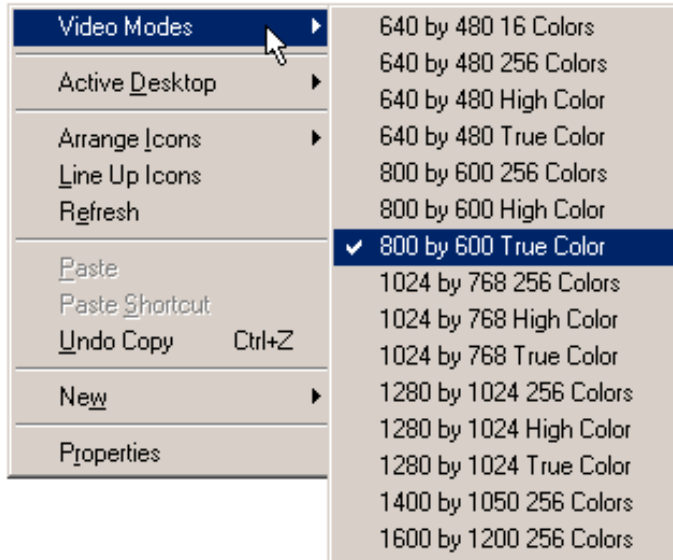
Display Settings

Windows ME & 2000

Display Settings for Windows ME and 2000

Screen captures shown here are those of Windows ME. Windows 2000 will appear slightly different.

Display Properties



Changing Resolutions

After installing the graphics drivers, right clicking the desktop will allow you to quickly change resolutions by selecting **Video Modes**.

Advanced Configurations

Selecting **Properties** will allow you to enter Windows Display Properties. The graphics drivers installed an extra tab labeled **Intel Graphics Technology** where you can make advanced graphics configurations.

Windows 2000 requires you to click **Advanced** on the “Settings” page to enter the Intel Graphics Properties.



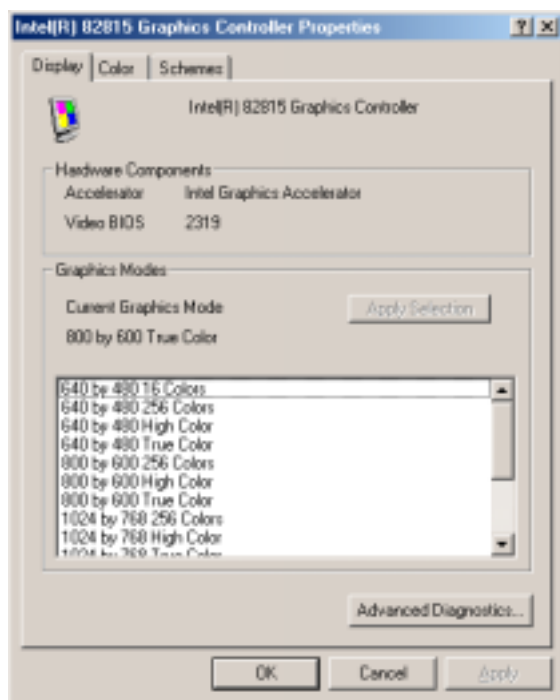
Information Page

The main page gives some basic information about the graphics controller and a few links to access information, drivers, or technical support from Intel.

This Notebook PC provides a complete network of information, drivers, and technical support that should be used in place of Intel's because this Notebook PC's technical support works directly with Intel to provide you complete services for your Notebook PC.

Find technical support and warranty information on the inside cover of the User's Manual or included in the Notebook PC's packaging.

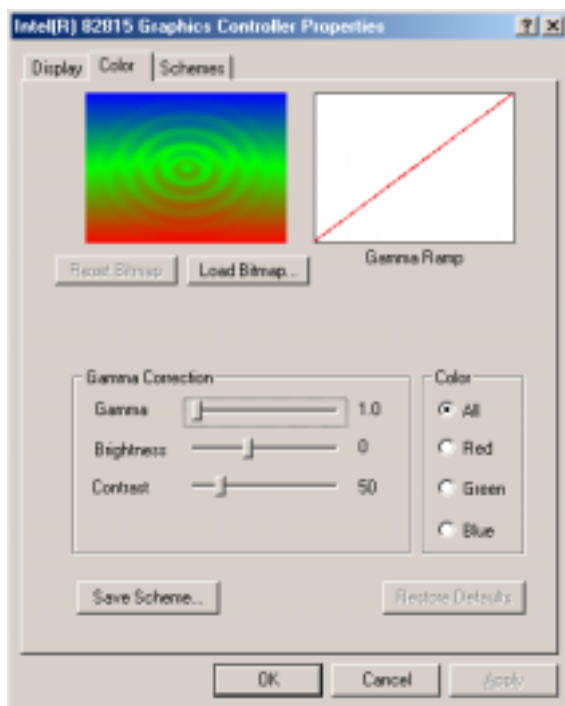
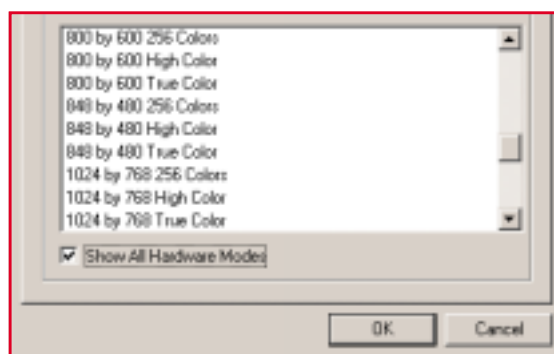
Display Settings for Windows ME and 2000 (Cont’)



“Display” Settings

Use the **Display** settings to change resolution and color.

Clicking **Advanced Diagnostics** brings you to an extended set of graphics modes. Click **Show All Hardware Modes** to see other modes; but to prevent problems to your display, you will not be allowed to select any modes here.



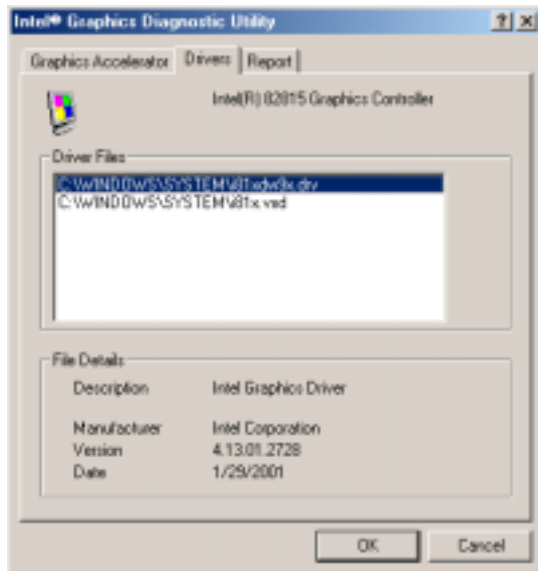
“Color” Settings

Use the **Color** page to correct gamma, brightness, or contrast. This can be done for each RGB color individually or all together.

When changes are made, **Restore Defaults** will be available to easily return to factory settings.

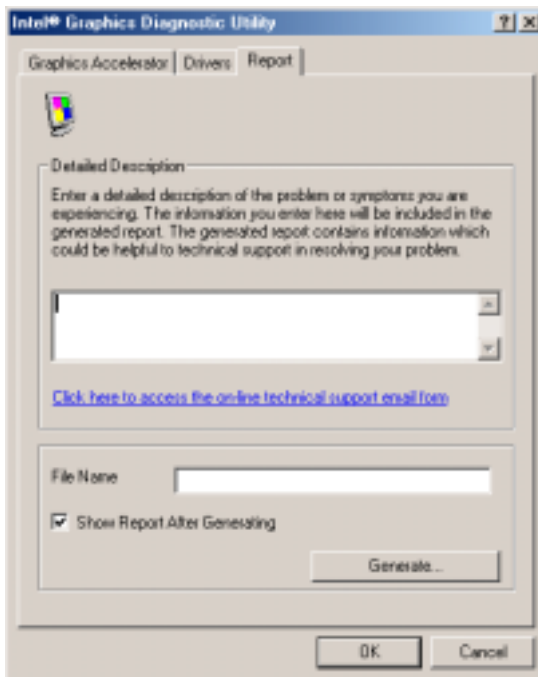
Load Bitmap allows you to load your own picture into the preview window. Click **Reset Bitmap** to return to the factory preview picture.

Display Settings for Windows ME and 2000 (Cont')



Advanced Diagnostics - Drivers

Click the **Drivers** tab to view driver locations and versions.

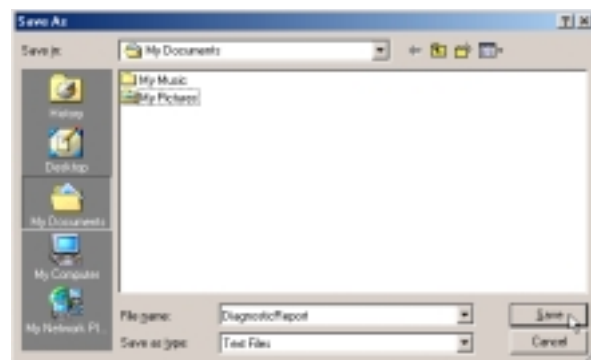


Advanced Diagnostics - Report

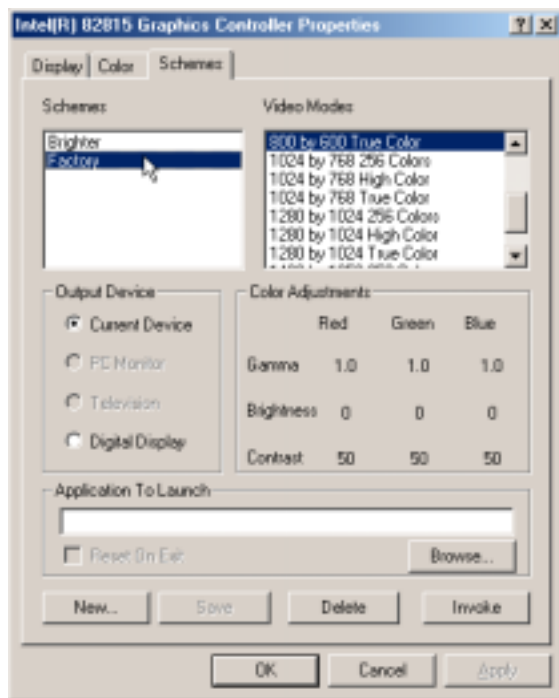
The Report page allows you export information about your graphics driver to a text file so that you can include it in technical support requests or for your own information.

Click the link to access technical support on Intel's web site. Again, you should first use the technical support provided by your Notebook PC retailer.

To export the information, click **Generate** and select a location for the file.

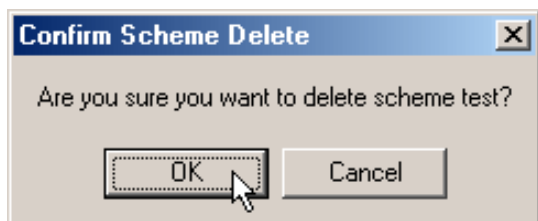
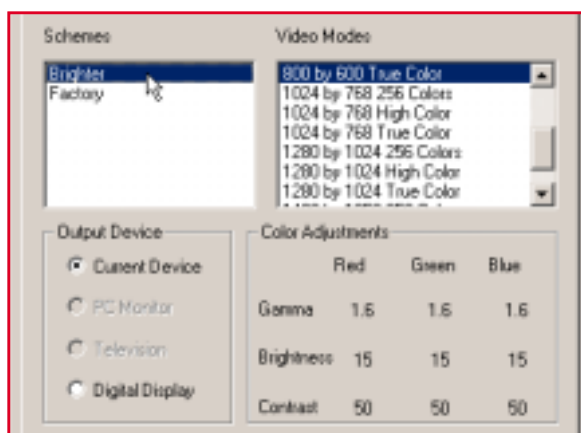


Display Settings for Windows ME and 2000 (Cont’)



“Schemes” Settings

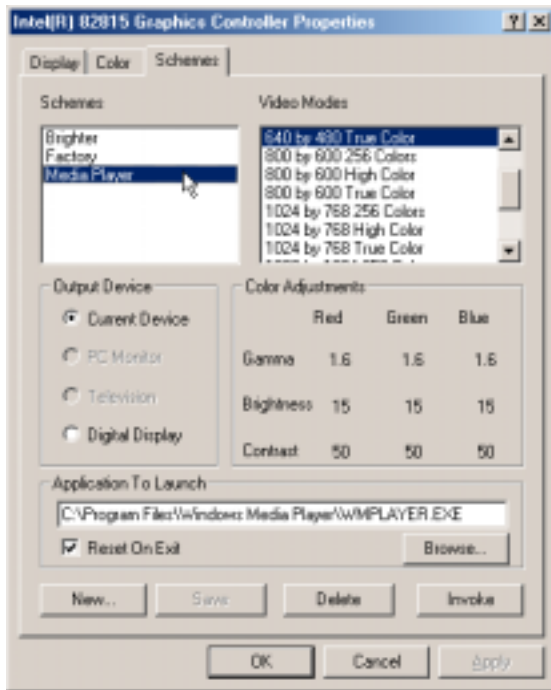
Schemes saved in the Color page are shown under **Schemes** on the “Schemes” page. I have saved two schemes here as an example: “Factory” so that I can see the default values and “Brighter” so that I can see dark corners when playing those high-resolution RPG games.



Deleting a Scheme

There are no factory defined schemes. To delete a user-defined scheme, click on a scheme and click the **Delete** button. A confirmation with the name of the scheme will be shown (“test” shown here as an example). Click **OK** to proceed with deleting the scheme.

Display Settings for Windows ME and 2000 (Cont')



“Schemes” Advanced

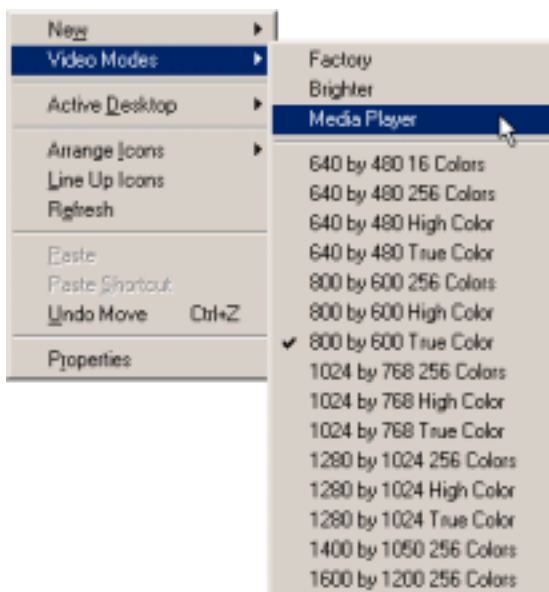
On the Schemes page, you can also save “Video Modes” (resolution and color) and launch an application.

Because many videos still use 640x480 to decrease file size and appear a little dark, I will set up a new scheme for watching videos.

In my example here, I clicked on **Brighter** scheme, added **640 by 480**, browse to Windows Media Player, selected **Reset on Exit**, and clicked the **New** button to save the scheme as “Media Player.” I can then click **Invoke** to test out my settings. When satisfactory, I close Media Player and close the Display Properties windows.

Quick Launching a Scheme

To launch my schemes, I simply right-click on my desktop and click the scheme I want. A smile comes to my face as I watch some movies provided free on the Internet.



Synaptics TouchPad

Topics Covered:

Overview of the TouchPad

Scrolling Properties Page

Tap Zones Properties Page

More Features Properties Page

Button Actions Properties Page

Touch Properties Page

Edge Motion Properties Page

Frequently Asked Questions

Overview of Synaptics® TouchPad Features

Your Synaptics TouchPad is much more powerful than an old-fashioned mouse. In addition to providing all the features of an ordinary mouse, your TouchPad allows you to:

- Tap on the Pad Instead of Pressing the Buttons
- Drag Icons, Windows and Other Objects without Using Buttons
- Adjust the Overall Touch Sensitivity
- Customize Buttons and Taps
- Prevent Accidental Pointing While Typing (also known as Palm Check)
- Scroll Through a Document Without Using Scroll Bars
- Zoom In/Out and Pan on Documents
- Move the Pointer Long Distances
- Fine Tune the Pointer Movement

Tap on the Pad Instead of Pressing the Buttons

Tapping on the surface of the pad is the same as clicking the left mouse or TouchPad button (i.e. the primary TouchPad button). Tapping is usually quicker and more convenient than using the button. To double-click, just tap twice. A light, quick tap works best; very hard or very slow taps are less likely to work.

Drag Icons, Windows and Other Objects without Using Buttons

Often, you need to hold the mouse or TouchPad button down while moving the pointer (to move an icon or window around the screen, for example). This action is called dragging. Just like clicking and double clicking, you can also drag without using the button.

To move or drag an object (equivalent to pressing and holding the left TouchPad button):

- 1) Position the pointer over the object and tap twice, down-up-down, leaving your finger on the TouchPad on the second tap. This action is sometimes called tap-and-a-half.
- 2) Now move the selected object by sliding your finger across the TouchPad surface.
- 3) Lift your finger to drop the object.

Tap-and-a-Half

You might wonder what happens when you reach the edge of the pad and you are dragging an object. The Synaptics TouchPad has a feature called Locking Drags. This feature allows you to lift your finger from the pad without ending the drag. You can drag an object across the screen using several finger strokes. To end a Locking Drag action, tap again. The Synaptics TouchPad also has a feature called Edge Motion to help with long distance dragging. See Move the Pointer Long Distances for details.

The Tap and Drag and Locking Drags features are located on the Touch Properties Page in the Mouse Properties dialog.

Adjust the Overall Touch Sensitivity

You can control how much finger pressure you must apply before the TouchPad responds by adjusting the Touch Sensitivity slider. This slider is located on the Touch Properties Page in the Mouse Properties dialog.

At higher (more sensitive) Touch Sensitivity settings, the TouchPad recognizes even a very slight touch. If you see undesired or erratic pointer motion, try a lower setting. Lower (less sensitive) settings require a firmer touch to move the pointer. In general, a lighter touch works best.

Customize Buttons and Taps

Most TouchPads come with two buttons that work just like traditional mouse buttons. You can customize the behavior of these buttons.

Tapping on the TouchPad surface also performs the same action as pressing a button. Tapping in the center of the pad will always produce a left-click (the action of the primary button), but you can configure each of the four corners of the TouchPad surface to act as different buttons. These special corner regions are called tap zones. With four corner tap zones, the center of the TouchPad, and the two physical buttons you can turn your TouchPad into a seven-button mouse!

A customization example:

Suppose you want to use your TouchPad like a three-button mouse. You can configure the left TouchPad button to produce middle clicks when pressed. Remember that tapping on the TouchPad will produce left clicks, and pressing the right TouchPad button will produce right clicks. For additional convenience, you can configure the top right corner tap zone of the TouchPad to produce right clicks. Looking at the TouchPad surface in the picture below, taps in the top right corner (the red shaded area) will produce right clicks, but tapping anywhere else on the TouchPad (the solid gray area) produces left clicks.

An Example TouchPad

There are many different actions that you can assign to the buttons and tap zones. The following actions are provided as built-in features with the Synaptics TouchPad device driver. Additional actions might be available if you have installed any third-party TouchPad Plug-In software.

- Jump to the Start Button. This action causes the pointer to jump to the Start button in the Windows task bar and automatically opens the Start Menu.
- Jump to the current application's menu. This action causes the pointer to jump to the leftmost entry in the application's window menu (usually the File menu) and automatically pops up the submenu.
- Minimize the current application. This action minimizes the current application's window. If the current application's window is already minimized, this action will restore it to its normal size and location.
- Maximize the current application. This action maximizes the current application's window (expands it to cover the full screen). If the current application's window is already maximized, this action will restore it to its normal size and location.
- Run a program of your choosing. This action allows you to specify the name of any program you want to run automatically when you click the button or tap in the tap zone.

To customize taps and buttons, go to the Button Actions Properties Page in the Mouse Properties dialog.

Prevent Accidental Pointing While Typing

Unintentional pointer movement and accidental taps can be caused by accidentally brushing the surface of the TouchPad with your palm or another part of your hand. The results of this contact can be observed as a changing cursor location when typing, causing subsequent text to appear in the wrong place. Or text may “spontaneously” be highlighted and replaced. Most often, this unwanted pointing activity occurs when typing on the keyboard. The TouchPad can detect and prevent accidental and unwanted pointer movement while you are typing.

If you see unwanted pointer movement occurring while you are typing, you can adjust the Palm Check slider located on the Touch Properties Page in the Mouse Properties dialog. Move the slider thumb to the right towards Maximum. Now accidental brushes of your hand on the TouchPad while you are typing are more likely to be ignored.

On the other hand, in the midst of typing, you might purposefully use the TouchPad to point and click, and sometimes the TouchPad may not seem to respond. In this case, move the slider thumb to the left towards Minimum. Now pointing during typing is less likely to be interpreted as an accidental brush with the pad surface, and will not be ignored.

Scroll Through A Document without Using Scroll Bars

Virtual Scrolling allows you to perform a very common task – scrolling documents – without having to move the pointer away from your work. By simply sliding your finger up and down the right edge of the TouchPad, the contents of the current window will scroll vertically. Similarly, by sliding your finger left and right along the bottom edge of the TouchPad, the contents will scroll horizontally. You no longer need to laboriously maneuver the pointer to the small scroll bar elements; you can scroll no matter where the pointer happens to be.

Virtual Scrolling works with document windows (like word processors and spreadsheets), and it also works with file lists, font lists, and other scrollable items. As a rule, you can use Virtual Scrolling when you are working in any window that has a scroll bar.

And Virtual Scrolling does more than just make scrolling more convenient. It also can make scrolling smoother. When you scroll by dragging the scroll thumb with the mouse, many applications do not re-display the document window until you release the mouse button. Virtual Scrolling makes navigation through documents easier, because it forces the application to re-display the window contents as you scroll.

How do I use Virtual Scrolling?

To customize the Virtual Scrolling feature, go to the Scrolling Properties Page located in the Mouse Properties dialog.

Zoom In/Out and Pan on Documents

Note that zooming and panning only work in applications that support the Microsoft Intellimouse. With Intellimouse aware applications, you can zoom and/or pan to quickly maneuver your way through lengthy documents. To jump to a distant location within your document, zoom out, click on the desired location, then zoom in. To scroll horizontally and vertically at the same time, simply pan in a diagonal direction!

Move the Pointer Long Distances

Suppose you are dragging an object, scrolling at high speed (via Virtual Scrolling!), or merrily moving the pointer when you suddenly reach the edge of your TouchPad. Don't despair, the Synaptics TouchPad Edge Motion feature comes to the rescue! Edge Motion helps with long distance pointer motion. When you reach an edge of the TouchPad, the pointer (or scroll thumb when Virtual Scrolling) continues to move in the same direction until you lift your finger from the TouchPad or move your finger away from the edge.

Edge Motion speed can be pressure-sensitive or constant. Pressure-sensitive speed means that the harder you press, the faster the object or pointer moves.

You can configure the Edge Motion feature on the Edge Motion Properties Page in the Mouse Properties dialog.

Fine Tune the Pointer Movement

The Synaptics TouchPad has many additional features to help you control the way your pointer moves. Please take a look at the list of additional features.

Accessories

Your TouchPad is a productivity enhancing tool, designed for serious work. But we think it should also be fun. We have included two fun application programs that demonstrate some of the capabilities of the TouchPad: Pressure Graph and The Incomparable, Mysterious Synaptics MoodPad.

To run these applications, click once on the Synaptics TouchPad Icon in the Taskbar, go to the Accessories menu and select the desired application.

More About the TouchPad

The TouchPad detects your finger by capacitive sensing (it is not sensitive to heat or applied force). As your finger approaches the pad, it alters the electric field in the vicinity of the pad surface. The TouchPad sensor is just a circuit board with a matrix of conductive traces printed on the top surface. A special chip on the back side of the TouchPad continuously measures the capacitance of these traces, and thus can determine the presence and location of your finger.

To get the most out of your TouchPad, be sure that the TouchPad driver software is installed. If the Synaptics TouchPad driver is properly installed, the Mouse Properties dialog will include several TouchPad tabs along the top in addition to the standard mouse tabs.

Property Pages

The property pages allow you to customize TouchPad settings for your Notebook PC. The following pages will describe each property page with the Synaptics logo. The "Buttons", "Pointers", and "Pointer Options" pages come with Windows and should be described in Windows documentation.

Scrolling Properties Page

The Scrolling properties page allows you to customize the Virtual Scrolling capabilities of your TouchPad.

In some applications, the scroll zones which activate Virtual Scrolling can be used for zooming too.

Enabling Virtual Scrolling of the Active Window

Check the appropriate boxes on this page for the type of Virtual Scrolling that you prefer:

- Horizontal Scrolling
- Vertical Scrolling
- Coasting

Choose where you want Virtual Scrolling to occur:

- Scroll Selected Item

- OR -

- Scroll Item Under Pointer

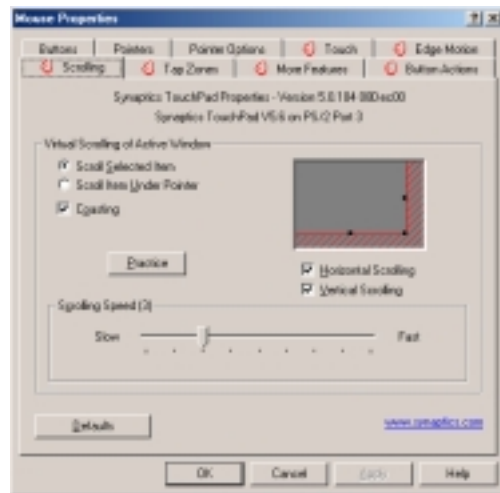
Customizing Scroll Zone Sizes

This page includes a small map of the TouchPad with the scroll zones shaded in red. See the Scroll Zone TouchPad Map for a more detailed description.

You can adjust the size of each zone by dragging one of the black resize handles on the TouchPad map. If you are having trouble activating the Virtual Scrolling feature, you might want to try making the scroll zones wider. If you find that scrolling sometimes gets activated when you didn't mean to scroll, try narrowing the scroll zones.

Customizing Virtual Scrolling Speed

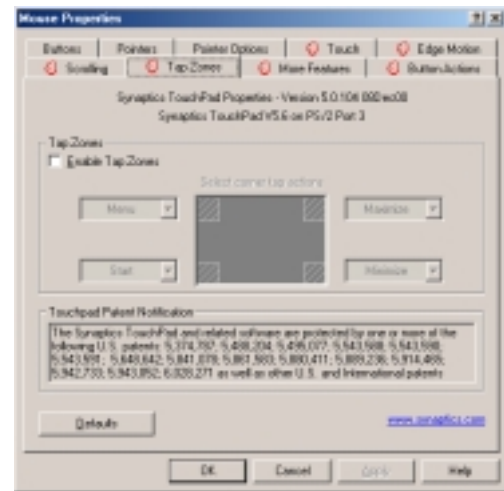
You can control the speed of Virtual Scrolling by adjusting the Scrolling Speed slider on this page. Drag the slider thumb to the right for faster scrolling.



Tap Zones Properties Pages

The Tap Zones properties pages allow you to assign custom actions to taps in the Touchpad's corner zone regions (or tap zone regions).

The Synaptics TouchPad driver may also control other pointing devices attached to your system. If the Synaptics TouchPad driver is controlling more than one pointing device on your system, the Synaptics pages on the Mouse control panel will have a drop-down box listing all of the pointing devices that are controlled. You may set separate settings for each by selecting the appropriate device (settings which don't apply to a particular pointing device will be grayed out).



Customizing the Tap Zones

When the tap zones are enabled, each tap inside a corresponding tap zone region on your TouchPad can have a different meaning or action. For example, you can define the upper right corner tap zone to mean right clicks. Then when you tap your finger on the upper right corner of your TouchPad, it is as if you are clicking the right mouse or TouchPad button.

This page includes a small map of the TouchPad with the active tap zones shaded in red. Next to each zone is a text box specifying the action for that zone.

To Customize:

1. To activate the corner tap zones, check the box next to the text Enable Tap Zones. An unchecked box means that all taps on every part of the TouchPad surface will have left-click behavior.
2. To change an action for a particular zone, locate the text box nearest the zone. The text box displays the current action for this zone (for example, it might say No Zone which means that this particular zone is disabled and any taps here will produce the default left-click action). Click on the down arrow button located to the right of the text to display a list of actions. Select the desired action.
3. Each tap zone can be resized to be as large or as small as you desire by dragging one of the black resize handles located on the TouchPad map.

More Features Properties Page

The More Features properties page allows you to control the following features of your Synaptics TouchPad:

Stop Pointer at Window Borders

This feature constrains the pointer to stay inside the active window. When you try to move the pointer outside the window, it stops at the edge. If you try a second time, the pointer is free to leave the window.

Stopping the pointer at the window borders makes it easy to access controls that lie around the edges of windows. For example, to close or resize a window, you can casually toss the pointer in the general direction of the close box or the edge of the window, and the pointer will stop exactly where you want it.

Snap to Default Button

This feature automatically moves the pointer to the Default Button when a dialog box appears on your screen.

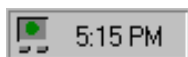
Slow Motion Key

Sometimes you might need more accuracy when pointing with the TouchPad, such as in a drawing program. The speed of the pointer can make this type of accuracy difficult to obtain. To slow down the pointer movement, you can specify a slow motion key. Then, for slow pointer movement, press and hold this key as you move the pointer.

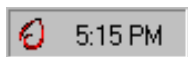
Constrained Pointer Key

At times you may want to restrict the pointer to move only horizontally or only vertically. You can specify a constrained pointer key, then press and hold this key as you move the pointer. The initial pointer direction when holding this key determines whether the pointer is constrained to move only horizontally or only vertically.

Synaptics TouchPad Tray Icon



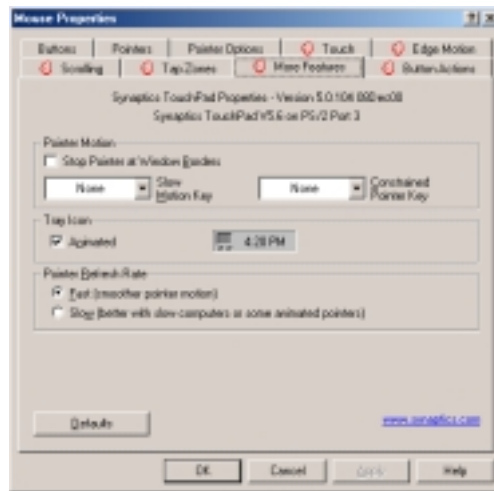
The Synaptics TouchPad tray icon appears in the Windows Taskbar near the clock. You can choose between two icons:



This is the animated Touch Meter icon. The size of the dot on the touch meter indicates the amount of finger pressure. The icon turns blue while Virtual Scrolling is in progress.

This is the non-animated Synaptics logo icon.

You can access the “TouchPad Properties” dialog by double clicking on either tray icon.



Button Actions Properties Page

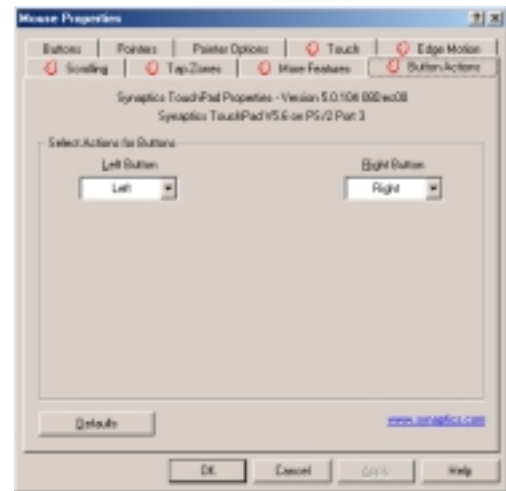
The Button Actions properties page allows you to customize the physical buttons of your TouchPad.

Customizing Button Assignments

You can customize the TouchPad buttons in the same way that you customize the tap zones.

To Customize:

Each button has a text box that displays the current action (for example, it might say Left, which means the left-click or primary-click action). To display a list of possible actions, click on the down arrow button located to the right of the text. Select the desired action.



Touch Properties Page

The Touch properties page allows you to customize the tap response and sensitivity of your TouchPad.

Taps

Check the appropriate boxes in the Taps section of the Touch Properties Page for the tapping capabilities that you prefer:

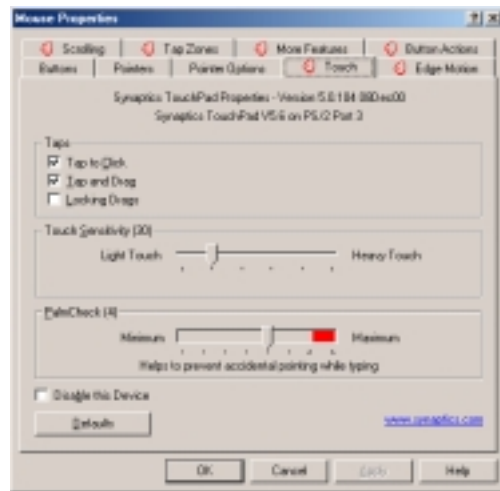
- Tap to Click
- Tap and Drag
- Locking Drags

Touch Sensitivity

Use the Touch Sensitivity slider to control how much finger pressure you must apply before the TouchPad responds. See [Adjust the Overall Touch Sensitivity](#).

Palm Check

The Palm Check slider controls the TouchPad's detection of accidental and unwanted pointing movement. In addition to detecting palm contact with the TouchPad, the TouchPad can ignore much of the accidental and unwanted pointer movement that may occur while typing (due to accidentally contacting your TouchPad). See [Prevent Accidental Pointing While Typing](#) for more details.



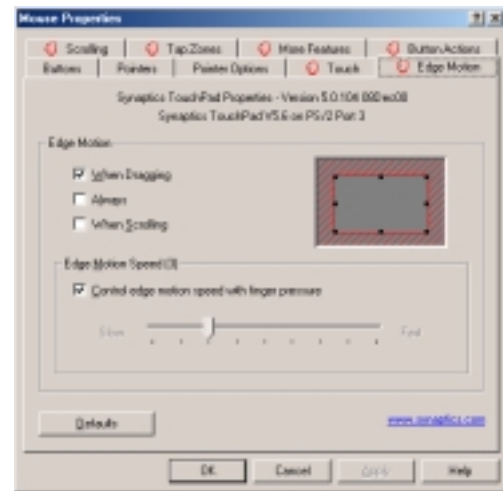
Edge Motion Properties Page

The Edge Motion properties page allows you to customize the long distance pointer motion capabilities of your TouchPad. When your finger reaches the edge of your TouchPad, the Edge Motion feature allows the pointer to continue to move until you lift your finger. See [Move the Pointer Long Distances](#) for more details about the Edge Motion feature.

Enabling Edge Motion

Check the appropriate boxes on this page for the types of Edge Motion that you desire:

- When Dragging
- Always
- When Scrolling



Customizing Edge Zone Sizes

This page includes a small map of the TouchPad with the edge zones shaded in red. See the [Edge Zone TouchPad Map](#) for a more detailed description. You can adjust the size of each zone by dragging one of the black resize handles on the TouchPad map. If you are having trouble activating the Edge Motion feature, you might want to try making the edge zones wider.

Customizing Edge Motion Speed

During Edge Motion, the speed at which the pointer (or dragged object or Virtual Scrolling scroll thumb) moves can be pressure-sensitive or constant. With pressure-sensitive speed, the harder you press the faster the object or pointer moves. For this type of speed, check the box labeled [Control edge motion speed with finger pressure](#).

If you prefer a constant speed for Edge Motion, you can adjust the speed with the [Edge Motion speed slider](#) located on this page.

Frequently Asked Questions

Q: When I use Virtual Scrolling, the pointer jumps over to the scroll bar, and then jumps back where it came from when I'm done. Is this normal?

A: Yes.

Q: Why doesn't the Virtual Scrolling feature work in some windows, even though they have a scroll bar?

A: In order to scroll, Virtual Scrolling must be able to "see" the window's scroll bar. If the scroll bar is partially obscured by another window, or partially off the screen, then Virtual Scrolling will not activate in that window. In general, a window's scroll bar must be entirely on the screen, and fully visible, in order to use Virtual Scrolling in that window. There is an exception to this rule: Virtual Scrolling has "special knowledge" about many common types of windows, and can scroll them even if their scroll bars are not visible on the screen. A very small number of applications use nonstandard scroll bars that might not work reliably with Virtual Scrolling.

Q: Why do some windows scroll smoothly, while others re-display their contents only occasionally as I scroll?

A: The way a window responds to its scroll bars is entirely up to the application which owns that window. Some applications "smooth-scroll," while others wait until you release the scroll bar before updating their contents. Virtual Scrolling "knows" about many common applications and window types, and uses this knowledge to "trick" many windows into smooth-scrolling (Microsoft® Word™ document windows, for example, do not normally smooth-scroll, but they do when you use Virtual Scrolling). If Virtual Scrolling does not "know" about a particular type of window, it still approximates smooth-scrolling by causing the window to re-display when your finger slows down or stops. This can help you more accurately scroll to the right place in a document.

Q: Why does the scroll thumb sometimes "jump around" when I scroll, and not go exactly where the pointer is?

A: Again, the application actually has complete control over the way the scroll thumb moves. Depending upon the window contents, some applications will actually prevent you from moving the scroll thumb to certain locations. Sometimes, the scroll thumb is only "allowed" to come to rest at one or two positions along the scroll bar! In these cases, even if you were to manually drag the scroll thumb with the pointer, you would find that it would "jump" to a final location when you released it. Virtual Scrolling, unfortunately, cannot control how applications manage their scroll bars.

Q: Why doesn't Virtual Scrolling work properly with Microsoft Internet Explorer?

A: Make sure you are using Internet Explorer version 4.01 or later, and that the Use Smooth Scrolling option on the Advanced page of the Internet Explorer Properties dialog is NOT checked.

Q: When I press and hold the shift key or the control key (CTRL), the pointer movement is either very slow or restricted to move only horizontally or only vertically. What is happening?

A: The shift keys and the control keys are special and are used for various things, such as selecting multiple files in Microsoft Windows Explorer or for zooming in and out on a spread sheet in Microsoft Excel. These keys can also be used for special pointer movement, such as for slowing the pointer down or for constraining the pointer to move only horizontally or only vertically. For example, you can assign the left shift key to be the Slow Motion Key. Then when you press and hold the left shift key, the pointer motion will be slower than usual. Note that you can still use this shift key for other special behaviors! You can still press and hold the left shift key to select multiple files in Microsoft Windows Explorer, but the pointer motion will also be a bit slower. If you see slow or constrained pointer movement when pressing shift or CTRL and you want to turn off this special behavior, go to the More Features Properties Page in the Mouse Properties dialog and uncheck the appropriate boxes.

PC-cillin 2000

Topics Covered:

PC-cillin 2000 Features

What's New in PC-cillin 2000

Test Virus

What is a Computer Virus?

How Viruses Spread

Virus Writers

Windows ME & 2000

Welcome to PC-cillin

Welcome to PC-cillin 2000, Trend Micro's award-winning antivirus software.

Here's what PC-cillin will do "straight out of the box":

- Checks for viruses every time you Open, Copy, Move, or Save a file
- Protects against downloading infected files from the Internet or FTP sites
- Guards against malicious Java applets and ActiveX controls while web surfing
- Monitors your Word and Excel sessions for macro viruses, using MacroTrap™
- Scans and cleans all files on your hard drive every Friday
- Scans all program files for viruses every month Checks all your saved documents for macro viruses.

Here's what you can do with just the click of a button:

- Scan every file on your system and clean any infected files
- Scan any file from Windows Explorer or My Computer by right-clicking the file icon
- Scan floppy diskettes and clean any infected files
- Check all of your Word and Excel document(s) for macro viruses
- If you use Outlook Express 4.0 or above or Eudora Pro 4.0 or above email clients, scan your email message attachments as they are being downloaded from the POP3 email server.
- Manually scan message attachments in your local Outlook 97/98/2000 folders

No Limits

Of course, if you're a person who likes to customize your software, there is no limit to the Scan tasks you can configure PC-cillin to perform.

You can "set and forget" as many tasks as you see fit. For each task, you can select the file types you want to scan for viruses, the action PC-cillin will take upon finding a virus (Clean the infected file, Delete it, Quarantine it, Pass it, or Rename / Deny Access to it), and other program details.

Scan Engine

Viruses are detected using Trend's 32-bit, multi-threaded scan engine and a process called pattern matching. In addition to catching known viruses, PC-cillin detects and intercepts previously unknown polymorphic, or mutation, viruses.

MacroTrap

Additional layers of protection come from MacroTrap™, Trend's macro virus scanning engine, which detects and removes both known and unknown macro viruses.

What's New in PC-cillin 2000

PC-cillin 2000 includes the following enhancements over the previous version:

- **Windows 2000 Support:** PC-cillin fully supports Windows 2000. Integration with the Windows installer means that you can install PC-cillin while installing other Windows components. PC-cillin is Windows 2000 compliant.
- **Antivirus scanning of POP3 mail:** If you use Microsoft Outlook Express 4.01 or above or Eudora Pro 4.0 or above as your email client, Trend PC-cillin 2000 will scan your email messages as they download from the POP3 server. Virus-infected attachments are stopped before they ever reach your computer!
- **Virus Scanning of Local Outlook Folders:** If you use Microsoft Outlook as your email client, Trend PC-cillin 2000 provides on-demand scanning of local folders for virus-infected attachments. Trend PC-cillin will automatically detect an installed copy of Microsoft Outlook on the computer and enable the user interface elements that permit the use of this feature. Please note that this feature does not scan messages stored on a Microsoft Exchange server, but only scans messages in local folders.
- **Incremental Virus Pattern Download:** No longer do you have to download the entire virus pattern file when updating your software. Trend PC-cillin 2000 supports incremental pattern updates whereby only the virus patterns that have changed since the last update are downloaded. This greatly reduces the download time, saving time and expense that you have to spend on Internet connection charges.
- **PC-cillin Can Scan Virtually All Media:** PC-cillin 2000 can scan the following types of drives in addition to conventional hard disk drives: CD-ROM, CD-R, CD-RW, PD, FDD, DVD, ZIP and LS120.
- **PCSCAN Command Line Scanner Supports Pattern Files Larger Than 1.44 MB:** Due to the large number of known computer viruses that have been identified, the virus pattern file is now too large to fit on a single 1.44 MB diskette. The emergency rescue disk creation utility can split the virus pattern file over several diskettes. Additionally, the PCSCAN command line scanner supports virus pattern files that have been spanned over more than one diskette.

What is a Computer Virus?

Simply put, a computer virus is a program that replicates. To do so, it will need to attach itself to other program files (for example, .exe, .com, .dll) and execute whenever the host program executes. Beyond simple replication, a virus almost always seeks to fulfill another purpose: to cause damage.

Called the damage routine, or payload, the destructive portion of a virus can range from overwriting critical information kept on your hard disk's partition table to scrambling the numbers in your spreadsheets to just taunting you with sounds, pictures, or obnoxious effects.

It's worth bearing in mind, however, that even without a "damage routine," viruses allowed to run unabated will continue to propagate—consuming system memory, disk space, slowing network traffic and generally degrading performance. Besides, virus code is often buggy and can also be the source of mysterious system problems that take weeks to understand. So, whether it was written to be harmful or not, a virus on your system can lead to instability and should not be tolerated.

Some viruses, in conjunction with "logic bombs," do not make their presence known for months. Instead of causing damage right away, these viruses do nothing but replicate—until the preordained trigger day or event when they unleash their damage routines across the network.

To learn more about any particular virus, or about viruses in general, you can access Trend Micro's online Virus Encyclopedia that comes with the program or visit Trend Micro's web site at: <http://www.antivirus.com>

Test Virus

The European Institute of Computer Anti-virus Research, along with antivirus vendors, has developed a test file that can be used in checking your installation and configuration.

The file is not an actual virus; it will cause no harm and it will not replicate. Rather, it is a specially created file whose "signature" has been included in the Trend Micro virus pattern file and as such, can be detected by the virus engine.

You can download this file from: <http://www.antivirus.com/vinfo/testfiles/index.htm>!Internet ("http://www.antivirus.com/vinfo/testfiles/index.htm")

Alternatively, copy the following text into a text editor and then save the file with a *.com extension.

```
X5O!P% @AP[4PZX54(P^)7CC)7}$EICAR-STANDARD-ANTIVIRUS-TEST-FILE!$H+H*
```

You may need to disable real-time scanning before downloading the file. Once on your machine, you can use the test virus to see for yourself how PC-cillin's various scanning features work.

How Viruses Spread

There are many ways for a virus to enter your system:

- Email attachments
- World Wide Web (WWW) sites
- FTP traffic from the Internet (file downloads)
- Shared network files & network traffic in general
- Demonstration software
- Pirated software
- Shrink-wrapped, production programs (rare)
- Computer labs
- Electronic bulletin boards (BBS)
- Diskette swapping (using other people's diskettes for carrying data and programs back and forth)

The most likely virus entry points are email, Internet and network connections, floppy disk drives, and modems or other serial or parallel port connections. In today's increasingly interconnected workplace (Internet, intranet, shared drives, removable drives, and email), virus outbreaks now can spread faster and wider than ever before.

Virus Writers

In the typical scenario, it is an individual, working alone, who writes a virus program and then introduces it onto a single computer, network server, or the Internet. Why? Ego, revenge, sabotage, and basic disgruntlement have all been cited as motivations. Recently, do-it-yourself "virus kits" have been popping up on the Internet, and macro scripts are becoming both easier to learn and more powerful, putting the capacity to engineer viruses in the hands of nearly everyone. In other words, no single, likely profile exists by which virus writers can be described or understood.

So whatever the reason one may have for writing a virus, the important thing is to make certain your company is not victimized, that your data you are responsible for is safe, and that precious time is not wasted hunting down (and cleaning up after) viruses.

Hotkey Utility

Topics Covered:

ASUS Hotkey

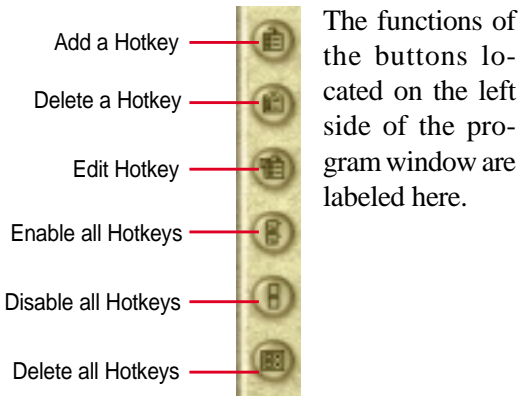
Buttons

Hotkey Actions

Adding a Program to Run

ASUS Hotkey

Buttons



The functions of the buttons located on the left side of the program window are labeled here.

Delete a Hotkey

Highlight a Hotkey and click this button to delete it from the current category.



If you did not select a Hotkey, a message will show:



Delete all Hotkeys

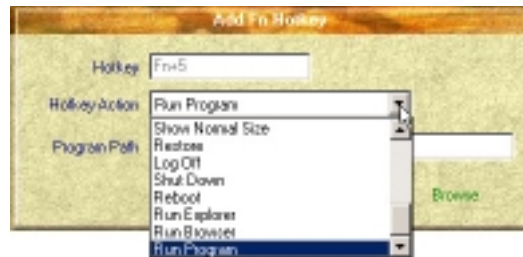
Deletes all Hotkeys in the current category. This confirmation will be shown:



Add a Hotkey

You can assign three Hotkeys to the two preset by the utility for a maximum of five. If you don't use the two preset, you can delete them for your own applications.

When you choose to add a hotkey, you can specify a key by pressing that key or key combination in the Hotkey box (the <Fn> key cannot be entered and will be automatically added to the "Notebook Fn Hotkey" category). The available Hotkey actions for assignment are shown in the "Hotkey Action" pull down.



If you already have five hotkey settings, you will get this message.



Edit a Hotkey

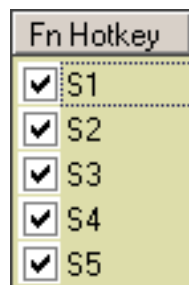
Highlight a Hotkey and click this button to change its Hotkey or action.

You can enter any information just like adding a Hotkey.



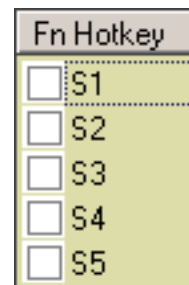
Enable all Hotkeys

Enables all Hotkeys by placing check marks in front of the Hotkeys in the current category.






Disable all Hotkeys

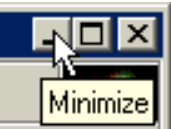
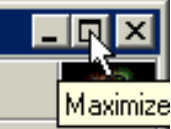

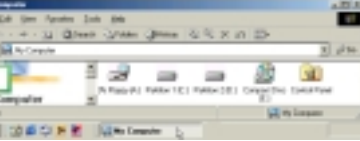

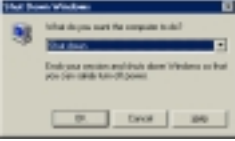
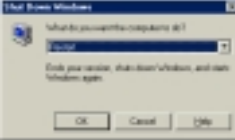
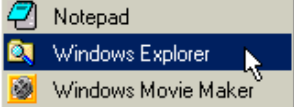
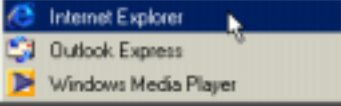
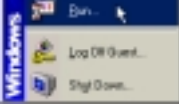
Disables all Hotkeys by removing check marks from the front of the Hotkeys in the current category.



Hotkey Actions

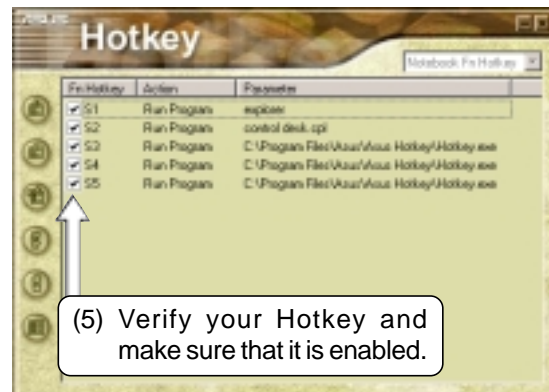
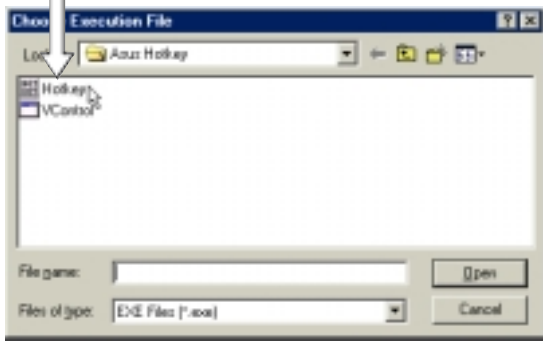
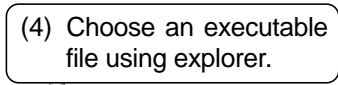
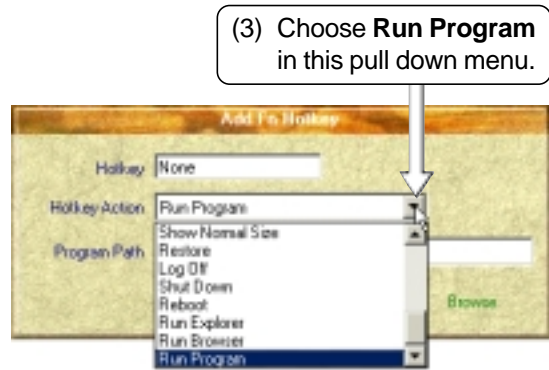
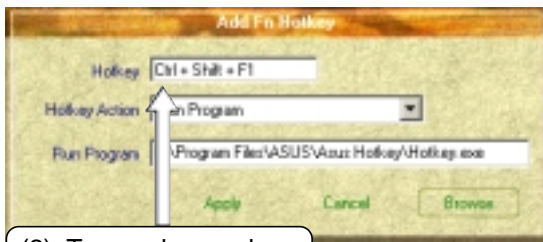
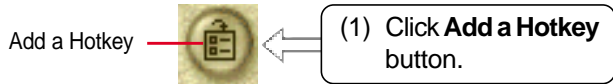
Actions	Descriptions	Examples (of action)
None:	Performs no action	--
Move Window To Left:	Moves the active window left between 1-50 steps	
Move Window To Up:	Moves the active window up between 1-50 steps	
Move Window To Right:	Moves the active window right between 1-50 steps	

Actions	Descriptions	Examples (of action)
Move Window To Below:	Moves the active window down between 1-50 steps	
Extend Window From Left:	Stretches the active window left between 1-50 steps	
Extend Window From Up:	Stretches the active window up between 1-50 steps	
Extend Window From Right:	Stretches the active window right between 1-50 steps	
Extend Window From Below:	Stretches the active window down between 1-50 steps	
Shrink Window from Left:	Shrinks the active window from the left between 1-50 steps	
Shrink Window from Up:	Shrinks the active window from the top between 1-50 steps	
Shrink Window From Right:	Shrinks the active window from the right between 1-50 steps	
Shrink Window From Below:	Shrinks the active window from the bottom between 1-50 steps	

Actions	Descriptions	Examples (of action)
Minimize Window:	Minimizes the active window	
Maximize Window:	Maximizes the active window	
Show Normal Size:	Shows the active window in normal size (user adjustable)	
Restore:	Restores a minimized window to its previous size.	
Log Off:	Logs the current user OFF from the current Windows session and any connected networks.	
Shut Down:	Exits from Windows and turns OFF the Notebook PC.	
Reboot:	Restarts the Notebook PC	
Run Explorer:	Runs Windows Explorer	
Run Browser:	Runs the Internet Browser	
Run Program:	Runs a user defined program	

Adding a Program to Run

To add a Hotkey to run a program follow the steps below.



Windows Flash Utility (WINFLASH)

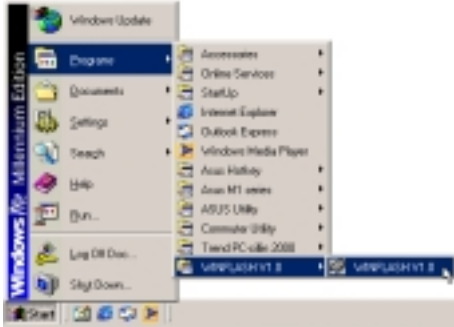
Topics Covered:

Updating Your BIOS

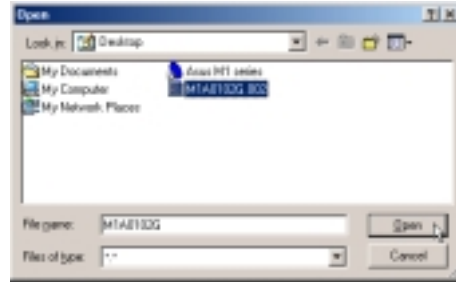
Resetting Your BIOS

Updating Your BIOS

If you ever hear “resetting your BIOS”, it entails pressing [F2] on bootup to enter BIOS setup and then selecting **Load Setup Defaults** on the “Exit” menu.



To run **WINFLASH**, access the program shortcut through the **Start** button.



When you enter WINFLASH, you will be immediately asked for the BIOS image file. Browse to the file and click **Open**.



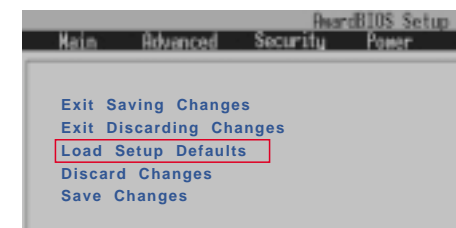
Compare the BIOS ROM (your current BIOS) to the BIOS image (the new BIOS). If this is correct, click **Flash** to write the new BIOS to your Notebook PC. If necessary select “Reserve DMI data in Flash ROM” if there are information added to the DMI. If you don’t know, leave it unselected.



Click **Exit** when done. You need to restart your Notebook PC and “reset your BIOS”. See instructions below.

Resetting Your BIOS

If you ever hear “reset your BIOS”, it entails pressing [F2] on bootup to enter BIOS setup and selecting **Load Setup Defaults**, and then **Exit Saving Changes** on the “Exit” menu.



WINFLASH

ASUS PC Probe

Topics Covered:

Starting ASUS PC Probe

Using PC Probe Monitoring

ASUS PC Probe Task Bar Icon

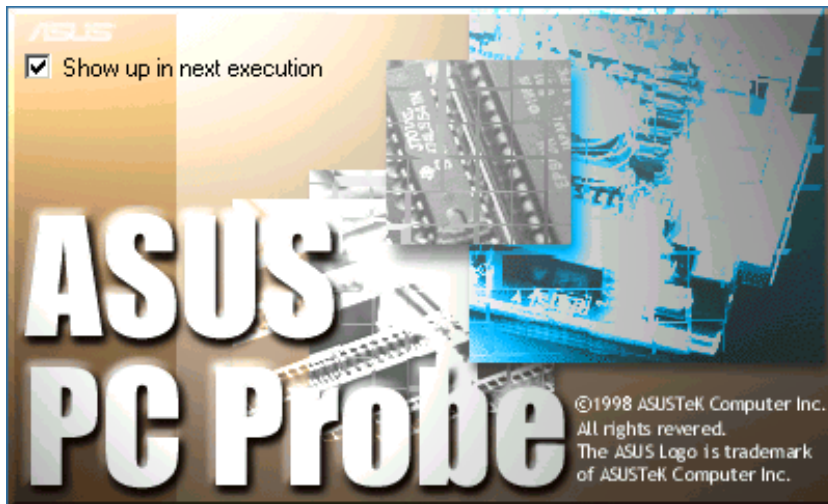
Welcome to ASUS PC Probe


ASUS PC Probe is a convenient utility to continuously monitor your computer system's vital components, such as fan rotations, voltages, and temperatures. It also has a utility that lets you review useful information about your computer, such as hard disk space, memory usage, and CPU type, CPU speed, and internal/external frequencies through the DMI Explorer.

Starting ASUS PC Probe

If the ASUS Probe icon (magnifying glass) is not shown on the taskbar (see below), click the Windows **Start** button, point to **Programs**, and then **ASUS Utility**, and then click **Probe VX.XX**.

When ASUS PC Probe starts, a splash screen appears allowing you to select whether to show the screen again when you open PC Probe or not. To bypass this startup screen, clear the **Show up in next execution** check box.



The PC Probe icon  will appear on the taskbar's system tray indicating that ASUS PC Probe is running. Clicking the icon once will allow open the PC Probe interface.

Using ASUS PC Probe Monitoring

Monitoring



Monitor Summary

Shows a summary of the items being monitored.



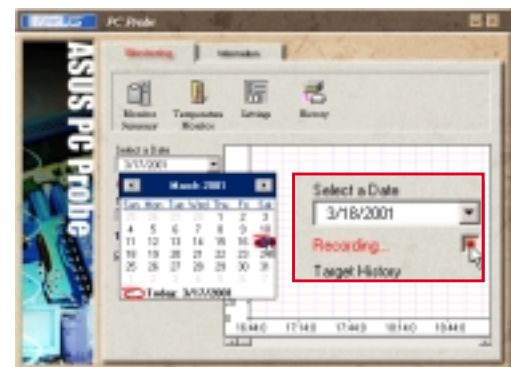
Temperature Monitor

Shows the PC's temperature.



Settings

Lets you set threshold levels and polling intervals or refresh times of the PC's temperature, fan rotation, and voltages.



History

Lets you record the temperature monitoring activity by date, time, and target history. Click the record button and select a date. To view a previous recording, simply choose that date.



Information

Hard Drives

Shows the used and free space of the PC's hard disk drives and the file allocation table or file system used.

More Hard Drives

Information on other hard drives can be accessed by clicking on the relevant drive letter.



Memory

Shows the PC's memory load, memory usage, and paging file usage.



Device Summary

Shows a summary of devices in your PC.

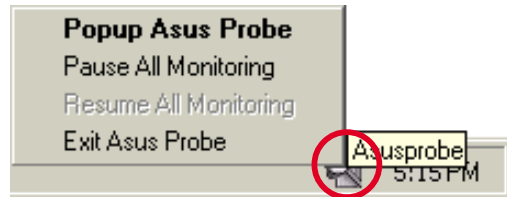


DMI Explorer

Shows information pertinent to the PC, such as CPU type, CPU speed, and internal/external frequencies, and memory size.

ASUS PC Probe Task Bar Icon

Right clicking the PC Probe icon will bring up a menu to open or exit ASUS PC Probe and pause or resume all system monitoring.



When the ASUS PC Probe senses a problem with your PC, portions of the ASUS PC Probe icon changes to red and the PC speaker makes clicking noises.



NOTE: PC Probe will constantly use resources to check the system status while Windows is operating. It is suggested to exit PC Probe while using high demanding applications.

APPENDIX

Topics Covered:

Communication Regulations

Modem Declaration Of Conformity

Modem Communication Regulations

FCC Regulations

The following statements are provided in accordance with the Federal Communications Commission (FCC) regulations. Please read these statements carefully before installing your modem.

FCC Part 68 Requirements

This equipment complies with Part 68 of the FCC Rules. On the bottom of this equipment is a label that contains, among other information, the FCC Registration Number and Ringer Equivalence Number (REN) for this equipment. If requested, this information must be given to the telephone company.

The REN is used to determine the maximum number of devices connected to your telephone line that will ring in response to an incoming call. In most, but not all, areas, the total REN of devices connected to a line should not exceed five (5.0). To find out the total permitted in your area, contact your local telephone company.

If your telephone equipment causes harm to the telephone network, the telephone company can discontinue your service temporarily. If possible, the company will notify you in advance. But if advance notice isn't practical, you will be notified as soon as possible. You will be informed of your right to file a complaint with the FCC.

Your telephone company can make changes in its facilities, equipment, operations, or procedures that could affect the operation of your equipment. If so, you will be notified in advance so you can make the changes needed to maintain uninterrupted service.

If you experience trouble with this equipment, please contact the manufacturer at the address given in this manual. The telephone company may ask that you disconnect this equipment from the network until the problem has been corrected or until you are sure that the equipment is not malfunctioning.

This equipment may not be used on public coin service provided by the telephone company. Connection to party lines is subject to state tariffs.

Modem Declaration Of Conformity

This equipment has been tested and found to comply with the limits for a Class B digital device, pursuant to Part 15 of the FCC Rules. These limits are designed to provide reasonable protection against harmful interference in a residential installation. This equipment generates, uses and can radiate radio frequency energy and, if not installed and used in accordance with the instructions, may cause harmful interference to radio communications. However, there is no guarantee that interference will not occur in a particular installation. If this equipment does cause harmful interference to radio and television reception, the user is encouraged to try to correct the interference by one or more of the following measures:

- Reorient the receiving antenna.
- Increase the separation between the equipment and receiver.
- Connect the equipment into an outlet on a circuit different from that to which the receiver is connected.
- Consult the dealer or an experienced radio/TV technician for help.

WARNING! CHANGES OR MODIFICATIONS NOT EXPRESSLY APPROVED BY THE PARTY RESPONSIBLE FOR COMPLIANCE COULD VOID THE USER'S AUTHORITY TO OPERATE THE EQUIPMENT

Canadian Department Of Communications (CDOC):

Notice: The Canadian Department of Communications label identifies certified equipment. This certification means the equipment meets certain telecommunications network requirements. The Department does not guarantee the equipment will operate to the user's satisfaction.

Before installing this equipment users should ensure that connection to the line is allowed by the local telecommunications company. The equipment must also be installed using an acceptable method of connection. In some cases, the company's inside wiring associated with a single line individual service may be extended by means of a telephone extension cord. Compliance with the above conditions may not prevent degradation of service in certain situations.

Repairs to certified equipment should be made by an authorized Canadian maintenance facility designated by the supplier. Any repairs or alterations made by the user to this equipment, or equipment malfunctions, may give the telecommunications company cause to request the user to disconnect the equipment.

Users should ensure for their own protection that the electrical ground connections of the power utility, telephone lines, and internal metallic water pipe system, if present, are connected together. This precaution may be particularly important in rural areas.

WARNING! Users should not attempt to make such connections themselves, but should contact the appropriate electric inspection authority, or electrician, as appropriate.

