

WIN98 SUPPLEMENT TO THE DRIVER & UTILITY INSTALLATION GUIDE

Notebook PC P6300 Series
Unveils new heights in personal portable computing

Contents

Microsoft Windows 98 Environment	2
To Install the Display Driver	2
To Install the Audio Driver	4
To Install the ASUS PC Probe Utility (optional)	6
To Install the PC-cillin anti-virus software (optional)	7
To Install the Synaptics TouchPad Pointing Device Driver (optional)	7

MICROSOFT WINDOWS 98 ENVIRONMENT

To install Windows 98, please refer to your Microsoft Windows 98 Installation Guide.

NOTE: After you have finished installing Win98, it is recommended that you use the Windows 98 CD-ROM driver instead of the DOS real-mode CD-ROM driver. A DOS driver has poorer performance, wastes memory, and may also cause problems.

To remove the DOS real-mode CD-ROM driver

1. Remove the line, **Device=<cdrom>.SYS...**, in the C:\CONFIG.SYS file.
(The driver filename depends on which driver you have installed.)
2. Remove the line, **MSCDEX...**, in the C:\AUTOEXEC.BAT file.

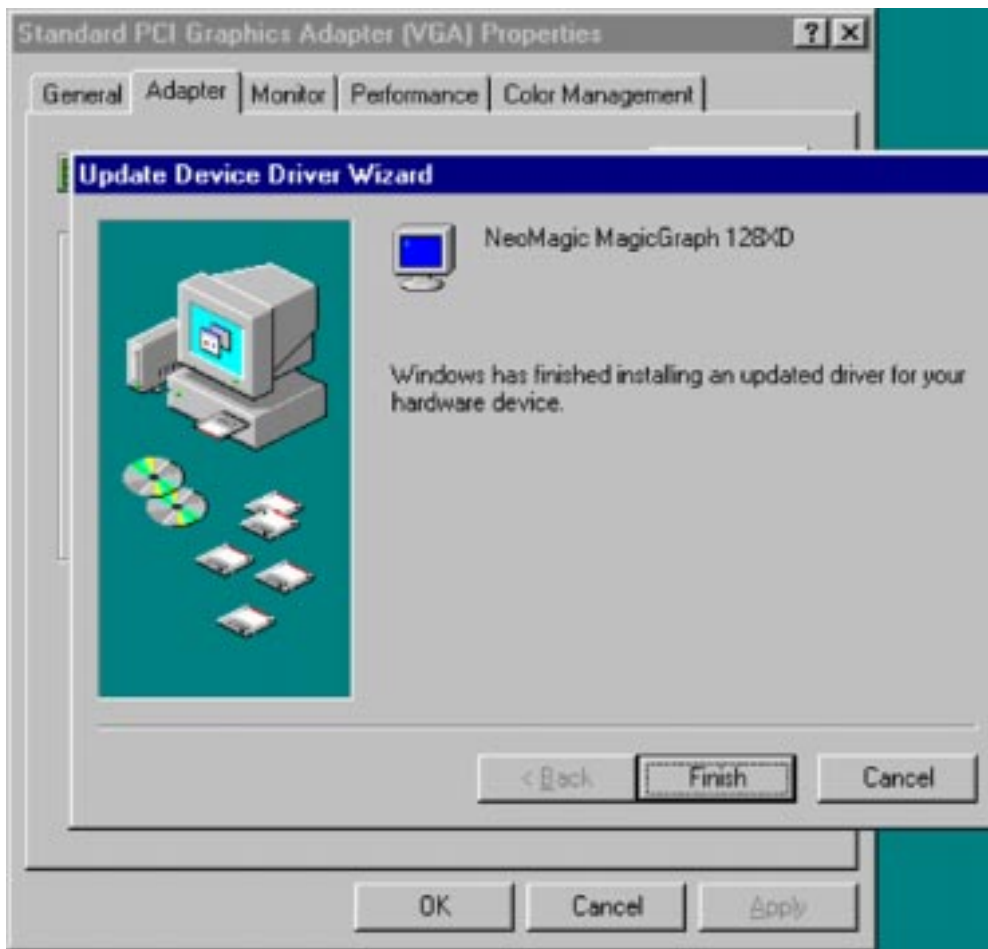
If you are installing software without Windows (e.g. a newly formatted hard drive, you will need the DOS driver to access the CD-ROM.

This manual assumes that your CD-ROM drive is assigned to **D:**.

To Install the Display Driver

1. Insert the Notebook P6300 Driver & Utility CD-ROM.
2. Double-click the **My Computer** icon, double-click the **Control Panel** icon, and then double-click the **Display** icon (or right-click on the desktop and choose **Properties**).
3. Click the **Settings** tab.
4. Click **Advanced**.
5. Click the **Adapter** tab, and then click **Change**.
6. Click **Next** twice.
7. Click to select the **Specify a location** check box, choose the path **D:\VGA\WIN98**, and then click **Next** twice.
8. Click **Finish**, and then click **Yes** to restart your computer.
9. From the **Settings** tab, select **High Color (16 bit)** for Colors and **1024 by 768 pixels** for Screen area.

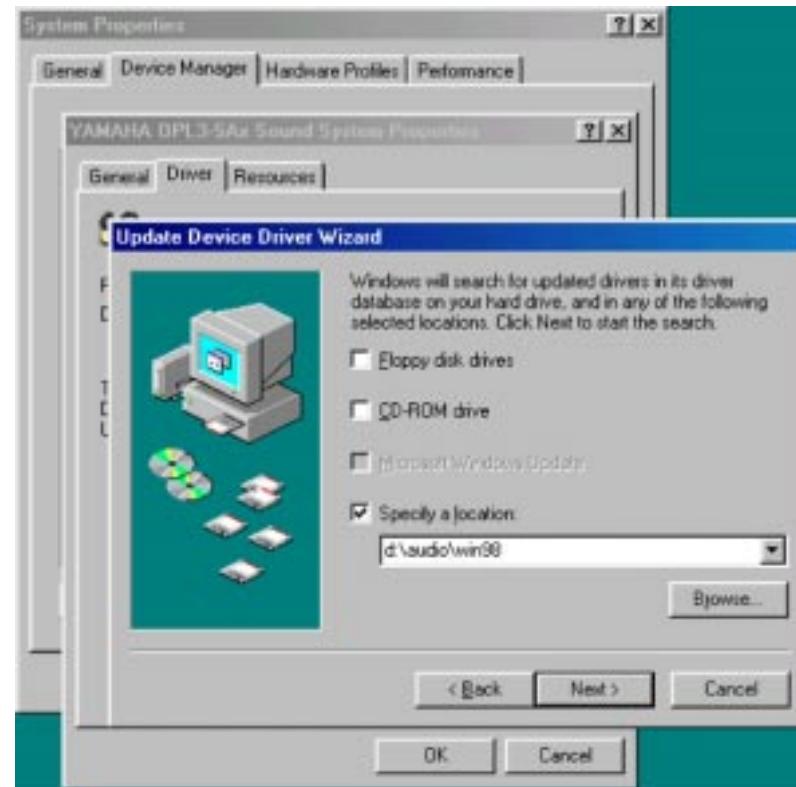
10. Click **Advanced**, and then click the **Monitor** tab.
11. Click **Change**, and then select **Laptop Display Panel (1024x768)**.
12. Click **OK**. “Monitor is Energy Star Compliant” is checked automatically.
13. Click **Close**.
14. Make sure that you have selected **High Color (16 bit)** and **1024 by 768 pixels**, and then click **OK** three times.
15. Click **Yes**.



Windows 98 Display Driver Installation Screen

To Install the Audio Driver

1. Insert the Notebook P6300 Driver & Utility CD-ROM.
2. Double-click the **My Computer** icon, double-click the **Control Panel** icon, and then double-click the **System** icon (or right-click on the **My Computer** icon and choose **Properties**).
3. Click the **Device Manager** tab.
4. Under **Sound, Video and Game controllers**, select **Gameport Joystick**.
5. Click **Remove**, and then click **OK**.
6. Under **Sound, Video and Game controllers**, select **YAMAHA OPL3-SAx WDM Driver**, and then click **Properties**.
7. Click the **Driver** tab, and then click **Updated Driver**.
8. Click **Next** twice
9. Click to select the **Specify a location** check box, choose the path **D:\AUDIO\WIN98**, and then click **Next** twice.
10. Click **Finish**.



Windows 98 Audio Driver Installation Screen

Note : The YAMAHA YSTATION32 software, which consists of CD, MIDI, WAVE and MIX players, is included on your P6300 CD-ROM and supports the following languages: English, French, German, Japanese, Italian, Spanish, Danish, Dutch, Finnish, Norwegian, Swedish, Traditional Chinese, Simplified Chinese, and Brazilian Portuguese.

To install the player on your P6300, run D:\AUDIO\APPL\SETUP. The setup program will install a DOS-based sound card configuration into your AUTOEXEC.BAT and DOSSTART.BAT files. If you do not want to see the configuration screen each time you restart the computer in MS-DOS mode, do NOT let setup modify your AUTOEXEC.BAT and DOSSTART.BAT file during installation.

To Install the ASUS PC Probe Utility (optional)

The ASUS PC Probe is a convenient utility to monitor the computer system's vital information, such as fan rotation status, voltages, and temperatures. Please refer to the complete user's manual in Adobe Acrobat PDF format located in **C:\PROGRAM FILES\PROBE** after you have installed ASUS PC Probe.

Installation Procedure

1. Insert the Notebook P6300 Driver & Utility CD-ROM. The ASUS P6300 Series Notebook PC autorun menu will appear. If it does not, run **D:\SETUP.EXE**.
2. Click **ASUS PC Probe Setup**.
3. Click **OK**.
4. Click the **ASUS** icon to install ASUS PC Probe.
5. Click **Continue**, and then click **OK**.



To Install the PC-cillin anti-virus software (optional)

1. Insert the Notebook P6300 Driver & Utility CD-ROM. The ASUS P6300 Series Notebook PC autorun menu will appear. If it does not, run **D:\SETUP.EXE**.
2. Click **PC-cillin**.
3. Click **Next** on the Welcome screen.
4. Type in your name and organization, and then click **Next**.
5. Click **Next** twice.
6. Click **Start** to create a Bootable Emergency Clean Disk. Otherwise, click **Skip**.
7. Click **Finish**.

To Install the Synaptics TouchPad Pointing Device Driver (optional)

The system BIOS fully supports keyboard and PS/2 mouse devices that are built-in or connected to the Notebook PC externally. The Notebook PC's integrated TouchPad pointing device is fully compatible with the two-button PS/2 mouse. However, a device driver may still be required for working with some application software.

Installation Procedure

1. Insert the Notebook P6300 Driver & Utility CD-ROM. The ASUS P6300 Series Notebook PC autorun menu will appear. If it does not, run **D:\SETUP.EXE**.
2. Click **TouchPad**.
3. Click **Next** on the Welcome screen.
4. Click **Next** to choose the destination location.
5. Click **Next** to start copying files.
6. Click **Finish**.

P/N 15-060010000