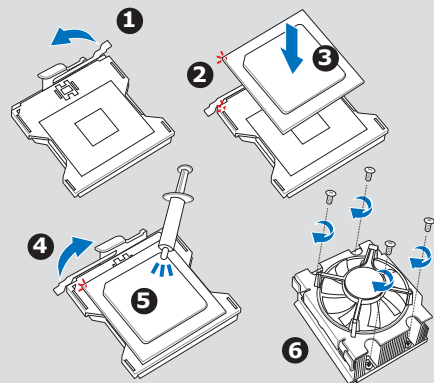


A CPU installation

1. Lift the socket lever and push it to the other side.
2. Position the CPU above the socket. Match the marked corner of the CPU and the socket
3. Insert the CPU.
4. Push down the socket lever to secure the CPU.
5. Apply thermal grease on top of the CPU.
6. Install the CPU fan and heatsink.



CAUTION

The CPU fits only in one correct orientation. DO NOT force the CPU into the socket to prevent bending the pins and damaging the CPU!

注意

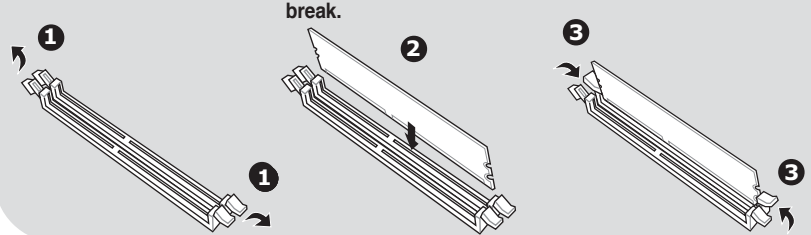
處理器僅能以一個方向正確安裝，請勿強制將處理器裝入插槽，以免弄彎處理器針腳和處理器！

注意

處理器僅能以一個方向正確安裝，請勿強制將處理器裝入插槽，以免弄彎處理器針腳和處理器！

B Memory installation

1. Press the retaining clips outward.
2. Align a DIMM on the socket by matching the DIMM notch on the socket break.
3. Insert the DIMM into the socket until the retaining clips snap back in place.



CAUTION

A DDR DIMM is keyed with a notch to fit in only one direction. DO NOT force a DIMM into a socket to avoid damaging the DIMM.

注意

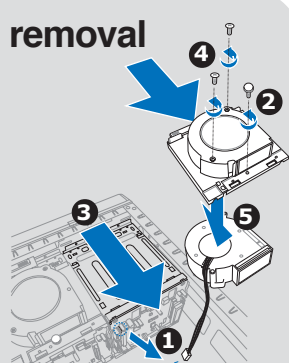
記憶體模組金手指部份均有凹槽設計，因此只能以一個固定方向安裝到記憶體模組插槽中，請勿強制插入以免損及記憶體模組。

注意

內存條的金手指部份均有凹槽設計，因此只能以一個固定方向安裝到內存條插槽中，請勿強制插入以免損及內存條。

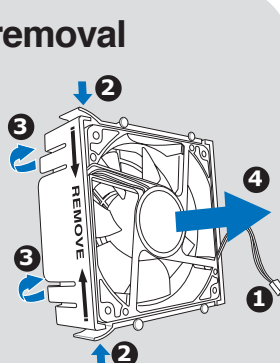
C HDD blower removal

1. Disconnect the fan cable.
2. Loosen the thumb screw.
3. Grip the blower case, then slide it out of the chassis.
4. Remove the two screws on the blower case.
5. Remove the blower.
6. Refer to the User Guide for details.



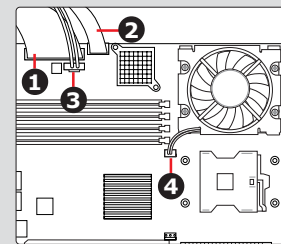
D Chassis fan removal

1. Disconnect the fan cable from the motherboard.
2. Press the fan tabs, then pull the fan out of the chassis.
3. Pull up the lock hooks of the chassis fan case.
4. Detach the chassis fan from the case.
5. Refer to the User Guide for details.

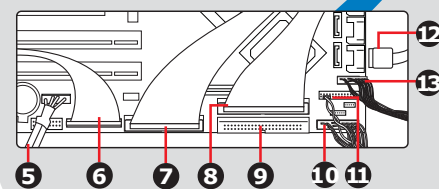


E Cable connections

▼ Motherboard

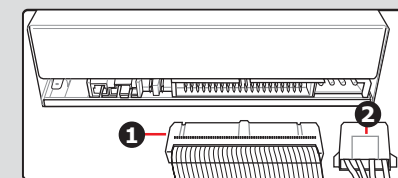


1. ATX power cable (24-pin power plug from the power supply unit)
2. Power cable (8-pin ATX 12V power plug from the power supply unit)
3. Power supply SMBus cable
4. CPU fan cable
5. SMBus cable to the backplane
6. Parallel port module cable
7. Floppy disk drive signal cable (to FDD signal connector)
8. Optical disk drive signal cable (to ODD signal connector)
9. Primary IDE connector
10. Panel cable (to various chassis front panel connectors)
11. Chassis intrusion cable
12. SATA signal cables (7-pin cables connected to the SATA connectors on the SATA backplane. Available on AA4 models only.)
13. USB 2.0 cables (to USB 2.0 connector on the front I/O board)



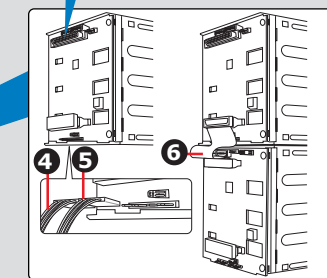
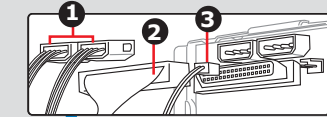
▼ Optical drive

1. Signal cable (to the SEC_IDE connector on motherboard)
2. Power cable (4-pin plug from the power supply unit)



▼ Upper SCSI backplane (On AS4/AS8 models)

1. Power cables (two 4-pin power plugs from the power supply unit)
2. 68-pin SCSI signal cable (from the SCSI card connector)
3. HDD fan cable
4. SMBus cable (from the SMBus connector on the motherboard)
5. SMBus cable (from the SMBus cable of the lower SCSI backplane; for AS8 models only)



▲ Lower SCSI backplane (On AS8 models with cascade configuration)

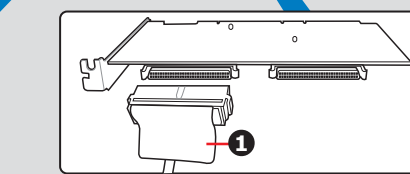
- 1 ~ 3. Same as upper SCSI backplane cables
4. SMBus cable (from the SMBus cable of the upper backplane)
6. 68-pin SCSI signal cable to the SCSI connector of the upper backplane



▲ SATA backplane (On AA4 models)

1. Power cables (two 4-pin power plugs from the power supply unit)
2. SATA signal cables (from the SATA connectors on the motherboard)
3. HDD fan cable

NOTE: For SMBus cable, refer to item #4 of the section "Upper SCSI backplane."



▲ SCSI card (On AS4/AS8 models)

1. SCSI cable (to the top 68-pin SCSI connector on the first SCSI backplane)