

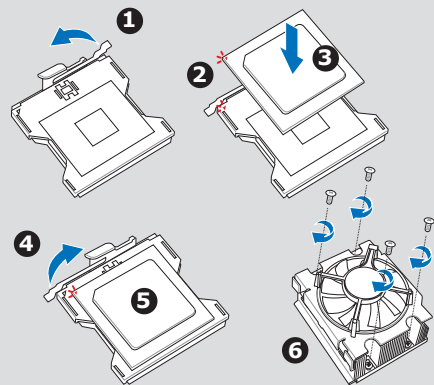
ASUS AP1720-E2 Server System

Visit us at:
www.asus.com/products/server

E1856

A CPU installation

1. Lift the socket lever and push it to the other side.
2. Position the CPU above the socket. Match the marked corner of the CPU and the socket.
3. Insert the CPU.
4. Lift the socket lever and push it to the other side to secure the CPU.
5. Apply thermal grease on top of the CPU.
6. Install the CPU fan and heatsink.



CAUTION

The CPU fits only in one correct orientation. DO NOT force the CPU into the socket to prevent bending the pins and damaging the CPU!

注意

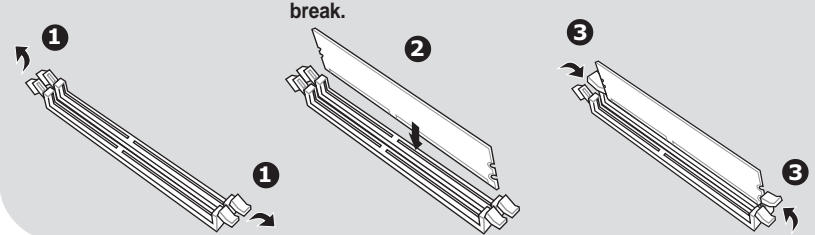
處理器僅能以一個方向正確安裝，請勿強制將處理器裝入插槽，以免弄彎處理器針腳和處理器！

注意

處理器僅能以一個方向正確安裝，請勿強制將處理器裝入插槽，以免弄彎處理器針腳和處理器！

B Memory installation

1. Press the retaining clips outward.
2. Align a DIMM on the socket by matching the DIMM notch on the socket break.
3. Insert the DIMM into the socket until the retaining clips snap back in place.



CAUTION

A DDR DIMM is keyed with a notch to fit in only one direction. DO NOT force a DIMM into a socket to avoid damaging the DIMM.

注意

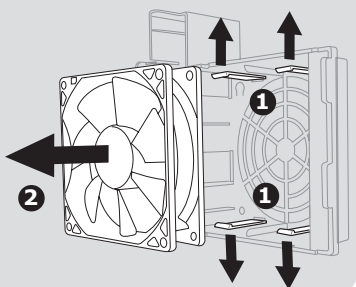
記憶體模組金手指部份均有凹槽設計，因此只能以一個固定方向安裝到記憶體模組插槽中，請勿強制插入以免損及記憶體模組。

注意

內存條的金手指部份均有凹槽設計，因此只能以一個固定方向安裝到內存條插槽中，請勿強制插入以免損及內存條。

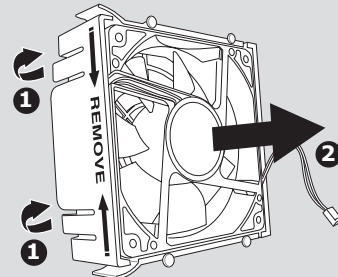
C HDD fan removal

1. Press the fan case hooks outward.
2. Remove the HDD fan from the case.
3. Refer to the system user guide for details.



D Chassis fan removal

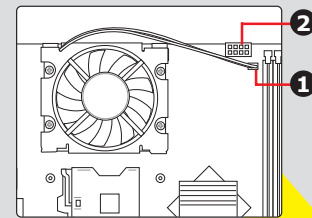
1. Pull the lock hooks of the chassis fan case upward.
2. Remove the chassis fan from the case.
3. Refer to the User Guide for details.



E Cable connections

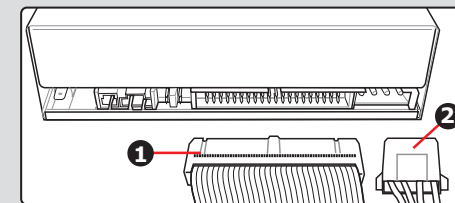
▼ Motherboard

1. CPU fan cable
2. Power cable (8-pin ATX 12V power plug from the power supply unit)

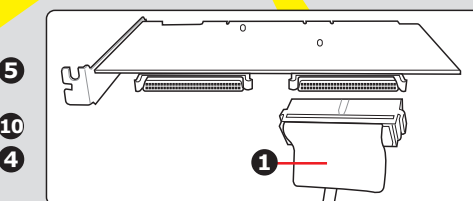
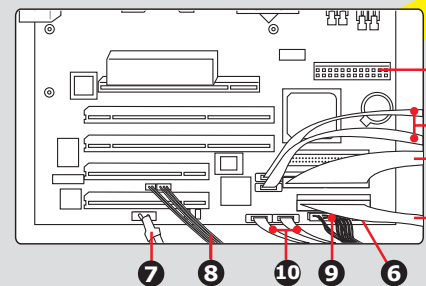


▼ Optical drive

1. Signal cable (to the SEC_IDE connector on motherboard)
2. Power cable (4-pin plug from the power supply unit)



3. Floppy disk drive signal cable (to FDD signal connector)
4. Optical disk drive signal cable (to ODD signal connector)
5. ATX power cable (24-pin power plug from the power supply unit)
6. Chassis fan cable (hidden)
7. IEEE 1394 cable (to IEEE 1394 connector on the front I/O board)
8. SMBus cable (to SMBus connector on backplane, if any)
9. Panel cable (to various chassis front panel connectors)
10. SATA signal cables (7-pin cables connected to the SATA connectors on the SATA backplane. Available on AA4 models only.)

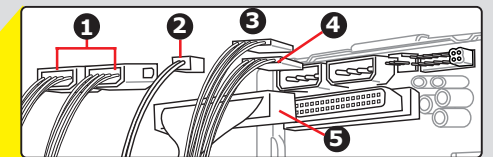


▲ SCSI card (On AS4/AS8 models)

1. SCSI cable (to the top 68-pin SCSI connector on the first SCSI backplane)

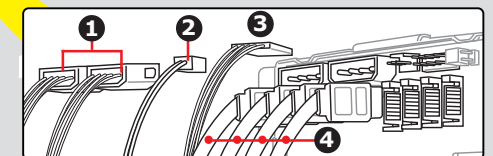
▼ Upper SCSI backplane (On AS4/AS8 models)

1. Power cables (two 4-pin power plugs from the power supply unit)
2. HDD fan cable
3. SMBus cable (from the SMBus connector on the motherboard)
4. SMBus cable
 - AS4 models: Connects the SMBus connector on the power supply
 - AS8 models: Connects the SMBus connector on lower SCSI backplane)
5. SCSI signal cable (from the SCSI card connector)



▲ Lower SCSI backplane (On AS8 models with cascade configuration)

1. Power cables (two 4-pin power plugs from the power supply unit)
2. HDD fan cable
3. SMBus cable (from the SMBus connector on the upper SCSI backplane)
4. SMBus cable (from the SMBus connector on the power supply)
5. SCSI signal cable (from the second SCSI connector on the upper SCSI backplane)



▲ SATA backplane (On AA4 models)

1. Power cables (two 4-pin power plugs from the power supply unit)
2. HDD fan cable
3. SMBus cable (from the SMBus connector on the motherboard)
4. SATA signal cables (from the SATA connectors on the motherboard)