

**ASUS<sup>®</sup>**

# **ASMB3-SOL**

*Server Management Board*



E2750

First Edition V1  
December 2006

**Copyright © 2006 ASUSTeK COMPUTER INC. All Rights Reserved.**

No part of this manual, including the products and software described in it, may be reproduced, transmitted, transcribed, stored in a retrieval system, or translated into any language in any form or by any means, except documentation kept by the purchaser for backup purposes, without the express written permission of ASUSTeK COMPUTER INC. ("ASUS").

Product warranty or service will not be extended if: (1) the product is repaired, modified or altered, unless such repair, modification or alteration is authorized in writing by ASUS; or (2) the serial number of the product is defaced or missing.

ASUS PROVIDES THIS MANUAL "AS IS" WITHOUT WARRANTY OF ANY KIND, EITHER EXPRESS OR IMPLIED, INCLUDING BUT NOT LIMITED TO THE IMPLIED WARRANTIES OR CONDITIONS OF MERCHANTABILITY OR FITNESS FOR A PARTICULAR PURPOSE. IN NO EVENT SHALL ASUS, ITS DIRECTORS, OFFICERS, EMPLOYEES OR AGENTS BE LIABLE FOR ANY INDIRECT, SPECIAL, INCIDENTAL, OR CONSEQUENTIAL DAMAGES (INCLUDING DAMAGES FOR LOSS OF PROFITS, LOSS OF BUSINESS, LOSS OF USE OR DATA, INTERRUPTION OF BUSINESS AND THE LIKE), EVEN IF ASUS HAS BEEN ADVISED OF THE POSSIBILITY OF SUCH DAMAGES ARISING FROM ANY DEFECT OR ERROR IN THIS MANUAL OR PRODUCT.

SPECIFICATIONS AND INFORMATION CONTAINED IN THIS MANUAL ARE FURNISHED FOR INFORMATIONAL USE ONLY, AND ARE SUBJECT TO CHANGE AT ANY TIME WITHOUT NOTICE, AND SHOULD NOT BE CONSTRUED AS A COMMITMENT BY ASUS. ASUS ASSUMES NO RESPONSIBILITY OR LIABILITY FOR ANY ERRORS OR INACCURACIES THAT MAY APPEAR IN THIS MANUAL, INCLUDING THE PRODUCTS AND SOFTWARE DESCRIBED IN IT.

Products and corporate names appearing in this manual may or may not be registered trademarks or copyrights of their respective companies, and are used only for identification or explanation and to the owners' benefit, without intent to infringe.

# Contents

Notices.....	v
Safety information .....	vi
About this guide .....	vii
ASMB3-SOL specifications summary.....	ix
<b>Chapter 1: Product introduction</b>	
1.1 Welcome! .....	1-2
1.2 Package contents.....	1-2
1.3 Board layout .....	1-3
1.4 System requirements.....	1-3
1.5 Network and smart phone setup .....	1-4
<b>Chapter 2: Installation</b>	
2.1 Before you proceed .....	2-2
2.2 Hardware installation.....	2-2
2.3 Firmware update .....	2-5
2.3.1 For motherboards with Broadcom® 5721 LAN .....	2-5
2.4 BIOS configuration .....	2-8
2.4.1 AMI BIOS setup .....	2-8
2.5 Running the ASMC utility .....	2-12
2.5.1 Configuring the LAN controller .....	2-13
2.5.2 Using ASWM to update the ASMB3-SOL firmware .....	2-15
2.6 Software installation .....	2-16
2.6.1 Installing the ARC .....	2-16
2.6.2 Launching ARC .....	2-17
<b>Chapter 3: Software support</b>	
3.1 ASUS Remote Console (ARC).....	3-2
3.1.1 ARC sections .....	3-3
3.1.2 Connecting to the remote server.....	3-6
3.1.3 Retrieving sensor information .....	3-8
3.1.4 Displaying FRU information .....	3-10
3.1.5 Displaying system event logs.....	3-11
3.1.6 Using Remote Console .....	3-12

# Contents

3.1.7	Displaying all remote server sensors .....	3-13
3.1.8	Adjusting the monitoring settings .....	3-14
3.1.9	Updating the remote server BIOS file .....	3-16
3.1.10	Controlling the remote server power .....	3-17
3.1.11	Viewing PET information.....	3-18
<b>3.2</b>	<b>ASUS Host Management Controller Setup .....</b>	<b>3-21</b>
3.2.1	Installing and launching the ASUS Host Management Controller Setup utility .....	3-21
3.2.2	Command fields .....	3-22
3.2.3	Initial.....	3-22
3.2.4	View .....	3-22
3.2.5	Set.....	3-25
3.2.6	Monitor .....	3-26
3.2.7	Help.....	3-26
 <b>Appendix: Reference information</b>		
<b>A.1</b>	<b>LAN port for server management .....</b>	<b>A-2</b>
<b>A.2</b>	<b>BMC socket.....</b>	<b>A-3</b>
<b>A.3</b>	<b>Troubleshooting .....</b>	<b>A-4</b>

# Notices

## Federal Communications Commission Statement

This device complies with Part 15 of the FCC Rules. Operation is subject to the following two conditions:

- This device may not cause harmful interference, and
- This device must accept any interference received including interference that may cause undesired operation.

This equipment has been tested and found to comply with the limits for a Class B digital device, pursuant to Part 15 of the FCC Rules. These limits are designed to provide reasonable protection against harmful interference in a residential installation. This equipment generates, uses and can radiate radio frequency energy and, if not installed and used in accordance with manufacturer's instructions, may cause harmful interference to radio communications. However, there is no guarantee that interference will not occur in a particular installation. If this equipment does cause harmful interference to radio or television reception, which can be determined by turning the equipment off and on, the user is encouraged to try to correct the interference by one or more of the following measures:

- Reorient or relocate the receiving antenna.
- Increase the separation between the equipment and receiver.
- Connect the equipment to an outlet on a circuit different from that to which the receiver is connected.
- Consult the dealer or an experienced radio/TV technician for help.



---

The use of shielded cables for connection of the monitor to the graphics card is required to assure compliance with FCC regulations. Changes or modifications to this unit not expressly approved by the party responsible for compliance could void the user's authority to operate this equipment.

---

## Canadian Department of Communications Statement

This digital apparatus does not exceed the Class B limits for radio noise emissions from digital apparatus set out in the Radio Interference Regulations of the Canadian Department of Communications.

**This class B digital apparatus complies with Canadian ICES-003.**

# Safety information

## Electrical safety

- To prevent electrical shock hazard, disconnect the power cable from the electrical outlet before relocating the server.
- When adding or removing devices to or from the server, ensure that the power cables for the devices are unplugged before the signal cables are connected. If possible, disconnect all power cables from the existing server before you add a device.
- Before connecting or removing signal cables from the server, ensure that all power cables are unplugged.
- Seek professional assistance before using an adapter or extension cord. These devices could interrupt the grounding circuit.
- Make sure that your power supply is set to the correct voltage in your area. If you are not sure about the voltage of the electrical outlet you are using, contact your local power company.
- If the power supply is broken, do not try to fix it by yourself. Contact a qualified service technician or your retailer.

## Operation safety

- Before installing any component to the server, carefully read all the manuals that came with the package.
- Before using the product, make sure all cables are correctly connected and the power cables are not damaged. If you detect any damage, contact your dealer immediately.
- To avoid short circuits, keep paper clips, screws, and staples away from connectors, slots, sockets and circuitry.
- Avoid dust, humidity, and temperature extremes. Do not place the product in any area where it may become wet.
- Place the product on a stable surface.
- If you encounter technical problems with the product, contact a qualified service technician or your retailer.

# About this guide

This user guide contains the information you need when installing and configuring the server management board.

## How this guide is organized

This guide contains the following parts:

- **Chapter 1: Product introduction**  
This chapter describes the server management board features and the new technologies it supports.
- **Chapter 2: Installation**  
This chapter provides instructions on how to install the board to the server system and install the utilities that the board supports.
- **Chapter 3: Software support**  
This chapter tells you how to use the software applications that the server management board supports.
- **Appendix: Troubleshooting**  
The Appendix shows the location of the LAN port for server management and BMC socket on several motherboards. This section also presents common problems that you may encounter when installing or using the server management board.

## Where to find more information

Refer to the following sources for additional information and for product and software updates.

1. **ASUS websites**  
The ASUS website provides updated information on ASUS hardware and software products. Refer to the ASUS contact information.
2. **Optional documentation**  
Your product package may include optional documentation, such as warranty flyers, that may have been added by your dealer. These documents are not part of the standard package.

## Conventions used in this guide

To make sure that you perform certain tasks properly, take note of the following symbols used throughout this manual.



**DANGER/WARNING:** Information to prevent injury to yourself when trying to complete a task.



**CAUTION:** Information to prevent damage to the components when trying to complete a task.



**IMPORTANT:** Instructions that you **MUST** follow to complete a task.



**NOTE:** Tips and additional information to help you complete a task.

## Typography

### **Bold text**

Indicates a menu or an item to select.

### *Italics*

Used to emphasize a word or a phrase.

### <Key>

Keys enclosed in the less-than and greater-than sign means that you must press the enclosed key.

Example: <Enter> means that you must press the Enter or Return key.

### <Key1+Key2+Key3>

If you must press two or more keys simultaneously, the key names are linked with a plus sign (+).

Example: <Ctrl+Alt+D>

### **Command**

Means that you must type the command exactly as shown, then supply the required item or value enclosed in brackets.

Example: At the DOS prompt, type the command line:  
**format a:**



# ASMB3-SOL specifications summary

<b>IPMI features</b>	IPMI 2.0-compliant and supports: <ul style="list-style-type: none"><li>- Auto monitoring sensor and event logging</li><li>- IPMI Host I/O interface</li><li>- Receiving and logging of event messages</li><li>- IPMB/I2C system interface</li><li>- System Watchdog Timer (ASR)</li></ul>
<b>CPU</b>	16-bit H8S/2000 core 33 MHz
<b>Chipset</b>	Renesas H8S/2168
<b>Internal RAM</b>	40 KB
<b>Internal ROM</b>	256 KB
<b>Interrupt</b>	I2C, Timer, UART, LPC
<b>Timers</b>	16-bit system timer Watchdog timer
<b>System interface</b>	Low Pin Count Supports Keyboard Controller Style (KCS)
<b>Serial/Modem interface</b>	Basic Mode
<b>LAN interface</b>	IPMI 2.0 Shared LAN
<b>LED</b>	BMC heartbeat
<b>Bus</b>	Two I2C bus One IPMB bus Two UART bus
<b>Features</b>	Remote power on/off Remote BIOS update Short Message Service (SMS) Remote Console Redirection (text mode) Serial-Over-LAN (SOL) Remote reboot Upgradeable firmware Platform Event Trap (PET)
<b>Software support</b>	ASUS Remote Console (ARC) ASUS Host Management Controller Utility (DOS-based)

Specifications are subject to change without notice.



This chapter describes the server management board features and the new technologies it supports.

# 1 Product introduction

## 1.1 Welcome!

Thank you for buying an ASUS® ASMB3-SOL server management board!

The ASUS ASMB3-SOL is an Intelligent Platform Management Interface (IPMI) 2.0-compliant board that allows you to monitor, control, and manage a remote server from the local or central server in your local area network (LAN).

The ASMB3-SOL comes with the proprietary ASUS Remote Console (ARC) application that offers round-the-clock remote server monitoring through the component sensors. With ARC, you can monitor the remote server CPU(s) temperature(s), system temperature, fan rotations, and power supply voltages. The ASMB3-SOL records each remote server system event for accurate and efficient troubleshooting.

ARC allows you to update the remote server system BIOS file when it gets outdated or corrupted. It also lets you move through the BIOS file menus using the Remote Console Redirection feature. To keep you always informed of the remote server system status, ARC is also capable of sending Short Message Service (SMS) or text message to your mobile or PDA phone.

The ASMB3-SOL comes with a power management feature that allows you to power on/off or reset the remote server giving you full control during power-critical situations. The server management board also comes with a Field Replaceable Unit (FRU) information feature that gathers information on replaceable system components or modules such as the motherboard or backplane model name, serial number, manufacturer, etc. You can use the FRU information when reporting and/or replacing server system components.

Before you start installing the server management board check the items in your package with the list below.

## 1.2 Package contents

Check your server management board package for the following items.

- ASUS ASMB3-SOL board
- Support CD
- User guide



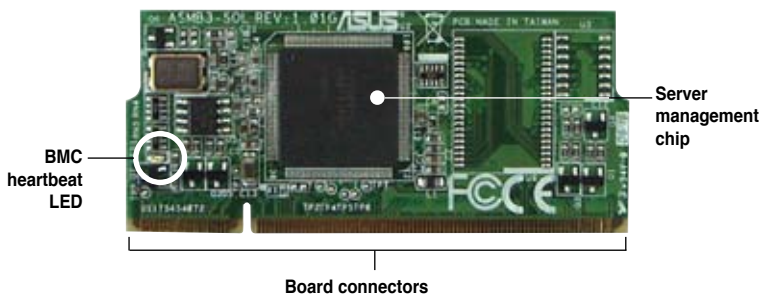
---

If any of the above items is damaged or missing, contact your retailer.

---

## 1.3 Board layout

The ASUS ASMB3-SOL comes in a BMC package. The illustration below shows the major components of the server management board.



### LED indicators

The ASMB3-SOL board comes with a BMC heartbeat LED. Refer to the table below for the LED indications.

LED	Name	Status	Description
LED1	BMC Heartbeat	Blinking	ASMB3-SOL firmware is in execution
		Off	The ASMB3-SOL firmware is corrupted or the server system standby-power is off.

## 1.4 System requirements

Before you install the ASMB3-SOL board, check if the remote server system meets the following requirements:

- ASUS server motherboard with Baseboard Management Controller (BMC) socket\*
- LAN (RJ-45) port for server management\*\*
- Microsoft® Internet Explorer 5.5 or later



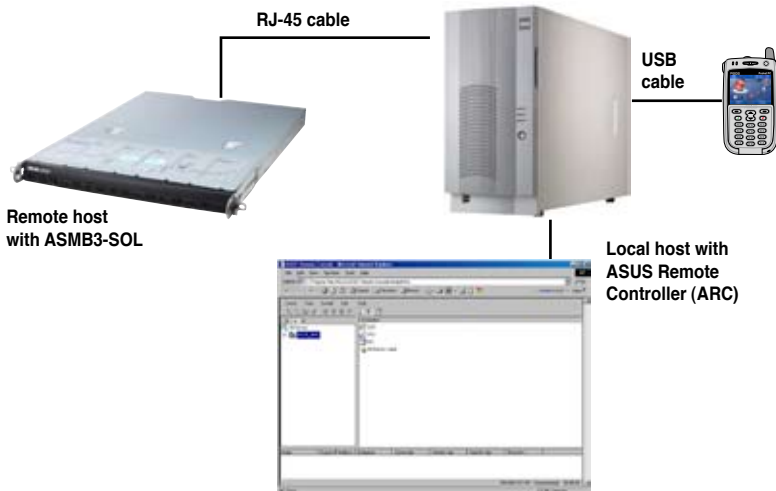
\* Visit the ASUS website ([www.asus.com](http://www.asus.com)) for an updated list of server motherboards that support the ASMB3-SOL.

\*\* See the Appendix for details.

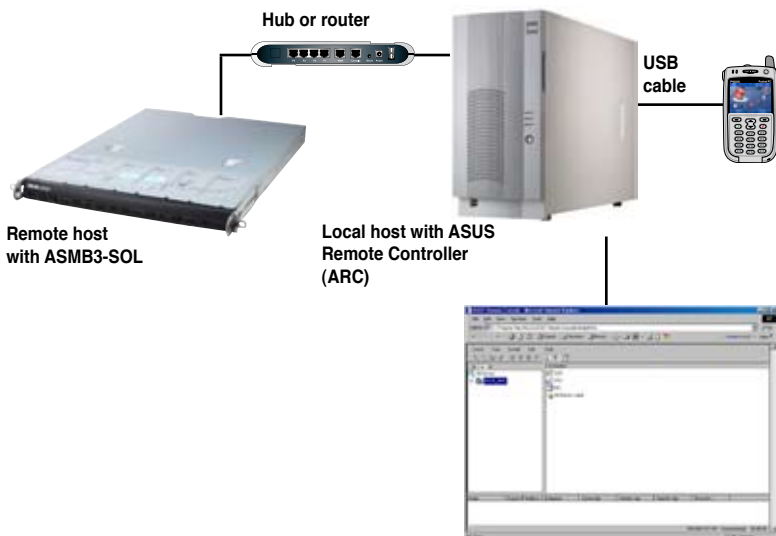
## 1.5 Network and smart phone setup

The ASMB3-SOL server management board installed on the remote server connects to a local/central server via direct LAN connection or through a network hub. Below are the supported server management configurations.

### Direct LAN connection



### LAN connection through a network hub



This chapter provides instructions on how to install the board to the server system and install the utilities that the board supports.

# Installation **2**

## 2.1 Before you proceed

Take note of the following precautions before you install the server management board to the remote server system.



- Unplug the server system power cord from the wall socket before touching any component.
- Use a grounded wrist strap or touch a safely grounded object or to a metal object, such as the power supply case, before handling components to avoid damaging them due to static electricity.
- Hold components by the edges to avoid touching the ICs on them.
- Whenever you uninstall any component, place it on a grounded antistatic pad or in the bag that came with the component.
- Before you install or remove any component, ensure that the power supply is switched off or the power cord is detached from the power supply. Failure to do so may cause severe damage to the motherboard, peripherals, and/or components.

## 2.2 Hardware installation

To install the server management board:

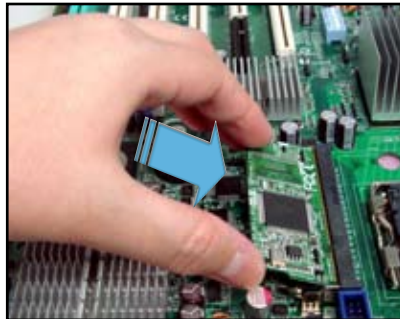
1. Remove the remote server system cover, then locate the Baseboard Management Controller (BMC) socket on the motherboard.



Refer to the Appendix section for the location of the BMC socket on supported motherboards.



2. Position the board at a 30°-45° angle, then match the notch on the board with the break on the socket.
3. Carefully push the board to the socket until its connectors (golden fingers) are fully-inserted to the socket.





4. Press the board firmly until the BMC socket retaining clips snap back and secure the board in place.



When installed, the board appears as shown.



5. Reinstall the server system cover, then connect the power plug to a grounded wall socket.
6. Insert the LAN cable plug to the LAN port for server management.



---

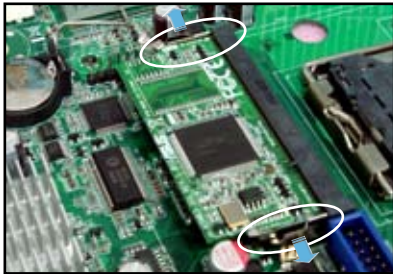
Refer to the Appendix for the location of the LAN port for server management on various server motherboards.

---

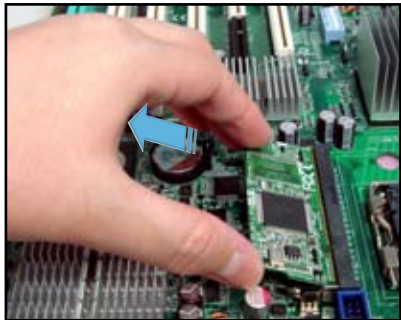
7. For direct LAN configuration, connect the other end of the LAN cable to the local/central server LAN port.  
For connection to a network hub or router, connect the other end of the LAN cable to the network hub or router.

To uninstall the board:

1. Simultaneously push the BMC socket retaining clips outward until the board tilts up.



2. Carefully pull the board out from the BMC socket, then set aside.



## 2.3 Firmware update

You need to update the Broadcom® IPMI and ASMB3-SOL firmware before you start using the ASMB3-SOL board.

### 2.3.1 For motherboards with Broadcom® 5721 LAN

To update the firmware:

1. Insert the support CD into the optical drive.
2. Restart the remote server, then press <Del> during POST to enter the BIOS setup.
3. Go to Boot menu and set the Boot Device Priority item to [CD-ROM].
4. When finished, press <F10> to save your changes and exit the BIOS setup.
5. On reboot, the main menu appears. Type <c> (Broadcom IPMI Firmware Update).

```
MB: KFN4-DRE
a) FreeDOS command prompt
b) Broadcom ASF Firmware Update
c) Broadcom IPMI Firmware Update
d) ASMB3-SOL Firmware Update
Please choose a to d:
```

6. A screen appears, showing the current (if any) firmware version, and the new firmware version. The screen also displays a confirmation message asking whether or not you want to update the firmware appears. Press <Y> to update.

```
started logfile 'C:\fwver.log
none
none

Current BroadCom ASF/IPMI firmware revision : none

New BroadCom ASF/IPMI firmware revision : ASFIPMI v6.09

Update the IPMI firmware ?(y/n) _
```

The firmware updating process starts.

```
*****
Copyright(c) 2000-2005 Broadcom Corporation
Broadcom NetXtreme User Diagnostics 8.30 (18/21/05)
*****
C Brd:Rv Bus PCI Spd Base Irq EEP MAC Fmw Configuration
- - - - -
0 5721:C1 02:00:0 Ex1 250 CFCF 5 128k 00E018042100 5721-v3.49a W,auto
1 5721:C1 04:00:0 Ex1 250 CFCF 9 128k 00E018042101 5721-v3.55a W,auto
0 5721:C1 02:00:0 Ex1 250 CFCF 5 128k 00E018042100 5721-v3.49a W,auto
Programming... 131072

OK
```

- When the update process is complete, the following screen displays the following summary.

```

*****
Copyright(c) 2000-2005 Broadcom Corporation
Broadcom NetXtreme User Diagnostics 8.30 (18/21/05)
*****
C Brd:Rv   Bus      PCI   Spd   Base  Irq  EEP   MAC           Fmw      Configuration
-----
0 5721:C1  02:00:0  Ex1   250   CFCE  5    128k  00E018042100  5721-v3.49a  W,auto
1 5721:C1  04:00:0  Ex1   250   CFCE  9    128k  00E018042101  5721-v3.49a  W,auto

Testing Device:
0 5721:C1  02:00:0  Ex1   250   CFCE  5    128k  00E018042100  5721-v3.49a  W,auto

Checking IRQ.....: passed
Checking NVRAM Content.....: passed
Programming ASF SMB Address: CC.....: passed
Enabling IPMI.....: Done
Checking Bond ID.....: passed
Manufacturing revision.....: C
Firmware Version.....: 5721-v3.49a
MAC Address.....: 00-E0-18-04-21-00
NVRAM Size in KBytes.....: 128/0x/80
TPM Size in KBytes.....: 0/0x0

```

- The screen then goes back to the main menu. Type <d> (ASMB3-SOL Firmware Update).

```

MB: KFN4-DRE
a)  FreeDOS command prompt
b)  Broadcom ASF Firmware Update
c)  Broadcom IPMI Firmware Update
d)  ASMB3-SOL Firmware Update
Please choose a to d:

```

- A screen appears, showing the current (if any) firmware version, and the new firmware version. The screen also displays a confirmation message asking whether or not you want to update the firmware appears. Press <Y> to update.

```

Current Firmware Version : 1.01 (DSBF-D/SAS, DSBF-D, DSBV-D, DSCC-D12/SAS, DSCC-D12, DSCC-DW)
Update Firmware Version : 1.01 (KFN4-DRE)
Do you want to update firmware (y/n)?

```



## 2.4 BIOS configuration

You need to adjust the settings in the BIOS setup of the remote server for correct configuration and connection to the central server.



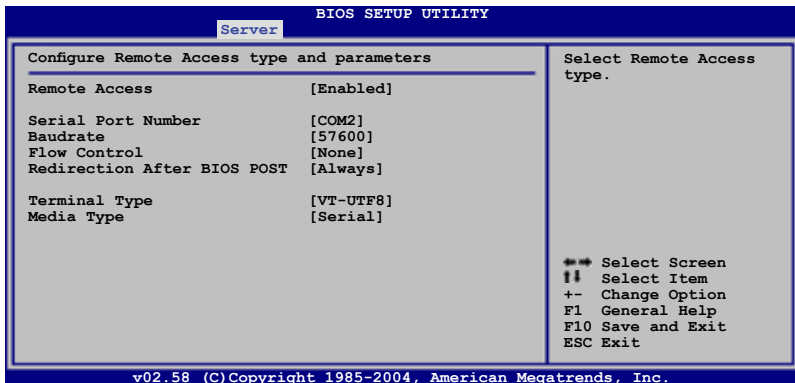
Update the remote server BIOS file following the instructions in the motherboard/system user guide. Visit the ASUS website ([www.asus.com](http://www.asus.com)) to download the latest BIOS file for the motherboard.

### 2.4.1 AMI BIOS setup

#### Remote Access setup

To adjust the Remote Access settings:

1. Restart the remote server, then press <Del> during POST to access the BIOS setup.
2. Go to the Server menu, select the Remote Access Configuration sub-menu, then press <Enter>.
3. Enable Remote Access, then set the following sub-menu items:
  - Serial Port Number to [COM2]
  - Baudrate to [57600]
  - Terminal Type to [VT-UTF8]
  - Media Type to [Serial]



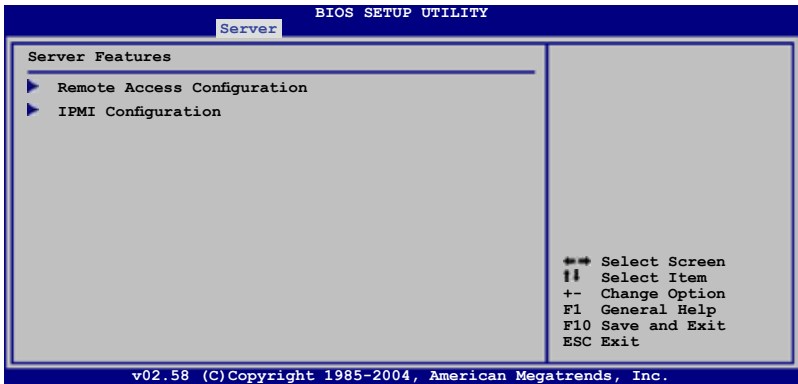
4. Press <Esc>, then select IPMI Configuration sub-menu from the Server menu.
5. Use this sub-menu to adjust the remote server LAN settings or view the System Event Log (SEL).
6. When finished, press <F10> to save your changes and exit the BIOS setup.

You must configure the network settings of both the remote server and the local/central server to establish communication for remote server control and monitoring. Prepare the support CD and a bootable floppy disk to configure the network settings.

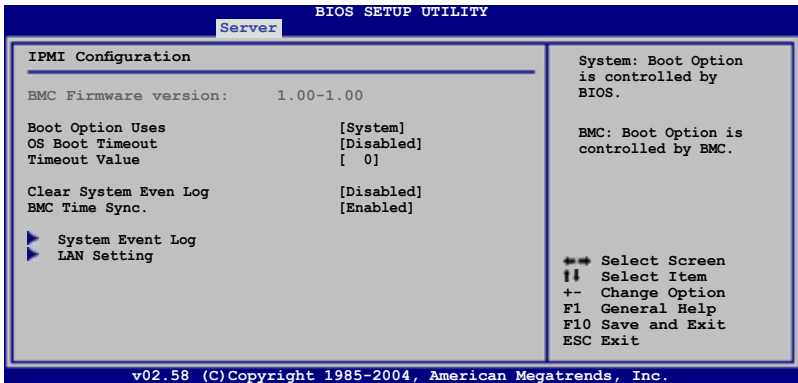
### Running the BIOS IPMI configuration

To configure the IPMI in the BIOS:

1. Restart the remote server, then press <Del> during POST to enter the BIOS setup.
2. Go to the Server menu, then select the IPMI Configuration sub-menu. Use this sub-menu to configure the IPMI settings.
3. When finished, press <F10> to save your changes and exit the BIOS setup.



### IPMI Configuration



Boot Option Uses [System]

Set this item to [System] if you want the BIOS to control the boot option. Set to [BMC] if you want the BMC to control the boot option.

OS Boot Timeout [Disabled]

A system reset occurs after the specified timeout if the operating system boot fails (does not connect to the Server Manager). Configuration options: [Disabled] [Enabled]

Timeout Value [ 0]

Allows you to set the operating system boot timeout in minutes. Valid input ranges from 1 to 100 minutes, with 0 signifying that the boot timeout is inactive.

Clear System Event Log [Disabled]

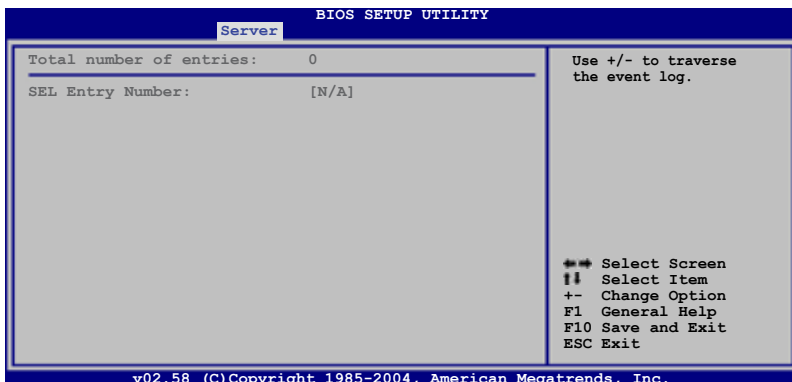
Allows you to clear the system event log.  
Configuration options: [Disabled] [Enabled]

BMC Time Sync. [Enabled]

Allows you to synchronize the BIOS time with the BMC time.  
Configuration options: [Disabled] [Enabled]

System Event Log

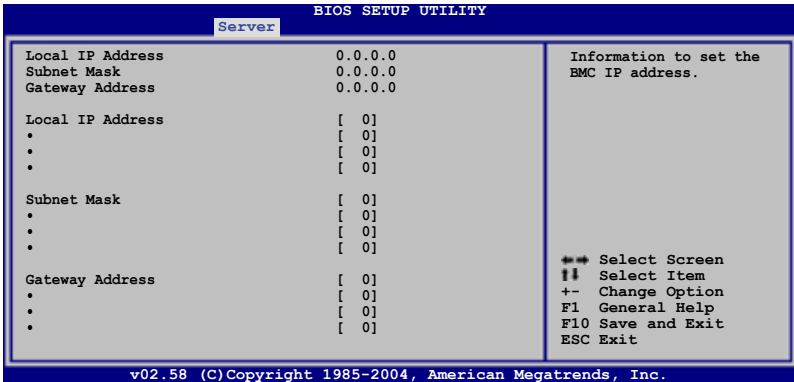
Allows you to view all the events in the BMC event log. It will take a maximum of 15 seconds to read all the BMC SEL records.





## LAN Setting

Allows you to set the BMC LAN Parameter settings.



### **Local IP Address**

Allows you to provide information to set the BMC IP address.

### **Subnet Mask**

Allows you to provide information to set the BMC subnet mask. We recommend that you use the same Subnet Mask you have specified on the operating system network for the used network card.

### **Gateway Address**

Allows you to provide information to set the gateway address. We recommend that you use the same gateway address you have specified on the operating system network for the used network card.

## 2.5 Running the ASMC utility

The ASUS Server Management Card Utility allows you to know the MAC address of the server motherboard and to set the IP address. This utility is available from the support CD that came with the package.

To run the ASMC utility:

1. Restart the remote server, then place the support CD to the optical drive.
2. Press <a> (FreeDOS command prompt) when the screen prompts you to select from available boot options.
3. When the **A**:> prompt appears, type **X**: (where X is the drive letter of the optical drive).
4. When the **X**:> prompt appears, type `cd\asmb3\model\KFN4-DRE(model name)\IDE(model type)*`, then press <Enter>.
5. At the prompt, type `asmc ?`, then press <Enter> to display the ASMC Utility Help Menu. The screen appears as shown.

```
-----+-----
| ASUS Server Management Card Utility 1.00 Help Menu |
-----+-----
Usage:
ASMC -flash -load filename
ASMC -sdr -save filename
ASMC -sdr -load filename
ASMC -kcs[smic/bt/pci_smic] NetFn command data...
ASMC -bmc_ip ip_addr[10.10.10.20]
ASMC -pet_ip_mac ip_addr[10.10.10.20] mac_addr[010203040506]
ASMC -adm_name new_name_string
ASMC -user_name new_name_string
ASMC -adm_password new_admin_password
ASMC -user_password new_user_password
ASMC -init_asmb
ASMC -sol_baud 57600[9600/19200/38400/57600/115200]
ASMC -bmc_info
```

Refer to the table on the next page for a description of the help menu options.



---

\* The path varies based on the motherboard model you purchase. Locate the ASMC file under the correct folder.

---

## ASMC Help Menu options

Options	Description
-flash -load filename	Update the ASMB3-SOL firmware
-sdr -save filename	Save the SDR data to file
-sdr -load filename	Update the SDR data from file
-kcs[smic/bt/pci_smic] NetFn command data....	Send IPMI command
-bmc_ip [ip_addr] (e.g., bmc_ip 10.10.10.20)	Write the BMC IP address
--pet_ip_mac [ip_addr] [mac_addr] (e.g., pet_ip_mac 10.10.10.20 010203040506)	Write the PET destination IP and MAC addresses
-adm_name            new_name_string	Change the administration name
-user_name           new_name_string	Change the user name
-adm_password        new_adm_password	Change the administration password
-user_password       new_user_password	Change the user password
-init_asmb	Initialize ASMB3-SOL
-sol_baud [baud rate] (e.g., sol_baud 57600)	Set the communication Baud rate
-bmc_info	Displays the BMC and PET IP and MAC addresses

### 2.5.1 Configuring the LAN controller

Before you can establish connection to the ASMB3-SOL board, you must configure the LAN port for server management used by the remote server to connect to the local/central server.

To configure the LAN port of the remote server:

1. On the prompt, type `asmc -init_asmb`, then press <Enter>. The screen displays the auto-detected information including the system/motherboard name, and the IPMI2.0 interface. The screen also shows the status of the ASMB3-SOL.

```
c:\dos>asmc -init_asmb
Detect System                   -> DSBF-D/SAS
Detect Motherboard              -> (DSBF-D/SAS)
Detect KCS Interface
Initial BMC O.K.
```

2. Shut down the remote server, then disconnect the power plug from the electrical socket to initialize the ASMB3-SOL.
3. Restart the remote server from the support CD.
4. Run the ASMC utility from the support CD following the instructions in the previous section.

5. Type `asmc -bmc_ip xxx.xxx.xxx.xxx`, then press <Enter> to assign any IP address to the remote server LAN port. The screen displays the request and response buffer. Write the remote server IP address in a piece of paper for reference.

```
c:\dos>asmc -bmc_ip 10.10.10.20
Detect System          -> DSBF-D/SAS
Detect Motherboard    -> (DSBF-D/SAS)
Detect KCS Interface
New BMC IP : 10.10.10.20
```

When finished, the utility returns to the DOS prompt.



---

Make sure that the assigned IP address for both remote and local/central servers are in the same subnet. You can use the network settings utility in your OS to check.

---

6. Type `asmc -bmc_info` on the prompt, then press <Enter> to display the BMC and PET IP and MAC addresses.

```
Firmware Version : 1.01 (DSBF-D/SAS, DSBF-D, DSEV-D, DSCC-D12/SAS, DSCC-D12,
DSCC-DW
BMC IP : 10.10.10.10
BMC MAC : 00 E0 18 51 10 7A
PET IP : 00.00.00.00
PET MAC : 00 00 00 00 00 00
SOL BAUD: 57600
```

7. Restart the remote server, enter the BIOS setup, then boot from the hard disk drive.
8. Configure the ASMB3-SOL baud rate (`asmc -sol_baud 57600`).



---

Make sure that the ASMB3-SOL baud rate is the same as the Remote Access baud rate that you previously set in the BIOS. See section “2.4 BIOS remote console” for details.

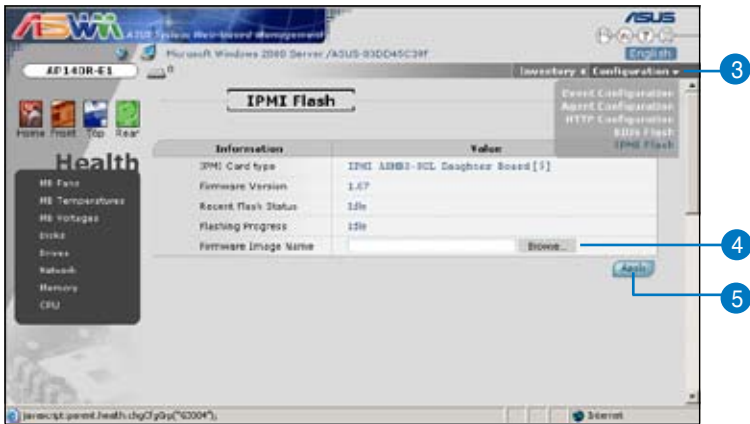
---

9. Adjust the local/central server network settings, if necessary.

## 2.5.2 Using ASWM to update the ASMB3-SOL firmware

You can use the ASUS System Web-based Management (ASWM) application to update the ASMB3-SOL firmware. To do this:

1. Download the latest ASMB3-SOL firmware from the ASUS website (www.asus.com), then save the firmware file.
2. Launch the ASWM application. If ASWM is not yet installed on your server system, use the motherboard support CD to install the application.
3. Click the **Configuration** link, then select **IPMI Flash** from the menu.



4. Click **Browse** to locate the latest firmware you downloaded earlier. When selected, the firmware path and filename appears in the Firmware Image Name field.
5. Click **Apply** to update the ASMB3-SOL firmware.

## 2.6 Software installation

You can monitor, control, or manage the remote server from the local/central server using the ASUS Remote Console (ARC). The ARC is a web-based application available from the support CD that came with the ASMB3-SOL package. You must install the ARC on the local/central server to access the remote server.



---

### Before you install the ARC:

- For SNMP Service: View the Platform Event Trap (PET) information. See page 3-18 for details.
  - For Microsoft® ActiveSync: Enable the SMS feature. See page 3-15 for details.
- 

### 2.6.1 Installing the ARC

To install the ARC to the local/central server:

1. Place the support CD to the optical drive. The CD automatically displays the Drivers menu if Autorun is enabled in your computer.



---

If Autorun is NOT enabled in your computer, browse the contents of the support CD to locate the file ARC.EXE in the ARC folder. Double-click the ARC.EXE to install the application.

---

2. Click the Utilities tab, then click the item ASUS Remote Console.

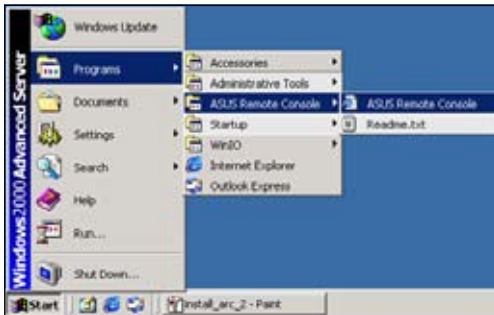


3. Follow the installation wizard instructions to install the utility.



## 2.6.2 Launching ARC

To launch the ARC utility, click Start > All Programs > ASUS Remote Console > ASUS Remote Console from the Windows® desktop.



OR

Double-click the ASUS Remote Console icon on the Windows® desktop.





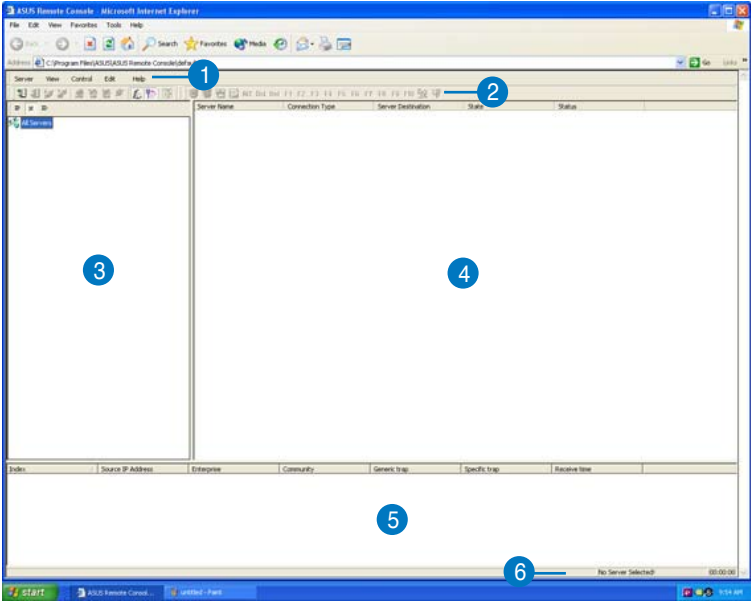


This chapter tells you how to use the software applications that the server management board supports.

# 3 Software support

### 3.1 ASUS Remote Console (ARC)

The ASUS Remote Console (ARC) is a web-based utility that allows you to monitor the remote host's hardware information including temperatures, fan rotations, voltages, and power. This application also lets you instantly power on/off or reset the remote server.



The ARC window is made up of six sections:

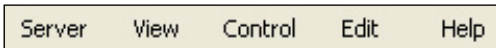
1. Menu bar
2. Tool bar
3. Navigation window
4. Detail/SEL window
5. Event window, and
6. Status bar

Refer to the following sections for details.

### 3.1.1 ARC sections

#### Menu bar

The Menu bar contains all the commands for the ARC application. Click on a menu to display a list of available commands.



Menu	Available commands
Server	add, delete, connect, disconnect server or change the server settings; load/save server node list; general setting; dump/restore all configuration
View	show or hide the tool bar, status bar, navigation, and PET windows
Control	power down/up, reset, power cycle, power on Lan
Edit	delete the System Event Log (SEL), PET log, Reset PET destination, Reset Baud Rate; Set MAC address
Help	open Help contents or view information about the ARC application

#### Tool bar

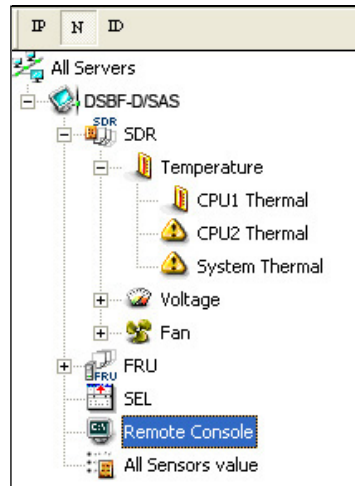
The Tool bar buttons correspond to commonly used commands. The Tool bar offers faster access and execution of these commands. Roll the mouse pointer over a button to display its function.



#### Navigation window

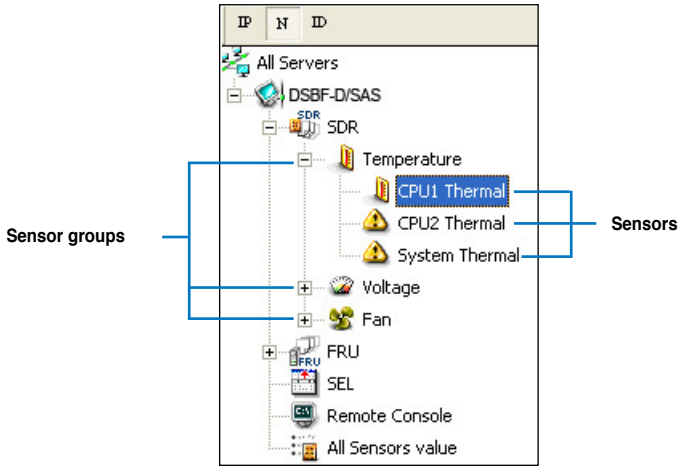
The Navigation window displays the directory of connected and disconnected remote server(s). For multiple monitoring, this window allows you to navigate through the remote servers. Click the All Servers root directory to display all connected and disconnected servers, then click on the server you want to monitor or control.

Click **+** before the server connection to display available remote server information including the Sensor Data Record (SDR), Field Replaceable Unit (FRU), System Event Log (SEL), and Remote Console.

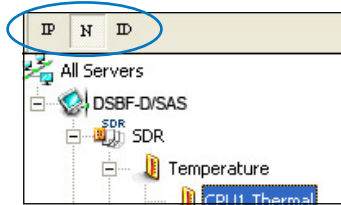


Some remote server information (such as the SDR) contains several sensor groups such as Temperature, Voltage, and Fan. Click **+** before the remote server information to display the sensor groups.

Click **+** before a sensor group to display individual sensors. For example, clicking **+** before the sensor group Temperature displays the CPU1 and system temperatures.



You can also change the server directory display by clicking the buttons on top of the window. For example, clicking the IP button displays the remote server IP address instead of the remote server name (N). Selecting ID displays the remote server ID instead of the server name or IP address.



## Detail/SEL window

The Detail/SEL window displays the detailed SDR and FRU information, and the System Event Log (SEL). The window provides the link for detailed sensor information or system events and allows you to adjust the sensor threshold values.

Attribute	Value	Meanings
Sensor ID	4	
Sensor Name	CPU1 Thermal	
Current Value	0x2E	45.0 degrees C
Theory Value	0x28	40.0 degrees C
Upper non-recoverable Threshold	0x60	96.0 degrees C
Upper critical Threshold	0x50	80.0 degrees C
Upper non-critical Threshold	0x50	80.0 degrees C
Lower non-recoverable Threshold	0x08	8.0 degrees C
Lower critical Threshold	0x10	16.0 degrees C
Lower non-critical Threshold	0x18	24.0 degrees C

## Event window

The Event window displays the Platform Event Trap (PET) received by the ARC. The PET information includes the event index, source IP address, enterprise, community, generic and specific traps, and time ticks. The PET information is a system management alert in SNMP Trap format and is used for IPMI alerting as well as alerts using the ASF specification.



## Status bar

The Status bar located at the bottom of the ARC window displays the connection status to the remote server, connection duration, IP address of the remote server, and the progress of SDR/SEL/FRU information download.



### 3.1.2 Connecting to the remote server

To connect to the remote server:

1. From the menu bar, click Server, then select New. An Add new server connection window appears.



2. Type the remote server name and IP address on the fields. Click Save Default to set the remote server connection as the default. Otherwise, click OK to continue or Cancel to close the window.




The default server connection name and IP address are automatically displayed everytime you add a new server connection.

3. When prompted, select IPMI Server, then click Continue.



The navigation window displays the remote server. The available remote server information are displayed on the Detail/SEL window.



4. Use any of these options to connect to the server:
  - Click  before the remote server to display the remote server information, then select from the list.
  - Double-click a remote server information from the Detail/SEL window.
  - Click Server, then select Connect.
5. When prompted, enter the default user name (admin) and password (admin).
6. Set the connection request level authentication and privilege, then click OK.



---

The default connection request level authentication is HMAC-SHA1 with Administrator privileges. You may change these configuration according to your network settings or preference.

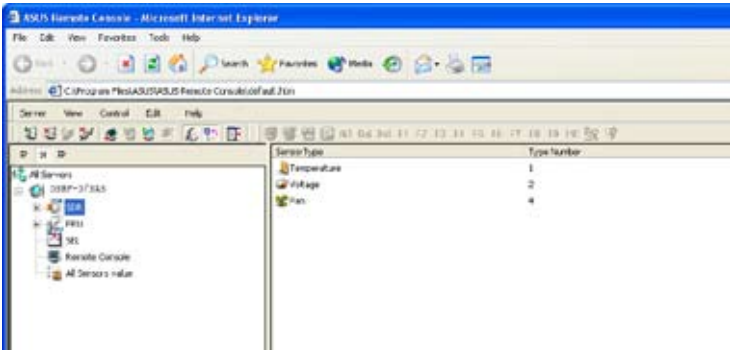
---

### 3.1.3 Retrieving sensor information

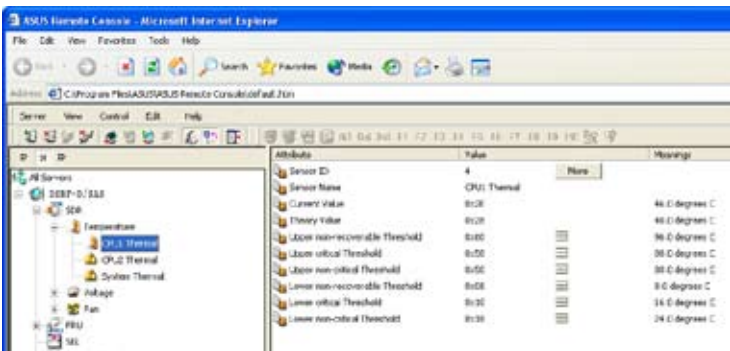
The Sensor Data Record (SDR) provides remote server system information through available sensors including CPU/system/power temperatures, voltages, fan speeds, chassis intrusion, etc. The SDR also provides information on the sensor location (e.g. CPU1, CPU2, FAN1), event generation, and access information.

To retrieve a sensor information:

1. From the navigation window, click **+** before the server name to display the remote server information.



2. Click **+** before the SDR to display the sensor groups (e.g. Temperature), then click **+** before a sensor group to display the individual sensors. Select a sensor (e.g. CPU1 THERMAL) to display its values in the Detail/SEL window.



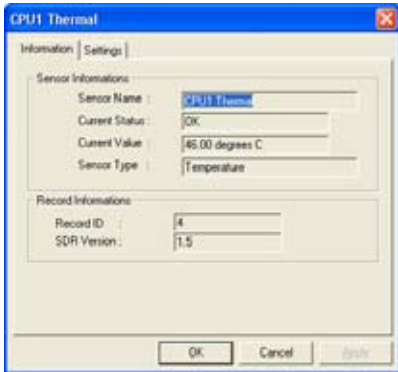
The Detail/SEL window displays the sensor data attributes, values, and meanings. From this window, you can adjust the sensor threshold values by clicking the up/down arrow button after each value.



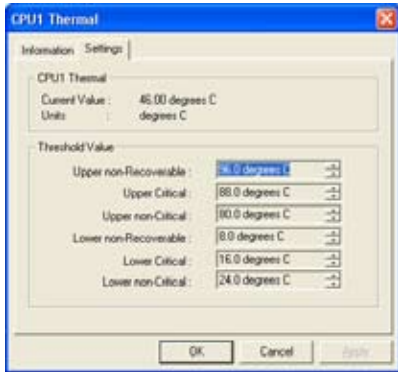
3. Click More. A sensor window appears displaying additional information on the sensor.

The Information tab displays basic sensor information including the sensor name, current status, current value, and sensor type.

The tab also displays the sensor record ID and SDR version.



4. Click the Settings tab to adjust the sensor threshold values. Click on the up/down arrow button after each threshold value to adjust. Click OK to close the window.



### 3.1.4 Displaying FRU information

The Field Replaceable Unit (FRU) information provides the manufacturer, product name, and/or serial number of various modules and components installed on the remote server. For example, the FRU feature can display the remote server motherboard name, model, and serial number. You can use this feature when retrieving information on a module or component installed on the remote server.



The FRU information feature allows you to obtain component or module information even when the remote server is down or off.

To display the FRU information:

1. From the navigation window, click **+** before the server name to open the remote server information.




2. Click **+** before the FRU to display available FRU information, then click **+** before the module/component. Select a module or component from the list to display the FRU information in the Detail/SEL window.

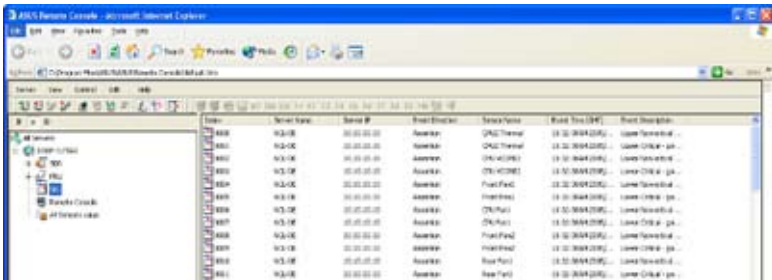


### 3.1.5 Displaying system event logs

The System Event Log (SEL) is a non-volatile storage area where all remote server system events are stored for real-time tracking or later retrieval. The ARC application can display system events for efficient remote server monitoring and troubleshooting.

To display the system events:

1. From the navigation window, click  before the server connection, then click SEL. The status bar displays the progress of the SEL download. When finished, the Detail/SEL window displays the system events in chronological order.



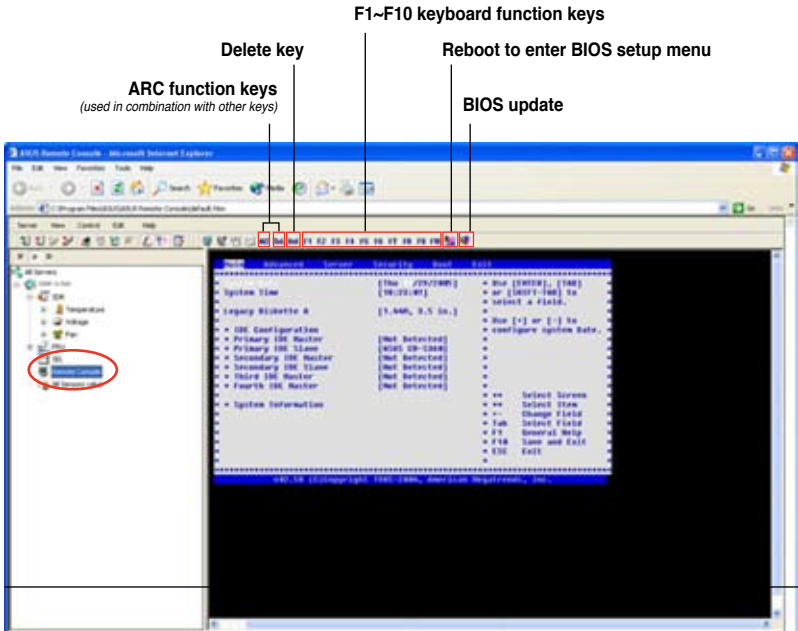
2. Double-click an event to display an Event Information window. This window displays the sensor type and record ID, event message, current and threshold values, and other system event information.
3. Click OK to close the window.



### 3.1.6 Using Remote Console


The Remote Console feature lets you see the remote server screen (text only) and is useful when you update the remote server BIOS file or adjust the BIOS settings. Refer to section “3.1.9 Updating the remote server BIOS file” for details on remote BIOS update.

To display the remote server console, press the Remote Console item from the navigation window. The remote server screen appears in the Detail/SEL window.

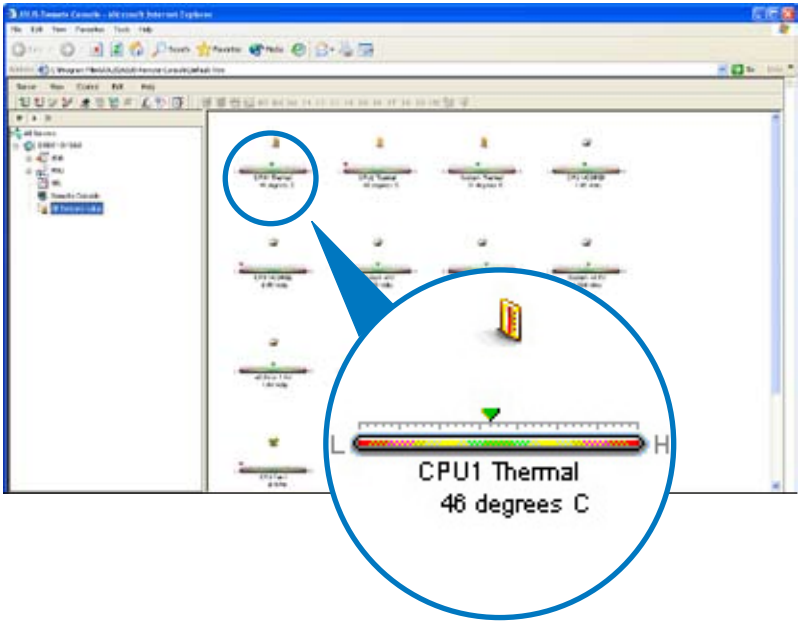


### 3.1.7 Displaying all remote server sensors

To display all remote server sensors in graphical format:

1. From the navigation window, click  before the server name to open the remote server information.
2. Click **All Sensors value**. All remote server sensors are displayed on the Information window in graphical format.

The color bar represents the upper/lower threshold values of each sensor.  
The green pointer indicates the current value of the sensor.



### 3.1.8 Adjusting the monitoring settings

The ARC application allows you to adjust the remote server monitoring settings including SEL polling, SDR reading, ASF, and PET.

To adjust the monitoring settings:

1. Click **Server** on the menu bar, then select **General Setting** from the drop-down menu. A **Server Settings** window appears.
2. Click on the up/down arrow button after each setting to adjust the value.
3. Click **OK** to save your changes and close the window; otherwise, click **Cancel** to ignore your changes.



## Enabling the Short Message Service (SMS) feature

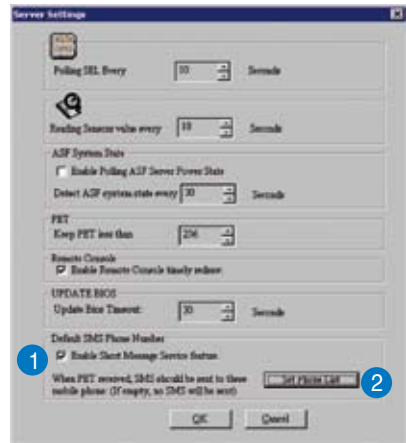
The Short Message Service or SMS feature allows you to receive Platform Event Trap (PET) information on your smart phone (ASUS P505).



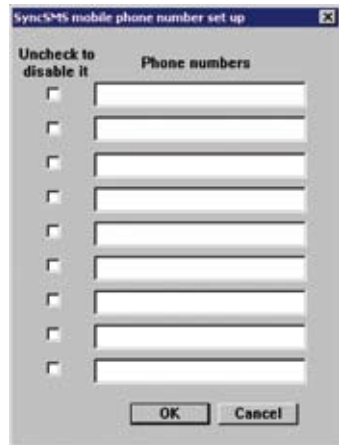
You must install Microsoft® ActiveSync® before you enable the SMS feature. Visit [www.microsoft.com](http://www.microsoft.com) to download Microsoft® ActiveSync®.

To enable the SMS feature:

1. Check the box before the **Enable Short Message Service** feature.
2. Click **Set Phone List**.



3. When the **SyncSMS mobile phone number setup** window opens, key-in the mobile or PDA phone number in the box. You may click the box before each phone number to disable it.
4. Press **OK**.



### 3.1.9 Updating the remote server BIOS file

The ASMB3-SOL features a remote BIOS file update capability that allows you to update the BIOS file of the remote server when the file gets outdated or corrupted.




---

Make sure to download and save the latest BIOS file for the remote server motherboard. Visit the ASUS website for the latest BIOS file.

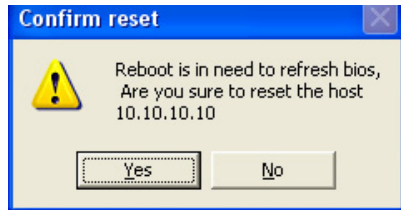
---

To update the remote server BIOS file:

1. Download and save the latest BIOS file for the remote server motherboard.
2. From the navigation window, click **Remote Console** to display the remote server screen. See section 3.1.6 for details.
3. Click the update BIOS icon [] in the toolbar.
4. Locate the latest BIOS file when the Open window appears, then click **Open**.
5. Click **Yes** when the **Confirm reset** dialog box appears.

ARC resets the remote server, then automatically updates the BIOS file.

6. When finished, establish connection with the remote server, then use the toolbars to adjust the BIOS setup.





### 3.1.10 Controlling the remote server power

ARC allows you to power up, power down, or reset the remote server using the power menu.



Before turning off or resetting the remote server, make sure that it is not being used and that no application is currently running on it to avoid data loss.

To power down the remote server:

1. Click **Control** on the menu bar, then select **Power down** from the drop-down menu.

**OR**

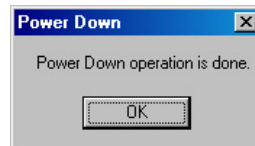
Click the power down button on the tool bar.



2. Click **Yes** when the Confirm power down window appears.



3. The remote server is turned off. Click **OK** to close the window. Use the same instructions as reference when powering up or resetting the remote server.



### 3.1.11 Viewing PET information

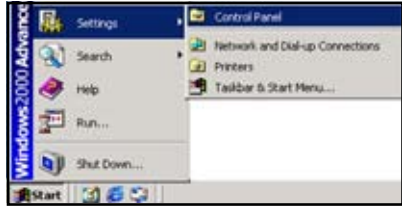
The Platform Event Trap or PET is an SNMP trap used for system management alerts. When the ARC receives a PET, it displays a pop-up window notifying you of the alert and its source (IP address). Right-click the window to close.



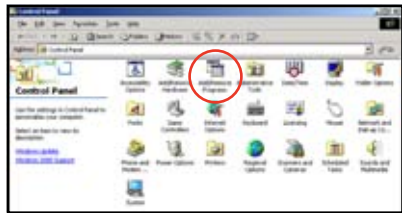
You need to install an SNMP service to the remote server to receive PET information.

To install an SNMP service to the remote service:

1. On the Windows® taskbar, click **Start > Settings > Control Panel**.



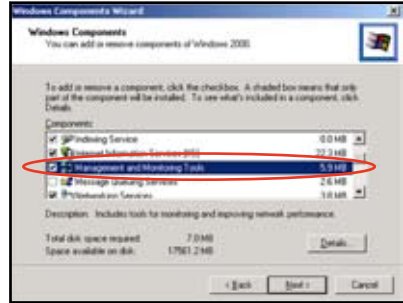
2. Double-click **Add/Remove Programs**.



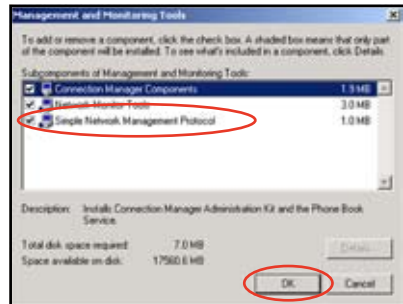
3. Double-click **Add Windows Components**.



4. Double-click **Management and Monitoring Tools**.



5. Select **Simple Network Management Protocol (SNMP)**.
6. Click **OK**.



## Important notice for Windows® XP (Service Pack 2) users

If the remote server system is behind a firewall, you must create a UDP port to receive PET information.

To create a UDP port:

1. Double-click the **My Computer** icon from the Windows® desktop, then click the **My Network Places** link.
2. Click the **View network connections** link, then select the LAN connection the remote server system is using.
3. Right-click the LAN connection, then select **Properties** from the drop-down menu.
4. Click the **Advanced** tab, then click the **Settings** button.
5. On the **Services** tab, click the **Add** button to display a **Service Settings** window.
6. Type a name on the **Description of service field** (i.e. ASUS ARC).
7. Type the IP address of the local/central server, then set the **External** and **Internal Port number** to **162**.
8. Select **UDP**, then click **OK**. The created service is displayed in the Services list. Check the box before the service, then click **OK**.

You must also adjust the Internet Explorer settings to allow active contents to run in the local/central server. To do this:

1. From the **Internet Explorer** menu, click **Tools**, then select **Internet Options** from the drop-down menu.
2. Click the **Advanced** tab.
3. Enable the item "**Allow active content to run in files on My Computer**".
4. Click the **Apply** button, then click **OK** to close the window.

## 3.2 ASUS Host Management Controller Setup

The ASUS Host Management Controller Setup utility provides precise configuration and basic functions including System Event Log (SEL) generation and System Data Record (SDR) reading in DOS mode.

This utility also supplies configuration sequences for the type of host interface as well as direct real-time monitoring of system information including CPU temperature(s), fan speeds and system voltages.

### 3.2.1 Installing and launching the ASUS Host Management Controller Setup utility

To install the ASUS Host Management Controller Setup utility:

1. Boot the server in DOS mode using the support CD.
2. When the **A: >** prompt appears, type **x:** (where X is the drive letter of the optical drive).
3. When the **x: >** prompt appears, type **cd \asmb3\model\KFN4-DRE (model name) \IDE (model type) \***, then press <Enter>.
4. At the prompt, type **asmc**, then press <Enter> to display the ASMC Utility Help Menu. The screen appears as shown.

```
A: \>x:  
X: \>cd \asmb3\model\KFN4-DRE\IDE  
X: \>asmc
```

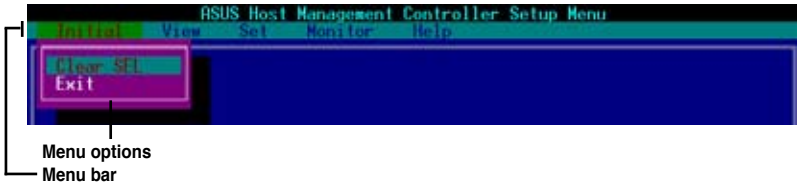
5. The main utility screen appears. Press <Enter>.



\* The path varies based on the motherboard model you purchase. Locate and install the ASMC file under the correct folder.

### 3.2.2 Command fields

The utility menu bar has five commands: Initial, View, Set, Monitor and Help. You can select a command using the left or right arrow button on the keyboard. After selecting a command, use the down arrow key to display available options. Select a command, then press <Enter> to execute.

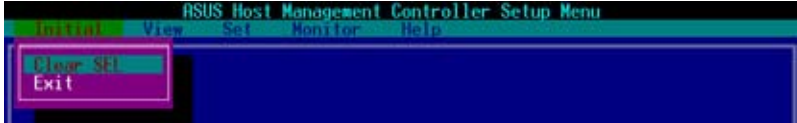


### 3.2.3 Initial

The Initial command allows you to clear the SEL information or exit the utility.

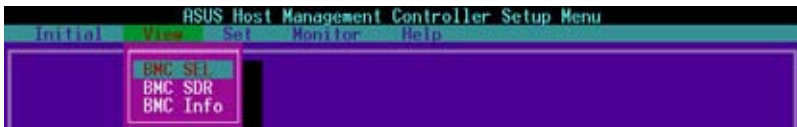
Go to **Initial** command, then select **Clear SEL** to empty all System Event Log information for a refresh set of data records. Use the **Clear SEL** command when creating a new log that begins at an exact time for precise system monitoring.

Select **Exit** to close the utility and return to the DOS prompt.



### 3.2.4 View

The View command displays the Baseboard Management Controller (BMC) data record including the System Event Log (SEL), the System Data Record (SDR), and general BMC information.





## To view the BMC information:

1. Select **BMC Info** from the **View** command option, then press <Enter>. A list of BMC information appears on the left pane.
2. Use the down arrow button to select a BMC information. The BMC information is displayed in the right pane.

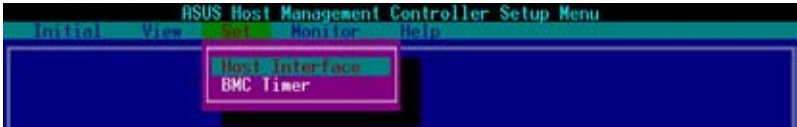


3. Press <Esc> to return to the main screen.



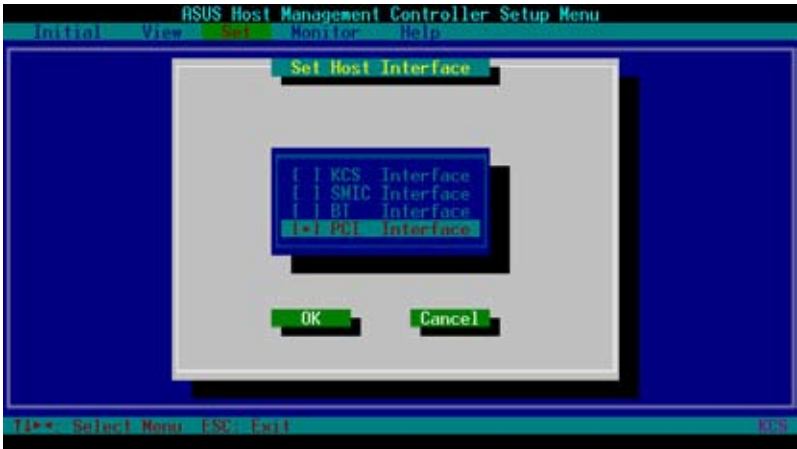
### 3.2.5 Set

The **Set** command controls the host interface type and the correct BMC time.



#### To select the host interface:

1. Select **Host Interface** from the **Set** command option, then press <Enter>. The screen displays the host interfaces supported by the server management board.
2. Use the down arrow button to select a host interface, then press <Enter>.



You can select from the following interfaces:

- KCS Interface** - Keyboard Controller Style
- SMIC Interface** - Server Management Interface Chip
- BF Interface** - Block Transfer
- PCI Interface** - Peripheral Component Interconnect

3. When finished, press <Esc> to return to the main screen.

#### To set the BMC Timer:

1. Select **BMC Timer** from the **Set** command option, then press <Enter>.
2. Set the BMC IPMI timer to the current system time.
3. When finished, press <Esc> to return to the main screen.

### 3.2.6 Monitor

The **Monitor** command displays real-time data on the remote server system and CPU temperatures, voltages, and fan speeds.



#### To display a remote server information:

1. Select a sensor from the **Monitor** command options, then press <Enter>. A list of server information appears on the left pane.
2. Use the down arrow button to select a monitor information. The selected monitor information details are displayed in the right pane.



3. Press <Esc> to return to the main screen.


### 3.2.7 Help

The **Help** command displays the available utility options, utility version, and copyright information.



The Appendix shows the location of the LAN port for server management and BMC socket on several motherboards. This section also presents common problems that you may encounter when installing or using the server management board.

# Reference information

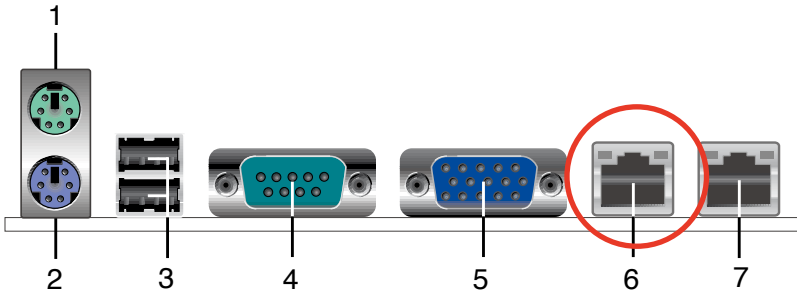


# A.1 LAN port for server management

The ASUS server motherboards that support the ASMB3-SOL comes with two LAN (RJ-45) ports: one for network connection and the other for server management. For easy identification, the LAN port for server management is the LAN port near the VGA port. You must use the LAN port for server management to connect the remote server to the local/central host (direct LAN connection) or to the network hub or router.

Refer to the illustrations below to identify the LAN port for server management on some server motherboards.

## KFN4-DRE motherboard

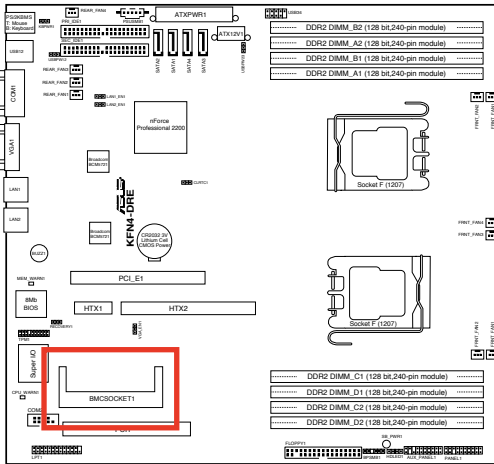


## A.2 BMC socket

The ASUS server motherboards that support the ASMB-LE comes with a Baseboard Management Controller (BMC) socket.

Refer to the illustrations below to locate the BMC socket on different server motherboards.

### KFN4-DRE motherboard



## A.3 Troubleshooting



This troubleshooting guide provides answers to some common problems that you may encounter while installing and/or using ASUS ASMB-LE. These problems require simple troubleshooting that you can perform by yourself. Contact the Wireless LAN Technical Support if you encounter problems not mentioned in this section.

Problem	Solution
<b>The local/central server cannot connect to the ASMB3-SOL board.</b>	<ol style="list-style-type: none"><li>1. Check if the LAN cable is connected to the LAN port for server management. See page A-2 for details.</li><li>2. Check if the remote server LAN port is working properly. If you have not previously installed the LAN controller driver, install the same using the system support CD.</li><li>3. Make sure that the AC power cord has been unplugged for at least 5 seconds after the firmware updating.</li><li>4. Make sure that the IP address of both the remote and local/central servers are on the same subnet.</li><li>5. Set the remote server IP address and MAC address using the ASUS Host Management Controller Setup. See Chapter 2 for details.</li></ol>
<b>The ARC cannot receive PET information from the remote server.</b>	Install SNMP service. See section "3.1.11 Viewing PET information" for details.
<b>Short Message Service (SMS)</b>	<ol style="list-style-type: none"><li>1. Check if the USB cable is connected properly.</li><li>2. Check if your smart phone (ASUS P505) is working properly.</li><li>3. Install Microsoft® ActiveSync.</li><li>4. Set the phone number.</li></ol>
<b>Serial Over LAN (SOL)</b>	<ol style="list-style-type: none"><li>1. Check the BIOS remote console setting. See section 2.4 for details.</li><li>2. Check if the firmware baud rate is the same as the BIOS setting. See section "2.5.1 Configuring the LAN controller" for details.</li></ol>