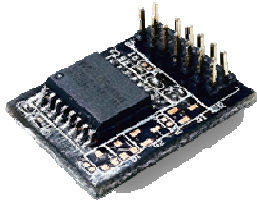


ASMB6-iKVM

Romley only (Z9 Series)

For support downloads, [CLICK HERE](#).



ASMB6-iKVM

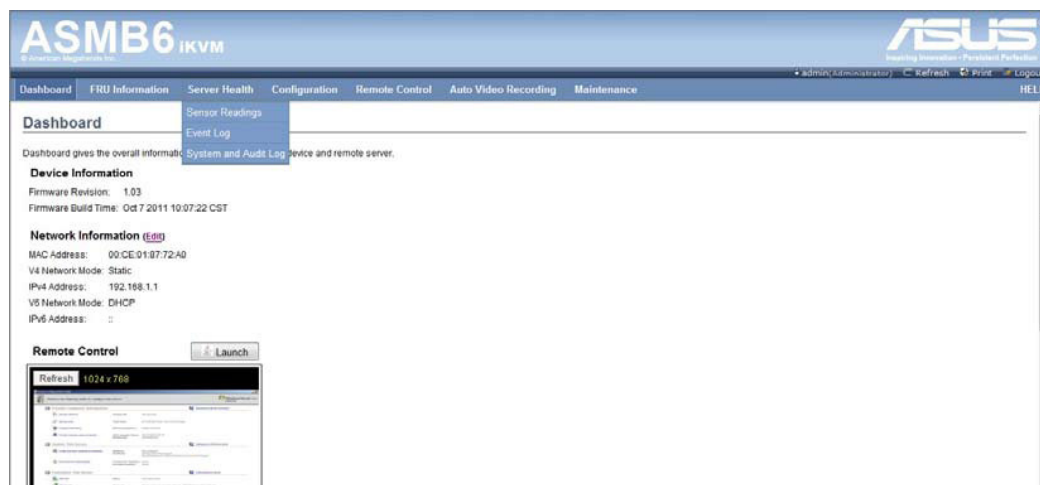


Server MB

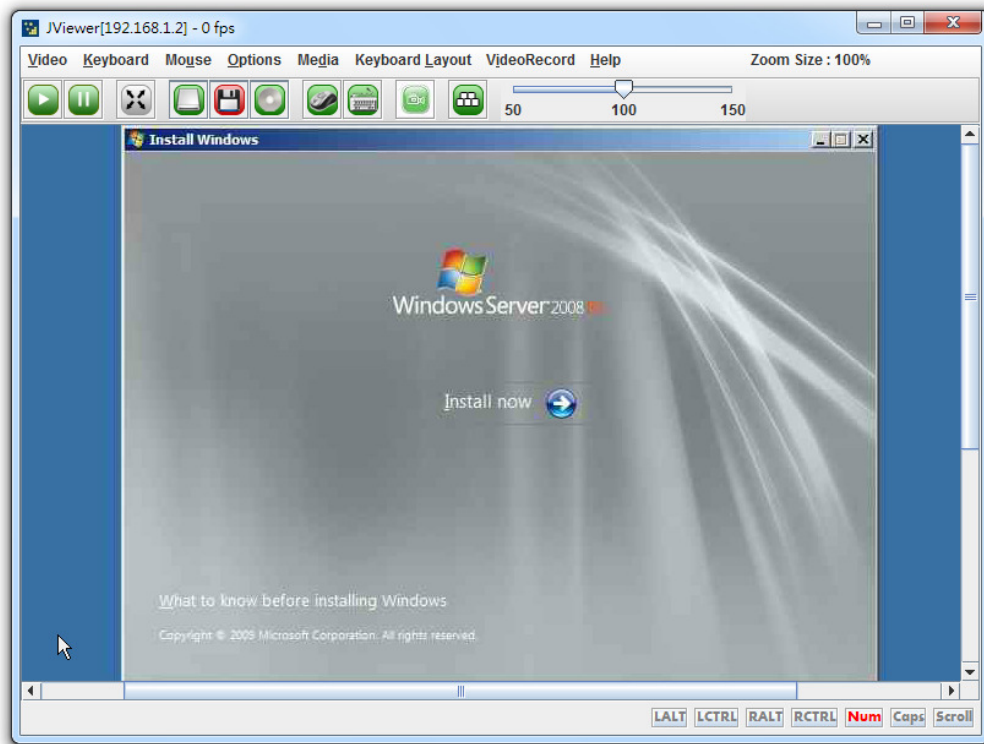
ASUS ASMB6-iKVM is an effective remote server management chip that is IPMI 2.0 compliant and provides the OS-independent and cross-platform interface for monitoring the server system such as temperature, voltage, and Fan status etc. MIS can be informed of the server working status from anywhere, anytime via real-time event notification.

With simple steps, MIS is able to control servers by functions keys and remote server screen to accomplish KVM (Keyboard, Video, Mouse) over LAN, which is based on BIOS-level access and keeps working to provide around-the-clock remote monitor and diagnosis through GUI (Web-based Graphical User Interface) even the server OS is down.

ASUS Web GUI

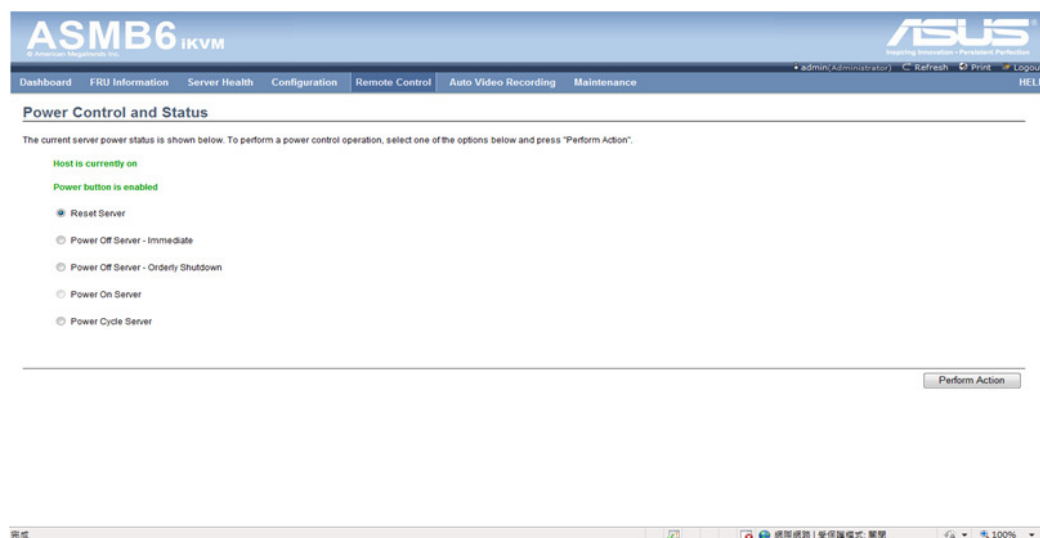


Remote Server Screen



The ASMB6-iKVM module offers advanced server management functions including “remote OS installation”, “remote power on/off/reset”, “remote control”, “remote hardware health monitoring” and “system event log”. Through the enhanced data encryption (in Advanced Encryption Standard), the internet security can be protected.

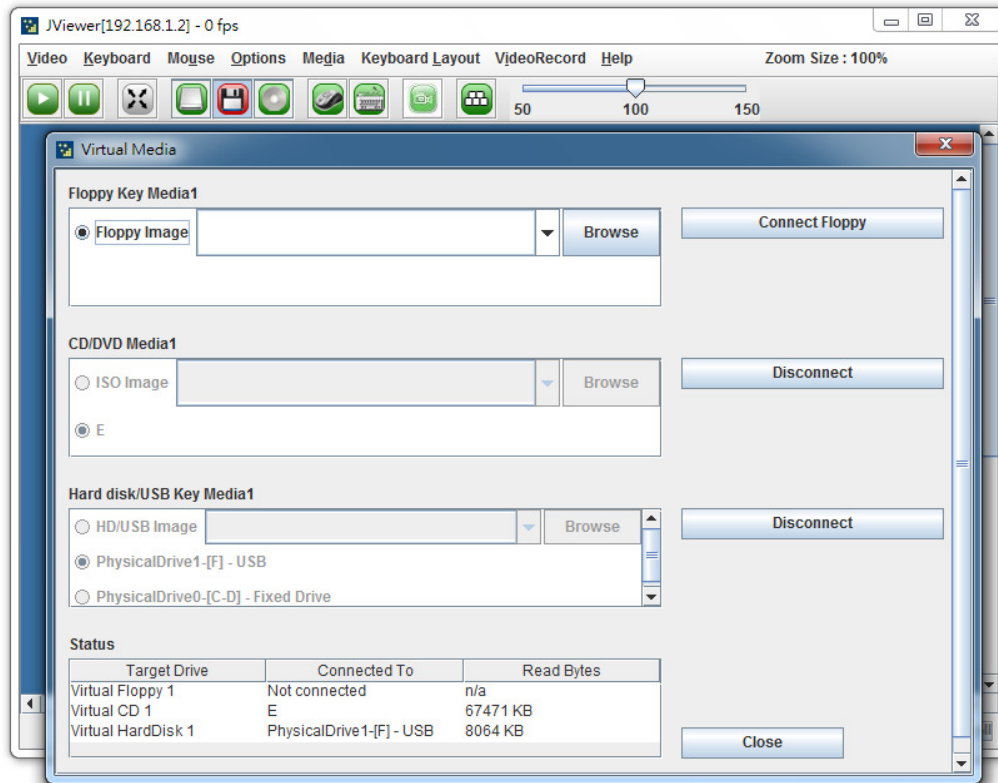
Remote Power Control



Multiple Virtual Media over LAN allows administrators to share the data saved in a

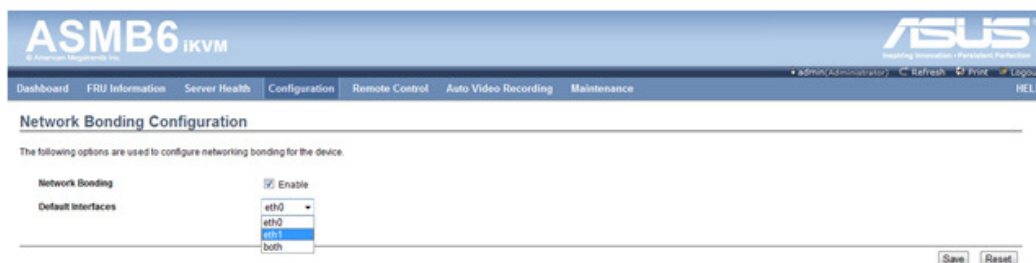
local drive (simultaneous floppy, Hard disk or USB and CD or DVD redirection) to target servers, which provide a way for easy maintenance and simplify OS deployment process. At the same time, the KVM function also enables faster troubleshooting than before by fixing server problems from wherever you are and therefore reduces system downtime and operation cost.

Multiple Virtual Media over LAN



Network bonding could support automatic failover witch switch over automatically to a redundant network when dedicated LAN failed.

Network Bonding support



With ASMB6-iKVM, MIS has the most quick and efficient way to recover the system in service and improve the system's availability significantly by the complete remote management tools.

ASMB6-iKVM SPEC summary

Chipset	Aspeed 2300
Internal RAM	112 MB for system 16 MB for video
Internal ROM	32 MB
Timers	32-bit Watchdog Timer
Main features	IPMI 2.0-compliant and supports KVM over LAN Web-based user interface (remote management) Virtual media Network Bonding support
Browsers Support	<ul style="list-style-type: none">- HTML5/JS based UI- Multi-language support in Web interface with English as the currently supported language- Internet Explorer 7, 8 (IE6 for SP2)- Firefox 3.0 and above- Google Chrome 2.0 and above- Safari 3.0 and above- Opera 9.64 and above
OS Support	Host Operating System: <ul style="list-style-type: none">- Windows Server 2003 32/64-bit- Windows Server 2008 32/64-bit- Red Hat Enterprise Linux 5.x 32/64-bit- SuSE Linux Enterprise Server 10.x 32/64-bit- SuSE Linux Enterprise Server 11.x32/64-bit Client Operating System: <ul style="list-style-type: none">- Windows XP- Windows Vista- Windows Server 2003 32/64-bit- Windows 7 32/64-bit- Fedora Core 9 and above 32/64-bit- Red Hat Enterprise Linux 5.x 32/64-bit- Mac OS X
Form factor	22 mm x 17 mm

* Specifications are subject to change without notice.