

# Teaming function for Broadcom NIC

## User's Guide

---

## Contents

|                                                 |   |
|-------------------------------------------------|---|
| Chapter 1. Introduction .....                   | 1 |
| 1.1 What are BACS2 and BASP? .....              | 1 |
| Chapter 2. BACS2 Installation and Setting ..... | 2 |
| 2.1 How to install BACS2 and BASP? .....        | 2 |
| 2.2 Teaming Function Setting Steps .....        | 3 |
| 2.2.1 Step1 .....                               | 3 |
| 2.2.2 Step2 .....                               | 4 |
| 2.2.3 Step3 .....                               | 5 |
| 2.2.4 Step4 .....                               | 6 |
| 2.2.5 Step5 .....                               | 7 |
| 2.2.6 Step6 .....                               | 8 |
| 2.2.7 Step7 .....                               | 8 |
| Reference .....                                 | 9 |
| Trademark Acknowledgment .....                  | 9 |

# Chapter 1 Introduction

## 1.1 What are BACS2 and BASP?

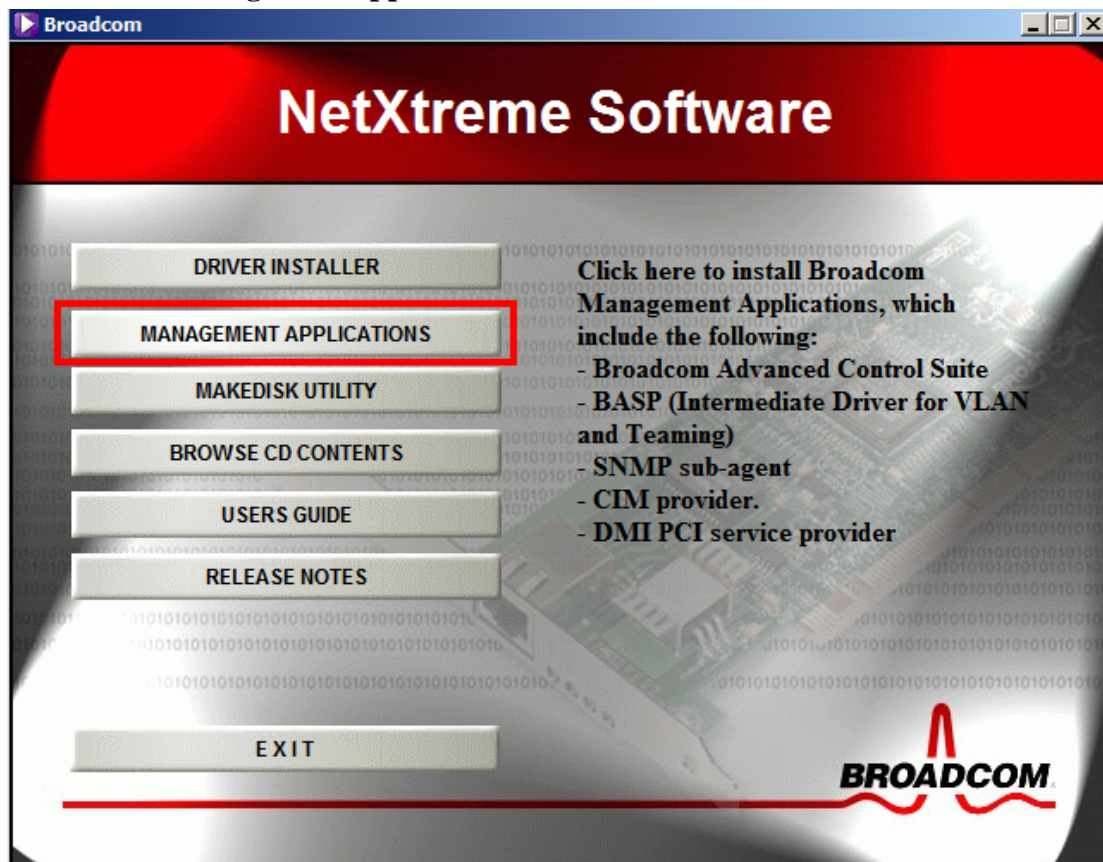
Broadcom Advanced Control Suite 2 (BACS2) is an integrated utility that provides useful information about each Broadcom network adapter that is installed in your server. BACS2 also enables you to perform detailed tests, diagnostics, and analyses on each adapter, as well as to view and modify property values and view traffic statistics.

Broadcom Advanced Server Program (BASP), which runs within Broadcom Advanced Control Suite 2, is used to configure teams for load balancing, fault tolerance, and virtual local area networks (VLANs). BASP functionality is available only on servers that use at least one Broadcom NetXtreme Gigabit Ethernet adapter.

## Chapter 2 BACS2 Installation and Setting

### 1.2 How to install BACS2 and BASP?

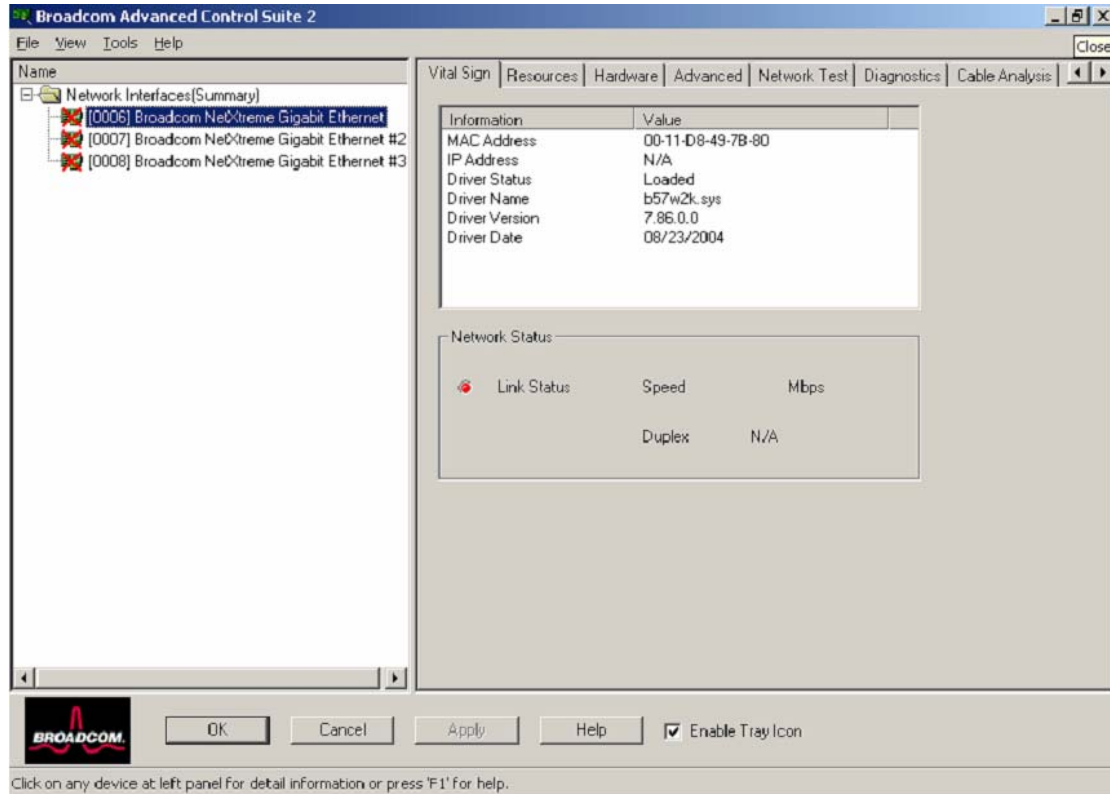
1. Launch **NetXtreme Software** installation guide.
2. Choose **Management application**.



## 1.3 Teaming Function Setting Steps

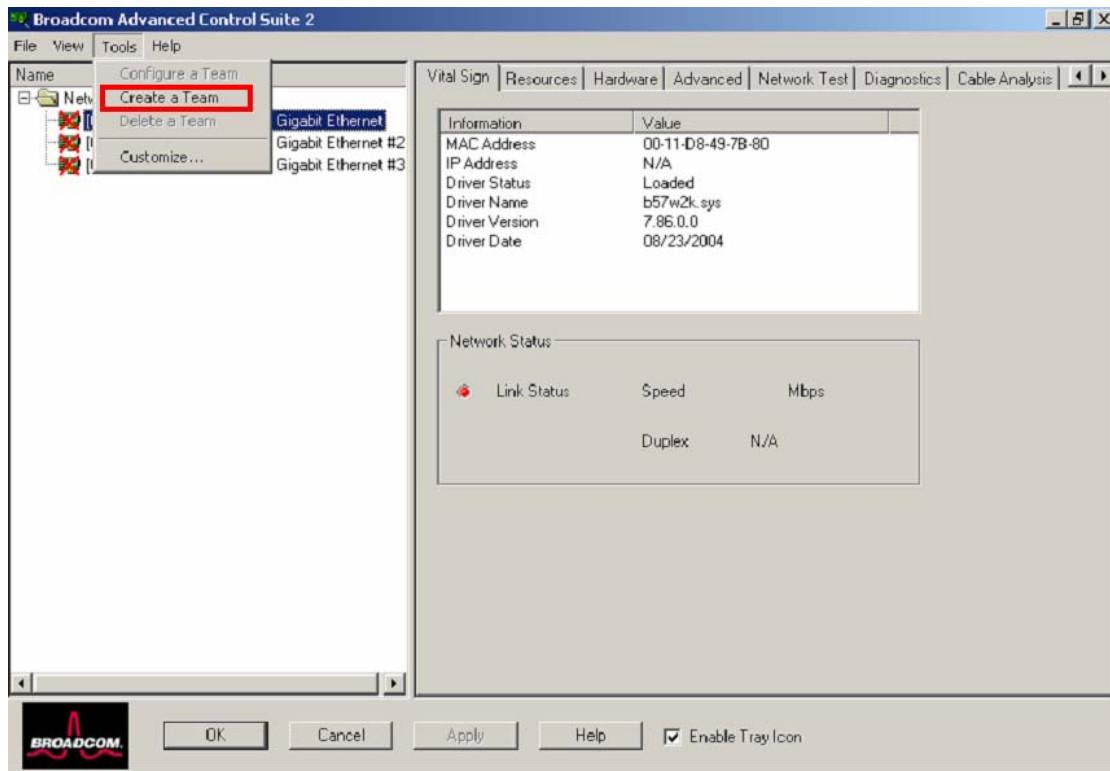
### 1.3.1 Step1

Open the Broadcom Advanced Control Suite utility.



## 1.3.2 Step2

Left-click on the “Tools”, and choose “Create a Team” option.



### 1.3.3 Step3

Enter a name for the Team and choose a Team Type. Click Next to continue.

New Team Configuration

Enter a name you will use to identify this team

Team Type

- Smart Load Balance and Fail Over
- Link Aggregation (802.3ad)
- Generic Trunking (FEC/GEC)/802.3ad-Draft Static
- SLB (Auto-Fallback Disable)

< Back   Next >   Apply   Cancel   Help

- **Smart Load Balancing and Fail Over**

Smart Load Balancing provides both load balancing and failover when configured for Load Balancing, and only failover when configured for fault tolerance.

- **Link Aggregation (IEEE 802.3ad)**

Link Aggregation is similar to Generic Trunking except that it uses the Link Aggregation Control Protocol to negotiate the ports that will make up the team.

- **Generic Trunking**

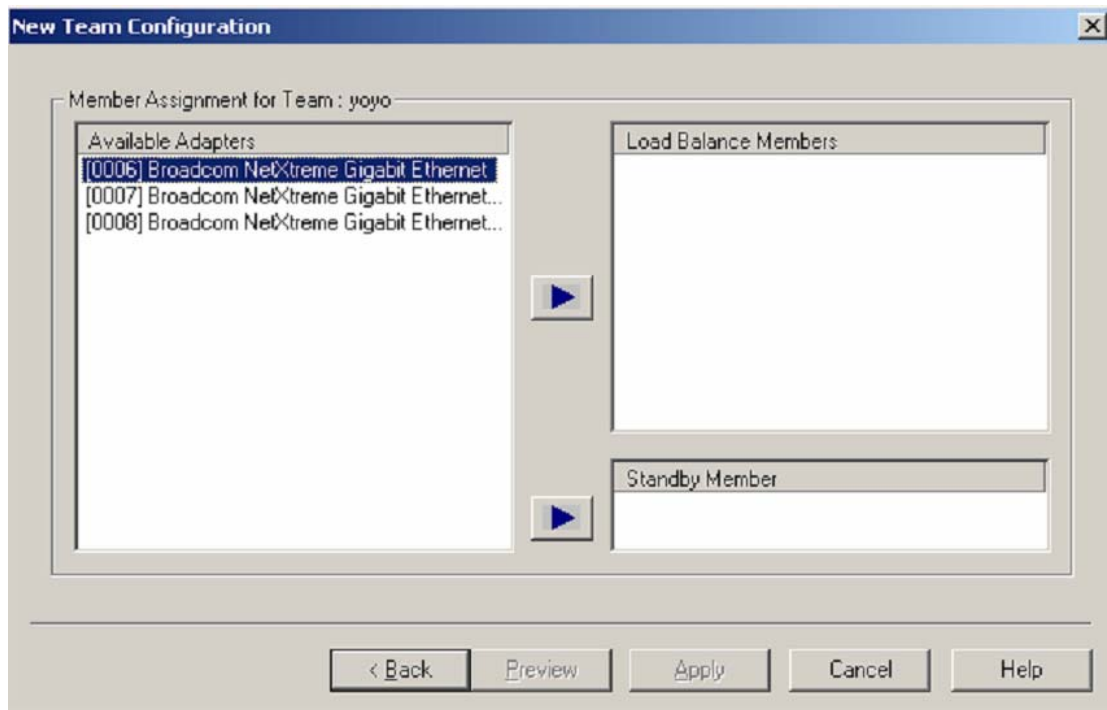
Generic Trunking is a switch-assisted teaming mode and requires configuring ports at both ends of the link: server interfaces and switch ports.

- **SLB (Auto-Fail back disable)**

SLB (Smart Load Balancing) provides for switch-independent, bi-directional, fault-tolerant teaming and load balancing.

### 1.3.4 Step4

Choose the available adapters to Load Balance Members or Standby Member.



- **Load Balance Members** groups the adapter into a Load Balancing team.
- **Standby Member** adapter is idle until a failover event (for example, loss of link occurs) while primary member is handling all incoming and outgoing traffic.



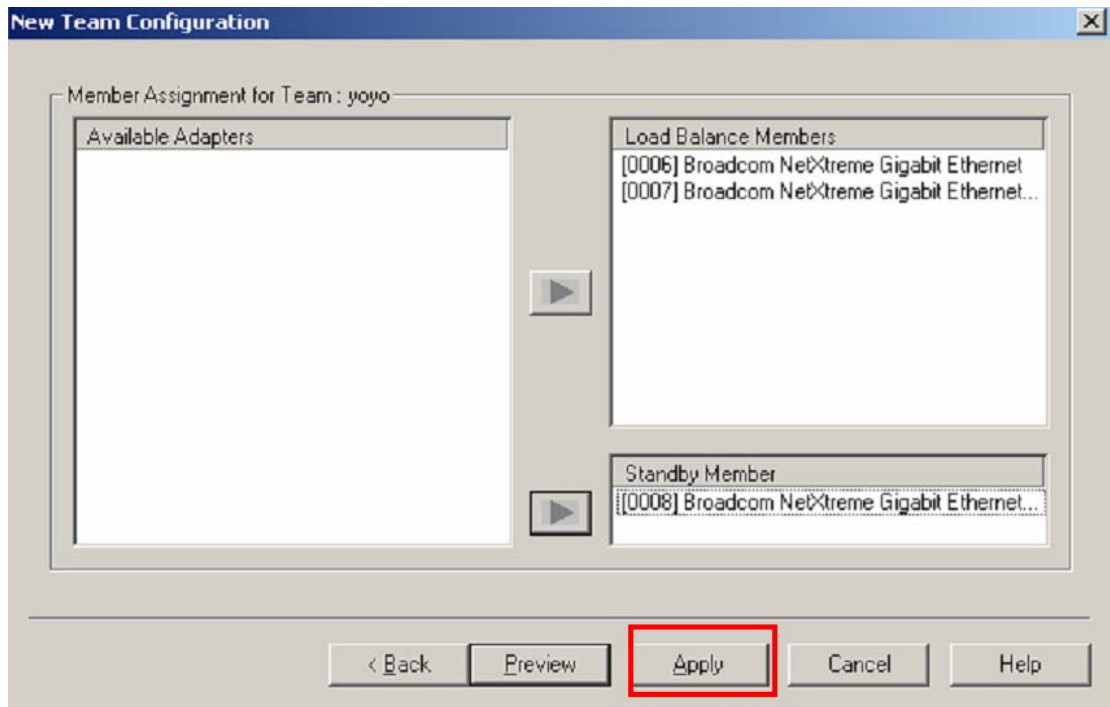
Tip: Teaming is only fully supported by server controllers, such as Broadcom 5721, 5722 etc. 5754, 5755, 5753 are client controllers, do not support teaming, it will report the error below if you try to build a team.





### 1.3.5 Step5

Add the adapters to Load Balance Members or Standby Member. Click Apply to continue.



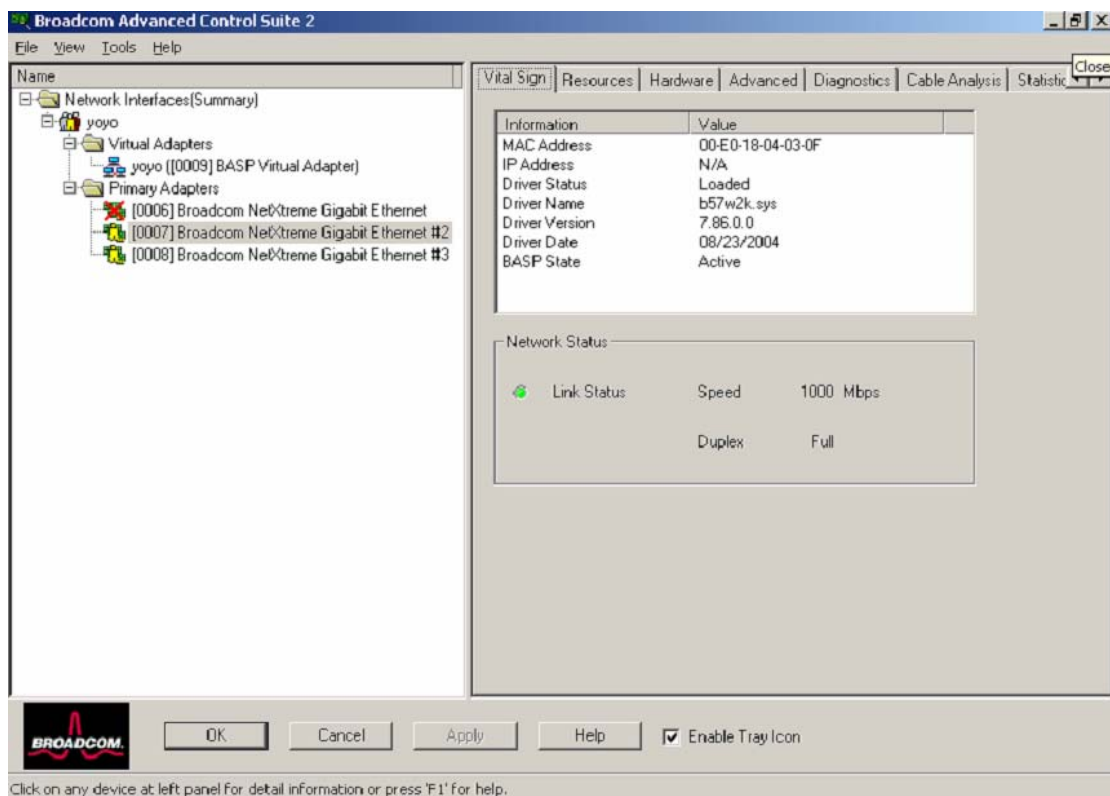
### 1.3.6 Step6

Click Yes to continue.



### 1.3.7 Step7

The result of teaming



---

## Reference

### Chapter 1

Broadcom Corporation: [www.broadcom.com](http://www.broadcom.com)

## Trademark Acknowledgement

Broadcom is a registered trademark of Broadcom Corporation. All other brand and product names may be trademarks of their respective companies.