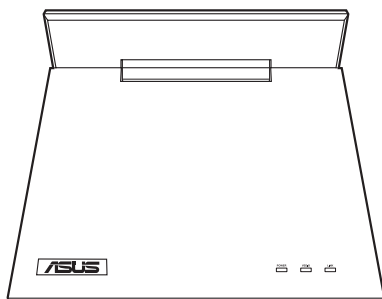
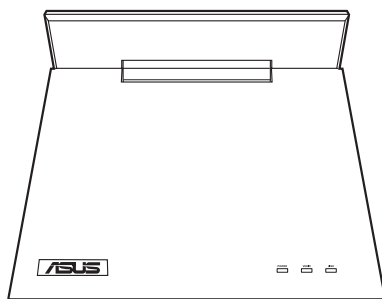




BR-HD3 Wireless HDMI Kit



ASUS BR-HD3 receiver



ASUS BR-HD3 transmitter

Supplementary Guide

Setting up PS3 and XBox to 1080i output



Before using the BR-HD3 Wireless HDMI Kit, ensure that your PS3 or XBox 360's screen resolution is set to **1080i**. Refer to the following sections for more details.

Setting up PS3 to 1080i output

To set up PS3 to 1080i output:

1. Using an HDMI cable, connect the PS3 to a high-definition external display.
2. Go to **My PS3 > System Settings > Display > Video output settings > HDMI > Customer**, then choose **1080i** or **720P**.
3. Turn off the PS3.
4. Connect the HDMI transmitter to the PS3 and the HDMI receiver to the external display.
5. Turn on all the devices.

Setting up XBox 360 to 1080i output

1. Using an HDMI cable, connect the XBox 360 to a high-definition external display.
2. Go to **My XBOX > System Settings > Console Settings > Display > HDTV Settings**, then choose **1080i** or **720P**.
3. Turn off the XBox 360.
4. Using the bundled HDMI cables, connect the HDMI transmitter to the XBox 360 and the HDMI receiver to the external display.
5. Turn on all the devices.

Setting up your computer to 1080i output

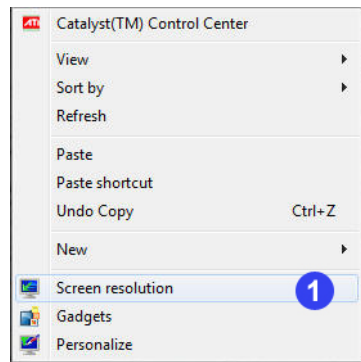


- Ensure that your computer is connected to a high-definition external display using an HDMI cable.
- Before using the BR-HD3 Wireless HDMI Kit, ensure that your computer's screen resolution is set to **1080i**. Refer to the following sections for more details.

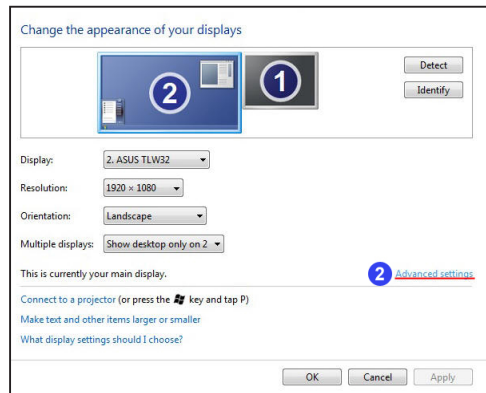
Using Windows® utility

To use Windows utility:

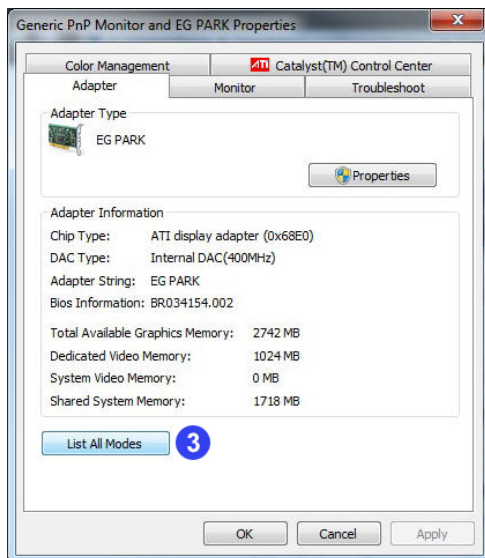
1. Right-click anywhere on the Windows desktop, and click **Screen resolution**.



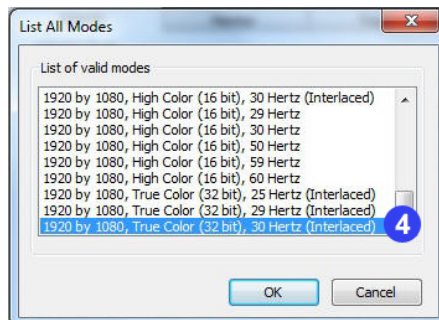
2. Click **Advanced settings**.



3. Click **List All Modes**.



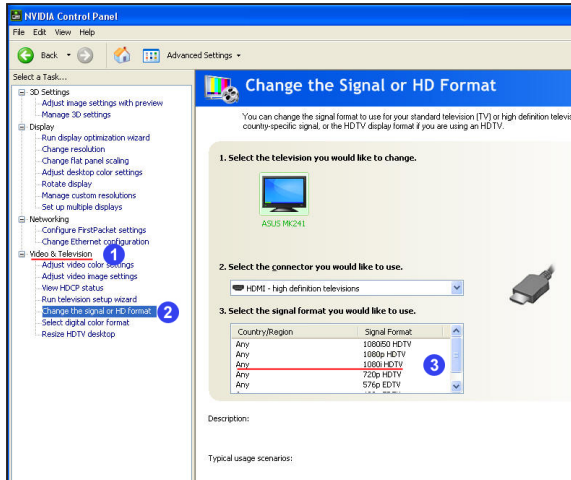
4. Select **1920 by 1080, True color (32 Bit), 30Hertz (Interlaced)**.



Using NVIDIA® utility

To use NVIDIA utility:

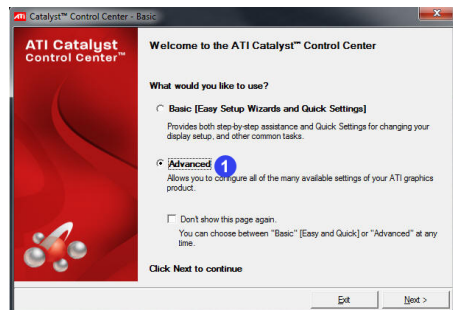
1. Launch the NVIDIA Control Panel. Select **Video & Television**.
2. Select **Change the signal or HD format**
3. Select **1080i HDTV** signal format.



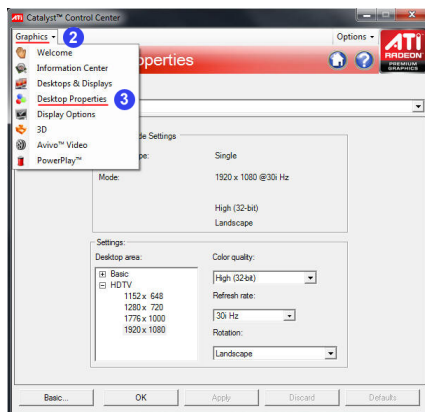
Using ATI® utility

To use ATI utility:

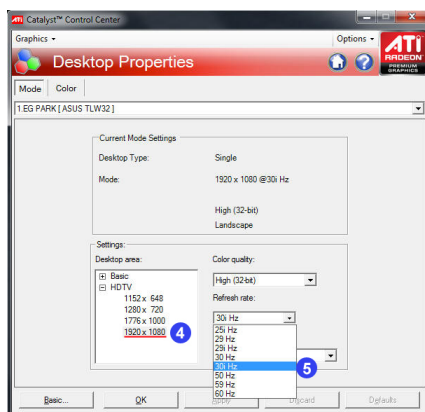
1. Launch the ATi Control Center. Select **Advanced**.



2. Click **Graphics**.
3. Select **Desktop Properties**.



4. From the Desktop area field, select **1920 X 1080**.
5. From the Refresh rate dropdown list, select **30i Hz**.



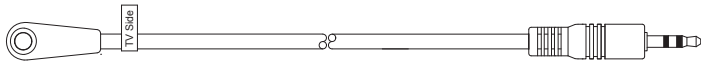
Troubleshooting

IR relay does not work.

1. Check the IR cable connection.
 - a. The part of the IR Blaster with the **Player side** sticker on it must be connected to the BR-HD3 transmitter.



- b. The part of the IR Receiver with the **TV side** sticker on it must be placed on the BR-HD3 receiver.



2. Ensure that the IR Receiver and IR Blaster are not placed directly facing each other.

Placing the IR Receiver and IR Blaster directly facing each other results to an infinite signal loop, which causes the IR relay function to fail.

Notices

REACH

Complying with the REACH (Registration, Evaluation, Authorisation, and Restriction of Chemicals) regulatory framework, we published the chemical substances in our products at ASUS REACH website at <http://green.asus.com/english/REACH.htm>.

Federal Communications Commission Statement

This device complies with Part 15 of the FCC Rules. Operation is subject to the following two conditions:

- This device may not cause harmful interference.
- This device must accept any interference received, including interference that may cause undesired operation.

This equipment has been tested and found to comply with the limits for a class B digital device, pursuant to part 15 of the FCC Rules. These limits are designed to provide reasonable protection against harmful interference in a residential installation.

This equipment generates, uses and can radiate radio frequency energy and, if not installed and used in accordance with the instructions, may cause harmful interference to radio communications. However, there is no guarantee that interference will not occur in a particular installation. If this equipment does cause harmful interference to radio or television reception, which can be determined by turning the equipment off and on, the user is encouraged to try to correct the interference by one or more of the following measures:

- Reorient or relocate the receiving antenna.
- Increase the separation between the equipment and receiver.
- Connect the equipment into an outlet on a circuit different from that to which the receiver is connected.
- Consult the dealer or an experienced radio/TV technician for help.



Caution: Any changes or modifications not expressly approved by the party responsible for compliance could void the user's authority to operate the equipment.

FCC Radiation Exposure Statement

This equipment complies with FCC radiation exposure limits set forth for an uncontrolled environment. This equipment should be installed and operated with minimum distance 20cm between the radiator & your body.

This transmitter must not be co-located or operating in conjunction with any other antenna or transmitter. 2.4GHz operation of this product in the U.S.A. is firmware-limited to channels 1 through 11.

Prohibition of Co-location

This device and its antenna(s) must not be co-located or operating in conjunction with any other antenna or transmitter.

Safety Information

To maintain compliance with FCC's RF exposure guidelines, this equipment should be installed and operated with minimum distance 20cm between the radiator and your body. Use on the supplied antenna.

Declaration of Conformity for R&TTE directive 1999/5/EC

Essential requirements – Article 3

Protection requirements for health and safety – Article 3.1a

Testing for electric safety according to EN 60950-1 has been conducted. These are considered relevant and sufficient.

Protection requirements for electromagnetic compatibility – Article 3.1b

Testing for electromagnetic compatibility according to EN 301 489-1 and EN 301 489-17 has been conducted. These are considered relevant and sufficient.

Effective use of the radio spectrum – Article 3.2

Testing for radio test suites according to EN 300 328- 2 has been conducted. These are considered relevant and sufficient.

CE Mark Warning

This is a Class B product, in a domestic environment, this product may cause radio interference, in which case the user may be required to take adequate measures.

DGT 警語

經型式認證合格之低功率射頻電機，非經許可，公司、商號或使用者均不得擅自變更頻率、

加大功率或變更原設計之特性及功能。

低功率射頻電機之使用不得影響飛航安全及干擾合法通信；經發現有干擾現象時，應立即

停用，並改善至無干擾時方得繼續使用。

前項合法通信，指依電信法規定作業之無線電通信。

低功率射頻電機須忍受合法通信或工業、科學及醫療用電波輻射性電機設備之干擾。

Contact information

Manufacturer:	ASUSTeK Computer Inc. Tel: +886-2-2894-3447 Address: No. 150, LI-DE RD., PEITOU, TAIPEI 112, TAIWAN
Authorised representative in Europe:	ASUS Computer GmbH Address: HARKORT STR. 21-23, 40880 RATINGEN, GERMANY
Authorised distributors in Turkey:	BOGAZICI BIL GISAYAR SAN. VE TIC. A.S. Tel: +90 212 3311000 Address: AYAZAGA MAH. KEMERBURGAZ CAD. NO.10 AYAZAGA/ISTANBUL
	INDEX BILGISAYAR SISTEMLERI MUHENDISLIK SAN. VE TIC. A.S. Tel: +90 212 3312121 Address: AYAZAGA MAH: CENDERE YOLU NO:9 AYAZAGA/ISTANBUL

EEE Yönetmeliğine Uygundur