



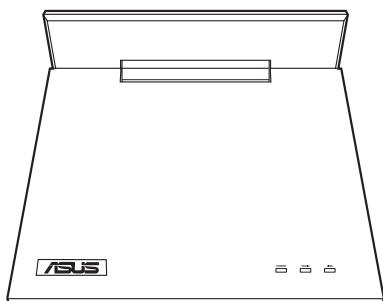
Index

1.	English	1
2.	Français	8
3.	Deutsch	15
4.	Italiano.....	22
5.	Русский	29
6.	Español	36
7.	Čeština	43
8.	Nederlands	50
9.	Português.....	57
10.	繁體中文.....	64
11.	ไทย.....	71
12.	Türkçe	78
13.	Notice	85

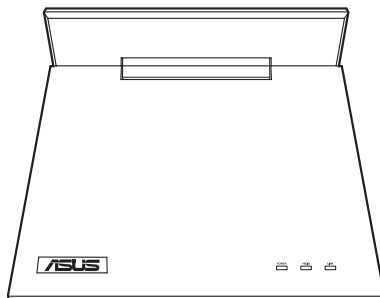




BR-HD3 Wireless HDMI Kit



ASUS BR-HD3 receiver



ASUS BR-HD3 transmitter

Supplementary Guide

E5328 / January 2010
First Edition





Setting up PS3 and XBox to 1080i output



Before using the BR-HD3 Wireless HDMI Kit, ensure that your PS3 or XBox 360's screen resolution is set to **1080i**. Refer to the following sections for more details.

Setting up PS3 to 1080i output

To set up PS3 to 1080i output:

1. Using an HDMI cable, connect the PS3 to a high-definition external display.
2. Go to **My PS3 > System Settings > Display > Video output settings > HDMI > Customer**, then choose **1080i** or **720P**.
3. Turn off the PS3.
4. Connect the HDMI transmitter to the PS3 and the HDMI receiver to the external display.
5. Turn on all the devices.

Setting up XBox 360 to 1080i output

1. Using an HDMI cable, connect the XBox 360 to a high-definition external display.
2. Go to **My XBOX > System Settings > Console Settings > Display > HDTV Settings**, then choose **1080i** or **720P**.
3. Turn off the XBox 360.
4. Using the bundled HDMI cables, connect the HDMI transmitter to the XBox 360 and the HDMI receiver to the external display.
5. Turn on all the devices.



Setting up your computer to 1080i output

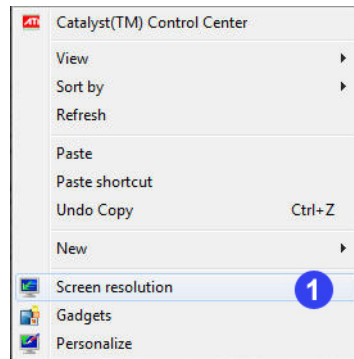


- Ensure that your computer is connected to a high-definition external display using an HDMI cable.
- Before using the BR-HD3 Wireless HDMI Kit, ensure that your computer's screen resolution is set to **1080i**. Refer to the following sections for more details.

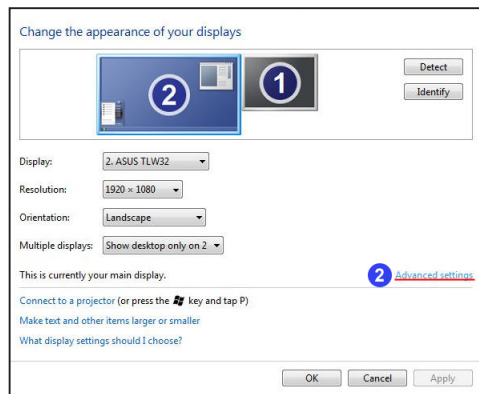
Using Windows® utility

To use Windows utility:

1. Right-click anywhere on Windows desktop, and click **Screen resolution**.

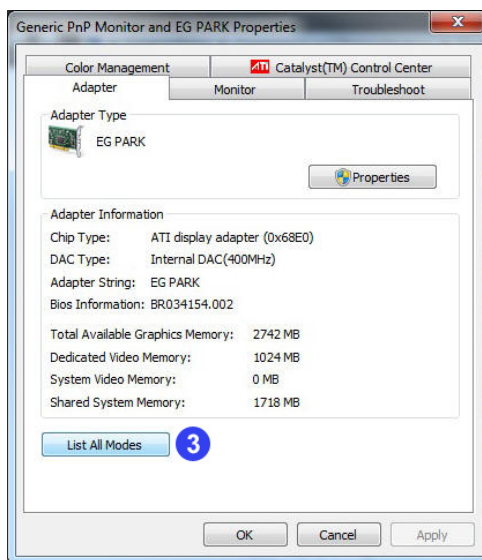


2. Click **Advanced settings**.

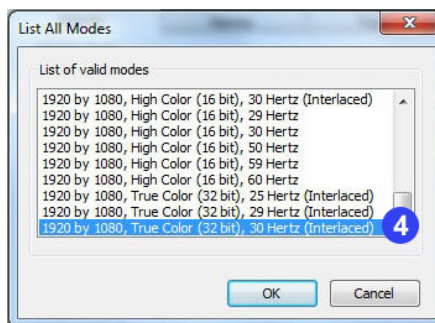




3. Click **List All Modes**.



4. Select **1920 by 1080, True color (32 Bit), 30Hertz (Interlaced)**.

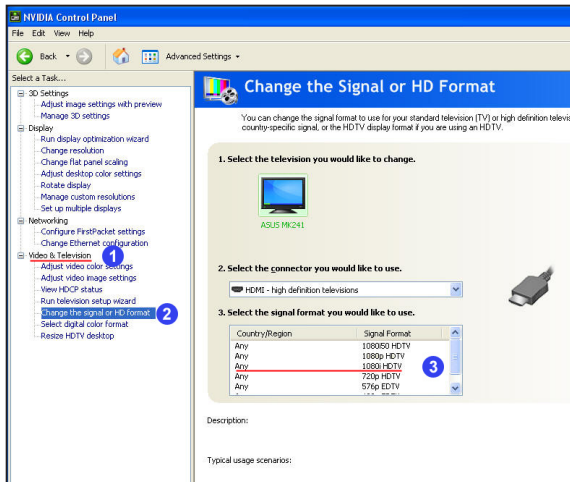




Using NVIDIA® utility

To use NVIDIA utility:

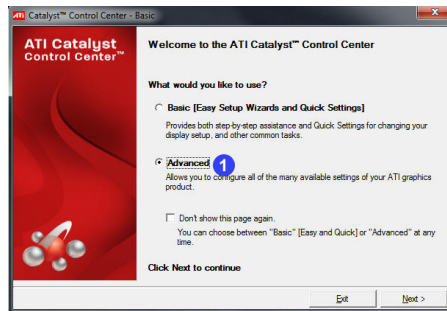
1. Launch the NVIDIA Control Panel. Select **Video &Television**.
2. Select **Change the signal or HD format**
3. Select **1080i HDTV** signal format.



Using ATI® utility

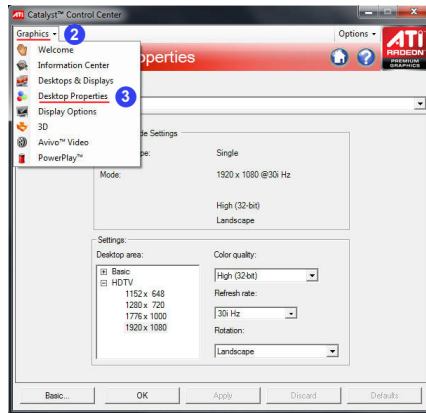
To use ATI utility:

1. Launch the ATi Control Center. Select **Advanced**.

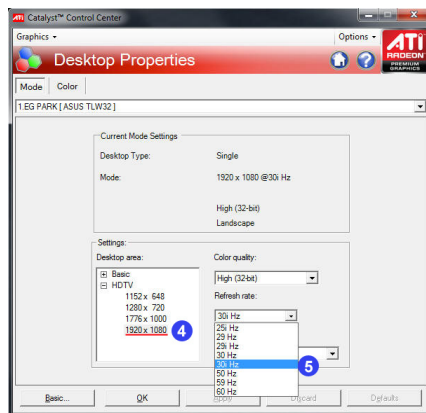




2. Click **Graphics**.
3. Select **Desktop Properties**.



4. From the Desktop area field, select **1920 X 1080**.
5. From the Refresh rate dropdown list, select **30i Hz**.





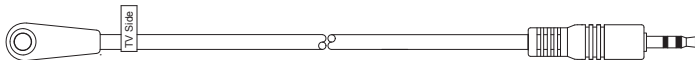
Troubleshooting

IR relay does not work.

1. Check the IR cable connection.
 - a. The part of the IR Blaster with the **Player side** sticker on it must be connected to the BR-HD3 transmitter.



- b. The part of the IR Receiver with the **TV side** sticker on it must be placed on the BR-HD3 receiver.

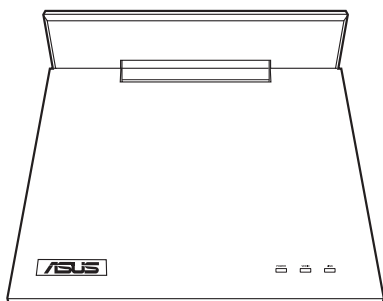


2. Ensure that the IR Receiver and IR Blaster are not placed directly facing each other.

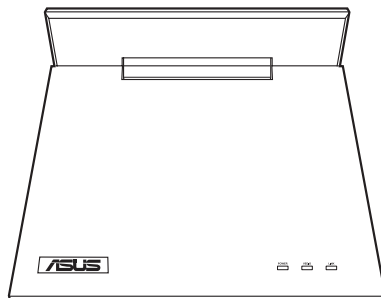
Placing the IR Receiver and IR Blaster directly facing each other results to an infinite signal loop, which causes the IR relay function to fail.



Kit HDMI sans fil BR-HD3



Récepteur ASUS BR-HD3



Émetteur ASUS BR-HD3

Guide complémentaire

F5328 / Janvier 2010
Première édition





Configurer une PS3/XBox en sortie 1080i



Avant d'utiliser le kit HDMI sans fil BR-HD3, assurez-vous que la résolution de votre PS3 ou Xbox 360 est définie sur **1080i**. Référez-vous aux sections suivantes pour plus de détails.

Sortie 1080i sur PS3

Pour configurer la PS3 sur une sortie vidéo de 1080i :

1. À l'aide d'un câble HDMI, connectez la PS3 à un périphérique d'affichage HD.
2. Sélectionnez **Paramètres > Paramètres affichage > Paramètres de sortie vidéo > HDMI > Personnalisé**, puis sélectionnez **1080i** ou **720P**.
3. Éteignez la PS3.
4. Connectez l'émetteur HDMI à la PS3 et le récepteur au périphérique d'affichage.
5. Allumez tous les périphériques.

Sortie 1080i sur Xbox 360

1. À l'aide d'un câble HDMI, connectez la Xbox 360 à un périphérique d'affichage HD.
2. Sélectionnez **Ma Xbox > Paramètres système > Paramètres de la console > Affichage > Paramètres TVHD**, puis sélectionnez **1080i** ou **720P**.
3. Éteignez la Xbox 360.
4. Avec les câbles HDMI fournis, connectez l'émetteur HDMI à la Xbox 360 et le récepteur HDMI au périphérique d'affichage.
5. Allumez tous les périphériques.



Configurer votre PC en sortie 1080i



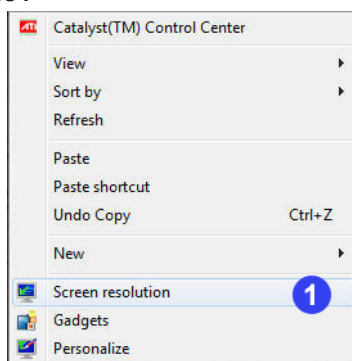
- Vérifiez que votre ordinateur est connecté à un périphérique d'affichage HD via un câble HDMI.
- Avant d'utiliser le kit HDMI sans fil BR-HD3, assurez-vous que la résolution de votre écran est définie sur **1080i**. Référez-vous à la section suivante pour plus de détails.

Français

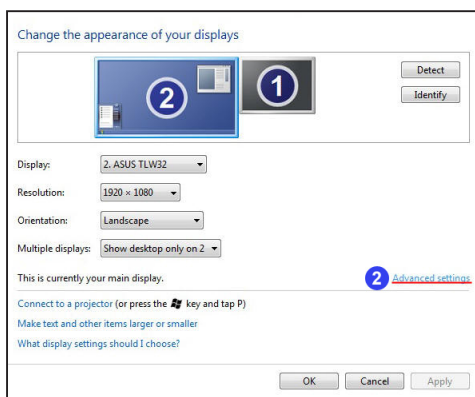
Utiliser l'utilitaire Windows®

Pour utiliser l'utilitaire d'affichage Windows :

1. Faites un clic droit sur le Bureau de Windows, puis cliquez sur **Résolution d'écran**.

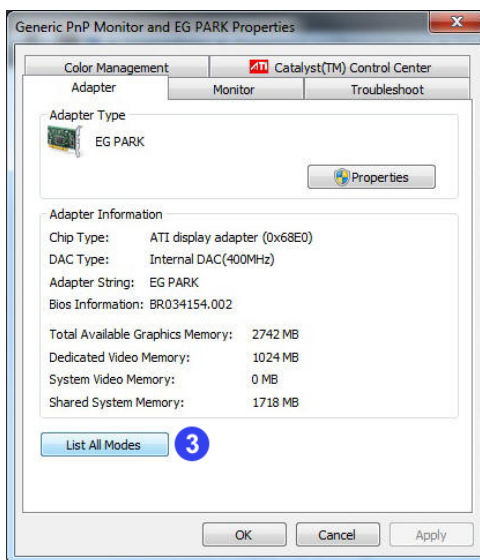


2. Cliquez sur **Paramètres avancés**.

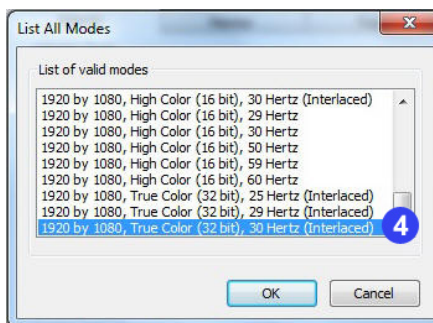




3. Cliquez sur **Lister tous les modes**.



4. Sélectionnez **1920 x 1080, Couleurs vraies (32 bits), 30Hertz (Intrelacé)**.



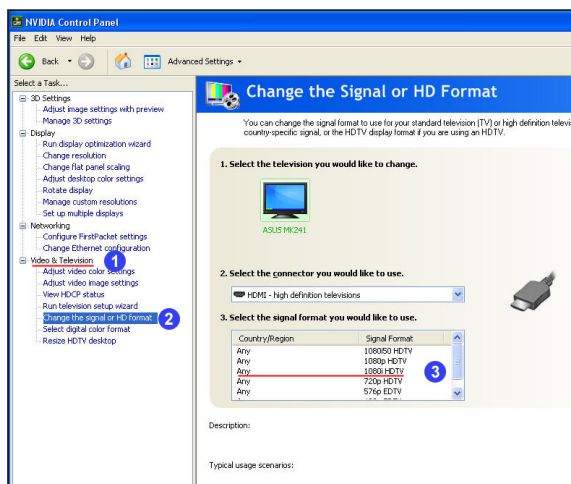


Utiliser l'utilitaire NVIDIA®

Pour utiliser l'utilitaire d'affichage NVIDIA :

1. Ouvrez le Panneau de contrôle NVIDIA. Sélectionnez **Video & Television** (Vidéo & Télévision).
2. Sélectionnez **Change the signal or HD format** (Modifier le format du signal ou HD).
3. Sélectionnez le format **1080i HDTV** (HDTV 1080i).

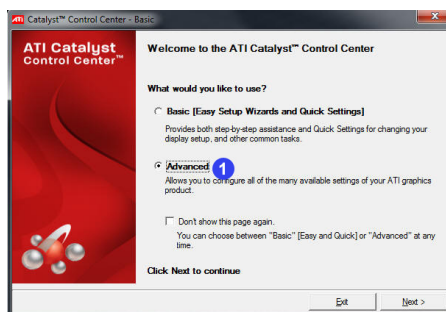
Français



Utiliser l'utilitaire ATI®

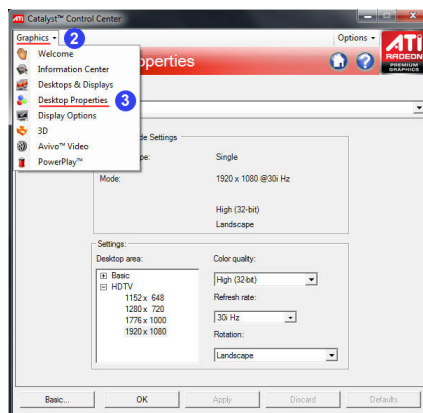
Pour utiliser l'utilitaire d'affichage ATI :

1. Ouvrez l'utilitaire ATI Control Center. Sélectionnez **Advanced** (Avancé).



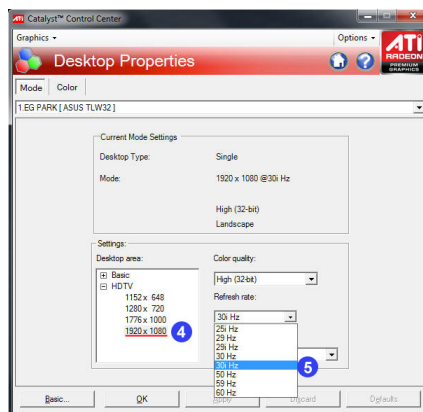


2. Cliquez sur **Graphics** (Graphiques)
3. Sélectionnez **Desktop Properties** (Propriétés du Bureau).



Français

4. Dans le champ **Desktop** (Bureau), sélectionnez **1920 X 1080**.
5. Dans le menu déroulant **Refresh rate** (Taux de rafraîchissement), sélectionnez **30i Hz**.





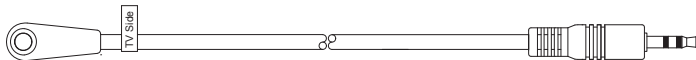
Dépannage

Le relais infrarouge ne fonctionne pas.

1. Vérifiez la connexion du câble du relais infrarouge.
 - a. L'extrémité de câble de l'émetteur infrarouge comportant l'étiquette **Player side** doit être connectée à l'émetteur BR-HD3.



- b. L'extrémité de câble du récepteur infrarouge comportant l'étiquette **TV side** doit être connectée au récepteur BR-HD3.

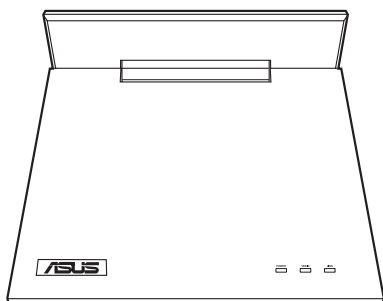


2. Assurez-vous que le récepteur et l'émetteur infrarouge ne soient pas directement placés face à face.

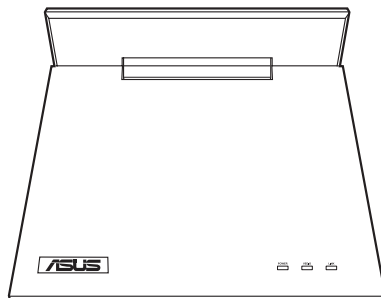
Placer le récepteur et l'émetteur infrarouge face à face créera une boucle du signal infinie, ce qui empêchera le relais infrarouge de fonctionner.



BR-HD3 Wireless HDMI Kit



ASUS BR-HD3 Empfänger



ASUS BR-HD3 Transmitter

Ergänzungshandbuch

G5328 / Februar 2010
Erste Ausgabe





PS3 und XBox für 1080i-Ausgabe einrichten



Bevor Sie den BR-HD3 Wireless HDMI Kit einsetzen, sollte Ihre PS3 oder XBox 360 Auflösung auf **1080i** gestellt sein. Beziehen Sie sich auf folgende Abschnitte für weitere Details.

PS3 für 1080i-Ausgabe einrichten

So bereiten Sie eine PS3 für die 1080i-Ausgabe vor:

1. Verbinden Sie die PS3 mit einem externen High-Definition Bildschirm mithilfe eines HDMI-Kabels.
2. Gehen Sie zu **System Settings (Systemeinstellungen) > Display (Anzeige) > Video output settings (Videoausgabe-Einstellungen) > HDMI > Customer** und wählen Sie **1080i** oder **720P**.
3. Schalten Sie die PS3 aus.
4. Verbinden Sie den HDMI-Transmitter mit der PS3 und den HDMI-Empfänger mit dem externen Bildschirm.
5. Schalten Sie alle Geräte wieder ein.

XBox 360 für 1080i-Ausgabe einrichten

1. Verbinden Sie die XBox 360 mit einem externen High-Definition Bildschirm mithilfe eines HDMI-Kabels.
2. Gehen Sie zu **My XBOX > System Settings (Systemeinstellungen) > Console Settings (Konsoleneinstellungen) > Display (Anzeige) > HDTV Settings (HDTV-Einstellungen)** und wählen Sie **1080i** oder **720P**.
3. Schalten Sie die XBox 360 aus.
4. Mithilfe der gebündelten HDMI-Kabeln, verbinden Sie den HDMI-Transmitter mit der XBox 360 und den HDMI-Empfänger mit dem externen Bildschirm.
5. Schalten Sie alle Geräte wieder ein.



Ihren Computer für 1080i-Ausgabe einrichten

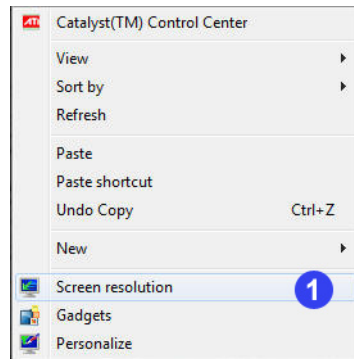


- Stellen Sie sicher, dass Ihr Computer mit einem externen High-Definition Bildschirm mithilfe eines HDMI-Kabels verbunden ist.
- Bevor Sie den BR-HD3 Wireless HDMI Kit einsetzen, sollte die Bildschirmauflösung Ihres Computers auf **1080i** gestellt sein. Beziehen Sie sich auf folgende Abschnitte für weitere Details.

Windows® Programm

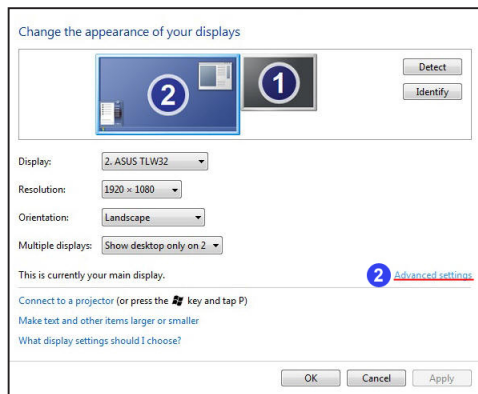
In Windows Programm:

1. Klicken Sie mit der rechten Maustaste irgendwo auf dem Desktop und wählen Sie **Screen Resolution (Bildschirmauflösung)**.



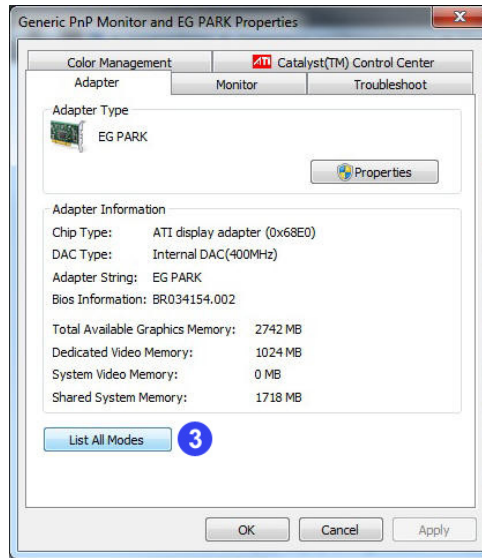
Deutsch

2. Klicken Sie auf **Advanced settings (Erweiterte Einstellungen)**.

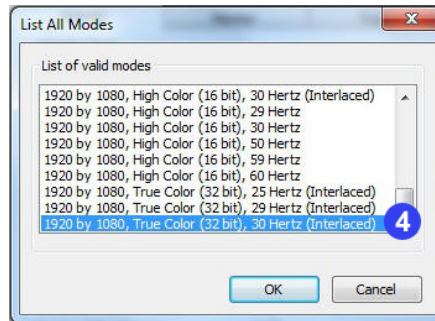




3. Klicken Sie auf **List All Modes (Alle Modi Anzeigen)**.



4. Wählen Sie **1920 by 1080, True color (32 Bit), 30Hertz (Interlaced)**.

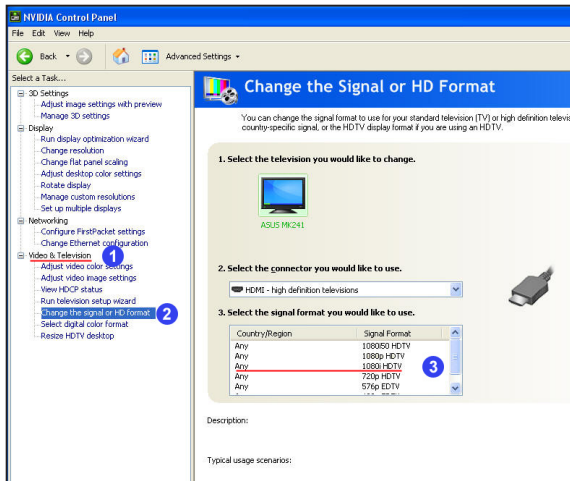




NVIDIA®-Anwendung

In der NVIDIA-Anwendung:

1. Starten Sie die NVIDIA-Steuerung. Wählen Sie **Video & Television**.
2. Wählen Sie **Change the signal or HD format (Signal oder HD-Format ändern)**.
3. Wählen **1080i HDTV** Signalformat.

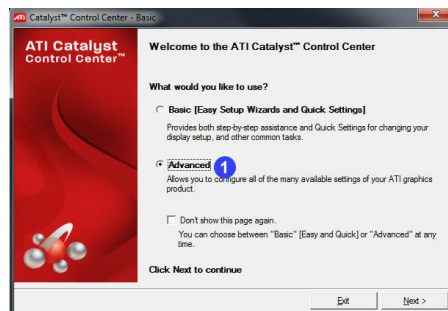


Deutsch

ATI®-Anwendung

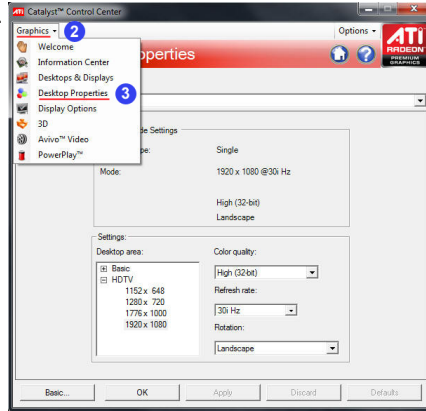
In der ATI-Anwendung:

1. Starten Sie das ATi Control Center. Wählen Sie **Advanced (Erweitert)**.

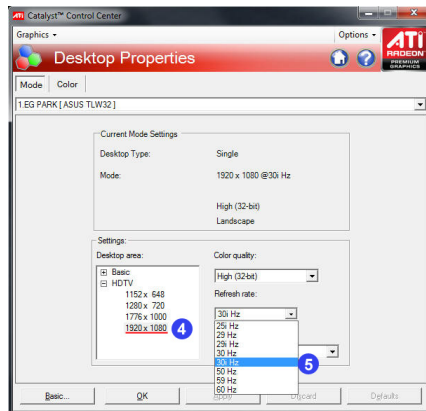




2. Klicken Sie auf **Graphics (Grafik)**.
3. Wählen Sie **Desktop Properties (Desktop-Eigenschaften)**.



4. Im Desktop Area (Desktop-Umgebung) Feld, wählen Sie **1920 X 1080**.
5. In der Refresh rate (Aktualisierungsrate) Dropdown-Liste, wählen Sie **30i Hz**.





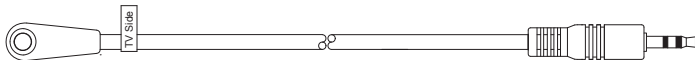
Problembehandlung

Infrarot Relais (IR) funktioniert nicht.

1. Prüfen Sie die IR-Kabelverbindung.
 - a. Der Teil des IR-Blasters mit der **Player side** Markierung muss an den BR-HD3-Transmitter angeschlossen werden.



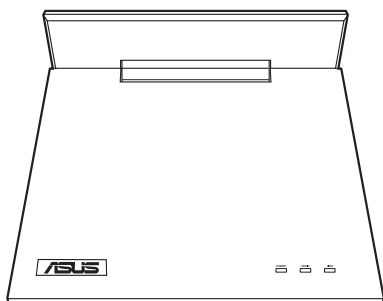
- b. Der Teil des IR-Empfängers mit der **TV side** Markierung muss auf den BR-HD3-Empfänger platziert werden.



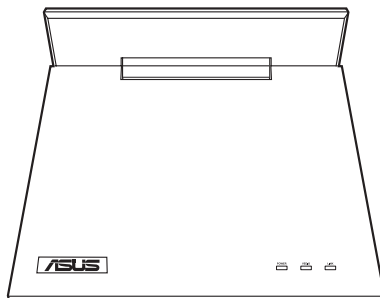
2. Stellen Sie sicher, dass der IR-Empfänger und der IR-Blaster sich nicht direkt gegenüberstehen.
Das direkte (gegenüber) Platzieren des IR-Empfängers/Blasters wird zu einer Endlosschleife führen, was zum Versagen des IR-Relais-Betriebs führt.



Kit Wireless HDMI BR-HD3



Ricevitore ASUS BR-HD3



Trasmittitore ASUS BR-HD3

Guida Supplementare

I5328 / Gennaio 2010
Prima Edizione





Impostazione di PS3 e XBox sull'Uscita 1080i



Prima di utilizzare il Kit Wireless HDMI BR-HD3, assicurarsi che la risoluzione schermo della PS3 o della XBox 360 sia impostata su **1080i**. Per i particolari, consultare i paragrafi qui di seguito.

Impostazione della PS3 sull'uscita 1080i

Per impostare la PS3 sull'uscita 1080i:

1. Mediante un cavo HDMI, collegare la PS3 ad uno schermo esterno ad alta definizione.
2. Cliccare **My PS3 > System Settings > Display > Video output settings > HDMI > Customer**, quindi scegliere **1080i** o **720P**.
3. Spegnerne la PS3.
4. Collegare il trasmettitore HDMI alla PS3 e il ricevitore HDMI allo schermo esterno.
5. Accendere tutti i dispositivi.

Impostazione della XBox 360 sull'uscita 1080i

1. Mediante un cavo HDMI, collegare la XBox 360 ad uno schermo esterno ad alta definizione.
2. Cliccare **My XBOX > System Settings > Console Settings > Display > HDTV Settings**, quindi scegliere **1080i** o **720P**.
3. Spegnerne la XBox 360.
4. Mediante i cavi HDMI in dotazione, collegare il trasmettitore HDMI alla XBox 360 ed il ricevitore HDMI allo schermo esterno.
5. Accendere tutti i dispositivi.



Impostazione del Computer sull'Uscita 1080i

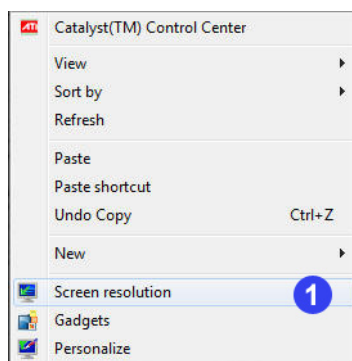


- Assicurarsi che il computer sia collegato ad uno schermo esterno ad alta definizione mediante un cavo HDMI.
- Prima di utilizzare il kit Wireless HDMI BR-HD3, assicurarsi che la risoluzione del computer sia impostata su **1080i**. Per i particolari, consultare i paragrafi qui di seguito.

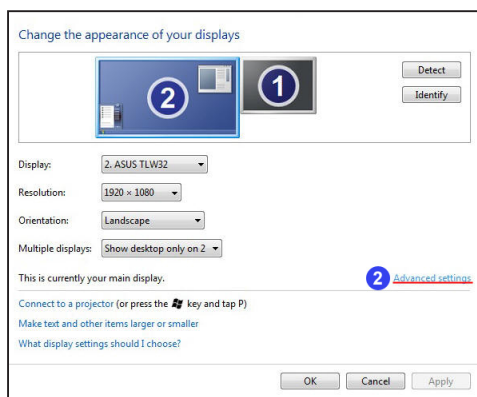
Utilità Windows®

Per utilizzare l'utilità Windows:

1. Con il tasto di destra del mouse, cliccare su un punto qualunque del desktop di Windows e poi selezionare **Screen resolution**.

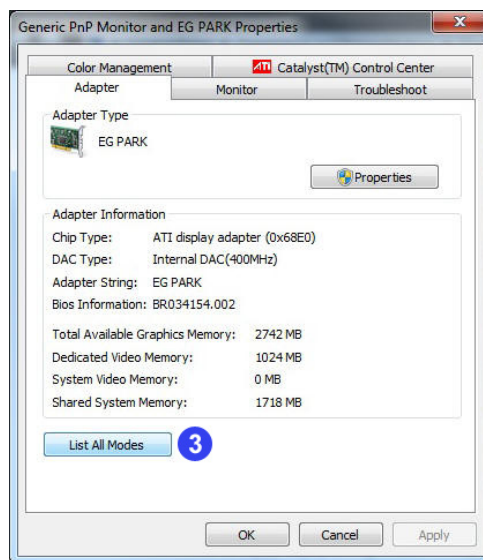


2. Cliccare **Advanced settings**.

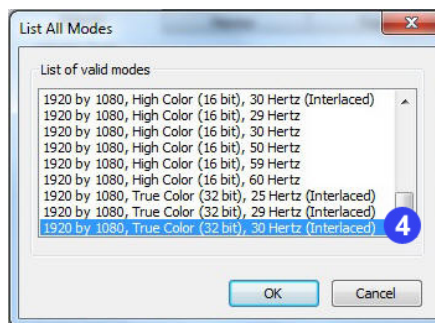




3. Premere il pulsante
List All Modes.



4. Selezionare **1920 by 1080, True color (32 Bit), 30Hertz (Interlaced).**

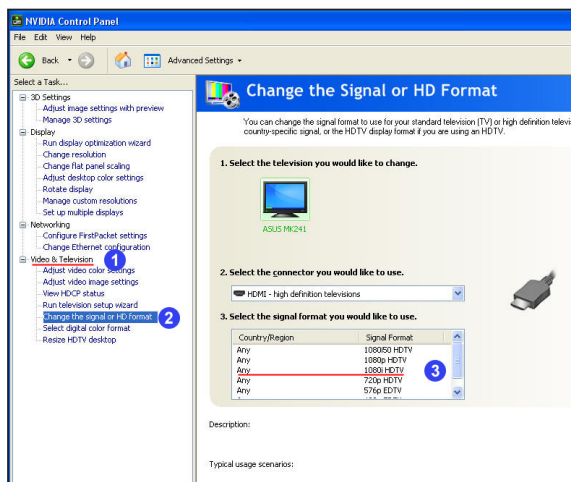




Utilità NVIDIA®

Per utilizzare l'utilità NVIDIA :

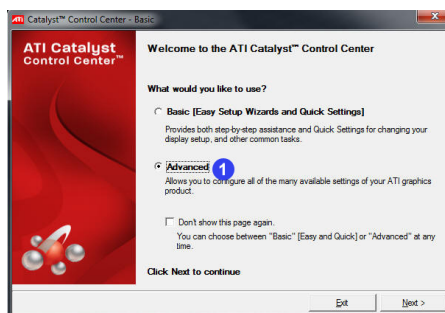
1. Aprire il pannello di controllo NVIDIA e selezionare **Video & Television**.
2. Selezionare **Change the signal or HD format**
3. Selezionare il formato segnale **1080i HDTV**.



Utilità ATI®

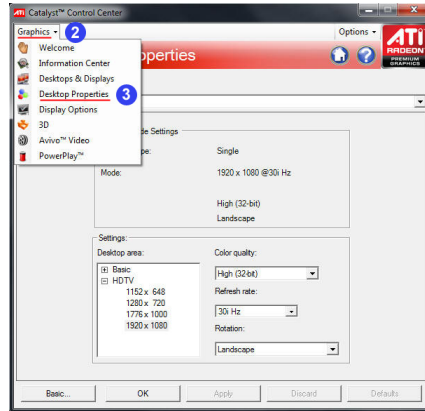
Per utilizzare l'utilità ATI:

1. Avviare ATI Control Center e selezionare **Advanced**.

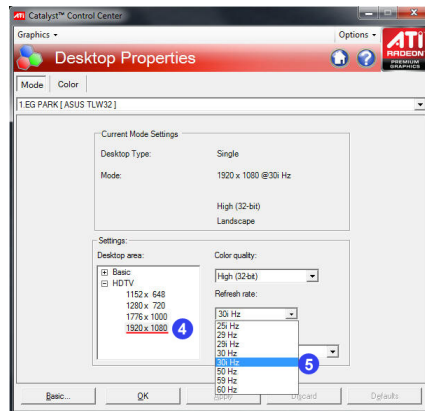




2. Cliccare **Graphics**.
3. Selezionare **Desktop Properties**.



4. Da Desktop area selezionare **1920 X 1080**.
5. Dall'elenco a discesa delle frequenze di aggiornamento, selezionare **30i Hz**.





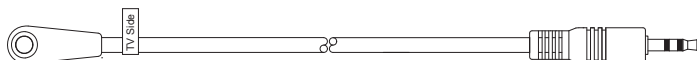
Risoluzione dei Problemi

Assenza di segnale fra ricevitore e trasmettitore.

1. Controllare la connessione IR.
 - a. La parte di IR Blaster con l'etichetta **Player side** deve essere collegata al trasmettitore BR-HD3.



- b. La parte del ricevitore IR con l'etichetta **TV side** deve essere posta sul ricevitore BR-HD3.

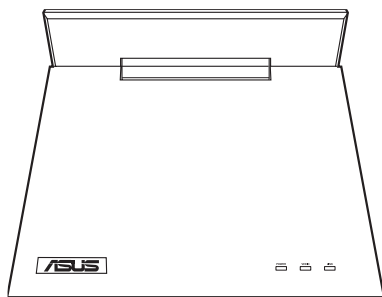


2. Assicurarsi che il ricevitore IR e IR Blaster non siano collocati direttamente uno di fronte all'altro.

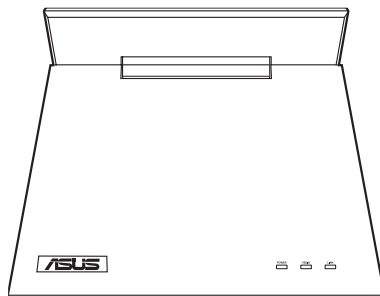
La collocazione del ricevitore IR in posizione frontale rispetto a IR Blaster produce un riverbero infinito del segnale con conseguenti problemi di trasmissione.



Беспроводный HDMI набор



ASUS BR-HD3 приемник



ASUS BR-HD3 передатчик

Вспомогательное руководство

R5328 / Январь 2010

Первая редакция





Настройка PS3 и XBox для разрешения 1080i



Перед использованием BR-HD3 проверьте, что разрешение экрана PS3 или XBox 360 установлено в **1080i**. Дополнительную информацию смотрите в следующих разделах.

Настройка PS3 для разрешения 1080i

Для настройки PS3 для разрешения 1080i:

1. Подключите PS3 к внешнему монитору с помощью HDMI кабеля.
2. Перейдите в **Настройки системы > Display > Video output settings > HDMI > Customer**, затем выберите **1080i** или **720P**.
3. Выключите PS3.
4. Подключите HDMI передатчик к PS3, а HDMI приемник к внешнему монитору.
5. Включите все устройства.

Настройка XBox для разрешения 1080i

1. Подключите XBox 360 к внешнему монитору с помощью HDMI кабеля.
2. Перейдите в **My XBOX > Настройки системы > Console Settings > Display > HDTV Settings**, затем выберите **1080i** или **720P**.
3. Выключите XBox 360.
4. Подключите HDMI передатчик к XBox 360, а HDMI приемник к внешнему монитору.
5. Включите все устройства.



Настройка компьютера для разрешения 1080i

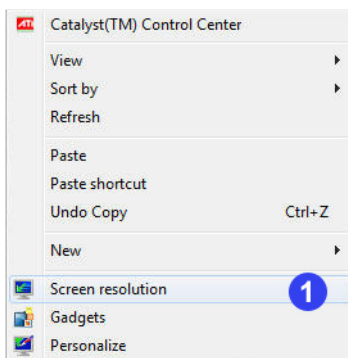


- Подключите Ваш компьютер к внешнему монитору с помощью HDMI кабеля.
- Перед использованием BR-HD3 проверьте, что разрешение экрана компьютера установлено в **1080i**. Дополнительную информацию смотрите в следующих разделах.

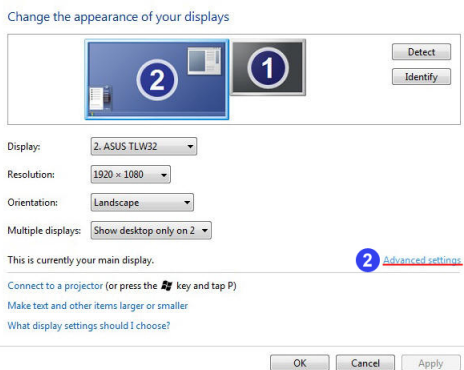
Использование утилиты для Windows

Для использования утилиты выполните следующее:

1. Щелкните правой кнопкой на свободном месте рабочего стола и выберите **Screen resolution**.

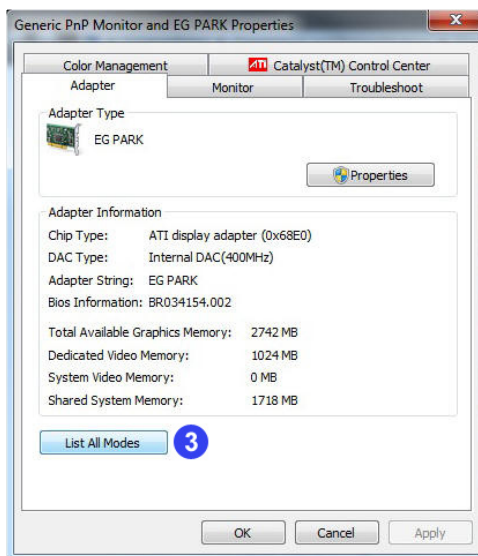


2. Нажмите **Advanced settings**.

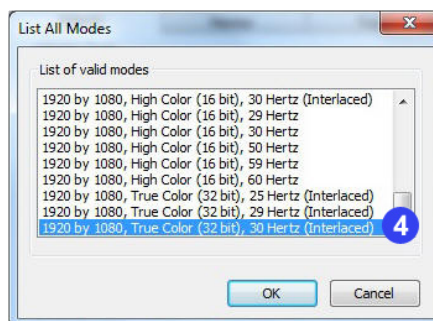




3. Нажмите **List All Modes**.



4. Выберите **1920 by 1080, True color (32 Bit), 30Hertz (Interlaced)**.

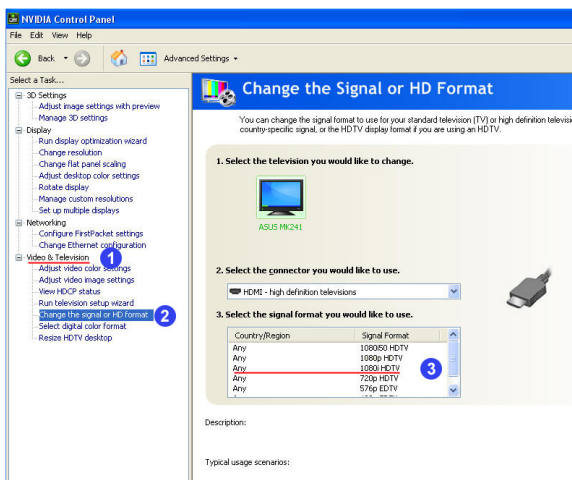




Использование утилиты NVIDIA

Для использования утилиты NVIDIA:

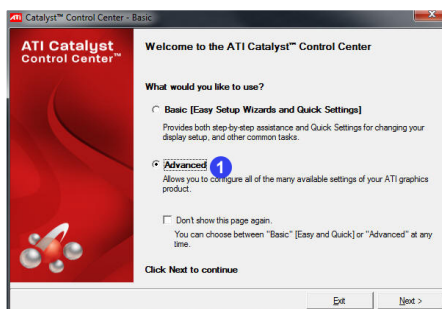
1. Запустите панель управления NVIDIA. Выберите **Video &Television**.
2. Выберите **Change the signal or HD format**
3. Выберите формат сигнала **1080i HDTV**.



Использование утилиты ATI

Для использования утилиты ATI:

1. Запустите панель управления ATI. Выберите **Advanced**.

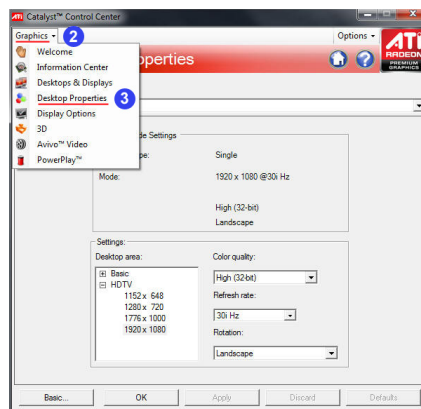


Русский

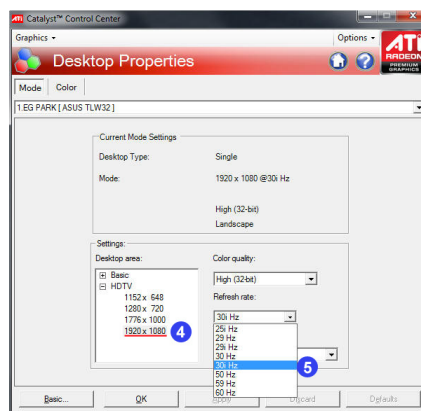




2. Нажмите **Graphics**.
3. Выберите **Desktop Properties**.



4. В поле Desktop area выберите **1920 X 1080**.
5. В списке Refresh rate выберите **30i Hz**.





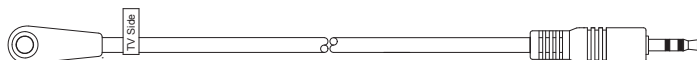
Устранение неисправностей

ИК связь не работает.

1. Проверьте подключение ИК кабеля.
 - a. ИК кабель с биркой **Player side** должен быть подключен к BR-HD3 передатчику.



- b. ИК кабель с биркой **TV side** должен быть подключен к BR-HD3 приемнику.

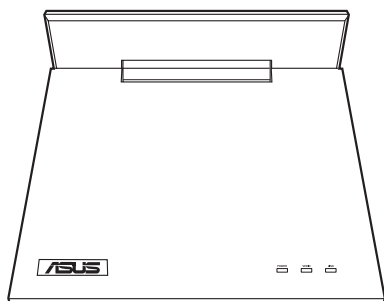


2. Проверьте, что ИК-приемник и ИК-передатчик не расположены друг напротив друга.

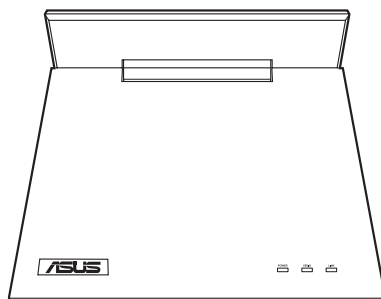
Размещение ИК-приемник и ИК-передатчик друг напротив друга приведет к заикливаюнию и невозможности передачи ИК-сигнала.



Kit HDMI inalámbrico BR-HD3



Receptor BR-HD3 ASUS



Transmisor BR-HD3 ASUS

Guía complementaria

S5328 / Enero de 2010
Primera edición





Configuración de una consola PS3 o Xbox en el modo de salida 1080i



Antes de usar el Kit HDMI inalámbrico BR-HD3, asegúrese de que la resolución de pantalla de la consola PS3 o Xbox 360 se encuentre configurada a **1080i**. Consulte las secciones siguientes si desea obtener una información más detallada..

Configuración de una consola PS3 en el modo de salida 1080i

Para configurar una consola PS3 en el modo de salida 1080i:

1. Conecte la consola PS3 a una pantalla externa de alta definición a través de un cable HDMI.
2. Acceda a **My PS3 (Mi PS3) > System Settings (Configuración del sistema) > Display (Pantalla) > Video output settings (Configuración de salida de vídeo) > HDMI > Customer (Cliente)** y, a continuación, seleccione **1080i** o **720P**.
3. Apague la consola PS3.
4. Conecte el transmisor HDMI a la consola PS3 y el receptor HDMI a la pantalla externa.
5. Encienda todos los dispositivos.

Configuración de una consola Xbox 360 en el modo de salida 1080i

1. Conecte la consola Xbox 360 a una pantalla externa de alta definición a través de un cable HDMI.
2. Acceda a **My XBOX (Mi XBOX) > System Settings (Configuración del sistema) > Console Settings (Configuración consola) > Display (Pantalla) > HDTV Settings (Configuración HDTV)** y, a continuación, seleccione **1080i** o **720P**.
3. Apague la consola Xbox 360.
4. Conecte el transmisor HDMI a la consola Xbox 360 y el receptor HDMI a la pantalla externa a través de los cables HDMI suministrados.
5. Encienda todos los dispositivos.



Configuración de un equipo informático en el modo de salida 1080i

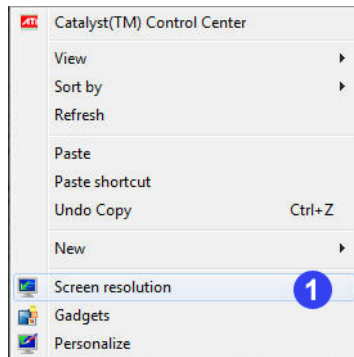


- Asegúrese de que el equipo esté conectado a una pantalla externa de alta definición a través de un cable HDMI.
- Antes de usar el Kit HDMI inalámbrico BR-HD3, asegúrese de que la resolución de pantalla del equipo se encuentre configurada a **1080i**. Consulte las secciones siguientes si desea obtener más información.

Uso de la utilidad de Windows®

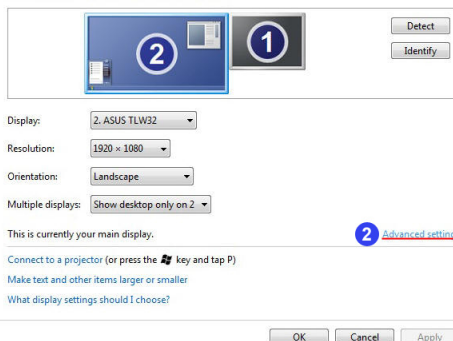
Si desea usar la utilidad de Windows:

1. Haga clic con el botón secundario del ratón en cualquier punto del escritorio de Windows y, a continuación, haga clic en **Screen resolution (Resolución de pantalla)**.



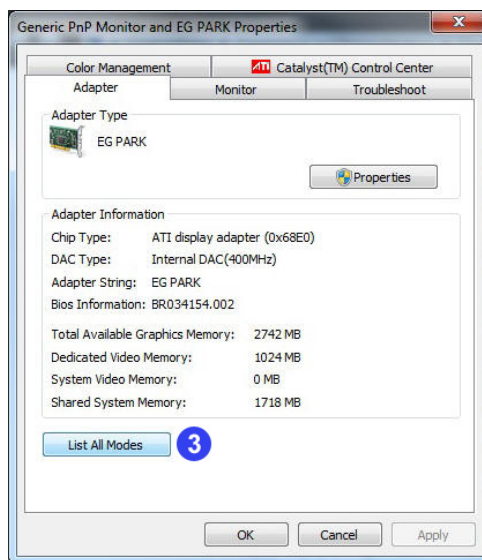
2. Haga clic en **Advanced settings (Configuración avanzada)**.

Change the appearance of your displays

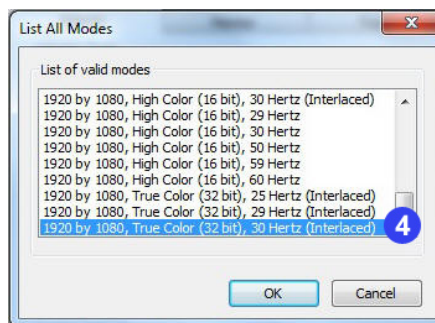




3. Haga clic en **List All Modes (Mostrar todos los modos)**.



4. Seleccione **1920 by 1080, True color (32 Bit), 30Hertz (Interlaced) (1920 x 1080, color verdadero (32 bits), 30 hercios (entrelazado))**.

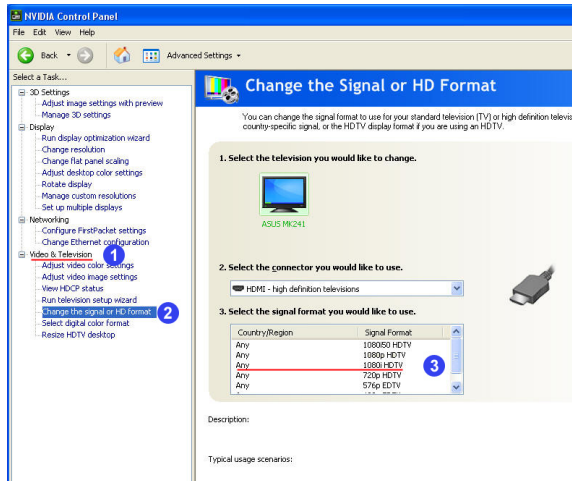




Uso de la utilidad NVIDIA®

Si desea usar la utilidad NVIDIA:

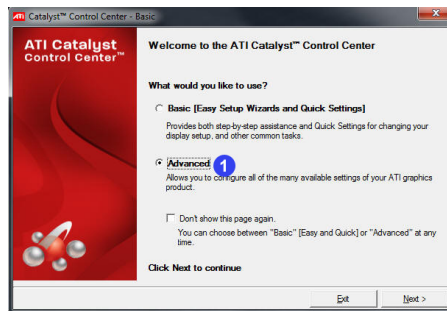
1. Inicie la aplicación NVIDIA Control Panel (Panel de control NVIDIA).
Seleccione **Video & Television (Video y televisión)**.
2. Seleccione **Change the signal or HD format (Cambiar la señal o el formato HD)**.
3. Seleccione el formato de señal **1080i HDTV**.



Uso de la utilidad ATI®

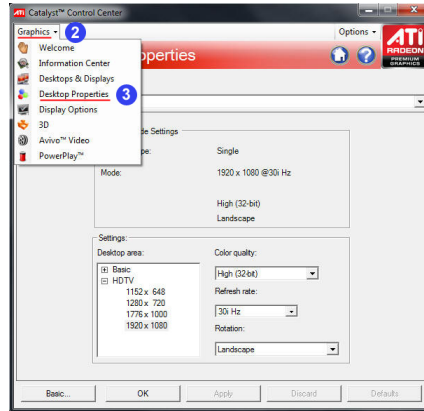
Si desea usar la utilidad ATI:

1. Inicie la aplicación ATI Control Center (Centro de control de ATI). Seleccione **Advanced (Avanzado)**.

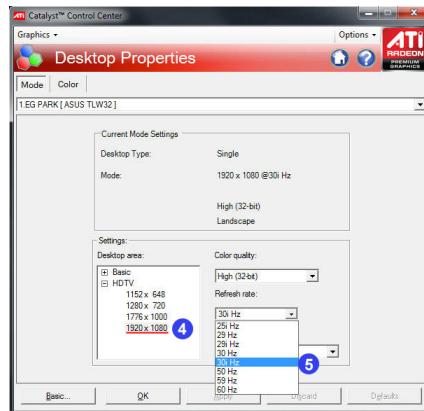




- Haga clic en **Graphics** (Gráficos).
- Seleccione **Desktop Properties** (Propiedades de escritorio).



- En el campo Desktop area (Área de escritorio), seleccione **1920 X 1080**.
- En la lista desplegable Refresh rate (Frecuencia de actualización), seleccione **30i Hz**.





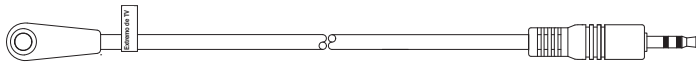
Resolución de problemas

La conexión IR no funciona.

1. Compruebe la conexión del cable IR.
 - a. La clavija del Emisor IR etiquetada con el adhesivo **Player side (Extremo de reproductor)** debe conectarse al transmisor BR-HD3.



- b. La clavija del Receptor IR etiquetada con el adhesivo **TV side (Extremo de TV)** debe conectarse al receptor BR-HD3.

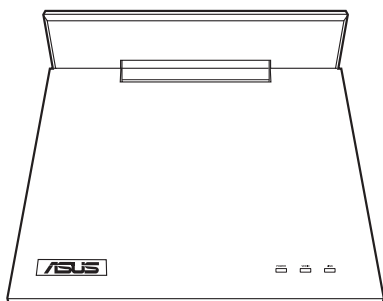


2. Asegúrese de no colocar el Receptor IR y el Emisor IR directamente uno frente a otro.

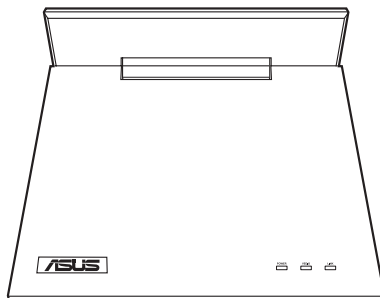
Si coloca el Receptor IR y el Emisor IR directamente uno frente a otro, se creará un bucle de señal infinito que provocará que el relé IR no funcione correctamente.



BR-HD3 bezdrátová HDMI sada



ASUS BR-HD3 přijímač



ASUS BR-HD3 vysílač

Doplňková příručka

CZ5328 / leden 2010
První vydání





Konfigurace PS3 a XBox na výstup 1080i



Před používáním BR-HD3 bezdrátové HDMI sady zkontrolujte, zda je rozlišení obrazovky vašeho PS3 nebo XBox 360 nastaveno na **1080i**. Další podrobnosti najdete v následujících částech.

Konfigurace PS3 na výstup 1080i

Pokyny pro konfiguraci PS3 na výstup 1080i:

1. Připojte PS3 k externímu zobrazovacímu zařízení o vysokém rozlišení pomocí kabelu HDMI.
2. Přejděte na **My PS3 (Moje PS3) > System Settings (Nastavení systému) > Display (Zobrazení) > Video output settings (Nastavení výstupu videa) > HDMI > Customer (Zákazník)** a potom zvolte **1080i** nebo **720P**.
3. Vypněte PS3.
4. Připojte HDMI vysílač k PS3 a HDMI přijímač k externímu zobrazovacímu zařízení.
5. Zapněte všechna zařízení.

Konfigurace XBox 360 na výstup 1080i

1. Připojte XBox 360 k externímu zobrazovacímu zařízení o vysokém rozlišení pomocí kabelu HDMI.
2. Přejděte na **My XBOX (Můj XBOX) > System Settings (Nastavení systému) > Console Settings (Nastavení konzole) > Display (Zobrazení) > HDTV Settings (Nastavení HDTV)** a potom zvolte **1080i** nebo **720P**.
3. Vypněte XBox 360.
4. Pomocí dodaných kabelů HDMI připojte HDMI vysílač k XBox 360 HDMI přijímač k externímu zobrazovacímu zařízení.
5. Zapněte všechna zařízení.



Konfigurace počítače na výstup 1080i



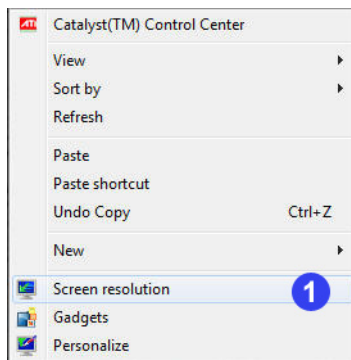
- Zkontrolujte, zda je váš počítač připojen k externímu zobrazovacímu zařízení o vysokém rozlišení pomocí kabelu HDMI.
- Před používáním BR-HD3 bezdrátové HDMI sady zkontrolujte, zda je rozlišení obrazovky vašeho počítače nastaveno na **1080i**. Další podrobnosti najdete v následujících částech.

Čeština

Používání nástroje Windows®

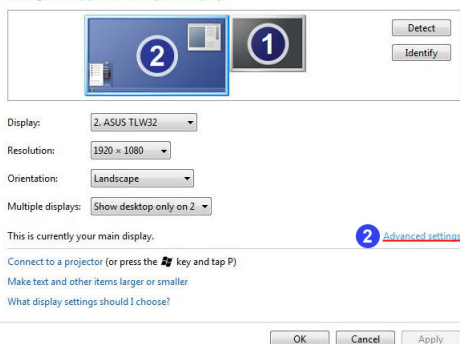
Pokyny pro používání nástroje Windows:

1. Klepněte pravým tlačítkem myši na libovolném místě na pracovní ploše Windows a klepněte na **Screen resolution (Rozlišení obrazovky)**.



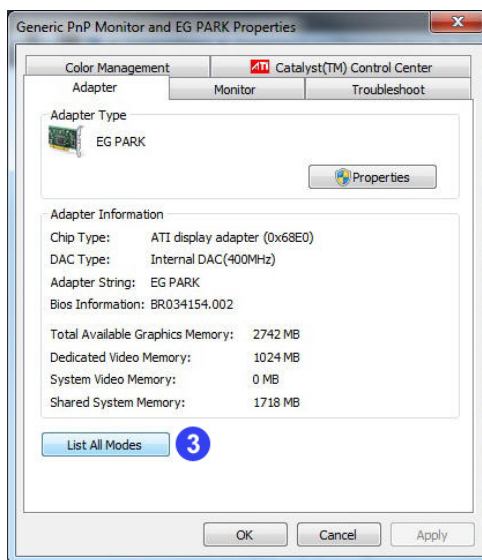
2. Klepněte na **Advanced settings (Upřesnit nastavení)**.

Change the appearance of your displays

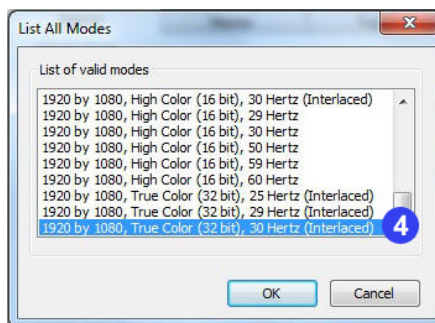




3. Klepněte na **List All Modes (Zobrazit všechny režimy)**.



4. Vyberte **1920 by 1080, True color (32 Bit), 30Hertz (Interlaced) (1920 x 1080, barva True (32 bitů), 30 Hz (prokládaný))**.

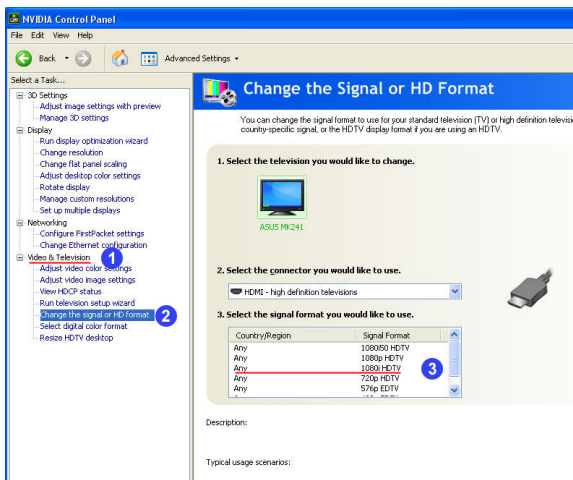




Používání nástroje NVIDIA®

Pokyny pro používání nástroje NVIDIA:

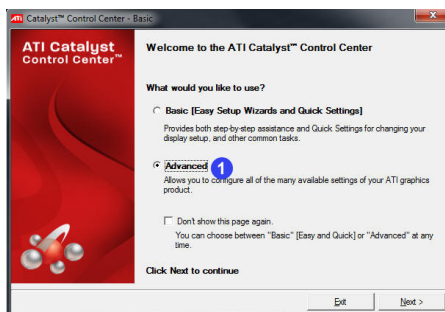
1. Spustíte NVIDIA Control Panel (Ovládací panel NVIDIA). Vyberte **Video & Television (Video a televize)**.
2. Vyberte **Change the signal or HD format (Změnit signál nebo HD formát)**.
3. Vyberte formát signálu **1080i HDTV**.



Používání nástroje ATI®

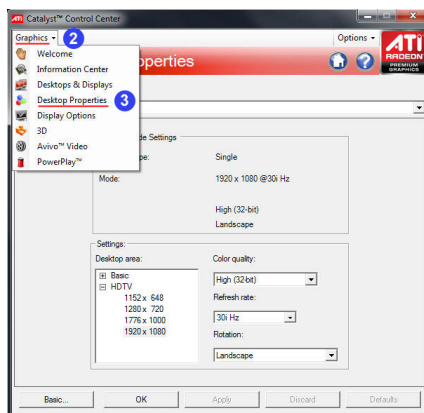
Pokyny pro používání nástroje ATI:

1. Spustíte ATI Control Center (Centrum ovládání ATI). Vyberte **Advanced (Upřesnit)**.

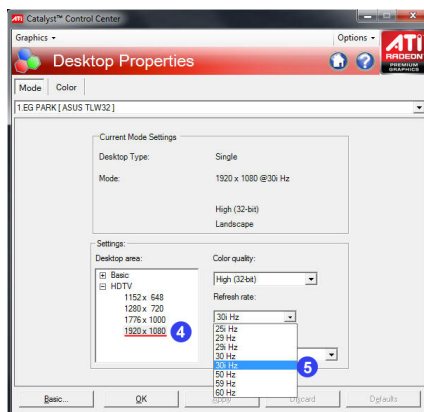




2. Klepněte na **Graphics (Grafika)**.
3. Vyberte **Desktop Properties (Vlastnosti plochy)**.



4. V poli Desktop area (Rozměry plochy) vyberte **1920 X 1080**.
5. V rozvíracím seznamu Refresh rate (Obnovovací frekvence) vyberte **30i Hz**.





Odstraňování problémů

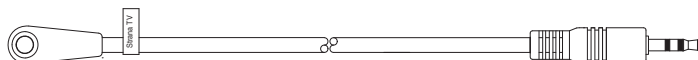
Čeština

Přenos IR nefunguje.

1. Zkontrolujte připojení kabelu IR.
 - a. Část IR zesilovače se štítkem **Player side (Strana přehrávače)** musí být připojena k BR-HD3 vysílači.



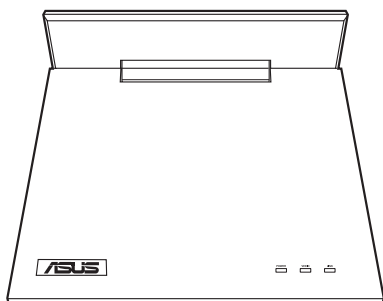
- b. Část IR přijímače se štítkem **TV side (Strana TV)** musí být umístěna na BR-HD3 přijímači.



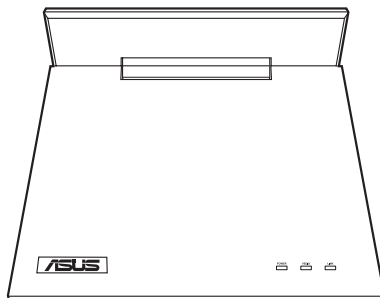
2. Zkontrolujte, zda nejsou IR přijímač a IR zesilovač umístěny přímo proti sobě. Při umístění IR přijímače a IR zesilovače přímo proti sobě dojde k nekonečné signálové smyčce, což způsobí selhání funkce přenosu IR.



BR-HD3 draadloos HDMI-pakket



ASUS BR-HD3-ontvanger



ASUS BR-HD3-zender

Extra handleiding

Du5328 / januari 2010
Eerste editie





PS3 en Xbox instellen op 1080i-uitgang



Voordat u het BR-HD3 draadloze HDMI-pakket gebruikt, moet u ervoor zorgen dat de schermresolutie van uw PS3 of Xbox 360 is ingesteld op **1080i**. Raadpleeg de volgende secties voor meer details.

De PS3 instellen op 1080i-uitgang

De PS3 instellen op 1080i-uitgang:

1. Gebruik een HDMI-kabel om de PS3 aan te sluiten op een extern display met hoge resolutie.
2. Ga naar **My PS3 (Mijn PS3) > System Settings (Systeeminstellingen) > Display > Video output settings (Video-uitgangsinstellingen) > HDMI > Customer (Klant)** en kies vervolgens **1080i** of **720P**.
3. Schakel de PS3 uit.
4. Sluit de HDMI-zender aan op de PS3 en sluit de HDMI-ontvanger aan op het externe display.
5. Zet alle apparatuur aan.

De Xbox 360 instellen op 1080i-uitgang

1. Gebruik een HDMI-kabel om de Xbox 360 aan te sluiten op een extern display met hoge resolutie.
2. Ga naar **My XBOX (Mijn XBOX) > System Settings (Systeeminstellingen) > Console Settings (Console-instellingen) > Display > HDTV Settings (HDTV-instellingen)** en kies vervolgens **1080i** of **720P**.
3. Schakel de Xbox 360 uit.
4. Gebruik de bijgeleverde HDMI-kabels, sluit de HDMI-zender aan op de Xbox 360 en sluit de HDMI-ontvanger aan op het externe display.
5. Zet alle apparatuur aan.



De computer instellen op 1080i-uitgang

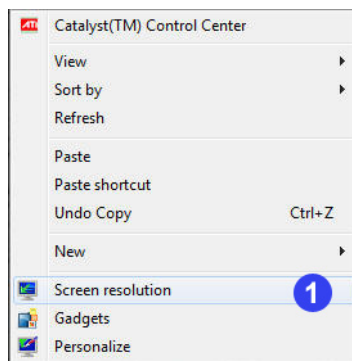


- Zorg dat uw computer via een HDMI-kabel is aangesloten op een extern display met hoge definitie.
- Voordat u het BR-HD3 draadloze HDMI-pakket gebruikt, moet u ervoor zorgen dat de resolutie van uw computerscherm is ingesteld op **1080i**. Raadpleeg de volgende secties voor meer details.

Het Windows®-hulpprogramma gebruiken

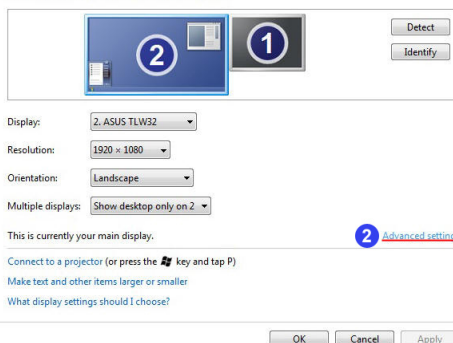
Het Windows-hulpprogramma gebruiken:

1. Klik met de rechtermuisknop op een willekeurige plaats op het bureaublad van Windows en klik op **Screen resolution (Schermresolutie)**.



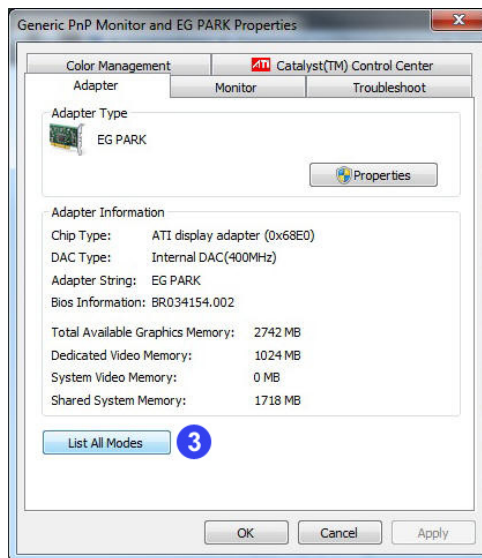
2. Klik op **Advanced settings (Geavanceerde instellingen)**.

Change the appearance of your displays

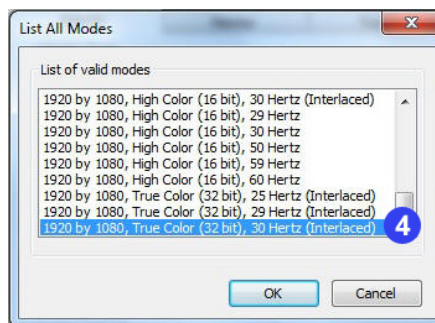




3. Klik op **List All Modes**
(Alle modi weergeven).



4. Selecteer **1920 by 1080, True color (32 Bit), 30Hertz (Interlaced)** (1920 op 1080, Ware kleuren (32-bits), 30Hertz (geïnterlineerd)).



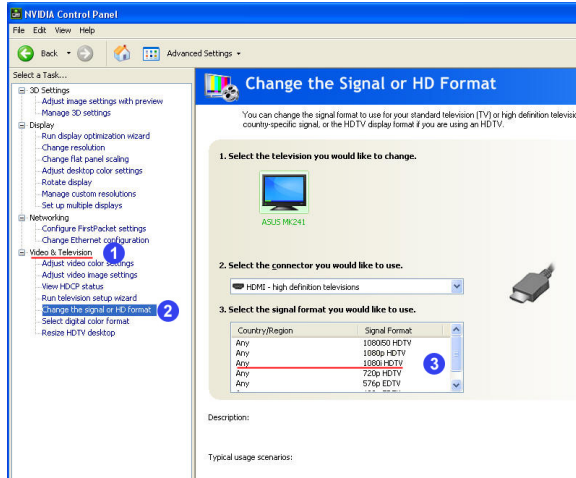


Het NVIDIA®-hulpprogramma gebruiken

Het NVIDIA-hulpprogramma gebruiken:

1. Start het bedieningspaneel van de NVIDIA. Selecteer **Video & Television** (**Video & televisie**).
2. Selecteer **Change the signal or HD format** (**Signaal of HD-formaat wijzigen**).
3. Selecteer het signaalformaat **1080i HDTV**.

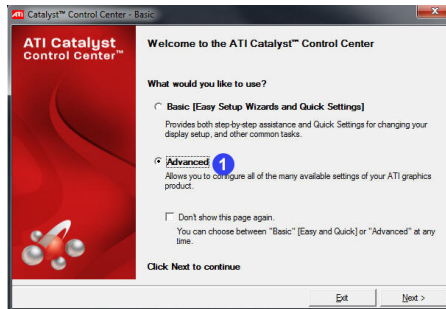
Nederlands



Het ATI®-hulpprogramma gebruiken

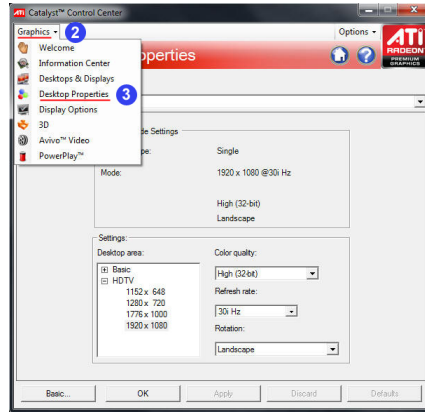
Het ATI-hulpprogramma gebruiken:

1. Start het ATI-controlecentrum. Selecteer **Advanced** (**Geavanceerd**).



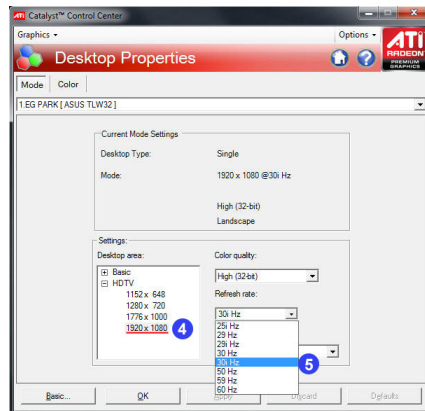


2. Klik op **Graphics** (Afbeeldingen).
3. Selecteer **Desktop Properties** (Bureaubladeigenschappen).



Nederlands

4. Selecteer **1920 X 1080** in het veld in het bureaubladgebied.
5. Selecteer **30i Hz** in de vervolgkeuzelijst Refresh rate (Vernieuwingsfrequentie).





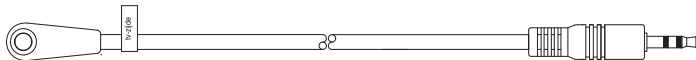
Problemen oplossen

IR-relais werkt niet.

1. Controleer de aansluiting van de IR-kabel.
 - a. Het gedeelte van de IR-blaster waarop de sticker **Player side (spelerzijde)** is aangebracht, moet worden aangesloten op de BR-HD3-zender.



- b. Het gedeelte van de IR-ontvanger waarop de sticker **TV side (tv-zijde)** is aangebracht, moet worden aangesloten op de BR-HD3-ontvanger.

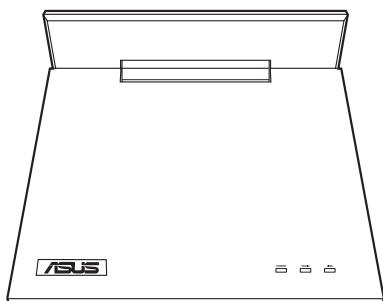


2. Zorg dat de IR-ontvanger en IR-blaster niet direct tegenover elkaar zijn geplaatst.

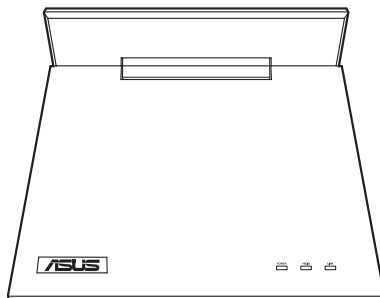
Als u de IR-ontvanger en IR-blaster direct tegenover elkaar plaatst, leidt dit tot een oneindige signaallus waardoor de IR-relaisfunctie kan mislukken.



Kit HDMI sem fios BR-HD3



Receptor ASUS BR-HD3



Transmissor ASUS BR-HD3

Guia suplementar

PG5328 / Janeiro de 2010
Primeira Edição





Configurar a PS3 e a Xbox para uma saída de 1080i



Antes de utilizar o Kit HDMI sem fios BR-HD3, certifique-se de que a resolução do ecrã da sua PS3 ou Xbox 360 está definida para **1080i**. Para mais detalhes, consulte as secções seguintes.

Configurar a PS3 para uma saída de 1080i

Para configurar a PS3 para uma saída de 1080i:

1. Utilizando o cabo HDMI, ligue a PS3 a um monitor externo de alta definição.
2. Vá a **My PS3 (A minha PS3) > System Settings (Definições do sistema) > Display (Apresentação) > Video output settings (Definições de saída de vídeo) > HDMI > Customer (Cliente)**, depois escolha **1080i** ou **720P**.
3. Desligue a PS3.
4. Ligue o transmissor HDMI à PS3 e o receptor HDMI ao monitor externo.
5. Ligue todos os dispositivos.

Configurar a Xbox 360 para uma saída de 1080i

1. Utilizando o cabo HDMI, ligue a Xbox 360 a um monitor externo de alta definição.
2. Vá a **My XBOX (A minha XBOX) > System Settings (Definições do sistema) > Console Settings (Definições da consola) > Display (Apresentação) > HDTV Settings (Definições de TV HD)**, depois escolha **1080i** ou **720P**.
3. Desligue a Xbox 360.
4. Utilizando os cabos HDMI fornecidos, ligue o transmissor HDMI à Xbox 360 e o receptor HDMI ao monitor externo.
5. Ligue todos os dispositivos.



Configurar o seu computador para uma saída de 1080i

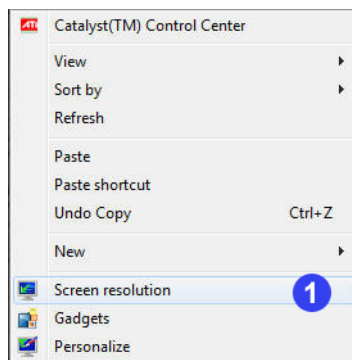


- Certifique-se de que o seu computador está ligado a um monitor externo de alta definição utilizando um cabo HDMI.
- Antes de utilizar o Kit HDMI sem fios BR-HD3, certifique-se de que a resolução do ecrã do seu computador está definida para **1080i**. Para mais detalhes, consulte as secções seguintes.

Utilizar o utilitário Windows®

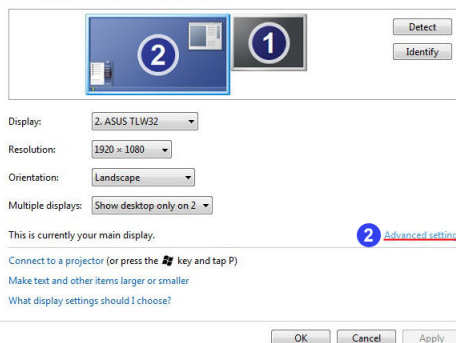
Para utilizar o utilitário Windows:

1. Clique com o botão direito do rato em qualquer local do ambiente de trabalho do Windows, e clique em **Screen resolution (Resolução do ecrã)**.



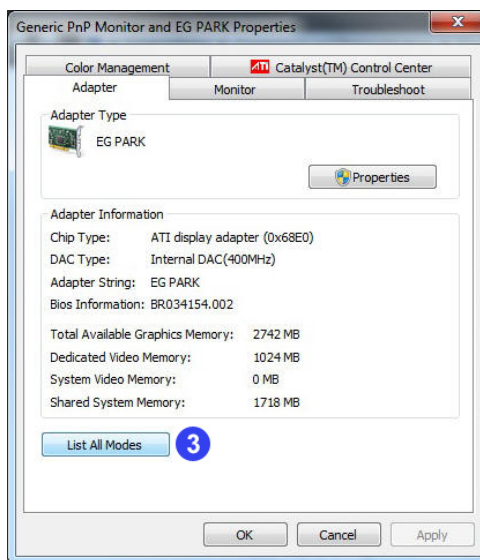
2. Clique em **Advanced settings (Definições avançadas)**.

Change the appearance of your displays

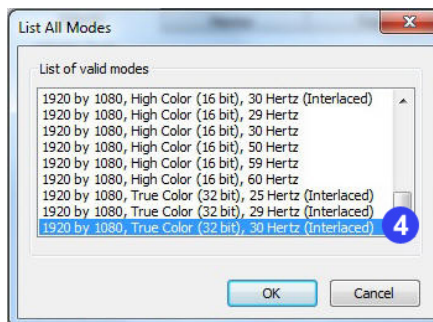




3. Clique em **List All Modes**
(**Listar todos os modos**).



4. Seleccione **1920 by 1080, True color (32 Bit), 30Hertz (Interlaced)** (1920 por 1080, True color (32 Bits), 30Hertz (Entrelaçado)).

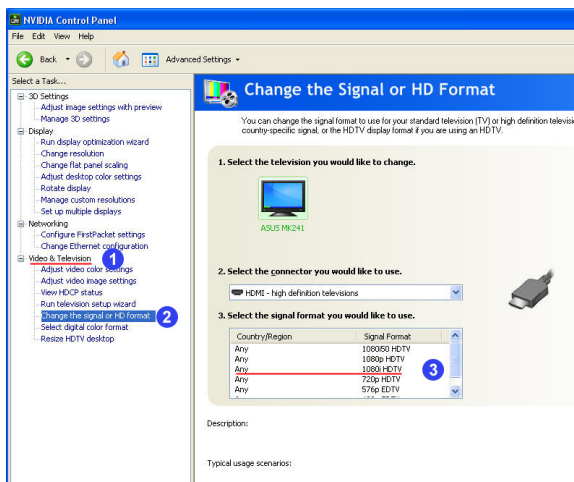




Utilizar o utilitário NVIDIA®

Para utilizar o utilitário NVIDIA:

1. Inicie o Painel de Controlo NVIDIA. Selecciono **Video & Television (Vídeo e Televisão)**.
2. Selecciono **Change the signal or HD format (Alterar o sinal ou formato HD)**
3. Selecciono o formato de sinal **1080i HDTV (1080i TV HD)**.

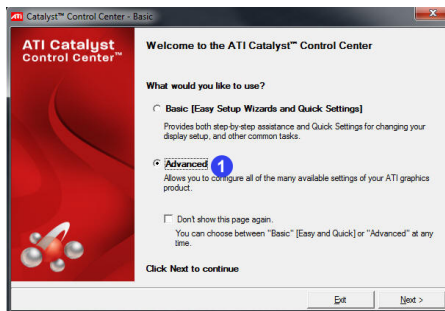


Português

Utilizar o utilitário ATI®

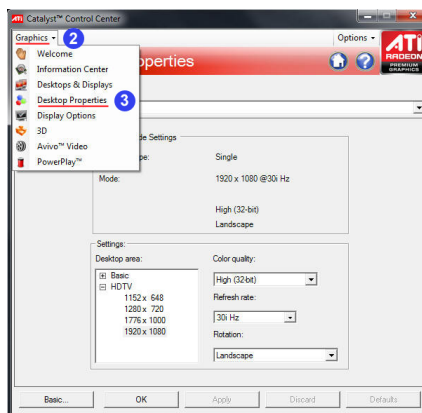
Para utilizar o utilitário ATI:

1. Inicie o Centro de Controlo ATI. Selecciono **Advanced (Avançado)**.

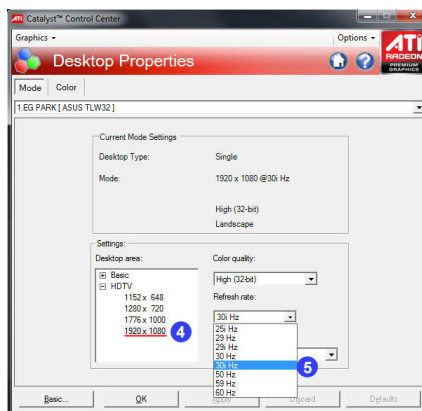




2. Clique em **Graphics (Gráficos)**.
3. Seleccione **Desktop Properties (Propriedades do ambiente de trabalho)**.



4. No campo Ambiente de trabalho, seleccione **1920 X 1080**.
5. Na lista pendente de Refresh Rate (Taxa de actualização), seleccione **30i Hz**.





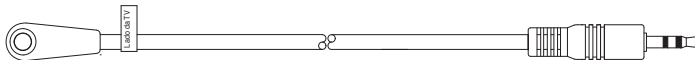
Resolução de problemas

A transmissão de IV não funciona.

1. Verifique a ligação do cabo de IV.
 - a. A parte do Transmissor IV com a etiqueta **Player side (Lado do leitor)** deverá ser ligada ao transmissor do BR-HD3.



- b. A parte do Receptor IV com a etiqueta **TV side (Lado da TV)** deverá ser ligada ao receptor do BR-HD3.

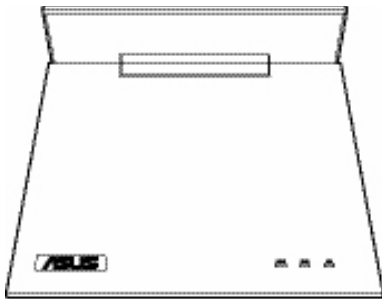


2. Certifique-se de que o Receptor IV e o Transmissor IV não se encontram directamente virados um para o outro.

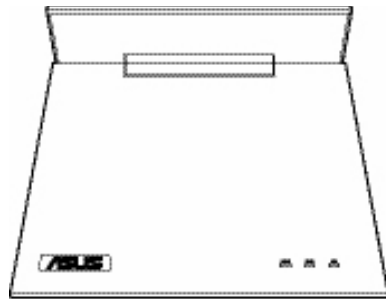
Se o Receptor IV e o Transmissor IV estiverem directamente virados um para o outro poderão originar a repetição infinita de sinal, o que provocará a falha da função de transmissão de IV.



BR-HD3 無線 HDMI 套件



華碩 BR-HD3 接收器



華碩 BR-HD3 傳送器

補充指南

T5328 / 2010 年 2 月
第一版





將 PS3 與 XBox 設定為 1080i 輸出



在使用 BR-HD3 無線 HDMI 套件之前，請確認您的 PS3 或 XBox 360 的螢幕解析度已設定為 **1080i**。詳細說明請參考以下章節。

將 PS3 設定為 1080i 輸出

請依以下步驟將 PS3 設定為 1080i 輸出：

1. 用一條 HDMI 排線，將 PS3 连接到一台高解析度外接顯示螢幕。
2. 選擇 **設定** > **顯示器設定** > **影像輸出設定** > **HDMI** > **自訂**，接著選擇 **1080i** 或 **720P**。
3. 關閉 PS3。
4. 將 HDMI 傳送器连接到 PS3，並將 HDMI 接收器连接到外接顯示螢幕。
5. 開啟所有裝置。

將 XBox 360 設定為 1080i 輸出

請依以下步驟將 XBox 360 設定為 1080i 輸出：

1. 用一條 HDMI 排線，將 XBox 360 连接到一台高解析度外接顯示螢幕。
2. 選擇 **我的 XBOX** > **主機設定** > **顯示** > **HDTV 設定**，接著選擇 **D3 (1125i / 1080i)** 或 **D4 (750p / 720p)**。
3. 關閉 XBox 360。
4. 使用附贈的 HDMI 排線，將 HDMI 傳送器连接到 XBox 360，並將 HDMI 接收器连接到外接顯示螢幕。
5. 開啟所有裝置。



將電腦設定為 1080i 輸出



- 請確認您已使用 HDMI 排線將電腦連接到高解析度螢幕。
- 在使用 BR-HD3 無線 HDMI 套件之前，請確認您的電腦螢幕解析度已設定為 1080i。詳細說明請參考以下章節。

使用 Windows® 工具程式

請依以下步驟使用 Windows 工具程式：

1. 在 Windows 桌面的任意位置按滑鼠右鍵，接著點選 **螢幕解析度**。



2. 點選 **進階設定**。

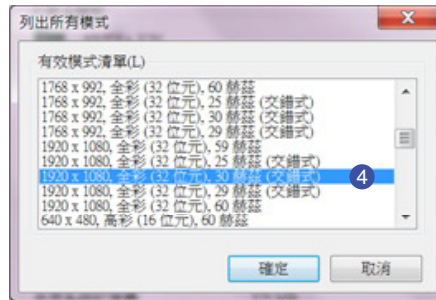




3. 點選 列出所有模式。



4. 選擇 1920 × 1080，全彩 (32 位元)，30 赫茲 (交錯式)。





使用 NVIDIA® 工具程式

請依以下步驟使用 NVIDIA 工具程式：

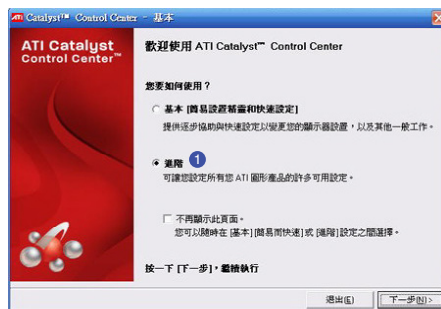
1. 開啟 NVIDIA 控制面板。選擇 視訊與電視。
2. 選擇 變更信號或 HD 格式。
3. 選擇 1080i HDTV 信號格式。



使用 ATI® 工具程式

請依以下步驟使用 ATI 工具程式：

1. 開啟 ATI Control Center。選擇 進階。接著點選 下一步。





2. 在 圖形設定 標籤頁點選 HDTV 支援。
3. 選擇 1080i30 標準 (1920 x 1080 @ 30Hz)。
4. 點選 套用格式。





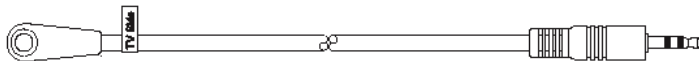
疑難排解

紅外線中繼功能不運作

1. 檢查 IR 線連接。
 - a. 紅外線增強器貼有 **Player side** 貼紙的一端必須連接到 BR-HD3 傳送器。



- b. 紅外線接收器貼有 **TV Side** 貼紙的一端必須連接到 BR-HD3 接收器。

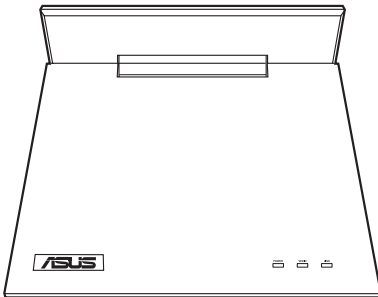


2. 確認紅外線接收器和紅外線增強器沒有放置在直接相對的位置。
將紅外線接收器和紅外線增強器放置於直接相對的位置會形成無限訊號循環，導致紅外線中繼功能無效。

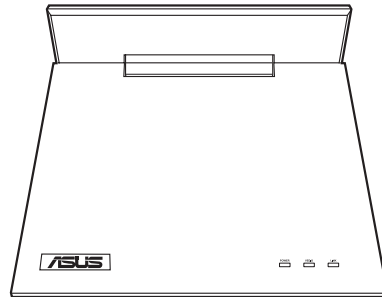


ASUS®

ชุด HDMI ไร้สาย BR-HD3



ตัวรับสัญญาณ ASUS BR-HD3



ตัวส่งสัญญาณ ASUS BR-HD3

คู่มือเสริม

TH5328 / มกราคม 2010
การแก้ไขครั้งแรก





การตั้งค่า PS3 และ Xbox ไปยังเอาต์พุต 1080i



ก่อนที่จะใช้ชุด HDMI ไร้สาย BR-HD3, ตรวจสอบให้แน่ใจว่าความละเอียดหน้าจอของ PS3 หรือ Xbox 360 ของคุณถูกตั้งค่าเป็น **1080i** ในคู่มือต่อไปสำหรับรายละเอียดเพิ่มเติม

การตั้งค่า PS3 ไปยังเอาต์พุต 1080i

ในการตั้งค่า PS3 ไปยังเอาต์พุต 1080i:

1. ใช้สายเคเบิล HDMI, เชื่อมต่อ PS3 ไปยังจอแสดงผลภายนอกแบบไฮเดฟฟินีชั่น
2. ไปที่ **My PS3 (PS3 ของฉัน) > System Settings (การตั้งค่าระบบ) > Display (การแสดงผล) > Video output settings (การตั้งค่าเอาต์พุตวิดีโอ) > HDMI > Customer (ลูกค้า)**, จากนั้นเลือก **1080i** หรือ **720P**
3. ปิดเครื่อง PS3
4. เชื่อมต่อตัวส่งสัญญาณ HDMI ไปยัง PS3 และตัวรับสัญญาณ HDMI ไปยังจอแสดงผลภายนอก
5. เปิดอุปกรณ์ทั้งหมด

การตั้งค่า Xbox 360 ไปยังเอาต์พุต 1080i

1. ใช้สายเคเบิล HDMI, เชื่อมต่อ Xbox 360 ไปยังจอแสดงผลภายนอกแบบไฮเดฟฟินีชั่น
2. ไปที่ **My XBOX (XBOX ของฉัน) > System Settings (การตั้งค่าระบบ) > Console Settings (การตั้งค่าคอนโซล) > Display (การแสดงผล) > HDTV Settings (การตั้งค่า HDTV)**, จากนั้นเลือก **1080i** หรือ **720P**
3. ปิดเครื่อง Xbox 360
4. ใช้สายเคเบิล HDMI ที่ให้มา, เชื่อมต่อตัวส่งสัญญาณ HDMI ไปยัง Xbox 360 และตัวรับสัญญาณ HDMI ไปยังจอแสดงผลภายนอก
5. เปิดอุปกรณ์ทั้งหมด





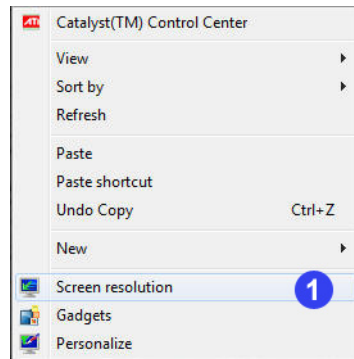
การตั้งค่าคอมพิวเตอร์ของคุณไปยังเอาต์พุต 1080i



- ให้แน่ใจว่าคอมพิวเตอร์ของคุณเชื่อมต่อกับจอแสดงผลภายนอกแบบไฮเดฟฟิน์ชันโดยใช้สายเคเบิล HDMI
- ก่อนที่จะใช้ชุด HDMI ไร้สาย BR-HD3, ตรวจสอบให้แน่ใจว่าความละเอียดหน้าจอของคอมพิวเตอร์ของคุณถูกตั้งค่าเป็น **1080i** ให้ดูส่วนต่อไปนี้เป็นสำหรับรายละเอียดเพิ่มเติม

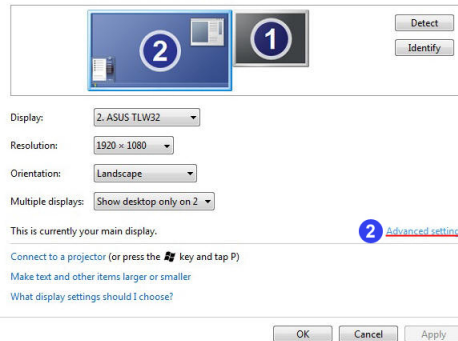
การใช้อยู่ที่ Windows® ในการใช้อยู่ที่ Windows:

1. คลิกขวาที่ใดก็ได้บนเดสก์ทอป Windows, จากนั้นคลิก **Screen resolution** (ความละเอียดหน้าจอ)



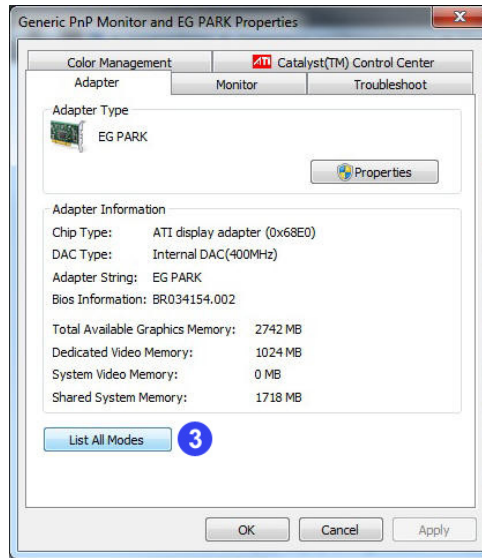
2. คลิก **Advanced settings** (การตั้งค่าขั้นสูง)

Change the appearance of your displays

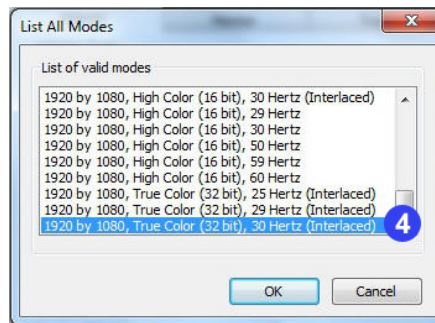




3. คลิก List All Modes (แสดงโหมดทั้งหมด)



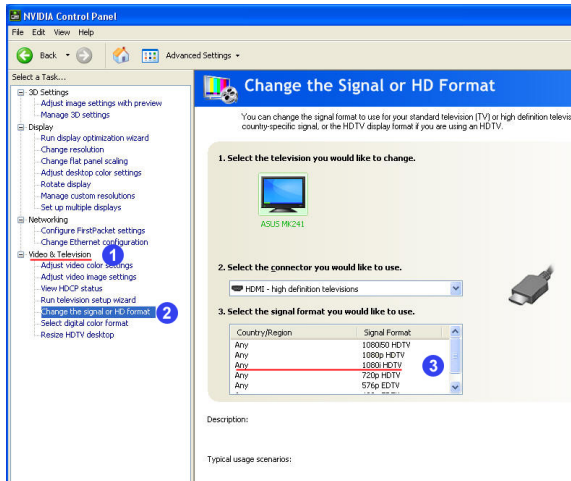
4. เลือก 1920 by 1080, True color (32 Bit), 30Hertz (Interlaced) (1920 x 1080, สัจริง (32 บิต), 30Hertz (อินเตอร์เลซ))





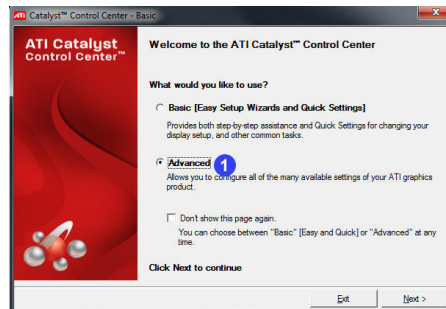
การใช้ยูนิตลิต์ NVIDIA® ในการใช้ยูนิตลิต์ NVIDIA:

1. เปิดแผงควบคุม NVIDIA เลือก **Video & Television** (วิดีโอ & โทรทัศน์)
2. เลือก **Change the signal or HD format** (เปลี่ยนสัญญาณหรือรูปแบบ HD)
3. เลือกรูปแบบสัญญาณ **1080i HDTV**



การใช้ยูนิตลิต์ ATI® ในการใช้ยูนิตลิต์ ATI:

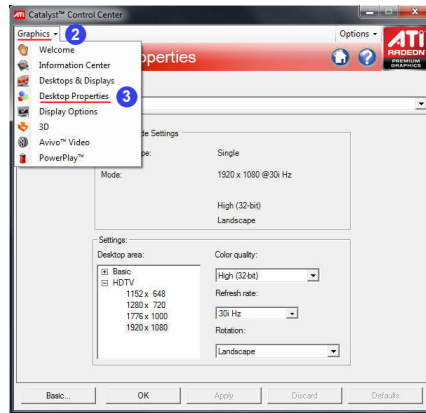
1. เปิดศูนย์ควบคุม ATI เลือก **Advanced** (ขั้นสูง)



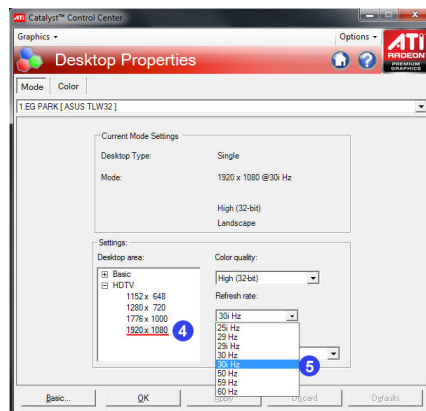


คู่มือเสริม ชุด HDMI ไร้สาย BR-HD3

2. คลิก **Graphics** (กราฟฟิก)
3. เลือก **Desktop Properties**
(คุณสมบัติเดสก์ท็อป)



4. จากฟิลต์ที่บริเวณเดสก์ท็อป, เลือก **1920 X 1080**
5. จากรายการแบบดิ่งลงของอัตรารีเฟรช, เลือก **30i Hz**



501



การแก้ไขปัญหา

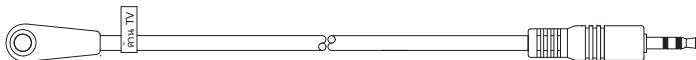
IR รีเลย์ไม่ทำงาน

1. ตรวจสอบการเชื่อมต่อสายเคเบิล IR

- ก. ส่วนของ IR บลาสเตอร์ที่มีสติกเกอร์ **ด้านเครื่องเล่น** ติดอยู่ ต้องเชื่อมต่อไปยังตัวส่งสัญญาณ BR-HD3



- ข. ส่วนของตัวรับสัญญาณ IR ที่มีสติกเกอร์ **ด้าน TV** ติดอยู่ ต้องวางบนตัวรับสัญญาณ BR-HD3

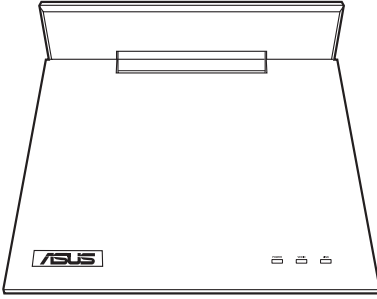


2. ให้แน่ใจว่าตัวรับสัญญาณ IR และ IR บลาสเตอร์ไม่ได้วางโดยหันหน้าเข้าหากันโดยตรง

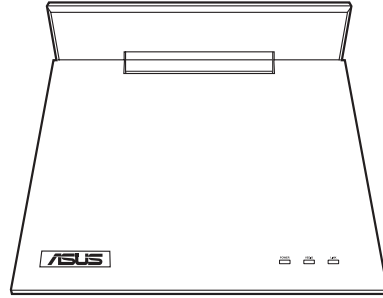
การวางตัวรับสัญญาณ IR และ IR บลาสเตอร์โดยหันหน้าเข้าหากันโดยตรงจะทำให้เกิดการรบกวนของสัญญาณที่ไม่มีที่สิ้นสุด ซึ่งเป็นสาเหตุให้ฟังก์ชัน IR ทำงานล้มเหลว



BR-HD3 Kablosuz HDMI Kiti



ASUS BR-HD3 alıcı



ASUS BR-HD3 verici

Yardımcı Kılavuz

TR5328 / Ocak 2010
Birinci Baskı





PS3 ve XBox'ı 1080i çıkışa ayarlayın



BR-HD3 Kablosuz HDMI Kiti'ni kullanmadan önce, PS3 veya XBox 360'ınızın ekran çözünürlüğünün **1080i**'ye ayarlı olduğundan emin olun. Daha fazla bilgi için aşağıdaki bölümlere başvurun.

PS3'ün 1080i çıkışa ayarlanması

PS3'ü 1080i çıkışa ayarlamak için:

1. Bir HDMI kablosu kullanarak, PS3'ü yüksek tanımlı bir harici ekrana bağlayın.
2. **My PS3 (PS3'üm) > System Settings (Sistem Ayarları) > Display (Ekran) > Video output settings (Video çıkış ayarları) > HDMI > Customer (Müşteri)**'ye gidin, daha sonra **1080i** veya **720P**'yi seçin.
3. PS3'ü kapatın.
4. HDMI vericisini PS3'e ve HDMI alıcısını harici ekrana bağlayın.
5. Bütün aygıtları kapatın.

XBox 360'ın 1080i çıkışa ayarlanması

1. Bir HDMI kablosu kullanarak, XBox 360 'ı yüksek tanımlı bir harici ekrana bağlayın.
2. **My XBOX (XBOX'um) > System Settings (Sistem Ayarları) > Console Settings (Konsol Ayarları) > Display (Ekran) > HDTV Settings (HDTV Ayarları)**'na gidin, daha sonra **1080i** veya **720P**'yi seçin.
3. XBox 360'ı kapatın.
4. Birlikte verilen HDMI kabloları kullanarak, HDMI vericisini XBox 360'a ve HDMI alıcısını harici ekrana bağlayın.
5. Bütün aygıtları kapatın.



Bilgisayarınızı 1080i çıkışa ayarlayın

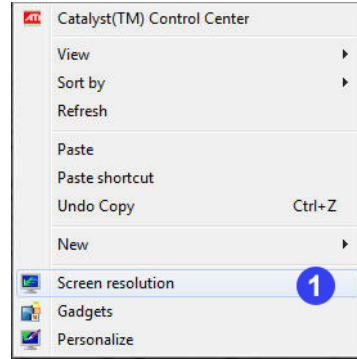


- Bilgisayarınızın HDMI kablosu kullanılarak yüksek tanımlı bir harici ekrana bağlandığından emin olun.
- BR-HD3 Kablosuz HDMI Kiti'ni kullanmadan önce, bilgisayarınızın ekran çözünürlüğünün **1080i**'ye ayarlı olduğundan emin olun. Daha fazla bilgi için aşağıdaki bölümlere başvurun.

Windows® yardımcı programının kullanılması

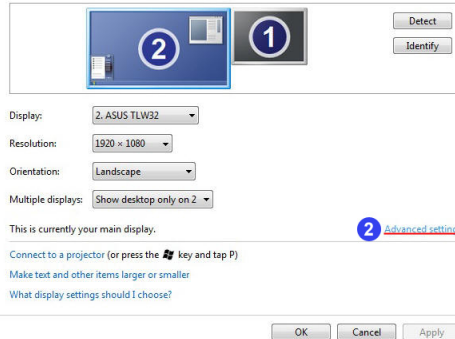
Windows yardımcı programını kullanmak için:

1. Windows masa üstünde herhangi bir yere sağ tıklayın ve **Screen resolution** (Ekran çözünürlüğü)'ne tıklayın.



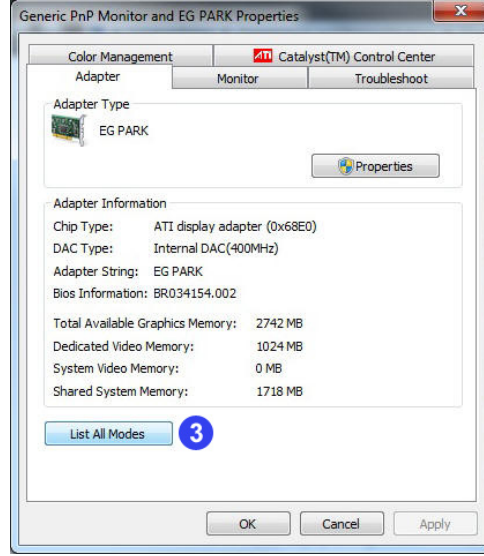
2. **Advanced settings** (Gelişmiş ayarlar)'a tıklayın.

Change the appearance of your displays

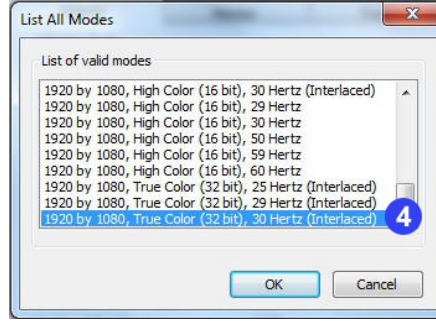




3. **List All Modes (Bütün Modları Listele)**'ye tıklayın.



4. **1920 by 1080, True color (32 Bit), 30Hertz (Interlaced) (1920 ile 1080, Doğru renk (32 Bit), 30Hertz (Titreşimli))**'yi seçin.

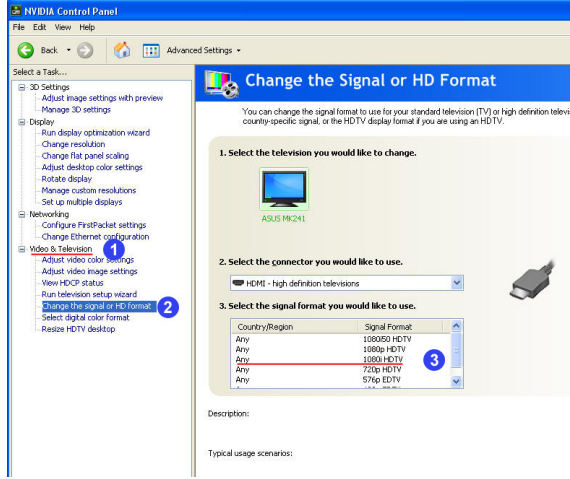




NVIDIA® yardımcı programının kullanılması

NVIDIA yardımcı programını kullanmak için:

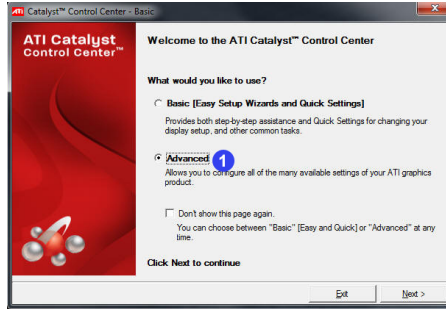
1. NVIDIA Denetim Masası'nı başlatın. **Video &Televizyon (Video ve Televizyon)**'u seçin.
2. **Change the signal or HD format (Sinyal veya HD biçimini değiştir)**'i seçin.
3. **1080i HDTV** sinyal biçimini seçin.



ATI® yardımcı programının kullanılması

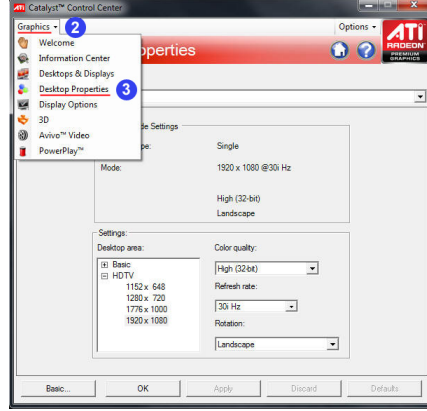
ATI yardımcı programını kullanmak için:

1. ATİ Denetim Merkezi'ni başlatın. **Advanced (Gelişmiş)**'i seçin.

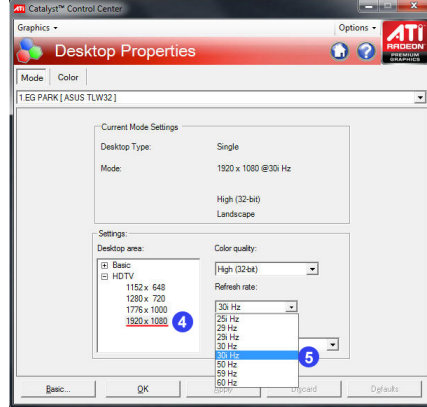




2. **Graphics (Grafik)**'i tıklayın.
3. **Desktop Properties (Masaüstü Özellikleri)**'ni seçin.



4. Masaüstü alanından, **1920 X 1080**'i seçin.
5. Yenileme hızı açılır listesinden, **30i Hz**'yi seçin.





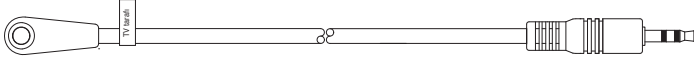
Sorun giderme

Kızıl ötesi aktarması çalışmıyor.

1. Kızılötesi kablo bağlantısını kontrol edin.
 - a. Üzerinde **Player side (Oynatıcı tarafı)** etiketi bulunan Kızılötesi Blaster bağlantısı BR-HD3 vericisine bağlanmalıdır.



- b. Üzerinde **TV side (TV tarafı)** etiketi bulunan Kızılötesi Alıcı bağlantısı BR-HD3 alıcısına yerleştirilmelidir.



2. Kızılötesi Alıcı ve Kızılötesi Blaster doğrudan birbirlerine bakacak şekilde yerleştirilmediğinden emin olun.

Kızılötesi Alıcı ve Kızılötesi Blaster'ın doğrudan birbirine bakacak şekilde yerleştirilmesi Kızılötesi aktarım işlevinin çalışmamasına neden olan sonsuz bir sinyal döngüsü ile sonuçlanır.



Notices

REACH

Complying with the REACH (Registration, Evaluation, Authorisation, and Restriction of Chemicals) regulatory framework, we published the chemical substances in our products at ASUS REACH website at <http://green.asus.com/english/REACH.htm>.

Federal Communications Commission Statement

This device complies with Part 15 of the FCC Rules. Operation is subject to the following two conditions:

- This device may not cause harmful interference.
- This device must accept any interference received, including interference that may cause undesired operation.

This equipment has been tested and found to comply with the limits for a class B digital device, pursuant to part 15 of the FCC Rules. These limits are designed to provide reasonable protection against harmful interference in a residential installation.

This equipment generates, uses and can radiate radio frequency energy and, if not installed and used in accordance with the instructions, may cause harmful interference to radio communications. However, there is no guarantee that interference will not occur in a particular installation. If this equipment does cause harmful interference to radio or television reception, which can be determined by turning the equipment off and on, the user is encouraged to try to correct the interference by one or more of the following measures:

- Reorient or relocate the receiving antenna.
- Increase the separation between the equipment and receiver.
- Connect the equipment into an outlet on a circuit different from that to which the receiver is connected.
- Consult the dealer or an experienced radio/TV technician for help.



Caution: Any changes or modifications not expressly approved by the party responsible for compliance could void the user's authority to operate the equipment.

FCC Radiation Exposure Statement

This equipment complies with FCC radiation exposure limits set forth for an uncontrolled environment. This equipment should be installed and operated with minimum distance 20cm between the radiator & your body.

This transmitter must not be co-located or operating in conjunction with any other antenna or transmitter. 2.4GHz operation of this product in the U.S.A. is firmware-limited to channels 1 through 11.



Prohibition of Co-location

This device and its antenna(s) must not be co-located or operating in conjunction with any other antenna or transmitter.

Safety Information

To maintain compliance with FCC's RF exposure guidelines, this equipment should be installed and operated with minimum distance 20cm between the radiator and your body. Use on the supplied antenna.

Declaration of Conformity for R&TTE directive 1999/5/EC

Essential requirements – Article 3

Protection requirements for health and safety – Article 3.1a

Testing for electric safety according to EN 60950-1 has been conducted. These are considered relevant and sufficient.

Protection requirements for electromagnetic compatibility – Article 3.1b

Testing for electromagnetic compatibility according to EN 301 489-1 and EN 301 489-17 has been conducted. These are considered relevant and sufficient.

Effective use of the radio spectrum – Article 3.2

Testing for radio test suites according to EN 300 328- 2 has been conducted. These are considered relevant and sufficient.

CE Mark Warning

This is a Class B product, in a domestic environment, this product may cause radio interference, in which case the user may be required to take adequate measures.

NCC 警語

經型式認證合格之低功率射頻電機，非經許可，公司、商號或使用者均不得擅自變更頻率、

加大功率或變更原設計之特性及功能。

低功率射頻電機之使用不得影響飛航安全及干擾合法通信；經發現有干擾現象時，應立即

停用，並改善至無干擾時方得繼續使用。

前項合法通信，指依電信法規定作業之無線電通信。

低功率射頻電機須忍受合法通信或工業、科學及醫療用電波輻射性電機設備之干擾。





Contact information

Manufacturer:	ASUSTeK Computer Inc.
	Tel: +886-2-2894-3447 Address: No. 150, LI-DE RD., PEITOU, TAIPEI 112, TAIWAN
Authorised representative in Europe:	ASUS Computer GmbH Address: HARKORT STR. 21-23, 40880 RATINGEN, GERMANY
Authorised distributors in Turkey:	BOGAZICI BIL GISAYAR SAN. VE TIC. A.S. Tel: +90 212 3311000 Address: AYAZAGA MAH. KEMERBURGAZ CAD. NO.10 AYAZAGA/ISTANBUL
	INDEX BILGISAYAR SISTEMLERI MUHENDISLIK SAN. VE TIC. A.S. Tel: +90 212 3312121 Address: AYAZAGA MAH: CENDERE YOLU NO:9 AYAZAGA/ISTANBUL

EEE Yönetmeliğine Uygundur