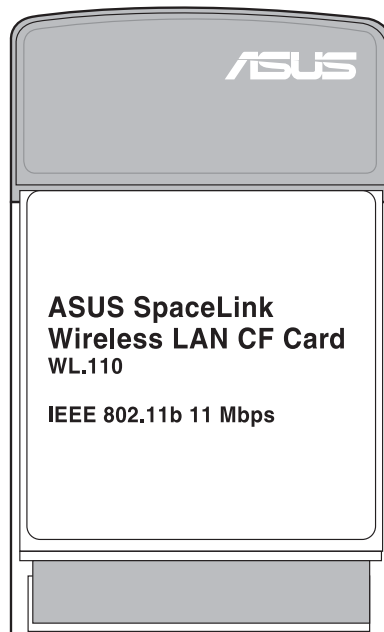


ASUS SpaceLink
WL-110 WLAN CF Card
User's Manual



Copyright Information

No part of this manual, including the products and software described in it, may be reproduced, transmitted, transcribed, stored in a retrieval system, or translated into any language in any form or by any means, except documentation kept by the purchaser for backup purposes, without the express written permission of ASUSTeK COMPUTER INC. (“ASUS”).

ASUS PROVIDES THIS MANUAL “AS IS” WITHOUT WARRANTY OF ANY KIND, EITHER EXPRESS OR IMPLIED, INCLUDING BUT NOT LIMITED TO THE IMPLIED WARRANTIES OR CONDITIONS OF MERCHANTABILITY OR FITNESS FOR A PARTICULAR PURPOSE. IN NO EVENT SHALL ASUS, ITS DIRECTORS, OFFICERS, EMPLOYEES OR AGENTS BE LIABLE FOR ANY INDIRECT, SPECIAL, INCIDENTAL, OR CONSEQUENTIAL DAMAGES (INCLUDING DAMAGES FOR LOSS OF PROFITS, LOSS OF BUSINESS, LOSS OF USE OR DATA, INTERRUPTION OF BUSINESS AND THE LIKE), EVEN IF ASUS HAS BEEN ADVISED OF THE POSSIBILITY OF SUCH DAMAGES ARISING FROM ANY DEFECT OR ERROR IN THIS MANUAL OR PRODUCT.

Product warranty or service will not be extended if: (1) the product is repaired, modified or altered, unless such repair, modification or alteration is authorized in writing by ASUS; or (2) the serial number of the product is defaced or missing.

Products and corporate names appearing in this manual may or may not be registered trademarks or copyrights of their respective companies, and are used only for identification or explanation and to the owners’ benefit, without intent to infringe.

SPECIFICATIONS AND INFORMATION CONTAINED IN THIS MANUAL ARE FURNISHED FOR INFORMATIONAL USE ONLY, AND ARE SUBJECT TO CHANGE AT ANY TIME WITHOUT NOTICE, AND SHOULD NOT BE CONSTRUED AS A COMMITMENT BY ASUS. ASUS ASSUMES NO RESPONSIBILITY OR LIABILITY FOR ANY ERRORS OR INACCURACIES THAT MAY APPEAR IN THIS MANUAL, INCLUDING THE PRODUCTS AND SOFTWARE DESCRIBED IN IT.

Copyright © 2002 ASUSTeK COMPUTER INC. All Rights Reserved.

Product Name:	ASUS SpaceLink WL-110 WLAN CF Card
Manual Revision:	1.01 E1093
Release Date:	July 2002

Copyright Information

ASUSTeK COMPUTER INC. (Asia-Pacific)

Address: 150 Li-Te Road, Peitou, Taipei, Taiwan 112
General Tel: +886-2-2894-3447
General Fax: +886-2-2894-3449
General Email: info@asus.com.tw

Technical Support

MB/Others (Tel): +886-2-2890-7121 (English)
Notebook (Tel): +886-2-2890-7122 (English)
Desktop/Server: +886-2-2890-7123 (English)
Support Fax: +886-2-2890-7698
Support Email: tsd@asus.com.tw
Web Site: www.asus.com.tw
Newsgroup: cscnews.asus.com.tw

ASUS COMPUTER INTERNATIONAL (America)

Address: 6737 Mowry Avenue, Mowry Business Center,
Building 2, Newark, CA 94560, USA
General Fax: +1-510-608-4555
General Email: tmd1@asus.com

Technical Support

Support Fax: +1-510-608-4555
General Support: +1-502-995-0883
Notebook Support: +1-877-918-ASUS (2787)
Web Site: www.asus.com
Support Email: tsd@asus.com

ASUS COMPUTER GmbH (Europe)

Address: Harkortstr. 25, 40880 Ratingen, BRD, Germany
General Fax: +49-2102-442066
General Email: sales@asuscom.de (for marketing requests only)

Technical Support

MB/Others: +49-2102-9599-0
Notebook (Tel): +49-2102-9599-10
Support Fax: +49-2102-9599-11
Support (Email): www.asuscom.de/de/support (for online support)
Web Site: www.asuscom.de

Safety Statements

Federal Communications Commission Statement

This device complies with FCC Rules Part 15. Operation is subject to the following two conditions:

- This device may not cause harmful interference, and
- This device must accept any interference received, including interference that may cause undesired operation.

This equipment has been tested and found to comply with the limits for a class B digital device, pursuant to Part 15 of the Federal Communications Commission (FCC) rules. These limits are designed to provide reasonable protection against harmful interference in a residential installation. This equipment generates, uses, and can radiate radio frequency energy and, if not installed and used in accordance with the instructions, may cause harmful interference to radio communications. However, there is no guarantee that interference will not occur in a particular installation. If this equipment does cause harmful interference to radio or television reception, which can be determined by turning the equipment off and on, the user is encouraged to try to correct the interference by one or more of the following measures:

- Reorient or relocate the receiving antenna.
- Increase the separation between the equipment and receiver.
- Connect the equipment into an outlet on a circuit different from that to which the receiver is connected.
- Consult the dealer or an experienced radio/TV technician for help.

WARNING! The use of a shielded-type power cord is required in order to meet FCC emission limits and to prevent interference to the nearby radio and television reception. It is essential that only the supplied power cord be used. Use only shielded cables to connect I/O devices to this equipment. You are cautioned that changes or modifications not expressly approved by the party responsible for compliance could void your authority to operate the equipment.

Reprinted from the Code of Federal Regulations #47, part 15.193, 1993. Washington DC: Office of the Federal Register, National Archives and Records Administration, U.S. Government Printing Office.

Canadian Department of Communications

This digital apparatus does not exceed the Class B limits for radio noise emissions from digital apparatus set out in the Radio Interference Regulations of the Canadian Department of Communications.

This Class B digital apparatus complies with Canadian ICES-003. Cet appareil numérique de la classe B est conforme à la norme NMB-003 du Canada.

Safety Statements

Safety Information

In order to maintain compliance with the FCC RF exposure guidelines, this equipment should be installed and operated with minimum distance 5cm between the radiator and your body. Use only with supplied antenna. Unauthorized antenna, modification, or attachments could damage the transmitter and may violate FCC regulations. Any changes of modifications not expressly approved by the grantee of this device could void the users authority to operate the equipment.

FCC Radio Frequency Exposure Caution Statement

This Wireless LAN radio device has been evaluated under FCC Bulletin OET 65C and found compliant to the requirements as set forth in CFR 47 Sections 2.1091, 2.1093, and 15.247(b)(4) addressing RF Exposure from radio frequency devices. The radiation output power of this Wireless LAN device is far below the FCC radio frequency exposure limits. Nevertheless, this device shall be used in such a manner that the potential for human contact during normal operation – as a mobile or portable device but use in a body-worn way is strictly prohibit. When using this device, a certain separation distance between antenna and nearby persons has to be kept to ensure RF exposure compliance. In order to comply with the RF exposure limits established in the ANSI C95.1 standards, the distance between the antennas and the user should not be less than 5cm.

Table of Contents

Chapter 1 - Introduction	7
Overview	7
Package Contents	8
Chapter 2 - Installation	9
Step 1 - Install the SpaceLink CF card utility	9
Step 2 - Insert the ASUS SpaceLink CF Card	10
Step 3 - Run the SpaceLink CF Card Utility	11
Step 4 - Setup the ASUS SpaceLink CF Card	12
Step 5 - Run Your Internet Browser	13
Step 6 - Enter Your Connection Settings	14
Chapter 3 - Use in Notebook PCs	15
PC Card Compact Flash Adapter	15

Overview

Thank you for purchasing the ASUS SpaceLink CF Card. The ASUS SpaceLink CF Card is a wireless network interface card (NIC) for any computer equipped with a Compact Flash (CF) Type II socket or Personal Computer Memory Card International Association (PCMCIA) Type II socket with a CF adapter. ASUS SpaceLink CF Card is designed to be fully compliant with the IEEE 802.11b wireless local area network (Wireless LAN) standard. As a result of the completion of the standard, the interoperability of Wireless LAN products among multiple manufacturers will be guaranteed.

The ASUS SpaceLink CF Card product provides high-speed, standards-based Wireless LAN solutions. Supporting data rates up to 11 Mbps, with automatic fallback to 5.5, 2, and 1 Mbps. It operates in the unlicensed 2.4 GHz frequencies called the Instrumentation, Science, and Medical (ISM) band. Unlicensed means free of charge to users. The ASUS SpaceLink CF Card configuration utility is a user-friendly application that helps you quickly setup multiple roaming nodes using the ASUS SpaceLink CF Card. You can even export the configuration settings to a file and import them to other computers for fast multiple installations.

Wireless LANs are complementary extensions to existing wired LANs, offering complete mobility while maintaining continuous network connectivity to both corporate and home Intranets. They add a new level of convenience for LAN users. PC users stay connected to the network anywhere throughout a building without being bound by a LAN wire. This is accomplished through the use of a device known as the Access Point (AP). By making use of AP in the office, you can easily establish mobile network connections to the enterprise Intranet or Internet. Moreover, you can bring your ASUS SpaceLink CF Card home to make your home-networking dream come true! A home-dedicated AP, with built-in Internet gateway capability, allows your family to share a broadband Modem and one ISP account simultaneously with no excessive, tedious ties! Connected anywhere, at any time, your family will feel closer by the invisible magic of the ASUS SpaceLink CF Card!

Chapter 1 - Introduction

Package Contents

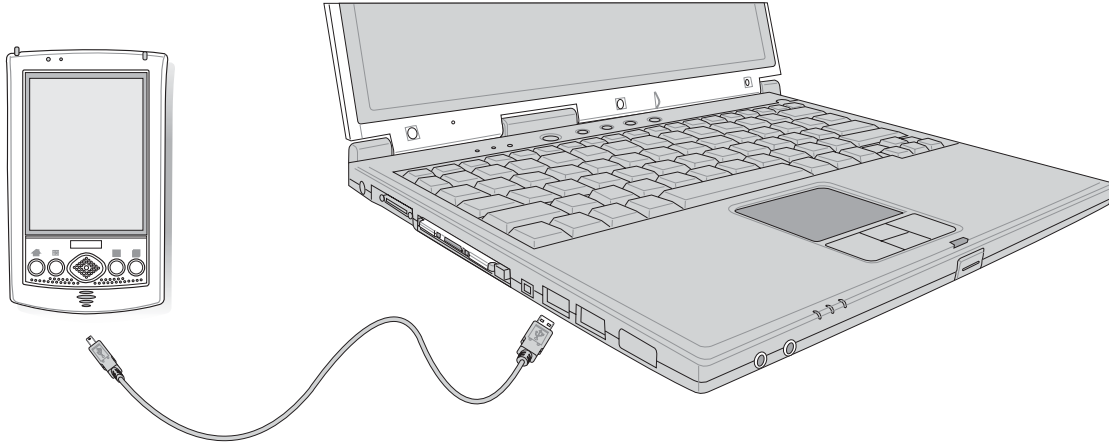
When you receive the Wireless LAN package, it should contain the following items:

- ASUS SpaceLink CF Card (Compact Flash Type II)
- User's Manual
- CD-ROM Disc (Windows/Linux drivers, utilities, manual)

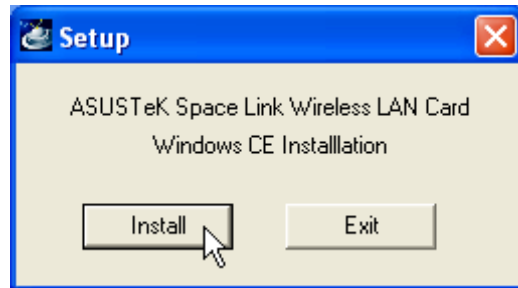
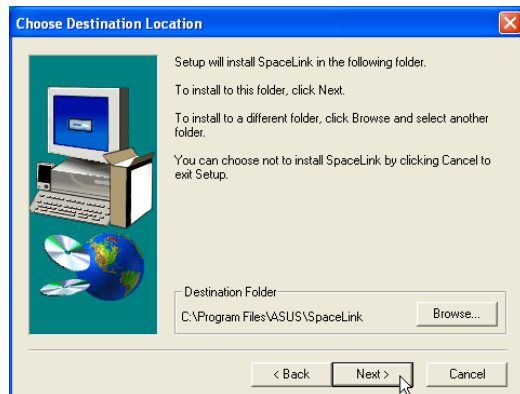
If any of the above items are not included or damaged, contact your local dealer for instructions.

Step 1 - Install the SpaceLink CF card utility

1. Connect your PDA to your computer.

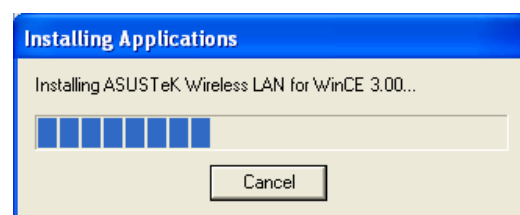
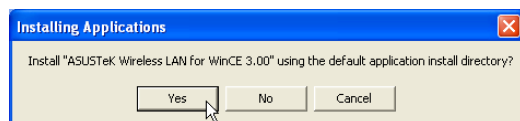


2. Run "Spacelink.exe" from the support CD.



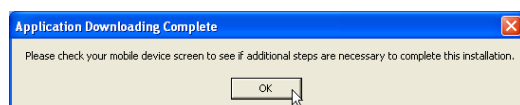
3. Click **Next** or browse to another folder.

4. Click **Install**.



5. Click **Yes** or No to install to another folder.

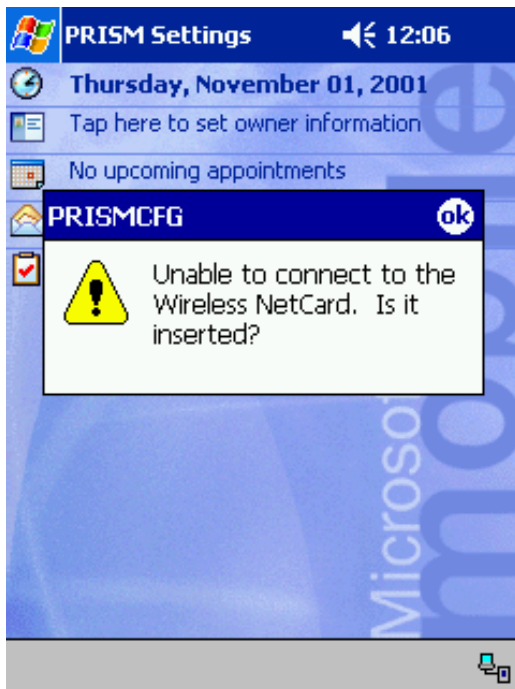
6. Wait for installation.



7. Click **OK** when complete.

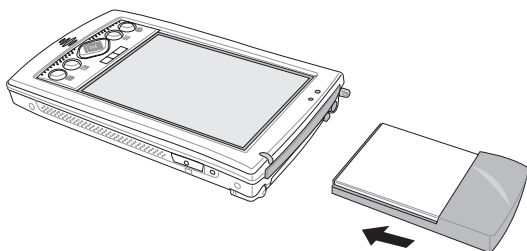
Chapter 2 - Installation

Step 2 - Insert the ASUS SpaceLink CF Card

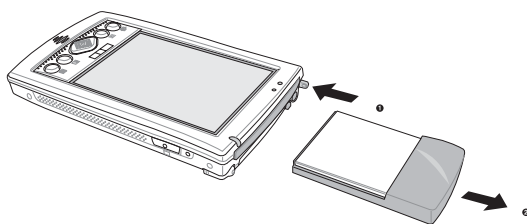


A message will show on your PDA:
Unable to connect to the Wireless NetCard. Is it inserted?

Insert the ASUS SpaceLink CF Card and soft reset or turn OFF and then turn ON your PDA.



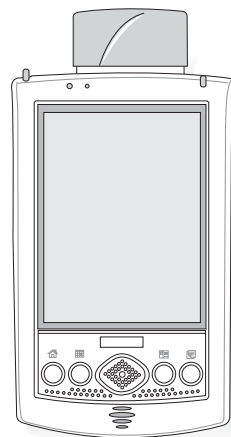
Inserting the ASUS SpaceLink CF Card



Removing the ASUS SpaceLink CF Card

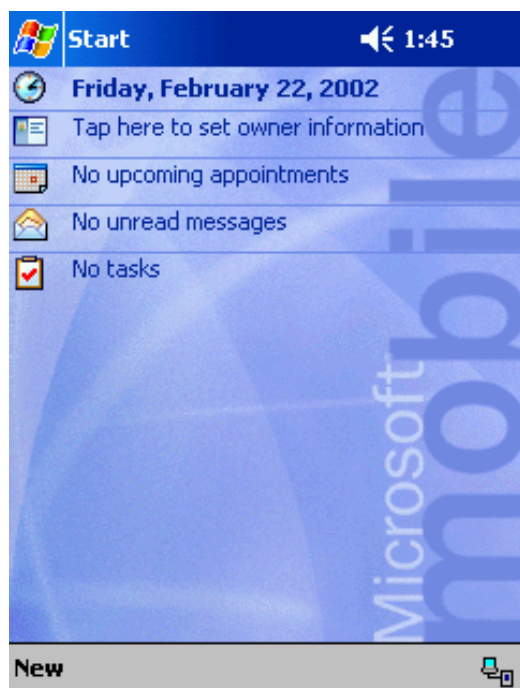


Setup your TCP/IP settings if necessary. The default uses DHCP. Click OK when done.

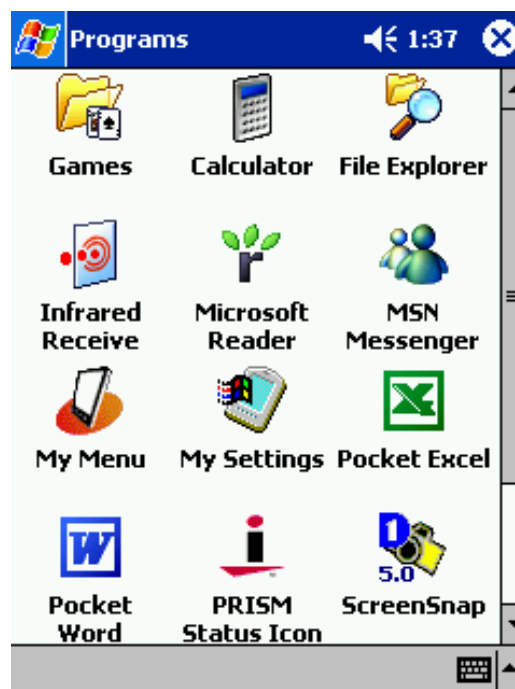


Note: These illustrations are examples only. Your PDA may look different and your CF slot may be on a different location. It is normal for the black plastic portion of the ASUS SpaceLink CF Card to not rest completely on the PDA.

Step 3 - Run the SpaceLink CF Card Utility



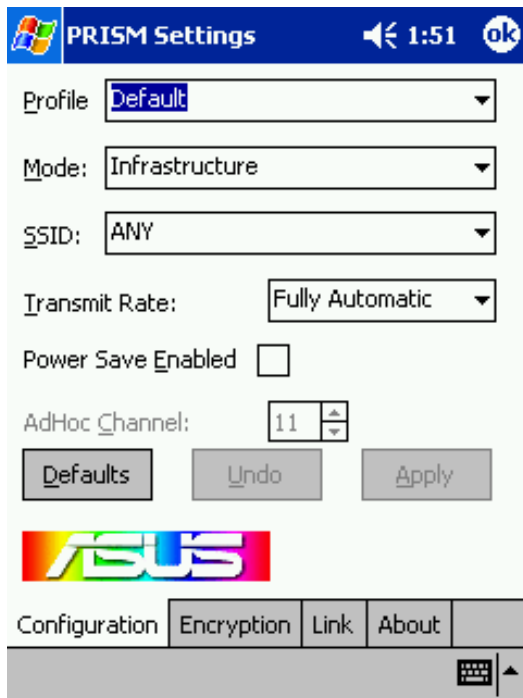
Using the Start button, open **Settings** or **Programs**.



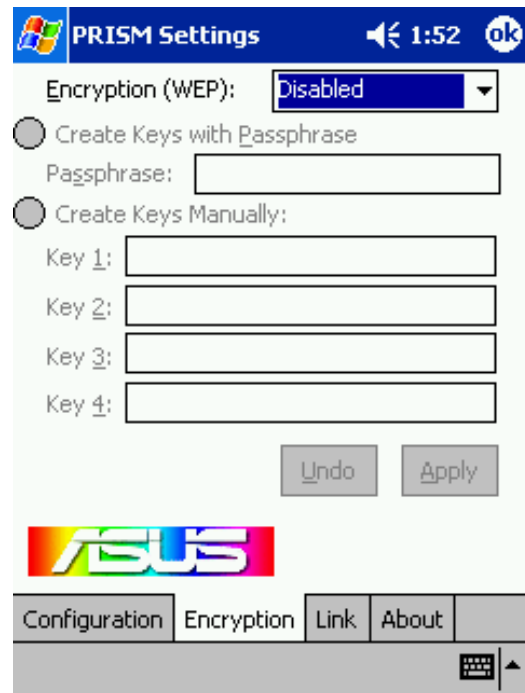
Run the PRISM utility either through **Settings** or through **Programs**.

Chapter 2 - Installation

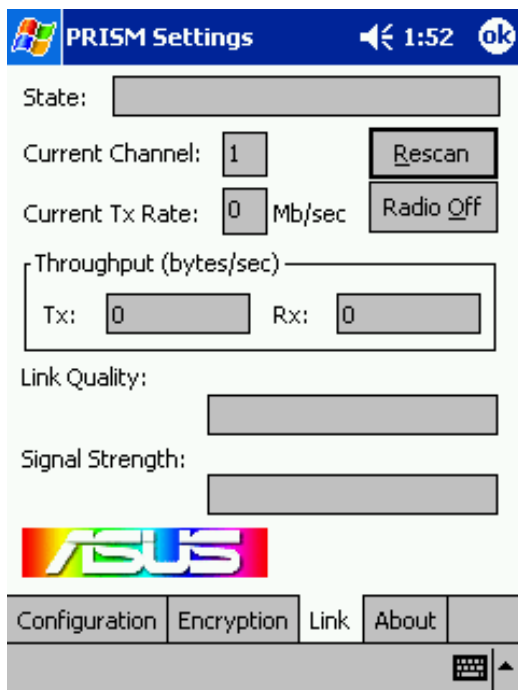
Step 4 - Setup the ASUS SpaceLink CF Card



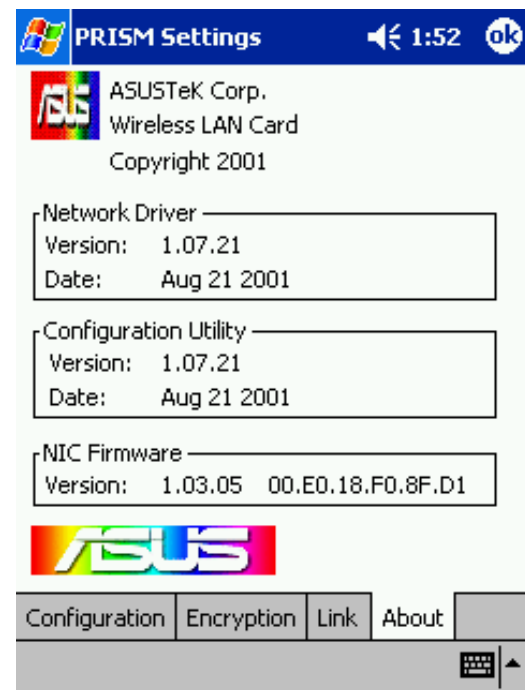
Click the **Configuration** tab and make settings if necessary.



Click the **Encryption** tab and make settings if necessary.

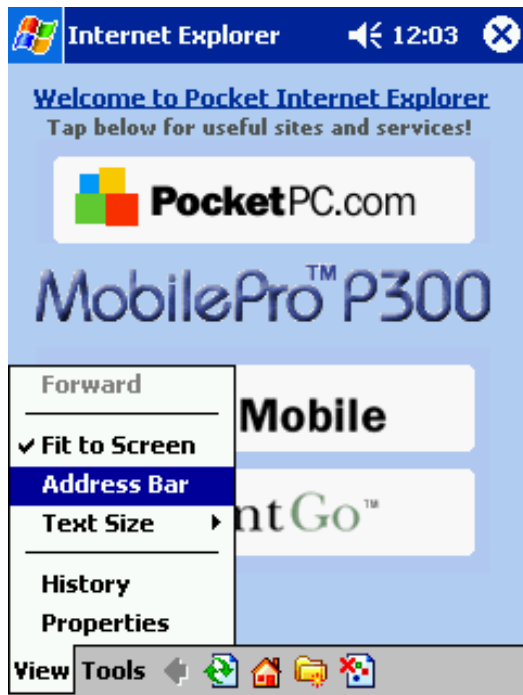


Click the **Link** tab and make settings if necessary.

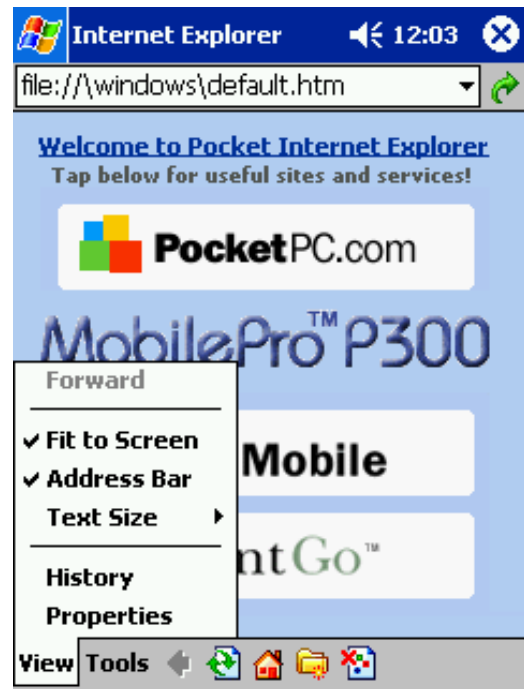


Click the **About** tab for version information.

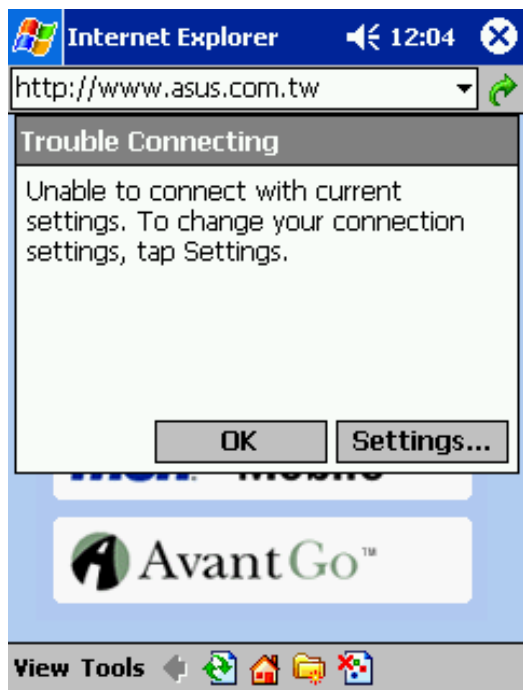
Step 5 - Run Your Internet Browser



Run Internet Explorer. By default, the Address Bar is hidden.



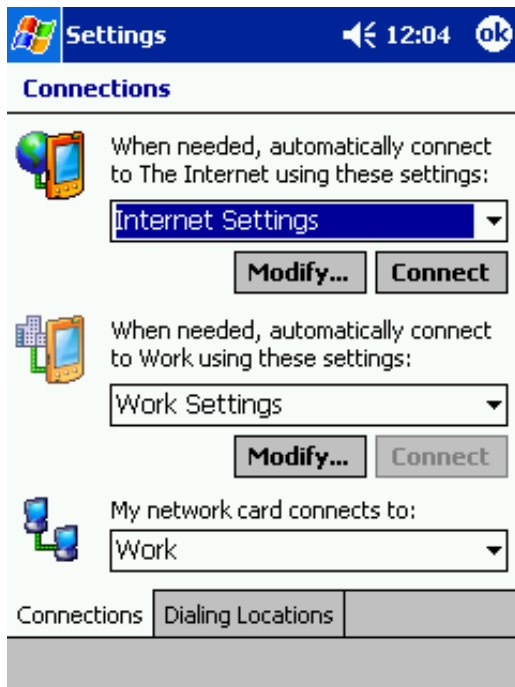
Select View Address Bar.



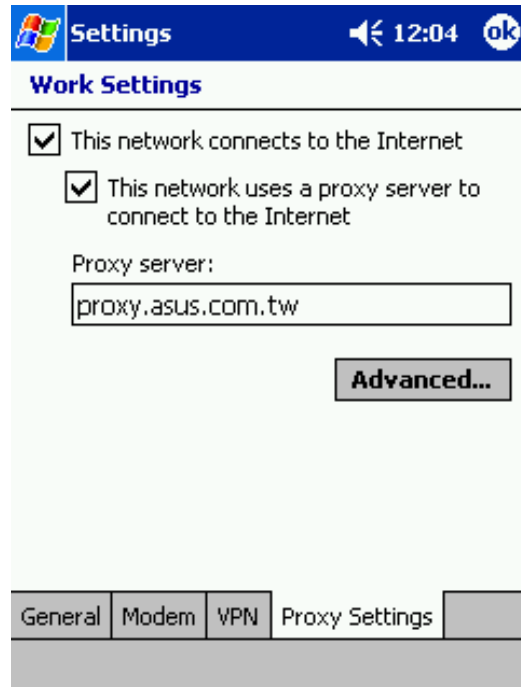
Enter a web address. If your settings are not complete, click **Settings** on this message.

Chapter 2 - Installation

Step 6 - Enter Your Connection Settings



You can also get here from **Start | Connections Tab | Connections Icon**. Click **Modify** to set **Proxy Settings**.



If proxy setting is necessary, check the two boxes and enter the proxy server address.



Now, you can enter a web address such as **www.asus.com.tw**

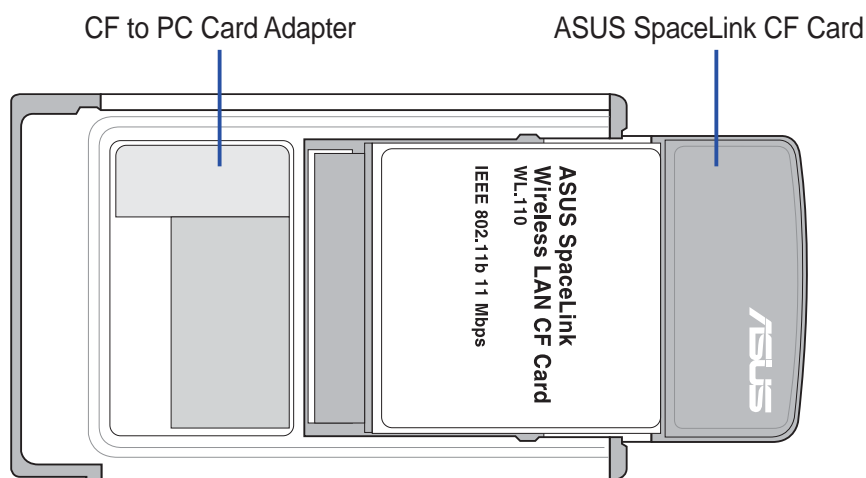


http:// will be automatically placed in front of the address.

Chapter 3 - Use in Notebook PCs

PC Card Compact Flash Adapter

The SpaceLink CF Card can be used in any computer (such as a Notebook PC) equipped with a Personal Computer Memory Card International Association (PCMCIA) Type II socket by adding a standard PC Card Compact Flash Adapter. ASUS SpaceLink CF Card, together with a PC Card Compact Flash Adapter, conforms to the PCMCIA release 2.x standard. The PC Card Compact Flash Adapter is also called a CF-to-PC Card Adapter and can be purchased at most computer stores for around 10 to 20USD.



Please refer to the SpaceLink “PC” Card User’s Manual in PDF format on the support CD for detailed information on installing and using the SpaceLink CF Card on Windows desktop platforms.
