

**ASUS®**

**EA-N66**  
双频无线以太网卡



快速使用指南

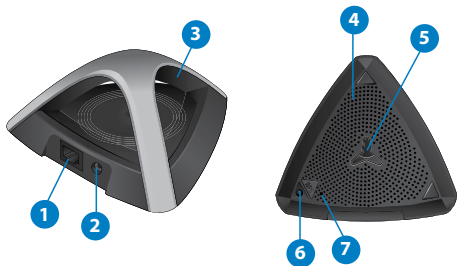
English.....	3
繁體中文.....	10
简体中文.....	17
Bahasa Indonesia.....	24
Bahasa Malaysia.....	31
<b>ไทย</b> .....	<b>38</b>

## 包装内容物

- ☑ EA-N66
- ☑ 电源适配器
- ☑ 网线
- ☑ 快速使用指南

注意：若以上列出的任一项目有损坏或缺少的情形，请尽快与您的经销商联系。

## 设备概观



- |                     |                 |
|---------------------|-----------------|
| 1) 以太网接口            | 4) 通风孔          |
| 2) 直流电源输入接口 (DC In) | 5) 安装孔          |
| 3) LED 指示灯          | 6) WPS 按钮       |
| 熄灭：没有电源或没有物理连接      | 7) 重置按钮 (Reset) |
| 灯亮：连接品质良好           |                 |
| 快闪：活动连接             |                 |
| 慢闪：连接品质差            |                 |

## 安装事宜

华硕 EA-N66 可如文件柜或书架一样安放在一个平坦的表面上，也可安装在墙面或天花板上。

1. 在底部找到安装挂钩。
2. 在平坦的表面上标出一个孔位。
3. 拧入一颗螺丝，直到它只露出 1/4”。
4. 将 EA-N66 的安装挂钩挂到螺丝上。



注意：

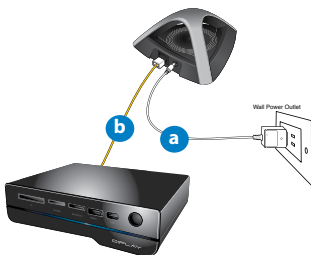
- 若无法将 EA-N66 挂到螺丝上或太松，重新调整螺丝。
- EA-N66 包装中不包含螺丝。

## 连接到网络

### A. 使用 WPS 按钮连接

WPS (Wi-Fi Protected Setup) 按钮可让您连接到一个受保护的安全网络。

- a. 将 EA-N66 的电源适配器插入 DC-In 电源接口，并连接到电源插座。
- b. 使用附赠的网线连接您的 HD 媒体播放器、网络电视、机顶盒，或其他开启以太网功能的设备至 EA-N66 的以太网接口。



- c. 按下 EA-N66 上的 WPS 按钮。
- d. 确保 LED 指示灯正在闪烁。



- e. 按下路由器上的 WPS 按钮。

注意：请参阅路由器的用户手册找到 WPS 按钮的位置。

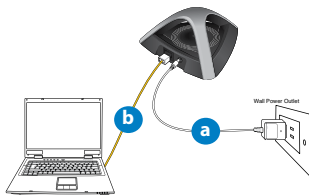
- f. 查看 EA-N66 的 LED 指示灯是否变为蓝色常亮，这表示 EA-N66 已成功连接至无线网络。

注意：关于 LED 指示灯的详细信息，请参阅第 3 页的说明。



## B. 不使用 WPS 按钮连接

- 将 EA-N66 的电源适配器插入 DC-In 电源接口，并连接到电源插座。
- 使用附赠的网线连接您的电脑至 EA-N66 的以太网接口。
- 在网络浏览器中，输入“[www.asusnetwork.net](http://www.asusnetwork.net)”，然后输入默认的用户名与密码：admin/admin。
- 按照屏幕指示完成无线连接设置。



- 查看 EA-N66 的 LED 指示灯是否变为蓝色常亮，这表示 EA-N66 已成功连接至无线网络。

注意：关于 LED 指示灯的详细信息，请参阅第 3 页的说明。

- 从您的电脑上断开网线，并将它连接至已开启以太网功能的设备，如 HD 媒体播放器、网络电视、机顶盒与其他设备。

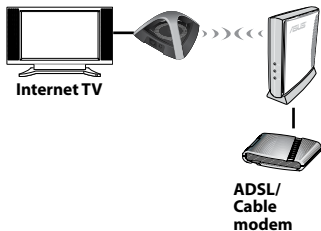
## 运行模式

华硕 EA-N66 具有三种运行模式：无线网卡、无线访问点（AP）与中继模式。

注意：请按照网页界面（GUI）设置向导设置这三种模式。

### 无线网卡模式

默认情况下，EA-N66 处于无线网卡模式。在此模式下，您可以通过无线路由器将开启以太网功能的设备连接到您的家庭无线网络。此模式适用于家庭剧院设备，如网络电视，TiVo 与蓝光播放器等。



重要：

- 为了得到最佳无线性能，请将 EA-N66 放置在离访问点（AP）超过 1.5 米远的位置。
- 您可以从 EA-N66 的网页用户界面中调整传输电能。

## 常见问题解答

### Q1: 我无法访问网页图形用户界面 (web GUI) 来设置 EA-N66。

- 关闭所有正在运行的网络浏览器，并重新启动。
- 依据不同的操作系统，按照以下步骤设置您的电脑。

#### Windows 7

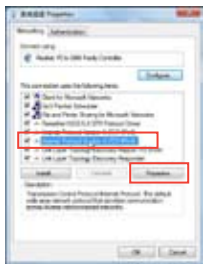
A. 若 proxy 服务器开启，请关闭。

1. 点击【开始】>【Internet Explorer】，开启网络浏览器。
2. 点击【工具】>【Internet 选项】>“连接”标签页 >【局域网设置】。
3. 在“局域网设置”画面中，取消勾选“在您的局域网使用代理服务器”核选框。
4. 完成后，按一下【确定】。



B. 将 TCP/IP 设置为自动取得 IP 地址。

1. 点击【开始】>【控制面板】>【网络和 Internet 连接】>【网络和共享中心】>【管理网络连接】。
2. 选择“Internet 通讯协议第 4 版 (TCP/IPv4)”，然后按一下【属性】。
3. 勾选“自动取得 IP 地址”。
4. 完成后，按一下【确定】。






## Mac 10.5.8

A. 若 proxy 服务器开启，请关闭。

1. 在菜单栏中，点击【Safari】>【偏好设置...】>“高级”标签页。
2. 按一下【变更设置...】。
3. 在协议列表中，取消选择“FTP Proxy”与“Web Proxy (HTTP)”。
4. 完成后，按一下【确定】。



B. 将 TCP/IP 设置为自动取得 IP 地址。

1. 点击 Apple 图标  >【系统偏好设置】>【网络】。
2. 在设置区域中，选择 Internet 并选择使用 DHCP。
3. 完成后，按一下【应用】。



## Q2: 我是否需要把 EA-N66 与所连接的访问点 (AP) 的 SSID 与加密设置为相同?

- 若将 EA-N66 设为中继模式，您需要为 EA-N66 与连接的访问点 (AP) 设置相同的 SSID 与加密/验证设置。此举会扩展您的网络的无线信号覆盖范围。

## SUPPORT HOTLINE

### USA/ CANADA

Hotline Number: 1-812-282-2787

Language: English

Availability: **Mon. to Fri.**  
8:30-12:00am EST  
(5:30am-9:00pm PST)

**Sat. to Sun.**  
9:00am-6:00pm EST  
(6:00am-3:00pm PST)

### BRAZIL

Hotline Number: 4003 0988  
(Capital) / 0800 880 0988 (demais localidades)

Language: Portuguese

Availability: **Mon. to Fri.**  
9:00am-18:00

### Manufacturer

#### ASUSTeK Computer Inc.

Tel: +886-2-2894-3447

Address: No. 150, LI-TE RD., PEITOU, TAIPEI 112, TAIWAN

### Authorised representative in Europe

#### ASUS Computer GmbH

Address: HARKORT STR. 21-23, 40880 RATINGEN, GERMANY

### Authorised distributors in Turkey

#### BOGAZICI BIL GISAYAR SAN. VE TIC. A.S.

Tel: +90 212 3311000

Address: AYAZAGA MAH. KEMERBURGAZ CAD. NO.10 AYAZAGA/ISTANBUL

#### CIZGI Elektronik San. Tic. Ltd. Sti.

Tel: +90 212 3567070 Address: CEMAL SURURI CD. HALIM MERIC IS MERKEZI

No: 15/C D:5-6 34394 MECIDIYEKÖY/ ISTANBUL

EEE Yönetmeliğine Uygundur.

## ASUS Recycling/Takeback Services

ASUS recycling and takeback programs come from our commitment to the highest standards for protecting our environment. We believe in providing solutions for you to be able to responsibly recycle our products, batteries, other components, as well as the packaging materials. Please go to <http://csr.asus.com/english/Takeback.htm> for the detailed recycling information in different regions.

## REACH

Complying with the REACH (Registration, Evaluation, Authorisation, and Restriction of Chemicals) regulatory framework, we published the chemical substances in our products at ASUS REACH website at <http://csr.asus.com/english/REACH.htm>

## Federal Communications Commission Statement

This device complies with Part 15 of the FCC Rules. Operation is subject to the following two conditions:

- This device may not cause harmful interference.
- This device must accept any interference received, including interference that may cause undesired operation.

This equipment has been tested and found to comply with the limits for a class B digital device, pursuant to part 15 of the FCC Rules. These limits are designed to provide reasonable protection against harmful interference in a residential installation.

This equipment generates, uses and can radiate radio frequency energy and, if not installed and used in accordance with the instructions, may cause harmful interference to radio communications. However, there is no guarantee that interference will not occur in a particular installation. If this equipment does cause harmful interference to radio or television reception, which can be determined by turning the equipment off and on, the user is encouraged to try to correct the interference by one or more of the following measures:

- Reorient or relocate the receiving antenna.

- Increase the separation between the equipment and receiver.
- Connect the equipment into an outlet on a circuit different from that to which the receiver is connected.
- Consult the dealer or an experienced radio/TV technician for help.

.....  
**WARNING:** Any changes or modifications not expressly approved by the party responsible for compliance could void the user's authority to operate the equipment. Prohibition of Co-location This device and its antenna(s) must not be co-located or operating in conjunction with any other antenna or transmitter.  
.....

## Prohibition of Co-location

This device and its antenna(s) must not be co-located or operating in conjunction with any other antenna or transmitter.

### IMPORTANT NOTE:

**Radiation Exposure Statement:** This equipment complies with FCC radiation exposure limits set forth for an uncontrolled environment. End users must follow the specific operating instructions for satisfying RF exposure compliance. To maintain compliance with FCC exposure compliance requirement, please follow operation instruction as documented in this manual.

## Declaration of Conformity for R&TTE directive 1999/5/EC

Essential requirements – Article 3

Protection requirements for health and safety – Article 3.1a

Testing for electric safety according to EN 60950-1 has been conducted. These are considered relevant and sufficient.

Protection requirements for electromagnetic compatibility – Article 3.1b

Testing for electromagnetic compatibility according to EN 301 489-1 and EN 301 489-17 has been conducted. These are considered relevant and sufficient.

Effective use of the radio spectrum – Article 3.2

Testing for radio test suites according to EN 300 328- 2 has been conducted. These are considered relevant and sufficient.

## CE Mark Warning

This is a Class B product, in a domestic environment, this product may cause radio interference, in which case the user may be required to take adequate measures. Operation Channels: CH1~11 for N. America; Ch1~14 for Japan; CH1~13 for Europe (ETSI)

## IC Warning

This device complies with Industry Canada licence-exempt RSS standard(s). Operation is subject to the following two conditions: (1) this device may not cause interference, and (2) this device must accept any interference, including interference that may cause undesired operation of the device."

Le présent appareil est conforme aux CNR d'Industrie Canada applicables aux appareils radio exempts de licence. L'exploitation est autorisée aux deux conditions suivantes : (1) l'appareil ne doit pas produire de brouillage, et (2) l'utilisateur de l'appareil doit accepter tout brouillage radioélectrique subi, même si le brouillage est susceptible d'en compromettre le fonctionnement."

## Industry Canada Statement

This device complies with RSS-210 of the industry Canada Rules. Operation is subject to the following two conditions:

- This device may not cause harmful interference.
- This device must accept any interference received, including interference that may cause undesired operation.

## IMPORTANT NOTE:

**Radiation Exposure Statement:** This equipment complies with IC radiation exposure limits set forth for an uncontrolled environment. End users must follow the specific operating instructions for satisfying RF exposure compliance. To maintain compliance with IC RF exposure compliance requirement, please follow operation instruction as documented in this manual.

## NCC 警語

經型式認證合格之低功率射頻電機，非經許可，公司、商號或使用者均不得擅自變更頻率、加大功率或變更原設計之特性及功能。

低功率射頻電機之使用不得影響飛航安全及干擾合法通信；經發現有干擾現象時，應立即停用，並改善至無干擾時方得繼續使用。

前項合法通信，指依電信法規定作業之無線電通信。

低功率射頻電機須忍受合法通信或工業、科學及醫療用電波輻射性電機設備之干擾。

## Safety Warning

SAFE TEMP: This wireless router should be only used in environments with ambient temperatures between 5°C (41°F) and 40°C (104°F).

DO NOT expose to or use near liquids, rain, or moisture. DO NOT use during electrical storms.