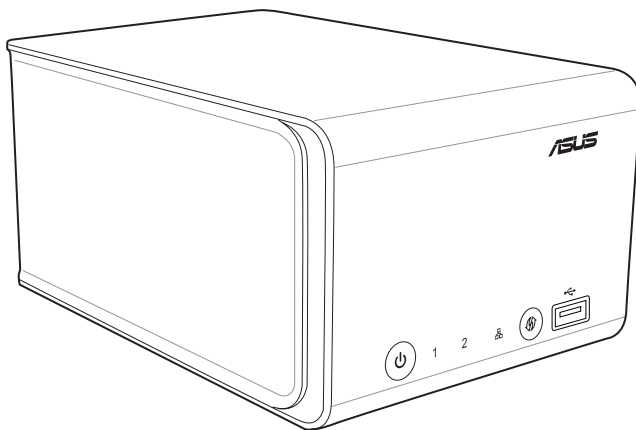




NAS-M25

**All-in-One Server for Data Protection,
File Download, and Media Share**



User Manual





E6146

Second Edition

October 2010

Copyright © 2010 ASUSTeK Computer Inc. All Rights Reserved.

No part of this manual, including the products and software described in it, may be reproduced, transmitted, transcribed, stored in a retrieval system, or translated into any language in any form or by any means, except documentation kept by the purchaser for backup purposes, without the express written permission of ASUSTeK Computer Inc. ("ASUS").

Product warranty or service will not be extended if: (1) the product is repaired, modified or altered, unless such repair, modification or alteration is authorized in writing by ASUS; or (2) the serial number of the product is defaced or missing.

ASUS PROVIDES THIS MANUAL "AS IS" WITHOUT WARRANTY OF ANY KIND, EITHER EXPRESS OR IMPLIED, INCLUDING BUT NOT LIMITED TO THE IMPLIED WARRANTIES OR CONDITIONS OF MERCHANTABILITY OR FITNESS FOR A PARTICULAR PURPOSE. IN NO EVENT SHALL ASUS, ITS DIRECTORS, OFFICERS, EMPLOYEES OR AGENTS BE LIABLE FOR ANY INDIRECT, SPECIAL, INCIDENTAL, OR CONSEQUENTIAL DAMAGES (INCLUDING DAMAGES FOR LOSS OF PROFITS, LOSS OF BUSINESS, LOSS OF USE OR DATA, INTERRUPTION OF BUSINESS AND THE LIKE), EVEN IF ASUS HAS BEEN ADVISED OF THE POSSIBILITY OF SUCH DAMAGES ARISING FROM ANY DEFECT OR ERROR IN THIS MANUAL OR PRODUCT.

SPECIFICATIONS AND INFORMATION CONTAINED IN THIS MANUAL ARE FURNISHED FOR INFORMATIONAL USE ONLY, AND ARE SUBJECT TO CHANGE AT ANY TIME WITHOUT NOTICE, AND SHOULD NOT BE CONSTRUED AS A COMMITMENT BY ASUS. ASUS ASSUMES NO RESPONSIBILITY OR LIABILITY FOR ANY ERRORS OR INACCURACIES THAT MAY APPEAR IN THIS MANUAL, INCLUDING THE PRODUCTS AND SOFTWARE DESCRIBED IN IT.

Products and corporate names appearing in this manual may or may not be registered trademarks or copyrights of their respective companies, and are used only for identification or explanation and to the owners' benefit, without intent to infringe.





Table of contents

Safety information	7
Electrical safety	7
Operation safety	7

Chapter 1: Knowing your NAS

1.1	Package contents	8
1.2	System requirements	8
1.3	NAS-M25 specifications summary.....	9
1.3.1	Hardware specifications	9
1.3.2	Software specifications	10
1.4	Hardware overview	12
1.4.1	Front view	12
1.4.2	Bottom view	13
1.4.3	Back view	14
1.5	Software overview	15
1.5.1	Setup Wizard	15
1.5.2	Firmware Restoration	15
1.5.3	NAS Discovery	16
1.5.4	TotalRecovery™ Pro	16
1.5.5	VirtualDrive® Pro	16

Chapter 2: Setting up your NAS

2.1	Setting up the hardware	17
2.1.1	Installing a 3.5" SATA hard disk	17
2.1.2	Connecting your NAS to a power source.....	22
2.1.3	Turning your NAS ON/OFF	22
2.1.4	Connecting your NAS to a Local Area Network (LAN).....	23
2.2	Installing the software	23





Table of contents

2.3	Running Setup Wizard	24
2.4	Knowing the NAS network folder	28
2.4.1	Knowing the default folders	28
2.4.2	Having full control over the NAS network folder	28

Chapter 3: Managing your NAS via its Web GUI

3.1	Logging in the Web GUI	29
3.2	Knowing the Home screen	31
3.3	Using Configuration Center	32
3.3.1	Running Setup Wizard	32
3.3.2	Configuring your hard disks	33
3.3.3	Monitoring your hard disks with S.M.A.R.T	34
3.3.4	Enabling the FTP server	35
3.3.5	Enabling the DHCP server	36
3.3.6	Enabling the NFS server	37
3.3.7	Enabling the iTunes server	38
3.3.8	Enabling the Printer server	39
3.3.9	Configuring the IP / DNS / JumboFrame settings	40
3.3.10	Joining a Windows® workgroup or domain	41
3.3.11	Creating a user account	42
3.3.12	Creating a user group	43
3.3.13	Creating a shared folder	44
3.3.14	Assigning hard disk quotas	45
3.3.15	Setting the administrator password	47
3.3.16	Saving / loading / restoring system settings	47
3.3.17	Upgrading the firmware	48
3.3.18	Enabling the e-mail alert service	49
3.3.19	Copying your USB data to NAS	50





Table of contents

3.3.20	Shutting down / restarting / putting NAS on Sleep mode.....	51
3.3.21	Turning off your hard disk drives.....	52
3.3.22	Unmounting a USB 2.0 device	53
3.3.23	Checking the system / hard disk / printer status.....	54
3.3.24	Changing the NAS sharing permission	56

Chapter 4: Sharing folders and a printer

4.1	Sharing folders via the FTP server	57
4.2	Sharing folders via the NFS server.....	58
4.3	Sharing folders via the Samba server.....	58
4.4	Sharing multimedia files via the Twonky UPnP server.....	59
4.5	Sharing music via the iTunes server	60
4.6	Sharing a USB 2.0 printer via Printer server	61

Chapter 5: Backing up your data

5.1	Using TotalRecovery™ Pro	63
5.2	Using the RAID 1 technology.....	63
5.3	Backing up your USB data to NAS	63
5.3.1	Copying front/back USB data via the Web GUI.....	63
5.3.2	Copying front USB data via One Touch Copy	64

Chapter 6: Using the add-in applications

6.1	Installing the add-in applications.....	65
6.2	Using File Download	66
6.3	Using BT Client	67
	Uploading torrent files to your NAS.....	67
6.4	Using File Manager	68
	Browsing files and folders.....	68





Table of contents

Chapter 7: Managing torrent files via your Android device

7.1	Managing torrent files via your Android device.....	69
-----	---	----

Chapter 8: FAQ (Frequently Asked Questions)

8.1	FAQ (Frequently Asked Questions)	70
-----	--	----

Appendices

	Notices.....	74
	ASUS contact information.....	81
	Authorized distributor information	82





Safety information

Electrical safety

- Unplug this product from the power source before cleaning.
- Use only the bundled power adapter. Using other power adapters may damage your device.
- Ensure that you plug the power adapter to the correct power input rating. Check the label on the power adapter for the power rating.

Operation safety

- DO NOT place this product in a location where it may get wet.
- Place this product on a flat and stable surface.
- Use this product in environments with an ambient temperature between 0°C and 40°C.
- DO NOT block the air vents on the case of this product. Always provide proper ventilation for this product.
- DO NOT insert any object or spill liquid into the air vents.
- If you encounter technical problems with this product, contact a qualified service technician or your retailer. DO NOT attempt to repair this product yourself.



DO NOT throw this product in municipal waste. This product has been designed to enable proper reuse of parts and recycling. This symbol of the crossed out wheeled bin indicates that the product (electrical and electronic equipment) should not be placed in municipal waste. Check local regulations for disposal of electronic products.





Chapter 1

Knowing your NAS

1.1 Package contents

Check your NAS package for the following items.

- ASUS NAS-M25 x1
- Power cord x1
- SATA hard disk screw x4
- Support CD (user manual, utilities) x2
- Power adapter x1
- SATA hard disk handle x2
- RJ-45 cable x1
- Quick Start Guide x1



NOTE:

If any of the above items is damaged or missing, contact your retailer.

1.2 System requirements

- One administrative computer
 - 1.2GHz CPU or higher
 - Network adapter
 - Optical disk drive
 - Windows® 7 / Vista / XP operating system
 - Windows® Internet Explorer 7.0 or later; Mozilla Firefox
- One network router, switch, or wall LAN jack
- One or two 3.5" SATA I/II hard disks





1.3 NAS-M25 specifications summary

1.3.1 Hardware specifications

Processor	Marvell® 1.2GHz ARM Processor
Memory	512MB DDR2 SDRAM, 128MB flash memory
HDD bays	3.5" SATA I/II bays x2 Max. capacity: 4TB (2TB SATA I/II disks x2) NOTE: SATA I/II hard disk drives are purchased separately and are not included in the package.
LAN port	Gigabit Ethernet port x1
USB port	USB 2.0 port x3
LED indicators	Power LED x1 USB LED x1 HDD LED x2 Network LED x1
Dimensions	211(D) x 129(W) X 120(H) mm
Power supply	AC Input: 100~240VAC / 1.2A 50~60Hz DC Output: 12V/3A; 5V/3A
Cooling fan	Smart Fan x1 with fan speed control
Environment requirements	Operating temperature: 0°C ~ 40°C (32°F ~ 104°F) Operating humidity: 5% ~ 95% RH Storage temperature: -10°C ~ 70°C (14°F ~ 158°F) Storage humidity: 5% ~ 95% RH





1.3.2 Software specifications

Administrator	Windows® 7 / Vista / XP Windows® Internet Explorer 7.0 or later, Mozilla Firefox
Network clients	Windows® 7 / Vista / XP Mac OS X v10.3 or later Linux
Internal HDD	Volume type Standard (Single Disk), JBOD, RAID 1, RAID 0 File system type EXT2, EXT3 (Read/Write) Data protection tools RAID 1 Auto Rebuild Disk status monitoring via S.M.A.R.T Folder sharing Samba server, FTP server, NFS server, iTunes server, Media server
External USB storage device	File system type FAT32 (Read/Write) NTFS (Read only) USB data backup tools One Touch Copy
Network file protocol	FTP, SMB/CIFS, NFS v2/v3
User management	Max. user accounts: 64 (Samba) / 1000 (ADS) Max. user groups: 10 (Samba) / 100 (ADS) Quota control
System management	Power-saving mode Firmware upgrade via the Web GUI Back up / restore / upload system settings via the Web GUI System monitoring via E-mail alerts Network recycle bin Event log NTP server Overheating protection with the thermal sensor

(Continued on the next page)





Backup tools	Farstone® TotalRecovery™ Pro One Touch Copy
Software Add-Ins	Install the software packages to add new functions.
FTP server	FTP over explicit SSL/TLS mode FTP bandwidth and connection control Unicode support
Twonky UPnP Server	Supports DLNA client Audio type: mp3, mp4a, 3gp, wav, wma, ogg, flac, aac, aif Video type: MPEG1, MPEG2, MPEG2-TS, MPEG4, AVI, WMV, VOB, DivX, 3GP, VDR, ASF, MPE, DVR-MS, Xvid, MIV, M4V Playlist type: m3u, pls, wpl Photo type: JPG, BMP, PNG, TIF For PS3 Audio type: MP3, WAV, WMA Video type: MPEG2 Photo type: JPG, BMP, GIF, TIF, PNG For Xbox 360 Audio type: MP3, WMA Video type: WMV Photo type: JPG
iTunes server	Share music with iTunes clients on the LAN.
Printer server	Windows® network printer service

**NOTE:**

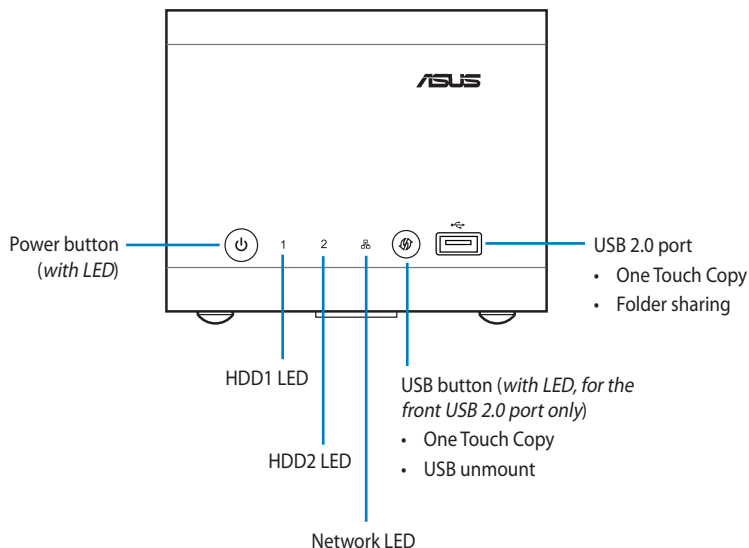
Specifications are subject to change without prior notice.





1.4 Hardware overview

1.4.1 Front view



Front buttons / ports

Power button (with LED)	<ul style="list-style-type: none">• Press and hold until the power LED starts blinking blue to turn NAS ON.• Press and hold for more than five seconds until the power LED starts blinking blue to turn NAS OFF.
USB button (with LED, for the front USB 2.0 port only)	<ul style="list-style-type: none">• One Touch Copy Press to copy data from the front USB 2.0 device to NAS. See 5.3.2 Copying front USB data via One Touch Copy for details.• USB unmount Press and hold for more than three seconds until the USB LED turns OFF to unmount the front USB 2.0 device.
USB 2.0 port	<ul style="list-style-type: none">• One Touch Copy Connect a USB 2.0 device such as a digital camera and USB flash drive to this port and press the USB button to copy data from it to NAS.• Folder sharing Connect a USB flash drive or USB HDD to this port to add extra storage capacity for folder sharing.

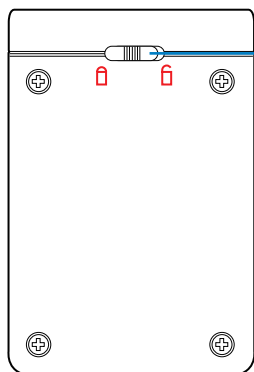






LED indications

LED	Status	Description
Power LED	Solid blue	Power is ON and NAS is ready for use.
	Blinking blue	NAS is booting up / shutting down / restoring to its factory default settings.
	OFF	Power is OFF.
HDD1 / HDD2 LED	Solid blue	HDD is present in normal mode.
	Blinking blue	Data is being transferred.
	Solid green	NAS is in Sleep mode or Rescue mode.
	Solid red	HDD is installed but fails or new HDD is installed.
	Blinking red	HDD free space is lower than 10%.
	OFF	Power is OFF or no HDD is installed.
Network LED	Solid blue	NAS is connected to a network.
	Blinking blue	Data is being transferred.
	OFF	Power is OFF or NAS is not connected to a network.
USB LED (for the front USB 2.0 port only)	Solid blue	A front USB 2.0 device is detected.
	Blinking blue	Data is being copied from the front USB 2.0 device to NAS via One Touch Copy.
	OFF	Power is OFF or no front USB 2.0 device is detected.

1.4.2 Bottom view




Front panel lock

- Before inserting a SATA hard disk, slide this lock to  (unlocked position) and disengage the front panel from the NAS case.
- After inserting a SATA hard disk, engage the front panel with the NAS case and slide this lock to  (locked position) to secure the front panel to the NAS case.



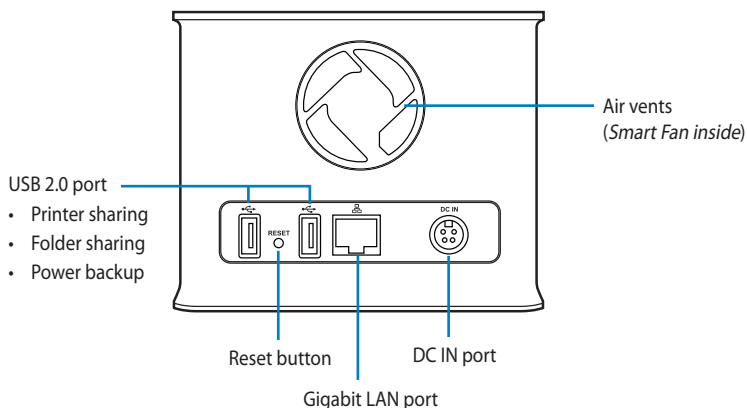
IMPORTANT:

The NAS cannot be powered ON if this lock is not set to  (locked position).





1.4.3 Back view



Back buttons / ports

Reset button	Press and hold for more than five seconds until the power LED starts blinking blue to restore NAS to its original factory default settings.
Gigabit LAN port	Connects to a Local Area Network (LAN) or directly to a computer via an RJ-45 cable.
USB 2.0 port	<ul style="list-style-type: none">• Printer sharing Connect a USB printer to this port and share it with LAN clients. See 4.6 Sharing a USB 2.0 printer via Printer server for details.• Folder sharing Connect a USB flash drive or USB HDD to this port to add extra storage capacity for folder sharing.• Power backup Connect an uninterruptible power supply (UPS) to this port to monitor the UPS status.
DC IN port	Insert the supplied power adapter into this port.
Air vents (Smart Fan inside)	DO NOT block these air vents. The Smart Fan inside automatically adjusts its speed according to the system loading and temperature, providing proper ventilation while lowering noise.



IMPORTANT:

Unmount your USB 2.0 device before removing it from your NAS, otherwise you might lose your data on the USB 2.0 device.

To unmount a USB 2.0 device:

- For the front USB 2.0 port, press and hold the USB button for more than three seconds.
- For the back USB 2.0 ports, use the Web GUI. See **3.3.22 Unmounting a USB 2.0 device** for details.





1.5 Software overview

The bundled Support CD contains some utilities that you can use to manage your NAS and back up your data. See the succeeding sections for the descriptions on the utilities included in the Support CD.



NOTE:

See **2.2 Installing the software** for how to install the utilities on your computer.

1.5.1 Setup Wizard

Setup Wizard guides you through configuring the basic settings that you need to configure before you can start using your NAS. See **2.3 Running Setup Wizard** for details.

1.5.2 Firmware Restoration

Firmware Restoration is used on an ASUS NAS that fails during its firmware upgrading process. It uploads the firmware that you specify.



IMPORTANT:

DO NOT use this utility on a working ASUS NAS. Normal firmware upgrades must be done via the Web GUI. See **3.3.17 Upgrading the firmware** for details.



NOTE:

Firmware Restoration can only restore the firmware when your NAS is in the rescue mode. To enter the rescue mode, follow these steps:

1. Turn off your NAS.
2. Press and hold the reset button at the rear side and simultaneously press the power button to turn on your NAS.
3. Release the reset button when the power LED is off the network LED is blinking.
4. From your computer's desktop, click **Start > All Programs > ASUS Utility > NAS-M25 > Firware Restoration**.



1.5.3 NAS Discovery

NAS Discovery allows you to find the IP and MAC addresses of your NAS, log in the Web GUI of your NAS, and map a network drive.



Click to refresh the list of devices found.

List of devices found with the IP and MAC addresses displayed

Click to map a network drive. This button functions only when you have finished setting up your NAS. See **Chapter 2: Setting up your NAS** for how to set up your NAS.

Click to launch the login page of the NAS Web GUI. See **Chapter 3: Managing your NAS via its Web GUI** for how to manage your NAS via the Web GUI.

1.5.4 TotalRecovery™ Pro

FarStone® TotalRecovery™ Pro offers comprehensive backup solutions including hard drive imaging, system snapshots, incremental backup, and Universal Restore. Refer to the TotalRecovery™ Pro user manual included in the Support CD for details.

1.5.5 VirtualDrive® Pro

FarStone® VirtualDrive® Pro allows you to run a CD/DVD game or application without loading the physical disc in the optical drive. It also offers a Virtual Hard Drive that enables you to run files and applications much faster. Refer to the VirtualDrive® Pro user manual included in the Support CD for details.

Chapter 2

Setting up your NAS

2.1 Setting up the hardware

2.1.1 Installing a 3.5" SATA hard disk




IMPORTANT:

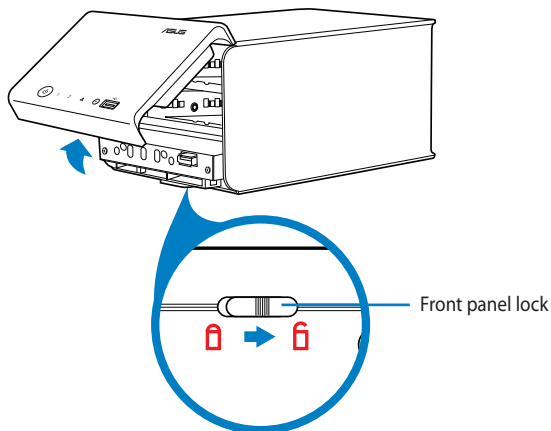
- Number of hard disks required by different volume types

Volume type	Number of hard disks required
Standard	1
JBOD, RAID 0, RAID 1	2

- See **2.3 Running Setup Wizard** for details about volume types.

To install a 3.5" SATA hard disk:

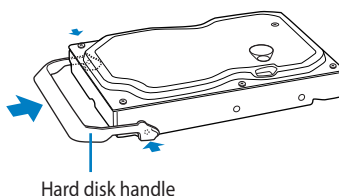
1. Slide the front panel lock at the bottom of your NAS to  (unlocked position) and unlock the front panel from the NAS case.



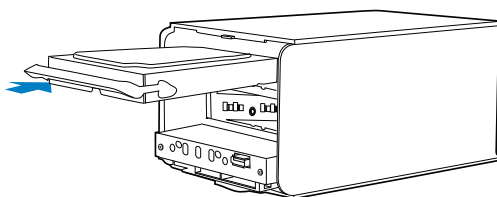



** 3.5" hard disks vary in height. If your 3.5" hard disk's height matches the NAS drive bay's height, follow the steps below.*

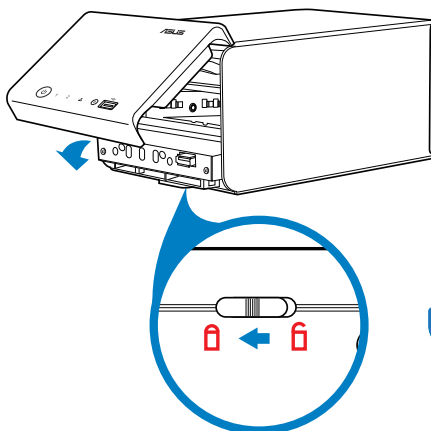
2. Install the bundled hard disk handle on your hard disk.




3. Using the hard disk handle, push the hard disk into a drive bay until it is firmly positioned.



4. Close the front panel and slide the front panel lock to  (locked position).




IMPORTANT:

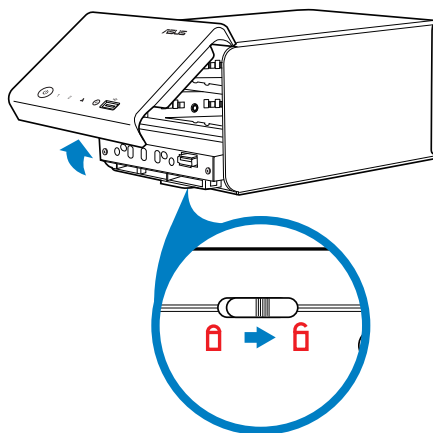
Ensure to slide the front panel lock back to  (locked position), otherwise the NAS cannot be powered ON.



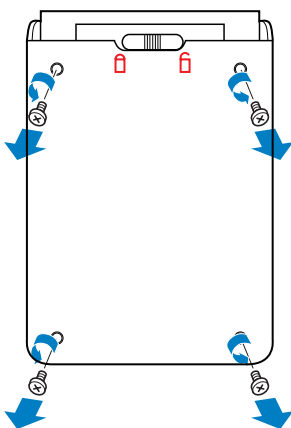


** If your 3.5" hard disk's height is lower than the NAS drive bay's height, follow the steps below.*

1. Slide the front panel lock at the bottom of your NAS to  (unlocked position) and unlock the front panel from the NAS case.

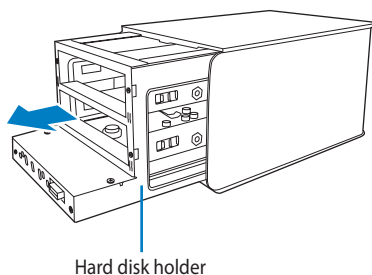


2. Remove the four screws at the bottom of your NAS.

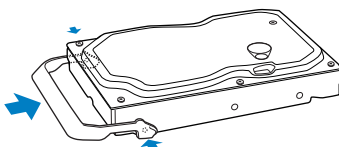




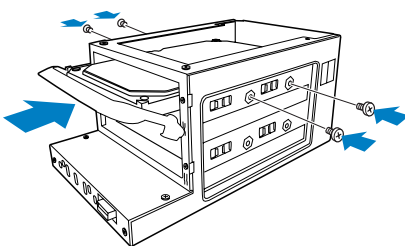
3. Take out the hard disk holder.



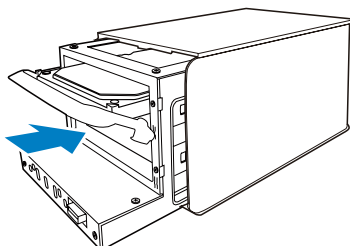
4. Install the bundled hard disk handle on your hard disk.



5. Using the hard disk handle, push the hard disk into a drive bay until it is firmly positioned. Secure the hard disk to the hard disk holder with the four bundled screws.

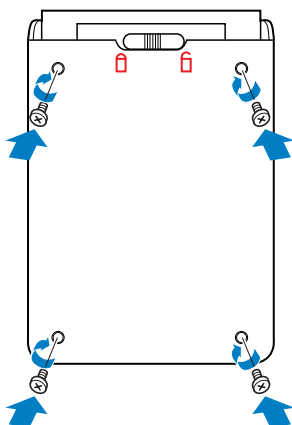



6. Replace the hard disk holder.

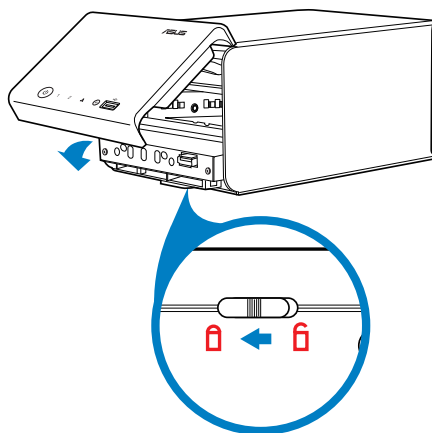




7. Secure the hard disk holder to the NAS case with the four screws you removed in Step 2.



8. Close the front panel and slide the front panel lock to  (locked position).

**IMPORTANT:**

Ensure to slide the front panel lock back to  (locked position), otherwise the NAS cannot be powered ON.





2.1.2 Connecting your NAS to a power source

To connect your NAS to a power source:

1. Connect the power cord to the power adapter.
2. Connect the power adapter to the DC IN port at the back of your NAS.
3. Plug the power cord into a power outlet.



WARNING:

- Use only the bundled power adapter. Using other power adapters may damage your device.
- Ensure that you plug the power adapter to a power source with the correct power rating (100 ~ 240VAC).

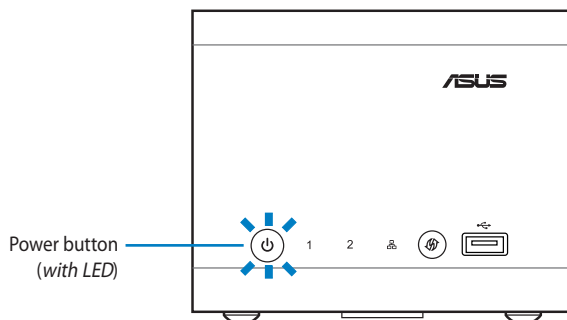
2.1.3 Turning your NAS ON/OFF

To turn your NAS ON:

Press and hold the power button at the front of your NAS until the power LED starts blinking blue.

To turn your NAS OFF:

- Press and hold the power button at the front of your NAS for more than five seconds until the power LED starts blinking blue.



- Use the Web GUI. See **3.2 Knowing the Home screen** and **3.3.20 Shutting down / restarting / putting NAS on Sleep mode** for details.





2.1.4 Connecting your NAS to a Local Area Network (LAN)

Connect your NAS to a LAN to share your folders and USB 2.0 printer with the LAN clients.

To connect your NAS to a network:

1. Connect one end of the supplied RJ-45 cable to the Gigabit LAN port at the back of your NAS.
2. Connect the other end of the RJ-45 cable to a wall LAN jack, or a LAN port on a router or switch.



NOTE:

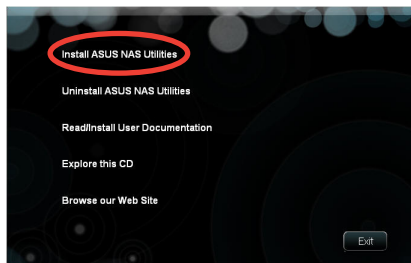
You may connect your NAS directly to a computer and use it as an external HDD for expanding your computer's storage capacity. See **Chapter 8: FAQ (Frequently Asked Questions)** for details.

2.2 Installing the software

Install the utilities from the bundled Support CD. These utilities help you manage your NAS and back up your data.

To install the utilities from the Support CD:

1. Place the Support CD into your computer's optical drive.
2. From the autorun screen, click **Install ASUS NAS Utilities**.



NOTE:

If Autorun is not enabled on your computer, double-click **setup.exe** from the root directory of the Support CD to launch the above screen.

3. Follow the onscreen instructions to complete the installation.



2.3 Running Setup Wizard

After completing the software installation, run **Setup Wizard** to configure the following basic settings that you need to configure before you can start using your NAS.

- **Administrator password** (for the administrator to access the Web GUI)
- **NAS name** (for the administrator to access the Web GUI and for clients to access the shared folders)
- **NAS IP address** (for the administrator to access the Web GUI and for clients to access the shared folders)
- **HDD file system and volume types** (concerning data protection level and data access speed)
- **Network drive mapping** (for the administrator to access the NAS internal hard disks from the Windows® My Computer screen)



NOTE:

You may also run Setup Wizard via the Web GUI. See **3.3.1 Running Setup Wizard** for details.

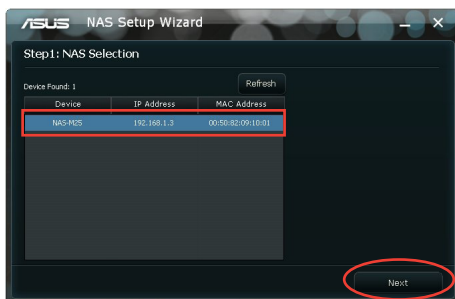


IMPORTANT:

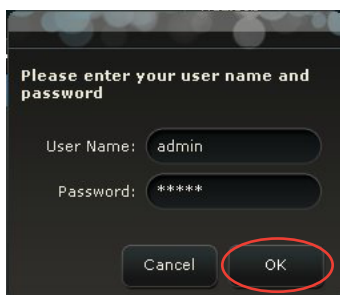
Before running Setup Wizard for the first time, back up your data on the hard disks. Setup Wizard erases all data on your hard disks and formats them.

To run **Setup Wizard**:

1. Launch **Setup Wizard**.
2. Wait while Setup Wizard is detecting NAS devices on the network.
3. From the list of devices found, select **NAS-M25** (default NAS name), then click **Next**.



4. Key in the username **admin** (*not user-configurable*) and the default password **admin**, then click **OK**.



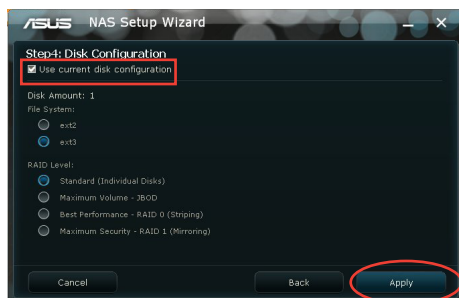
5. If you want to keep the default password (**admin**), click **Next**. Otherwise, untick **Use current password** and create a new password, then click **Next**.



6. If you want to keep the default NAS name, time zone, and IP settings, click **Next**. Otherwise, make your preferred changes, then click **Next**.



7. If you want to keep the default file system and volume types, click **Apply**. Otherwise, untick **Use current disk configuration** and customize these settings, then click **Apply**.



IMPORTANT:

Before changing the file system and volume types, back up your data on the hard disks.



NOTES:

File system type

We recommend that you use the **ext2** file system.

Volume types

Standard (Single Disk): You can only install one hard disk. If it is damaged, all data is lost.

Maximum Volume - JBOD: JBOD requires two hard disks and is ideal for storing a large amount of data. The total capacity of a JBOD volume is the sum of two disks.

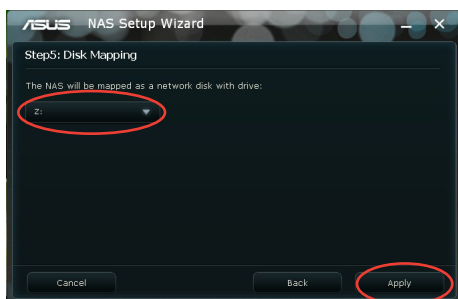
Best Performance - RAID 0 (Striping): RAID 0 requires two hard disks and is ideal for fast data access. It offers a data stripping process that divides data into blocks and spreads the data blocks across two disks.

Maximum Security - RAID 1 (Mirroring): RAID 1 requires two hard disks and is ideal for backing up important data. The content of one disk is duplicated to the other disk to ensure data security, but the actual available storage capacity equals to the capacity of one disk.

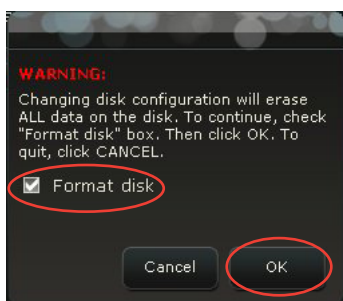
Comparison of volume types

Volume type	Number of hard disks	Data protection	Data access speed
Standard	1	None	Good
JBOD	2	None	Good
RAID 0	2	None	Great
RAID 1	2	Strong	Good

8. Assign a drive letter for your NAS, then click **Apply**.



9. Ensure that you back up the data on your hard disks. Check **Format disk**, then click **OK**.



10. Wait while the new settings are being applied. When done, click **Go to Web UI** to access the Web GUI where you can configure the advanced settings for your NAS.





2.4 Knowing the NAS network folder

Upon completing Setup Wizard, launch Windows® My Computer and you can find the NAS network folder with the drive letter you set in Setup Wizard. Upload the resources that you want to share with others to this NAS network folder.

2.4.1 Knowing the default folders

Setup Wizard automatically create these default folders:

Folder name	Descriptions
Recycle	Keeps the deleted files.
Downloads	Default folder for BT Client Add-in module.
TwonkyUpload	Default folder for Twonky UPnP server web upload function.

2.4.2 Having full control over the NAS network folder

By default, the NAS network folder is set as a shared folder open to all users. Change the shared permission if you want sole and full control over the NAS network folder, and create your own account for full access to the NAS network folder. See **3.3.13 Creating a shared folder**.

Chapter 3

Managing your NAS via its Web GUI

3.1 Logging in the Web GUI

The Web Graphics User Interface (Web GUI) is a web management system that allows you to manage your NAS using a web browser.

To log in the Web GUI of your NAS:

1. Launch a web browser, key in **http://[NAS name]** or **http://[NAS IP]**, and press **<Enter>**. The login page of the Web GUI appears.



NOTES:

- The default NAS name is **NAS-M25**. You can customize the NAS name using **Setup Wizard** and find the NAS IP using **NAS Discovery**.
- You may also launch the login page using **NAS Discovery**. See **1.5.3 NAS Discovery** for details.
- By default, Mac and Linux do not support the WINS protocol. If you are using a computer running on Mac or Linux, you can only use **http://[NAS IP]** to enter the NAS web GUI.

2. From the home screen, click an icon.



NOTES:

- The icons may vary depending on the add-in applications that you install.
- For more details about the icons, refer to **3.2 Knowing the Home screen**.

3. Key in the username **admin** and password.








NOTES:

- The username is not user-configurable.
- The default password is **admin**. You can customize the password using the Web GUI. See **3.3.15 Setting the administrator password** for details.

3.2 Knowing the Home screen

The Home screen provides access to the following web-based management tools:

Icon	Description
	Configuration Center Allows you to run Setup Wizard and configure the advanced settings such as the hard disk, server, network, and account settings for your NAS. See 3.3 Using Configuration Center for details.
	File Manager (Add-in module) Allows you to browse your files and folders on the disks through a web user interface with an easy-to-manage file system.
	File Download (Add-in module) Allows you to download files from an HTTP or FTP site.
	BT Client (Add-in module) Allows you to download and upload files via BitTorrent. You can also use an Android device to manage the torrent files. See 7.1 Managing torrent files via your Android device for details.
	Twonky UPnP Server Allows you to set up the Twonky UPnP Server and browse your media files such as photos, music, or video files online.

3.3 Using Configuration Center

Use **Configuration Center** to run Setup Wizard and configure the advanced settings for your NAS.

3.3.1 Running Setup Wizard

Use **Setup Wizard** included in the Web GUI to configure the basic settings for your NAS.

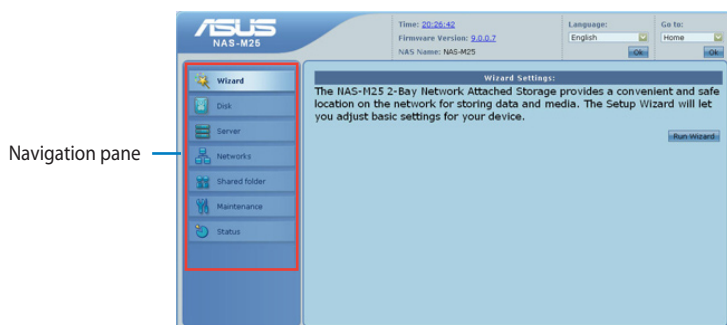


NOTE:

You may install the NAS utilities from the Support CD and run Setup Wizard. See **2.3 Running Setup Wizard** for details.

To run Setup Wizard via the Web GUI:

1. From the navigation pane, select **Wizard**, then click **Run Wizard**.



2. Follow the onscreen instructions to complete the wizard.

3.3.2 Configuring your hard disks

To configure your hard disks:

1. From the navigation pane, click **Disk > Disk Configuration**.
2. Do either of the following:
 - In the **Hard Drive Settings** area, select the file system and volume types, then click **Create**.



IMPORTANT:

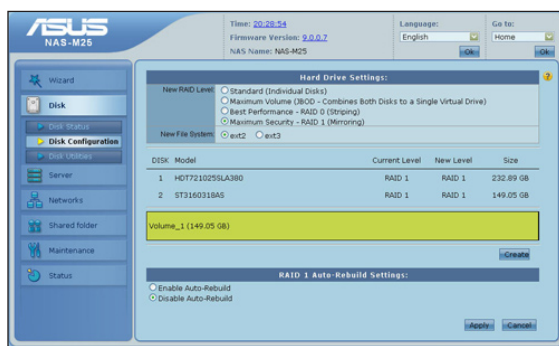
Changing the file system and volume types erases all data on your hard disks. Back up the data that you need before changing the file system and volume types.

- In the **RAID 1 Auto-Rebuild Settings** area, enable or disable the RAID 1 Auto-Rebuild function, then click **Apply**.



NOTE:

With RAID 1 Auto-Rebuild enabled, the system is able to recover a degraded RAID 1 volume with a newly inserted hard disk automatically. See **5.2 Using the RAID 1 technology** for details.



3.3.3 Monitoring your hard disks with S.M.A.R.T

S.M.A.R.T (Self-Monitoring, Analysis, and Reporting Technology) monitors your hard disks in real time and reports on various indicators of hard disk health. It is used to predict possible hard disk failures and prevent you from losing your data unexpectedly.

To create a S.M.A.R.T test:

1. From the navigation pane, click **Disk > Disk Utilities**.



2. In the **S.M.A.R.T Test** area, select the hard disk that you want to monitor.
3. Select a quick test or an extended test.
4. Check **Send result by E-mail** to deliver the test report to a recipient by e-mail.



NOTES:

- See **3.3.18 Enabling the e-mail alert service** for details about enabling the e-mail alert service.
- If you do not enable the e-mail alert service, go to **Status > HD Status** or **Status > Log** to view the S.M.A.R.T test report.

5. Click **Create Schedule** to specify the time when the test runs automatically and the frequency of the test. Click **Create** when done.



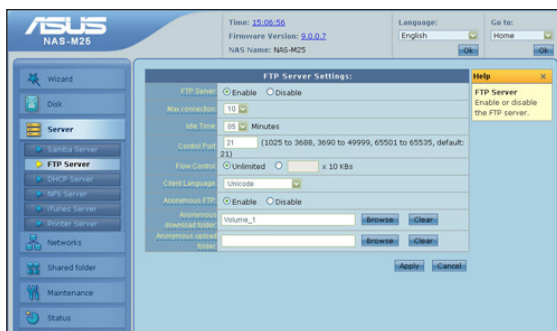
6. Click **Start** to run a test immediately.

3.3.4 Enabling the FTP server

The FTP server allows Windows®, Mac, and Linux users to access your shared folders through the LAN or the Internet via the FTP protocol.

To enable the FTP server:

1. From the navigation pane, click **Server > FTP Server**.



2. Configure the following settings:

FTP Server: Select **Enable**.

Max Connection: Set the maximum number of concurrent FTP connections.



NOTE:

When a user is uploading and downloading files from the FTP server simultaneously, it is identified as two connections.

Idle Time: Set the amount of idle time allowed for a user before he is logged out automatically.

Control Port: Set the port that the FTP server uses.



IMPORTANT:

This field is for advanced users who have experience configuring the FTP port. We recommend that you keep the default port number 21.



Flow Control: Set a upper limit for the download/upload speed to conserve local bandwidth.

Client Language: Select the client language.

Anonymous FTP: When this item is enabled, you can log into the FTP server using an anonymous account.

Anonymous download folder: Allows you to select the folder in your NAS-M25 to store your downloaded files using an anonymous account.

Anonymous upload folder: Allows you to select the folder in your NAS-M25 to store your uploaded files using an anonymous account.

3. Click **Apply**.

3.3.5 Enabling the DHCP server

Set your NAS as a DHCP server that assigns dynamic IP addresses to the clients on the LAN.



IMPORTANT:

DO NOT enable the DHCP server if there is already a DHCP server on your LAN. Doing so will cause network access error.

To enable the DHCP server:

1. From the navigation pane, click **Server > DHCP Server**.
2. Configure the following settings:
 - DHCP Server:** Select **Enable**.
 - Starting IP Address / Ending IP Address:** Set the range of the IP address.
 - Lease Time:** Set the length of time that a DHCP client can use the assigned IP address.
3. Click **Apply**.



3.3.6 Enabling the NFS server

The NFS server allows Linux users on the LAN to access your shared folders via the NFS (Network File System) protocol. A Linux user can mount the shared folders on your NAS in the way he mounts his local folders.

To enable the NFS server:

1. From the navigation pane, click **Server** > **NFS Server**.

2. Configure the following settings:

NFS Server: Select **Enable**.

Allowed Host: Key in the IP address of an NFS client.

Folder: Select the folder that you want to share with the NFS client.

Root Squash: Select **Root Squash** or **No Root Squash**.



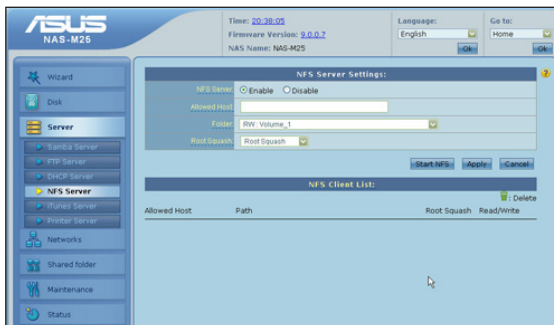
NOTE:

Selecting **No Root Squash** allows a remote root user to have full privileges on the NFS server.

3. Click **Start NFS**.

4. Repeat steps 2 ~ 3 to add more NFS clients.

5. Click **Apply** to save the new settings.



3.3.7 Enabling the iTunes server

The iTunes server allows iTunes clients on the LAN to play music files from your NAS.

To enable the iTunes server:

1. From the navigation pane, click **Server** > **iTunes Server**.
2. Configure the following settings:

iTunes Server: Select **Enable**.

Folder: Tick **All folders** to allow the iTunes clients to access all folders on your NAS. Otherwise, untick **All folders** and click **Browse** to specify a shared folder that contains your music files.

Password: Create a password for the iTunes clients.



NOTE:

This password is required when an iTunes client attempts to access your NAS.

3. Click **Apply**.



3.3.8 Enabling the Printer server

The Printer server allows you to share a USB 2.0 printer connected to a back USB 2.0 port on your NAS with Windows® users on the LAN.

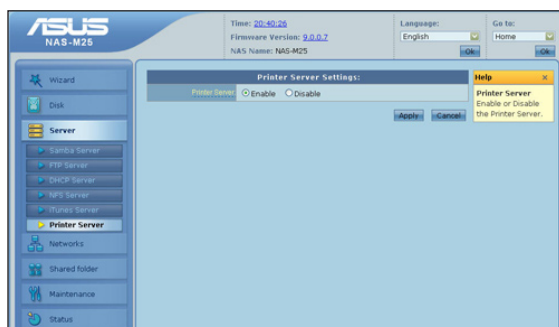


NOTE:

For more details, refer to section **4.6 Sharing a USB 2.0 printer via the Printer server.**

To enable the Printer server:

1. From the navigation pane, click **Server** > **Printer Server**.
2. Select **Enable**.
3. Click **Apply**.



3.3.9 Configuring the IP / DNS / JumboFrame settings

To configure the IP, DNS, and JumboFrame settings:

From the navigation pane, click **Networks** > **LAN**, then do either of the following:

- In the **LAN Port Network Settings** area, select **Manual DNS** as the DNS setting and key in the IP addresses of the DNS servers for your NAS. Click **Apply** when done.



NOTE:

If you choose to obtain a dynamic IP address from the DHCP server on your LAN, use NAS Discovery included in the Support CD to find the NAS IP address that allows you to access the NAS Web GUI and shared folders. See **1.5.3 NAS Discovery** for details.

- In the **JumboFrame (MTU) Settings** area, enable JumboFrame to increase the network throughput and the data transfer speed.

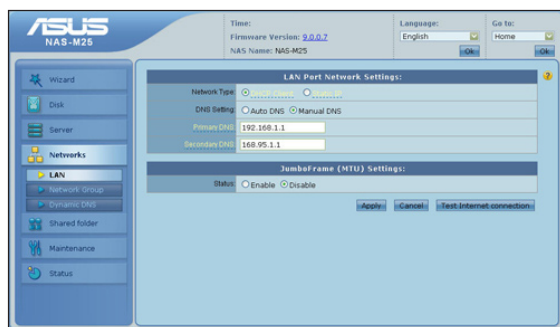
To do this:

1. Select **Enable**.
2. From the **MTU** dropdown menu, select the frame size.
3. Click **Apply**.



IMPORTANT:

Ensure that your computer network adapter, router, and NAS have the same Jumbo Frame settings, otherwise different settings will decrease the networking performance.



3.3.10 Joining a Windows® workgroup or domain

Add your NAS to a Windows® workgroup and enable users in the same workgroup to access shared folders on the NAS. Workgroups are usually used in small or home office networks that typically contain not more than twenty computers. All computers in a workgroup must be on the same local area network or subnet.

Add your NAS to a Windows® Active Directory domain and allow the domain users to access shared folders on the NAS. Domains are usually used in large corporate networks that contain one or more computers serving as servers. The computers in a domain can be on different local area networks.

To join a Windows® workgroup or domain:

1. From the navigation pane, click **Networks** > **Network Group**.
2. Select **Workgroup** or **Active Directory**.
3. Configure the settings for the selected group type.
4. Click **Apply**.

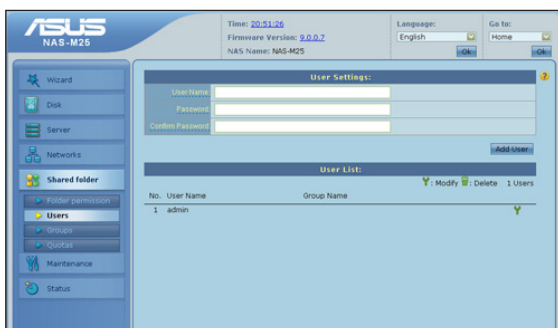


3.3.11 Creating a user account

Create a user account that can access your shared folders.

To create a user account:

1. From the navigation pane, click **Shared Folder > Users**.
2. In the **User Name** field, key in the name for the new account.
3. In the **Password** field, key in the password for the new account.
4. In the **Confirm Password** field, key in the password again for confirmation.
5. Click **Add User**. You can find the new account in the User List area.






3.3.12 Creating a user group

Create a user group if you want to assign a shared folder to multiple users.

To create a user group:

1. From the navigation pane, click **Shared folder > Groups**.
2. In the **Group Name** field, key in the name for the new group.
3. Click **Add Group**. You can find the new group in the Group List area.
4. Click  for the new group to add or remove users from the group.



3.3.13 Creating a shared folder

To create a shared folder:

1. From the navigation pane, click **Shared folder** > **Folder Permission**.



NOTES:

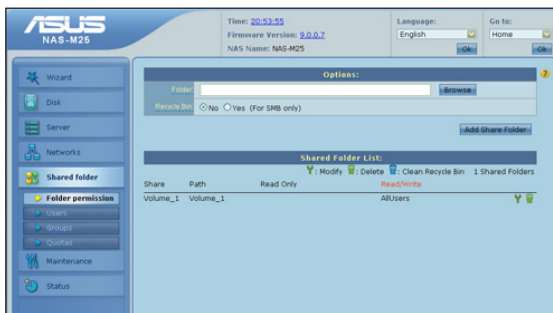
- Tick **Allow everybody read only (For SMB, FTP, and NFS)** to assign all LAN clients read permissions to the shared folder when they access it via the SMB or NFS protocol.
- Tick **Allow everybody read and write (For SMB, FTP, and NFS)** to assign all LAN clients read/write permissions to the shared folder when they access it via the SMB or NFS protocol.

2. Configure the following settings:

Folder: Click **Browse** to assign a shared folder on either the internal or external disk for the selected users or groups.

Recycle Bin: Select **Yes** to create a **Recycle** folder in the new shared folder. This **Recycle** folder keeps the files deleted from this shared folder via the SMB protocol.

3. Click **Add Share Folder**. You can find the new shared folder in the Shared Folder List area.



NOTES:

- The account, group, and shared folder settings are applied to the Samba, FTP, NFS, and Web file manager at the same time.
- If you want sole and full control over the NAS network folder, delete the shared folder and disable the NAS sharing function. See **3.3.24 Changing the NAS sharing permission** for details.




3.3.14 Assigning hard disk quotas

A quota is the maximum amount of disk space a user or shared folder is allowed to use.

To assign hard disk quotas:

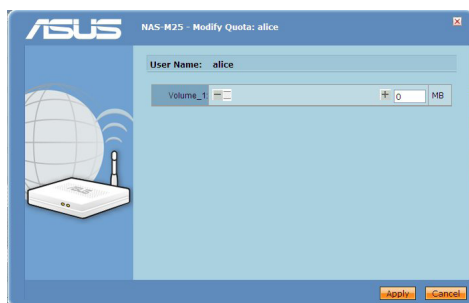
1. From the navigation pane, click **Account > Quotas**.
2. Do either of the following:
 - Set the maximum amount of disk space that a user is allowed to use.


To do this:

- a. In the **Quota Settings** area, select **Enable**, then click **Apply**.
- b. In the **User Quota Settings** area, click the spanner icon  for the user you want to assign a quota.



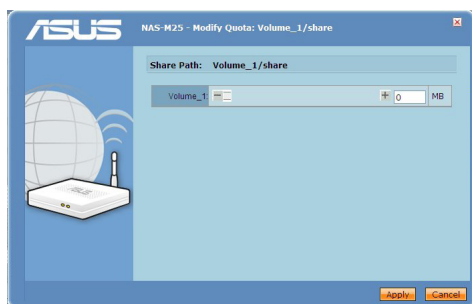
- c. Key in the quota for the user, then click **Apply**.



- Set the maximum amount of disk space that a shared folder is allowed to use.
 - a. In the **Quota Settings** area, select **Enable**, then click **Apply**.
 - b. In the **Shared Folder Quota Settings** area, click the spanner icon  for the shared folder you want to assign a quota.



- c. Key in the quota for the shared folder, then click **Apply**.

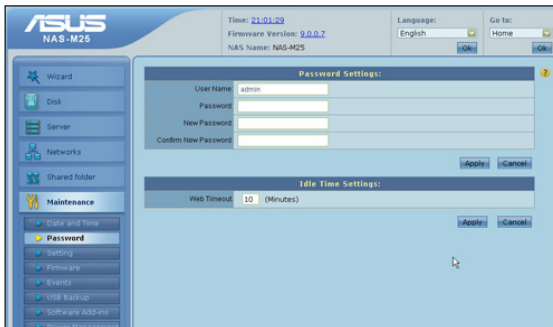


3.3.15 Setting the administrator password

The password enables you to log in the NAS Web GUI.

To set the administrator password:

1. From the navigation pane, click **Maintenance** > **Password**.
2. In the **Password Settings** area, create a new administrator password. Click **Apply** when done.



3.3.16 Saving / loading / restoring system settings

From the navigation pane, click **Maintenance** > **Setting**, then do any of the following:

- Click **Save** to back up the current system settings.
- Click **Load** to load another set of system settings.
- Click **Restore** to restore the system to its factory default settings. You may also use the reset button at the back of your NAS to perform system restoration.



NOTE:

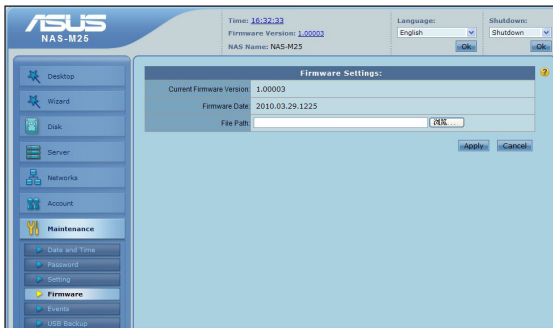
System settings include account, shared folder, password settings, and other settings.

3.3.17 Upgrading the firmware

Upgrade the firmware to enhance the functionality of your NAS.

To upgrade the firmware for your NAS:

1. From the navigation pane, click **Maintenance** > **Firmware**.
2. Click **Browse** to specify a firmware file.
3. Click **Apply**.



IMPORTANT:

If the firmware upgrading process fails, use **Firmware Restoration** included in the Support CD to rescue your NAS and restore it to its normal working condition.

To rescue your NAS via Firmware Restoration:

1. Turn your NAS OFF.
2. Simultaneously press and hold the reset button at the back and the power button at the front of your NAS.
3. Release the power button when the power LED starts blinking blue and release the reset button.



NOTE:

Your NAS is currently in Rescue mode.

4. Launch the Firmware Restoration utility.
5. Click **Browse** to locate the firmware file.
6. Click **Upload**.

3.3.18 Enabling the e-mail alert service

Enable the e-mail alert service and get various event reminders, notifications, and warnings via e-mail.

To enable the e-mail alert service:

1. From the navigation pane, click **Maintenance** > **Events**.
2. In the **E-Mail Settings** area, configure the following settings:

E-mail Alert: Select **Enable**.

Login Method: Select **Login** if your mail server requires authentication. Select **Anonymous** if it does not.

SMTP Server / Port Number: Key in the address and port number of your mail server.



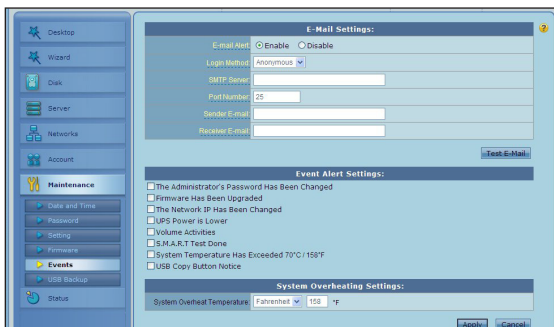
NOTE:

Contact your mail service provider for the above information.

Sender E-mail: Key in your e-mail address.

Receiver E-mail: Key in the recipient's e-mail address.

3. Click **Test E-Mail** to verify if you have enabled the e-mail alert service successfully.
4. In the **Event Alert Settings** area, select the events.
5. Click **Apply**.



3.3.19 Copying your USB data to NAS

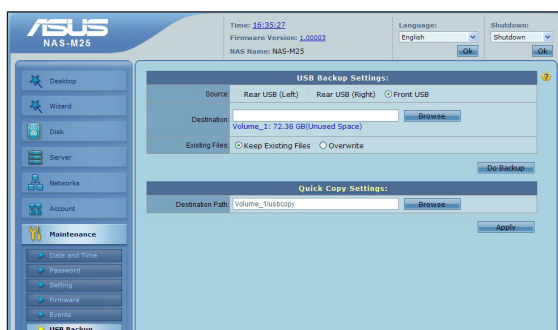
To copy your USB data to NAS:

1. Connect your USB storage device to a USB 2.0 port either at the front or back of the NAS.
2. From the navigation pane, click **Maintenance** > **USB Backup**.
3. In the **USB Backup Settings** area (*only appears when you have plugged a USB 2.0 device to the NAS*), configure the following settings:

Destination: Click **Browse** to specify a destination folder.

Existing Files: If a file with the same name already exists in the destination folder, tick **Keep Existing Files** to keep the file in the destination folder or check **Overwrite** to replace it with the one from the USB device.

4. Click **Do Backup** to start copying data from the USB device to the specified destination folder. It indicates that the copying process has completed when a **Backup OK** message appears next to the **Do Backup** button.



3.3.20 Shutting down / restarting / putting NAS on Sleep mode

From the **Maintenance > Power Management** page, you can shut down, restart, or put your NAS on sleep mode.

To shut down, restart, or put your NAS on sleep mode:

1. From the navigation pane, select **Maintenance > Power Management**.
2. Click **Sleep**, **Restart**, or **Shutdown**.



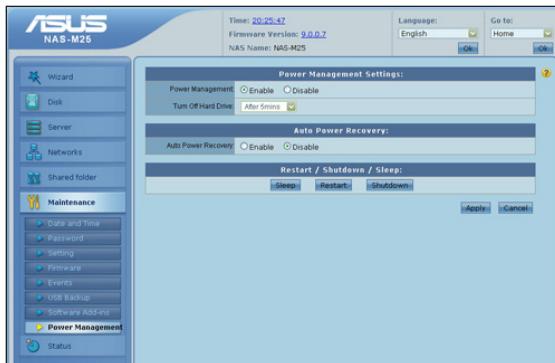
NOTES:

- In Sleep mode, the HDD LEDs light solid green.
- The NAS wakes up immediately when you access files or folders on the internal/external disks and the HDD LEDs blink blue.

3.3.21 Turning off your hard disk drives

To turn off your hard disk drives:

1. From the navigation pane, select **Maintenance > Power Management**.
2. In the **Power Management** field, ensure that **Enable** is ticked.
3. In the **Turn Off Hard Drive** dropdown list, select the time of inactivity (in minutes) before the hard drives are turned off and your NAS enters the sleep mode.



NOTES:

- In Sleep mode, the HDD LEDs light solid green.
- The NAS wakes up immediately when you access files or folders on the internal/external disks and the HDD LEDs blink blue.
- If you enable the BT Client function, the HDD will not turn off automatically.
- If the rescan time in Twonky UPnP server is set to less than five minutes, the HDD will not turn off. To set the rescan time in Twonky UPnP server, click **Twonky UPnP server > TwonkyMedia Setting > Sharing > Rescan in minutes**.

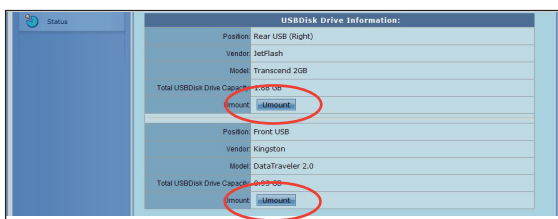


3.3.22 Unmounting a USB 2.0 device

Unmount your USB 2.0 device before removing it from your NAS, otherwise you might lose your data on the USB 2.0 device.

To unmount a USB 2.0 device:

1. From the navigation pane, click **Disk > Disk Status**.
2. In the **USB Disk Drive Information** area (*only appears when you have plugged a USB 2.0 device to the NAS*), select a USB 2.0 device and click **Unmount**.

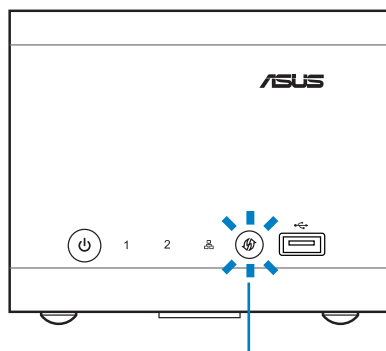


NOTE:

You may also unmount the front USB 2.0 device using the USB button.

To do this:

Press and hold the USB button for more than three seconds until the USB LED turns OFF.



USB button
(with LED, for the front USB 2.0 port only)



3.3.23 Checking the system / hard disk / printer status

To check the status of your system, hard disks, and printer:

1. From the navigation menu, click **Status**.
2. Do any of the following:
 - Click **System Status** to obtain information on the network settings, and the system and hard disk temperatures.



- Click **HD Status** to view the hard disk health status and the S.M.A.R.T report.



NOTE:

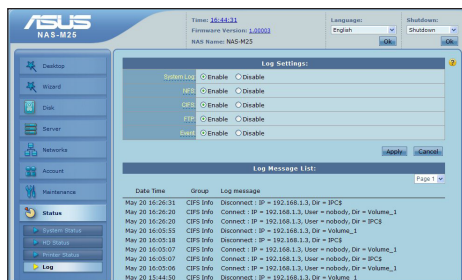
Go to **Disk > Disk Status** to check the hard disk's usage information.



- Click **Printer Status** to obtain information on the connection status and print queue.



- Click **Log** to view system, NFS, CIFS / SMB, FTP, and event logs.



3.3.24 Changing the NAS sharing permission

By default, the NAS network folder is set as a shared folder open to all users. Change the shared folder permission if you want sole and full control over the NAS network folder, and create your own account for full access to the NAS network folder.

To disable the NAS sharing function:

1. Log in the Web GUI and go to **Configuration Center > Shared folder**.
2. In the **Users** page, create your account name and password. See **3.3.11 Creating a user account** for details.
3. In the **Folder permission** page, delete the shared network folder and assign the network folder to your account.
4. Launch NAS Discovery.
5. Click **Map to Disk** and follow the onscreen instructions to complete the network drive mapping process.





Chapter 4

Sharing folders and a printer

4.1 Sharing folders via the FTP server

Turn your NAS into an FTP server and allow Windows®, Mac, and Linux users to access your shared folders through the LAN or the Internet.

Actions for the administrator

1. Set up the Virtual Server for your router.



IMPORTANT:

This is required if you want to make your shared folders accessible over the Internet. Refer to the documentation that came with your router for instructions.

2. Create user accounts, and assign shared folders and access rights. See **3.3.11 ~ 3.3.13** for details.
3. Enable the FTP server via the Web GUI. See **3.3.4 Enabling the FTP server** for details.

Actions for an FTP client

1. Launch an FTP client application.
2. In the FTP client application, key in the FTP server address **ftp://[NAS name]** or **ftp://[NAS IP]**, username, and password.
3. Download and upload files to the assigned shared folders.





4.2 Sharing folders via the NFS server

Turn your NAS into an NFS server and allow Linux users on the LAN to mount your shared folders.

Actions for the administrator

1. Create user accounts, and assign shared folders and access rights. See **3.3.11 ~ 3.3.13** for details.
2. Enable the NFS server via the Web GUI. See **3.3.6 Enabling the NFS server** for details.

Actions for a Linux client

1. Run the following command to mount the assigned shared folder.

mount -t nfs [NAS IP address]:/[shared folder name] [directory to mount]



NOTES:

For example, if your NAS IP is **192.168.1.2** and you assign **Linux** as the shared folder name under the **/mnt/share** directory, then the Linux client can use the following command to mount the **Linux** folder.

mount -t nfs 192.168.1.2:/Linux /mnt/share

2. Log in NAS using your username and password.
3. Access files from the shared folder.

4.3 Sharing folders via the Samba server

The Samba server, always enabled on your NAS, allows users on the LAN to access your shared folders via the SMB protocol.

Actions for the administrator

Create user accounts, and assign shared folders and access rights. See **3.3.11 ~ 3.3.13** for details.



Actions for a Samba client


1. Launch a web browser and key in \\[NAS name] or \\[NAS IP].
2. Log in NAS with the username and password.
3. Download and upload files to the assigned shared folders.

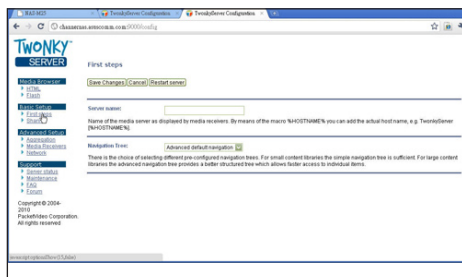
4.4 Sharing multimedia files via the Twonky UPnP server

Twonky server is a built-in UPnP / DLNA media server that enables you to download and share your music, pictures, and videos with UPnP-enabled client devices (also known as media players, digital media players / DMP, or media adapters).

Actions for the administrator

When you log into the Twonky UPnP server for the first time, follow these steps:

1. Click the configuration icon .
2. Log in using the administrator account.
3. Under **Basic Setup**, click **First Steps** to set up the UPnP server.



Actions for a UPnP client

- UPnP/DLNA-enabled devices, such as XBOX 360, PS3, or Internet TV, that are connected to the local area network will be able to find your NAS automatically. See the user manual of the UPnP/DLNA-enabled device.
- For your computer, you can use Windows® media player 11 or later to connect to the UPnP server or download the XBMC UPnP client utility to connect to the Twonky UPnP server. Download the XBMC media player from <http://xbmc.org>
- For mobile devices such as iPhone or Android, you can use the keywords "UPnP" or "DLNA" to find the UPnP/DLNA applications from App Store or Android Market.



4.5 Sharing music via the iTunes server

Turn your NAS into an iTunes server and allow iTunes clients on the LAN to browse and play music files from your NAS.

Actions for the administrator

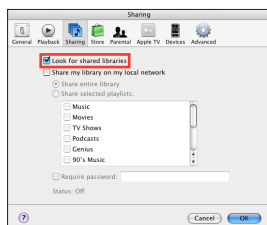
Enable the iTunes server via the Web GUI. See **3.3.7 Enabling the iTunes server** for details.

Actions for an iTunes client

1. Ensure that the iTunes application is able to detect shared music on the LAN.

iTunes for Mac OS X

From the iTunes menu bar, click **iTunes > Preferences > Sharing**, then tick **Look for shared libraries**.



iTunes for Windows® OS

From the iTunes menu bar, click **Edit > Preferences > Sharing**, then tick **Look for shared libraries**.



NOTE:

The above screens are for reference only. The actual screens depend on the iTunes version you installed on your computer.

2. Log in the NAS with the password that the administrator has provided.
3. Browse and play music files on the NAS.

4.6 Sharing a USB 2.0 printer via Printer server

Connect a USB 2.0 printer to a USB 2.0 port at the back of your NAS and share it with Windows® users on the LAN via Printer server.

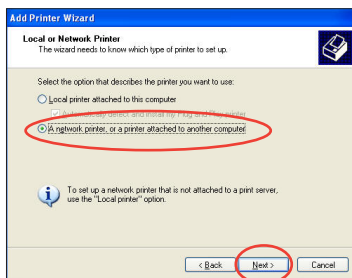


NOTES:

- You can only share one USB 2.0 printer at a time.
- Only the back USB 2.0 ports support the printer sharing function.
- Obtain information on the connection status and print queue via the Web GUI. See **3.3.23 Checking the system / hard disk / printer status** for details.

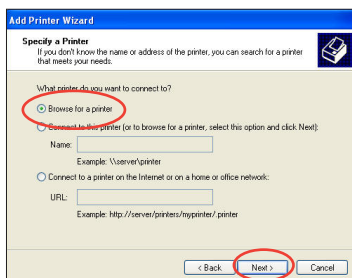
To set up a shared USB 2.0 printer via Windows® XP Add Printer Wizard:

1. Connect your USB 2.0 printer to a USB 2.0 port at the back of your NAS.
2. Enable the Printer server via the Web GUI. See **3.3.8 Enabling the Printer server** for details.
3. From the Windows® desktop, click **Start > Printer and Faxes > Add a printer** to run **Add Printer Wizard**.
4. Select **A network printer, or a printer attached to another computer**, then click **Next**.

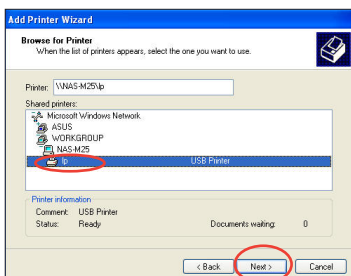




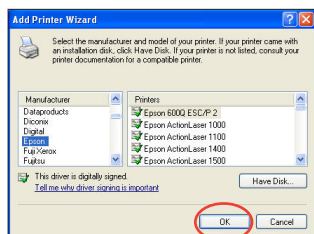
5. Select **Browse for a printer**, then click **Next**.



6. From the list of printers, select your printer and click **Next**.



7. Select the manufacturer and model of your printer, then click **OK**.



8. Follow the onscreen instructions to complete the setup.





Chapter 5

Backing up your data

5.1 Using TotalRecovery™ Pro

FarStone® TotalRecovery™ Pro offers comprehensive backup solutions including hard drive imaging, system snapshots, incremental backup, and Universal Restore. Refer to the TotalRecovery™ Pro user manual included in the Support CD for details.

5.2 Using the RAID 1 technology

RAID 1 is an ideal solution for backing up important data. The content of one disk is duplicated to the other disk to ensure data security. If one disk crashes, you will not lose your data on the disk. Just replace it with a new disk and the RAID 1 Auto-Rebuild function automatically recovers the degraded volume.

To create a RAID 1 volume:

1. Install two SATA hard disks.
2. Set the volume type to RAID 1 in the Web GUI.
3. Enable the RAID 1 Auto-Rebuild function. See **3.3.2 Configuring your hard disks** for details.

5.3 Backing up your USB data to NAS

5.3.1 Copying front/back USB data via the Web GUI

Plug your USB storage device to a USB 2.0 port on the NAS and copy data on it to the NAS by using the Web GUI. See **3.3.19 Copying your USB data to NAS** for details.





5.3.2 Copying front USB data via One Touch Copy

With One Touch Copy, backing up your front USB data to NAS is only one click away.



NOTE:

Only the front USB 2.0 port supports the One Touch Copy function.

Using One Touch Copy

To use One Touch Copy:

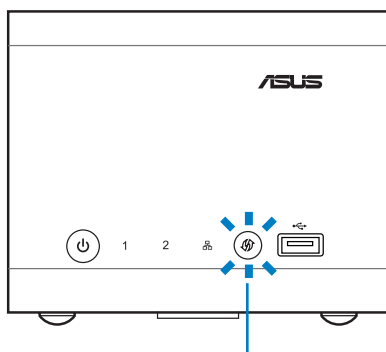
1. Connect a USB storage device to the front USB 2.0 port. The USB LED lights solid blue.
2. Press the USB button. The USB LED blinks blue, which indicates that data is being transferred from the USB storage device to the NAS.



NOTES:

- When you are using One Touch Copy for the first time, pressing the USB button automatically creates a **usbcopy** folder in the root directory of the NAS network folder. It is used as the destination folder for One Touch Copy.
- If you want to manually assign a destination folder, see the next section **Manually assigning a destination folder for One Touch Copy**.

3. Wait while data is being copied to the NAS. It indicates that the copying process has completed when the USB LED lights solid blue.



USB button
(with LED, for the front USB 2.0 port only)





Manually assigning a destination folder for One Touch Copy

To manually assign a destination folder for One Touch Copy:

1. Log into the Web GUI.
2. Go to **Configuration Center > Maintenance > USB Backup**.
3. In the **Quick Copy Settings** area, specify the destination folder.

Chapter 6

Using the add-in applications

6.1 Installing the add-in applications



NOTE:

Obtain the add-in applications from the **Software Add-ins** folder in the support CD or from the ASUS website at <http://www.asus.com>

To install the add-in applications:

1. Log into the Web GUI.
2. Go to **Configuration Center > Maintenance > Software Add-Ins**.
3. In the **File Path** field under **Add-in Settings**, select the destination path for the applications that you want to install, then click **Apply**.
4. In the **Add-in List**, click the button to select and start installing the application.



6.2 Using File Download

File Download allows you to download files from an HTTP or an FTP site.

To use File Download:

1. From the home screen, click **File Download**.
2. Log into the NAS web GUI.
3. Click **Create**.
4. From the **Create Download Job** screen, select **FTP** or **HTTP** as the download type.
5. Select **Account** or **Anonymous** as the login method.



IMPORTANT:

Select **Account** when you have a user account with the FTP or HTTP address where you want to download files from.

6. Key in the other necessary information, and click **Next**.
7. Set up the download schedule, and click **Apply** when done.



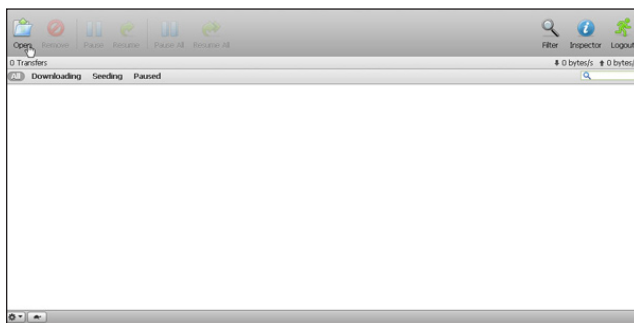
6.3 Using BT Client

BT Client allows you to download and upload files via BitTorrent. You can also use an Android device to manage the torrent files. See **7.1 Managing torrent files via your Android device** for details.

Uploading torrent files to your NAS

To upload torrent files to your NAS:

1. From the home screen, click **BT Upload**.
2. Log into the NAS web GUI.
3. From the menu bar, click **Open**.



4. Browse for the torrent files that you want to upload from your external storage device. You may also key in a URL address where you want to upload torrent files from.
5. Click **Upload** to upload the torrent file to your NAS.



6.4 Using File Manager

File Manager allows you to browse your files and folders on the internal and external disks through a web user interface with Windows® style operations.



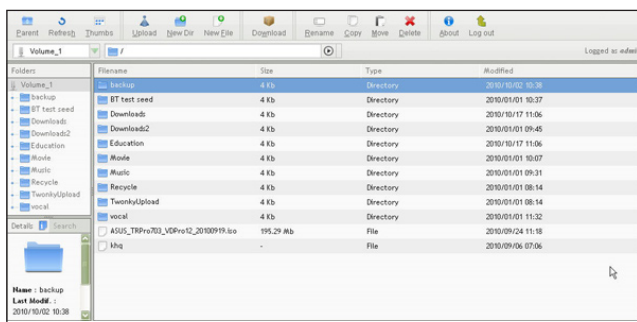
IMPORTANT:

Before using File Manager, ensure that you have a user account and access rights to the files and folders.

Browsing files and folders

To browse files and folders:

1. From the home screen, click **File Manager**.
2. Log into the NAS web GUI.
3. You can now start to browse the files and folders on the disks.





Chapter 7

Managing torrent files via your Android device

7.1 Managing torrent files via your Android device

You can manage the torrent files on your NAS-M25 using your Android device.



IMPORTANT:

- Ensure that **BT Client** add-in application is installed in your NAS.
 - Download the **ASUS NAS-M25 BT Manager** from the Android Market.
-

To manage torrent files via your Android device:

1. On your Android device, tap the search icon and key in **NAS-M25** to search and download the ASUS NAS-M25 BT Manager.
2. After installing the ASUS NAS-M25 BT Manager on your Android device, tap **Open settings**.
3. Configure the following settings:
 - IP or domain name:** Key in the NAS-M25 IP address or the NAS Domain Name.
 - Use authentication:** Tap to tick this item.
 - Username:** Key in your NAS-M25 default administrator username **admin**.
 - Password:** Key in your NAS-M25 administrator password.



NOTE:

The NAS Domain Name is the domain name of your NAS-M25 that you registered via **Networks > Dynamic DNS** in the NAS web GUI.

4. When you have successfully configured the ASUS NAS-M25 BT Manager settings, you can monitor and control your NAS-M25 BT Client on your Android device. See **6.2 Using BT Client** for details on downloading and uploading BitTorrent files.





Chapter 8

FAQ (Frequently Asked Questions)

8.1 FAQ (Frequently Asked Questions)


This chapter provides solutions to some common problems that you may encounter when using your NAS.



NOTE:

Visit <http://support.asus.com> to get more technical support for your ASUS product.

I cannot turn my NAS ON.

- If the LED on the power adapter lights up, check if the front panel lock at the bottom of your NAS is slid to  (locked position).
- If the LED on the power adapter does not light up, check if the power outlet is functioning properly.

Why does my NAS sometimes shut down automatically?

This NAS offers system overheating protection, allowing you to set an upper limit for the system temperature. Once the system temperature exceeds the specified limit, it shuts down automatically.

To set the system auto-shutdown temperature:

1. Log in the Web GUI and go to **Configuration Center > Maintenance > Events**.
2. In the **System Overheating Settings** area, select the system auto-shutdown temperature.

Why does the Web GUI sometimes log out automatically?

Check the inactivity timer setting in the Web GUI. If the Web GUI remains inactive longer than the specified amount of time, it will log out automatically.

To set the inactivity timer:

1. Log in the Web GUI and go to **Configuration Center > Maintenance > Password**.
2. In the **Idle Time Settings** area, set the inactivity timer.





I forgot my password for accessing the Web GUI.

Restore your NAS to its original factory default settings.

How to restore my NAS to its original factory default settings?

- Press and hold the reset button for more than five seconds until the power LED starts blinking blue.
- Use the Web GUI. See **3.3.19 Saving / loading / restoring system settings** for details.

Below are the factory default settings on your NAS:

Username: admin

Password: admin

NAS name: NAS-M25

Web GUI address: http://nas-m25



IMPORTANT:

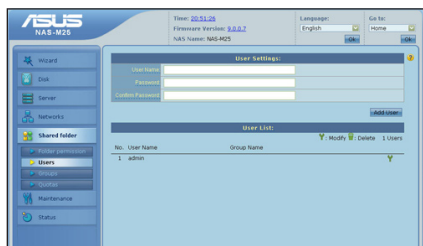
System restoration clears the server and account settings on your NAS. You have to reconfigure these settings before you can share folders with others.

After system restoration, I cannot open the NAS network folder from the Windows® My Computer screen.

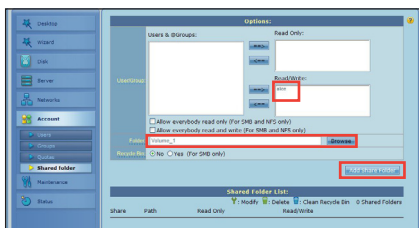
It is because that system restoration clears the account and shared folder settings on your NAS.

To solve this problem:

1. Log in the Web GUI and go to **Configuration Center > Shared folder**.
2. In the **Users** page, create your account name and password.



3. In the **Shared folder** page, assign the network folder to your account.



4. Launch NAS Discovery.
5. Click **Map to Disk** and follow the onscreen instructions to complete the network drive mapping process.



What can I do to improve the BitTorrent download speed?

The DNS (Domain Name Server) performance may influence the BitTorrent download speed. If you find the download speed lower than usual, try changing the DNS server or use the Google® DNS **8.8.8.8**.

I cannot access the NAS Web GUI with the NAS IP address.

- If you set your NAS as a DHCP client, it might have obtained a new IP address from the DHCP server on your network. Use NAS Discovery included in the Support CD to find the NAS IP address.
- You may also use **http://[NAS name]** to access the NAS Web GUI.

Does my NAS support the LPR protocol for sharing a printer?

No, this NAS does not support the LPR protocol. Use Windows® network printer service to set up a shared printer.



What is the benefit of connecting my NAS directly to a computer?

You may connect your NAS to a computer via an RJ-45 cable and use it as an external HDD for expanding your computer's storage capacity.

To connect your NAS to a computer:

1. Connect one end of the supplied RJ-45 cable to the Gigabit LAN port at the back of your NAS.
2. Connect the other end of the RJ-45 cable to your computer's LAN port.
3. Manually set your computer IP address to **192.168.0.x** (*x is any number between 1 and 254 except 100, **192.168.0.100** is the default NAS IP address*).



NOTE:

You may access the files and folders on the NAS through either of the following ways:

- Use the NAS network folder in Windows® My Computer to access the internal disks.
 - Use File Manager included in the Web GUI to access the internal/external disks.
-





Appendices

Notices

Federal Communications Commission Statement

This device complies with Part 15 of the FCC Rules. Operation is subject to the following two conditions:

1. This device may not cause harmful interference.
2. This device must accept any interference received, including interference that may cause undesired operation.

This equipment has been tested and found to comply with the limits for a digital device, pursuant to Part 15 of the FCC Rules. These limits are designed to provide reasonable protection against harmful interference when the equipment is operated in a commercial, industrial, or business environment. If this equipment is not installed and used in accordance with the instruction manual, it may cause harmful interference to network communications. Operation of this equipment in a public area is likely to cause harmful interference, in which case the user will be required to correct the interference at his own expense.

CE Mark Warning

In a domestic environment, this product may cause radio interference, in which case the user may be required to take adequate measures.

Operation Channels: Ch1~11 for N. America, Ch1~14 Japan, Ch1~13 Europe (ETSI)



GNU General Public License

Licensing information

This product includes copyrighted third-party software licensed under the terms of the GNU General Public License. Please see The GNU General Public License for the exact terms and conditions of this license. We include a copy of the GPL with every CD shipped with our product. All future firmware updates will also be accompanied with their respective source code. Please visit our web site for updated information. Note that we do not offer direct support for the distribution.

GNU GENERAL PUBLIC LICENSE

Version 2, June 1991

Copyright (C) 1989, 1991 Free Software Foundation, Inc.
59 Temple Place, Suite 330, Boston, MA 02111-1307 USA

Everyone is permitted to copy and distribute verbatim copies of this license document, but changing it is not allowed.

Preamble

The licenses for most software are designed to take away your freedom to share and change it. By contrast, the GNU General Public License is intended to guarantee your freedom to share and change free software--to make sure the software is free for all its users. This General Public License applies to most of the Free Software Foundation's software and to any other program whose authors commit to using it. (Some other Free Software Foundation software is covered by the GNU Library General Public License instead.) You can apply it to your programs, too.

When we speak of free software, we are referring to freedom, not price. Our General Public Licenses are designed to make sure that you have the freedom to distribute copies of free software (and charge for this service if you wish), that you receive source code or can get it if you want it, that you can change the software or use pieces of it in new free programs; and that you know you can do these things.

To protect your rights, we need to make restrictions that forbid anyone to deny you these rights or to ask you to surrender the rights. These restrictions translate to certain responsibilities for you if you distribute copies of the software, or if you modify it.

For example, if you distribute copies of such a program, whether gratis or for a fee, you must give the recipients all the rights that you have. You must make sure that they, too, receive or can get the source code. And you must show them these terms so they know their rights.





We protect your rights with two steps: (1) copyright the software, and (2) offer you this license which gives you legal permission to copy, distribute and/or modify the software.

Also, for each author's protection and ours, we want to make certain that everyone understands that there is no warranty for this free software. If the software is modified by someone else and passed on, we want its recipients to know that what they have is not the original, so that any problems introduced by others will not reflect on the original authors' reputations.

Finally, any free program is threatened constantly by software patents. We wish to avoid the danger that redistributors of a free program will individually obtain patent licenses, in effect making the program proprietary. To prevent this, we have made it clear that any patent must be licensed for everyone's free use or not licensed at all.

The precise terms and conditions for copying, distribution and modification follow.

Terms & conditions for copying, distribution, & modification

0. This License applies to any program or other work which contains a notice placed by the copyright holder saying it may be distributed under the terms of this General Public License. The "Program", below, refers to any such program or work, and a "work based on the Program" means either the Program or any derivative work under copyright law: that is to say, a work containing the Program or a portion of it, either verbatim or with modifications and/or translated into another language. (Hereinafter, translation is included without limitation in the term "modification".) Each licensee is addressed as "you".

Activities other than copying, distribution and modification are not covered by this License; they are outside its scope. The act of running the Program is not restricted, and the output from the Program is covered only if its contents constitute a work based on the Program (independent of having been made by running the Program). Whether that is true depends on what the Program does.

1. You may copy and distribute verbatim copies of the Program's source code as you receive it, in any medium, provided that you conspicuously and appropriately publish on each copy an appropriate copyright notice and disclaimer of warranty; keep intact all the notices that refer to this License and to the absence of any warranty; and give any other recipients of the Program a copy of this License along with the Program.
You may charge a fee for the physical act of transferring a copy, and you may at your option offer warranty protection in exchange for a fee.





2. You may modify your copy or copies of the Program or any portion of it, thus forming a work based on the Program, and copy and distribute such modifications or work under the terms of Section 1 above, provided that you also meet all of these conditions:
 - a) You must cause the modified files to carry prominent notices stating that you changed the files and the date of any change.
 - b) You must cause any work that you distribute or publish, that in whole or in part contains or is derived from the Program or any part thereof, to be licensed as a whole at no charge to all third parties under the terms of this License.
 - c) If the modified program normally reads commands interactively when run, you must cause it, when started running for such interactive use in the most ordinary way, to print or display an announcement including an appropriate copyright notice and a notice that there is no warranty (or else, saying that you provide a warranty) and that users may redistribute the program under these conditions, and telling the user how to view a copy of this License. (Exception: if the Program itself is interactive but does not normally print such an announcement, your work based on the Program is not required to print an announcement.)

These requirements apply to the modified work as a whole. If identifiable sections of that work are not derived from the Program, and can be reasonably considered independent and separate works in themselves, then this License, and its terms, do not apply to those sections when you distribute them as separate works. But when you distribute the same sections as part of a whole which is a work based on the Program, the distribution of the whole must be on the terms of this License, whose permissions for other licensees extend to the entire whole, and thus to each and every part regardless of who wrote it.

Thus, it is not the intent of this section to claim rights or contest your rights to work written entirely by you; rather, the intent is to exercise the right to control the distribution of derivative or collective works based on the Program.

In addition, mere aggregation of another work not based on the Program with the Program (or with a work based on the Program) on a volume of a storage or distribution medium does not bring the other work under the scope of this License.

3. You may copy and distribute the Program (or a work based on it, under Section 2) in object code or executable form under the terms of Sections 1 and 2 above provided that you also do one of the following:
 - a) Accompany it with the complete corresponding machine-readable source code, which must be distributed under the terms of Sections 1 and 2 above on a medium customarily used for software interchange; or,





b) Accompany it with a written offer, valid for at least three years, to give any third party, for a charge no more than your cost of physically performing source distribution, a complete machine-readable copy of the corresponding source code, to be distributed under the terms of Sections 1 and 2 above on a medium customarily used for software interchange; or,

c) Accompany it with the information you received as to the offer to distribute corresponding source code. (This alternative is allowed only for noncommercial distribution and only if you received the program in object code or executable form with such an offer, in accord with Subsection b above.)

The source code for a work means the preferred form of the work for making modifications to it. For an executable work, complete source code means all the source code for all modules it contains, plus any associated interface definition files, plus the scripts used to control compilation and installation of the executable. However, as a special exception, the source code distributed need not include anything that is normally distributed (in either source or binary form) with the major components (compiler, kernel, and so on) of the operating system on which the executable runs, unless that component itself accompanies the executable.

If distribution of executable or object code is made by offering access to copy from a designated place, then offering equivalent access to copy the source code from the same place counts as distribution of the source code, even though third parties are not compelled to copy the source along with the object code.

4. You may not copy, modify, sublicense, or distribute the Program except as expressly provided under this License. Any attempt otherwise to copy, modify, sublicense or distribute the Program is void, and will automatically terminate your rights under this License. However, parties who have received copies, or rights, from you under this License will not have their licenses terminated so long as such parties remain in full compliance.
5. You are not required to accept this License, since you have not signed it. However, nothing else grants you permission to modify or distribute the Program or its derivative works. These actions are prohibited by law if you do not accept this License. Therefore, by modifying or distributing the Program (or any work based on the Program), you indicate your acceptance of this License to do so, and all its terms and conditions for copying, distributing or modifying the Program or works based on it.





6. Each time you redistribute the Program (or any work based on the Program), the recipient automatically receives a license from the original licensor to copy, distribute or modify the Program subject to these terms and conditions. You may not impose any further restrictions on the recipients' exercise of the rights granted herein. You are not responsible for enforcing compliance by third parties to this License.
7. If, as a consequence of a court judgment or allegation of patent infringement or for any other reason (not limited to patent issues), conditions are imposed on you (whether by court order, agreement or otherwise) that contradict the conditions of this License, they do not excuse you from the conditions of this License. If you cannot distribute so as to satisfy simultaneously your obligations under this License and any other pertinent obligations, then as a consequence you may not distribute the Program at all. For example, if a patent license would not permit royalty-free redistribution of the Program by all those who receive copies directly or indirectly through you, then the only way you could satisfy both it and this License would be to refrain entirely from distribution of the Program.

If any portion of this section is held invalid or unenforceable under any particular circumstance, the balance of the section is intended to apply and the section as a whole is intended to apply in other circumstances.

It is not the purpose of this section to induce you to infringe any patents or other property right claims or to contest validity of any such claims; this section has the sole purpose of protecting the integrity of the free software distribution system, which is implemented by public license practices. Many people have made generous contributions to the wide range of software distributed through that system in reliance on consistent application of that system; it is up to the author/donor to decide if he or she is willing to distribute software through any other system and a licensee cannot impose that choice.

This section is intended to make thoroughly clear what is believed to be a consequence of the rest of this License.

8. If the distribution and/or use of the Program is restricted in certain countries either by patents or by copyrighted interfaces, the original copyright holder who places the Program under this License may add an explicit geographical distribution limitation excluding those countries, so that distribution is permitted only in or among countries not thus excluded. In such case, this License incorporates the limitation as if written in the body of this License.





9. The Free Software Foundation may publish revised and/or new versions of the General Public License from time to time. Such new versions will be similar in spirit to the present version, but may differ in detail to address new problems or concerns.
Each version is given a distinguishing version number. If the Program specifies a version number of this License which applies to it and "any later version", you have the option of following the terms and conditions either of that version or of any later version published by the Free Software Foundation. If the Program does not specify a version number of this License, you may choose any version ever published by the Free Software Foundation.
10. If you wish to incorporate parts of the Program into other free programs whose distribution conditions are different, write to the author to ask for permission. For software which is copyrighted by the Free Software Foundation, write to the Free Software Foundation; we sometimes make exceptions for this. Our decision will be guided by the two goals of preserving the free status of all derivatives of our free software and of promoting the sharing and reuse of software generally.

NO WARRANTY

11. BECAUSE THE PROGRAM IS LICENSED FREE OF CHARGE, THERE IS NO WARRANTY FOR THE PROGRAM, TO THE EXTENT PERMITTED BY APPLICABLE LAW. EXCEPT WHEN OTHERWISE STATED IN WRITING THE COPYRIGHT HOLDERS AND/OR OTHER PARTIES PROVIDE THE PROGRAM "AS IS" WITHOUT WARRANTY OF ANY KIND, EITHER EXPRESSED OR IMPLIED, INCLUDING, BUT NOT LIMITED TO, THE IMPLIED WARRANTIES OF MERCHANTABILITY AND FITNESS FOR A PARTICULAR PURPOSE. THE ENTIRE RISK AS TO THE QUALITY AND PERFORMANCE OF THE PROGRAM IS WITH YOU. SHOULD THE PROGRAM PROVE DEFECTIVE, YOU ASSUME THE COST OF ALL NECESSARY SERVICING, REPAIR OR CORRECTION.
12. IN NO EVENT UNLESS REQUIRED BY APPLICABLE LAW OR AGREED TO IN WRITING WILL ANY COPYRIGHT HOLDER, OR ANY OTHER PARTY WHO MAY MODIFY AND/OR REDISTRIBUTE THE PROGRAM AS PERMITTED ABOVE, BE LIABLE TO YOU FOR DAMAGES, INCLUDING ANY GENERAL, SPECIAL, INCIDENTAL OR CONSEQUENTIAL DAMAGES ARISING OUT OF THE USE OR INABILITY TO USE THE PROGRAM (INCLUDING BUT NOT LIMITED TO LOSS OF DATA OR DATA BEING RENDERED INACCURATE OR LOSSES SUSTAINED BY YOU OR THIRD PARTIES OR A FAILURE OF THE PROGRAM TO OPERATE WITH ANY OTHER PROGRAMS), EVEN IF SUCH HOLDER OR OTHER PARTY HAS BEEN ADVISED OF THE POSSIBILITY OF SUCH DAMAGES.

END OF TERMS AND CONDITIONS





REACH

Complying with the REACH (Registration, Evaluation, Authorisation, and Restriction of Chemicals) regulatory framework, we published the chemical substances in our products at ASUS REACH website at <http://csr.asus.com/english/index.aspx>.

ASUS contact information

ASUSTeK COMPUTER INC. (Asia Pacific)

Address 15 Li-Te Road, Peitou, Taipei, Taiwan 11259
Website www.asus.com.tw

Technical Support

Telephone +886228943447
Support Fax +886228907698
Online support support.asus.com*

ASUS COMPUTER INTERNATIONAL (America)

Address 800 Corporate Way, Fremont, CA 94539, USA
Telephone +15029550883
Fax +15029338713
Website usa.asus.com
Online support support.asus.com*

ASUS COMPUTER GmbH (Germany and Austria)

Address Harkort Str. 21-23, D-40880 Ratingen, Germany
Fax +492102959911
Website www.asus.de
Online contact www.asus.de/sales*

Technical Support

Telephone (Component) +491805010923**
Telephone (System/Notebook/Eee/LCD) +491805010920**
Fax +492102959911
Online support support.asus.com*

* Available on this site is an online Technical Inquiry Form that you can fill out to contact technical support.

** EUR 0.14/minute from a German fixed landline; EUR 0.42/minute from a mobile phone.



Authorized distributor information

Manufacturer:	ASUSTeK Computer Inc.	
	Tel:	+886-2-2894-3447
	Address:	No. 150, LI-TE RD., PEITOU, TAIPEI 112, TAIWAN
Authorised representative in Europe:	ASUS Computer GmbH	
	Address:	HARKORT STR. 21-23, 40880 RATINGEN, GERMANY
Authorised distributors in Turkey:	BOGAZICI BIL GISAYAR SAN. VE TIC. A.S.	
	Tel:	+90 212 3311000
	Address:	AYAZAGA MAH. KEMERBURGAZ CAD. NO.10 AYAZAGA/ISTANBUL
	INDEX BILGISAYAR SISTEMLERI MUHENDISLIK SAN. VE TIC. A.S.	
	Tel:	+90 212 3312121
	Address:	AYAZAGA MAH. CENDERE YOLU NO.9 AYAZAGA/ ISTANBUL

EEE Yönetmeliğine Uygundur.