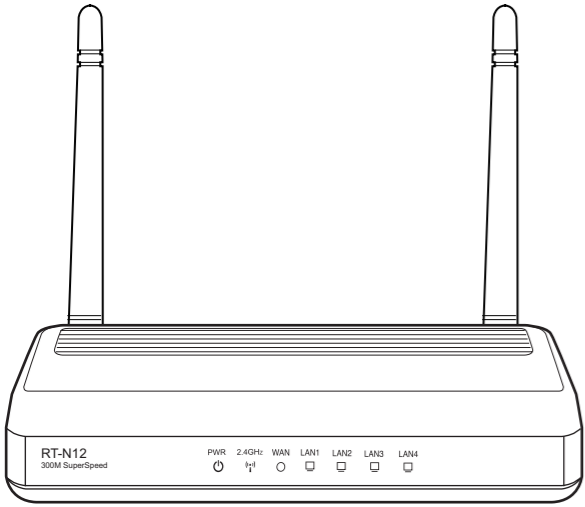




RT-N12 SuperSpeed N Router



Quick Start Guide



NOTE: For more details on the features of the wireless router, refer to the user manual included in the Utility CD.

ASUS authorized Turkish distributor information

Manufacturer

ASUSTeK Computer Inc.
Tel: +886-2-2894-3447
Address: No. 150, LI-TE RD., PEITOU, TAIPEI 112, TAIWAN

Authorised distributors in Turkey

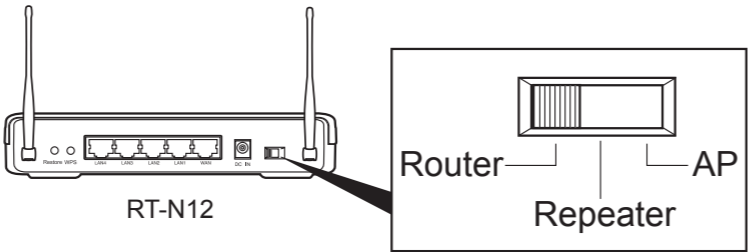
BOGAZICI BIL GİSAYAR SAN. VE TİC. A.Ş.
Tel: +90 212 3311000
Address: AYAZAGA MAH. KEMERBURGAZ CAD. NO.10 AYAZAGA/İSTANBUL

INDEX BİLGİSAYAR SİSTEMLERİ MUHENDİSLİK SAN. VE TİC. A.Ş.
Tel: +90 212 3312121
Address: AYAZAGA MAH. CENDERE YOLU NO.9 AYAZAGA/İSTANBUL

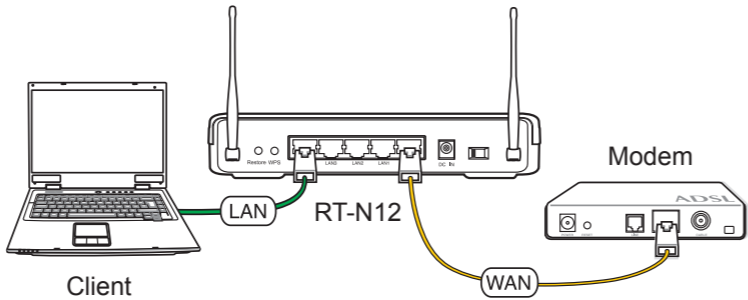
EEE Yönetmeliğine Uygundur.

Setting up a Home Network - Router Mode

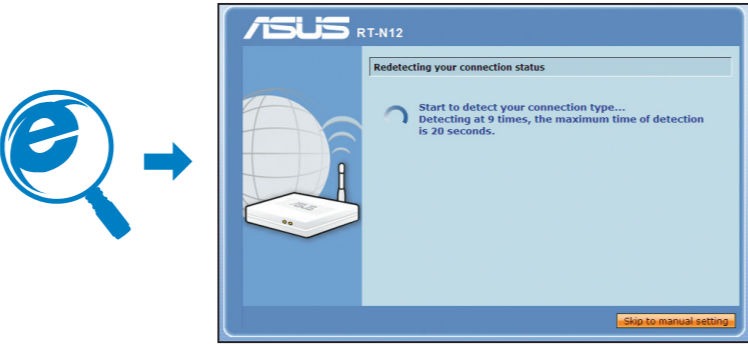
1. Choose the Router mode.



2. Connect your devices.



3. Launch the web browser and follow the Quick Internet Setup (QIS) steps.



4. Setup is completed.



English

1. Choose the Router mode.
2. Connect your devices.
3. Launch the web browser and follow the Quick Internet Setup (QIS) steps.
4. Setup is completed.

NOTE: For more details and advanced configuration instructions, refer to the user manual included in the support CD.

繁體中文

1. 選擇路由器模式。
2. 連接裝置。
3. 開啟網頁瀏覽器並按照快速網路網路設定 (QIS) 的步驟操作。
4. 設定完成。

注意：更多關於進階設定的說明，請參考驅動程式與應用程式光碟中的使用手冊。

简体中文

1. 选择路由器模式。
2. 连接设备。
3. 开启网页浏览器并按照快速互联网设置 (QIS) 的步骤操作。
4. 设置完成。

注意：更多关于高级配置的说明，请参考驱动程序与应用程序光盘中的用户手册。

Bahasa Indonesia

1. Pilih mode Router.
2. Sambungkan perangkat.
3. Aktifkan browser Web, kemudian ikuti langkah-langkah Quick Internet Setup (QIS).
4. Konfigurasi selesai.

CATATAN: Untuk informasi lebih rinci dan petunjuk konfigurasi lanjutan, lihat panduan pengguna yang tersedia di CD pendukung.

Bahasa Malaysia

1. Pilih mod Penghala.
2. Sambungkan peranti anda.
3. Lancarkan penyemak imbas web dan ikut langkah-langkah Persediaan Internet Pantas (QIS).
4. Persediaan selesai.

NOTA: Untuk mendapatkan butiran lanjut dan arahan konfigurasi lanjutan, rujuk manual pengguna yang disertakan dalam CD sokongan.

ไทย

1. เลือกโหมด Router (เราเตอร์)
2. เชื่อมต่ออุปกรณ์ของคุณ
3. เปิดเว็บเบราว์เซอร์ และทำตามขั้นตอน การตั้งค่าอินเทอร์เน็ตด่วน (QIS)
4. การตั้งค่าเสร็จสมบูรณ์

หมายเหตุ: สำหรับรายละเอียดเพิ่มเติมและขั้นตอนการกำหนดค่าขั้นสูง ให้ดูคู่มือผู้ใช้ที่หามาในแผ่น CD สับสนุน

Türkçe

1. Yönlendirici modunu seçin.
2. Aygıtlarınızı bağlayın.
3. Web tarayıcınızı açın ve Quick Internet Setup (Hızlı İnternet Kurulumu) (QIS) adımlarını izleyin.
4. Kurulum tamamlanır.

NOT: Daha fazla bilgi ve gelişmiş yapılandırma talimatları için, yardım CD'sinde bulunan kullanma kılavuzuna bakınız.



电子信息产品污染控制标示：图中之数字为产品之环保使用期限。仅指电子信息产品中含有的有毒有害物质或元素不致发生外泄或突变从而对环境造成污染或对人身、财产造成严重损害的期限。

部件名称	有害物质或元素					
	铅 (Pb)	汞 (Hg)	镉 (Cd)	六价铬 (Cr(VI))	多溴联苯 (PBB)	多溴二苯醚 (PBDE)
印刷电路板及其电子组件	×	○	○	○	○	○
外壳	×	○	○	○	○	○
电源适配器	×	○	○	○	○	○
外部信号连接头及线材	×	○	○	○	○	○
中央处理器与内存	×	○	○	○	○	○

○：表示该有毒有害物质在该部件所有均质材料中的含量均在 SJ/T 11363-2006 标准规定的限量要求以下。

×：表示该有毒有害物质至少在该部件的某一均质材料中的含量超出 SJ/T 11363-2006 标准规定的限量要求，然该部件仍符合欧盟指令 2002/95/EC 的规范。

备注：此产品所标示之环保使用期限，系指在一般正常使用状况下。

DGT Warning

經型式認證合格之低功率射頻電機，非經許可，公司、商號或使用者均不得擅自變更頻率、加大功率或變更原設計之特性及功能。

低功率射頻電機之使用不得影響飛航安全及干擾合法通信；經發現有干擾現象時，應立即停用，並改善至無干擾時方得繼續使用。

前項合法通信，指依電信法規定作業之無線電通信。

低功率射頻電機須忍受合法通信或工業、科學及醫療用電波輻射性電機設備之干擾。

Federal Communications Commission Statement

This device complies with Part 15 of the FCC Rules. Operation is subject to the following two conditions:

- This device may not cause harmful interference.
- This device must accept any interference received, including interference that may cause undesired operation.

This equipment has been tested and found to comply with the limits for a class B digital device, pursuant to part 15 of the FCC Rules. These limits are designed to provide reasonable protection against harmful interference in a residential installation.

This equipment generates, uses and can radiate radio frequency energy and, if not installed and used in accordance with the instructions, may cause harmful interference to radio communications. However, there is no guarantee that interference will not occur in a particular installation. If this equipment does cause harmful interference to radio or television reception, which can be determined by turning the equipment off and on, the user is encouraged to try to correct the interference by one or more of the following measures:

- Reorient or relocate the receiving antenna.
- Increase the separation between the equipment and receiver.
- Connect the equipment into an outlet on a circuit different from that to which the receiver is connected.
- Consult the dealer or an experienced radio/TV technician for help.



CAUTION: Any changes or modifications not expressly approved by the party responsible for compliance could void the user's authority to operate the equipment.

Prohibition of Co-location

This device and its antenna(s) must not be co-located or operating in conjunction with any other antenna or transmitter.

Safety Information

To maintain compliance with FCC's RF exposure guidelines, this equipment should be installed and operated with minimum distance 20cm between the radiator and your body. Use on the supplied antenna.

Declaration of Conformity for R&TTE directive 1999/5/EC

Essential requirements – Article 3

Protection requirements for health and safety – Article 3.1a

Testing for electric safety according to EN 60950-1 has been conducted. These are considered relevant and sufficient.

Protection requirements for electromagnetic compatibility – Article 3.1b

Testing for electromagnetic compatibility according to EN 301 489-1 and EN 301 489-17 has been conducted. These are considered relevant and sufficient.

Effective use of the radio spectrum – Article 3.2

Testing for radio test suites according to EN 300 328- 2 has been conducted. These are considered relevant and sufficient.

CE Mark Warning

This is a Class B product, in a domestic environment, this product may cause radio interference, in which case the user may be required to take adequate measures.

Operation Channels: Ch1~11 for N. America, Ch1~14 Japan, Ch1~13 Europe (ETSI)

IC Warning

The Class B digital apparatus meets all requirements of the Canadian Interference-Causing Equipment Regulation.

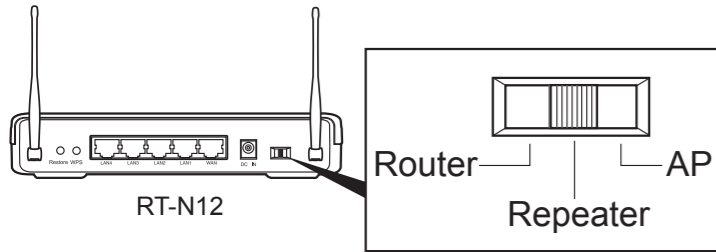
Cet appareil numérique de la class B respecte toutes les exigences du Reglement sur le materiel brouilleur du Canada.

REACH

Complying with the REACH (Registration, Evaluation, Authorisation, and Restriction of Chemicals) regulatory framework, we published the chemical substances in our products at ASUS REACH website at <http://green.asus.com/english/REACH.htm>.

Extending Your Wireless Network - Repeater Mode

1. Choose the Repeater mode.



English

1. Choose the Repeater mode.
2. Connect your devices.
3. Launch the web browser and follow the Quick Internet Setup (QIS) steps.
4. Setup is completed.

繁體中文

1. 選擇中繼器模式。
2. 連接裝置。
3. 開啟網頁瀏覽器並按照快速網路設定 (QIS) 的步驟操作。
4. 設定完成。

简体中文

1. 选择中继器模式。
2. 连接设备。
3. 开启网页浏览器并按照快速互联网设置 (QIS) 的步骤操作。
4. 设置完成。

Bahasa Indonesia

1. Pilih mode Repeater.
2. Sambungkan perangkat.
3. Aktifkan browser Web, kemudian ikuti langkah-langkah Quick Internet Setup (QIS).
4. Konfigurasi selesai.

Bahasa Malaysia

1. Pilih mod Pengulang.
2. Sambungkan peranti anda.
3. Lancarkan penyemak imbas web dan ikut langkah-langkah Persediaan Internet Pantas (QIS).
4. Persediaan selesai.

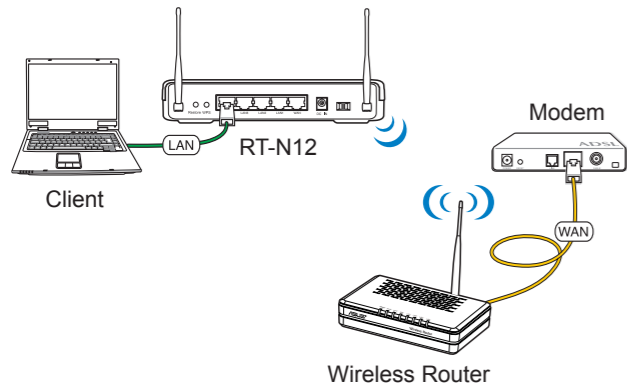
ไทย

1. เลือกโหมด Repeater (รีพีตเตอร์)
2. เชื่อมต่ออุปกรณ์ของคุณ
3. เปิดเว็บเบราว์เซอร์ และทำตามขั้นตอน การตั้งค่าอินเทอร์เน็ตด่วน (QIS)
4. การตั้งค่าเสร็จสมบูรณ์

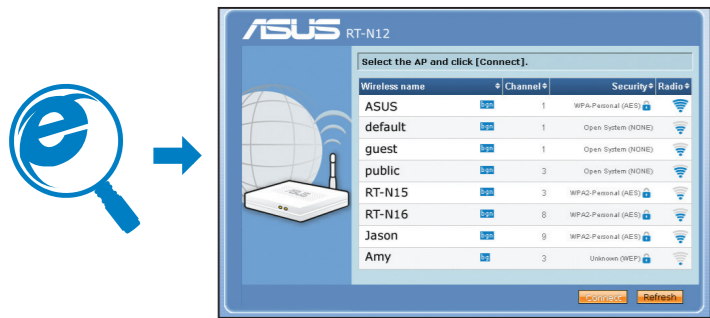
Türkçe

1. Yineleyici modunu seçin.
2. Aygıtlarınızı bağlayın.
3. Web tarayıcınızı açın ve Quick Internet Setup (Hızlı İnternet Kurulumu) (QIS) adımlarını izleyin.
4. Kurulum tamamlanır.

2. Connect your devices.



3. Launch the web browser and follow the Quick Internet Setup (QIS) steps.



4. Setup is completed.



WiFi Networking Clients

USB-N11

- IEEE 802.11n Draft 2.0 compliant
- High speed networking for fast download, file transfer and media streaming
- EZLink: Easy wireless setup with the WPS push button.

WL-130N

- IEEE 802.11n Draft 2.0 compliant and backward-compatible with 802.11b/g WLAN devices
- Suitable for seamless multimedia streaming
- Desktop / magnetic antenna included
- Support WEP, WPA, and WPA2 for enhanced security
- Windows® Vista Support

WL-160N

- World's smallest 802.11n USB 2.0 Wireless Card
- WiFi Alliance 802.11 b/g/n Draft 2.0 Certified
- Mac OS Support and Windows® Vista Support

WL-167g

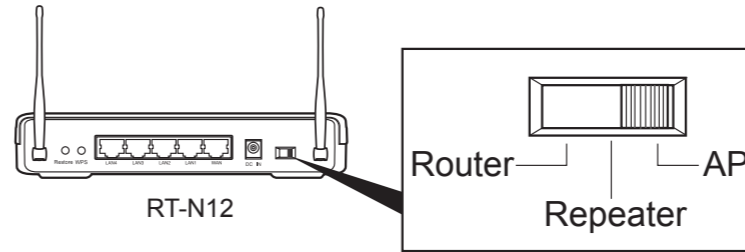
- IEEE802.11g compliant
- Up to 54Mbps data transmission rate

WL-169gE

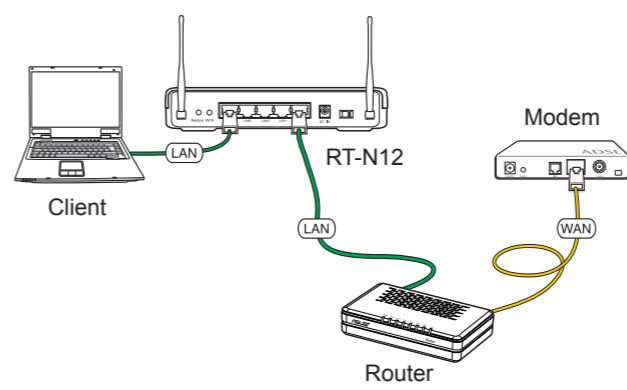
Simply plug it into your computer's USB port to experience the freedom of wireless connection.

Extending Your Wired Network - AP Mode

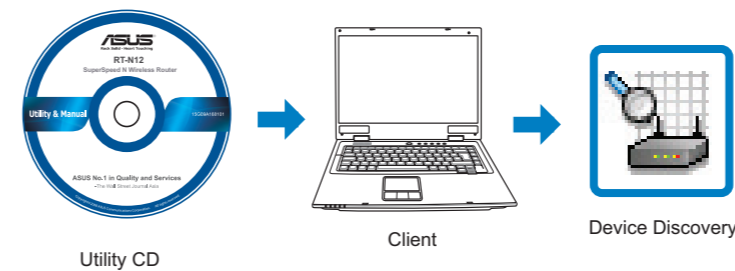
1. Choose the AP mode.



2. Connect your devices.



3. Launch the Device Discovery utility and configure the security settings.



4. Setup is completed.



English

1. Choose the AP mode.
2. Connect your devices.
3. Launch the Device Discovery utility and configure the security settings.
4. Setup is completed.

繁體中文

1. 選擇基地台模式。
2. 連接裝置。
3. 啟動 Device Discovery 應用程式並進行安全設定。
4. 設定完成。

简体中文

1. 选择AP模式。
2. 连接设备。
3. 启动 Device Discovery 应用程序并进行安全设置。
4. 设置完成。

Bahasa Indonesia

1. Pilih mode AP.
2. Sambungkan perangkat.
3. Aktifkan utilitas Device Discovery (Pemulihan Perangkat), kemudian konfigurasi pengaturan keamanan.
4. Konfigurasi selesai.

Bahasa Malaysia

1. Pilih mod AP.
2. Sambungkan peranti anda.
3. Lancarkan utiliti Penemuan Peranti dan konfigurasi seting keselamatan.
4. Persediaan selesai.

ไทย

1. เลือกโหมด AP
2. เชื่อมต่ออุปกรณ์ของคุณ
3. เปิดยูทิลิตี้ Device Discovery (การสำรวจอุปกรณ์) และกำหนดการตั้งค่าด้านความปลอดภัย
4. การตั้งค่าเสร็จสมบูรณ์

Türkçe

1. AP modunu seçin.
2. Aygıtlarınızı bağlayın.
3. Device Discovery yardımcı programını başlatın ve güvenlik ayarlarını yapılandırın.
4. Kurulum tamamlanır.

EC Declaration of Conformity



We, the undersigned,	
Manufacturer:	ASUSTek COMPUTER INC.
Address, City:	No. 150, LI-TE RD., PEITOU, TAIPEI 112, TAIWAN R.O.C.
Country:	TAIWAN
Authorized representative in Europe:	ASUS COMPUTER GmbH
Address, City:	HARKORT STR. 21-23, 40880 RATINGEN
Country:	GERMANY

declare the following apparatus:

Product name :	ASUS Wireless SuperSpeedN Router
Model name :	RT-N12

conform with the essential requirements of the following directives:

2004/108/EC-EMC Directive	
<input checked="" type="checkbox"/> EN 55022:2006	<input checked="" type="checkbox"/> EN 55024:1998+A1:2001+A2:2003
<input checked="" type="checkbox"/> EN 61000-3-2:2006	<input checked="" type="checkbox"/> EN 61000-3-3:1995+A1:2001+A2:2005
<input checked="" type="checkbox"/> EN 55013:2001+A1:2003+A2:2006	<input checked="" type="checkbox"/> EN 55020:2007

1999/5/EC-R & TTE Directive	
<input checked="" type="checkbox"/> EN 300 328 V1.7.1(2006-10)	<input checked="" type="checkbox"/> EN 301 489-1 V1.8.1(2008-04)
<input checked="" type="checkbox"/> EN 301 489-3 V1.4.1(2008-05)	<input checked="" type="checkbox"/> EN 301 489-3 V1.4.1(2002-08)
<input checked="" type="checkbox"/> EN 300 440-2 V1.2.1(2008-03)	<input checked="" type="checkbox"/> EN 301 489-4 V1.3.1(2002-08)
<input checked="" type="checkbox"/> EN 301 511 V9.0.2(2003-03)	<input checked="" type="checkbox"/> EN 301 489-7 V1.3.1(2005-11)
<input checked="" type="checkbox"/> EN 301 908-1 V3.2.1(2007-05)	<input checked="" type="checkbox"/> EN 301 489-9 V1.4.1(2007-11)
<input checked="" type="checkbox"/> EN 301 908-2 V3.2.1(2007-05)	<input checked="" type="checkbox"/> EN 301 489-17 V1.3.2(2008-04)
<input checked="" type="checkbox"/> EN 301 893 V1.4.1(2005-03)	<input checked="" type="checkbox"/> EN 301 489-24 V1.4.1(2007-09)
<input checked="" type="checkbox"/> EN 50390:2001	<input checked="" type="checkbox"/> EN 302 326-2 V1.2.2(2007-06)
<input checked="" type="checkbox"/> EN 50371:2002	<input checked="" type="checkbox"/> EN 302 326-3 V1.3.1(2007-09)
<input checked="" type="checkbox"/> EN 62311:2008	<input checked="" type="checkbox"/> EN 301 357-2 V1.3.1(2006-05)
<input checked="" type="checkbox"/> EN 50385:	

2006/95/EC-LVD Directive	
<input checked="" type="checkbox"/> EN 60950-1:2001+A11:2004	<input type="checkbox"/> EN 60065:2002+A1:2006

CE marking



(EC conformity marking)

Position : CEO
Name : **Jerry Shen**
Declaration Date: Jul. 28, 2009
Year to begin affixing CE marking:2009
Signature : _____