



RT-N12 C1 SuperSpeed N Router



Quick Start Guide

NOTE: For more details on the features of the wireless router, refer to the user manual included in the Utility CD.

EC Declaration of Conformity



We, the undersigned,	
Manufacturer:	ASUSTek COMPUTER INC.
Address, City:	No. 150, LI-TE RD., PEITOU, TAIPEI 112, TAIWAN R.O.C.
Country:	TAIWAN
Authorized representative in Europe:	ASUS COMPUTER GmbH
Address, City:	HARKORT STR. 21-23, 40880 RATINGEN
Country:	GERMANY
declare the following apparatus:	
Product name :	Wireless-N Router
Model name :	RT-N12C1
conform with the essential requirements of the following directives:	
2004/108/EC-EMC Directive	
<input checked="" type="checkbox"/> EN 55022:2006+A1:2007	<input checked="" type="checkbox"/> EN 55024:1998+A1:2001+A2:2003
<input checked="" type="checkbox"/> EN 61000-3-2:2009	<input checked="" type="checkbox"/> EN 61000-3-3:2008
<input checked="" type="checkbox"/> EN 55013:2001+A1:2003+A2:2006	<input checked="" type="checkbox"/> EN 55020:2007
1999/5/EC-R & TTE Directive	
<input checked="" type="checkbox"/> EN 300 328 V1.7.1(2006-10)	<input checked="" type="checkbox"/> EN 301 489-1 V1.8.1(2008-04)
<input type="checkbox"/> EN 300 440-1 V1.4.1(2008-05)	<input type="checkbox"/> EN 301 489-3 V1.4.1(2002-08)
<input type="checkbox"/> EN 300 440-2 V1.2.1(2008-03)	<input type="checkbox"/> EN 301 489-4 V1.3.1(2002-08)
<input type="checkbox"/> EN 301 511 V9.0.2(2003-03)	<input type="checkbox"/> EN 301 489-7 V1.3.1(2005-11)
<input type="checkbox"/> EN 301 908-1 V3.2.1(2007-05)	<input type="checkbox"/> EN 301 489-9 V1.4.1(2007-11)
<input type="checkbox"/> EN 301 908-2 V3.2.1(2007-05)	<input checked="" type="checkbox"/> EN 301 489-17 V2.1.1(2009-05)
<input type="checkbox"/> EN 301 893 V1.4.1(2005-03)	<input type="checkbox"/> EN 301 489-24 V1.4.1(2007-09)
<input type="checkbox"/> EN 302 544-2 V1.1.1(2009-01)	<input type="checkbox"/> EN 302 326-2 V1.2.2(2007-06)
<input type="checkbox"/> EN 50360:2001	<input type="checkbox"/> EN 302 326-3 V1.3.1(2007-09)
<input type="checkbox"/> EN 50371:2002	<input type="checkbox"/> EN 301 357-2 V1.3.1(2006-05)
<input checked="" type="checkbox"/> EN 50385:2002	<input type="checkbox"/> EN 302 623 V1.1.1(2009-01)
2006/95/EC-LVD Directive	
<input type="checkbox"/> EN 60950-1 / A11:2009	<input type="checkbox"/> EN 60065:2002+A1:2006+A11:2008
<input checked="" type="checkbox"/> EN 60950-1 / A12:2011	<input type="checkbox"/> EN 60065:2002 / A12:2011
2009/125/EC-ErP Directive	
Regulation (EC) No. 1275/2008	Regulation (EC) No. 278/2009
<input type="checkbox"/> EN 62301:2005	<input checked="" type="checkbox"/> EN 62301:2005
Regulation (EC) No. 642/2009	
<input type="checkbox"/> EN 62301:2005	

CE marking



(EC conformity marking)

Position : **CEO**
Name : **Jerry Shen**

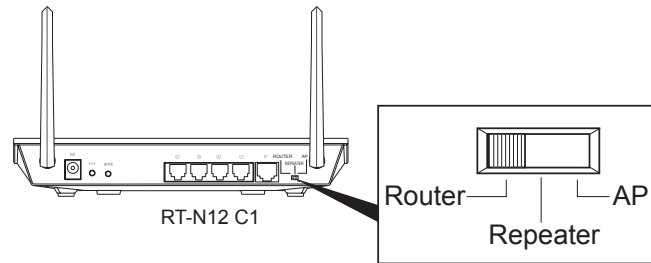
Signature : _____

Declaration Date: Nov. 28, 2011
Year to begin affixing CE marking:2011

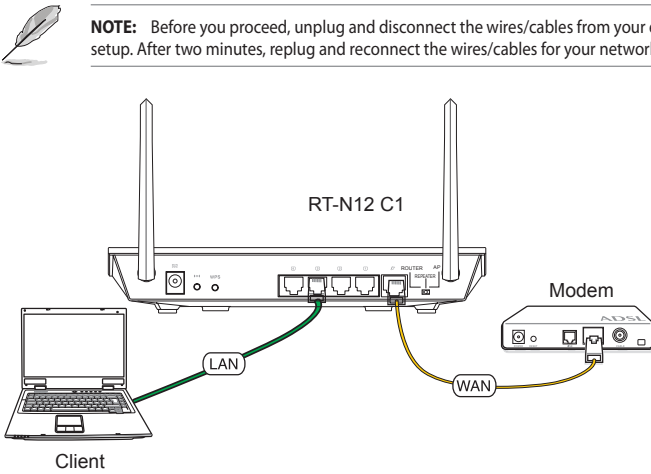
A6980 / First Edition / Nov. 2011

Setting up a Home Network - Router Mode

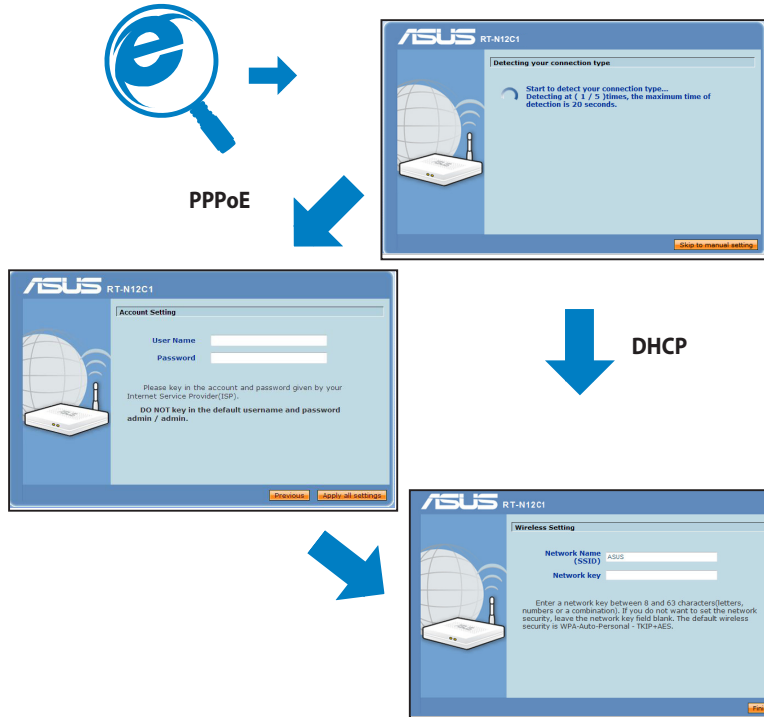
1. Choose the Router mode.



2. Connect your devices.

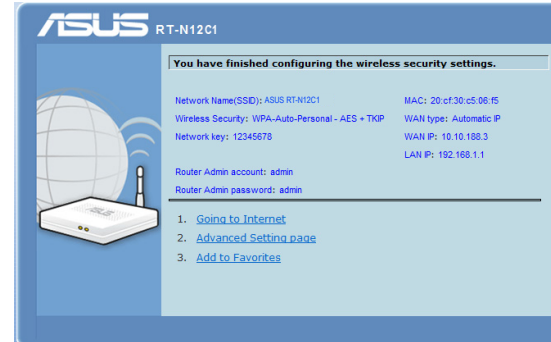


3. Launch the web browser and follow the Quick Internet Setup (QIS) steps.



NOTE: If the QIS web page does not appear after launching the web browser, disable the proxy settings on the web browser.

4. Setup is completed.



繁體中文

- 選擇路由模式。
 - 連接裝置。
 - 在開始操作之前，請先拔掉數據機上連接的所有纜線。兩分鐘後再重新連接。
 - 開啟網頁瀏覽器並按照快速網路設定 (QIS) 的步驟操作。
 - 在開啟網頁瀏覽器後，若 QIS 頁面沒有出現，請嘗試關閉網頁瀏覽器的 Proxy 設定。
 - 設定完成。
- 简体中文**
- 选择路由模式。
 - 连接设备。
 - 在您开始操作之前，请先拔掉调制解调器上连接的所有线缆。两分钟后重新连接。
 - 开启网页浏览器并按照快速互联网设置 (QIS) 的步骤操作。
 - 开启网页浏览器后，若 QIS 页面没有出现，请尝试关闭网页浏览器的代理设置。
 - 设置完成。

Bahasa Indonesia

- Pilih mode Router.
 - Sambungkan perangkat.
 - CATATAN: Sebelum melanjutkan, lepas dan putuskan sambungan kabel dari pemasangan modem yang ada. Setelah dua menit, pasang dan sambungkan kembali kabel untuk lingkungan jaringan.
 - Aktifkan browser Web, kemudian ikuti langkah-langkah Quick Internet Setup (QIS).
 - CATATAN: Jika halaman Web QIS tidak muncul di layar setelah Anda mengaktifkan browser Web, nonaktifkan pengaturan proxy di browser Web.
 - Konfigurasi selesai.
- Bahasa Malaysia**
- Pilih mod Penghala.
 - Sambungkan peranti anda.
 - NOTA: Sebelum anda meneruskan, cabut plag dan tanggalkan wayar/kabel dari persediaan modem anda yang sedia ada. Selepas dua minit, pasang semula plag dan sambung semula wayar/kabel untuk persekitaran rangkaian anda.
 - Lancarkan penyemak imbas web dan ikut langkah-langkah Persediaan Internet Pantas (QIS).
 - NOTA: Jika halaman web QIS tidak muncul selepas melancarkan penyemak imbas web, nyahdayakan tetapan proksi pada penyemak imbas web.
 - Persediaan selesai.

ไทย

- เลือกโหมด Router (เราเตอร์)
 - เชื่อมต่ออุปกรณ์
 - หมายเหตุ: ก่อนที่จะดำเนินการ ให้ถอดปลั๊ก และตัดการเชื่อมต่อสายไฟ/สายเคเบิลต่างๆ จากโมเด็มที่มีอยู่ของคุณออกเสียก่อน หลังจากสองนาที ให้เสียบปลั๊ก และเชื่อมต่อสายไฟ/สายเคเบิลต่างๆ สำหรับสภาพแวดล้อมเครือข่ายของคุณใหม่
 - เปิดเว็บเบราว์เซอร์ และทำตามขั้นตอน การตั้งค่าอินเทอร์เน็ตด่วน (QIS)
 - หมายเหตุ: ถ้าเว็บเพจ QIS ไม่ปรากฏขึ้นหลังจากการเปิดเว็บเบราว์เซอร์ ให้ปิดการทำงานของงานการตั้งค่าหรือขยับเว็บเบราว์เซอร์
 - การตั้งค่าเสร็จสมบูรณ์
- Türkçe**
- Yönlendirici modunu seçin.
 - Aygıtlarınızı bağlayın.
 - NOT: Devam etmeden önce, kabloları/telleri mevcut modem kurulumunuzdan çıkartın ve bağlantılarını kesin. İki dakika sonra ağ ortamınıza için kabloları/telleri yeniden takın ve bağlantılarını yeniden sağlayın.
 - Web tarayıcınızı açın ve Quick Internet Setup (Hızlı İnternet Kurulumu) (QIS) adılarını izleyin.
 - NOT: Eger QIS web sayfası web tarayıcınızı başlattıktan sonra görünmezse, proxy ayarlarını web tarayıcısında engelleyin.
 - Kurulum tamamlanır.



FCC Compliance



C-Tick Mark



CE

ASUS Recycling/Takeback Services

ASUS recycling and takeback programs come from our commitment to the highest standards for protecting our environment. We believe in providing solutions for you to be able to responsibly recycle our products, batteries, other components, as well as the packaging materials. Please go to <http://csr.asus.com/english/Takeback.htm> for the detailed recycling information in different regions.

REACH

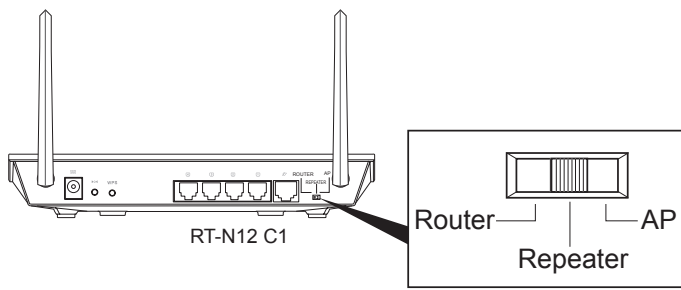
Complying with the REACH (Registration, Evaluation, Authorisation, and Restriction of Chemicals) regulatory framework, we published the chemical substances in our products at ASUS REACH website at <http://csr.asus.com/english/REACH.htm>

Manufacturer:	ASUSTek Computer Inc. Tel: +886-2-2894-3447 Address: No. 150, LI-TE RD., PEITOU, TAIPEI 112, TAIWAN
Authorised representative in Europe:	ASUS Computer GmbH Address: HARKORT STR. 21-23, 40880 RATINGEN, GERMANY
Authorised distributors in Turkey:	BOGAZICI BIL GİSAYAR SAN. VETİC. A.Ş. Tel: +90 212 3311000 Address: AYAZAGA MAH. KEMERBURGAZ CAD. NO.10 AYAZAGA/İSTANBUL CİZGİ Elektronik San. Tic. Ltd. Şti. Tel: +90 212 3567070 Address: CEMAL SURURI CD. HALİM MERİC İS MERKEZİ No: 15/C D:5-6 34394 MECİDİYEKÖY/İSTANBUL

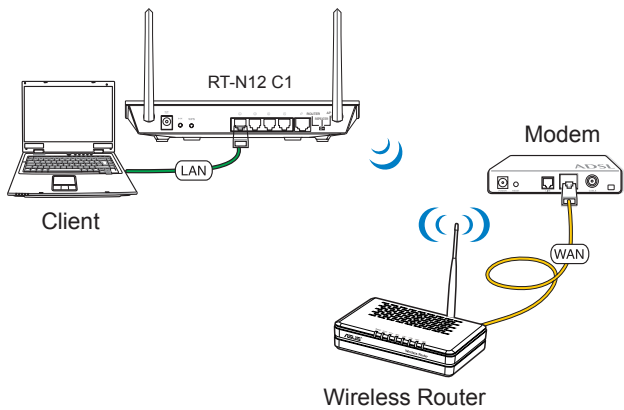
EEE Yönetmeliğine Uygundur.

Extending Your Wireless Network - Repeater Mode

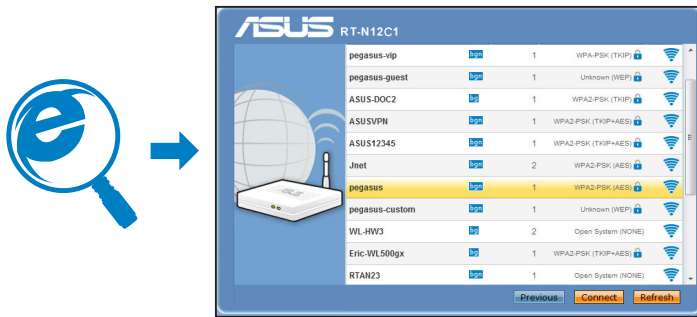
1. Choose the Repeater mode.



2. Connect your devices.

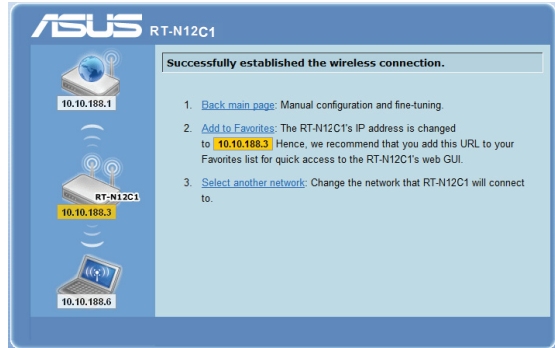


3. Launch the web browser, select a wireless network from the list, and click Connect.



NOTE: If the QIS web page does not appear after launching the web browser, disable the proxy settings on the web browser.

4. Setup is completed.



繁體中文

- 選擇中繼器模式。
- 連接裝置。
- 開啟網頁瀏覽器，從清單中選擇一個無線網路，接著點選 **連線 (Connect)**。
- 設定完成。

简体中文

- 选择中继器模式。
- 连接设备。
- 开启网页浏览器，从列表选择一个无线网络，然后点击【联机 (Connect)】。
- 设置完成。

Bahasa Indonesia

- Pilih mode Repeater.
- Sambungkan perangkat.
- Aktifkan browser Web, pilih jaringan nirkabel dari daftar, lalu klik Connect (Sambungkan).

CATATAN: Jika halaman Web QIS tidak muncul di layar setelah Anda mengaktifkan browser Web, nonaktifkan pengaturan proxy di browser Web.

Bahasa Malaysia

- Pilih mod Pengulang.
- Sambungkan peranti anda.
- Lancarkan penyemak imbas web, pilih rangkaian wayarles dari senarai, dan klik Sambung.

NOTA: Jika halaman web QIS tidak muncul selepas melancarkan penyemak imbas web, nyahdayakan tetapan proksi pada penyemak imbas web.

ไทย

- เลือกโหมด Repeater (รีพีตเตอร์)
- เชื่อมต่ออุปกรณ์ของคุณ
- เปิดเว็บเบราว์เซอร์ เลือกเครือข่ายไร้สายจากรายการ และคลิก Connect (เชื่อมต่อ)

หมายเหตุ: ถ้าเว็บเพจ QIS ไม่ปรากฏขึ้นหลังจากการเปิดเว็บเบราว์เซอร์ ให้ปิดการทำงานการตั้งค่าพร็อกซีบนเว็บเบราว์เซอร์

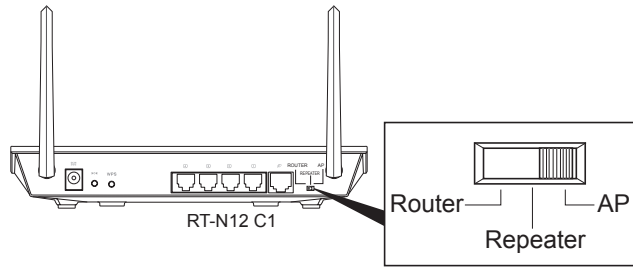
Türkçe

- Yineleyici modunu seçin.
- Aygıtlarınızı bağlayın.
- Web tarayıcısını başlatın, listeden kablolu bir ağ seçin ve Bağla'nı tıklayın.

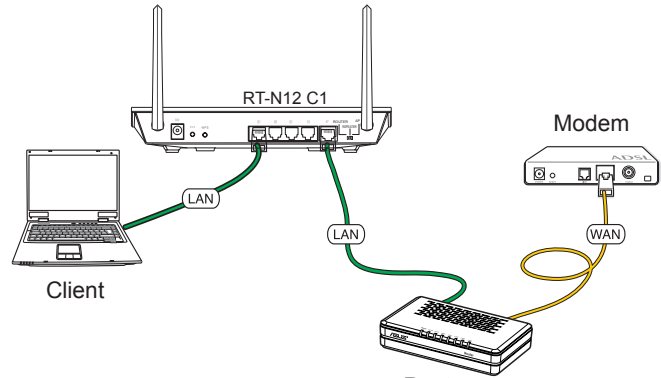
NOT: Eğer QIS web sayfası web tarayıcısını başlattıktan sonra görünmezse, proxy ayarlarını web tarayıcısında engelleyin.

Extending Your Wired Network - AP Mode

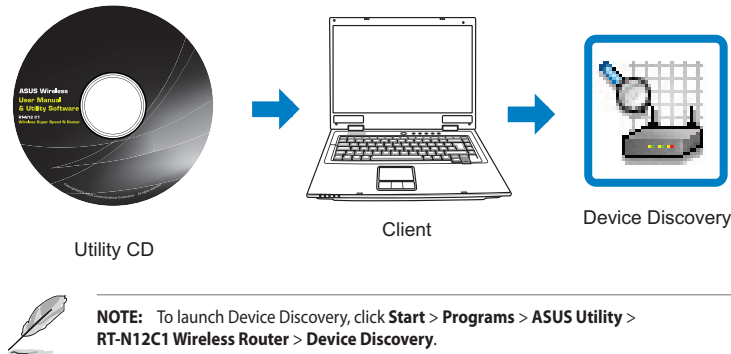
1. Choose the AP mode.



2. Connect your devices.



3. Launch the Device Discovery utility and configure the security settings.



NOTE: To launch Device Discovery, click **Start > Programs > ASUS Utility > RT-N12C1 Wireless Router > Device Discovery**.

4. Setup is completed.



繁體中文

- 選擇基地台 (AP) 模式。
- 連接裝置。
- 開啟 Device Discovery 應用程式並進行安全設定。
- 設定完成。

简体中文

- 选择 AP 模式。
- 连接设备。
- 开启 Device Discovery 应用程序并进行安全设置。
- 设置完成。

Bahasa Indonesia

- Pilih mode AP.
- Sambungkan perangkat.
- Aktifkan utilitas Device Discovery (Pemulihan Perangkat), kemudian konfigurasi pengaturan keamanan.
- Konfigurasi selesai.

Bahasa Malaysia

- Pilih mod AP.
- Sambungkan peranti anda.
- Lancarkan utiliti Penemuan Peranti dan konfigurasi seting keselamatan.
- Persediaan selesai.

ไทย

- เลือกโหมด AP
- เชื่อมต่ออุปกรณ์ของคุณ
- เปิดยูทิลิตี้ Device Discovery (การสำรวจอุปกรณ์) และกำหนดการตั้งค่าด้านความปลอดภัย
- การตั้งค่าเสร็จสมบูรณ์

Türkçe

- AP modunu seçin.
- Aygıtlarınızı bağlayın.
- Device Discovery yardımcı programını başlatın ve güvenlik ayarlarını yapılandırın.
- Kurulum tamamlanır.

ASUS Contact information

ASUSTeK COMPUTER INC. (Asia Pacific)

Address: 15 Li-Te Road, Peitou, Taipei, Taiwan 11259
Website: www.asus.com.tw

Technical Support

Telephone: +886228943447
Support Fax: +886228907698
Software download: support.asus.com*

ASUS COMPUTER INTERNATIONAL (America)

Address: 800 Corporate Way, Fremont, CA 94539, USA
Telephone: +15029550883
Fax: +15029338713
Website: usa.asus.com
Software download: support.asus.com*

ASUS COMPUTER GmbH (Germany and Austria)

Address: Harkort Str. 21-23, D-40880 Ratingen, Germany
Fax: +492102959911
Website: www.asus.com.de
Online contact: www.asus.com.de/sales

Technical Support

Telephone (Component): +491805010923
Telephone (System/Notebook/Eee/LCD): +491805010920
Fax: +492102959911
Online support: support.asus.com*

* Available on this site is an online Technical Inquiry Form that you can fill out to contact technical support.