



READ FIRST

CAUTION: To reduce the risk of electric shock, do not remove the cover. No user serviceable parts inside. Refer any servicing work to a qualified service technician.

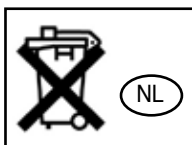
WARNING: To reduce the risk of fire or electric shock, do not expose this appliance to rain or moisture.



The symbol of an arrowhead lightning flash within a triangle, warns the user to the presence of uninsulated “dangerous voltage” within the product’s enclosure. This dangerous may be of sufficient magnitude to constitute a risk of electrical shock to persons.



The symbol of an exclamation point within a triangle warns the user to the presence of important operating maintenance or servicing instructions in this device’s user guide.



Do not dispose the battery with your regular household waste. Take it to a hazardous material collection point.

Disposal of Old Electrical & Electronic Equipment
(Applicable in the European Union and other European countries with separate collection systems)



The symbol of the crossed out wheeled bin on the product or on its packaging indicates that the product should not be placed in municipal waste. Instead, the product should be taken to a hazardous material collection point for recycling. By ensuring that this product is properly disposed, you will help prevent potential negative consequences for the environment and human health caused by inappropriate waste handling. The recycling of materials will help to conserve natural resources. For more detailed information about product recycling, contact your local city office, household waste disposal service or the shop where you purchased the product.

Safety Information

Before turning on the power for the first time, ensure the power cord is properly installed. Changes or modifications to this device not expressly approved by ASUS will void its warranty.

- Do not expose your device to moisture or liquids of any kind.
- Do not expose your device to extreme high or low temperatures.
- Do not expose your device to fire or heat source.
- Do not drop, throw or try to bend your device as rough treatment could damage it.
- Do not use any other accessories than ASUSTeK Computer Inc. or ASUSTeK originals intended for use with this product. Use of non-original accessories may result in loss of performance, damage to the product, fire, electric shock or injury. The warranty does not cover product failures which have been caused by use of non-original accessories.
- Do not keep the product in an area prone to dust and dirt. Only use a soft damp cloth to clean your product.
- If you will not be using the product for a while, store it in a place that is dry, free from damp, dust and extreme temperatures.

Do not obstruct the ventilation openings.

Always operate turning controls and switches as instructed in the manual.

For safety reasons, do not remove any covers or attempt to gain access to the inside of the product. Refer any servicing to qualified personnel.

Do not attempt to remove any screws, or open the casing of the unit. There are no user serviceable parts inside. Doing so will void your warranty. Refer all servicing to a qualified service technician.

Troubleshooting

Q. Why is it that I cannot hear any sound from the speaker?

- A. Try to reboot the Bluetooth device that you are trying to pair the speaker with, such as your computer or mobile phone. If this does not solve the issue then delete the pairing information and try pairing the Bluetooth device and speakers again.

Q. My device says 'Bluetooth Module not found'. What can I do?

- A. Your Bluetooth device cannot find its internal Bluetooth chip for some reason. Restarting your Bluetooth device should fix this problem. If it does not, please contact your Bluetooth device's manufacturer.

Q. My Bluetooth device would not pair with my phone.

- A. You need to ensure that the phone or computer you want to connect your Bluetooth device to support the A2DP (stereo Bluetooth) profile. The speakers will not support a mono Bluetooth profile. To ensure compatibility, check with your Bluetooth device's manufacturer.

Q. How far can my speaker be from the Bluetooth device and still play audio?

- A. The SP-BT23 will remain connected within a range of 10 meters (30 ft). Sound quality may start to grow weak after about 7 meters depending on your environment.

Q. Can other electrical devices interfere with the Bluetooth device?

- A. Bluetooth technology employs a technique called frequency hopping to constantly change the frequency at which it sends out data, reducing interference with wireless devices like cordless landline phones. Noise interference can occur if the Bluetooth device is used in close proximity with a microwave. Check if there are any such devices in the surroundings, and if so keep the distance between the SP-BT23 and such devices to at least 5 - 10 meters. Usually any interference will only cause a slight crackling sound. The frequency of Bluetooth is much higher than that of radio station bands.

Q. Can somebody else take control of my SP-BT23 if they are in range?

- A. No, the SP-BT23 can only connect to previous paired devices that have been authenticated. The pairing procedure creates an encrypted key known only to the two devices paired.

Declaration of Conformity

We, Manufacturer/Importer
(full address)


ASUS COMPUTER GmbH
HARKORT STR. 25
40880 RATINGEN, BRD. GERMANY

declare that the product
(description of the apparatus, system, installation to which it refers)

Bluetooth Speaker
SP-BT23

is in conformity with

(reference to the specification under which conformity is declared)
in accordance with 2004/108/EC-EMC Directive and 1995/5 EC-R & TTE Directive

- | | | | |
|---|---|--|--|
| <input checked="" type="checkbox"/> EN 300328-1 | Electromagnetic compatibility and Radio spectrum Matters (ERM); wideband transmission equipment operating in the 2.4GHz ISM band and using spread spectrum modulation techniques; Part 1: technical characteristics and test conditions | <input checked="" type="checkbox"/> EN 55022: 2006 | Limits and methods of measurement of radio disturbance characteristics of information technology equipment |
| <input checked="" type="checkbox"/> EN 300328-2 | Part2: Harmonized EN covering essential requirements under article 3.2 of the R&TTE | <input checked="" type="checkbox"/> EN 55024:1998+A1:2001+A2:2003 | Information Technology equipment-Immunity characteristics-Limits and methods of measurement |
| <input type="checkbox"/> EN 300386 | Electromagnetic compatibility and Radio spectrum Matters (ERM); Telecommunication equipment; Electromagnetic Compatibility (EMC) requirements | <input type="checkbox"/> EN 50360/ EN 50361 | the limitation of exposure of the general public to electromagnetic network fields (0 Hz to 300 GHz) International Commission on Non-Ionising Radiation Protection (1998), Guidelines for limiting exposure in time-varying electric, magnetic, and electromagnetic fields |
| <input checked="" type="checkbox"/> EN 301489 | Electromagnetic compatibility and Radio spectrum Matters (ERM); Electromagnetic compatibility(EMC) standard for radio equipment and services; Part 17: Specific conditions for wideband data and HIPERLAN equipment | <input checked="" type="checkbox"/> EN 61000-3-2 :2000+A2:2005 | Disturbances in supply systems caused |
| | | <input checked="" type="checkbox"/> EN 61000-3-3:1995+A1:2001 | Disturbances in supply systems caused |
| <input type="checkbox"/> EN301511 | Global System for Mobile communications(GSM) Harmonized EN for mobile stations in the GSM 900 And GSM 1800 bands covering essential requirements of article 3.2 of article 3.2 of the R&TTE directive(1999/5/EC) | <input type="checkbox"/> EN 55013 | Limits and methods of measurement of radio disturbance characteristics of broadcast receivers and associated equipment |
| <input type="checkbox"/> EN 301893 | Broadband Radio Access Networks (BRAN); 5 GHz high performance RLAN; Harmonized EN covering essential requirements of article 3.2 of the R&TTE Directive | <input type="checkbox"/> EN 55020 | Immunity from radio interference of broadcast receivers and associated equipment |
| | | <input checked="" type="checkbox"/> EN 50081-2 | Generic emission standard Part 2 Industrial environment |
| | | <input checked="" type="checkbox"/> EN 50082-2 | Generic immunity standard Part 2: Industrial environment |
| <input checked="" type="checkbox"/> CE marking |  (EC conformity marking) | | |
| The manufacturer also declares the conformity of above mentioned product with the actual required safety standards in accordance with LVD 2006/95 EC | | | |
| <input type="checkbox"/> EN 60065 | Safety requirements for mains operated electronic and related apparatus for household and similar general use | <input checked="" type="checkbox"/> EN 60950-1 | Safety for information technology equipment including electrical business equipment |
| <input type="checkbox"/> EN 60335 | Safety of household and similar electrical appliances | <input type="checkbox"/> EN 50091-1 | General and Safety requirements for uninterruptible power systems (UPS) |

Manufacturer/Importer

(Stamp)

Date : Oct. 30 , 2007

Signature : 
Name : Jonathan Tseng

Index

1. English.....	1
2. 繁體中文	4
3. 简体中文	7

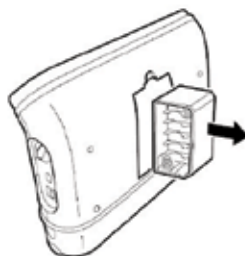
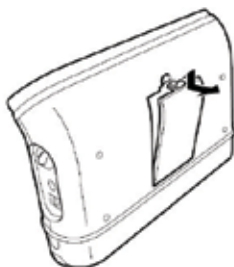
Getting Started

Before you start, check with the compatibility of your Bluetooth device with the ASUS SP-BT23 wireless portable speakers. The ASUS SP-BT23 wireless portable speakers comply with the Bluetooth Specification 1.2, that supports Advanced Audio Distribution Profile (A2DP) 1.0.

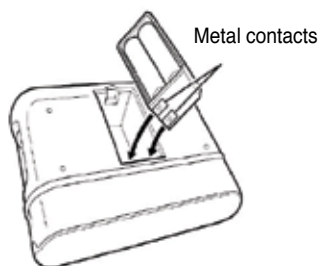
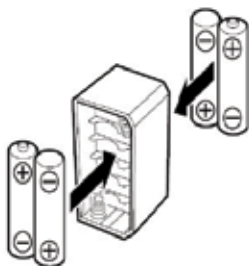
A. Powering your SP-BT23

1. Using AA batteries

- 1.1 Open the battery cover on the back of device.
- 1.2 Take out the battery holder.



- 1.3 Insert four AA batteries into the battery holder. Ensure the batteries are installed in the proper placement and polarity.
- 1.4 Insert the battery holder back into the battery compartment. Ensure that the metal contacts match the copper conductors at the bottom of the battery compartment.



2. Using the Power Charger

Insert the power adapter plug into the power socket (DC IN) on the side of your SP-BT23 and connect the adapter to a power outlet.

B. Pairing your SP-BT23 with a Bluetooth device

Before pairing your SP-BT23, locate the jog dial on the right side of your SP-BT23, then rotate clockwise to turn device on until the LED indicator flashes blue.

Pairing with a Bluetooth mobile phone

Your SP-BT23 can be used with a Bluetooth Mobile Phone equipped with A2DP Bluetooth stereo.

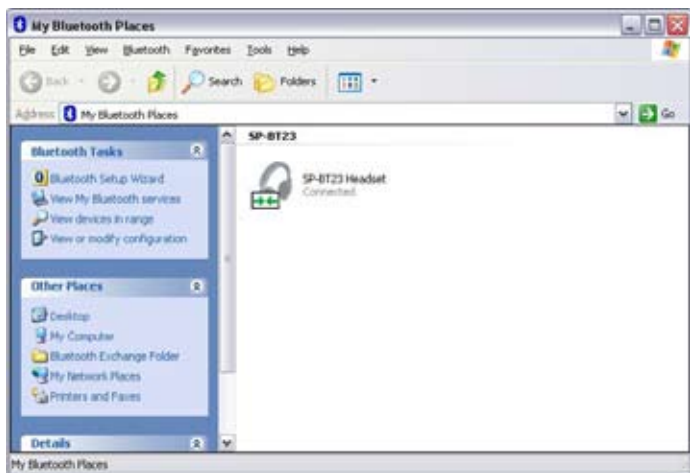
To pair:

1. Enable Bluetooth on your mobile phone then search for Bluetooth devices. Refer to your mobile phone's user guide for details.
2. From the list of Bluetooth devices found, select **SP-BT23**.
3. Key in the PIN code '0000' to authenticate pairing.

Pairing with your computer

Ensure that your computer comes with a built-in Bluetooth device or controller.

1. Double-click the Bluetooth icon on the taskbar.
2. Search for available devices in range.
3. From the list of available Bluetooth devices, select **SP-BT23** and when prompted, key in **0000** for the pin code.



Configuring Windows audio output

1. Open Control Panel and double click **Sound and Audio devices**.
2. Select the **Audio** tab.
3. Set the Sound Playback Default Device to **Bluetooth High Quality Audio**.
4. Click **OK**.



The power/connection LED turns on when the speaker is successfully connected to a Bluetooth audio source. If no connection is established within three minutes, the LED will blink and the device goes into idle mode. Try and connect again when necessary.



C. Connecting to a Bluetooth device using a cable

To connect the speakers to a Bluetooth device that has a 3.5mm audio connector, plug the cable into the line-in port on the side of the speakers and the audio connector on the device. Switch on the device then play audio.

D. Adjusting the volume

To set the volume of the speakers, rotate the jog dial located on the right side of the speakers.

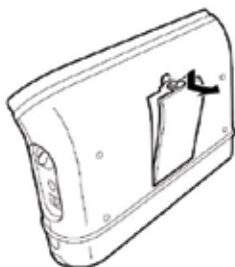
開始使用

在您開始之前，請與您的裝置製造商確認您的裝置是否可與華碩 SP-BT23 相容。華碩 SP-BT23 攜帶型藍牙立體聲喇叭相容藍牙規格 1.2，可支援 A2DP (Advanced Audio Distribution Profile) 1.0。

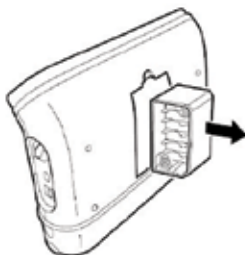
A. 為 SP-BT23 供電

1. 使用三號電池

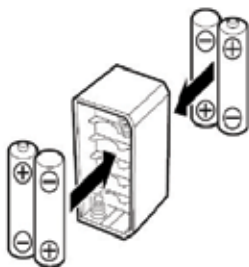
1.1 打開裝置後方的電池蓋。



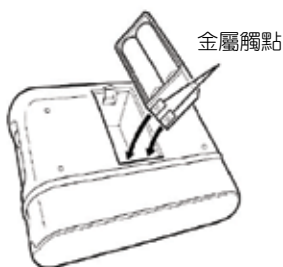
1.2 取出電池盒。



1.3 在電池盒中放入四顆三號電池。請確保電池確實放好且極性正確。



1.4 將裝好電池的電池盒放回電池槽。請確認金屬觸點已對準電池槽底部的銅製導電片。



2. 使用充電器

將電源充電器的一端插入 SP-BT23 側面的電源插孔 (DC IN)，另一端連接到電源插座。

B. 將 SP-BT23 與藍牙裝置配對

在配對 SP-BT23 之前，找到裝置右側的旋鈕，並按順時鐘方向旋轉，直到裝置上的 LED 指示燈呈藍色閃爍。

與藍牙手機配對

您的 SP-BT23 可與支援 A2DP 藍牙立體聲的手機配對。

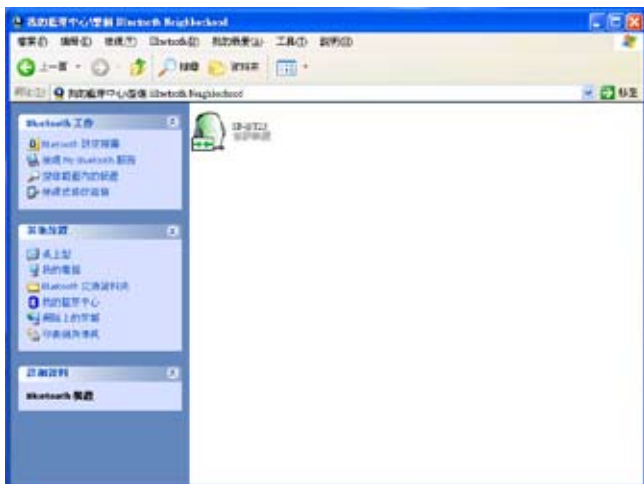
請依照以下步驟進行配對：

1. 開啟手機的藍牙功能並搜尋藍牙裝置（詳請參考您手機的使用手冊）
2. 從找到的藍牙裝置清單中，選擇 'SP-BT23'。
3. 輸入 PIN 碼 '0000' 以驗證配對。

與電腦配對

請確認您的電腦具備內建的藍牙裝置或控制器。

1. 雙按工具列中的藍牙圖示。
2. 搜尋範圍內可用的藍牙裝置。
3. 從可用藍牙裝置清單中，選擇 'SP-BT23'。當系統提示時，輸入 PIN 碼 '0000'。



設定 Windows 音效輸出

1. 在電腦中開啟控制台並雙按「聲音及音訊裝置」。
2. 選擇「音訊」標籤。
3. 在音效播放欄位，將「預設裝置」設定為「藍牙高品質音效」。
4. 點選「確定」。



當 SP-BT23 成功連線到藍牙音效裝置時，電源／連線 LED 燈會亮起。若在三分鐘內未能成功建立連線，LED 燈將閃爍，裝置即進入空間模式。必要時，請嘗試重新連線。



C. 用音源線連接裝置

若要將 SP-BT23 連線到具備 3.5mm 音效連接埠的裝置，請將音源線一端插入 SP-BT23 右側的音源輸入孔（LINE IN），另一端連接到裝置的音效連接埠。開啟裝置並播放音樂。

D. 調整音量

欲設定喇叭音量，只需旋轉喇叭右側的旋鈕即可。

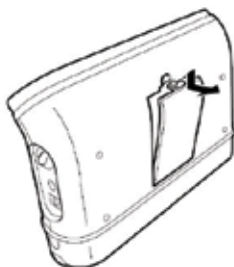
开始使用

在您开始之前，请与您的装置制造商确认您的设备是否可与华硕 SP-BT23 兼容。华硕 SP-BT23 便携式蓝牙立体声喇叭兼容蓝牙规格 1.2，可支持 A2DP (Advanced Audio Distribution Profile) 1.0。

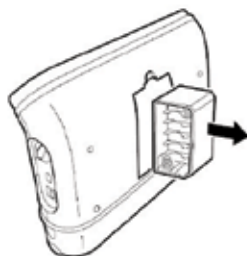
A. 为 SP-BT23 供电

1. 使用五号电池

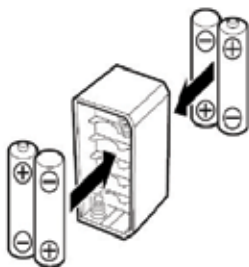
1.1 打开设备后方的电池盖。



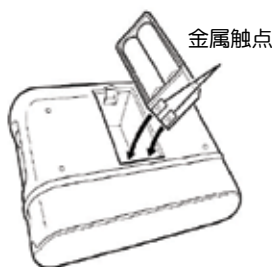
1.2 取出电池盒。



1.3 在电池盒中放入四节五号电池。请确保电池确实放好且极性正确。



1.4 将装好电池的电池盒放回电池槽。请确认金属触点已对准电池槽底部的铜制导电片。



2. 使用充电器

将电源充电器的一端插入 SP-BT23 侧面的电源插孔 (DC IN)，另一端连接到电源插座。

B. 将 SP-BT23 与蓝牙设备配对

在配对 SP-BT23 之前，找到设备右侧的旋钮，并按顺时针方向旋转，直到设备上的 LED 指示灯呈蓝色闪烁。

与蓝牙手机配对

您的 SP-BT23 可与支持 A2DP 蓝牙立体声的手机配对。

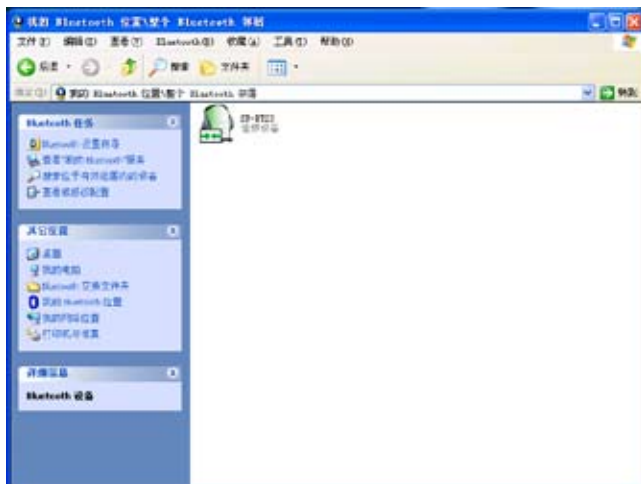
请依照以下步骤进行配对：

1. 开启手机的蓝牙功能并搜索蓝牙设备（详情请参考您手机的用户手册）
2. 从找到的蓝牙设备列表中，选择 ‘SP-BT23’ 。
3. 输入 PIN 码 ‘0000’ 以验证配对。

与电脑配对

请确认您的电脑具备内置的蓝牙设备或控制器。

1. 双击任务栏中的蓝牙图标。
2. 搜索有效范围内可用的蓝牙设备。
3. 从可用蓝牙设备列表中，选择 ‘SP-BT23’。当系统提示时，输入 PIN 码 ‘0000’。



设定 Windows 音频输出

1. 在电脑中开启控制面板并双击「声音和音频设备」。
2. 选择「音频」标签。
3. 在声音播放栏位，将「默认设备」设置为「蓝牙高质量音频」。
4. 点击「确定」。



当 SP-BT23 成功连接到蓝牙音频设备时，电源/连接 LED 灯会亮起。若在三分钟内未能成功建立连接，LED 灯将闪烁，设备即进入空闲模式。必要时，请尝试重新连接。



C. 用音源线连接设备

若要将 SP-BT23 连接到具备 3.5mm 音频接口的设备，请将音源线一端插入 SP-BT23 右侧的音源输入孔（LINE IN），另一端连接到设备的音频接口。开启设备并播放音乐。

D. 调整音量

若要设置喇叭音量，只需旋转喇叭侧面的旋钮即可。