



**USB-BT211**

**Mini USB Bluetooth Adapter**

**User Manual**

*For Windows® Vista OS*

E4945

First Edition

July 2009

**Copyright © 2009 ASUSTeK Computer Inc. All Rights Reserved.**

No part of this manual, including the products and software described in it, may be reproduced, transmitted, transcribed, stored in a retrieval system, or translated into any language in any form or by any means, except documentation kept by the purchaser for backup purposes, without the express written permission of ASUSTeK Computer Inc. ("ASUS").

Product warranty or service will not be extended if: (1) the product is repaired, modified or altered, unless such repair, modification or alteration is authorized in writing by ASUS; or (2) the serial number of the product is defaced or missing.

ASUS PROVIDES THIS MANUAL "AS IS" WITHOUT WARRANTY OF ANY KIND, EITHER EXPRESS OR IMPLIED, INCLUDING BUT NOT LIMITED TO THE IMPLIED WARRANTIES OR CONDITIONS OF MERCHANTABILITY OR FITNESS FOR A PARTICULAR PURPOSE. IN NO EVENT SHALL ASUS, ITS DIRECTORS, OFFICERS, EMPLOYEES OR AGENTS BE LIABLE FOR ANY INDIRECT, SPECIAL, INCIDENTAL, OR CONSEQUENTIAL DAMAGES (INCLUDING DAMAGES FOR LOSS OF PROFITS, LOSS OF BUSINESS, LOSS OF USE OR DATA, INTERRUPTION OF BUSINESS AND THE LIKE), EVEN IF ASUS HAS BEEN ADVISED OF THE POSSIBILITY OF SUCH DAMAGES ARISING FROM ANY DEFECT OR ERROR IN THIS MANUAL OR PRODUCT.

SPECIFICATIONS AND INFORMATION CONTAINED IN THIS MANUAL ARE FURNISHED FOR INFORMATIONAL USE ONLY, AND ARE SUBJECT TO CHANGE AT ANY TIME WITHOUT NOTICE, AND SHOULD NOT BE CONSTRUED AS A COMMITMENT BY ASUS. ASUS ASSUMES NO RESPONSIBILITY OR LIABILITY FOR ANY ERRORS OR INACCURACIES THAT MAY APPEAR IN THIS MANUAL, INCLUDING THE PRODUCTS AND SOFTWARE DESCRIBED IN IT.

Products and corporate names appearing in this manual may or may not be registered trademarks or copyrights of their respective companies, and are used only for identification or explanation and to the owners' benefit, without intent to infringe.

# Table of contents

<b>About this guide .....</b>	<b>v</b>
How this guide is organized .....	v
Conventions used in this guide .....	v
 <b>Chapter 1:      Knowing your USB Bluetooth adapter</b>	
Bluetooth® overview .....	1
Package contents .....	1
System requirements .....	1
USB-BT211 specifications summary .....	2
 <b>Chapter 2:      Getting started</b>	
Installing the Bluetooth Vista Suite .....	3
Launching the Bluetooth Vista Suite .....	6
The Bluetooth Devices dialog box.....	6
The Bluetooth menu.....	7
 <b>Chapter 3:      Pairing with a Bluetooth device</b>	
Pairing your computer with a Bluetooth device .....	11
 <b>Chapter 4:      Sending and receiving files</b>	
Launching the Bluetooth File Transfer Wizard .....	15
Sending a file to a Bluetooth device .....	15
Receiving a file from a Bluetooth device.....	19
 <b>Chapter 5:      Joining a Bluetooth Personal Area Network (PAN)</b>	
Bluetooth PAN overview .....	22
Connecting to a Bluetooth PAN .....	23

# Table of contents

## Chapter 6: Managing Bluetooth devices

Configuring your computer .....	24
Configuring the remote Bluetooth device .....	27
Connecting to a Bluetooth device using various Bluetooth services .....	28
Using the FTP service .....	28
Using the BIP service .....	30
Using the BPP service .....	31
Using the Sync service.....	32

## Chapter 7: Appendices

Notices.....	33
ASUS Contact information.....	35

# About this guide

This user guide contains information that you need to install and configure the ASUS USB Bluetooth adapter.

## How this guide is organized

This guide contains the following parts:

- **Chapter 1: Knowing your USB Bluetooth adapter**  
This chapter provides information on the package contents, system requirements, and specifications of the ASUS USB Bluetooth adapter.
- **Chapter 2: Getting started**  
This chapter describes how to install and launch the Bluetooth Vista Suite.
- **Chapter 3: Pairing with a Bluetooth device**  
This chapter describes how to pair your computer with another Bluetooth device.
- **Chapter 4: Sending and receiving files**  
This chapter describes how to transfer files between your computer and another Bluetooth device.
- **Chapter 5: Joining a Bluetooth Personal Area Network (PAN)**  
This chapter describes how to connect your computer to a Bluetooth Personal Area Network (PAN).
- **Chapter 6: Managing Bluetooth devices**  
This chapter describes how to manage your Bluetooth devices.
- **Chapter 7: Appendices**  
This chapter provides you with the regulatory Notices and Safety Statements.

## Conventions used in this guide



**WARNING:** Information to prevent injury to yourself when trying to complete a task.



**CAUTION:** Information to prevent damage to the components when trying to complete a task.



**IMPORTANT:** Instructions that you **MUST** follow to complete a task.



**NOTE:** Tips and additional information to aid in completing a task.

# 1 Knowing your USB Bluetooth adapter

## Bluetooth® overview

Bluetooth® is a short-range wireless technology that allows communication among Bluetooth-enabled devices such as PCs, mobile devices, headsets, and GPS receivers. Bluetooth® devices only need to be within the specified range to exchange information and do not need any physical connection.

With Bluetooth® technology, you can:

- Connect your computer to the Internet using a Bluetooth-enabled mobile phone.
- Connect your computer to other Bluetooth devices that are within range.
- Synchronize data between your computer and Bluetooth-enabled mobile phone.
- Use a wireless mouse, keyboard, or game controller on your computer.

## Package contents

Check your ASUS USB Bluetooth adapter package for the following items.

- ☒ ASUS USB-BT211
- ☒ Support CD (manual, utilities)
- ☒ Quick Start Guide



---

If any of the items is damaged or missing, contact your retailer.

---

## System requirements

Before using your ASUS USB Bluetooth adapter, ensure that your system meets the following requirements:

**Operating system:** Microsoft® Windows® XP / Vista

**System memory:** 64MB or larger

**Hard drive free space:** 100MB

## USB-BT211 specifications summary

<b>Model</b>	USB-BT211
<b>Standard</b>	Bluetooth v2.1 + EDR
<b>Interface</b>	USB 2.0/1.1
<b>Range</b>	Up to 100 meters
<b>Bluetooth Profile</b>	A2DP, AVRCP, BIP, DUNP, FAX, FTP, HCRP, HID, GAP, OPP, PAN, SPP, SYNC, HSP, HFP, BPP, SAP
<b>Frequency Band</b>	2.400 ~ 2.4835GHz unlicensed ISM band
<b>Modulation Method</b>	GFSK for 1Mbps, $\pi/4$ -DQPSK for 2Mbps, 8-DPSK for 3Mbps
<b>Spread Spectrum</b>	FHSS (Frequency Hopping Spread Spectrum)
<b>Transfer Rate (Maz)</b>	Max UARTbaud rates of 3Mbps
<b>OS support</b>	Windows® XP / Vista
<b>Power Consumption</b>	Tx Typical: 51mA, Rx Typical: 43mA, Standby Mode: 15mA
<b>Input Power</b>	DC 5V via USB port
<b>Receiving Sensitivity</b>	<-85dBm at <0.1% BER
<b>Physical Dimensions</b>	19.52 x 13.5 x 6.8 mm (L x W x H)
<b>Weight</b>	2.2g
<b>Operating Temperature</b>	0°C ~ 60°C (32°F ~ 140°F)
<b>Storage Temperature</b>	-10°C ~ 70°C (14°F ~ 158°F)
<b>Humidity</b>	5% ~ 90%, non-condensing

*\*Specifications are subject to change without notice.*

# 2 Getting started

## Installing the Bluetooth Vista Suite

The Bluetooth Vista Suite is a Bluetooth management tool that helps you find, pair, and communicate with other Bluetooth devices easily.



- Uninstall any previously installed Bluetooth software on your computer.

Click **Start > Control Panel > Programs > Programs and Features > Uninstall a program** to uninstall Bluetooth software.

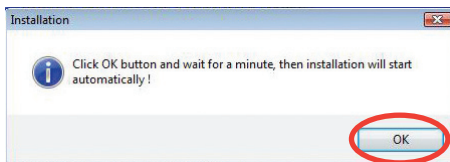
- Install the Windows® Vista Service Pack 1 or later versions.
- Install the Bluetooth Vista Suite before inserting the USB Bluetooth adapter.

### To install the Bluetooth Vista Suite on your computer:

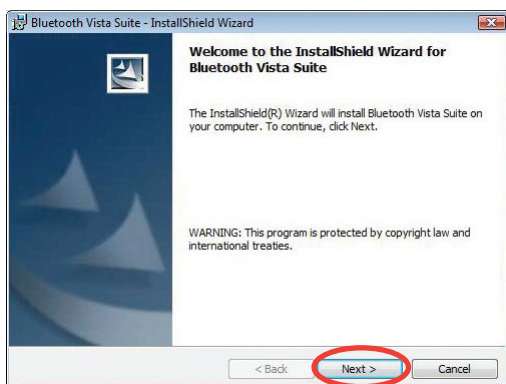
1. Place the Support CD into the optical drive.
2. Click **Allow** on the User Account Control screen.
3. Select your language and click **Install Bluetooth Utilities/Driver**.



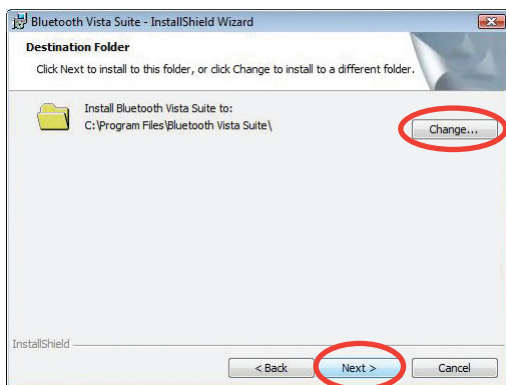
4. Click **OK**.



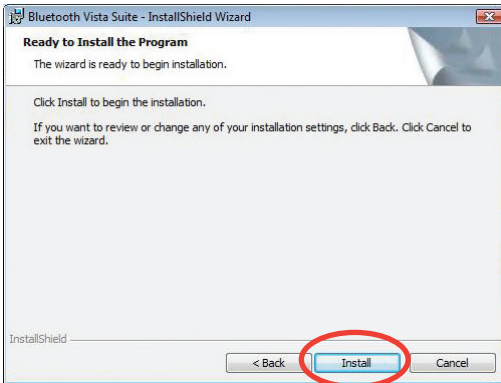
5. The InstallShield Wizard for Bluetooth Vista Suite launches. Click **Next** to continue.



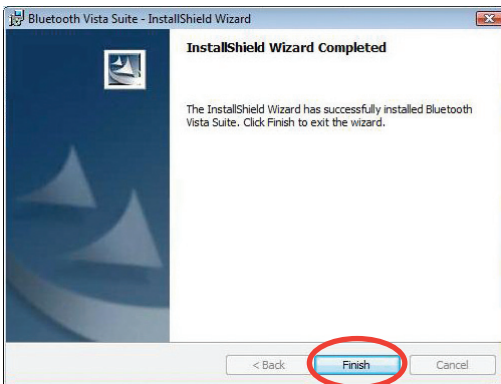
6. Click **Next** to install the Bluetooth Vista Suite to the default folder or click **Change** to specify another folder.



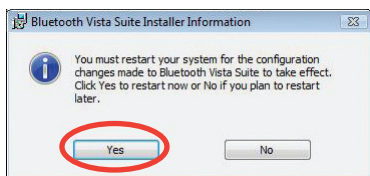
7. Click **Install** to start the installation.



8. Click **Finish** to exit the installation wizard.



9. Click **Yes** to restart your computer and activate the changes.



10. Insert the USB Bluetooth adapter after your computer reboots, then the computer detects the USB Bluetooth adapter and completes installing the Bluetooth profile drivers.

## Launching the Bluetooth Vista Suite

The Bluetooth Vista Suite allows you to manage your Bluetooth devices using the Bluetooth Devices dialog box and the Bluetooth menu.

### The Bluetooth Devices dialog box

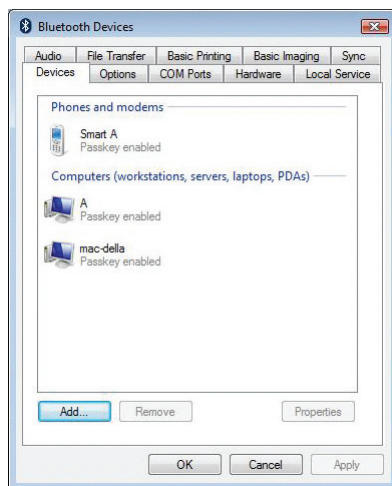
The Bluetooth Devices dialog box allows you to manage your Bluetooth devices and use various Bluetooth services.

**To launch the Bluetooth Devices dialog box:**

- Click **Start > All Programs > ASUS Bluetooth Suite > Bluetooth Devices**.
- Click **Start > Control Panel > Hardware and Sound > Bluetooth Devices**.




Refer to **Chapter 6: Managing Bluetooth devices** for details on how to manage your Bluetooth devices using this dialog box.

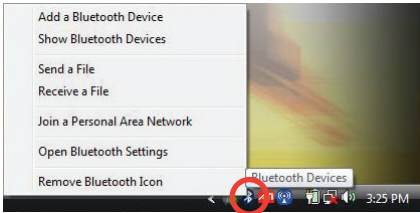


# The Bluetooth menu

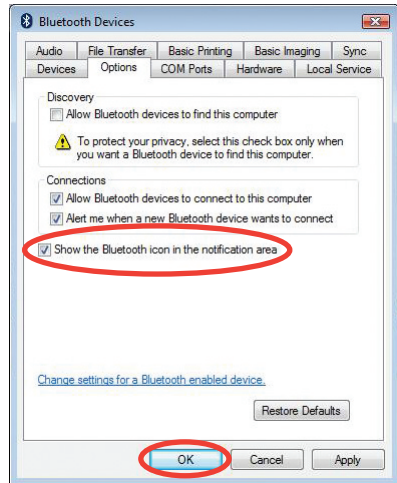
The Bluetooth menu provides shortcuts to performing common Bluetooth operations such as device pairing, file transfer, and Personal Area Network (PAN) connection.

## To use the Bluetooth menu:

1. Right-click the Bluetooth icon  in the notification area.
2. Select the operation that you want to perform.



By default, the Bluetooth icon is not loaded in the notification area. To show this icon in the notification area, check **Show the Bluetooth icon in the notification area** on the Options page of the Bluetooth Devices dialog box.



Refer to the succeeding sections on the descriptions for the items on the Bluetooth menu.

## Add a Bluetooth Device

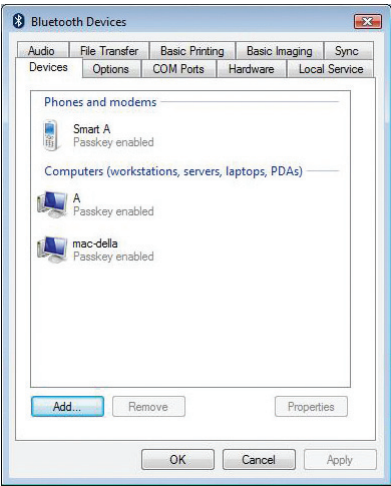
This item launches the **Add Bluetooth Device Wizard** that guides you in pairing your computer with another Bluetooth device.



- You may also click **Add** on the Devices page of the Bluetooth Devices dialog box to launch the **Add Bluetooth Device Wizard**.
- Refer to **Chapter 3: Pairing with a Bluetooth device** for details on how to pair your computer with another Bluetooth device using this wizard.

# Show Bluetooth Devices

This item displays the Bluetooth devices that your computer has paired with.



## Send a File / Receive a File

This item launches the **Bluetooth File Transfer Wizard** that guides you in transferring a file between your computer and another Bluetooth device such as a mobile phone or another computer.



- You may also click **Start > All Programs > Accessories > Bluetooth File Transfer Wizard** to launch the **Bluetooth File Transfer Wizard**.
- Refer to **Chapter 4: Sending and receiving files** for details on how to transfer a file between your computer and another Bluetooth device using this wizard.

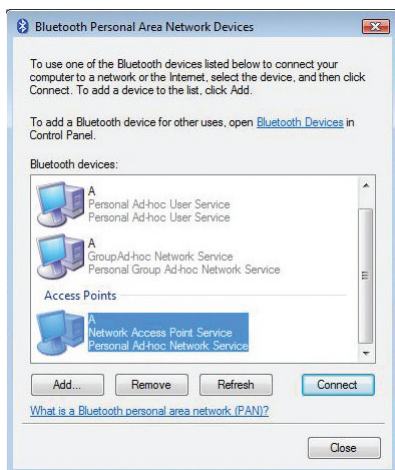


## Join a Personal Area Network

This item launches the **Bluetooth Personal Area Network Devices** screen and connects your computer to a Bluetooth Personal Area Network (PAN).



Refer to **Chapter 5: Joining a Bluetooth Personal Area Network (PAN)** for details about Bluetooth PAN.



## Open Bluetooth Settings

This item launches the **Bluetooth Devices** dialog box that allows you to manage your Bluetooth devices and use various Bluetooth services.

## Remove Bluetooth Icon

This item removes the Bluetooth icon from the notification area.

# Pairing with a Bluetooth device


## Pairing your computer with a Bluetooth device

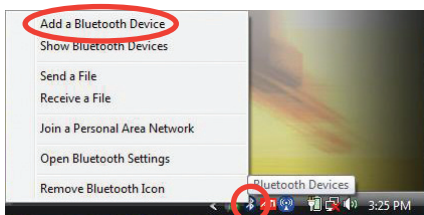
Use the **Add Bluetooth Device Wizard** to pair your computer with another Bluetooth device.



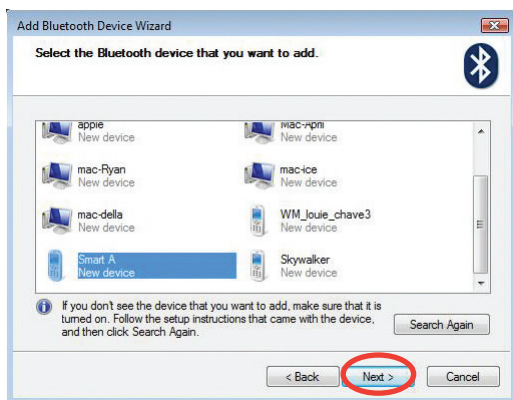
- Before transferring data between your computer and another Bluetooth device, pair your computer with the Bluetooth device.
- Before pairing with a Bluetooth device, ensure that the Bluetooth device is turned on and discoverable. Refer to the documentation that came with the Bluetooth device for instructions on how to make it discoverable.

### To pair your computer with a Bluetooth device:

1. Insert the USB Bluetooth adapter into your computer's USB port.
2. Right-click the Bluetooth icon  in the notification area, then click **Add a Bluetooth Device**.



4. Select the Bluetooth device that you want to pair with, then click **Next**.



To secure your data, pair with Bluetooth devices that you trust only.

3. The Add Bluetooth Device Wizard launches. Ensure that the Bluetooth device that you want to pair with is turned on and discoverable, then check **My device is set up and ready to be found**. Click **Next** to continue.



5. Use a passkey to pair with your Bluetooth device. Select one of the following options, then click **Next**.

### **Choose a passkey for me**

Select this option if the documentation that came with the Bluetooth device you want to add does not specify a passkey and you want the Add Bluetooth Device Wizard to generate a passkey for you.

### **Use the passkey found in the documentation**

Select this option if the documentation that came with the Bluetooth device you want to add specifies a passkey.

### **Let me choose my own passkey**

Select this option if the documentation that came with the Bluetooth device you want to add does not specify a passkey and you want to create your own passkey.



We recommend that you create a passkey that contains 8 to 16 digits.

### **Don't use a passkey**

Select this option only if the Bluetooth device you want to add does not support a passkey.

Add Bluetooth Device Wizard

Do you need a passkey to add your device?

To answer this question, refer to the "Bluetooth" section of the documentation that came with your device. If the documentation specifies a passkey, use that one.

☐ Choose a passkey for me

☐ Use the passkey found in the documentation:

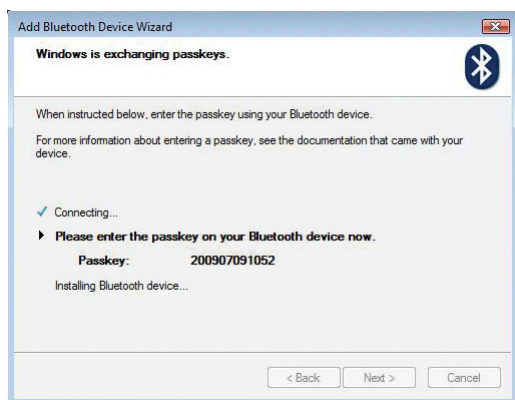
☒ Let me choose my own passkey: 200907091052

☐ Don't use a passkey

You should always use a passkey, unless your device does not support one. We recommend using a passkey that is 8 to 16 digits long. The longer the passkey, the more secure it will be.

< Back Next > Cancel

6. Enter the passkey on the Bluetooth device that you want to pair with.



7. The pairing relationship between your computer and the Bluetooth device is established. Click **Finish** to exit the wizard.



# Sending and receiving files

## Launching the Bluetooth File Transfer Wizard

Use the **Bluetooth File Transfer Wizard** to transfer files, one at a time, between your computer and another Bluetooth device, such as a mobile phone or another computer.

**To launch the Bluetooth File Transfer Wizard:**

- Right-click the Bluetooth icon  in the notification area, then select **Send a File** or **Receive a File**.
- Click **Start > All Programs > Accessories > Bluetooth File Transfer Wizard**.



The Bluetooth File Transfer Wizard uses the OBEX Bluetooth Object Push Profile (OPP).

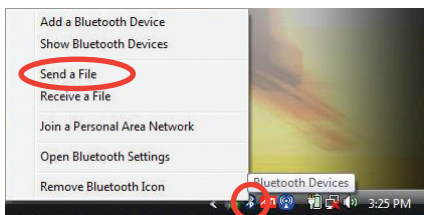
## Sending a file to a Bluetooth device



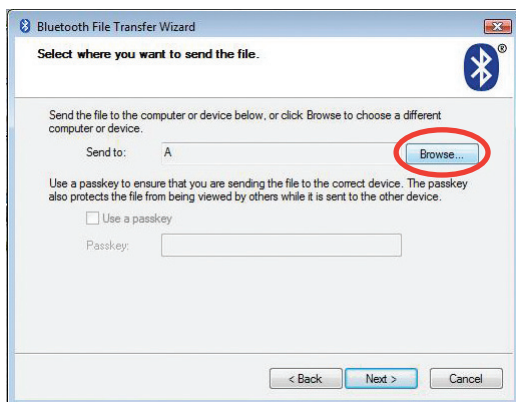
Before transferring data between your computer and another Bluetooth device, pair your computer with the Bluetooth device. Refer to **Chapter 3: Pairing with a Bluetooth device** for details on how to pair your computer with another Bluetooth device.

**To send a file to a Bluetooth device:**

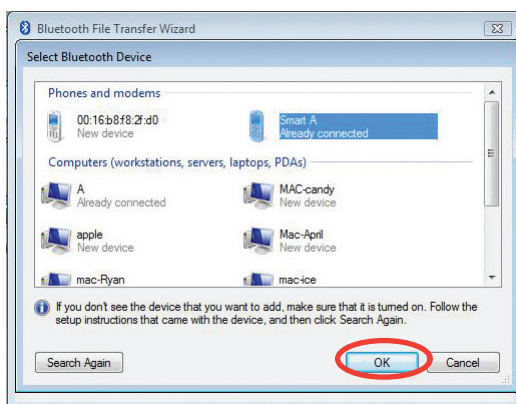
1. Right-click the Bluetooth icon  in the notification area, then select **Send a File**.



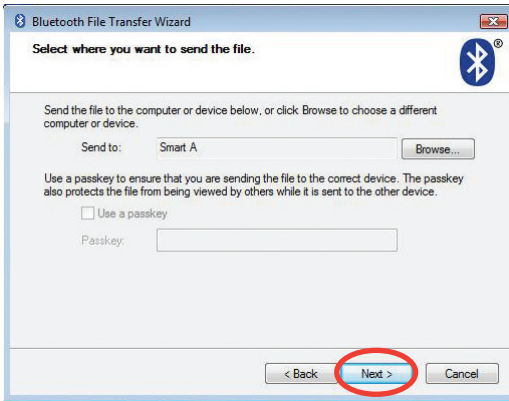
2. The Bluetooth File Transfer Wizard launches. Click **Browse**.



3. Select the Bluetooth device to which you want to send the file, then click **OK**.

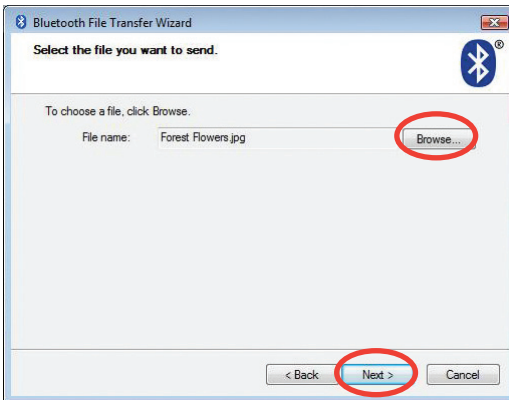


4. Click **Next**.

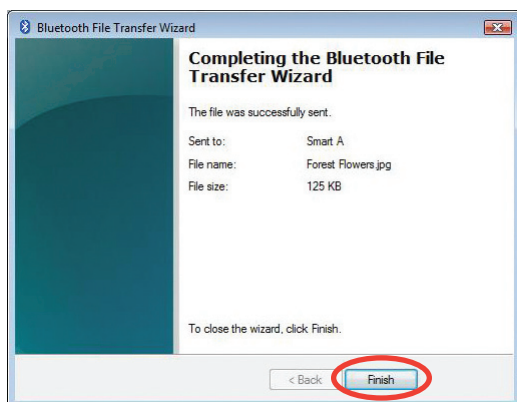


In this setup case, the Bluetooth device has already been added to your computer. If the Bluetooth device has not been added to your computer, check **Use a passkey** to pair with the Bluetooth device and ensure that you are sending the file to the correct device.

5. Click **Browse** to select the file that you want to send, then click **Next**.



6. Wait until the file is sent to the Bluetooth device successfully. Click **Finish** to exit the wizard.




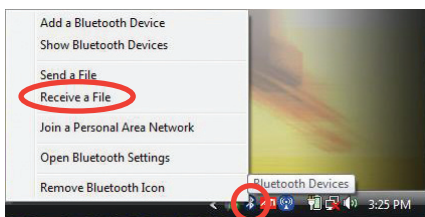
# Receiving a file from a Bluetooth device



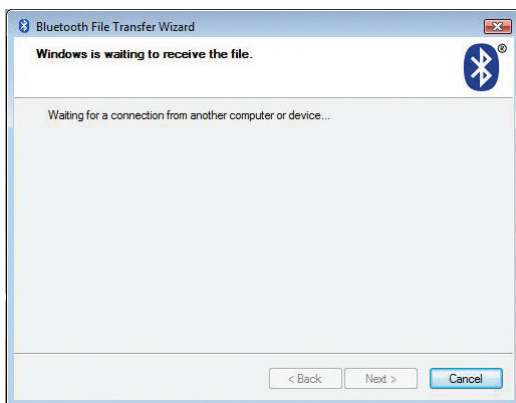
Before transferring data between your computer and another Bluetooth device, pair your computer with the Bluetooth device. Refer to **Chapter 3: Pairing with a Bluetooth device** for details on how to pair your computer with another Bluetooth device.

## To receive a file from a Bluetooth device:

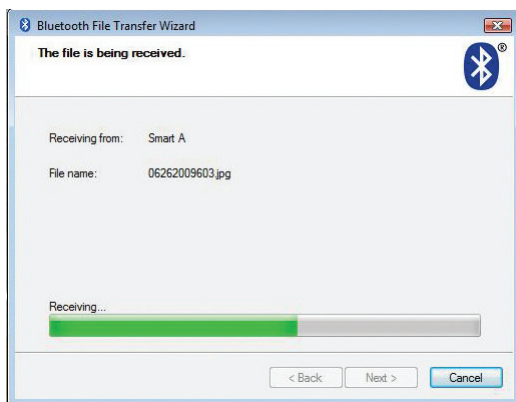
1. Right-click the Bluetooth icon  in the notification area, then select **Receive a File**.



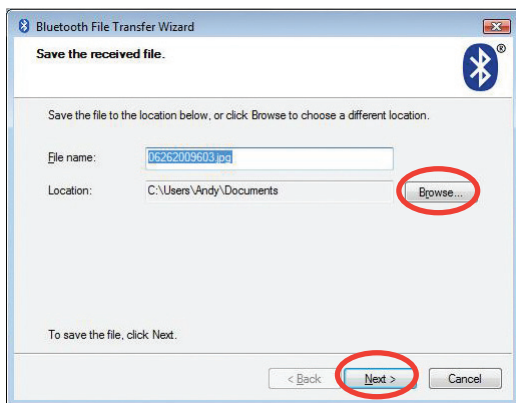
2. Wait for the other Bluetooth device to initiate a file transfer.



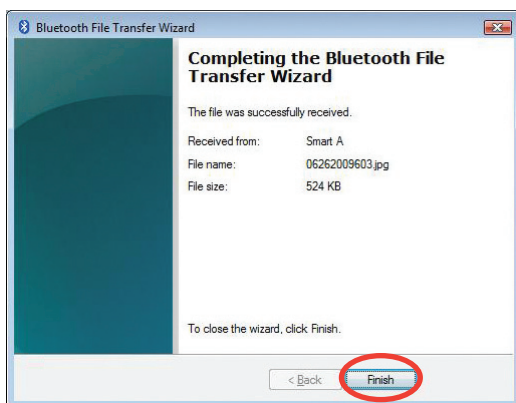
3. Wait until your computer has successfully received the file.



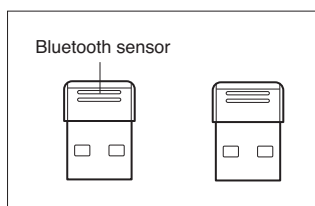
4. Click **Browse** to select a location where you want to save the file, then click **Next**.



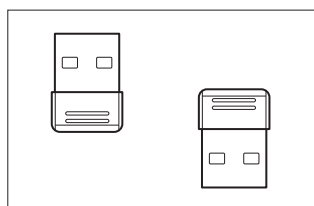
5. The file transfer is completed. Click **Finish** to exit the wizard.



To achieve the best signal quality when transferring data between two computers using two USB-BT211 USB Bluetooth adapters, we suggest that the Bluetooth sensors be placed in either Position 1 or Position 2:



Position 1



Position 2

# 5 Joining a Bluetooth Personal Area Network (PAN)

## Bluetooth PAN overview

A Bluetooth Personal Area Network (PAN) is a wireless computer network that typically consists of Bluetooth enabled mobile computers, mobile phones, and handheld devices.

Connecting to a Bluetooth PAN automatically creates a TCP/IP connection between your computer and Bluetooth enabled mobile phones, handheld devices, or other computers. You can transfer files between your computer and other devices in a Bluetooth PAN.

You can connect to the following types of Bluetooth enabled devices that work with PAN:

- **Personal Area Network User (PANU) devices**

Connecting to a Bluetooth enabled PANU device creates an ad hoc network that includes your computer and the PANU device. An ad hoc network is a temporary network used for sharing files or an Internet connection. In an ad hoc network, computers and devices are connected directly to each other instead of to a hub or router. It is also known as a computer-to-computer network.

- **Group ad hoc Network (GN) devices**

Connecting to a Bluetooth enabled GN device creates an ad hoc network that includes your computer, the GN device, and any other PANU devices that are connecting to the same GN device.

- **Network Access Point (NAP) devices**

Connecting to a Bluetooth enabled NAP device enables you to connect your computer to a larger network such as a home network, a corporate network, or the Internet.



---

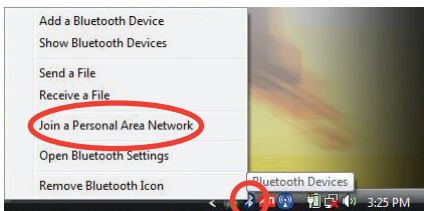
Some mobile phones and handheld devices only work with dial-up networking, some only work with PAN, and some work with both services. To find out which services are supported by your Bluetooth enabled device, refer to the documentation that came with your device.

---

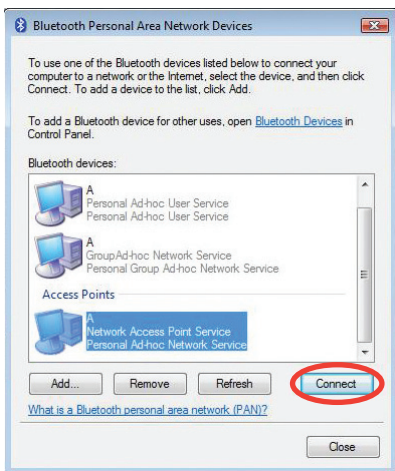
# Connecting to a Bluetooth PAN

To connect to a Bluetooth PAN:

1. Right-click the Bluetooth icon  in the notification area, then select **Join a Personal Area Network**.



2. A Bluetooth Personal Area Network Devices screen appears. Select the Bluetooth PAN that you want to connect to, then click **Connect**.





- Only the paired devices that support PAN are listed on the Bluetooth Personal Area Network Devices screen.
- To add other devices that support PAN to the list, click **Add** and follow the Add Bluetooth Device Wizard steps. In this setup, the Add Bluetooth Device Wizard searches for devices that support PAN only.

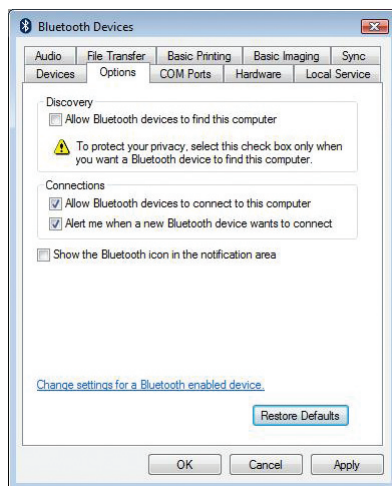
# 6 Managing Bluetooth devices

You can use the Bluetooth Devices dialog box to manage your Bluetooth devices.

## Configuring your computer

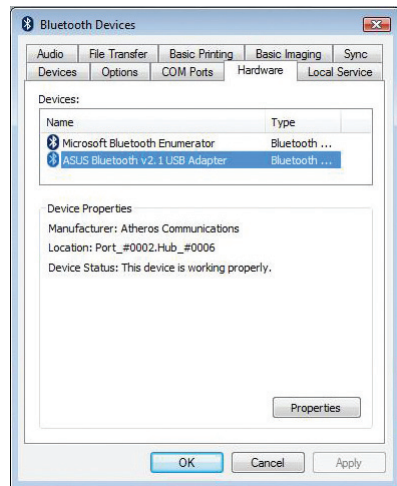
To configure your computer's Bluetooth settings:

1. In the Bluetooth Devices dialog box, click the **Options** tab.
  2. Do any of the following:
    - Check **Allow Bluetooth devices to find this computer** to make your computer discoverable to other Bluetooth devices.
- 
-  To protect your computer, check this item only when you want a Bluetooth device to find your computer.
- 
- Check **Allow Bluetooth devices to connect to this computer** to allow other Bluetooth devices to connect to your computer.
  - Check **Alert me when a new Bluetooth device wants to connect** to allow the Bluetooth Vista Suite to prompt you when a new Bluetooth device wants to connect to your computer.
  - Check **Show the Bluetooth icon in the notification area** to display the Bluetooth icon  in the notification area.
  - Click **Restore Defaults** to restore the default settings on the **Options** page.
3. Click **OK** to save the changes.



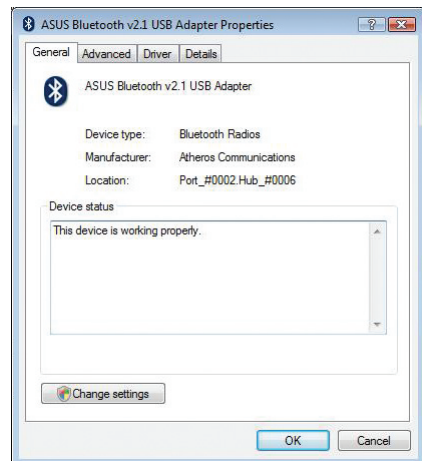
## To configure your computer's hardware settings:

1. In the Bluetooth Devices dialog box, click the **Hardware** tab.
2. Select a device, then click **Properties** to view detailed information about the device including the device status, driver information, and radio information.



3. Click **Change settings**, then do any of the following:

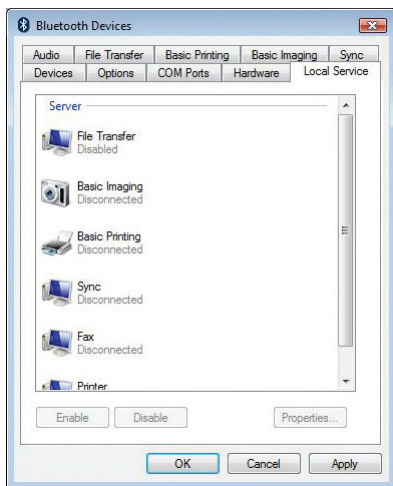
- Create a new name for your computer.
- Disable the device.
- Update or uninstall the device driver.
- Roll back to the previously installed driver if the device fails after you update the driver.
- Change the power management settings.



4. Click **OK** to save the changes.

### To configure the local device services:

1. In the Bluetooth Devices dialog box, click the **Local Service** tab. This page displays the Bluetooth services that your computer supports.
2. Do any of the following:
  - Select a service, then enable or disable the service.
  - Select a service, then click **Properties** to view or change the settings for the service.

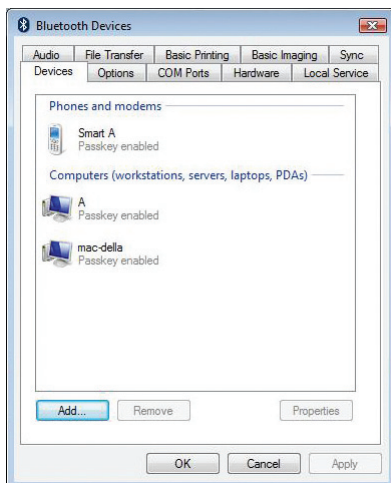


3. Click **OK** to save the changes.

# Configuring the remote Bluetooth device

To configure the remote Bluetooth device:

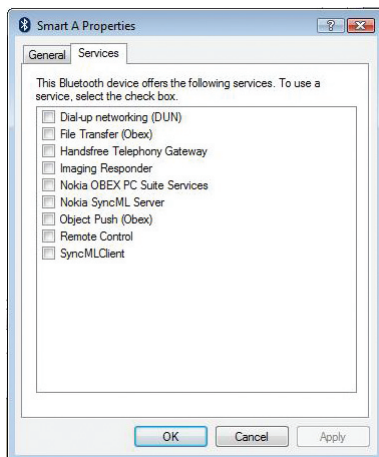
1. In the Bluetooth Devices dialog box, click the **Devices** tab. This page displays the Bluetooth devices that your computer has paired with.



2. Do any of the following:

- Click **Add** to add a Bluetooth device to your computer.
- Select a device, then click **Remove** to remove it from your computer.
- Select a device, then click **Properties** to view or change the settings for the device.

3. Click **OK** to save the changes.



# Connecting to a Bluetooth device using various Bluetooth services

Connect your computer to a remote Bluetooth device using various Bluetooth services such as FTP, BIP, BPP, and Sync services.

## Using the FTP service

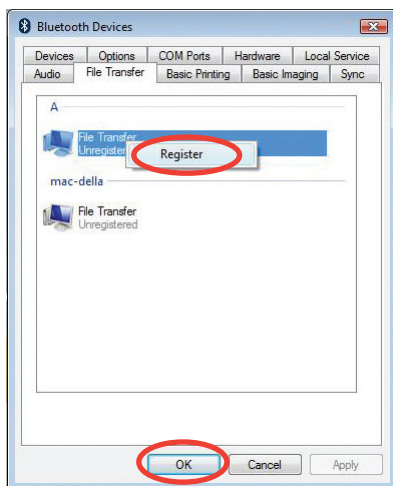
The File Transfer Profile (FTP) service enables you to browse the shared folder on an FTP-enabled Bluetooth device that is within range of your computer. You can also transfer files and folders between your computer and the shared folder.



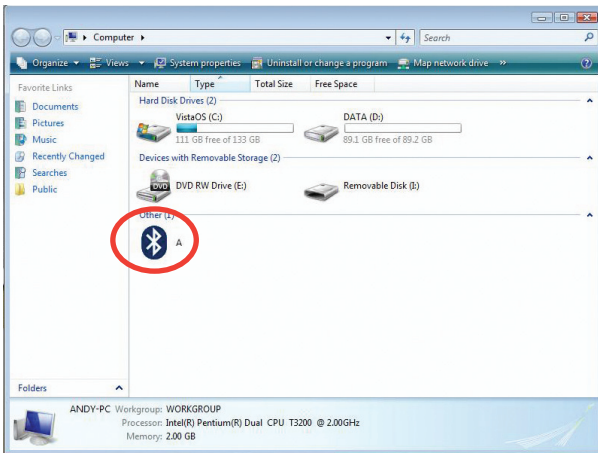
- You can only connect to one Bluetooth device via the FTP service at a time.
- To specify a shared folder for your computer, click the **Local Service** tab in the Bluetooth Devices dialog box, select **File Transfer**, and click **Properties**.

### To use the FTP service:

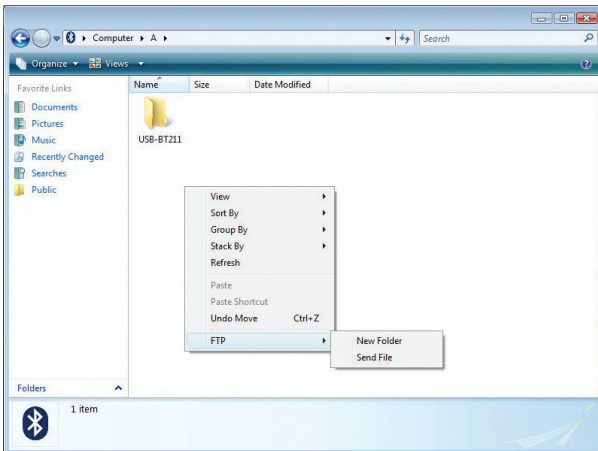
1. In the Bluetooth Devices dialog box, click the **File Transfer** tab. This page displays the paired Bluetooth devices that supports the FTP service.
2. Right-click the Bluetooth device that you want to connect to, then select **Register**.
3. Click **OK** to save the changes.



4. Double-click **Computer** on the Windows® desktop. You can find the connected Bluetooth device in the **Other** category.



5. Double-click the Bluetooth device to browse its shared folder. You can also transfer files and folders between your computer and the shared folder.



# Using the BIP service

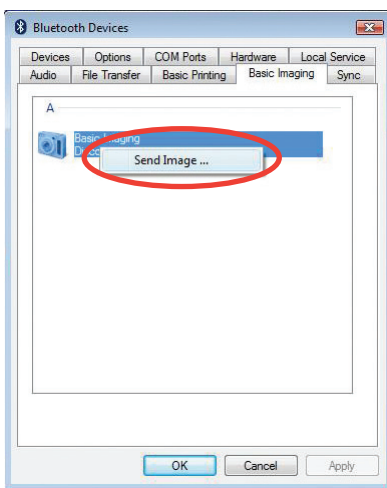
Use the Basic Imaging Profile (BIP) service to transfer images between your computer and another Bluetooth device.



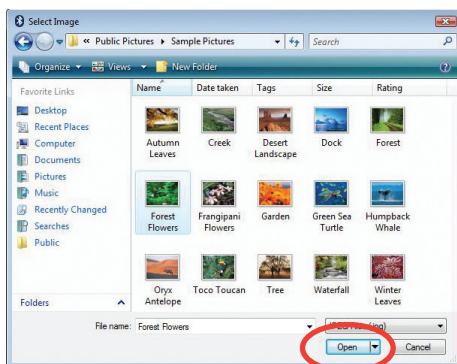
- The images that other Bluetooth devices send to your computer via the BIP service are saved in the BIP folder on your computer.
- To specify a BIP folder for your computer, click the **Local Service** tab in the Bluetooth Devices dialog box, select **Basic Imaging**, and click **Properties**.

## To use the BIP service:

1. In the Bluetooth Devices dialog box, click the **Basic Imaging** tab. This page displays the paired Bluetooth devices that supports the BIP service.
2. Right-click the Bluetooth device to which you want to send the image, then select **Send Image**.



3. Select the image that you want to send and click **Open**. The Bluetooth Vista Suite starts to send the image to the remote Bluetooth device.

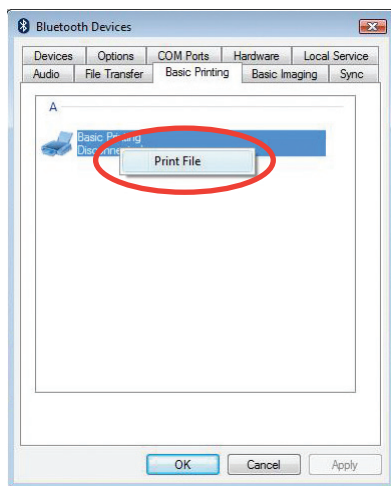


## Using the BPP service

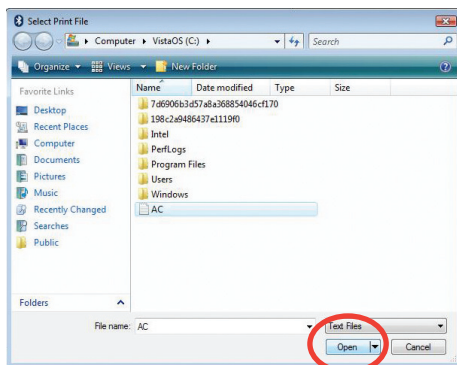
Use the Basic Printing Profile (BPP) service to print simple files such as txt (.txt) and XHTML files through a remote Bluetooth device that is connected to a physical printer.

### To use the BPP service:

1. In the Bluetooth Devices dialog box, click the **Basic Printing** tab. This page displays the paired Bluetooth devices that supports the BPP service.
2. Right-click the Bluetooth device that you want to connect to, then select **Print File**.



3. Select the file that you want to print and click **Open**. The remote Bluetooth device starts to print the selected file.



## Using the Sync service

Use the Sync service to synchronize vCards and vCalendars with a remote Bluetooth device.

There are two roles involved in synchronization: client and server. The client is the device requesting or initiating the synchronization. The server is the device that the client is synchronizing with.

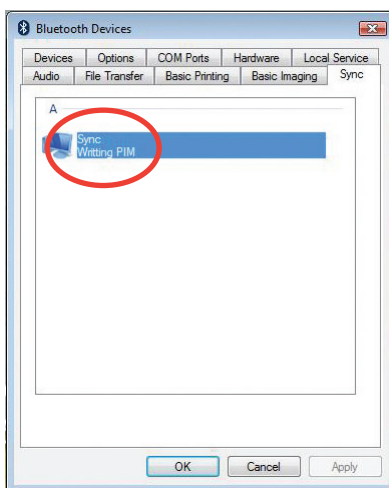
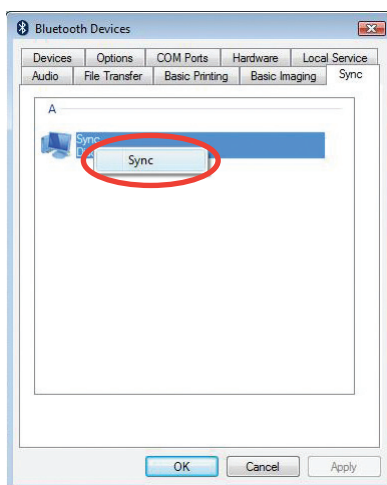
The client can synchronize contacts, appointments, messages, and notes with the server.



To configure the settings for the Sync service, click the **Local Service** tab in the Bluetooth Devices dialog box, select **Sync**, and click **Properties**.

### To use the Sync service:

1. In the Bluetooth Devices dialog box, click the **Sync** tab. This page displays the paired Bluetooth devices that supports the Sync service.
2. Right-click the Bluetooth device that you want to synchronize with and select **Sync**. The Bluetooth Vista Suite starts to synchronize with the remote Bluetooth device. When the synchronization is completed, the status shows **Disconnected**.



## Notices

### Federal Communications Commission Statement

This device complies with Part 15 of the FCC Rules. Operation is subject to the following two conditions:

- This device may not cause harmful interference.
- This device must accept any interference received including interference that may cause undesired operation.

This equipment has been tested and found to comply with the limits for a class B digital device, pursuant to part 15 of the FCC Rules. These limits are designed to provide reasonable protection against harmful interference in a residential installation.

This equipment generates, uses and can radiate radio frequency energy and, if not installed and used in accordance with the instructions, may cause harmful interference to radio communications. However, there is no guarantee that interference will not occur in a particular installation. If this equipment does cause harmful interference to radio or television reception, which can be determined by turning the equipment off and on, the user is encouraged to try to correct the interference by one or more of the following measures:

- Reorient or relocate the receiving antenna.
- Increase the separation between the equipment and receiver.
- Connect the equipment into an outlet on a circuit different from that to which the receiver is connected.
- Consult the dealer or an experienced radio/TV technician for help.



---

Any changes or modifications not expressly approved by the party responsible for compliance could void the user's authority to operate the equipment.

---

### Prohibition of Co-location

This device and its antenna(s) must not be co-located or operating in conjunction with any other antenna or transmitter.

## Safety Information

To maintain compliance with FCC's RF exposure guidelines, this equipment should be installed and operated with minimum distance 20cm between the radiator and your body. Use on the supplied antenna.

## Declaration of Conformity for R&TTE directive 1999/5/EC

Essential requirements – Article 3

Protection requirements for health and safety – Article 3.1a

Testing for electric safety according to EN 60950-1 has been conducted. These are considered relevant and sufficient.

Protection requirements for electromagnetic compatibility – Article 3.1b

Testing for electromagnetic compatibility according to EN 301 489-1 and EN 301 489-17 has been conducted. These are considered relevant and sufficient.

Effective use of the radio spectrum – Article 3.2

Testing for radio test suites according to EN 300 328- 2 has been conducted. These are considered relevant and sufficient.

## CE Mark Warning

This is a Class B product, in a domestic environment, this product may cause radio interference, in which case the user may be required to take adequate measures.

## DGT warning

經型式認證合格之低功率射頻電機，非經許可，公司、商號或使用者均不得擅自變更頻率、加大功率或變更原設計之特性及功能。

低功率射頻電機之使用不得影響飛航安全及干擾合法通信；經發現有干擾現象時，應立即停用，並改善至無干擾時方得繼續使用。

前項合法通信，指依電信法規定作業之無線電通信。

低功率射頻電機須忍受合法通信或工業、科學及醫療用電波輻射性電機設備之干擾。

## REACH

Complying with the REACH (Registration, Evaluation, Authorisation, and Restriction of Chemicals) regulatory framework, we published the chemical substances in our products at ASUS REACH website at <http://green.asus.com/english/REACH.htm>.

# ASUS Contact information

## ASUSTeK COMPUTER INC. (Asia Pacific)

Address 15 Li-Te Road, Peitou, Taipei, Taiwan 11259  
Website [www.asus.com.tw](http://www.asus.com.tw)

### Technical Support

Telephone +886228943447  
Support Fax +886228907698  
Software download [support.asus.com](http://support.asus.com)\*

## ASUS COMPUTER INTERNATIONAL (America)

Address 800 Corporate Way, Fremont, CA 94539, USA  
Telephone +15029550883  
Fax +15029338713  
Website [usa.asus.com](http://usa.asus.com)  
Software download [support.asus.com](http://support.asus.com)\*

## ASUS COMPUTER GmbH (Germany and Austria)

Address Harkort Str. 21-23, D-40880 Ratingen, Germany  
Fax +492102959911  
Online contact [www.asus.com.de/sales](http://www.asus.com.de/sales)

### Technical Support

Telephone (Component) +491805010923  
Telephone (System/Notebook/Eee/LCD) +491805010920  
Fax +492102959911  
Online support [support.asus.com](http://support.asus.com)\*

\* Available on this site is an online Technical Inquiry Form that you can fill out to contact technical support.

<b>Manufacturer:</b>	<b>ASUSTeK Computer Inc.</b> Tel: +886-2-2894-3447 Address: No. 150, LI-TE RD., PEITOU, TAIPEI 112, TAIWAN
<b>Authorised representative in Europe:</b>	<b>ASUS Computer GmbH</b> Address: HARKORT STR. 21-23, 40880 RATINGEN, GERMANY
<b>Authorised distributors in Turkey:</b>	<b>BOGAZICI BIL GISAYAR SAN. VE TIC. A.S.</b> Tel: +90 212 3311000 Address: AYAZAGA MAH. KEMERBURGAZ CAD. NO.10 AYAZAGA/ISTANBUL
	<b>INDEX BILGISAYAR SISTEMLERI MUHENDISLIK SAN. VE TIC. A.S.</b> Tel: +90 212 3312121 Address: AYAZAGA MAH. CENDERE YOLU NO.9 AYAZAGA/ISTANBUL

EEE Yönetmeliğine Uygundur.