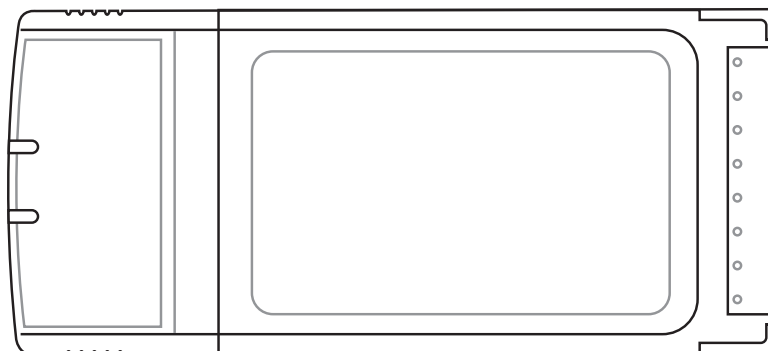




Wireless Local Area Network Card

WL-107g

(For 802.11g & 802.11b Wireless Networks)



Quick Start Guide

Quick Start Guide

System Requirements

To begin using the ASUS WLAN Card, you must have the following minimum requirements:

- Windows XP/2000/ME/98SE or Linux Redhat (Version 7.1 or later)
- Standard PCMCIA Slot Type II
- 32MB system memory or larger
- 300MHz processor or higher

Installation Procedures



Linux users: This manual is meant for Windows users. Information pertaining to Linux is located in “readme.txt” in the Linux folder. Linux drivers are also located in the same folder.



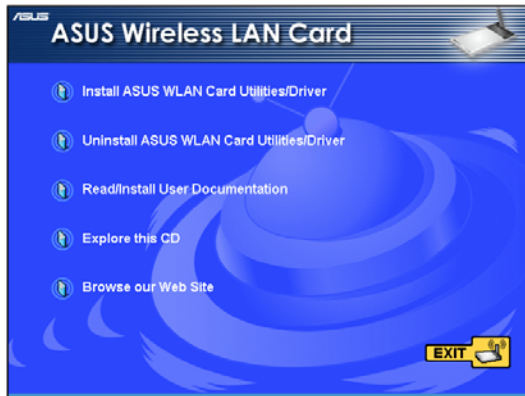
Important: Install the ASUS WLAN card utilities before inserting the ASUS WLAN Card into your computer.

Follow these instructions to setup the ASUS WLAN card.

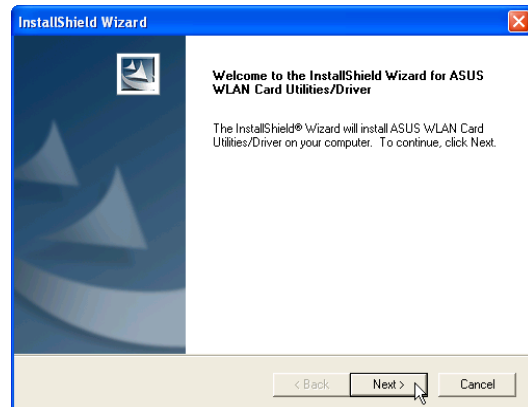
1. Install the ASUS WLAN card utilities and driver from the support CD.
2. Insert the ASUS WLAN card into your computer.

Installing the utilities and driver

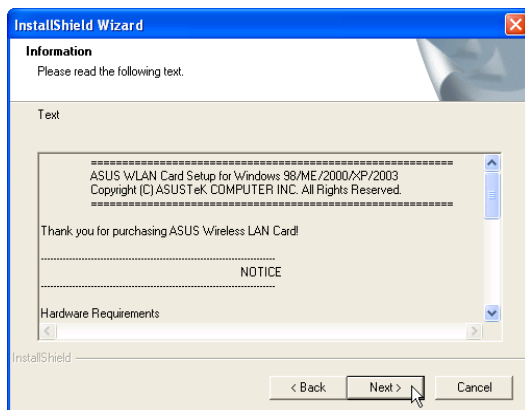
Follow these instructions to install the ASUS WLAN card utilities and driver. Insert the support CD and an autorun menu will appear. If your autorun is disabled, double click **SETUP.EXE** in the root directory of the support CD.



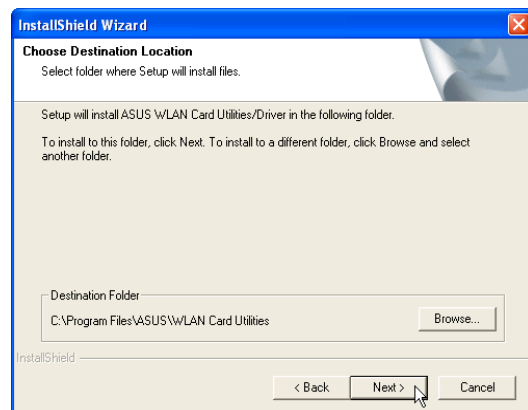
1. Select your language and click **Install ASUS WLAN Card Utilities/Driver**.



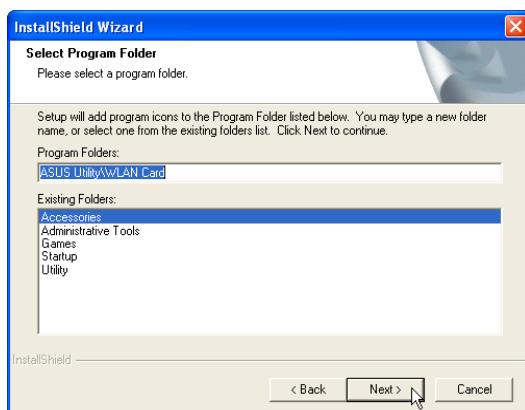
2. Click **Next** on the Welcome screen.



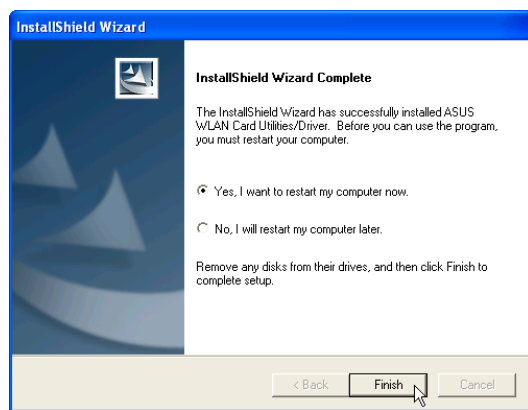
3. Click **Next** after reading the Information.



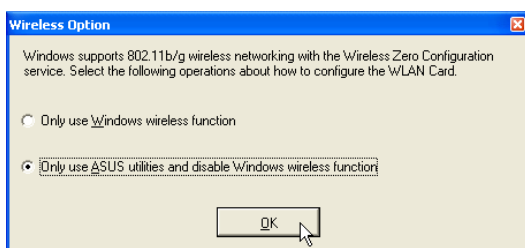
4. Click **Next** to use the default Destination Folder or click Browse to select another folder.



5. Click **Next** to place icons in the default program folder or type another folder name.



6. When Setup is complete, click **Finish** to exit the installation wizard.



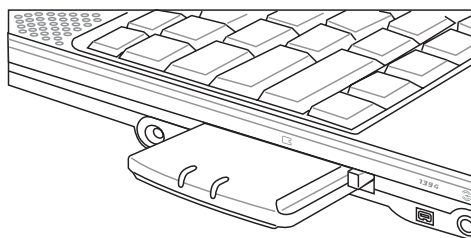
7. Windows XP users: When the program is launched for the first time, you will be asked which function to use. Select to use ASUS utilities for more functions.

Quick Start Guide

Inserting the ASUS WLAN card

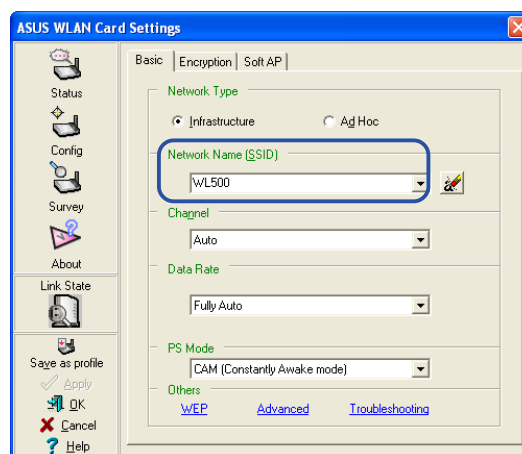
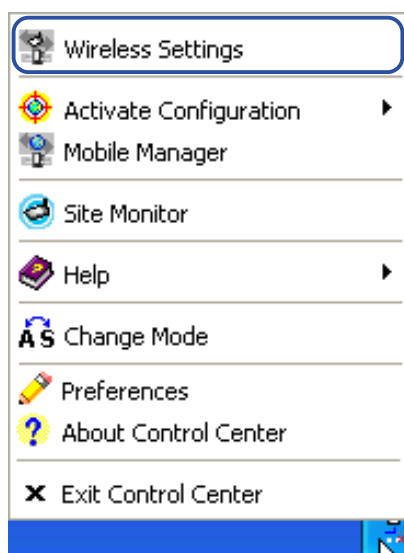
Follow these instructions to install the ASUS WLAN card into your computer.

1. Turn ON your computer and enter Windows.
2. Insert the ASUS WLAN card into your computer's PCMCIA slot until it is firmly seated.
3. Windows will automatically detect the ASUS WLAN card. The "Found New Hardware" wizard dialog will appear and begin installing the driver. (Windows 98SE / Me users: During installation, Windows may prompt you to insert the "Windows 98SE / Me CD-ROM" which contains some driver files. Insert your "Windows 98SE / Me CD-ROM" and click **Yes**.)
4. When the ASUS WLAN card setup is completed you can start up the WLAN utility to configure your ASUS WLAN card. Please refer to the User's Manual for more information.

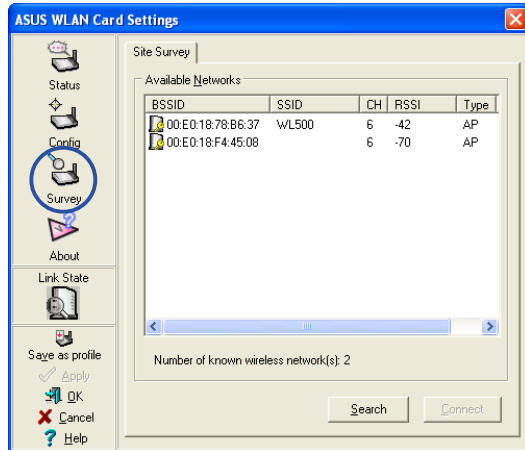


ASUS WLAN Utility Quick Start

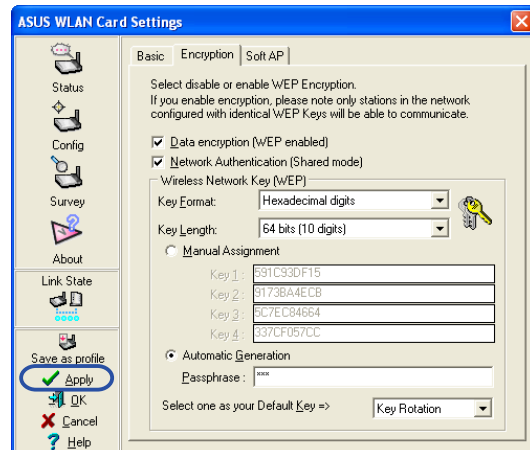
After installing the ASUS WLAN Card Utilities, you may need to make some settings before being able to use your wireless connection.



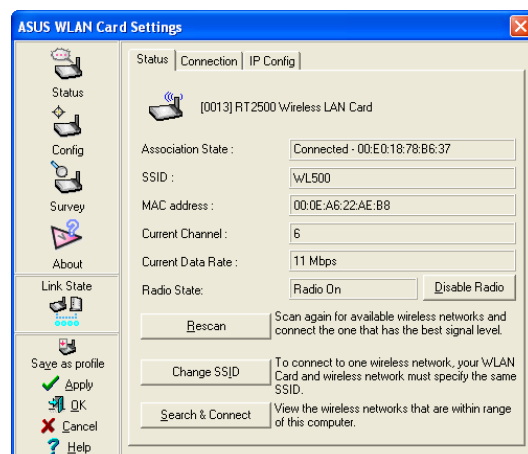
1. Right-click the ASUS WLAN icon and select "Wireless Settings"
2. Set the Network Name (SSID) to the same name as the SSID set in your wireless access point.



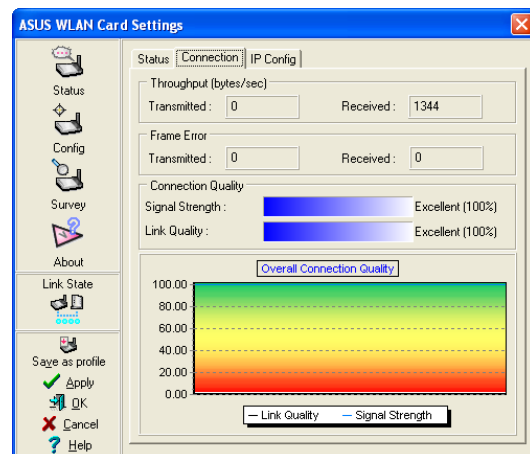
3. Use “Site Survey” if you don’t know the name of your access point(s).



4. Encryption settings must also match those set in the access point. Ask your network administrator about settings if necessary. Click **Apply** to save your settings



5. Check the “Status” page to see the “Association State”. It should show “Connected - xx:xx:xx:xx:xx:xx”.



6. You can also see the connection quality on the “Connection” page. Click **OK** to exit the utility.

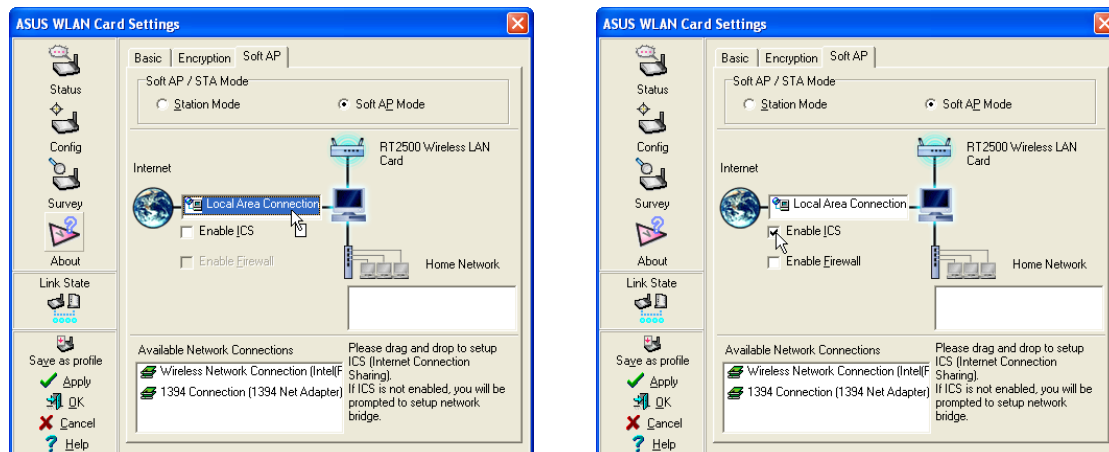


NOTE: Please refer to the User’s Manual for details on WEP/WPA settings and details on using the WLAN utility.

Quick Start Guide

Soft AP (Windows XP Only)

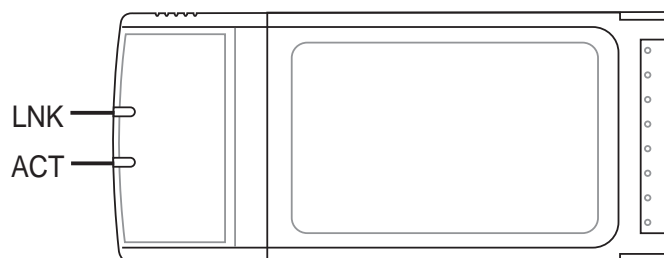
Soft AP mode allows the ASUS WLAN card to act as a virtual access point. The computer needs to be connected to a wired network using an Ethernet connection in order to provide network access to WLAN clients.



1. Select Soft AP Mode
2. Drag and drop a wired network connection next to the globe icon.
3. Enable ICS and Firewall if desired. Refer to Windows help for information on "Internet Connection Sharing".
4. You can easily switch between Soft AP and Station mode by right clicking the taskbar icon and selecting "A-S Change Mode"

Reading the ASUS WLAN Status Indicators

The part of the ASUS WLAN Card that protrudes out of the PCMCIA socket consists of two LEDs that indicate the status of the ASUS WLAN Card .



LNK (Link) LED

- OFF:** No power, error, or not connected to a wireless AP or Router.
ON: Lights when connected to a wireless Access Point or Router.

ACT (Activity) LED

- OFF:** No wireless activity.
Blink: Transmitting or receiving wireless data.