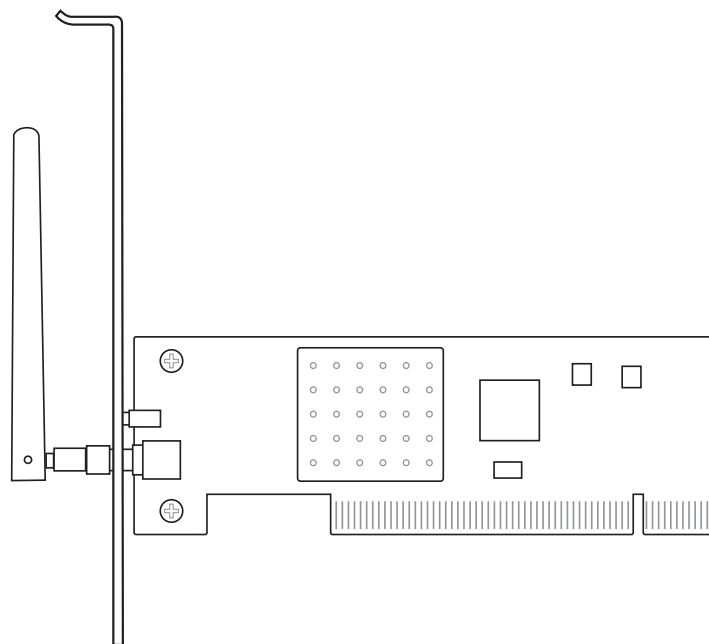




Wireless Local Area Network Card

WL-138g V2 / WL-138gE

(For 802.11g & 802.11b Wireless Networks)



Quick Start Guide

Quick Install Guide

System Requirements

To begin using the ASUS WLAN Card, you must have the following minimum requirements:

- Windows XP/2000/ME/98SE
- Standard 32-bit PCI Slot
- 32MB system memory or larger
- 300MHz processor or higher

The Product Package

When you receive the ASUS WLAN Card package, it should contain the following items:

- ASUS WLAN PCI Card
- Dipole Antenna
- ASUS WLAN Card Quick Start Guide
- CD-ROM Disc (Drivers, Utilities, Documentation)



Note: If any of the above items are not included or damaged, contact your local dealer for instructions.

Installation Procedures



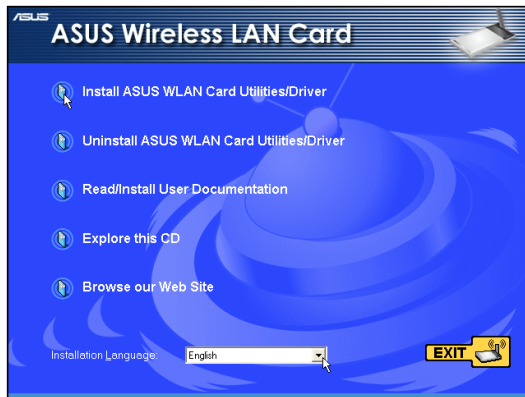
Important: Install the ASUS WLAN card utilities before inserting the ASUS WLAN Card into your computer.

Follow these instructions to setup the ASUS WLAN card.

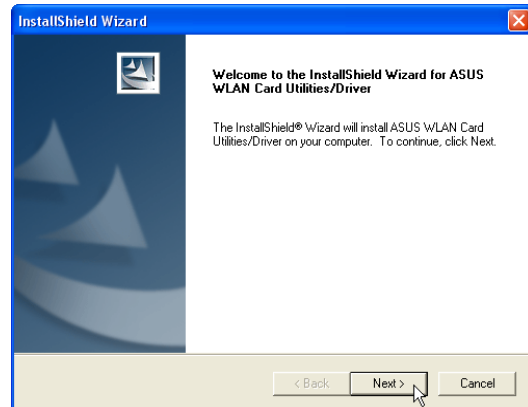
1. Install the ASUS WLAN card utilities and driver from the support CD.
2. Insert the ASUS WLAN card into your computer.

Installing the ASUS WLAN Card Utilities & Driver

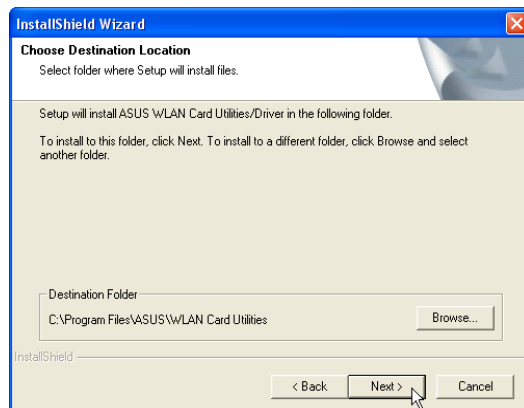
1. Insert the ASUS WLAN Card support CD and an autorun menu will appear. If your autorun is disabled, double click **SETUP.EXE** in the root directory of the support CD.



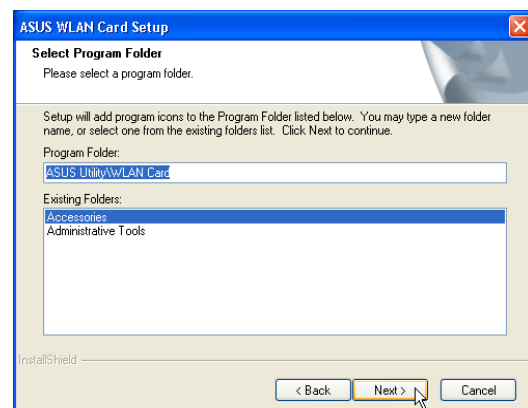
2. From the autorun menu, select your language and click **Install ASUS WLAN Card Utilities / Driver**.



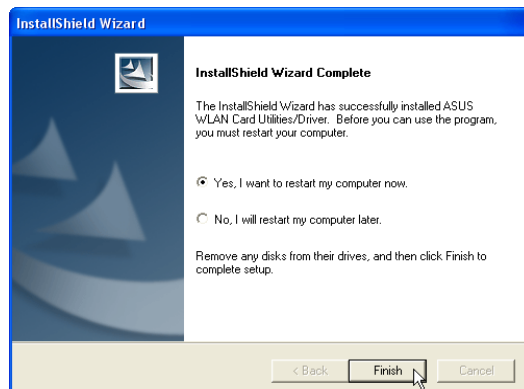
3. Click **Next** on the Welcome screen.



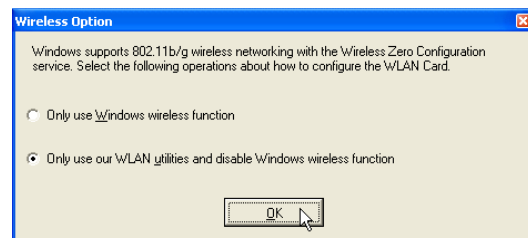
4. Click **Next** to use the default Destination Folder or click Browse to select another folder.



5. Click **Next** to place icons in the default program folder or type another folder name.



6. When Setup is complete, click **Finish** to exit the installation wizard.

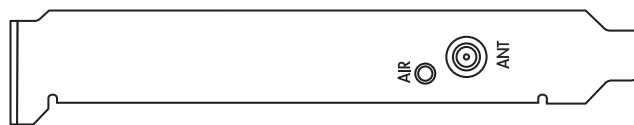


7. When the program is launched for the first time, you will be asked which function to use. Select to use our WLAN utilities for more functionality.

Quick Install Guide

Reading the ASUS WLAN Status Indicators

The ASUS WLAN card consists of one AIR indicator that shows the status of the ASUS WLAN Card.

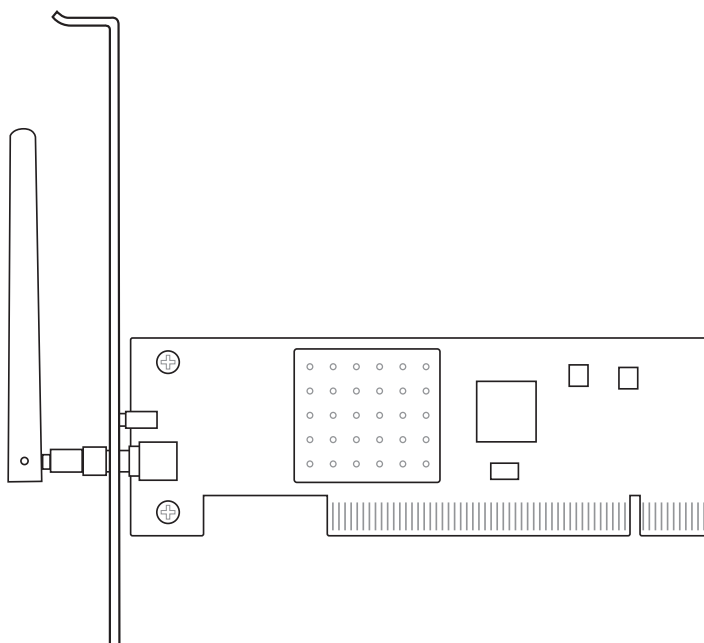


OFF: No wireless activity.

Blinking: Transmitting or receiving wireless data.

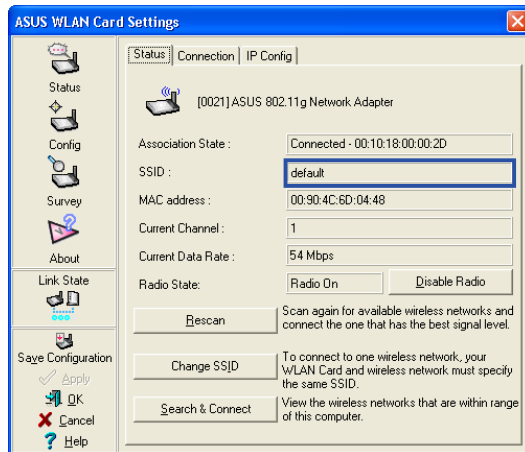
Orientating the Antenna

The ASUS WLAN Card has one external antenna. It is recommended that you adjust the external antenna straight up for maximum range and higher link quality.

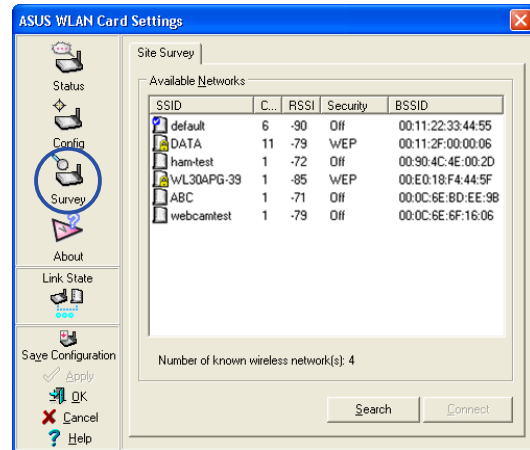


ASUS WLAN Utility Quick Start

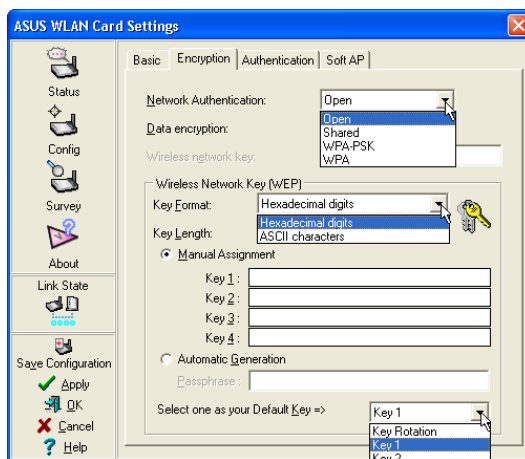
After installing the ASUS WLAN driver and utility, you may need to make some settings before being able to use your wireless connection.



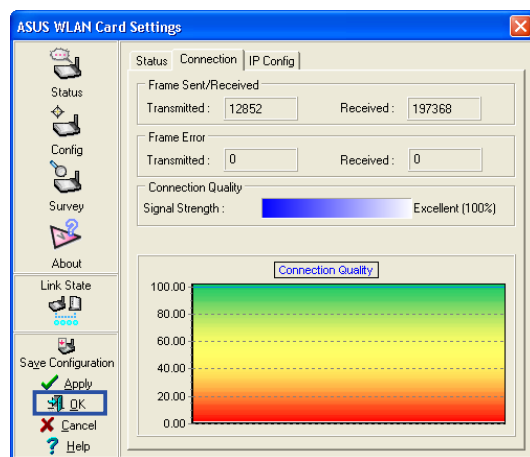
1. Set the Network Name (SSID) to the same name as the SSID set in your access point.



2. Use "Site Survey" if you don't know the name of your access point(s).



3. Encryption settings must also match those set in the access point. Talk with your network administrator if necessary.



4. You can also see the connection quality on the "Connection" page. Click **OK** to exit the utility.

5. Click **Apply** to save your settings and check the "Status" page to see the "Association State". It should show "Connected - xx:xx:xx:xx:xx:xx".