



802.11b USB Pen Type WLAN Adapter

WL-161

(802.11b Wireless Networks)

Quick Start Guide

ASUSTeK COMPUTER INC.(Asia-Pacific)

Address 150 Li-Te Road,Peitou,Taipei,Taiwan 112
Telephone +886-2-2894-3447
Web site www.asus.com.tw

Technical Support

Telephone (MB/Component) +886-2-2890-7121(English)
(Notebook) +886-2-2890-7122(English)
(Server/PC) +886-2-2890-7123(English)
(Networking) +886-2-2890-7902(English)
Support fax +886-2-2890-7698

ASUS COMPUTER INTERNATIONAL (America)

Address 44370 Nobel Drive,Fremont,CA 94538,USA
Fax +1-510-608-4555
E-mail tmd1@asus.com
Web site usa.asus.com

Technical Support

Telephone (General) +1-502-995-0883
(Notebook) +1-510-739-3777
Support fax +1-502-933-8713
Support e-mail tsd@asus.com

ASUS COMPUTER GmbH (Germany and Austria)

Address Harkort Str.25, D-40880 Ratingen,Germany
Telephone +49-2102-95990
Fax +49-2102-959911
Online contact www.asuscom.de/sales

Technical Support

Telephone +49-2102-95990
Fax +49-2102-959911
Online support www.asuscom.de/support
Web site www.asuscom.de/news

ASUS COMPUTER (Middle East and North Africa)

Address P.O.Box 64 133,Dubai,U.A.E.
Telephone +9714-283-1774
Fax +9714-283-1775
Web site www.ASUSarabia.com

ASUS WL-161 WLAN Adapter Quick Start Guide

Read this Quick Start Guide before installing the ASUS WL-161 WLAN Adapter. For complete safety precautions and configuration details, please read the ASUS WL-161 WLAN Adapter User's Manual.

PACKAGE CONTENTS

If you buy the ASUS WL-161 WLAN Adapter, there are some items that will be included in the box.

Item	Location
ASUS WL-161 WLAN Adapter	In box
ASUS WL-161 WLAN Adapter CD-ROM	In box
ASUS WL-161 WLAN Adapter drivers/utility	On CD
ASUS WL-161 WLAN Adapter User's Manual	On CD
ASUS WL-161 WLAN Adapter Quick Start Guide	On CD

If any item is missing, please contact your product provider.

PRODUCT INTRODUCTION

The ASUS WL-161 WLAN Adapter provides high-speed wireless link and networking for desktops or notebooks. Users can have wireless connectivity simply by plugging the device into a PC Card slot and installing the driver/utility on a desktop or notebook. When used with WLAN Access Point or WLAN Router, mobile workers can move freely, while maintaining seamless links to the wired LAN.

SYSTEM REQUIREMENTS

Before installation, please check your system in advance and ensure it meets the minimum requirements as described below.

- Processor: Intel Celeron / Pentium II / Pentium III / Pentium IV; AMD Duron / Athlon
- Operating System: Microsoft Windows 98SE / ME / 2000 / XP
- System memory: 32MB at least
- Hard Drive Free Space: 5MB

INSTALLATION OVERVIEW

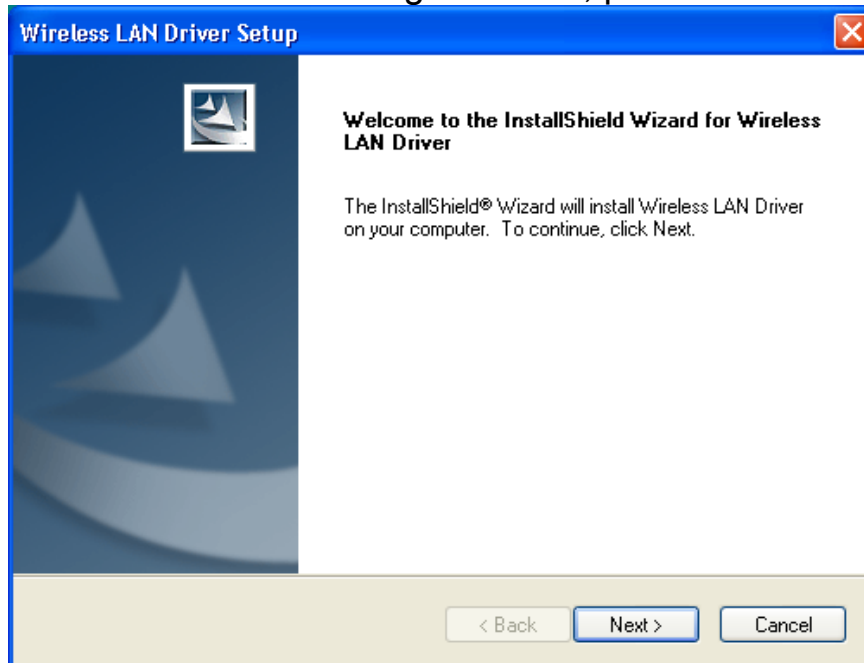
Start your computer and then insert the Installation/Documentation CD in the computer's CD-ROM drive. The auto-run installation menu window will appear and the auto-run installation application will detect the Operating System you are using automatically. Just click the button--with the name of Operating System you are using--in the menu to continue the installation process.

Note1: If the auto-run installation menu window doesn't appear automatically, you can utilize the Windows Explorer to browse CD content and run **install.exe** manually.

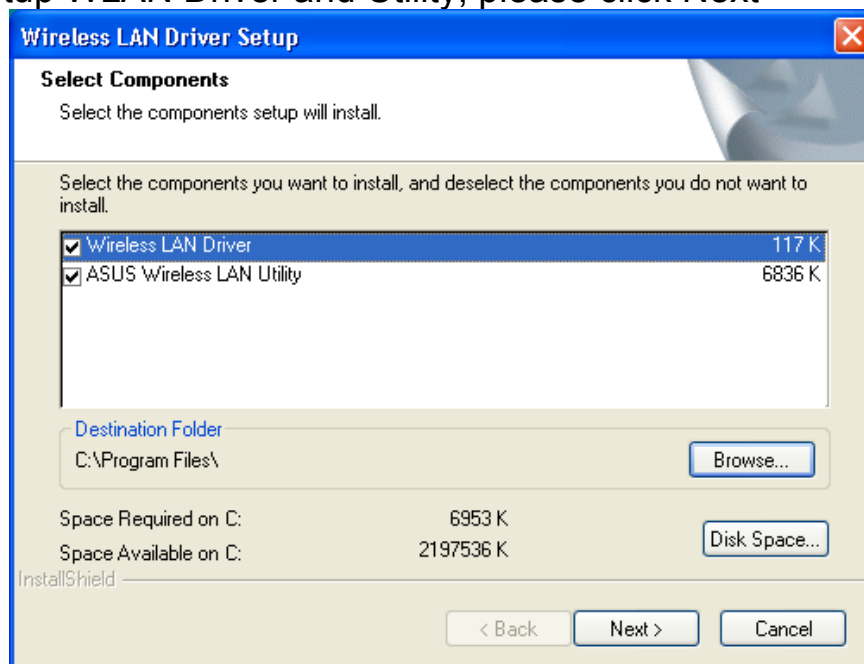
Note2: To prevent potential problems during installation, please use the auto-run installation tool on the CD to finish the driver installation before you plug the ASUS WL-161 WLAN Adapter into the computer.

INSTALLATION UNDER WINDOWS 2000 and XP

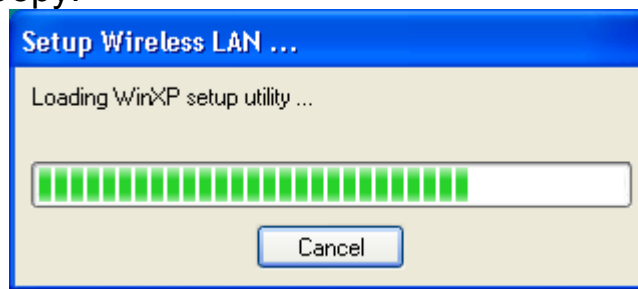
Step 1. Please insert the Device CD Windows XP/2000 was automatically running autorun. The Welcome dialog as below, please click Next



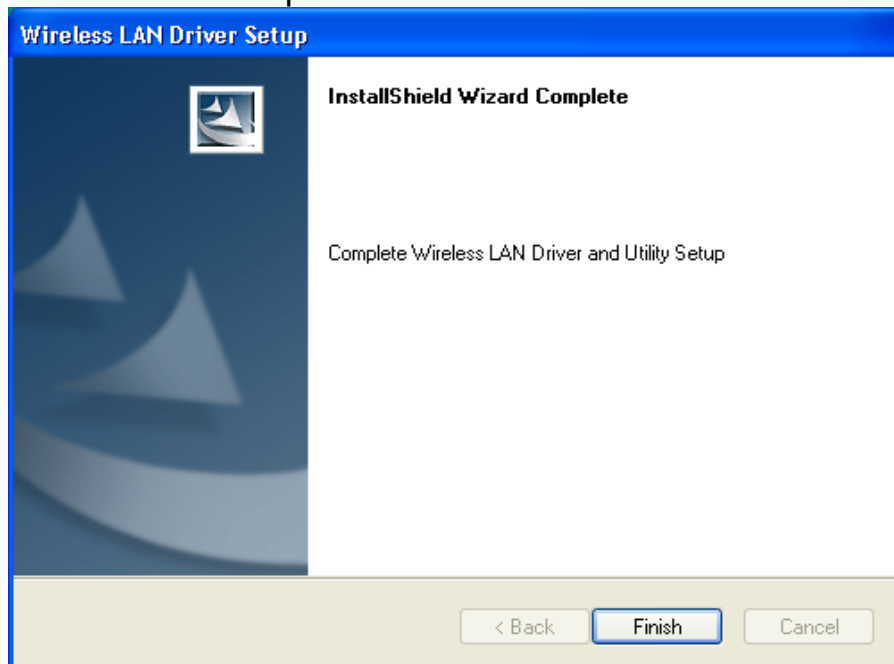
Step 2. Setup WLAN Driver and Utility, please click Next



Step 3. Starting Copy.



Step 4. Click Finish to complete installation.



Step 5. After you install Utility, Hold the ASUS WL-161 WLAN Adapter with the logo facing up, and insert the card into the slot, applying just enough pressure to make sure it is fully seated. Windows XP/2000 automatically detects the ASUS WL-161 WLAN Adapter.

After finished install driver and utility on your system. Let's starting to setup your wireless card. First of all we will see the connection notice in the right corne

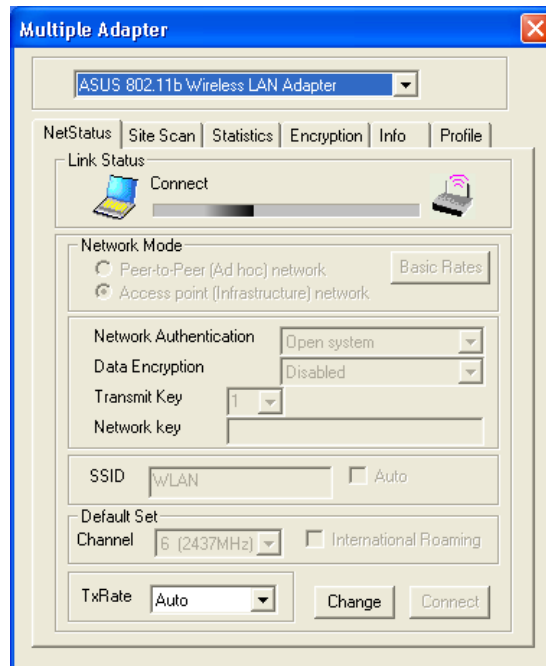


ASUS WL-161 WLAN Adapter Configuration

ASUS WL-161 WLAN Adapter uses its own management software. All functions controlled by users are provided by this application. When you insert the ASUS WL-161 WLAN Adapter into the USB slot, a new icon,



, should appear in the Windows System Tray automatically. Double click that icon and the configuration window will pop up. There are six tabs in this window:



NetStatus Tab

The current status of the ASUS WL-161 WLAN Adapter can be found here.

The NetStatus Tab contains several fields where operating parameters of the driver can be viewed or changed. Changes to any of the parameters in this panel can be applied to the driver without a need to restart the computer.

Site Scan Tab

Please wait system to scan or click Re-fresh, all Access Point and Ad-hoc devices within detectable range will be found and their related information will be displayed in the list. You can assign Access Point or Ad-hoc devices which you want connect to. We also can change presently connection just double click SSID from the list.

Statistics Tab

If you have a link with a wireless LAN device, then you can see the real time Link Status, Signal strength, and transmit/receive statistics in this tab. If check the **Turn Radio OFF**, the radio interface will be turn off.

Encryption Tab

You may want an additional measure of security on your wireless network, which can be achieved by using WEP (Wired Equivalent Privacy) encryption. WEP encrypts each frame transmitted from the radio using one of the Keys entered in this panel.

When an encrypted frame is received it will only be accepted if it decrypts correctly. This will only happen if the receiver has the same WEP Key used by the transmitter.

To be written to the driver and registry, each key must consist of hex

digits, which means that only digit 0-9 and letter A-F are valid entries. You can set this to disable, 64 bits or 128 bits.

Info Tab

Info tab shows the Driver version including the detail of Configuration Utility, and NIC firmware version. Users must use this version number when reporting their problems for technical support.

Profile tab

Profile tab allows you to save the information associated with a specific, so you can quickly and easily connect to your network when you are in that location. This page allows you to new, delete and edit your profiles.