



54Mbps USB Wireless LAN Adapter (WL-167g)



Quick Start Guide

System requirements

Before installing the ASUS USB Wireless LAN Adapter, make sure that your system meets the following requirements:

- Intel® Pentium® 4 or AMD K7/K8 system
- Minimum 64MB system memory
- Windows® 98SE*/ME/2000/XP operating system
- Optical drive (for software installation)
- An available USB port (USB 2.0 recommended because USB 1.1 cannot achieve maximum wireless performance)

Installation procedures

Follow these instructions to install the ASUS USB Wireless LAN Adapter in your computer.

1. Install the device drivers and utilities from the support CD.
2. Connect the device to your computer.

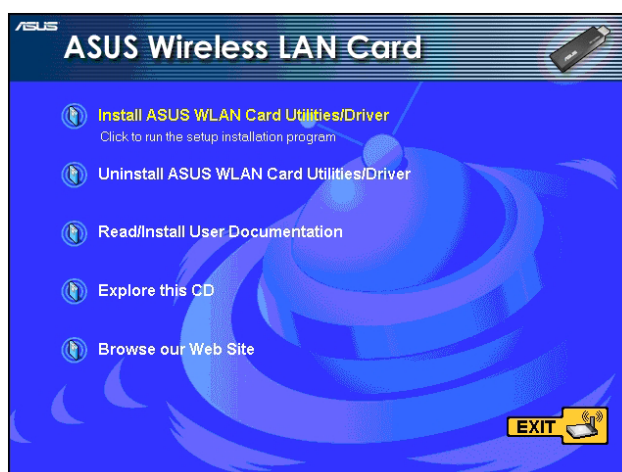


NOTE: You must install the ASUS USB Wireless LAN Adapter drivers and utilities before connecting the device to your computer.

Installing the device drivers and utilities

To install the device driver and utilities in your computer:

1. Insert the support CD to the optical drive.
2. Click “**Install ASUS WLAN Card Utilities/Driver**” when the ASUS Wireless LAN Card installation window appears.
3. The device drivers and utilities are copied into your computer.



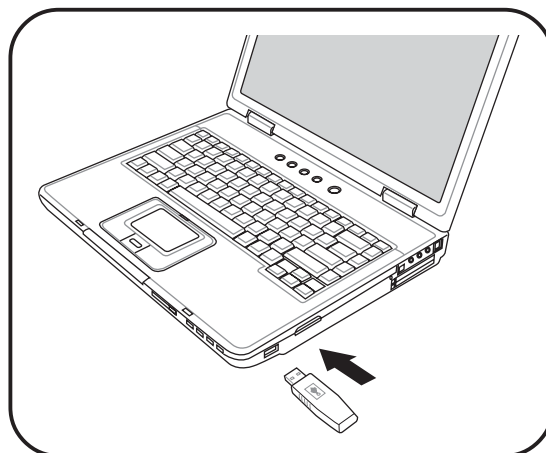
NOTE: If Autorun is NOT enabled in your computer, browse the contents of the support CD and double click the Setup.exe file to run the CD.

Installation procedures (Cont.)

Installing the device

To install the ASUS USB Wireless LAN Adapter in your computer:

1. Insert to any USB port.
2. When “Found New Hardware” dialog box appears, select “Install...automatically” and follow the instructions.



Windows® 2000 users - A **Digital Signature Not Found** dialog box may appear. Click **Yes** to proceed.



Windows® XP users - A **Windows Logo Testing Not Found** dialog box may appear. Click **Continue Anyway** to proceed.

3. After completing installation, configure the ASUS USB Wireless LAN Adapter using **ASUS Wireless Settings**.

Support Software

Control Center

The Control Center utility is a management software that launches applications and configures network settings. The Control Center starts automatically when the system boots and displays the Control Center icon in the Windows® taskbar. The Control Center icon serves as an application launcher, and indicator of signal quality and Internet connection.



Control Center right-click menu

Right-clicking the Control Center icon displays the right-click menu. The following sections describe the right-click menu utilities.



Support Software (Cont.)

Wireless Settings

The Wireless Settings is the main interface that allows you to control the ASUS USB Wireless LAN Adapter. You may use the Wireless Settings to view the operational and connection status, or to modify the device configuration.

The Wireless Settings window is composed of the property window and tabbed property sheets. Click an icon in the property window to display its tabbed property sheets.

About

Click the **About** icon to view the software version, driver version, and copyright information.

Link State

Displays the current connection status of the wireless LAN adapter to the AP or to other Wi-Fi devices. An icons represents the Link State for easy identification. Refer to the table below for icon indications.

Tabbed property sheets

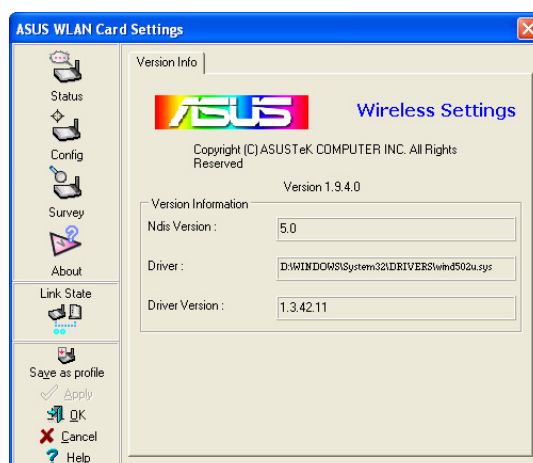
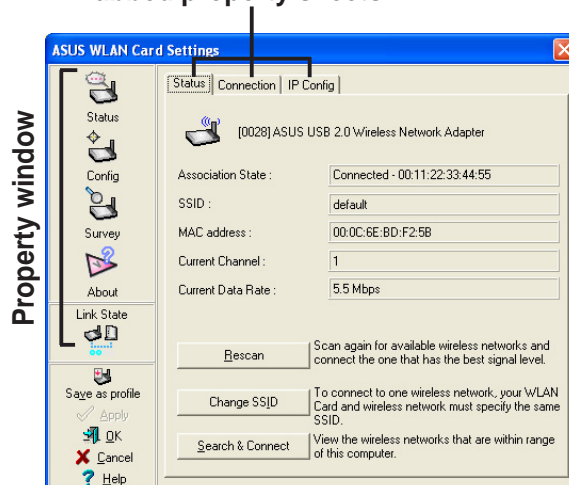


Table of Icon Indications

	Excellent link quality (Infrastructure)		Not linked (Infrastructure)
	Good link quality (Infrastructure)		Linked (Ad-hoc)
	Fair link quality (Infrastructure)		Not linked (Ad-hoc)
	Poor link quality (Infrastructure)		Scanning

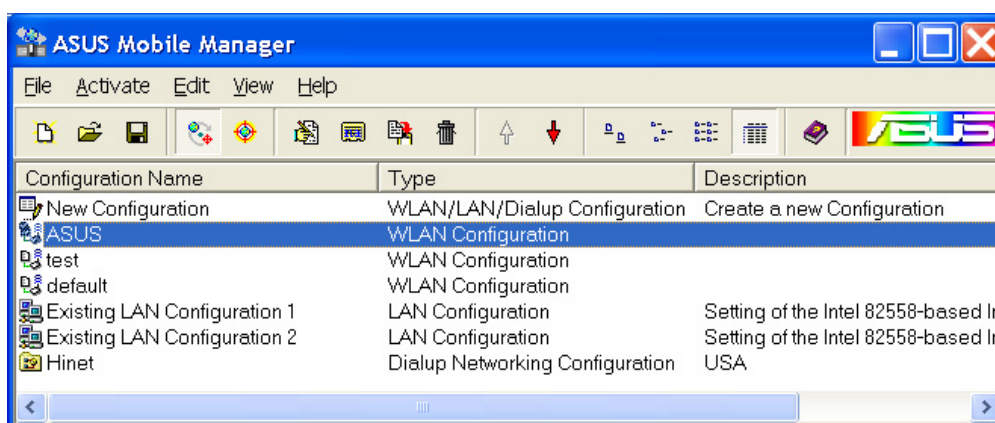
Support Software (Cont.)

Mobile Manager

The Mobile Manager is a convenient tool to setup and manage network location settings. This utility allows users to configure multiple alternative configurations for different locations.

Launch the Mobile Manager utility by:

- Clicking the Windows® **Start** button. Select **Programs > ASUS Utility > WLAN Card > Mobile Manager**, or
- Right-clicking the **Control Center** icon on the Windows® taskbar, then select **Mobile Manager**.



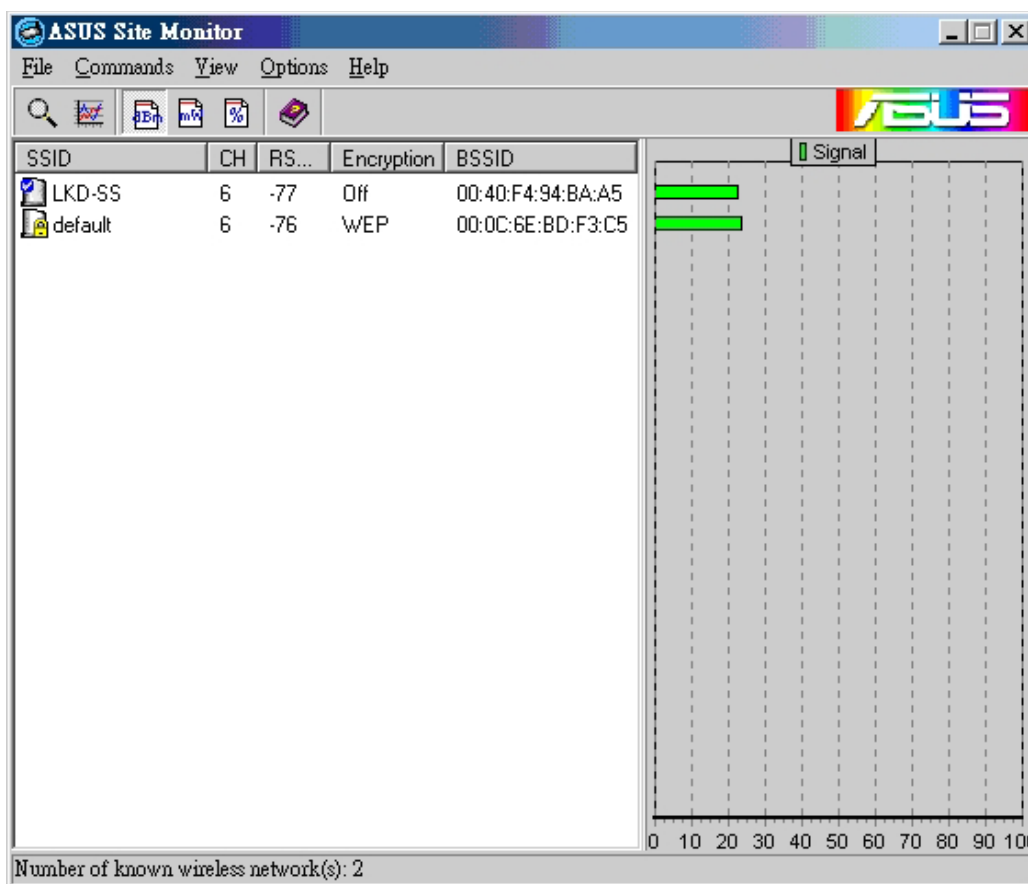
Support Software (Cont.)

Site Monitor

The Site Monitor utility measures the signal-to-noise (SNR) values of all available wireless networks. Use this utility to determine the best location for the ASUS USB Wireless LAN Adapter .

To launch the site monitor:

- Click the Windows® **Start** button, then select **Programs > ASUS Utility > WLAN Card > Site Monitor**, or
- Right-click the **Control Center** icon on the Windows taskbar, then select **Site Monitor**.



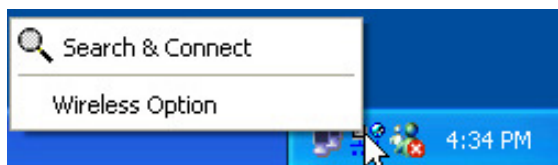
Support Software (Cont.)

TroubleShooter

The TroubleShooter utility provides a flowchart on how to connect the ASUS USB Wireless LAN Adapter to a wireless network.

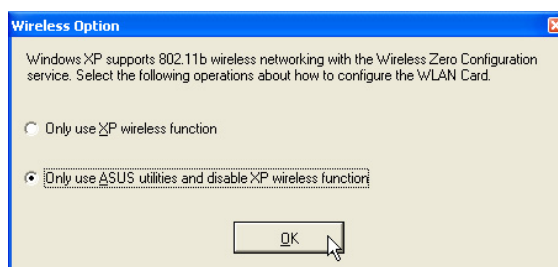
Control Center left-click menu

Left-clicking the Control Center icon displays the left-click menu. The options are described below.



Search & Connect – Displays available wireless networks within range.

Wireless Option – Sets your Windows® XP wireless networking environment. The **Wireless Option** window appears when you select this option. Select “**Only use ASUS utilities and disable XP wireless function**” to avail all ASUS USB Wireless LAN adapter features. Click **OK**.



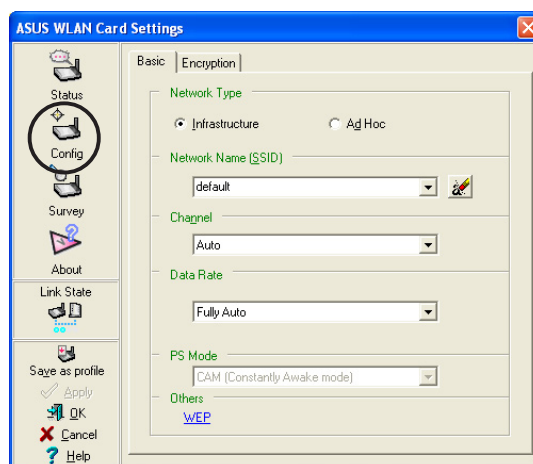
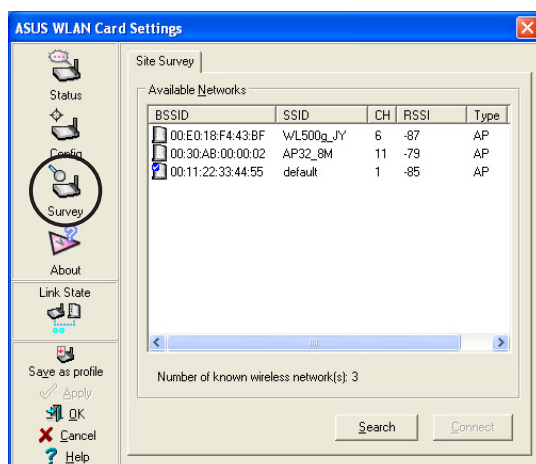
Wireless Connections

Connecting to Access Points (Infrastructure mode)

The ASUS USB Wireless LAN Adapter is set to Infrastructure mode by default. In an Infrastructure network, the device connects to an access point (AP) that serves as the link to other wireless device(s) or to a wired network.

To connect the ASUS USB Wireless LAN Adapter to an access point.

1. Launch the Wireless Settings utility by double-clicking the Control Center icon in the Windows® taskbar.

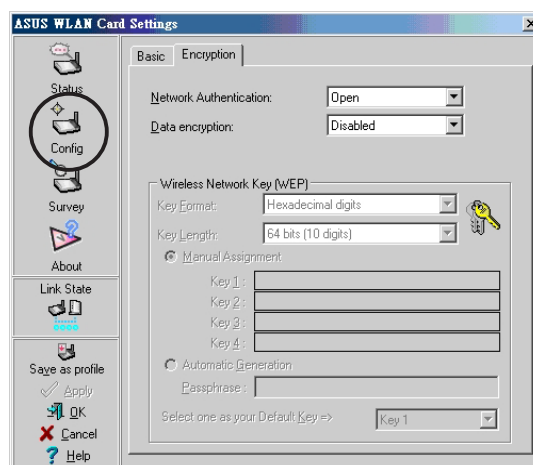


2. Click The **Survey** button to scan available APs within the ASUS USB Wireless LAN Adapter range. Select the AP you wish to connect.
3. Click the **Config** button to configure the device settings. Set the Network type to **Infrastructure**, then enter the **Network Name (SSID)** and **Channel** of the AP you wish to connect. Click **Apply** when done.
4. Click the **Encryption** tab if your selected AP has an enabled encryption (🔒).

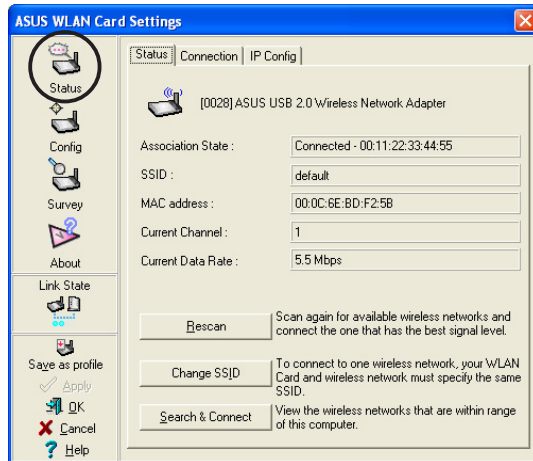
Obtain the encryption keys from the network administrator, then enter them in the **Key** fields. Click **Apply** when finish.



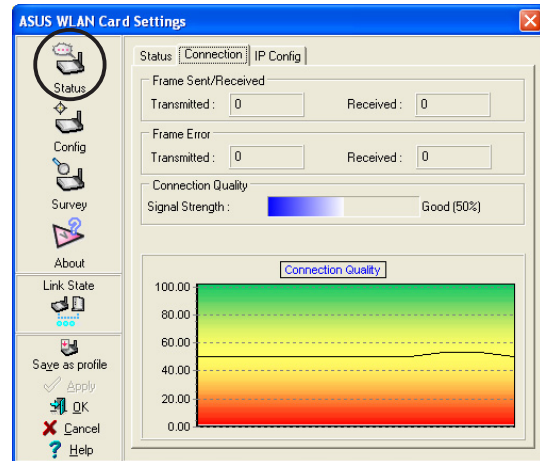
IMPORTANT! The encryption settings of the device and the AP must be identical to establish connection.



Wireless Connections (Cont.)



5. Click the **Status** button to verify if the device is connected to the AP. If connection is established, the **Association State** field shows “Connected - XX:XX:XX:XX:XX:XX”.



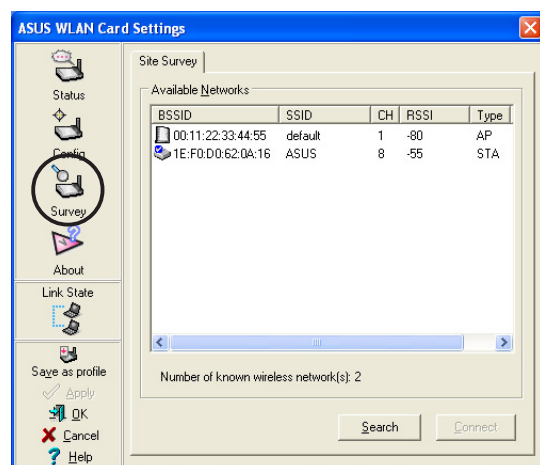
6. Click the **Connection** tab to display the connection strength and link quality of the device to the AP.

Connecting to another wireless device (Ad-hoc mode)

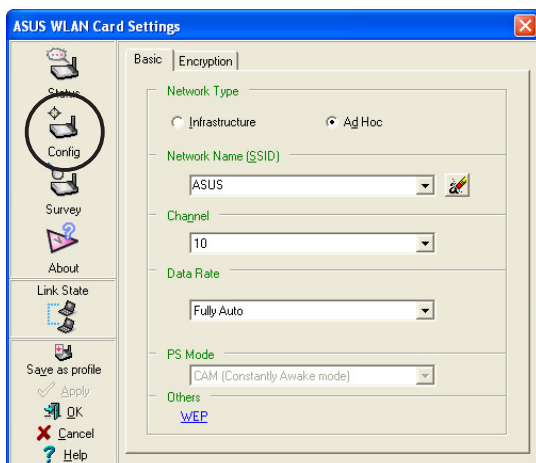
The ASUS USB Wireless LAN Adapter when set to Ad-hoc mode connects to other wireless device(s) in a wireless network.

To connect the ASUS USB Wireless LAN Adapter to another wireless device:

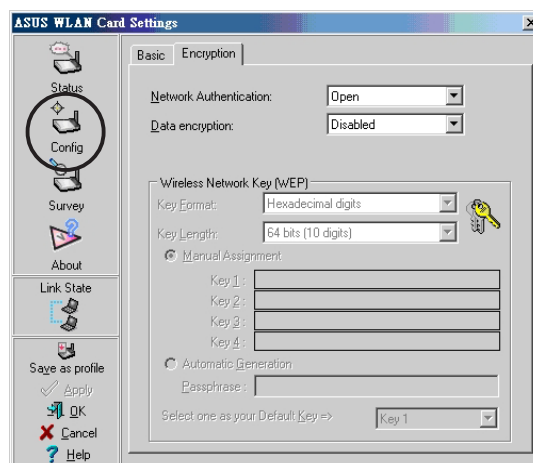
1. Launch the Wireless Settings utility by double-clicking the Control Center icon in the Windows® taskbar.
2. Click the **Survey** button to scan available wireless device(s) within the ASUS USB Wireless LAN Adapter range. Select the wireless device you wish to connect. A wireless device is indicated by this icon (📶).



Wireless Connections (Cont.)



- Click the **Config** button to configure the device settings. Set the Network type to **Ad hoc**, then enter the **Network Name (SSID)** and **Channel** of wireless device you wish to connect. Click **Apply** when done.

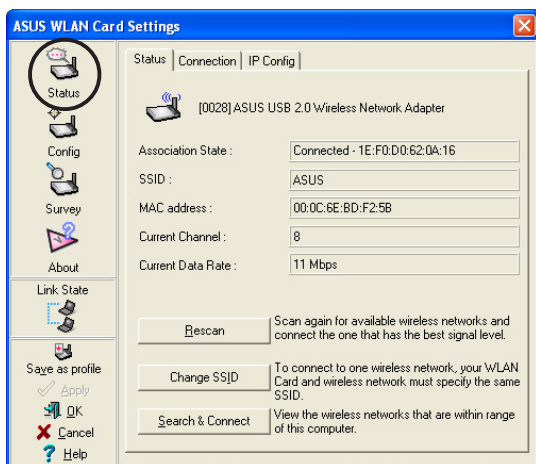


- Click the **Encryption** tab if your selected wireless device has an enabled encryption (🔑).

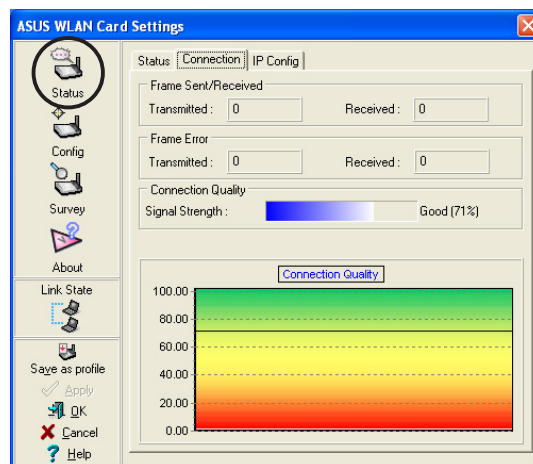
Obtain the encryption keys from the network administrator, then enter them in the **Key** fields. Click **Apply** when finish.



IMPORTANT! The encryption settings of the ASUS USB Wireless LAN Adapter and the wireless device must be identical to establish connection.



- Click the **Status** button to verify if the ASUS USB Wireless LAN Adapter is connected to the device. If connection is established, the **Association State** field shows "Connected - XX:XX:XX:XX:XX:XX".



- Click the **Connection** tab to display the connection strength and link quality between the ASUS USB Wireless LAN Adapter and the wireless device.