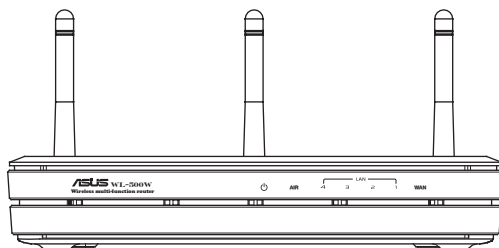




## **WL-500W SuperSpeed N Wireless Multi-Function Router**



## **Quick Start Guide**

## Manufacturer Contact Information

### **ASUSTeK COMPUTER INC. (Asia-Pacific)**

Company address: 15 Li-Te Road, Beitou, Taipei 11259

General (tel): +886-2-2894-3447 Web site address: [www.asus.com.tw](http://www.asus.com.tw)

General (fax): +886-2-2894-7798 General email: [info@asus.com.tw](mailto:info@asus.com.tw)

### **ASUS COMPUTER INTERNATIONAL (America)**

Company address: 44370 Nobel Drive, Fremont, CA 94538, USA

General (fax): +1-510-608-4555 Web site address: [usa.asus.com](http://usa.asus.com)

### **Technical support**

General support: +1-502-995-0883 Support (fax): +1-502-933-8713

Online support: <http://vip.asus.com/eservice/techserv.aspx>

### **ASUS COMPUTER GmbH (Germany & Austria)**

Company address: Harkort Str. 25, D-40880 Ratingen, Germany

General (tel): +49-2102-95990 Web site address: [www.asus.com.de](http://www.asus.com.de)

General (fax): +49-2102-959911 Online contact: [www.asus.com.de/sales](http://www.asus.com.de/sales)

### **Technical support**

Components: +49-2102-95990 Online support: [www.asus.com.de/support](http://www.asus.com.de/support)

Notebook: +49-2102-959910 Support (fax): +49-2102-959911



## Table of contents

<b>1. Package contents .....</b>	<b>2</b>
<b>2. Connecting ADSL modem and wireless router .....</b>	<b>2</b>
1) Cable connection .....	2
2) Status indicators .....	3
3) Wall mount option .....	3
<b>3. Getting started .....</b>	<b>4</b>
1) Wired connection .....	4
2) Wireless Connection .....	4
3) Setting the IP address for wired or wireless client .....	4
4) Configuring the wireless router .....	5
5) Quick setup .....	6
<b>4. Application features .....</b>	<b>11</b>
1) Sharing USB storage .....	11
2) Setting up FTP site .....	13
3) Download Master .....	14
4) Sharing USB printer .....	16

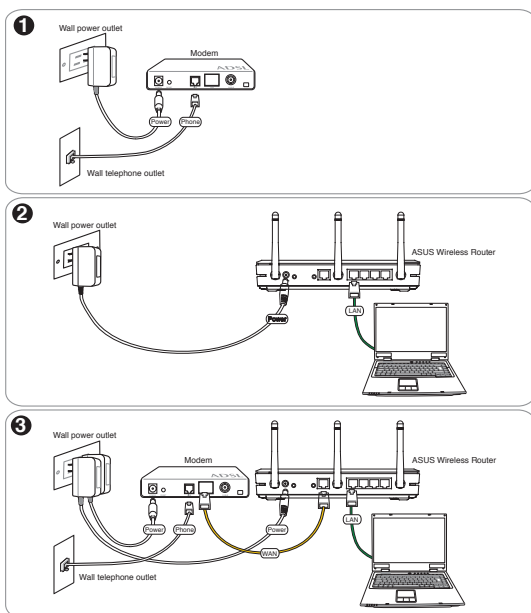


## 1. Package contents

- WL-500W wireless router x 1
- Power adapter x 1
- Utility CD x 1
- RJ45 cable x 1
- Quick Start Guide x 1

## 2. Connecting ADSL modem and wireless router

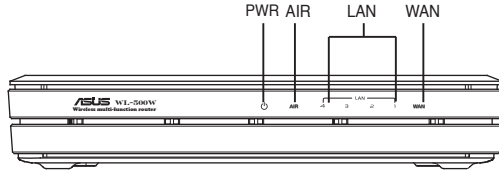
### 1) Cable connection







## 2) Status indicators



### PWR (Power)

Off	No power
On	System ready
Flashing-slow	Firmware upgrade failed
Flashing-quick	EZsetup processing

### AIR (Wireless Network)

Off	No power
On	Wireless system ready
Flashing	Transmitting or receiving data (wireless)

### WAN (Wide Area Network)

Off	No power or no physical connection
On	Has physical connection to an Ethernet network
Flashing	Transmitting or receiving data (through Ethernet cable)

### LAN 1-4 (Local Area Network)

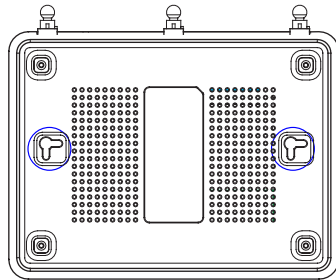
Off	No power or no physical connection
On	Has physical connection to an Ethernet network
Flashing	Transmitting or receiving data (through Ethernet cable)

## 3) Wall mount option

Out of the box, ASUS WL-500W Wireless Router is designed to sit on a raised flat surface like a file cabinet or book shelf. The unit may also be converted for mounting to a wall or ceiling.

Follow these steps to mount the ASUS Wireless Router to a wall:

1. Look on the underside for the two mounting hooks.
2. Mark two upper holes in a flat surface.
3. Tighten two screws until only 1/4" is showing.
4. Latch the hooks of the ASUS Wireless Router onto the screws.



**Note:** Re-adjust the screws if you cannot latch the ASUS Wireless Router onto the screws or if it is too loose.



## 3. Getting started

The ASUS WL-500W Wireless Router can meet various working scenarios with proper configuration. The default settings of the wireless router may change to meet your individual needs. Thus, before using the wireless router, check the basic settings to make sure they all work in your environment.

ASUS provides a utility named EZSetup for fast wireless configuration. If you would like to use EZSetup for your router configuration, refer to chapter 6 of user manual in support CD.



**Note:** Wired connection for initial configuration is recommended to avoid possible setup problems due to wireless uncertainty.

### 1) Wired connection

The WL-500W Wireless Router is supplied with an Ethernet cable in the package. The wireless router has an integrated auto-crossover function. Thus, you can either use a straight-through or a crossover cable for wired connection. Plug one end of the cable to the LAN port on the rear panel of the router and the other end to the Ethernet port on your PC.

### 2) Wireless Connection

For establishing wireless connection, you need an IEEE 802.11b/g compatible WLAN card. Refer to your wireless adapter user manual for wireless connection procedures. By default, the SSID of the wireless router is "default" (in lower case), encryption is disabled and open system authentication is used.

### 3) Setting IP address for wired or wireless client

To access the WL-500W Wireless Router, you must have the correct TCP/IP settings on your wired or wireless clients. Set the IP addresses of the clients within the same subnet of WL-500W.

#### Getting an IP address automatically

The WL-500W Wireless Router integrates DHCP server functions, thus, your PC gets an IP address automatically.

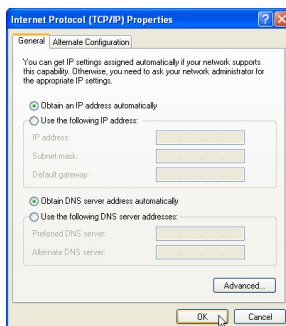


**Note:** Before rebooting your PC, switch ON the wireless router and make sure the router is ready.

#### Setting up the IP address manually

To manually set the IP address, you need to know the default settings of the wireless router:

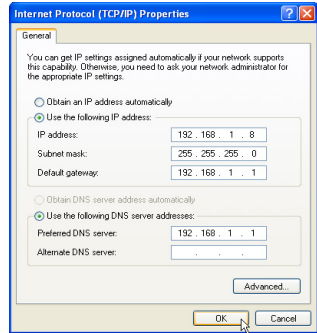
- IP address 192.168.1.1
- Subnet Mask 255.255.255.0





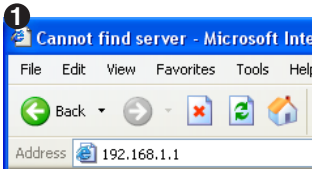
To set up the connection with a manually assigned IP address, the address of your PC and the wireless router must be within the same subnet:

- IP address: 192.168.1.xxx (xxx can be any number between 2 and 254. Make sure the IP address is not used by other device)
- Subnet Mask: 255.255.255.0 (same as WL-500W)
- Gateway: 192.168.1.1 (IP address of WL-500W)
- DNS: 192.168.1.1 (WL-500W), or assign a known DNS server in your network.



## 4) Configuring the wireless router

Follow the steps below to enter the Web configuration interface of WL-500W.

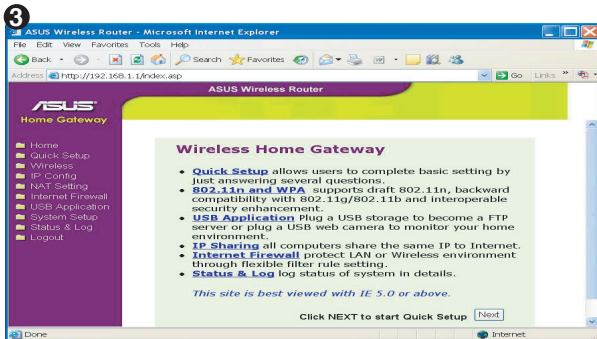


Enter the following address in your web browser: <http://192.168.1.1>



### Defaults

User name: **admin** Password: **admin**



After logging in, you can see the ASUS Wireless Router home page.

The homepage displays quick links to configure the main features of the wireless router.



## 5) Quick setup

To start quick setup, click **Next** to enter the “Quick Setup” page. Follow the instructions to setup the ASUS Wireless Router.

1. Select your time zone and click **Next**.

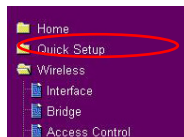
2. ASUS wireless router supports five types of ISP services: cable, PPPoE, PPTP, static WAN IP, and Telstra BigPond. Select your connection type and click **Next** to continue.

### Cable or dynamic IP user

If you are using services provided by cable ISP, select **Cable Modem or other connection that gets IP automatically**. If your ISP provides you with the hostname, the MAC address, and the heartbeat server address, fill these information into the boxes on the setting page; if not, click **Next** to skip this step.

### PPPoE user

If you use PPPoE service, select **ADSL connection that requires username and password**. It is known as PPPoE. You need to input the username and password provided by your ISP. Click **Next** to continue.



**Select Time Zone**

Please choose the time zone where you are locating in.

Time Zone: (GMT-12:00) Eirewetok, Kergalein

Next

**Select Internet Connection Type**

WL500W supports several kinds of connection to Internet through its WAN port. Please select connection type you need. In addition, before getting on Internet, please make sure you have connected WL500W's WAN port to your DSL or Cable Modem.

☒ Cable Modem or other connection type that gets IP automatically.

☐ ADSL connection that requires username and password. It is known as PPPoE.

☐ ADSL connection that requires username, password and IP address. It is known as PPTP.

☐ ADSL or other connection type that uses static IP address.

☐ Telstra BigPond Cable Modem Service.

Prev Next

**Fill Information Required by ISP**

Your ISP may require the following information to identify your account. If not, just press Next to ignore it.

Host Name:

MAC Address:

Heart Beat Server:

Prev Next

**WAN IP Setting**

Fill TCP/IP setting for WL500W to connect to Internet through WAN port.

Get IP automatically? ☒ Yes ☐ No

IP Address:

Subnet Mask:

Default Gateway:

Get DNS Server automatically? ☒ Yes ☐ No

DNS Server 1:

DNS Server 2:

Prev Next

**Set Your Account to ISP**

If you apply an account with dynamic IP. You must get user account and password from your ISP. Please fill this data into the following fields carefully. Or, if you apply an ADSL account with static IP, just ignore user name and password information.

User Name:

Password:

Prev Next



## PPTP user

If you are using PPTP services, select **ADSL connection that requires username, password and IP address**. Fill in the username, password and IP address provided by your ISP into the fields. Click **Next** to continue.

Set Your Account to ISP	
If you apply an account with dynamic IP. You must get user account and password from your ISP. Please fill this data into the following fields carefully. Or, if you apply an ADSL account with static IP, just ignore user name and password information.	
User Name:	henk036@adsl-comfort
Password:	*****
<input type="button" value="Prev"/> <input type="button" value="Next"/>	

WAN IP Setting	
Fill TCP/IP setting for WL500W to connect to Internet through WAN port.	
Get IP automatically?	<input checked="" type="radio"/> Yes <input type="radio"/> No
IP Address:	219.31.111.12
Subnet Mask:	255.255.255.0
Default Gateway:	219.31.111.1
Get DNS Server automatically?	<input type="radio"/> Yes <input checked="" type="radio"/> No
DNS Server 1:	168.95.1.1
DNS Server 2:	
<input type="button" value="Prev"/> <input type="button" value="Next"/>	

## Static IP user

If you are using ADSL or other connection type that uses static IP address, select **ADSL or other connection type that uses static IP address**. Input the IP address, subnet mask, and default gateway provided by your ISP. You can specify DNS servers, or get DNS information automatically.

WAN IP Setting	
Fill TCP/IP setting for WL500W to connect to Internet through WAN port.	
Get IP automatically?	<input type="radio"/> Yes <input checked="" type="radio"/> No
IP Address:	219.31.111.12
Subnet Mask:	255.255.255.0
Default Gateway:	219.31.111.1
Get DNS Server automatically?	<input type="radio"/> Yes <input checked="" type="radio"/> No
DNS Server 1:	168.95.1.1
DNS Server 2:	
<input type="button" value="Prev"/> <input type="button" value="Next"/>	

- To set up your wireless interface, specify an SSID (Service Set Identifier), which is a unique identifier attached to packets sent over WLAN. This identifier emulates a password when a device attempts to communicate with your wireless router via WLAN.

Configure Wireless Interface	
First step to set your wireless interface is to give it a name, called SSID. In addition, if you would like to protect transmitted data, please select the Security Level and assign a password for authentication and data transmission if it is required.	
SSID:	WL500W
Security Level:	Low(NONE)
Passphrase:	
WEP Key 1 (10 or 26 hex digit):	
WEP Key 2 (10 or 26 hex digit):	
WEP Key 3 (10 or 26 hex digit):	
WEP Key 4 (10 or 26 hex digit):	
Key Index:	1
<input type="button" value="Prev"/> <input type="button" value="Finish"/>	

If you want to protect transmitted data, select a **Security Level** to enable encryption methods.

**Medium:** Only users with the same WEP key settings can connect to your wireless router and transmit data using 64bits or 128bits WEP key encryption.

**High:** Only users with the same WPA pre-shared key settings can connect to your wireless router and transmit data using TKIP encryption.



- Input four sets of WEP keys in the WEP Key fields (10 hexadecimal digits for WEP 64bits, 26 hexadecimal digits for WEP 128bits). You can also let the system generate the keys by inputting a Passphrase. Record the Passphrase and the WEP keys in your notebook, then click **Finish**.

For example, if we select WEP 64bits encryption mode and input 11111 as the Passphrase, the WEP Keys are generated automatically.

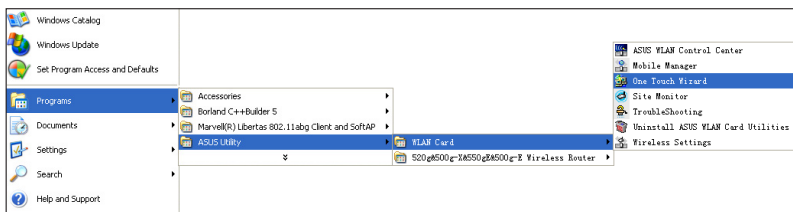
Configure Wireless Interface	
First step to set your wireless interface is to give it a name, called SSID. In addition, if you would like to protect transmitted data, please select the Security Level and assign a password for authentication and data transmission if it is required.	
SSID:	WL500W
Security Level:	Medium(WEP-64bits)
Passphrase:	11111
WEP Key 1 (10 or 26 hex digits):	1111111111
WEP Key 2 (10 or 26 hex digits):	1111111111
WEP Key 3 (10 or 26 hex digits):	1111111111
WEP Key 4 (10 or 26 hex digits):	1111111111
Key Index:	1
<div> <div></div> <div>Prev</div> <div>Finish</div> </div>	

- Click **Save&Restart** to restart the wireless router and activate the new settings.
- To connect the wireless router from a wireless client, you can use Windows® Wireless Zero Configuration service to set up the connection. If you use ASUS Wireless Card on your computer, you can use the One Touch Wizard utility supplied in WLAN Card support CD for wireless connection.

Save & Restart
You have finished the basic setting. You can just press <b>Save&amp;Restart</b> button to apply your setting or perform other advanced settings.
<div>Save&amp;Restart</div>

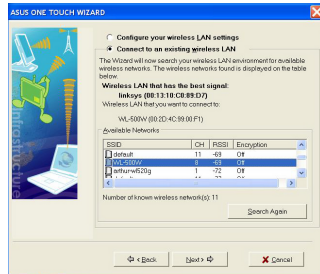
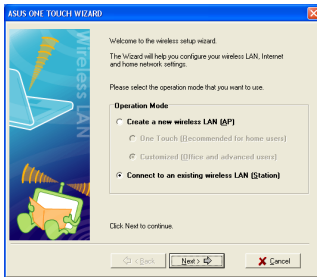
## Configuring ASUS WLAN Card with One Touch Wizard

If you have installed ASUS wireless card together with its utilities and drives on your PC, click **Start -> All Programs -> ASUS Utility-> WLAN Card -> One Touch Wizard** to launch the One Touch Wizard utility.

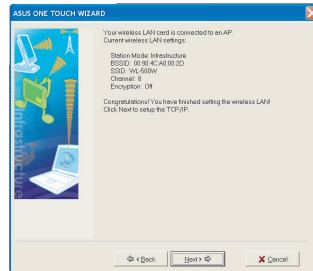
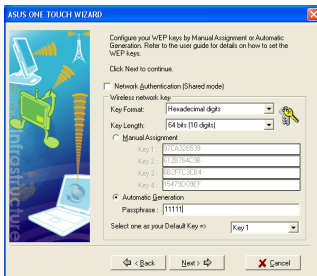




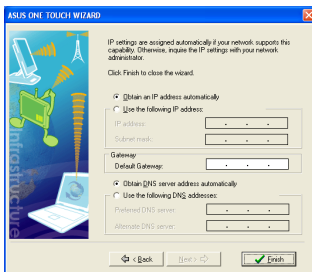
- 1) Select **Connect to an existing wireless LAN (Station)** radio button and click **Next** to continue.
- 2) One Touch Wizard searches and displays the available APs in the **Available Networks** list. Select WL-500W and press **Next** to continue.



- 3) Set the authentication and encryption of your WLAN card the same with those at WL-500W. In the previous steps the **Key Length** is **64 bits**, **Passphrase** is **11111**. Click **Next** to continue.
- 4) It takes several seconds for the wireless card to associate with WL-500W. Press **Next** to setup TCP/IP for your WLAN Card.



- 5) Setup the IP address of the WLAN Card according to your network condition. After the setup is complete, click **Finish** to exit the One Touch Wizard.

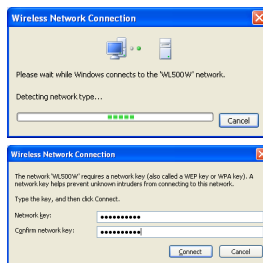
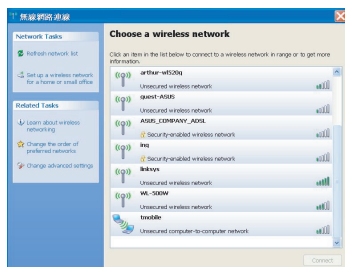




## Configuring WLAN card with Windows® WZC service

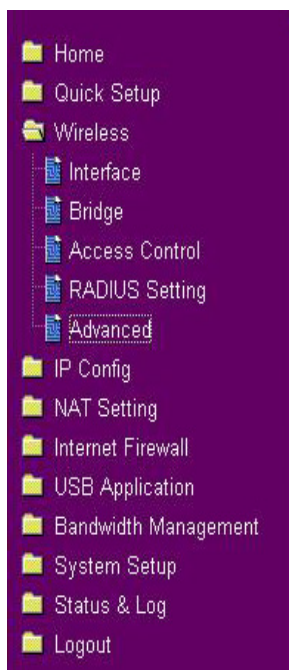
If you use non-ASUS wireless card, you can set up the wireless connection with Windows® Wireless Zero Configuration (WZC) service.

- 1) Double-click the wireless network icon on the task bar to view available networks. Select your wireless router and click **Connect**.
- 2) Input the 10-digit keys you have set on the wireless router and click **Connect**. The connection is complete within several seconds.



## 7. Configuring advanced features

To view and adjust other settings of the wireless router, enter the Web configuration page of WL-500W. Click on items on the menu to open a submenu and follow the instructions to setup the router. Tips show up when you move your cursor over each item. Refer to user manual in support CD for detailed information.







## 4. Application features

The WL-500W Wireless Router provides multiple application features such as the USB storage share, the Download Master (a download utility), and the USB printer share. In this Quick Start Guide, the most popular features and their setup procedures are introduced. For more application features, please refer to the full version of the user manual included in the support CD.



**Warning:** Before unplugging the USB storage disk from WL-500W, you must eject the disk in **Status & Log -> External USB Disk** page to prevent data corruption.



**Note:** Before applying change and rebooting WL-500W, make sure all USB applications are disabled, it would take more than 20 seconds for WL-500W to reboot.

### 1) Sharing USB storage

To use this feature, you need to plug a USB storage disk to the USB2.0 port on the rear panel of WL-500W. Make sure the hard disk is formatted and partitioned properly.

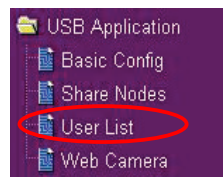


**Note:** FAT32 has a 2GB file size limitation and do not support files above that size. If you want to use files of over 2GB, you must format the disk to EXT2 file system.

### Creating user account

To share the data in the USB storage, you need to create user accounts first.

1. Click **USB Application -> User List** in the left side menu to open the configuration page.
2. Input **User Name** and **Password** for the accounts. Click **Add** to add the account to the list.
3. To delete an account, select the account from the list and click **Del**.
4. Click **Apply** to apply the changes and restart the wireless router.

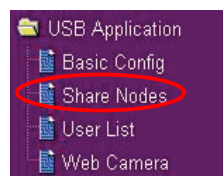


USB Application - User List		Add	Del
User Name	Password		
Restore		Finish	Apply
<b>Restore:</b>	Clear the above settings and restore the settings in effect.		
<b>Finish:</b>	Confirm all settings and restart WL500W now.		
<b>Apply:</b>	Confirm above settings and continue.		

### Creating share folder and access right

You can create a new share folder or share an existing folder in your hard disk.

1. Click **USB Application -> Share Nodes** in the left side menu to open the configuration page.





2. Click **Add** to add a share folder.

Share Nodes List	Add	Del	Edit
ASUS Wireless Router supports the shared folders with "Path" not exceeding 32 letters and "Shared Name" not exceeding 16 letters.			

3. Select the folder you want to share from Folder Manager and click **Ok**. To create a share folder, input the folder name in **Add Folder** field and press **Add**.

Folder Manager

/part0

my photo

System Volume Information

Recycled

Share Folder:

Add Folder: my movie

Ok

Add

4. Define the access right for the share folder by appoint **User Name** and **Access Right**. Click **Add** to add the access right rule. When finished, click **Apply** to save the configuration.

User Name	Access Right
Guest	Read Only
user1	Read Write
user2	
user3	

Apply

5. Set Network Neighbourhood Mode to **Apply rules in shared node list**, Work Group to **WORKGROUP** to enable all computers within WORKGROUP to access WL-500W USB storage.

USB Application - Share Nodes	
Network Neighborhood Mode:	Apply rules in shared node list
Device Name:	WL500W
Work Group:	WORKGROUP
FTP Mode:	Disable
Maximum Login User:	2
Initial Script:	

6. Click **Finish**.

Restore	Finish	Apply
---------	--------	-------

7. Click **Save & Restart** to restart the wireless router and activate the settings.

Save & Restart
Save&Restart will save all setting you have changed to ASUS Wireless Router and restart it. Please click <b>SaveRestart</b> button to continue.
Save&Restart

8. Open **My Network Place** from a computer connected to WL-500W. Click **view work group computers**, you can see WL-500W in the **Workgroup** category. All files on the USB storage are ready for sharing.

Workgroup

File Edit View Favorites Tools Help

Back Forward Stop Search Folders

Address Workgroup Go

Network Tasks

Add a network place View network

WL500W (WL500W)



## 2) Setting up FTP site

WL-500W can also serve as an FTP site. You can make your FTP site accessible to all users, or set up an access policy to restrict anonymous login. To use this feature, you need to plug a USB storage disk to the USB2.0 port on the rear panel of WL-500W. Make sure the hard disk is formatted and partitioned properly.

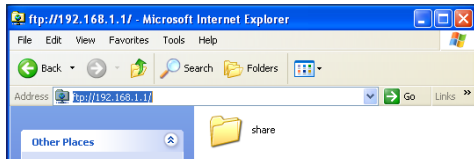
1. To allow anonymous login: Set Network Neighborhood Mode to **Share all partitions in disk**, FTP Mode to **Login to first partition**. The anonymous login directory is the root directory of first partition.

To allow account login only: Set Network Neighborhood Mode to **Apply rules in shared node list**, FTP Mode to **Login to first matched shared node**. Click **Add** in the Share Node List to specify the access directory and access right of FTP account.

2. The **Maximum Login User** field specifies the maximum number of concurrent users. The default value is 6.

3. Click **Finish** to activate the settings and reboot. This process may take several minutes.

4. Type **ftp://192.168.1.1** into the address box of your Web browser and press Enter to login the FTP site.

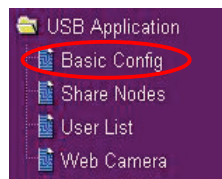




### 3) Download Master

The Download Master helps to manage the download tasks without turning your computer on. To use this function, you need to: 1) mount a USB storage to WL-500W Wireless Router; and 2) install ASUS Utilities from the support CD.

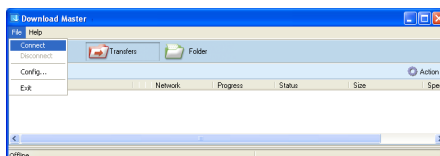
1. Click **Basic Config** page in USB Application folder.



2. Set **Enable Download Master** to **Yes**. If you want to share the downloaded file with your LAN users, set **Enable Download Share** to **Yes**. Click **Finish** and save and restart the wireless router.

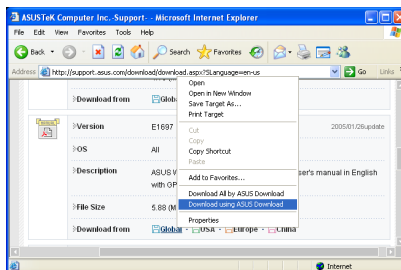
USB Application - Basic Config	
This page allows you to enable or disable applications individually.	
Enable Download Master?	<input checked="" type="radio"/> Yes <input type="radio"/> No
Enable Download Share?	<input checked="" type="radio"/> Yes <input type="radio"/> No
Default port range for Download Share:	From 10000 To 10050
Default Seed Time for BT(in hour):	24
Enable Media Server?	<input checked="" type="radio"/> Yes <input type="radio"/> No
USB Port for Media Server:	<input checked="" type="radio"/> Lower Port <input type="radio"/> Upper Port
<input type="button" value="Restore"/> <input type="button" value="Finish"/> <input type="button" value="Apply"/>	

3. Open Download Master from Start -> All Programs -> ASUS Utility -> WL-500W Wireless Router -> Download Master. Click **File -> Connect** to associate with WL-500W.



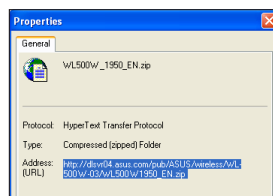
4. **HTTP download (1)**

Right click the download link on the Web page and click **Download using ASUS Download**. A window in step 5 appears to indicate download progress.



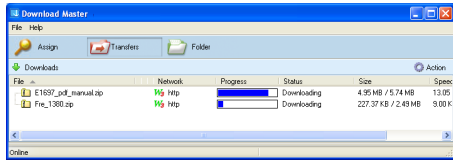
#### HTTP download (2)

Right click the download link on the Web page and click **Properties**. Copy the download **Address (URL)**.

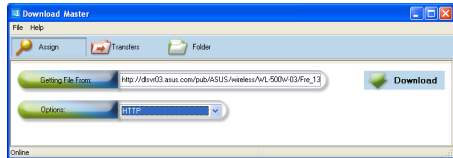




If you select **Download using ASUS Download**, you can see the download task is added to the **Transfer** list. The blue bars indicate the progress of download tasks.

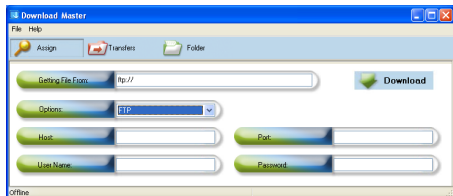


If you copy the download address, click **Assign** button in the utility. Paste the address into **Getting File From** box, select **HTTP** from Options field, and click **Download** button to start.



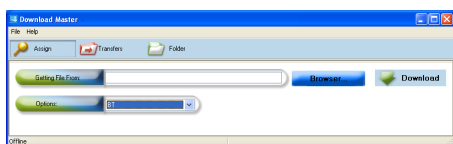
##### 5. FTP download

Click **Transfer** button of the Download Master and select **FTP** in the Options field. Input the FTP site address, Port number, User Name, Password. Click Download to start.

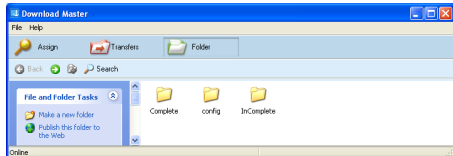


##### 6. BT download

Save the BT seed on your computer. Click **Transfer** button of the Download Master and select **BT** in the Options field. Click **Browse** to locate the seed file. Click **Download** to start.



##### 7. Click **Folder** button to view the download file. Open the **Complete** folder to view or copy the finished files to your local hard disk. The unfinished tasks are kept in **InComplete** folder.



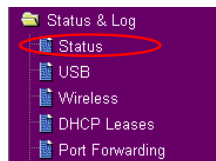


## 4) Sharing USB printer

You can connect a compatible USB printer to the USB2.0 port of WL-500W to share the printer with your LAN users. Follow the procedures below to setup your computers to utilize the printer server function of WL-500W.

### Installing USB printer

Plug your USB printer to the USB2.0 port on WL-500W rear panel. To verify whether your printer is properly installed to the WL-500W Wireless router, click **Status & Log -> Status**. If **Printer Model** is correct and **Printer Status** is **On-Line**, you can share this printer within your LAN.

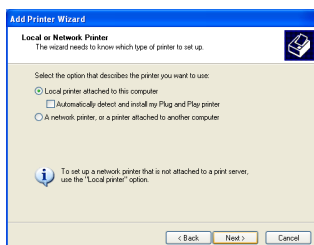
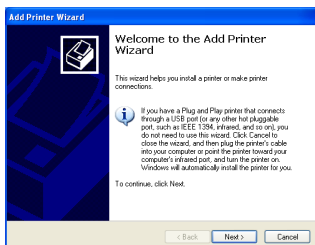


Printer	
Printer Model:	EPSON Stylus Photo R210
Printer Status:	On-Line
User:	
Action:	<input type="button" value="Remove"/>

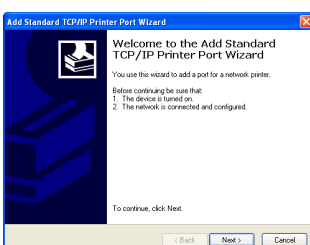
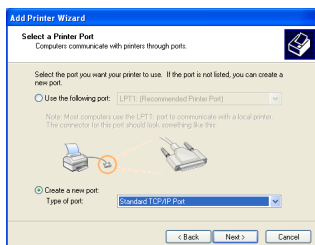
### Setting up printer client under Windows XP

Follow the steps below to install network printer on your clients.

1. Run Add Printer Wizard from **Start -> Printers and Faxes -> Add a printer**.
2. Select **Local printer attached to this computer** and click **Next**.



3. Select **Create a new port** and set Type of port to **Standard TCP/IP Port**, then click **Next**.
4. Click **Next** to setup TCP/IP port for accessing the network printer.





- Input the IP address of WL-500W in the **Printer Name or IP Address** field and click **Next**.

- Select **Custom** and click **Settings**.

- Set **Protocol** to **LPR** and type **LPRServer** in **Queue Name** field. Click **Next** to continue.

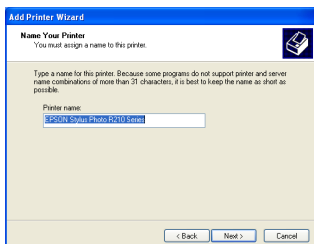
- Press **Next** to finish standard TCP/IP port setting.

- Press **Finish** to complete the settings and return to Add Printer Wizard.

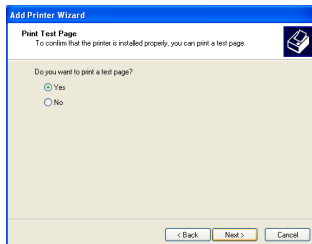
- Install printer driver from the vendor-model list. If your printer is not in the list, click **Have Disk** to manually locate the printer driver.



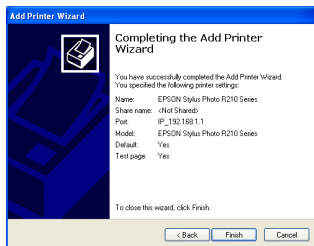
11. Click **Next** to accept the default name for the printer.



12. Select **Yes** to print a test page. Click **Next** to print.



13. The installation is complete. Click **Finish** to quit the Add Printer Wizard.



**Note:** If you have already installed the printer locally on your computer, right click the printer icon and select **Property -> Port** tab to add a standard TCP/IP port. Click **Add Port** then select **Standard TCP/IP Port** and click **New Port** button. Refer to step 5-8 for setting procedures.



**Note:** If you use Windows® 98 or ME which does not support Standard TCP/IP port, you need to use Romote Port which is supported by WL-500W.