

Content

English.....	1
繁體中文.....	6
简体中文.....	11
한국어.....	16
日本語.....	21



FCC Warning Statement

This device complies with Part 15 of the FCC Rules. Operation is subject to the following two conditions:

1. this device may not cause harmful interference, and
2. this device must accept any interference received, including interference that may cause undesired operation.

This equipment has been tested and found to comply with the limits for a class B digital device, pursuant to part 15 of the FCC Rules. These limits are designed to provide reasonable protection against harmful interference in a residential installation.

This equipment generates, uses and can radiate radio frequency energy and, if not installed and used in accordance with the instructions, may cause harmful interference to radio communications. However, there is no guarantee that interference will not occur in a particular installation. If this equipment does cause harmful interference to radio or television reception, which can be determined by turning the equipment off and on, the user is encouraged to try to correct the interference by one or more of the following measures:

- Reorient or relocate the receiving antenna.
- Increase the separation between the equipment and receiver.
- Connect the equipment into an outlet on a circuit different from that to which the receiver is connected.
- Consult the dealer or an experienced radio/TV technician for help.



CAUTION

Any changes or modifications not expressly approved by the party responsible for compliance could void the user's authority to operate the equipment.

Prohibition of Co-location

This device and its antenna(s) must not be co-located or operating in conjunction with any other antenna or transmitter.

Safety Information

To maintain compliance with FCC's RF exposure guidelines, this equipment should be installed and operated with minimum distance 20cm between the radiator and your body. Use on the supplied antenna.

Declaration of Conformity for R&TTE directive 1999/5/EC

Essential requirements – Article 3

Protection requirements for health and safety – Article 3.1a

Testing for electric safety according to EN 60950-1 has been conducted. These are considered relevant and sufficient.

Protection requirements for electromagnetic compatibility – Article 3.1b

Testing for electromagnetic compatibility according to EN 301 489-1 and EN 301 489-17 has been conducted. These are considered relevant and sufficient.

Effective use of the radio spectrum – Article 3.2

Testing for radio test suites according to EN 300 328- 2 has been conducted. These are considered relevant and sufficient.

CE Mark Warning



This is a Class B product, in a domestic environment, this product may cause radio interference, in which case the user may be required to take adequate measures.

DGT 警語

經型式認證合格之低功率射頻電機，非經許可，公司、商號或使用者均不得擅自變更頻率、加大功率或變更原設計之特性及功能。

低功率射頻電機之使用不得影響飛航安全及干擾合法通信；經發現有干擾現象時，應立即停用，並改善至無干擾時方得繼續使用。

前項合法通信，指依電信法規定作業之無線電通信。

低功率射頻電機須忍受合法通信或工業、科學及醫療用電波輻射性電機設備之干擾。

Declaration of Conformity

We, Manufacturer/Importer
(full address)

ASUS COMPUTER GmbH
HARKORT STR. 25
40880 RATINGEN, BRD. GERMANY

declare that the product
(description of the apparatus, system, installation to which it refers)

Broad Range Wireless Family Router **WL-520gU** **is in conformity with**

(reference to the specification under which conformity is declared)
in accordance with 89/336 EEC-EMC Directive and 1999/5 EC-R & TTE Directive

- | | | | |
|-------------------------------------|---|---|--|
| <input type="checkbox"/> EN 300328 | Electromagnetic compatibility and Radio spectrum Matters (ERM); wideband transmission equipment operating in the 2.4GHz ISM band and using spread spectrum modulation techniques; Part 1: technical characteristics and test conditions Part2: Harmonized EN covering essential requirements under article 3.2 of the R&TTE | <input checked="" type="checkbox"/> EN 55022 | Limits and methods of measurement of radio disturbance characteristics of information technology equipment |
| <input type="checkbox"/> EN 300386 | Electromagnetic compatibility and Radio spectrum Matters (ERM);Telecommunication equipment; ElectroMagnetic Compatibility (EMC) requirements | <input checked="" type="checkbox"/> EN 55024 | Information Technology equipment-Immunity characteristics-Limits and methods of measurement |
| <input type="checkbox"/> EN 301489 | Electromagnetic compatibility and Radio spectrum Matters (ERM); Electromagnetic compatibility(EMC) standard for radio equipment and services; Part 17: Specific conditions for wideband data and HIPERLAN equipment | <input type="checkbox"/> EN 50360/
EN 50361 | the limitation of exposure of the general public to electromagnetic/network fields (0 Hz to 300 GHz) International Commission on Non-Ionising Radiation Protection (1998), Guidelines for limiting exposure in time-varying electric, magnetic, and electromagnetic fields |
| <input type="checkbox"/> EN 301 511 | Global System for Mobile communications (GSM);Harmonized EN for mobile stations in the GSM 900 and GSM 1800 bands covering essential requirements under article 3.2 of the R&TTE directive (999/5/EC) Directive | <input checked="" type="checkbox"/> EN 61000-3-2* | Disturbances in supply systems caused |
| <input type="checkbox"/> EN 301893 | Broadband Radio Access Networks (BRAN); 5 GHz high performance RLAN; Harmonized EN covering essential requirements of article 3.2 of the R&TTE Directive | <input checked="" type="checkbox"/> EN 61000-3-3* | Disturbances in supply systems caused |
| <input type="checkbox"/> EN 50081-2 | | <input type="checkbox"/> EN 55013 | Limits and methods of measurement of radio disturbance characteristics of broadcast receivers and associated equipment |
| <input type="checkbox"/> EN 50082-2 | | <input type="checkbox"/> EN 55020 | Immunity from radio interference of broadcast receivers and associated equipment |
| | | <input type="checkbox"/> EN 50081-2 | Generic emission standard Part 2 Industrial environment |
| | | <input type="checkbox"/> EN 50082-2 | Generic immunity standard Part 2: Industrial environment |

CE marking



(EC conformity marking)

The manufacturer also declares the conformity of above mentioned product with the actual required safety standards in accordance with LVD 73/23 EEC

- | | | | |
|-----------------------------------|---|-------------------------------------|---|
| <input type="checkbox"/> EN 60065 | Safety requirements for mains operated electronic and related apparatus for household and similar general use | <input type="checkbox"/> EN 60950-1 | Safety for information technology equipment including electrical business equipment |
| <input type="checkbox"/> EN 60335 | Safety of household and similar electrical appliances | <input type="checkbox"/> EN 50091-1 | General and Safety requirements for uninterruptible power systems (UPS) |

Manufacturer/Importer

Signature : 

Name : Jonathan Tseng

(Stamp)

Date : April.10 , 2007

Declaration of Conformity

We, Manufacturer/Importer
(full address)

ASUS COMPUTER GmbH
HARKORT STR. 25
40880 RATINGEN, BRD. GERMANY

declare that the product
(description of the apparatus, system, installation to which it refers)

Broad Range Wireless Family Router WL-520gC

is in conformity with

(reference to the specification under which conformity is declared)

in accordance with 89/336 EEC-EMC Directive and 1999/5 EC-R & TTE Directive

- | | | | |
|-------------------------------------|---|---|---|
| <input type="checkbox"/> EN 300328 | Electromagnetic compatibility and Radio spectrum Matters (ERM); wideband transmission equipment operating in the 2.4GHz ISM band and using spread spectrum modulation techniques; Part 1: technical characteristics and test conditions Part2: Harmonized EN covering essential requirements under article 3.2 of the R&TTE | <input checked="" type="checkbox"/> EN 55022 | Limits and methods of measurement of radio disturbance characteristics of information technology equipment |
| <input type="checkbox"/> EN 300386 | Electromagnetic compatibility and Radio spectrum Matters (ERM);Telecommunication equipment; ElectroMagnetic Compatibility (EMC) requirements | <input checked="" type="checkbox"/> EN 55024 | Information Technology equipment-Immunity characteristics-Limits and methods of measurement |
| <input type="checkbox"/> EN 301489 | Electromagnetic compatibility and Radio spectrum Matters (ERM); Electromagnetic compatibility(EMC) standard for radio equipment and services; Part 17: Specific conditions for wideband data and HIPERLAN equipment | <input type="checkbox"/> EN 50360/
EN 50361 | the limitation of exposure of the general public to electromagneticnetwork fields (0 Hz to 300 GHz) International Commission on Non-Ionising Radiation Protection (1998), Guidelines for limiting exposure in time-varying electric, magnetic, and electromagnetic fields |
| <input type="checkbox"/> EN 301 511 | Global System for Mobile communications (GSM);Harmonized EN for mobile stations in the GSM 900 and GSM 1800 bands covering essential requirements under article 3.2 of the R&TTE directive (999/5/EC) Directive | <input checked="" type="checkbox"/> EN 61000-3-2* | Disturbances in supply systems caused |
| <input type="checkbox"/> EN 301893 | Broadband Radio Access Networks (BRAN); 5 GHz high performance RLAN; Harmonized EN covering essential requirements of article 3.2 of the R&TTE Directive | <input checked="" type="checkbox"/> EN 61000-3-3* | Disturbances in supply systems caused |
| <input type="checkbox"/> EN 50013 | | <input type="checkbox"/> EN 55013 | Limits and methods of measurement of radio disturbance characteristics of broadcast receivers and associated equipment |
| <input type="checkbox"/> EN 50081-2 | | <input type="checkbox"/> EN 55020 | Immunity from radio interference of broadcast receivers and associated equipment |
| <input type="checkbox"/> EN 50082-2 | | <input type="checkbox"/> EN 50081-2 | Generic emission standard Part 2 Industrial environment |
| | | <input type="checkbox"/> EN 50082-2 | Generic immunity standard Part 2: Industrial environment |

CE marking



(EC conformity marking)

The manufacturer also declares the conformity of above mentioned product with the actual required safety standards in accordance with LVD 73/23 EEC

- | | | | |
|-----------------------------------|---|-------------------------------------|---|
| <input type="checkbox"/> EN 60065 | Safety requirements for mains operated electronic and related apparatus for household and similar general use | <input type="checkbox"/> EN 60950-1 | Safety for information technology equipment including electrical business equipment |
| <input type="checkbox"/> EN 60335 | Safety of household and similar electrical appliances | <input type="checkbox"/> EN 50091-1 | General and Safety requirements for uninterruptible power systems (UPS) |

Manufacturer/Importer

Signature : 

Name : Jonathan Tseng

(Stamp)

Date :April.10 , 2007



1. Package Contents

- WL-520GU/GC wireless router x 1
- Power adapter x 1
- Utility CD x 1
- RJ45 cable x 1
- Quick Start Guide x 1

2. Specification summary

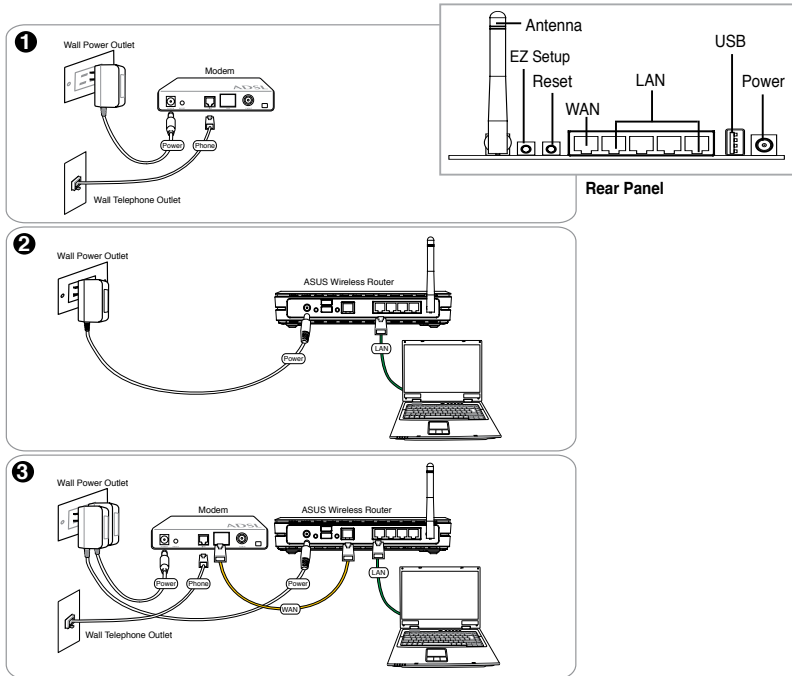
Network standard	IEEE 802.11b, IEEE 802.11g, IEEE 802.3, IEEE802.3x, IEEE 802.3u, IEEE 802.1x, IEEE 802.11i, IPv4, IPv6, CSMA/CA, CSMA/CD, ICMP	
Operating frequency	2.4G ~ 2.5GHz	
Date rate	802.11g: 6, 9, 12, 18, 24, 36, 48, 54Mbps 802.11b: 1, 2, 5.5, 11Mbps	
Operational channel	11 for N. America, 14 Japan, 13 Europe (ETSI)	
Port	WAN x 1, LAN x 4 RJ45 for 10/100 BaseT, 1 x USB2.0 for printer sharing(WL-520GU only)	
Antenna	Support Antenna Diversity, 1 x Reverse-SMA antenna connector	
EZSeup Button	Automatically SSID and WEP or WPA configuration	
Power Supply *	WL-520GU : DC: +5V with max. 2A current WL-520GC : DC EU/UK: +9V/1A; TW/US: +9V/800mA	
Security	WEP-64bits, WEP-128bits, WPA-Personal, WPA2-Personal, WPA-Auto-Personal (TKIP, AES, TKIP+AES), WPA-Enterprise, WPA2-Enterprise, WPA-Auto-Enterprise (TKIP, AES, TKIP+AES), Radius with 802.1x	
Access Control	MAC-level Access Control, Inbound/Outbound IP Filter, Domain Access Control	
Firewall	NAT Firewall, SPI (Stateful Package Inspection) Firewall, WAN ping control	
Quality of Service	BOD (WL-520GU only), WMM	
Network Management	Support UPnP, DHCP Server, DNS Proxy, NTP Client, DDNS, Port Trigger, Virtual Server, Virtual DMZ, VPN Pass-Through	
Temperature	Operating : 0~40°C	Storage : -30~50°C
Humidity	Operating : 50~90%	Storage : 20~90%

* Use only the adapter included in the package.



3. Connecting Wireless Router to Cable/DSL/Satellite Modem

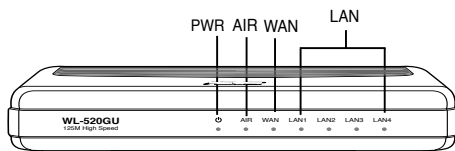
1) Cable connection



Note: Use only the adapter included in the package. Using other adapters may damage the device.



2) Status indicators



PWR (Power)

Off	No power
On	System ready
Flashing-slow	Firmware upgrade failed
Flashing-quick	EZsetup processing

AIR (Wireless Network)

Off	No power
On	Wireless system ready
Flashing	Transmitting or receiving data (wireless)

WAN (Wide Area Network)

Off	No power or no physical connection
On	Has physical connection to an Ethernet network
Flashing	Transmitting or receiving data (through Ethernet cable)

LAN 1-4 (Local Area Network)

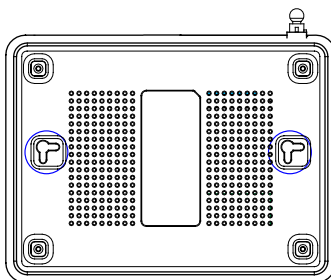
Off	No power or no physical connection
On	Has physical connection to an Ethernet network
Flashing	Transmitting or receiving data (through Ethernet cable)

3) Mounting options

Out of the box, the ASUS WL-520GU/GC Broad Range Wireless Router is designed to sit on a raised flat surface like a file cabinet or a book shelf. The unit may also be converted for mounting to a wall or ceiling.

To mount the ASUS WL-520GU/GC

- 1 Look on the underside for the two mounting hooks.
- 2 Mark two upper holes on a wall or on a raised flat surface.
- 3 Tighten two screws until only 1/4" is showing.
- 4 Latch the hooks of the ASUS WL520GU/GC onto the screws.



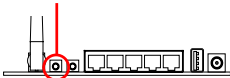
Note: Re-adjust the screws if you cannot latch the ASUS Wireless Router onto the screws or if it is too loose.



4. EZ Setup

The EZSetup utility enables you to easily complete the wireless LAN setup in just two steps. First, launch the **EZSetup** from the **Start** menu, then push the EZSetup button, located at the rear panel, for three seconds.

- 1 Push **EZSetup** over 3 sec. and release.



1) If the setup button is pushed without running the EZsetup wizard utility, the PWR indicator will flash and Internet connections will pause for a short period but will then return to normal operation without change.

2) To use EZSetup, we recommend using an ASUS wireless adapter such as WL-106gM, WL-100gE, and WL-169gE.



Insert the Utility CD into your PC's CD drive, and run **Install ASUS Wireless Router Utilities**.

After installing the ASUS Wireless Router Utilities, run the EZSetup Wizard from **[Startup] -> All Utilities [ASUS Utility] -> [WL-520GU/GC Wireless Router]**.

Note: Use EZSetup Wizard with one wireless client at a time. If the wireless client computer cannot discover the wireless router while in EZSetup mode, shorten the distance between the client and the router.



Wireless settings, including network name and network keys, are generated automatically. You can modify these settings manually. Note if your wireless router is configured before, select **Preserve original wireless router settings** to use the current value. Click **Next** to continue.



If you need to configure the ISP settings for your wireless router, select **Configure ISP settings**, click **Next** and follow the instructions to complete the settings.



Setup is completed. Press **Print/Save Wireless LAN Settings** button for future reference. Click **Finish** to exit the EZSetup utility.



1. 包裝內容

- WL-520GU/GC 無線路由器 x 1
- 電源變壓器 x 1
- 公用程式光碟 x 1
- RJ45 纜線 x 1
- 快速使用指南 x 1

2. 規格概要

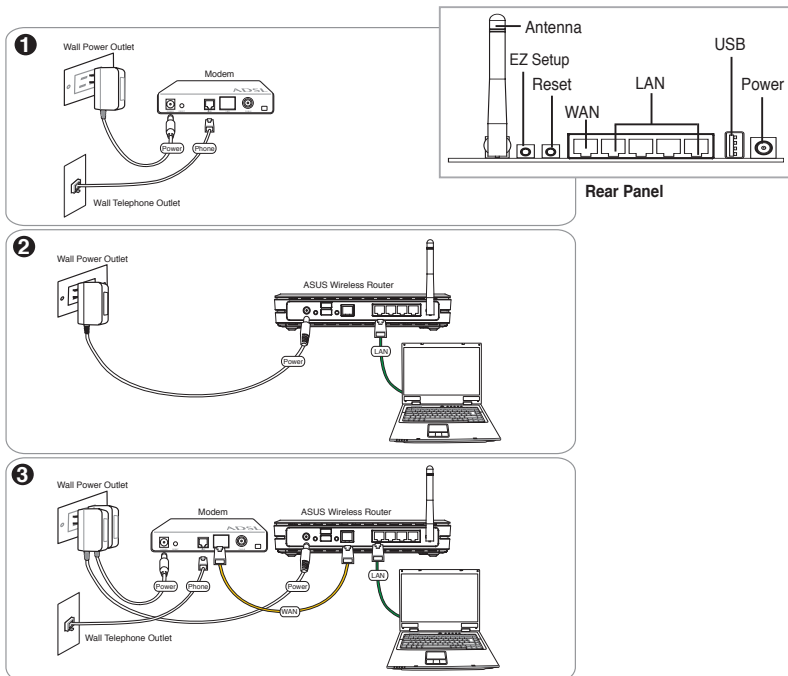
網路標準	IEEE 802.11b, IEEE 802.11g, IEEE 802.3, IEEE802.3x, IEEE 802.3u, IEEE 802.1x, IEEE 802.11i, IPv4, IPv6, CSMA/CA, CSMA/CD, ICMP
運作頻率	2.4G ~ 2.5GHz
資料傳輸速率	802.11g: 6, 9, 12, 18, 24, 36, 48, 54Mbps 802.11b: 1, 2, 5.5, 11Mbps
運作頻道	美國：11, 日本：14, 歐洲：13 (ETSI)
連接埠	WAN x 1, LAN x 4 RJ45 10/100 BaseT, 1 x USB2.0 用於印表機分享 (僅 WL-520GU)
天線	支援天線分集 1 x Reverse-SMA 天線連接器
EZSetup 按鈕	自動 SSID 與 WEP 或 WPA 設定
電源 *	WL-520GU: DC: +5V 最大電流 2A WL-520GC: DC EU/UK: +9V/1A ; TW/US: +9V/800mA
安全性	WEP-64bits, WEP-128bits, WPA-Personal, WPA2-Personal, WPA-Auto-Personal (TKIP, AES, TKIP+AES), WPA-Enterprise, WPA2-Enterprise, WPA-Auto-Enterprise (TKIP, AES, TKIP+AES), Radius with 802.1x
存取控制	MAC 級存取控制, 入埠 / 出埠 IP 過濾,
防火牆	NAT 防火牆, SPI (Stateful Package Inspection, 狀態封包檢查) 防火牆, WAN ping 控制
服務等級 (QoS)	BOD (僅 WL-520GU), WMM
網路管理	支援 UPnP, DHCP 伺服器, DNS Proxy, NTP Client, DDNS, 連接埠觸發, 虛擬伺服器, 虛擬 DMZ, VPN Pass-Through
溫度	運作: 0~40°C 存放: -30~50°C
溼度	運作: 50~90% 存放: 20~90%

* 僅可使用產品包裝中所含的電源變壓器。



3. 連接無線路由器至 Cable/DSL/Satellite 數據機

1) 纜線連接

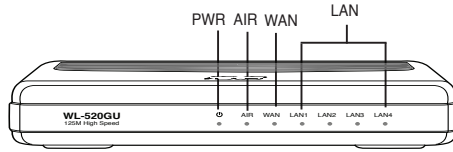


繁體中文

注意: 僅可使用產品包裝中所含的電源變壓器, 使用其他變壓器可能會導致裝置損毀。



2) 狀態指示燈



PWR (電源)

熄滅	未連接電源
恆亮	系統已就緒
緩慢閃爍	韌體更新失敗
快速閃爍	EZsetup 執行中

AIR (無線網路)

熄滅	未連接電源
恆亮	無線系統已就緒
閃爍	正在傳送或接收資料 (無線)

WAN (廣域網路)

熄滅	未連接電源或未建立實體連接
恆亮	已建立實體連接至乙太網路
閃爍	正在傳送或接收資料 (透過乙太網路線)

LAN 1-4 (區域網路)

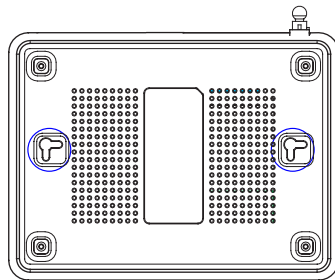
熄滅	未連接電源或未建立實體連接
恆亮	已建立實體連接至乙太網路
閃爍	正在傳送或接收資料 (透過乙太網路線)

3) 安裝選項

華碩 WL-520GU/GC Broad Range 無線路由器可放置於平坦的表面，如文件櫃或書架上。您也可以將路由器安裝在牆上或天花板上。

安裝華碩 WL-520GU/GC

1. 找到裝置背面的兩個安裝溝槽。
2. 在牆上或欲安裝路由器的物體表面需要擰螺絲的兩個位置畫上標記。
3. 擰入兩顆螺絲，直到螺絲露出 1/4"。
4. 將華碩 WL520GU/GC 的壁掛溝槽對準牆上的螺絲，並將螺絲嵌入溝槽中。



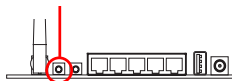
注意：若您無法將華碩無線路由器掛到螺絲上，請調整螺絲之間的距離，並檢查螺絲是否太鬆。



4. EZSetup

EZSetup 程式可讓您兩步輕鬆完成無線區域網路的設定。首先，從 **開始** 功能表中開啟 EZSetup 程式，接著按下位於機器後方的 EZSetup 按鈕三秒鐘。

- 1** 按下 EZSetup 按鈕三秒鐘以上，然後鬆開



- 若您按下 EZSetup 按鈕而沒有執行 EZSetup 安裝精靈，電源 (PWR) 指示燈將會閃爍，且網際網路連接將會中斷一小段時間，但是無需做任何更改，稍後即會回復正常。
- 使用 EZSetup 時，我們建議您使用華碩無線網路卡，如 WL-106gM、WL-100gE 或 WL-169gE。

2



將公用程式光碟放入電腦的光驅，接著點選 Install ASUS Wireless Router Utilities (安裝華碩無線路由器公用程式)。

安裝完畢後，點選 **開始** -> **所有程式** -> **ASUS Utility** -> **WL-520GU/GC Wireless Router** 來執行 EZSetup 安裝精靈程式。



注意：每次僅使用 EZSetup 安裝精靈來設定一個無線用戶端。若無線用戶端電腦在 EZSetup 模式下無法搜尋到無線路由器，請縮短用戶端與路由器之間的距離。

3



無線設定，包括網路名稱與網路金鑰，都是自動產生的。您可以手動更改這些設定，不可以輸入中文。如果勾選下方 **使用 WPA 加密方式**，請輸入 8~63 個字元做為您的網路金鑰。



注意：設定第二台電腦時，請勾選 **保留無線路由器原有設定值**。點選 **下一步** 繼續。



若您需要為無線路由器進行網際網路服務提供者 (ISP) 設定，請勾選 網際網路服務提供者 資訊設定，點選 下一步。



以常見的 ADSL 為例，請點選第二個選項 ADSL 連線，此連線需要提供使用者名稱和密碼，亦即俗稱的 PPPoE，接著點選 下一步。



以中華電信為例，帳號後端請加 @hinet.net。



設定完成！按下 列印 / 儲存無線區域網路設定 按鈕即可列印 / 儲存設定以供日後參考。點選 完成 離開 EZSetup 程式。

注意事項

當您購買本產品後，為保障購買人權益，請於購買後壹個月內務必上網填寫完整個人資料及產品資訊並完成註冊手續。

1. 請您先透過網路註冊加入華碩會員，再進行產品登錄之作業 (網址：<http://member.asus.com>)。
2. 妥善保留購買當時之發票或是發票憑證 (影本亦可) 經銷商之售貨單據 (加蓋經銷商店章始生效力)，於機台故障送修時出示，始享有保固服務之權益；若不慎遺失相關證明單據且於購買華碩無線網路產品壹個月內，未上網進行註冊，本公司將以華碩「出貨日」為保固起始日期。
3. 無論在任何情況下，您都不可以自行拆解修理本機，這將導致本機的保固作廢。

註冊步驟

註冊網址：<http://member.asus.com>

- 步驟 1：加入會員 (如已是會員，請跳到步驟 5，直接「登入會員」可註冊新購買的產品)
- 步驟 2：個人資料填寫完成後按「同意並且繼續」
- 步驟 3：註冊系統將會發送啟用帳號的「確認碼」認證信件
- 步驟 4：請依據確認碼信件指示進行帳號認證，以確保您會員權益
- 步驟 5：選擇產品註冊，填寫完整的產品資訊即可完成註冊



1. 包装内容

- WL-520GU/GC 无线路由器 x 1
- 电源适配器 x 1
- 应用程序光盘 x 1
- RJ45 线缆 x 1
- 快速使用指南 x 1

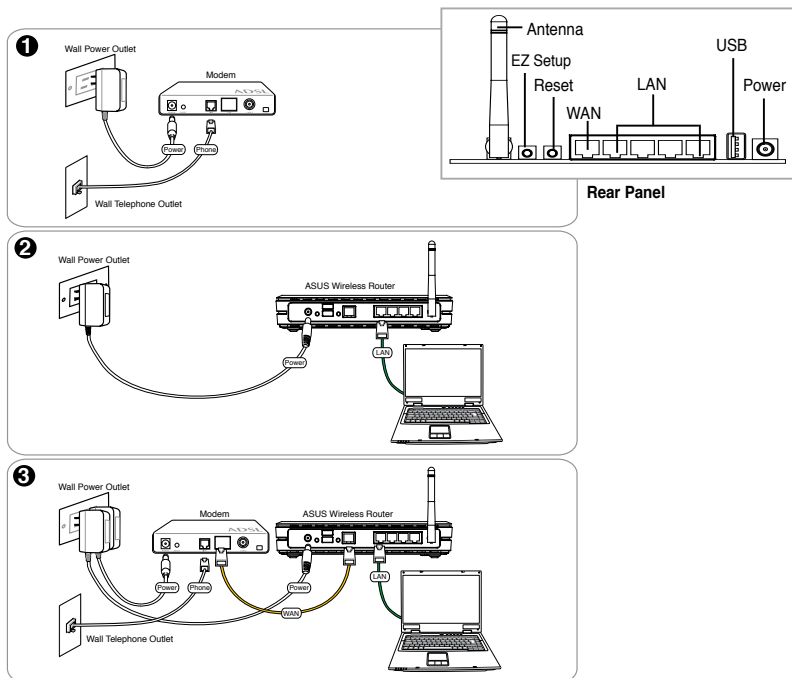
2. 规格概要


网络标准	IEEE 802.11b, IEEE 802.11g, IEEE 802.3, IEEE802.3x, IEEE 802.3u, IEEE 802.1x, IEEE 802.11i, IPv4, IPv6, CSMA/CA, CSMA/CD, ICMP
工作频率	2.4G ~ 2.5GHz
数据传输速率	802.11g: 6, 9, 12, 18, 24, 36, 48, 54Mbps 802.11b: 1, 2, 5.5, 11Mbps
工作频道	美国: 11, 日本: 14, 欧洲: 13 (ETSI)
端口	WAN x 1, LAN x 4 RJ45 10/100 BaseT, 1 x USB2.0 用于打印机共享 (仅 WL-520GU)
天线	支持多种天线 1 x Reverse-SMA 天线连接器
EZSetup 按钮	自动 SSID 与 WEP 或 WPA 设置
电源 *	WL-520GU: DC: +5V 最大电流 2A WL-520GC: DC EU/UK: +9V/1A, TW/US: +9V/800mA
安全性	WEP-64bits, WEP-128bits, WPA-Personal, WPA2-Personal, WPA-Auto-Personal (TKIP, AES, TKIP+AES), WPA-Enterprise, WPA2-Enterprise, WPA-Auto-Enterprise (TKIP, AES, TKIP+AES), Radius with 802.1x
访问控制	MAC 级访问控制, 入站/出站 IP 过滤
防火墙	NAT 防火墙, SPI (Stateful Package Inspection, 状态封包检查) 防火墙, WAN ping 控制
服务质量 (QoS)	BOD (仅 WL-520GU), WMM
网络管理	支持 UPnP, DHCP 服务器, DNS Proxy, NTP Client, DDNS, 端口触发, 虚拟服务器, 虚拟 DMZ, VPN Pass-Through
温度	运行: 0~40°C 存放: -30~50°C
湿度	运行: 50~90% 存放: 20~90%

* 仅可使用产品包装中所含的电源适配器。

3. 连接无线路由器至 Cable/DSL/Satellite 调制解调器

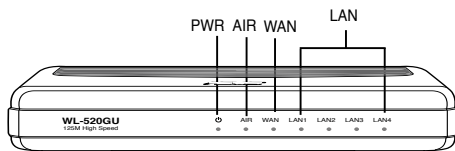
1) 线缆连接



 注意: 仅可使用产品包装中所含的电源适配器, 使用其他适配器可能会导致设备损毁。



2) 状态指示灯



PWR (电源)

熄灭	未连接电源
恒亮	系统已就绪
缓慢闪烁	固件升级失败
快速闪烁	EZsetup 运行中

AIR (无线网络)

熄灭	未连接电源
恒亮	无线系统已就绪
闪烁	正在传送或接收数据 (无线)

WAN (广域网)

熄灭	未连接电源或未建立物理连接
恒亮	已建立物理连接至以太网
闪烁	正在传送或接收数据 (通过以太网线)

LAN 1-4 (局域网)

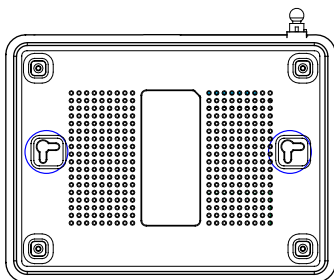
熄灭	未连接电源或未建立物理连接
恒亮	已建立物理连接至以太网
闪烁	正在传送或接收数据 (通过以太网线)

3) 安装选项

华硕 WL-520GU/GC Broad Range 无线路由器可放置于平坦的表面，如文件柜或书架上。您也可以将路由器安装在墙上或天花板上。

安装华硕 WL-520GU/GC

1. 找到设备背面的两个安装沟槽。
2. 在墙上或欲安装路由器的物体表面需要拧螺丝的两个位置画上标记。
3. 拧入两颗螺丝，直到螺丝露出 1/4"。
4. 将华硕 WL520GU/GC 的壁挂沟槽对准墙上的螺丝，并将螺丝嵌入沟槽中。

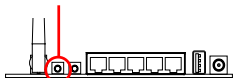


注意：若您无法将华硕无线路由器挂到螺丝上，请调整螺丝之间的距离，并检查螺丝是否太松。

4. EZSetup

EZSetup 程序可让您两步轻松完成无线局域网的设置。首先，从 **开始** 菜单中开启 EZSetup 程序，接着按下位于设备后面的 EZSetup 按钮三秒钟。

- 1 按下 EZSetup 按钮三秒钟以上，然后松开



- 1) 若您按下 EZSetup 按钮而没有执行 EZSetup 安装向导，电源 (PWR) 指示灯将会闪烁，且互联网连接将会中断一小段时间，但是无需做任何更改，稍后即会恢复正常。
- 2) 使用 EZSetup 时，我们建议您使用华硕无线网卡，如 WL-106gM，WL-100gE 或 WL-169gE。



将应用程序光盘放入电脑的光驱，接着点击 Install ASUS Wireless Router Utilities (安装华硕无线路由器应用程序)。

安装完毕后，点击 **开始** -> **所有程序** -> **ASUS Utility** -> **WL-520GU/GC Wireless Router** 来运行 EZSetup 安装向导程序。

注意： 每次仅使用 EZSetup 安装向导来设置一个无线客户端。若无线客户端电脑在 EZSetup 模式下无法搜索到无线路由器，请缩短客户端与路由器之间的距离。



无线局域网连接设置，包括网络名称 (SSID) 与网络密钥，都是自动产生的。您可以手动更改这些设置。注意：若您之前曾经设置过此路由器，请选择 **保持初始的无线设置** 以使用原先的设置。点击 **下一步 继续**。



若您需要为无线路由器进行 ISP 设置，请勾选 **配置 ISP 设置**，点击 **下一步** 并依照提示完成设置。



设置完成！按下 **打印或保存无线局域网设置** 按钮即可打印或保存设置以供日后参考。点击 **完成** 退出 EZSetup 程序。



1. 패키지 구성물

- WL-520GU/GC 무선 라우터 x 1
- 전원 어댑터 x 1
- 유틸리티 CD x 1
- RJ45 케이블 x 1
- 빠른 설치 가이드 x 1

2. 제품 사양 요약

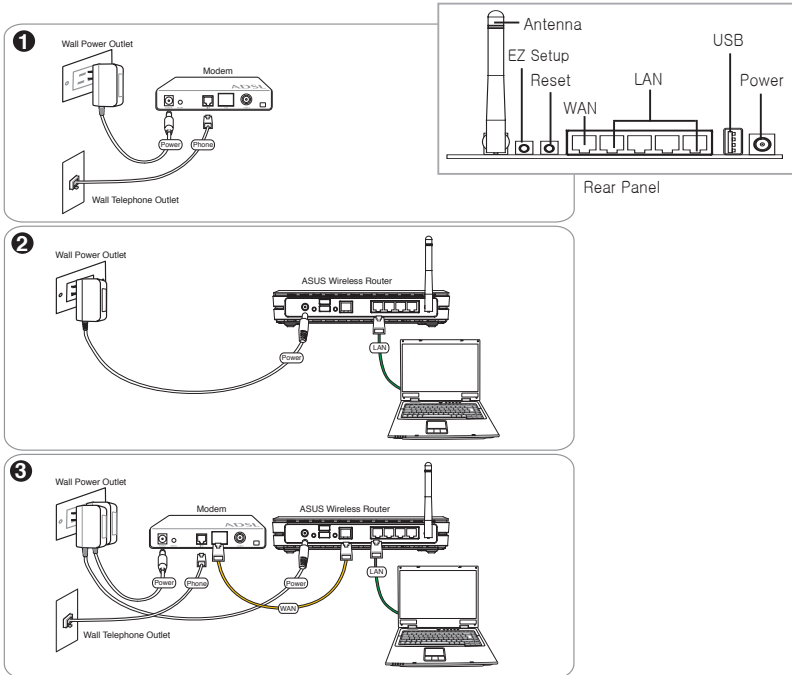
네트워크 표준	IEEE 802.11b, IEEE 802.11g, IEEE 802.3, IEEE802.3x, IEEE 802.3u, IEEE 802.1x, IEEE 802.11i, IPv4, IPv6, CSMA/CA, CSMA/CD, ICMP	
운영 주파수	2.4G ~ 2.5GHz	
데이터 비율	802.11g: 6, 9, 12, 18, 24, 36, 48, 54Mbps 802.11b: 1, 2, 5.5, 11Mbps	
운영 채널	북미 11, 일본 14, 유럽 (ETSI) 13	
포트	WAN x 1, 10/100 BaseT용 LAN x 4 RJ45, 프린터 공유를 위한 1 x USB2.0 (WL-520GU only)	
안테나	다방향 안테나 지원, 1 x Reverse-SMA 안테나 커넥터	
EZSetup 버튼	자동으로 SSID & WEP 또는 WPA 구성	
전원 공급 *	WL-520GU: DC: +5V / 최대 2A 전력 WL-520GC: DC EU/UK: +9V/1A; TW/US: +9V/800mA	
보안	WEP-64bits, WEP-128bits, WPA-Personal, WPA2-Personal, WPA-Auto-Personal (TKIP, AES, TKIP+AES), WPA-Enterprise, WPA2-Enterprise, WPA-Auto-Enterprise (TKIP, AES, TKIP+AES), Radius with 802.1x	
접속 제어	MAC-level 접속 제어, 인바운드/아웃바운드 IP 필터, 도메인 접속 제어	
방화벽	NAT 방화벽, SPI (Stateful Package Inspection) 방화벽, WAN ping 제어	
서비스 품질	BOD (WL-520GU only), WMM	
네트워크 관리	UPnP, DHCP 서버, DNS 프록시, NTP 클라이언트, DDNS, 포트 트리거, 가상 서버, 가상 DMZ, VPN Pass-Through 지원	
온도	운영: 0~40°C	보관: -30~50°C
습도	운영: 50~90%	보관: 20~90%

* 패키지에 포함되어 있던 어댑터만 사용해 주십시오.



3. 케이블 /DSL/ 위성 모뎀에 무선 라우터 연결

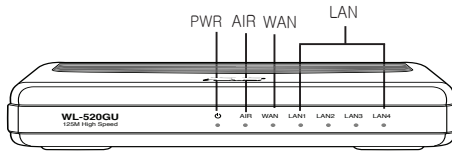
1) 케이블 연결



참고 : 패키지에 포함되어 있던 어댑터만 사용해 주십시오 . 기타 다른 어댑터를 사용하면 장치가 손상될 수 있습니다 .



2) 상태 표시등



PWR (전원)

꺼짐	전원이 들어오지 않음
켜짐	시스템 작동 준비 완료
깜박거림 - 느림	펌웨어 업그레이드 실패
깜박거림 - 빠름	EZsetup 진행 중

AIR (무선 네트워크)

꺼짐	전원이 들어오지 않음
켜짐	무선 시스템 작동 준비 완료
깜박거림	데이터 송수신 중 (무선)

WAN (넓은 영역 네트워크)

꺼짐	전원이 들어오지 않음 / 연결되지 않음
켜짐	이더넷 네트워크에 연결 됨
깜박거림	데이터 송수신 중 (이더넷 케이블 사용)

LAN 1-4 (로컬 영역 네트워크)

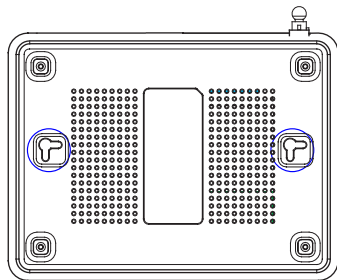
꺼짐	전원이 들어오지 않음 / 연결되지 않음
켜짐	이더넷 네트워크에 연결 됨
깜박거림	데이터 송수신 중 (이더넷 케이블 사용)

3) 설치 옵션

ASUS WL-520GU/GC 장거리 영역 무선 라우터는 캐비닛 또는 선반같이 평평한 곳에 놓고 사용할 수 있도록 설계되어 있습니다. 뿐만 아니라 벽이나 천장에 설치해 사용할 수도 있습니다.

ASUS WL-520GU/GC 설치 방법

1. 라우터 하판에 있는 2 개의 설치 구멍을 확인해 주십시오.
2. 벽 또는 평평한 곳에 구멍 위치를 표시를 해주십시오.
3. 나사가 1/4" 정도만 보일 정도로 벽에 설치해 주십시오.
4. ASUS WL520GU/GC 무선 라우터를 나사에 걸쳐 주십시오.



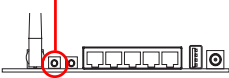
참고 : ASUS 무선 라우터가 나사에 걸리지 않거나 너무 헐렁하게 걸려 있으면 나사의 위치를 조정해 주십시오.



4. EZSetup

EZSetup 유틸리티는 쉽고 간편하게 무선 LAN 설정을 할 수 있도록 도와줍니다. 시작 메뉴에서 **EZSetup**를 실행한 후, 후면부 쪽에 위치한 EZSetup 버튼을 약 3초간 눌러주십시오.

- 1) EZSetup 버튼을 3초간 누른 후, 떼어 주십시오.



1) 만약 EZSetup 마법사 유틸리티가 실행되지 않은 상태에서 셋업 버튼을 눌렀다면, PWR 표시등이 깜박이고 인터넷 연결이 잠시 중단됩니다. 하지만 곧 다시 정상적으로 작동할 것입니다.

2) EZSetup 이용 시, WL-106gM, WL-100gE, 그리고 WL-169gE 와 같은 ASUS 무선 어댑터를 사용하시길 권장합니다.



유틸리티 CD를 CD 드라이브에 넣은 후, ASUS 무선 라우터 유틸리티 설치를 실행해 주십시오.

ASUS 무선 라우터 유틸리티 설치 이후, [시작] -> 모든 유틸리티 [ASUS 유틸리티] -> [WL-520GU/GC 무선 라우터]를 통해 EZSetup 마법사를 실행해 주십시오.

참고: EZSetup 마법사 사용 시, 한번에 하나의 무선 클라이언트를 사용해 주십시오. 만약 무선 클라이언트 컴퓨터가 EZSetup 모드에서 무선 라우터를 발견하지 못한다면, 클라이언트와 라우터 사이를 좁혀 주십시오.



네트워크 이름과 네트워크 키를 포함한 무선 설정은 자동으로 생성됩니다. 이러한 설정은 수동으로 수정할 수 있습니다. 참고: 만약 무선 라우터가 이미 구성되어 있다면, 기존 무선 라우터 설정을 유지를 선택하여 현재 값을 사용할 수 있습니다. 다음 버튼을 클릭하여 계속해 주십시오.



4



무선 라우터의 ISP 설정을 구성하려면, **ISP 설정 구성**을 선택하고 **다음** 버튼을 클릭한 후, 지시사항을 따라 설정을 완료하십시오.

5



구성을 완료하였습니다. 보관 자료로 **무선 LAN 설정 인쇄/저장** 버튼을 클릭하여 설정 정보를 보관해 주십시오. 완료 버튼을 클릭하면 EZSetup 유틸리티가 종료됩니다.



1. パッケージの内容

- ・WL-520GU/GC 無線ルータ× 1
- ・電源アダプター× 1
- ・ユーティリティ CD× 1
- ・RJ45 ケーブル× 1
- ・クイックスタートガイド× 1

2. 仕様一覧

ネットワーク標準	IEEE 802.11b、IEEE 802.11g、IEEE 802.3、IEEE802.3x、IEEE 802.3u、IEEE 802.1x、IEEE 802.11i、IPv4、IPv6、CSMA/CA、CSMA/CD、ICMP
周波数帯	2.4G ~ 2.5GHz
データ転送速度	802.11g: 6、9、12、18、24、36、48、54Mbps 802.11b: 1、2、5.5、11Mbps
オペレーションチャンネル	日本:14、北米:11、欧州 (ETSI):13
ポート	WAN × 1、RJ45 LAN × 4 (10/100 BaseT用)、USB2.0 × 1 (プリンタ共有用: WL-520GU のみ)
アンテナ	アンテナダイバーシティ対応、リバースSMA アンテナコネクタ × 1
EZSetup ボタン	SSID/WEP/WPA 自動設定
電源 *	WL-520GU : DC: +5V、最大 2 A WL-520GC : DC EU/UK: +9V/1A; TW/US: +9V/800mA
セキュリティ	WEP-64bits、WEP-128bits、WPA-Personal、WPA2-Personal、WPA-Auto-Personal (TKIP、AES、TKIP+AES)、WPA-Enterprise、WPA2-Enterprise、WPA-Auto-Enterprise (TKIP、AES、TKIP+AES)、Radius with 802.1x
アクセスコントロール	MACレベルアクセスコントロール、着信/発信 IP フィルタ、ドメインアクセスコントロール
ファイアウォール	NAT ファイアウォール、WAN ping コントロール、SPI (Stateful Package Inspection) ファイアウォール
QoS	BOD (WL-520GU のみ)、WMM
ネットワーク管理	サポート規格: UPnP、DHCP サーバ、DNS プロキシ、NTP クライアント、DDNS、ポートトリガー、バーチャルサーバ、バーチャル DMZ、VPN パススルー
温度	動作温度範囲: 0 ~ 40°C 保管温度範囲: -30 ~ 50°C
湿度	動作湿度範囲: 50 ~ 90% 保管湿度範囲: 20 ~ 90%

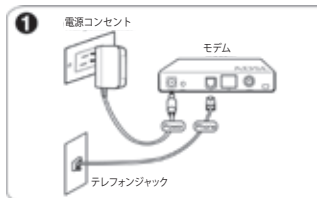
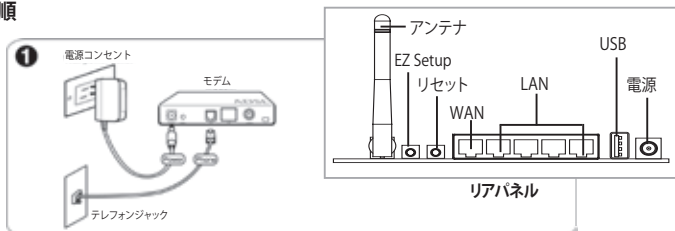
* アダプターは本ルータに付属のものを必ず使用してください。



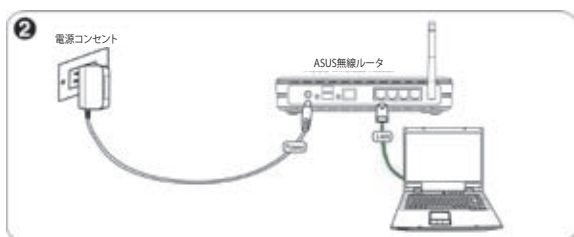
3. ルータをケーブル /DSL/ サテライトモデムに接続する

1) ケーブル 接続

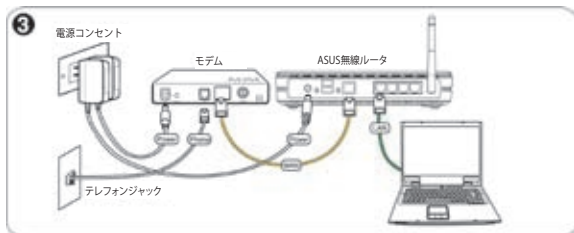
手順



1. モデムに電源と電話線を接続します。



2. ASUS無線ルータとPC、そして専用のACアダプターを接続します。



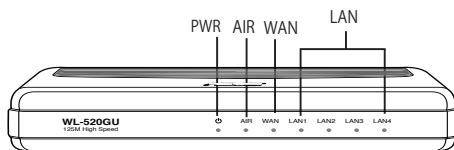
3. モデムと無線ルータを付属のLANケーブルで接続します。ルータのWANソケットとモデムのLANソケットを接続してください。



注：アダプターは本ルータに付属のものを必ず使用してください。それ以外を使用すると、故障の原因となります。



2) ステータスインジケータ



PWR (電源)

オフ	電源オフ
オン	電源オン
点滅 (低速)	ファームウェアの更新に失敗
点滅 (高速)	EZSetup が動作中

AIR (無線ネットワーク)

オフ	電源オフ
オン	無線システム使用可能
点滅	データ送受信中 (無線)

WAN (ワイドエリアネットワーク)

オフ	電源オフ、または物理接続なし
オン	イーサネットネットワークに物理接続が確立
点滅	データ送受信中 (イーサネットケーブル経由)

LAN 1-4 (ローカルエリアネットワーク)

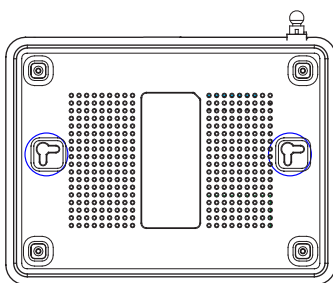
オフ	電源オフ、または物理接続なし
オン	イーサネットネットワークに物理接続が確立
点滅	データ送受信中 (イーサネットケーブル経由)

3) ウォールマウントオプション

本ルータは水平面はもちろん、壁面やキャビネット等の垂直面にも設置可能です。

設置手順 (垂直面)

1. 本ルータ底部のマウントフック (×2) の位置を確認します。
2. 設置面にネジ穴を2つ開けます。
3. ネジの3/4が見えなくなるよう、2本のネジを設置面に取り付けます。
4. 本ルータのフックをネジに掛けます。



注：フックがネジにしっかり固定されるよう設置してください。



4. EZSetup ユーティリティ

EZSetup ユーティリティは無線 LAN セットアップツールで、使いやすいのが特長です。スタートメニューから **EZSetup** を起動し、本ルータのリアパネルにある EZSetup ボタンを 3 秒間押します。

- ① EZSetup ボタンを 3 秒間押す



- 1) EZSetup ユーティリティを起動せずに EZSetup ボタンを押すと、PWR インジケータが点滅しインターネット接続が一時的に切断されますが、その後は通常の動作状態に戻ります。
- 2) EZSetup を使用する場合は、ASUS 製の無線アダプターのご利用をお勧めします。(WL-106gM、WL-100gE、and WL-169gE 等)



ユーティリティ CD を PC の光学ドライブに挿入し、「Install ASUS Wireless Router Utilities」を選択します。

ASUS Wireless Router Utilities のインストールが終了したら、「スタート」→「全てのプログラム」→「ASUS Utility」→「WL-520GU/GC Wireless Router」の順にクリックし、EZSetup Wizard を起動します。

注：EZSetup Wizard では無線クライアントが必要です。EZSetup で無線クライアントのコンピュータが本ルータを認識しない場合は、クライアントとルータの距離を短くしてください。



ネットワーク名やネットワークキー等の無線設定は自動的に設定されます。変更の際は手動で変更します。本ルータを以前設定した場合は、「オリジナルの無線ルータ設定を保存する」を選択し、その設定を使用することができます。次に進むには「次へ」をクリックします。



本ルータ用に ISP (インターネット・サービス・プロバイダ) を設定する場合は、「ISP を設定する」を選択し、「次へ」をクリックします。その後はウィザードの指示に沿って設定を完了させてください。



セットアップ終了です。「無線 LAN 設定をプリント/保存」を押し、設定内容を保存してください。保存したら「終了」を押しユーティリティを閉じます。