



## Index

<b>1. Package Contents .....</b>	<b>3</b>
<b>2. Connecting ADSL Modem and Wireless Router .....</b>	<b>5</b>
1) Cable Connection .....	5
2) Status Indicators .....	6
<b>3. Clients Setup:</b>	
<b>Example: Installing WL-167g USB WLAN Adapter ....</b>	<b>7</b>
<b>4. Router and Client Wireless Connection Setup .....</b>	<b>11</b>
1) Utility Installation for WL-520g .....	11
2) EZSetup (default) .....	14
3) EZSetup (customized) .....	17
<b>5. Configuring the Wireless Router .....</b>	<b>20</b>
1) Connecting the ASUS Wireless Router .....	20
2) Setting IP address for Wired and Wireless Connection .....	21
3) Configuring the Wireless Router .....	23
<b>6. Commonly Used Features .....</b>	<b>24</b>
1) How to Setup Encryption .....	24
2) Setting up a Server in Your LAN .....	27
3) Setting up Switching Hub & Pure AP (not IP Share NAT) .....	28



## Index

4) Setting up Netmeeting, MSN, Online Gaming and Remote Control Program .....	29
5) Setting up DDNS .....	31
6) Setting up WDS .....	35
<b>7. Trouble Shooting .....</b>	<b>36</b>
<b>8. Appendix .....</b>	<b>40</b>



## 1. Package Contents

- WL-520g wireless router\*1
- Power adaptor\*1
- External antenna\*1
- Driver and Utility CD\*1
- RJ45 cable\*1
- Quick Start Guide\*1



## Manufacturer Contact Information

### ASUSTeK COMPUTER INC. (Asia-Pacific)

Company address: 15 Li-Te Road, Beitou, Taipei 11259

General (tel): +886-2-2894-3447      Web site address: [www.asus.com.tw](http://www.asus.com.tw)

General (fax): +886-2-2894-7798      General email: [info@asus.com.tw](mailto:info@asus.com.tw)

### ASUS COMPUTER INTERNATIONAL (America)

Company address: 44370 Nobel Drive, Fremont, CA 94538, USA

General (fax): +1-510-608-4555      Web site address: [usa.asus.com](http://usa.asus.com)

### Technical support

General support: +1-502-995-0883      Support (fax): +1-502-933-8713

Online support: <http://vip.asus.com/eservice/techserv.aspx>

### ASUS COMPUTER GmbH (Germany & Austria)

Company address: Harkort Str. 25, D-40880 Ratingen, Germany

General (tel): +49-2102-95990      Web site address: [www.asuscom.de](http://www.asuscom.de)

General (fax): +49-2102-959911      Online contact: [www.asuscom.de/sales](http://www.asuscom.de/sales)

### Technical support

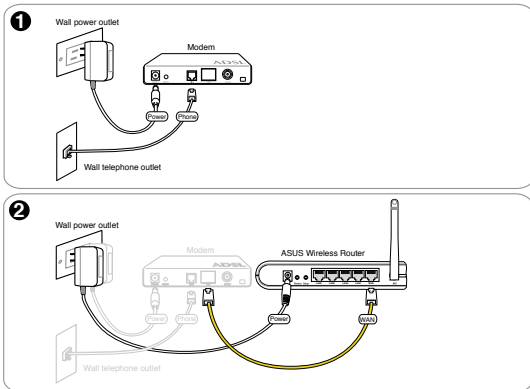
Components: +49-2102-95990      Online support: [www.asuscom.de/support](http://www.asuscom.de/support)

Notebook: +49-2102-959910      Support (fax): +49-2102-959911



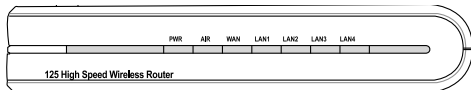
## 2. Connecting ADSL Modem and Wireless Router

### 1) Cable Connection





## 2) Status Indicators



### PWR (Power)

Off	No power
On	System ready
Flashing-slow	Firmware upgrade failed
Flashing-quick	EZsetup processing



**Note:** If the setup button is pushed without running the EZsetup wizard utility, the PWR indicator will flash and Internet connections will pause for a short period but will then return to normal operation without changes.

### AIR (Wireless Network)

Off	No power
On	Wireless system ready
Flashing	Transmitting or receiving data (wireless)

### WAN (Wide Area Network)

Off	No power or no physical connection
On	Has physical connection to an Ethernet network
Flashing	Transmitting or receiving data (through Ethernet wire)

### LAN 1-4 (Local Area Network)

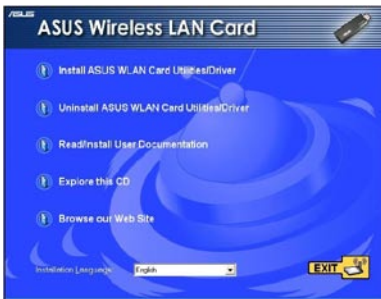
Off	No power or no physical connection
On	Has physical connection to an Ethernet network
Flashing	Transmitting or receiving data (through Ethernet wire)



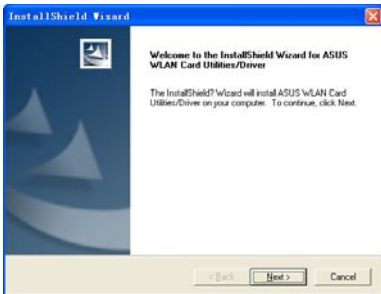
### 3. Client Setup:

#### Example: Installing WL-167g USB WLAN Adaptor

\* Caution: Before plugging the WL-167g into the USB port of your computer, please first insert the support CD to your CD drive and run the installations program of ASUS Wireless LAN Card Utilities .



1. Click the first line "Install ASUS WLAN Card Utilities/ Driver" to run the installation program.

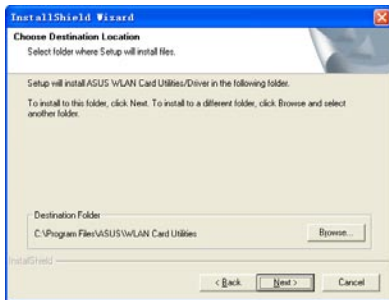


2. Click "Next" to continue.



### 3. Client Setup:(Cont.)

#### Example: Installing WL-167g USB WLAN Adaptor



3. Click "Next" to accept the designated location for files to be installed.



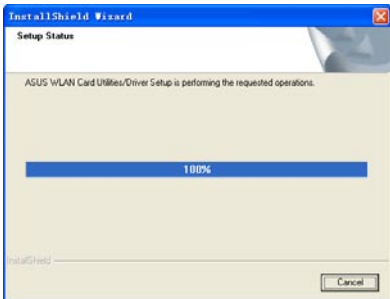
4. Please select a Program Folder and click "Next" to continue.



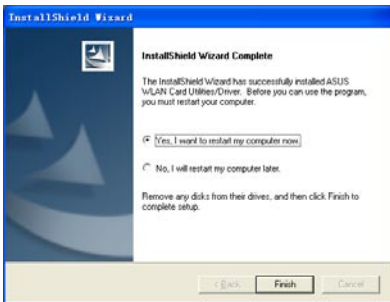


### 3. Client Setup:(Cont.)

#### Example: Installing WL-167g USB WLAN Adaptor



5. Installation is now in process, please wait for several seconds.



6. After completing the installation, a "Restart Computer" dialog box will appear. Connect WL-167g WLAN adaptor to USB port, then select "Yes" and press "Finish" to restart your computer.



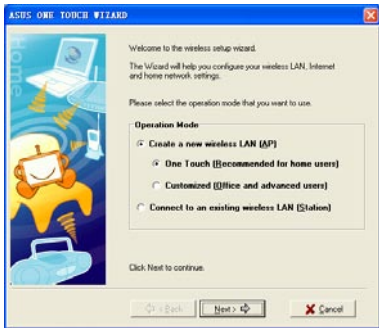
### 3. Client Setup:(Cont.)

#### Example: Installing WL-167g USB WLAN Adaptor

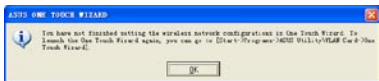
\*\*For Windows XP users, there are some more steps to click through.



7. After rebooting your Windows XP, a "Wireless Option" message box will appear. Please click "OK".



8. Then "ASUS ONE TOUCH WIZARD" will appear, please click "Cancel".



9. A warning box from "ASUS ONE TOUCH WIZARD" will appear. Please click "OK" to shut it down.



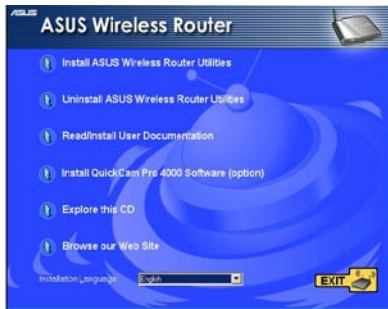
\* If wireless adaptor of other manufacturers is deployed, please comply with the setup guide of those companies.

\* When using Centrino notebook, please make sure that the internal wireless LAN is enabled.

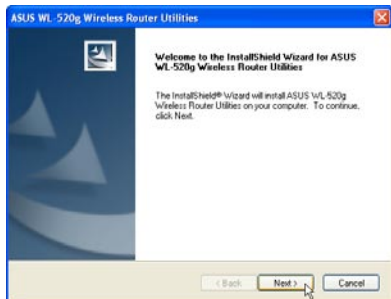


## 4. WL-520g (Router), WL-167g (Client) Wireless Connection Setup

### 1) Utility Installation for WL-520g



1. Click the first line "Install ASUS Wireless Router Utilities" to run the setup installation program.



2. Click "Next" to continue.

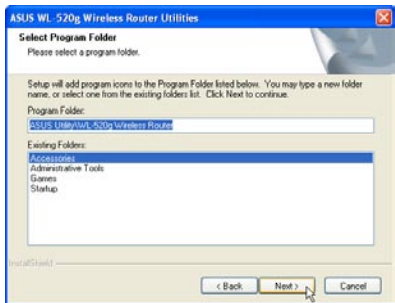


## 4. WL-520g (Router), WL-167g (Client) Wireless Connection Setup (Cont.)

### 1) Utility Installation for WL-520g (Cont.)



3. Click "Next" to confirm the designated location for installation.



4. Select a program folder and click "Next".

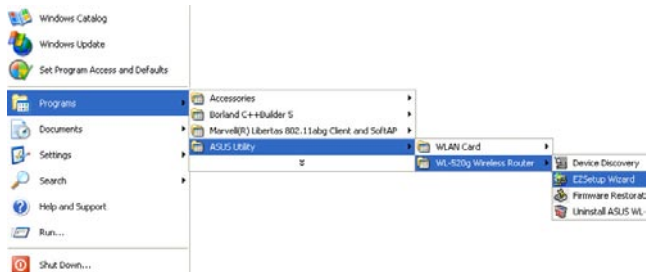


## 4. WL-520g (Router), WL-167g (Client) Wireless Connection Setup (Cont.)

### 1) Utility Installation for WL-520g (Cont.)



5. After completing installation, "Restart Computer" dialog box will appear. Select "Yes" and press "Finish" to restart your computer.



6. Open the "EZSetup Wizard".

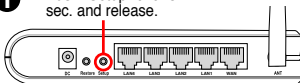


## 4. WL-520g (Router), WL-167g (Client) Wireless Connection Setup (Cont.)

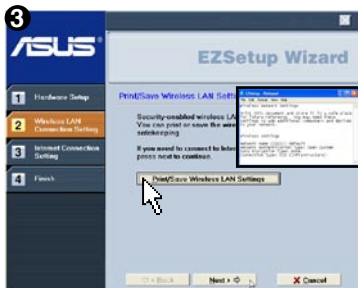
### 2) EZSetup (Default)

Wireless LAN setup will complete in two easy steps.

- 1** Push "Setup" over 3 sec. and release.



Click the EZSetup button in the utility.



Security-enabled wireless LAN environment is built now. You can print your key and your other network settings for your reference.

Wireless LAN setup is complete. Click **Next** to make Internet connection settings.



## 2) EZSetup (Default) (Cont.)



Choose the time zone where you are located in.



Select the connection type (Cable or ADSL) you use. (Example: Cable modem or other connection type that gets IP automatically)

Depending on the connection type you selected, you may require additional information from your ISP. Some fields are optional and may be left blank.



(ISP requirements depend on selection in the connection type.)



## 2) EZSetup (Default) (Cont.)

**7**

Depending on the service level you applied for with your ISP, your IP may be random (automatic) or fixed (enter manually).

Example 1: Cable Modem or other connection type that gets IP automatically.

Example 2: ADSL or other connection type that uses static IP address.







### 3) EZSetup (Customized)

Only differences between the default setup will be shown below. Select the “Customization” check box for advanced wireless LAN functions.



You can check for automatic or uncheck for manual wireless network naming. You must enter a name if unchecked.



### 3) EZSetup (Customized) (Cont.)



You can choose to use automatic or manual security key. If all your clients are using ASUS WPA capable wireless network adapters, you can select **WPA** for extra strength security. (This selection will only be available for ASUS WPA adapters.)

(WEP or WPA depends on security selection in the previous screen.)



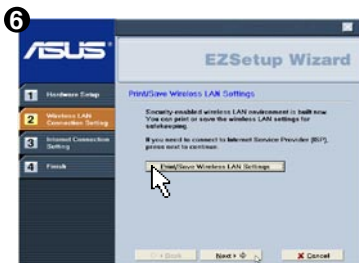
If you chose “Manually assign”, enter a WEP (Wired Equivalent Privacy) key following the guideline as shown.



### 3) EZSetup (Customized) (Cont.)



If you chose “Manually assign” and selected the WPA check box, enter a WPA (Wi-Fi Protected Access) key following the guideline as shown.



Security-enabled wireless LAN environment is built now. You can print your key and your other network settings for your reference.

Wireless LAN setup is complete. Click **Next** to make Internet connection settings.

\*For the following steps of Internet settings, please refer to P14~P15 Step 4~8.



**Note:** Use EZSetup Wizard with one wireless client at a time. If the wireless client computer cannot discover the wireless router while in EZSetup mode, decrease the distance between the client and the router.



## 5. Configuring the ASUS Wireless Router

The ASUS Wireless Router can be configured to meet various usage scenarios. Some of the factory default settings may suit your usage; however, others may need changing. Prior to using the ASUS Wireless Router, you must check the basic settings to guarantee it will work in your environment. Configuring the ASUS Wireless Router is done through a web browser. You need a Notebook PC or desktop PC connected to the ASUS Wireless Router (either directly or through a hub) and running a web browser as a configuration terminal. The connection can be wired or wireless. For the wireless connection, you need an IEEE 802.11g/b compatible device, e.g. ASUS WLAN Card, installed in your Notebook PC. You should also disable WEP and set the SSID to “default” for your wireless LAN device. If you want to configure the ASUS Wireless Router or want to access the Internet through the ASUS Wireless Router, TCP/IP settings must be correct. Normally, the TCP/IP setting should be on the IP subnet of the ASUS Wireless Router.

---

**Note:** Before rebooting your computer, the ASUS Wireless Router should be switched ON and in ready state.

---

### 1) Connecting to the ASUS Wireless Router

#### Wired Connection

One RJ-45 cable is supplied with the ASUS Wireless Router. Auto crossover function is designed into the ASUS Wireless Router so you can use either a straight-through or a crossover Ethernet cable. Plug one end of the cable into the WAN port on the rear of the ASUS Wireless Router and the other end into the Ethernet port of your ADSL or Cable modem.



## Wireless-Connection

Refer to your wireless adapter user's manual on associating with the ASUS Wireless Router. The default SSID of the ASUS Wireless Router is "default" (lower case), encryption is disabled and open system authentication is used.

## 2) Setting IP address for Wired or Wireless Connection

### Get IP Automatically

The ASUS Wireless Router incorporates a DHCP server so the easiest method is to set your PC to get its IP address automatically and reboot your computer. So the correct IP address, gateway, DNS (Domain Name System Server) can be obtained from the ASUS Wireless Router.



**Note:** Before rebooting your PC, the ASUS Wireless Router should be switched ON and in ready state.



## 2) Setting IP address for Wired or Wireless Connection (Cont.)

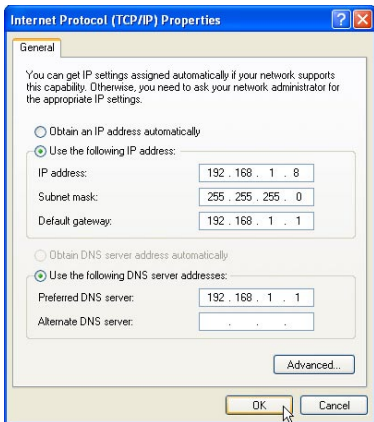
### Setting IP Manually

If you want to set your IP address manually, the following default settings of the ASUS Wireless Router should be known:

- IP address 192.168.1.1
- Subnet Mask 255.255.255.0.

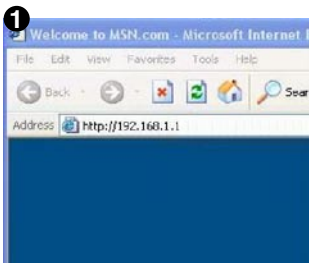
If you set your computer's IP manually, it needs to be on the same segment. For example:

- IP address 192.168.1.xxx (xxx can be any number between 2 and 254 that is not used by another device)
- Subnet Mask 255.255.255.0 (same as the ASUS Wireless Router)
- Gateway 192.168.1.1 (this is the ASUS Wireless Router)
- DNS 192.168.1.1 (ASUS Wireless Router IP address or your own).





### 3) Configuring the Wireless Router



Enter the following address in your web browser: <http://192.168.1.1>

#### Defaults

User name: **admin**

Password: **admin**



After logging in, you will see the ASUS Wireless Router home page.

The homepage displays quick links to configure the main features of the router.



## 6. Commonly Used Features

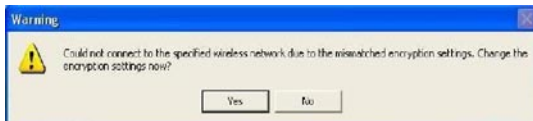
The following pages are setup examples for your reference, you could setup these features in web browser.

### 1) How to Setup Encryption

#### 1-1) WL-520g Encryption Setup

ASUS WL-520g provides a short cut to set up encryption for your wireless router via EZSetup features. Please refer to P.16-P.17 EZSetup (customized) procedures to set up WEP or WPA encryptions.

#### 1-2) WL-167g Encryption Setup



\*To enable the configuration of WL-520g, please search for WL-167g again. Please refer to WL-520g/WL-167g connection setup steps, a default program will run automatically for config settings.





## 1-2) WL-167g Encryption Setup (Cont.)

The image shows a 'Wireless Network Key (WEP)' configuration window. It has two main sections: 'Manual Assignment' and 'Automatic Generation'. In the 'Manual Assignment' section, there are four text boxes labeled 'Key 1', 'Key 2', 'Key 3', and 'Key 4'. In the 'Automatic Generation' section, there is a 'Passphrase' text box. At the bottom, there is a label 'Select one as your Default Key =>' and a dropdown menu currently showing 'Key 1'. A yellow key icon is visible on the right side of the window.

Wireless Network Key (WEP)

Key Format: Hexadecimal digits

Key Length: 64 bits (10 digits)

☒ Manual Assignment

Key 1 :

Key 2 :

Key 3 :

Key 4 :

☐ Automatic Generation

Passphrase:

Select one as your Default Key => Key 1

1. Click "Yes" and jump to config page, then set the config identical with the router. (Use WEP-64bit Key: 2627F68597 as shown)



2. Click "Apply" when finish.



## 1-2) WL-167g Encryption Setup (Cont.)



3. Click "Status" button to verify if the device is connected.



4. Remember to save the settings, click "Save as profile" and click "Save", then click "OK" to finish the setup.

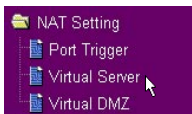


## 2) Setting up a Server in Your LAN



Virtual Server is a kind of technology which enables a computer to receive specialized packets from network. It is to assign a certain host to act as a link between inner LAN and outside Web, FTP server. Virtual DMZ provides an all-port-match function, which grants specified computers unlimited authority to get access to network resources. The difference between Virtual Server and Virtual DMS lies on the ports they enable respectively: Virtual Server just open several ports while Virtual DMZ open all ports to the network.

1



2

### NAT Setting - Virtual Server

To make services, like WWW, FTP, provided by a server in your local network accessible for outside users, you should specify a local IP address to the server. Then, add the IP address and network protocol type, port number, and name of the service in the following list. Based on the list, the gateway will forward service request from outside users to the corresponding local server.

Enable Virtual Server?

1 ☒ Yes ☐ No

### Virtual Server List

4

Well-Known Applications:

2

Port Range	Local IP	Local Port	Protocol	Description
3 20:21	192.168.1.100	21	ICP	FTP Server (20:21)

3



4

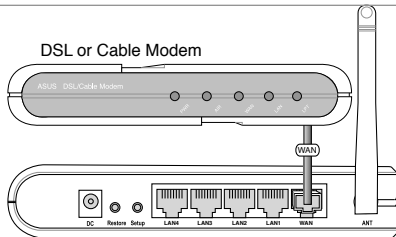
### Save & Restart

Save&Restart will save all setting you have changed to WL520g and restart it. Please click **SaveRestart** button to continue.



### 3) Setting up Switching Hub & Pure AP(No IP Share NAT)

1



ASUS Wireless Router

2



3

#### IP Config - DHCP Server

WL520g supports up to 253 IP addresses for your local network. The IP address of a local machine can be assigned manually by the network administrator or obtained automatically from WL520g if the DHCP server is enabled.

Enable the DHCP Server?	<input checked="" type="radio"/> Yes <input type="radio"/> No
Domain Name:	
IP Pool Starting Address:	192.168.1.2
IP Pool Ending Address:	192.168.1.254
Lease Time:	3600

4

<input type="button" value="Restore"/>	<input type="button" value="Finish"/>	<input type="button" value="Apply"/>
--	---------------------------------------	--------------------------------------

5

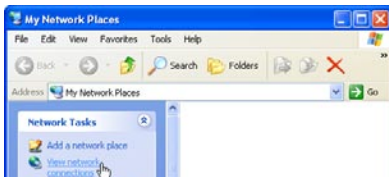
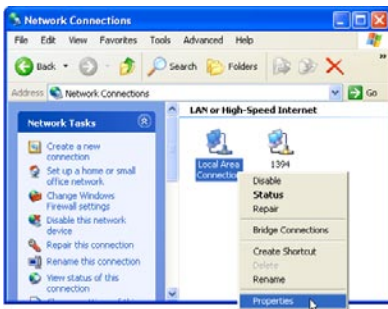
#### Save & Restart

Save&Restart will save all setting you have changed to WL520g and restart it. Please click **Save&Restart** button to continue.

<input type="button" value="Save&amp;Restart"/>
---



## 4) Setting up Net Meeting, MSN, Online Gaming, and Remote Control Programs (Cont.)

**1****2****3**

(More on next page)



## 4) Setting up Net Meeting, MSN, Online Gaming, and Remote Control Programs (Cont.)

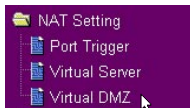
4

- ☒ Client for Microsoft Networks
- ☒ File and Printer Sharing for Microsoft Networks
- ☒ QoS Packet Scheduler
- ☒ Internet Protocol (TCP/IP)

5

- ☐ Obtain an IP address automatically
- ☒ Use the following IP address:
- IP address: 192 . 168 . 1 . 100
- Subnet mask: 255 . 255 . 255 . 0
- Default gateway: 192 . 168 . 1 . 1
- ☐ Obtain DNS server address automatically
- ☒ Use the following DNS server addresses:
- Preferred DNS server: 192 . 168 . 1 . 1
- Alternate DNS server: . . .

6



7

### NAT Setting - Virtual DMZ

Virtual DMZ allows you to expose one computer to Internet, so that all the inbound packets will be redirected to the computer you set. It is useful while you run some applications that use uncertain incoming ports. Please use it carefully.

IP Address of Exposed Station: 192.168.1.100

8

### Save & Restart

Save&Restart will save all setting you have changed to WL520g and restart it. Please click **Save&Restart** button to continue.

Save&Restart



## 5) Setting up DDNS

1



2

### DDNS Setting

Dynamic-DNS (DDNS) allows you to export your server to Internet with an unique name, even though you have no static IP address. Currently, several DDNS clients are embedded in WL520g. You can click Free Trial below to start with a free trial account.

Enable the DDNS Client?

1

Yes No

Server:

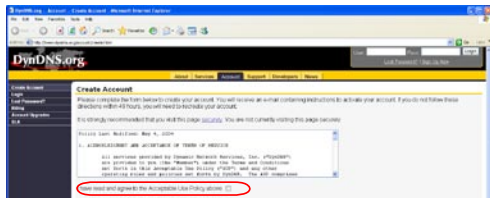
2

WWW.DYNDNS.ORG

Free Trial

3

3



4

### Create Account

Please complete the form below to create your account. You will receive an e-mail containing instructions to activate your account. If you do not follow these directions within 48 hours, you will need to recreate your account.

Policy Last Modified: May 4, 2004

#### 1. ACKNOWLEDGMENT AND ACCEPTANCE OF TERMS OF SERVICE

All services provided by Dynamic Network Services, Inc. ("DynDNS") are provided to you (the "Member") under the Terms and Conditions set forth in this Acceptable Use Policy ("AUP") and any other operating rules and policies set forth by DynDNS. The AUP comprises

I have read and agree to the Acceptable Use Policy above: ☒ 4

(More on next page)



## 5) Setting up DDNS (Cont.)

**5****Username**

Your username will be used to login to your account and make changes.

Username:

**6** WL520g**E-mail Address**

The e-mail address you enter must be valid. Instructions to activate your account will be sent to the e-mail address provided. You must keep this address current and accounts with invalid e-mail addresses will be removed with no warning. We do not sell our list to anyone. Read more about our privacy policy.

E-mail Address:

**6** WL520g@us.com

Confirm E-mail Address:

WL520g@us.com

**Password**

The password you enter will be used to access your account. It must be more than 5 characters and cannot be your username.

Password:

**7** \*\*\*\*\*

Confirm Password:

\*\*\*\*\*

**8**

Create Account Reset Pass

**6****Account Created**

Your account, WL520g, has been created. Directions for activating your account have been sent to WL520g@us.com. To complete registration, please follow the directions that you will receive. You must complete these steps within 48 hours to complete your registration.

You should receive the confirmation e-mail within a few minutes. Please make certain that your spam filtering allows messages from support@dyndns.org to be delivered. If you have not received this e-mail within an hour or so, request a password reset.

Following the instructions in the password reset e-mail will also confirm your new account. If you don't receive the password reset e-mail either, you should check with your e-mail provider to determine why you are not receiving these messages.

**7**

Your DynDNS.org user account 'WL520g' has been created. You must visit the confirmation address below within 48 hours of the time this e-mail was sent to complete the account creation process.

Our basic service offerings are free, but they are supported by our premium services. See <http://www.dyndns.org/services/> for a full listing of all of our available services.

To confirm your account, please go to the address below:

**9** [https://www.dyndns.org/account/confirm/\\_U01yO2Re3qweybX-SFXIA](https://www.dyndns.org/account/confirm/_U01yO2Re3qweybX-SFXIA)**8****Account Confirmed**

The account "WL520g" has been confirmed. You can now **10** login and start using your account.

We have a system announcements mailing list you may wish to subscribe to - this list is used for notifications of new services, changes to services, and important system maintenance status notifications. To subscribe, simply send an e-mail to [announce-subscribe@us.dyndns.org](mailto:announce-subscribe@us.dyndns.org).

**9****Login**

You must have cookies enabled to access your account. (Why Cookies?)

Username:

WL520g **11**

Password:

\*\*\*\*\*

**12** Login

(More on next page)





## 5) Setting up DDNS (Cont.)

10

### Logged In

You are currently logged in as: WL520g (Logout)

11

12

13

### New Dynamic DNS Host

14

### Hostname Created

The hostname you have requested has been created. The information

Hostname: **wl520g.dyndns.org**  
 IP Address: 61.230.200.133  
 Wildcard: N  
 Mail Exchanger: None  
 Backup MX: N

(More on next page)



## 5) Setting up DDNS (Cont.)

15

### DDNS Setting

Dynamic-DNS (DDNS) allows you to export your server to Internet with an unique name, even though you have no static IP address. Currently, several DDNS clients are embedded in WL520g. You can click Free Trial below to start with a free trial account.

Enable the DDNS Client?	<input checked="" type="radio"/> Yes <input type="radio"/> No
Server:	WWW.DYNDNS.ORG <a href="#">Free trial</a>
User Name or E-mail Address:	WL520g
Password or DDNS Key:	****
Host Name:	wl520g.dyndns.org
Enable wildcard?	<input type="radio"/> Yes <input checked="" type="radio"/> No
Update Manually:	<input type="button" value="Update"/>

16

<input type="button" value="Restore"/>	<input type="button" value="Finish"/>	<input type="button" value="Apply"/>
--	---------------------------------------	--------------------------------------

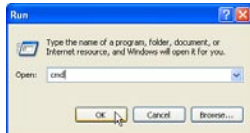
### Save & Restart

Save&Restart will save all setting you have changed to WL520g and restart it. Please click **Save&Restart** button to continue.

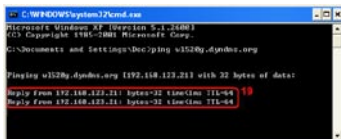
17



18



19





## 6) Setting up WDS

1



2

### Wireless - Bridge

Wireless bridge (also known as Wireless Distribution System or WDS) function allows you to connect to one or many APs through wireless.

AP Mode:



Channel:



3

AP Mode:



Channel:



Connect to APs in Remote Bridge List?

No

Allow anonymous?

No

### Remote Bridge List

MAC Address

Add

Del

4

Channel:



Connect to APs in Remote Bridge List?

☒ Yes ☐ No

Allow anonymous?

☐ Yes ☒ No

5

### Remote Bridge List

MAC Address

081122334455

2

Add

Del

6

### Save & Restart

Save&Restart will save all setting you have changed to WL520g and restart it. Please click Save&Restart button to continue.

Save&Restart



## 7. Trouble Shooting

### 1. Cannot access to web browser for router configuration



1. Open a web browser and open "Internet Options" dialog box.



2. Click on "Delete Cookies" and "Delete Files".



## 7. Trouble shooting (Cont.)

### 2. Cannot Establish Connection via Wireless

#### **Out of Range:**

Put the router closer to the client.

Try to change the channel setting.

#### **Authentication:**

Can use a wire-connected computer to connect to router.

Check the wireless security setting,

Or can do a hard reset on the router.

#### **Couldn't find the router:**

Do the hard restore on the router and test again.

Check the setting in the wireless adapter.

Such as SSID and encryption setting.

### 3. Cannot get access to the Internet via wireless LAN adapter

- Move the router closer to the client.
- Check whether the wireless adapter is connected to the correct AP.
- Check whether the wireless channel in use conforms to the channels available in your country/ area.
- Check encryption setting.
- Check whether the ADSL cable is plugged to the correct port.
- Retry by another Ethernet cable.



## 7. Trouble shooting (Cont.)

### 4. Internet is not accessible

Check the lights on ADSL modem and Wireless Router

Check the "WAN" led on the router is on or not. If the led isn't on, please change the cable to try again.

#### 4.1. When ADSL Modem "Link" light is on (not blinking), this means Internet Access is Possible.

Restart your computer.

Reconfigure the settings for ASUS Router and please refer to the Quick Setup Guide of the WL-520g.

Check whether the WAN LED on the router is on or not.

Check wireless encryption settings

Check whether the computer can get the IP address or not. (via both wired network and wireless network)

Check whether your Web browser is configured to use the local LAN, and is not configured to use a proxy server.

#### 4.2. If the ADSL "LINK" light blinks continuously or stays off, Internet access is not possible - the Router is unable to establish a connection with the ADSL network.

Check that your cables are connected properly.

Disconnect the power cable from the modem, wait a few minutes, then reconnect the cable.

If the ADSL light continues to blink or stays off, contact your ADSL service provider.



## 7. Trouble shooting (Cont.)

### 5. Network name or encryption keys are unknown

Can try to setup the wired connection for setup the wireless encryption again.

Can do the hard reset on the router.

### 6. How to reset to defaults

The following are factory default values. These values will be present when you first receive your ASUS Wireless Router, if you push the restore button on the back of the ASUS Wireless Router over 5 seconds, or if you click the “Restore” button on the “Factory Default” page under “Advanced Setup”.

User Name: admin

Password: admin

Enable DHCP: Yes (if plug in Wan cable)

IP address: 192.168.1.1

Subnet Mask: 255.255.255.0

DNS Server 1: 192.168.1.1

DNS Server 2: (Blank)

SSID: default

Domain Name: (Blank)



## 8. Appendix



### **FCC Warning Statement**

This device complies with Part 15 of the FCC Rules. Operation is subject to the following two conditions:



- (1) this device may not cause harmful interference, and
- (2) this device must accept any interference received, including interference that may cause undesired operation.

This equipment has been tested and found to comply with the limits for a class B digital device, pursuant to part 15 of the FCC Rules. These limits are designed to provide reasonable protection against harmful interference in a residential installation.

This equipment generates, uses and can radiate radio frequency energy and, if not installed and used in accordance with the instructions, may cause harmful interference to radio communications. However, there is no guarantee that interference will not occur in a particular installation. If this equipment does cause harmful interference to radio or television reception, which can be determined by turning the equipment off and on, the user is encouraged to try to correct the interference by one or more of the following measures:

- Reorient or relocate the receiving antenna.
- Increase the separation between the equipment and receiver.
- Connect the equipment into an outlet on a circuit different from that to which the receiver is connected.
- Consult the dealer or an experienced radio/TV technician for help.





## 8. Appendix (Cont.)



### CAUTION:

Any changes or modifications not expressly approved by the party responsible for compliance could void the user's authority to operate the equipment.

### **Prohibition of Co-location**

This device and its antenna(s) must not be co-located or operating in conjunction with any other antenna or transmitter

### **Safety Information**

To maintain compliance with FCC's RF exposure guidelines, this equipment should be installed and operated with minimum distance 20cm between the radiator and your body. Use on the supplied antenna.

### **Declaration of Conformity for R&TTE directive 1999/5/EC**

Essential requirements – Article 3

Protection requirements for health and safety – Article 3.1a

Testing for electric safety according to EN 60950-1 has been conducted. These are considered relevant and sufficient.

Protection requirements for electromagnetic compatibility – Article 3.1b



## 8. Appendix (Cont.)

Testing for electromagnetic compatibility according to EN 301 489-1 and EN 301 489-17 has been conducted. These are considered relevant and sufficient.

Effective use of the radio spectrum – Article 3.2

Testing for radio test suites according to EN 300 328- 2 has been conducted. These are considered relevant and sufficient.



### **CE Mark Warning**

This is a Class B product, in a domestic environment, this product may cause radio interference, in which case the user may be required to take adequate measures.



## 8. Appendix (Cont.)

### Technical Construction file in accordance with R&TTE Annex III

Under the provisions of Annex III point 2 of the **R&TTE directive 1999/5/EC** of the European Parliament and of the council of 9 March on Radio equipment and Telecommunications Terminal Equipment (R&TTE directive) and the mutual recognition of their conformity,

We, the undersigned,

<b>Company</b>	ASUSTeK Computer Inc.
<b>Address, City</b>	4FL, No.150, Li-Te Rd., Peitou, Taipei,
<b>Country</b>	Taiwan 112
<b>Phone number</b>	886-2-28943447
<b>Fax number</b>	886-2-28950113
<b>E-mail</b>	lawrence_yu@asus.com.tw

Have established a Technical Construction File as specified below to be inspected to any Member States and to be kept available to the relevant national authorities of any Member State for inspection purpose:

Item number	Technical Document description
01	Technical File in accordance with R&TTE directive Annex II point 4
02	Declaration of conformity to specific test suites described in R&TTE directive Annex III

For the following product:

<b>Product Description / Supplementary Info</b>	ASUS Wireless Router
<b>Manufacturer</b>	ASUSTeK COMPUTER INC.
<b>Brand</b>	ASUS
<b>Type</b>	WL-520G

The Technical Construction File as specified above will be kept for a period ending at least 10 years after the last product has been manufactured at the disposal of the relevant national authorities of any Member State for inspection purpose,



<b>Draw up in</b>	Taiwan
<b>Date</b>	2005/03/15
ASUSTek Computer Inc. 4/F, 150, Li-Te Rd., Peitou, Taipei, Taiwan 112	
<b>Signature &amp; company stamp</b>	LawrenceYu / Manager



## 8. Appendix (Cont.)

### *Federal Communications Commission* **Declaration of Conformity (DoC)**

*for the following equipment:*

Product name : 125 High Speed Wireless Router  
Model name : WL-520G  
Trade name : ASUS

Is herewith confirmed and found to comply with the requirements of CFR 47 part15 Subpart B - Unintentional Radiators regulation. The results of electromagnetic mission evaluation are shown in the report number : A5415050105

This device complies with Part 15 of the FCC Rules. Operation is subject to the following two conditions:

- (1) This device may not cause harmful interference, and
- (2) This device must accept any interference received, including interference that may cause undesired operation

<b>Manufacturer</b>	<b>USA local representative</b>
<b>Company name:</b> ASUSTeK Computer Inc.	To be determined
<b>Computer address:</b> 4/F, 150, Li-Te Rd., Peitou, Taipei, Taiwan	
<b>ZIP / Postal code</b> 112	
<b>Contact person:</b> Lawrence Yu	
<b>Title:</b> Manager	
<b>Internet e-mail address:</b> lawrence_yu@asus.com.tw	
<b>Tel / Fax:</b> 886-2-28943447 / 886-2-28950113	